

ODOT. DISTRICT 2 SURVEY OFFICE

Sht. ___ of ___

County Seneca S.R. 53

Date 30 July 80

Township Clinton

Weather Warm

Section 7

Temp. 77°

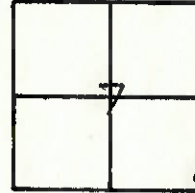
T N, R E

Personnel L. Stone

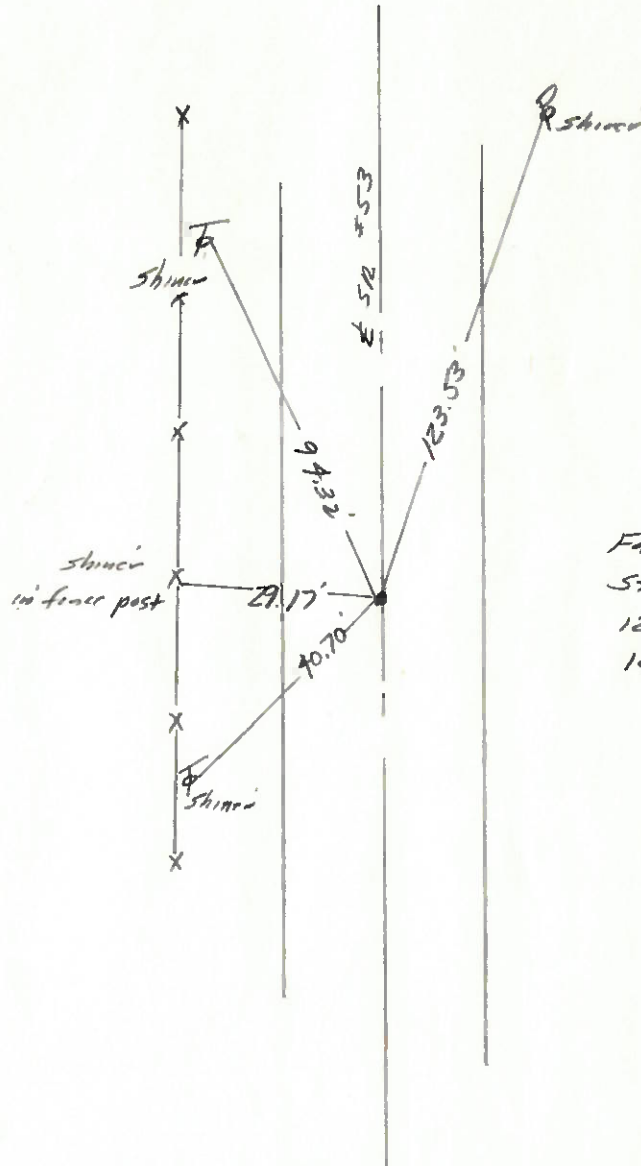
R. Michalak

D. Curtis

P. Newser



Ref No. 57



Fd. Nail To Surface
Sta. 592+50.00 = P.O.T.
120' to W. edge put.
123' to E. edge put.

SET P.K.
8-26-80
SMITH

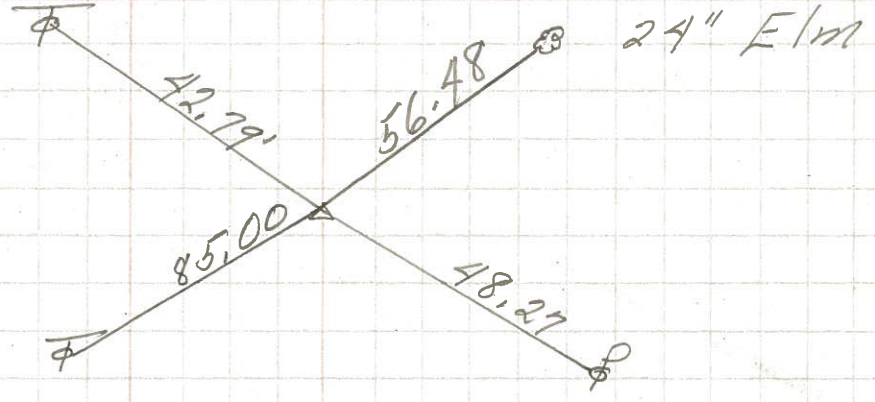
PERSONNEL	TITLE	PERSONNEL	TITLE	COUNTY	DATE
Schneider				Seneca	9-16-69
Masser				S. R. 53	WEATHER Cloudy
Barbour				SEC. Tiffin to San Co. Line	TEMP. 70°
Potts					

DESCRIPTION Ties for Control Points JOB NO. _____

58

~~48+06~~
616+31.69 S.L.M.

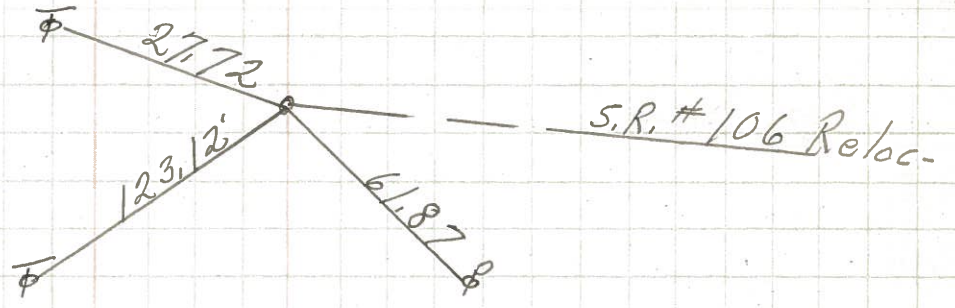
8372



57

50+00 = 343+23.78
R.R. spk

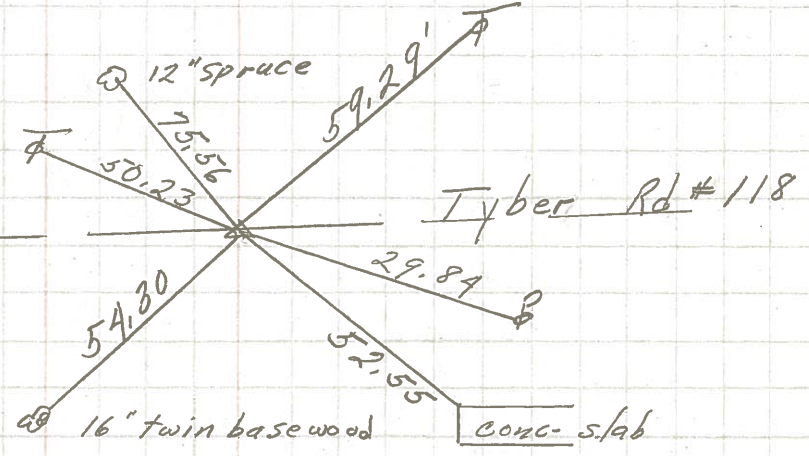
8372



56

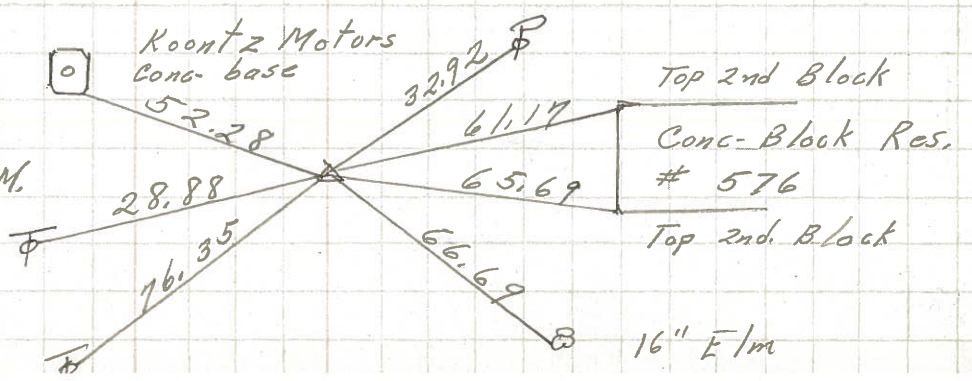
P.I.
589+81.16 S.L.M.
small spk.

8371



P.I.
0+00 568+39.44 S.L.M.
small spk.

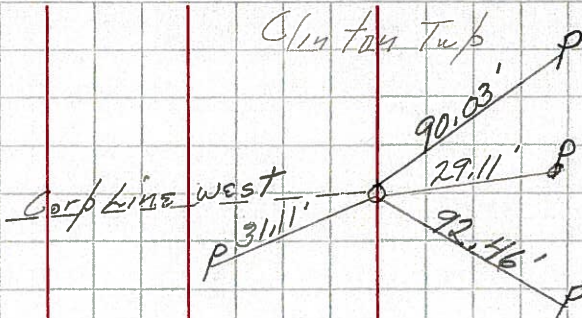
8370



PERSONNEL	TITLE	PERSONNEL	TITLE	COUNTY	DATE
Knabill				Seneca	
Kawaleski				S. R. 53	
Geyman					
				SEC.	TEMP.
DESCRIPTION Tiffin North to Sandusky line					JOB NO.
	LEFT	CENTER LINE	RIGHT		

Sta 585+25.88
 $\Delta = 0^{\circ}00'00''$
 Nail

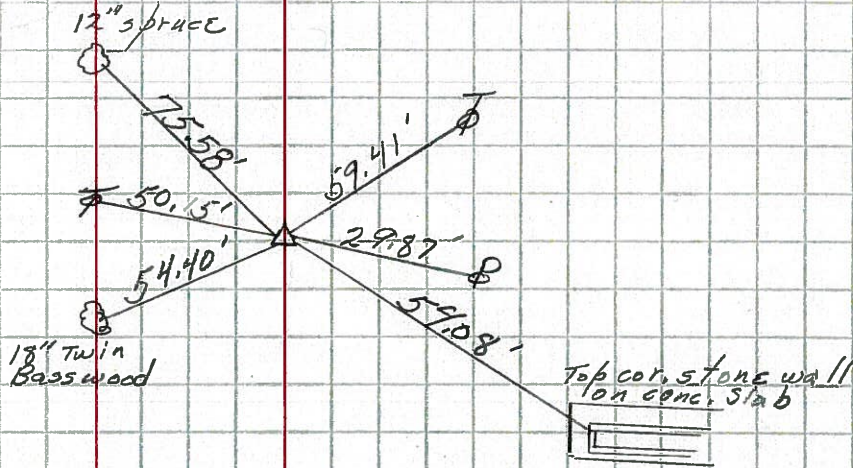
55



NOTE
 Nail pointed out
 by city engineer

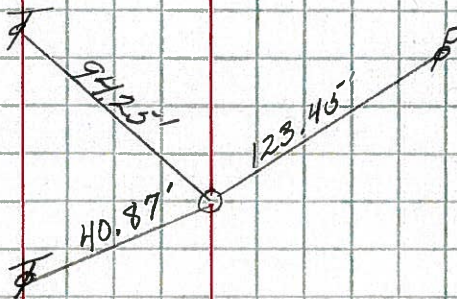
Sta 589+81.16
 $\Delta = 27^{\circ}42'30''$ LT
 Iron pin

56



Sta 592+50
 $\Delta = 0^{\circ}00'00''$
 Nail

57



Sta 616+31.69

58

Cor. Stone - R.R. spike

