

PERSONNEL	TITLE	PERSONNEL	TITLE	COUNTY	DATE	WEATHER
E. Krabill				SEYECG	1-6-64	
Kawalecki				S. R. 5-3		
Gayman						

DESCRIPTION	LEFT	CENTER LINE	RIGHT	SEC.	TEMP.	JOB NO.
Tiffin North to Sandusky Line						

Sta 536+448

50
51 A

Intersection of SR. 53 and Washington St
Man box with stone

Sta 546+89.70

51
51 B

Intersection of Second Ave and SR. 53
Man box with stone

Sta 568+39.44

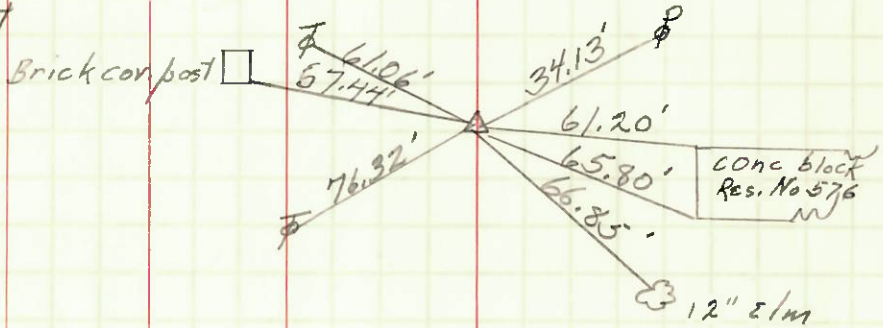
$\Delta = 0^{\circ} - 03' - 00''$ LT

P.K. Nail

Sta. 0+00
old Plan Sta.

52

Brick corner post



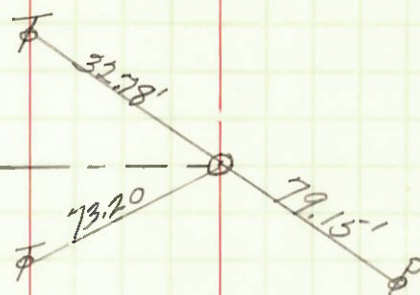
53

Sta 574+63.12

$\Delta = 0^{\circ} - 00' - 00''$

P.K. nail

Remus St



54

Sta 581+65.50

$\Delta = 0^{\circ} - 00' - 00''$

P.K. nail

