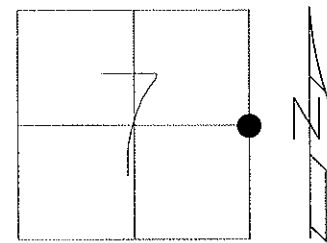


O.D.O.T. DISTRICT 2 SURVEY OFFICE (USE ONLY)

PERSONNEL	REFERENCE NO. <u>58</u>	SHEET <u>4</u> OF <u>26</u>
NOTES <u>MOSE</u>	DATE <u>6/14/11</u>	ROUTE <u>SR 53</u>
H.C. <u>LUMBREZER</u>	WEATHER <u>CLOUDY</u>	COUNTY <u>SENECA</u>
R.C. <u>HARBAUGH</u>	TEMP. <u>70°</u>	TOWNSHIP <u>CLINTON</u>
		SECTION <u>7</u>
		T <u>2</u> N R <u>15</u> E

TYPE MONUMENT P.K.  
~~ON SURFACE~~ - BELOW 4"  
 LEFT - Q PAV'T - RIGHT ON           
12.0' TO RT EDGE PAVEMENT  
 S.L.M. 616+37.36

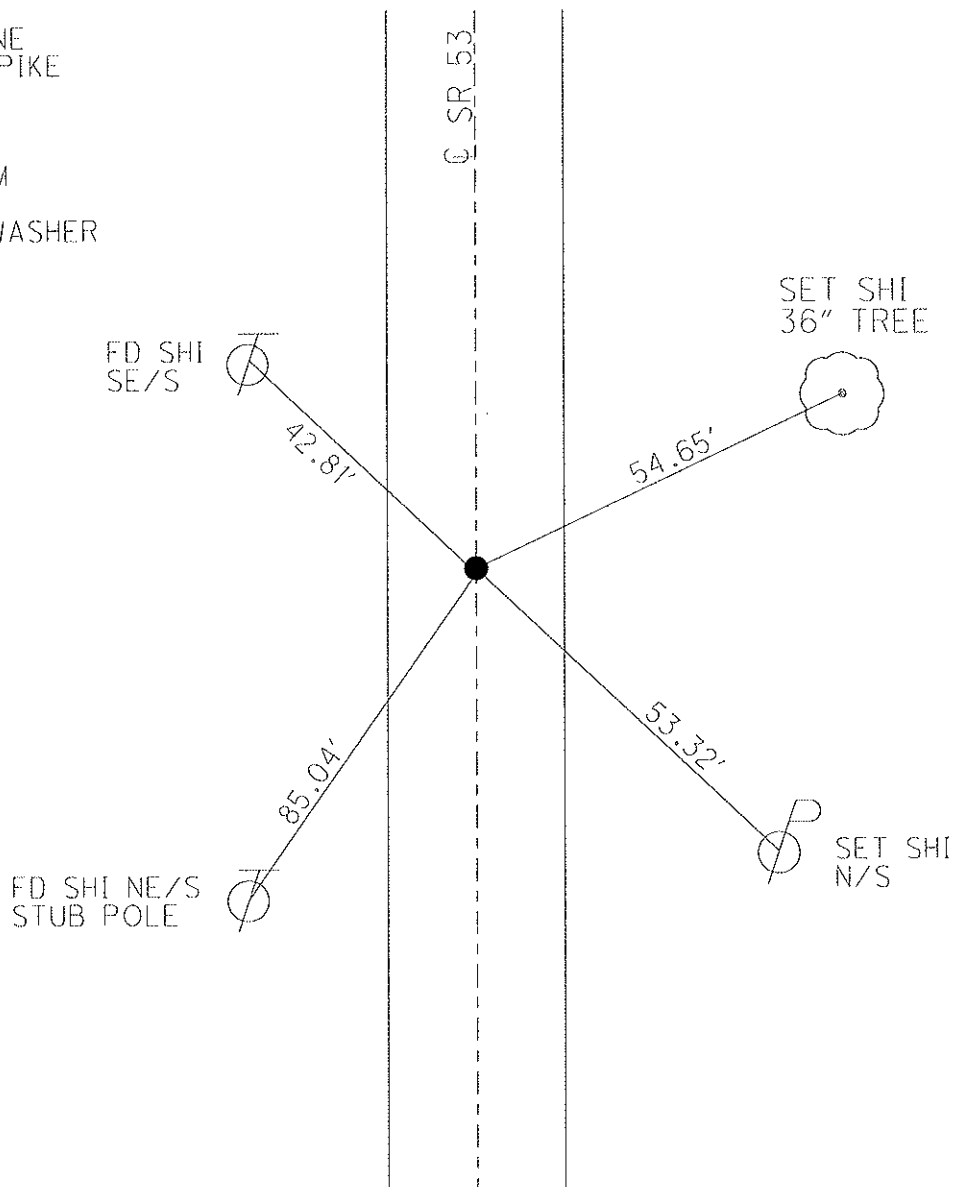


Grid: Northing: 539660.3360 Easting: 1784279.9628

CORNER STONE  
 BELOW R.R. SPIKE

FD P.K.  
 GPS, SV102  
 5/26/10, KPM

RESET MAG/WASHER  
 9/28/11, RJL



RES #1525

O.D.O.T. DISTRICT 2 SURVEY OFFICE

PERSONNEL

REFERENCE NO. 57-A

SHEET 4 OF 21

NOTES Cronin

H.C. Barbour

R.C. Geyman

DATE 6/30/88

WEATHER sunny

TEMP. 60°

ROUTE #53

COUNTY Seneca

TOWNSHIP Clinton

SECTION \_\_\_\_\_

T 2 N R 15 E

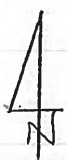
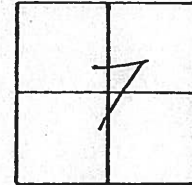
TYPE MONUMENT P.K. & washer

ON SURFACE - BELOW \_\_\_\_\_

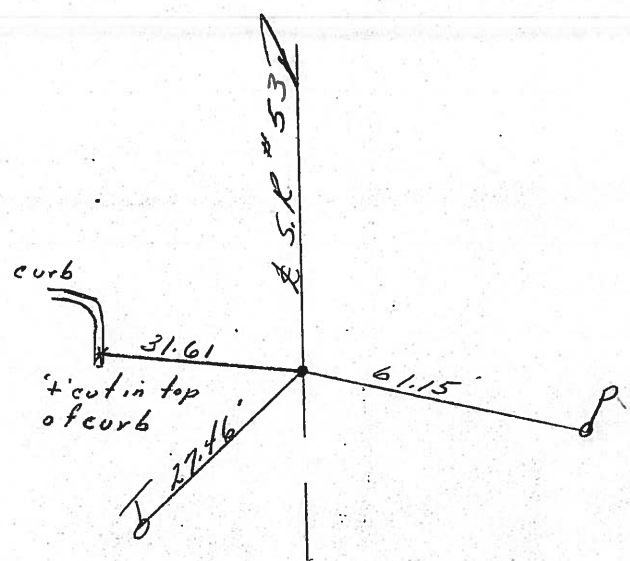
LEFT - ☉ PAV'T. - RIGHT \_\_\_\_\_

TO \_\_\_\_\_ EDGE PAVEMENT

S.L.M. \_\_\_\_\_



P.K. atop small spike  
below P.K. & washer



O.D.O.T. DISTRICT 2 SURVEY OFFICE

PERSONNEL

REFERENCE NO. 58

SHEET 5 OF 21

NOTES Cronin

H.C. Barbour

R.C. Geyman

DATE 6/30/85

WEATHER sunny

TEMP. 60°

ROUTE #53

COUNTY Seneca

TOWNSHIP Clinton

SECTION 7

T2 N R 15 E

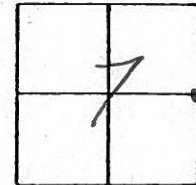
TYPE MONUMENT R.R. spike

ON SURFACE - BELOW 4"

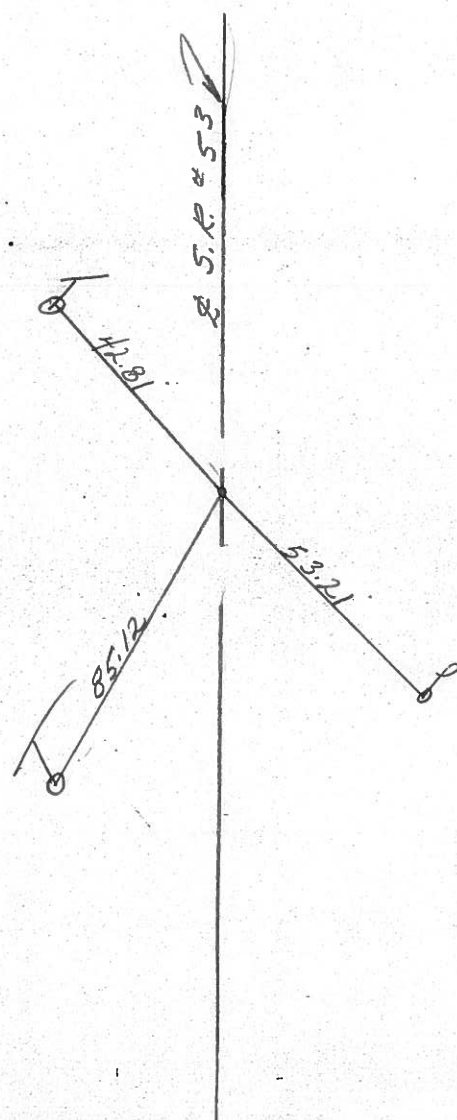
LEFT - ☉ PAV'T. - RIGHT

TO EDGE PAVEMENT

S.L.M. Sta. 616+31.69



Corner Stone below  
R.R. spike



County Seneca S.R. 53

Date 30 Aug. 80

Township Clinton

Weather Warm

Section \_\_\_\_\_

Temp. 78°

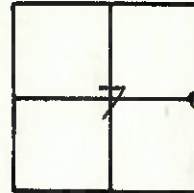
T    N, R    E

Personnel I. Stone

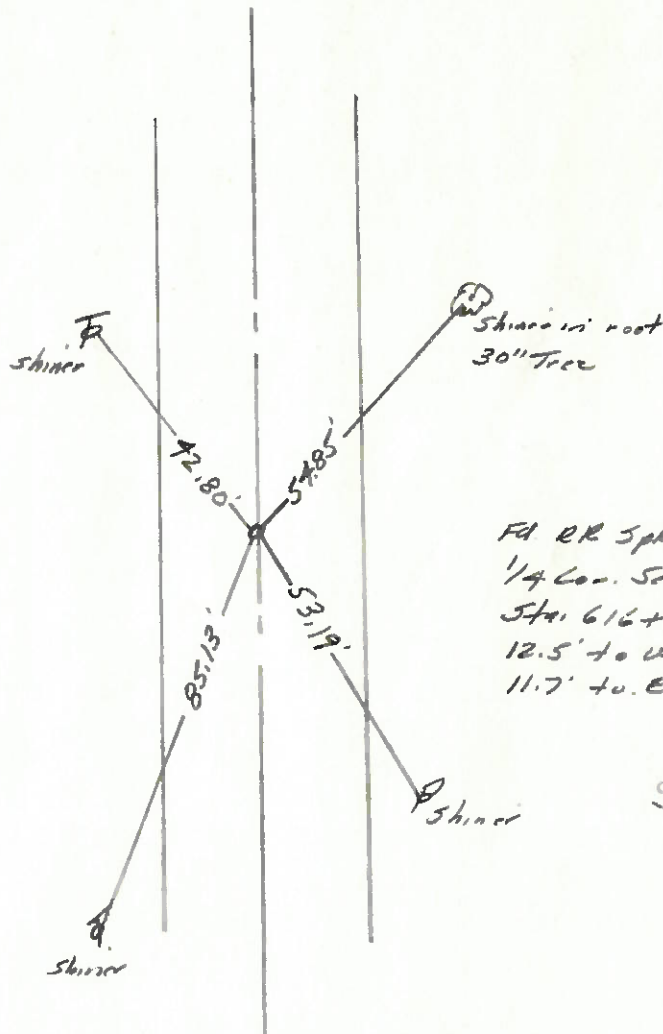
E. Michalak

D. Cordis

P. Newser



R.S. No. 58



Fd RR Spk. To Surface  
 1/4 Cor. Sec. 7/8  
 Sta. 616+31.69  
 12.5' to W. edge post.  
 11.7' to E. edge post.

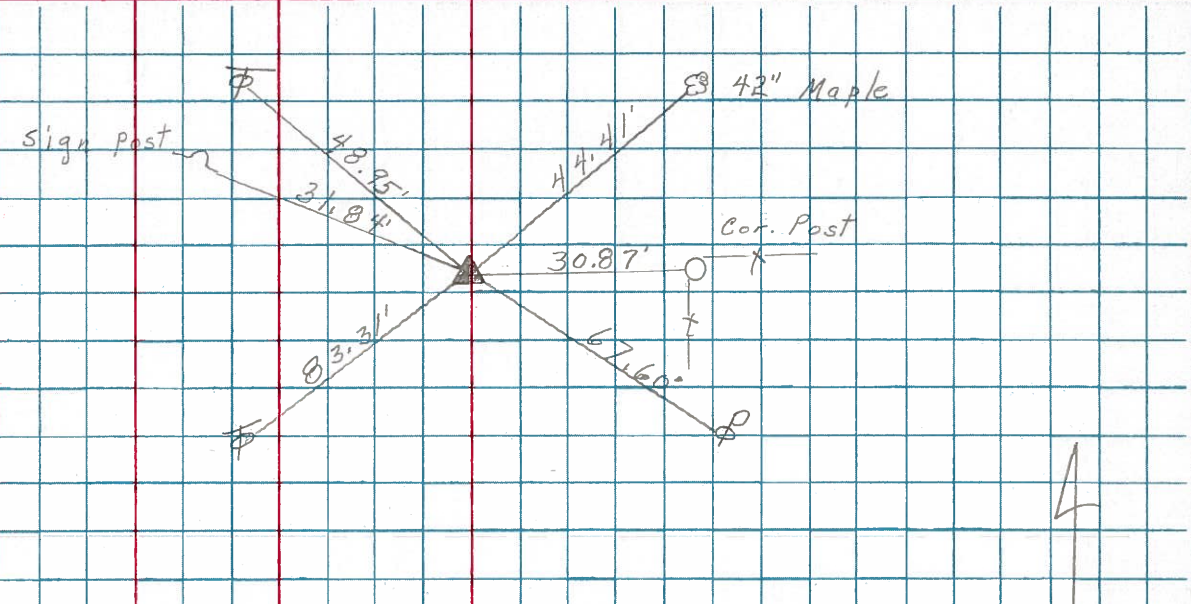
SET P.K.  
 8-26-80  
 SMITH

PERSONNEL	TITLE	PERSONNEL	TITLE	COUNTY	Seneca	DATE	3-20-79
Schneider				S. R.	53	WEATHER	Fair
Mosser				SEC.	156	TEMP.	55°
Barbour							

DESCRIPTION Tiffin to Sandusky Co. Line JOB NO. \_\_\_\_\_

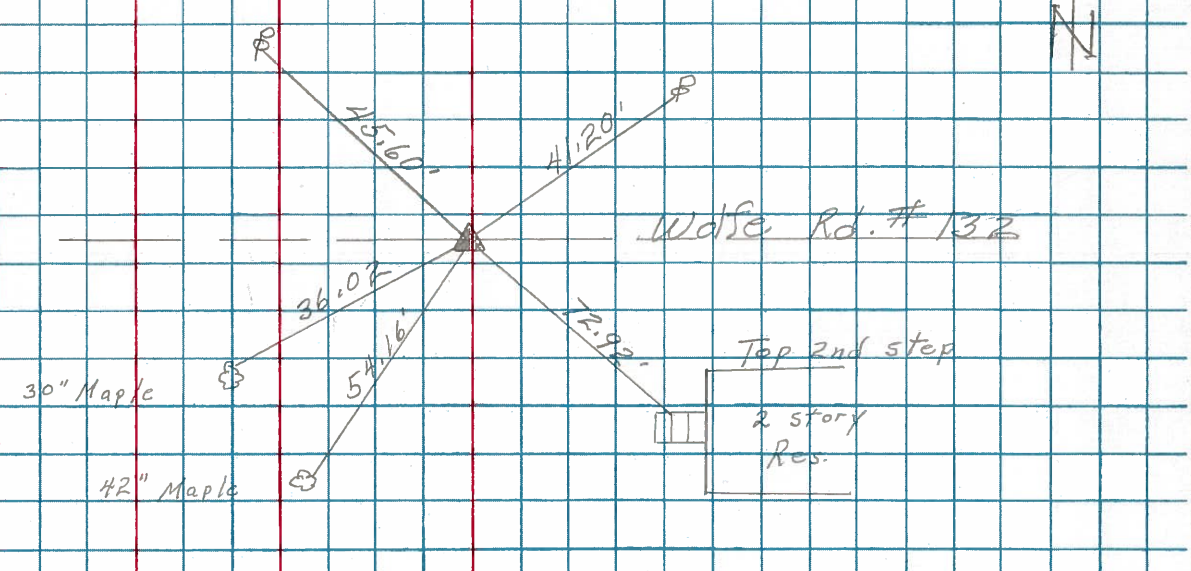
60

P.I.  
669+33.75  
small spk.



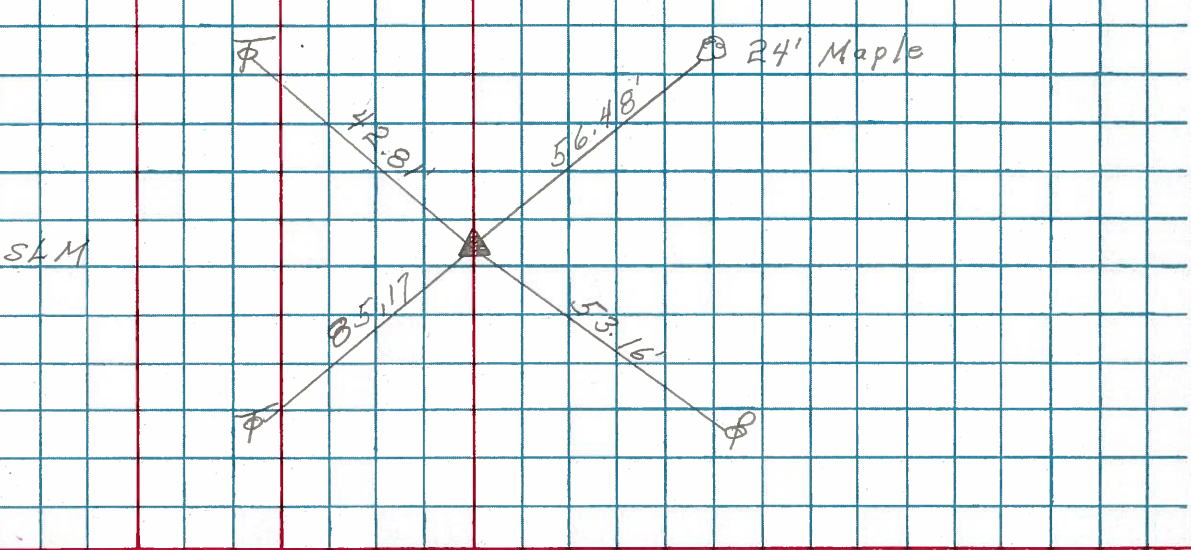
59

P.I.  
642+79.25  
small spk.



58

P.I.  
616+31.69 SAM  
small spk.



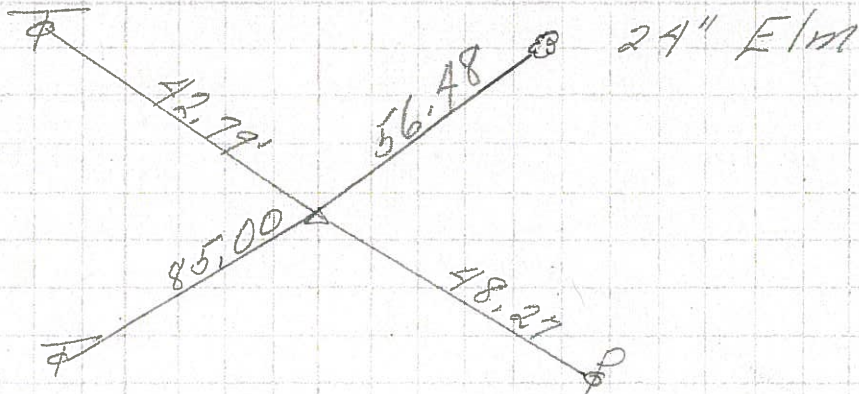
PERSONNEL	TITLE	PERSONNEL	TITLE	COUNTY	DATE
Schneider				Seneca	9-16-69
Mosser				S. R. 53	WEATHER Cloudy
Barbour				SEC. Tiffin to Seneca Line	TEMP. 70°
Potts					

DESCRIPTION Ties for Control Points JOB NO. \_\_\_\_\_

58

48+06  
616+31.69 S.L.M.

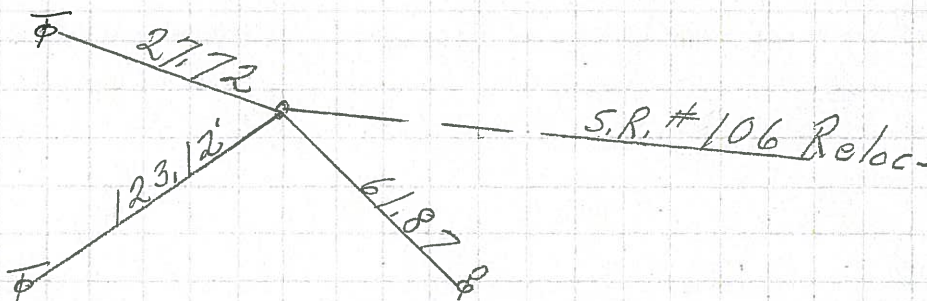
8372



57

50+00 = 343+23.78  
R.R. spk

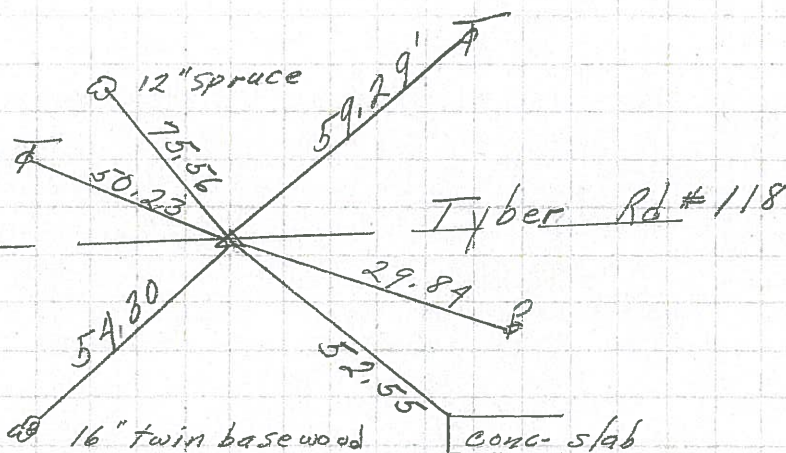
8372



56

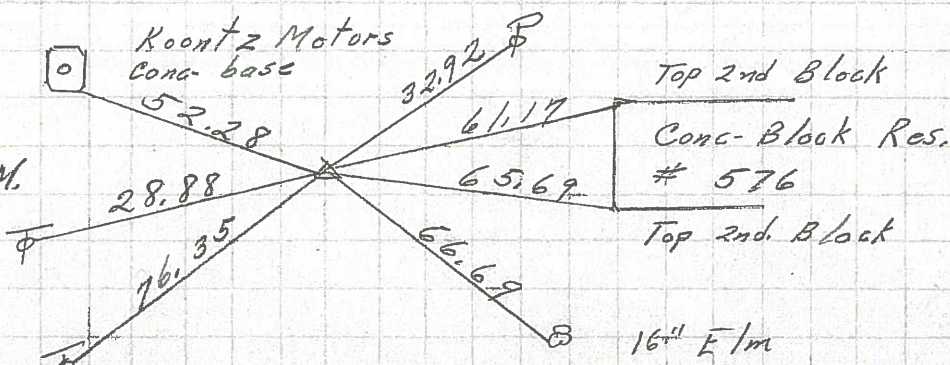
P.I.  
589+81.16 S.L.M.  
small spk.

8371



P.I.  
0+00 568+39.44 S.L.M.  
small spk.

8370



PERSONNEL TITLE PERSONNEL TITLE

COUNTY Seneca

DATE

Knabill  
Kawaleski  
Geyman

S. R. 53

WEATHER

SEC.

TEMP.

DESCRIPTION Tiffin North to Sandusky Line

JOB NO.

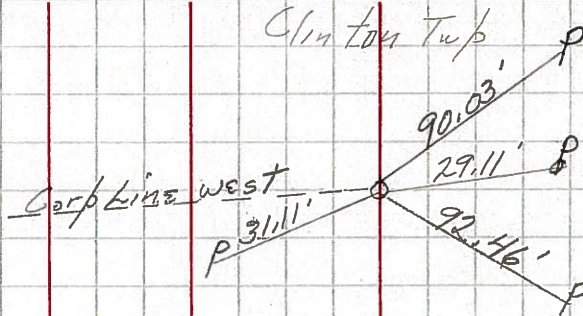
LEFT

CENTER LINE

RIGHT

Sta 585+25.88  
A=0°-00'-00"  
Nail

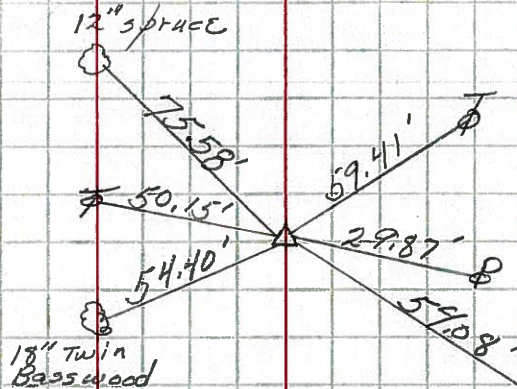
55



Note  
Nail pointed out  
by city engineer

Sta 589+81.16  
A=27°-42'-30" LT  
Iron pin

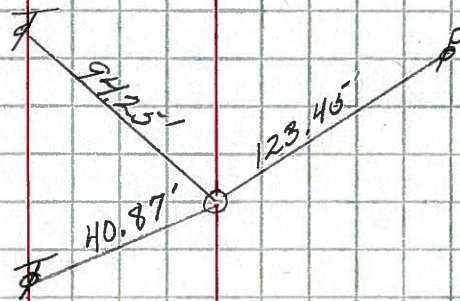
56



Top cor. stone wall  
on conc. slab

Sta 592+50  
A=0°-00'-00"  
Nail

57



Sta 616+31.69

58

Cor. Stone - R.R. spike

