

O.D.O.T. DISTRICT 2 SURVEY OFFICE (USE ONLY)

PERSONNEL

REFERENCE NO. 76

SHEET 25 OF 26

NOTES MOSE

DATE 6/14/11

ROUTE SR 53

H.C. LUMBREZER

WEATHER CLOUDY

COUNTY SENECA

R.C. HARBAUGH

TEMP. 70°

TOWNSHIP PLEASANT

SECTION 6

T 3 N R 15 E

TYPE MONUMENT MON.BOX

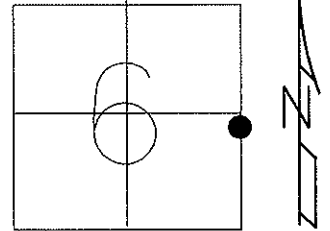
ON SURFACE - ~~BELOW~~ ON

LEFT - CL PAV'T - RIGHT ON

20.1' TO RT EDGE PAVEMENT

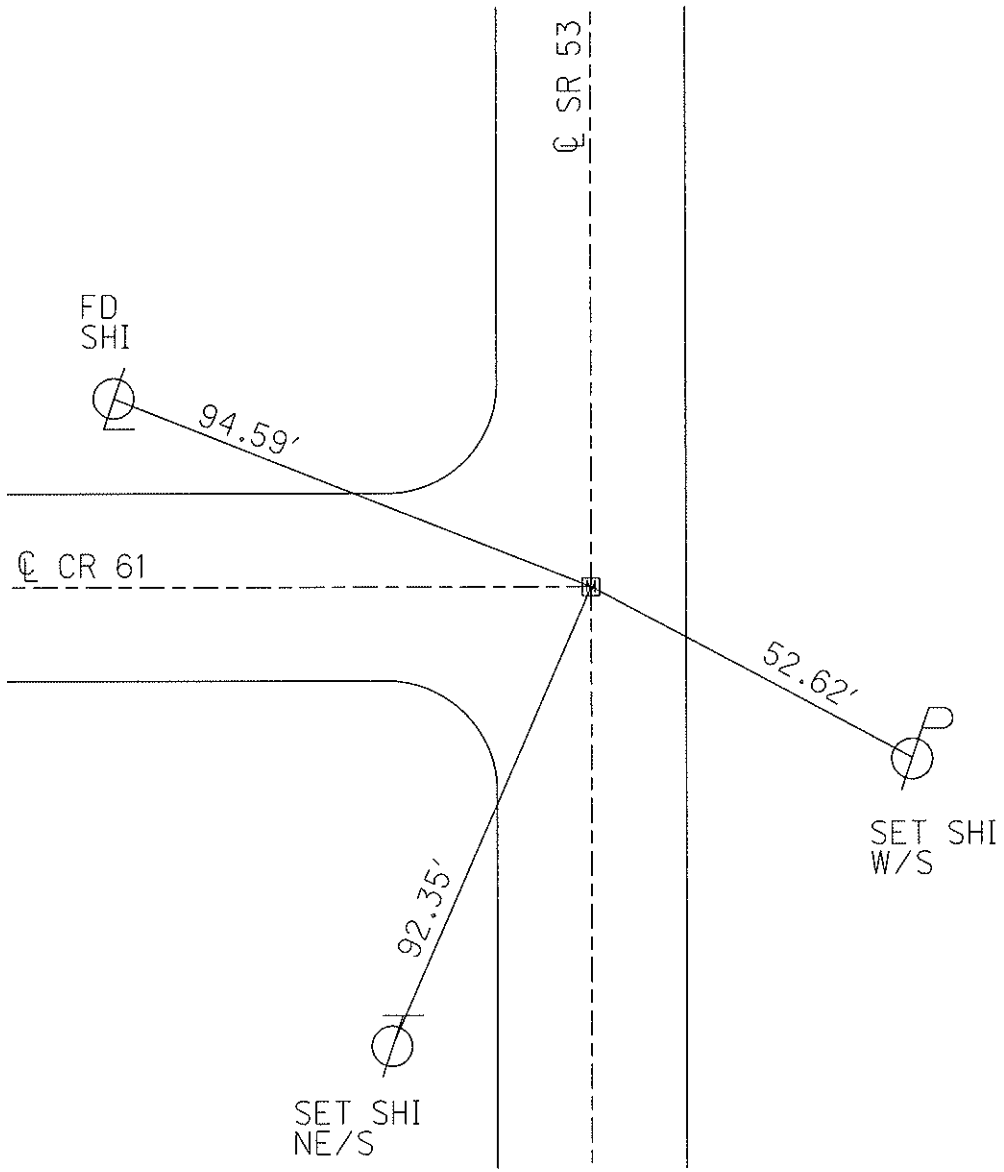
S.L.M. 986+33.12

Grid: Northing: 576641.6245 Easting: 1784868.8592



FD MON.BOX
GPS, SV121
6/1/10, KPM

GPS, FIN121
10/4/11, RJL



PERSONNEL	TITLE	PERSONNEL	TITLE
Schneider			
Mosser			
Garbour			

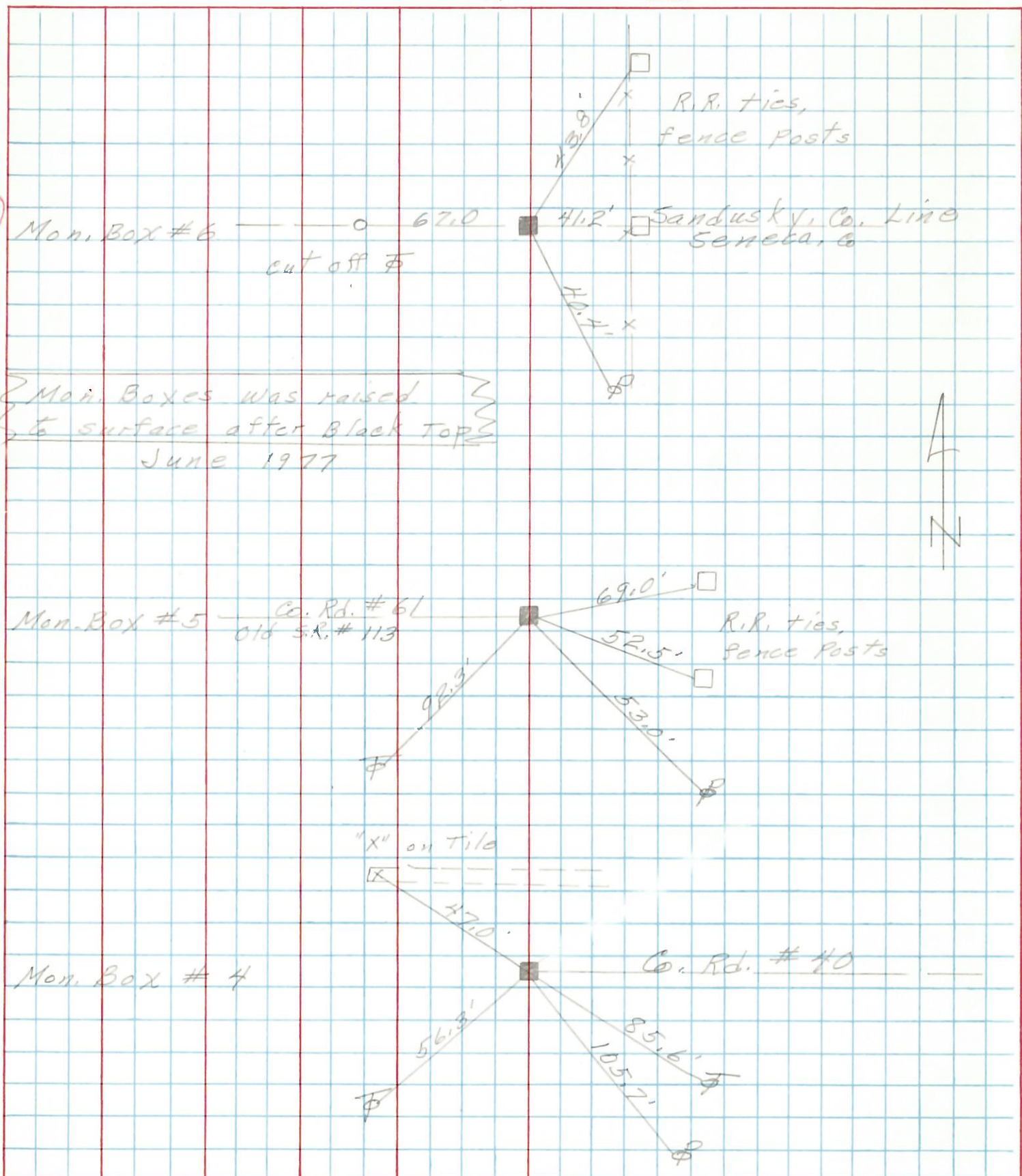
COUNTY Seneca DATE 3-17-77

S. R. 53 WEATHER cloudy

SEC. 6 & 5 TEMP. 35°

DESCRIPTION Tiffin to Sandusky Co. Line JOB NO.

LEFT CENTER LINE RIGHT



PERSONNEL TITLE PERSONNEL TITLE

COUNTY Seneca DATE 10-23-69

Schneider

Mosser

Barbour

Boots

S. R. 53

WEATHER Fair

SEC. Tiffin to San. Co. line TEMP. 35°

DESCRIPTION Ties for Control Points

JOB NO.

LEFT CENTER LINE RIGHT

