

O.D.O.T. DISTRICT 2 SURVEY OFFICE (USE ONLY)

PERSONNEL

REFERENCE NO. 77

SHEET 26 OF 26

NOTES MOSE

DATE 6/14/11

ROUTE SR 53

H.C. LUMBREZER

WEATHER CLOUDY

COUNTY SENECA

R.C. HARBAUGH

TEMP. 70°

TOWNSHIP PLEASANT

SECTION 6

T 3 N R 15 E

TYPE MONUMENT MON.BOX

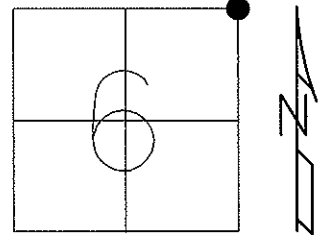
ON SURFACE - ~~BELOW~~ ON

~~LEFT~~ - C PAV'T - RIGHT 9.1'

2.0' RT TO RT EDGE PAVEMENT

S.L.M. 1015+34.25

Grid: Northing: 579541.5342 Easting: 1784953.1384



FD MON.BOX
GPS, SV122
6/1/10, KPM

GPS, FIN122
10/4/11, RJL

SR 53

Sandusky Co. Line

Seneca Co. Line

69.12'
SET SHI
E/S

40.23'
SET SHI
W/S



PERSONNEL TITLE PERSONNEL TITLE

Schneider

COUNTY Seneca

DATE 3-17-77

Mosser

S. R. 53

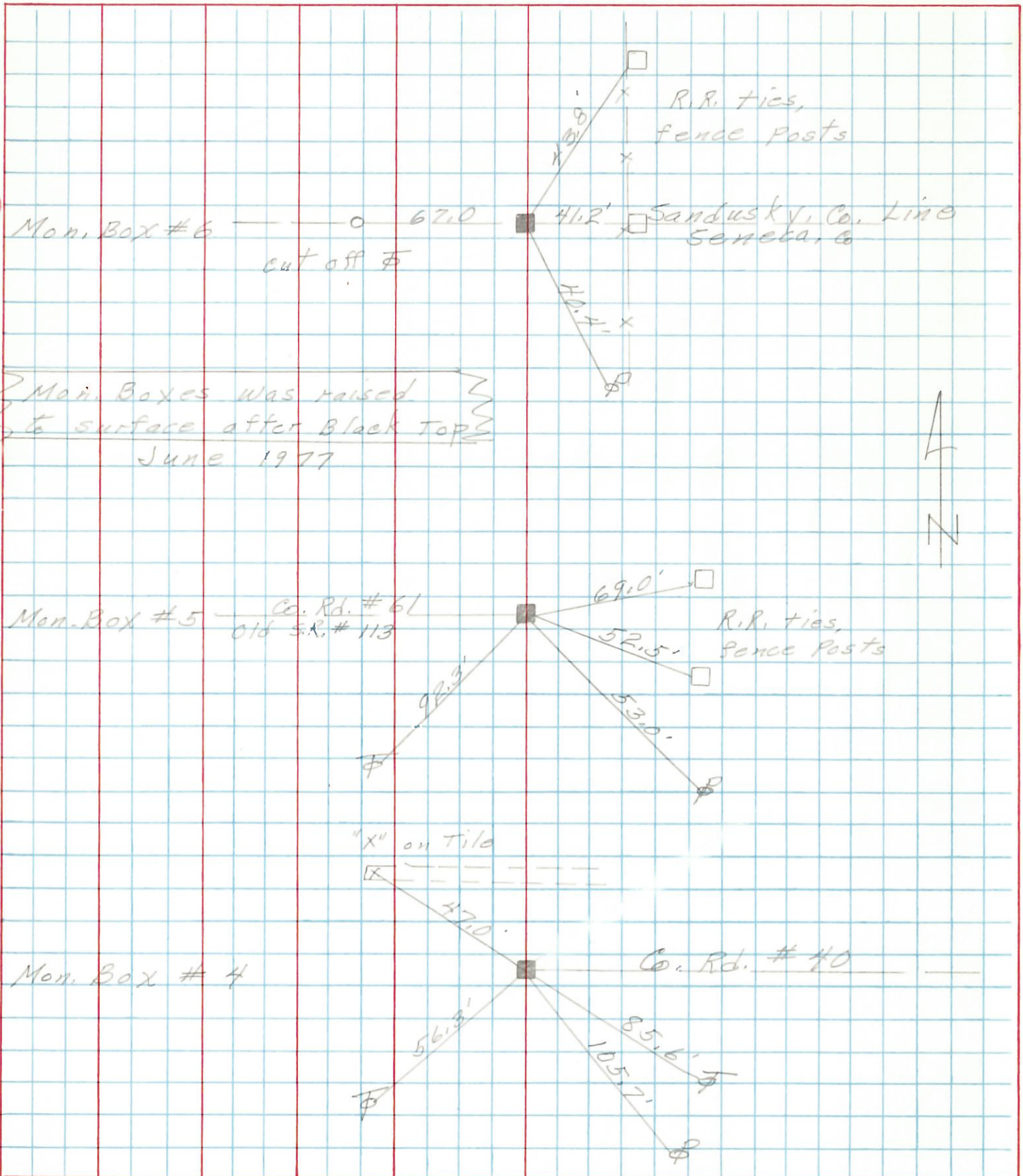
WEATHER cloudy

Garbour

SEC. 6 & 5

TEMP. 35°

DESCRIPTION Tiffin to Sandusky Co. Line LEFT CENTER LINE RIGHT JOB NO.



77

76

75

PERSONNEL TITLE PERSONNEL TITLE

COUNTY Seneca DATE 10-23-69

Schneider

Mosser

Barbour

Potts

S. R. 53

WEATHER Fair

SEC. Tiffin to San. Co. Line TEMP. 35°

DESCRIPTION Ties for Control Points

JOB NO.

LEFT

CENTER LINE

RIGHT

