

FED. RD. DIST. NO.	STATE	PROJECT	FISCAL YEAR
10	OHIO		1939

S.H. 267 SEC. "B"
SENECA COUNTY

STATE OF OHIO DEPARTMENT OF HIGHWAYS

UPPER SANDUSKY ~ BELLEVUE ROAD

S.H. 267 SEC. "B" SENECA COUNTY EDEN TOWNSHIP

CONVENTIONAL SIGNS

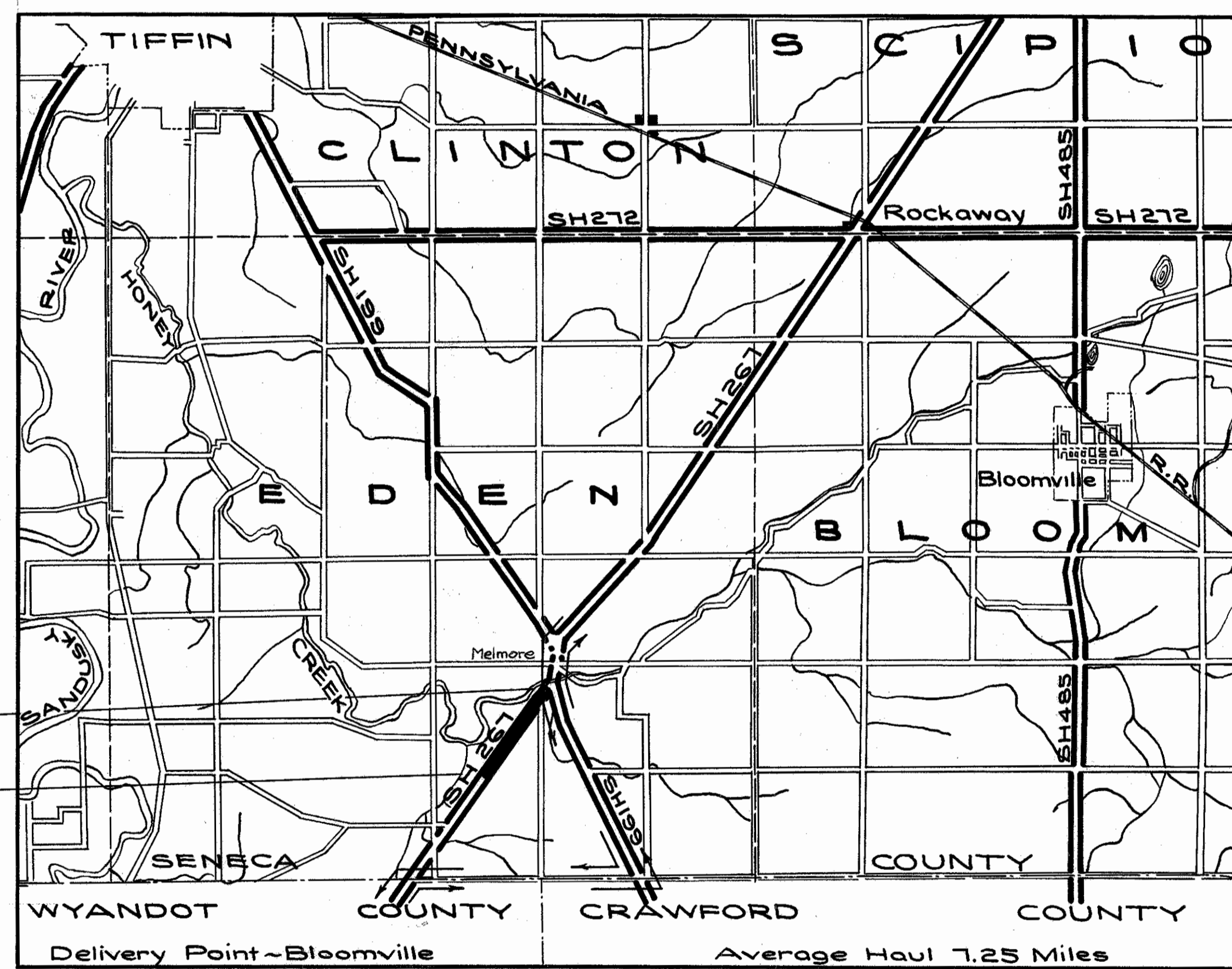
Township Line	-----
Section Line	- - - - -
City or Village Line	=====
Property Line	-----
Fence	-----x-----
Center Line	-----o-----
Steam Railroad	-----
Pole Line~Electric	E E E
Pole Line~Telephone	T T T
Guard Rail (New)	-----o-----
Guard Rail (Old)	-----o-----
Hedge	o o o o o o o o o o
County Line	-----

INDEX OF SHEETS

TITLE SHEET	1
TYPICAL SECTION	2
PLAN AND PROFILE	3-5
CROSS-SECTIONS	6-8
STRUCTURES AND APPROACHES	9
SUMMARY	10

LINE DATA

Beginning of Project	Sta. 0+00
End of Project	Sta. 52+50
Gross Length of Project	5250.00 Lin. Ft.
Additions~None	
Deductions~For Br. No. Se-67-22, Sta. 44+26.35 to Sta. 44+58.70= 32.35 Lin. Ft.	
Net Length of Project	5250.00-32.35= 5217.65 Lin. Ft. or 0.988 Miles



LOCATION PLAN
Scale of Miles

Portion to be improved
 State highways
 Other roads
 Detours shown thus

SCALES

Plan	1" = 100'
Profile~Horizontal	1" = 100'
Vertical	1" = 10'
Cross Sections	1" = 5'

The Standard Specifications of the State of Ohio, including changes and Supplemental Specifications listed in the proposal shall govern this improvement.

I hereby approve these plans and declare that the making of this improvement will require the closing to traffic of the highway and that a detour will be provided as shown on the plans and estimates.

The right of way necessary for this improvement will be provided by the State of Ohio.

Approved _____
Date _____ Resident District Deputy Director

Approved *T. S. Edwards* PF 447
Date _____ Resident Division Deputy Director

Approved _____
Date _____ Chief Engineer, Bureau of Maintenance

Approved *J. B. Hogan*
Date *7-31-39* Chief Engineer, Location and Right-of-Way

Approved *H. J. Jones*
Date _____ First Ass't Director & Chief Engineer

Approved *Rev. J. Reigitt*
Date *7-31-39* Director of Highways

Supplemental Prints of Standard Construction Drawings

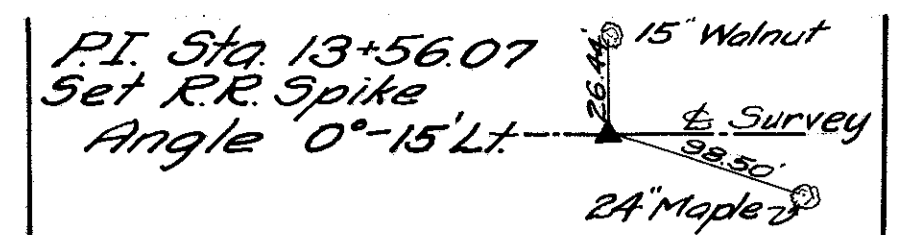
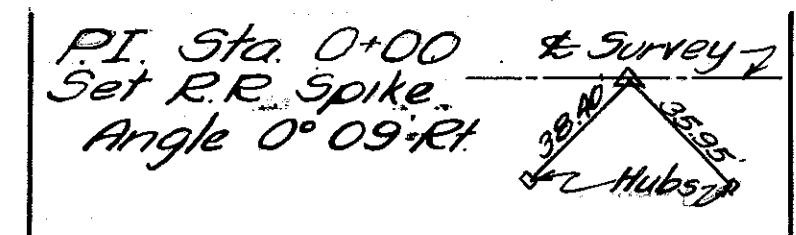
Drawing No.	Date
E-5 No. 1	8-1-38
S-27 RC. 3	3-1-39
I-1, 2, 3, 4 & 5	3-1-39
I-8 C.B. 1-2 & 2-2	3-1-39
G-7.07	10-1933

Note: Changes made in red ink on sheet no. 5 were added August 28, 1939.

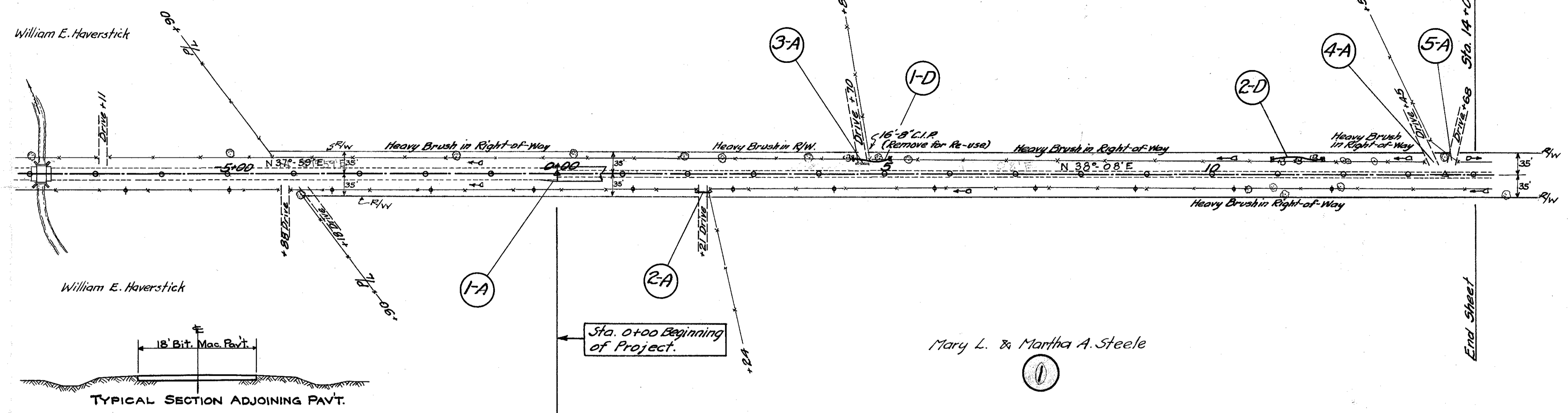
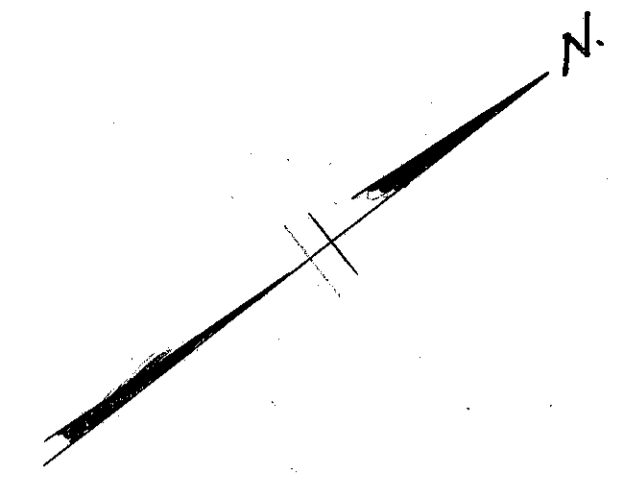


File No.	Seneca County S.H. 267 Sec. "B"
Date of Letting	
Contract No.	

File 307



Mary L. & Martha A. Steele



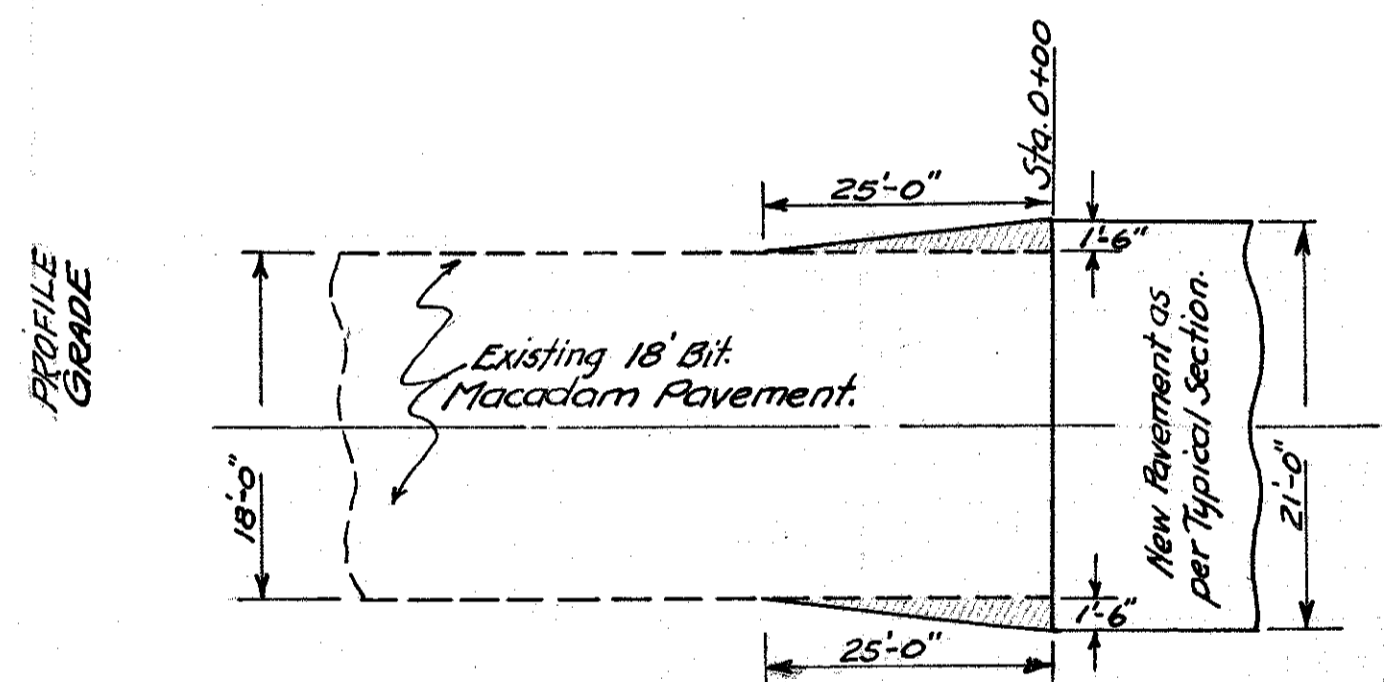
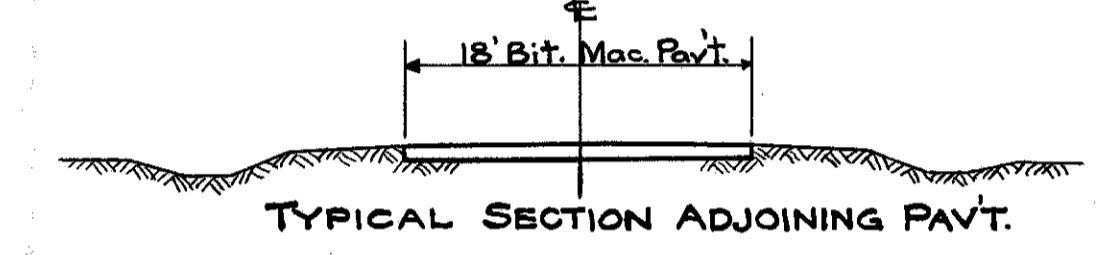
ROADWAY DRAINAGE - "D"

Ref. No.	Station From	Station To	Side	Lin. Ft. Pipe for Storm Sewer 12"	Riprap (Grouted) Sq. Yds.	
1-D	4+50	5+10	Lt.	60	6	See Note.
2-D	10+90	11+70	Lt.	80	6	See Note.
TOTALS				140	12	

Note - Place 3 Sq. Yds. of Riprap (Grouted) at ends of the Storm Sewer Lines, Ref. 1-D and 2-D.
 Riprap shall be placed to dimensions and slopes indicated by Engineer.

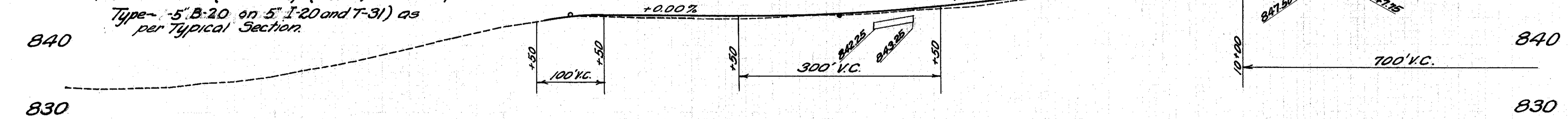
APPROACHES - "A"

Ref. No.	Station	Side	Extra Pavement Area Transition Sq. Yds.	Driveway Sq. Yds.	Aggregate 5-17 Cu. Yds.	Cast Iron Pipe Removed for Re-use - Lin. Ft.	Pipe Relaid for Drives - Lin. Ft.
1-A	0+00	Rt. & Lt.	4.2				
2-A	2+21	Rt.		16	2		27
3-A	4+70	Lt.		16	2	16	
4-A	13+45	Lt.		16	2		
5-A	13+68	Lt.		16	2		
TOTALS			4.2	64	8	16	27



Detail of Pavement Transition, Sta. 0+00 to Sta. 0-(0+25) = 25 Lin. Ft.
 Area of Extra Pavement required for Transition (both sides) = (1.5 x 25) x 2 = 75 Sq. Yds.
 Type - 5" B-20 on 5" I-20 and T-31 as per Typical Section.

Station	Elevation
843.57	
844.13	
844.32	
844.32	
844.32	
844.32	
844.36	
844.49	
844.70	
844.99	
845.36	
845.82	
846.32	
846.82	
847.32	
847.61	
847.90	
848.19	
848.48	
848.77	
849.06	
849.32	
849.53	
849.69	
849.79	
849.83	
849.83	
849.77	
849.65	
849.50	



B.M. N.E. Cor. of Lt. Curb of Bridge Sta. 7+25 Elev. 834.41

B.M. R.R. Spike in 36" Stump 100' Rt. Sta. 2+05 Elev. 846.23

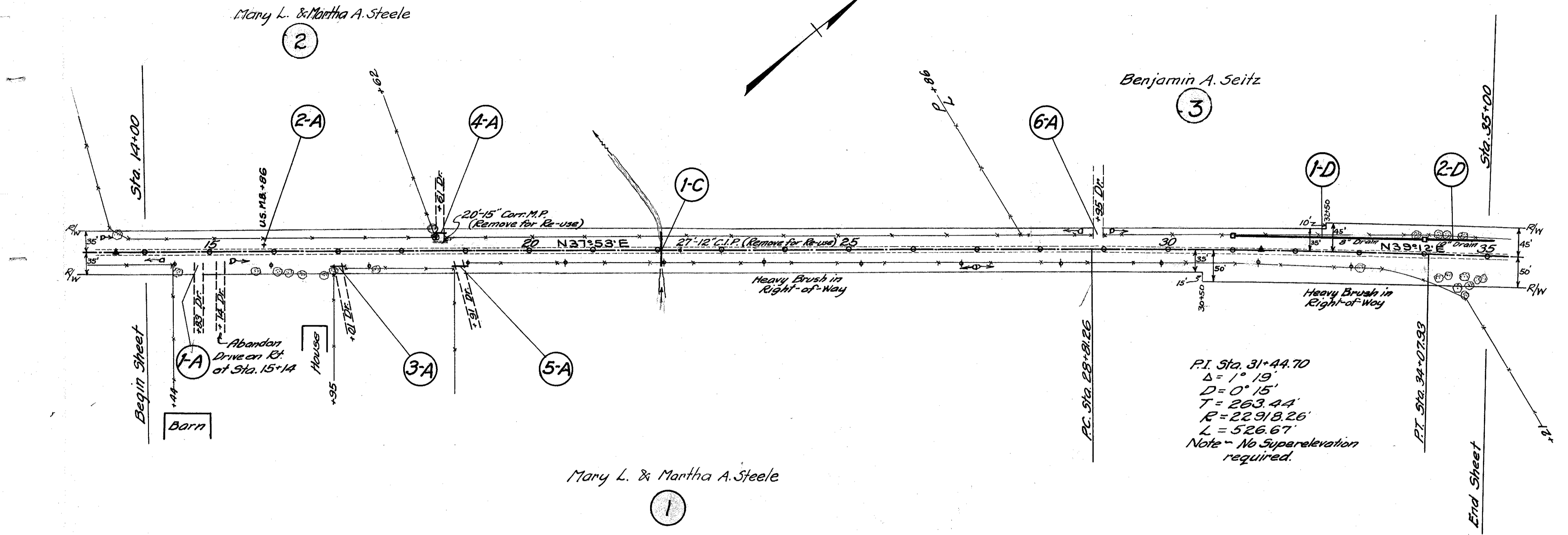
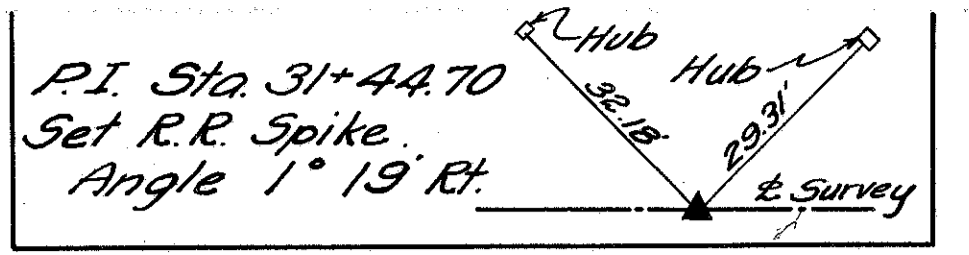
Existing & Grade	Station	Elevation
833.78	8	
833.68	7	
833.76	6	
833.89	5	
834.33	4	
834.55	3	
836.29	2	
836.22	1	
837.09	0	
838.04	0	
839.27	0	
840.57	0	
841.70	0	
842.71	0	
843.57	0	
844.24	0	
844.27	0	
844.01	0	
844.04	0	
843.99	0	
843.97	0	
844.04	0	
844.30	0	
844.43	0	
844.77	0	
845.04	0	
845.42	0	
845.92	0	
846.56	0	
847.05	0	
847.92	0	
847.75	0	
847.94	0	
848.21	0	
848.61	0	
848.80	0	
849.06	0	
849.26	0	
849.51	0	
849.92	0	
849.69	0	
849.62	0	
849.50	0	
849.43	0	

EXCAVATION	80	CU. Yds.
EMBANKMENT	1020	CU. Yds.
EMBANKMENT +20%	148	CU. Yds.

TREES AND STUMPS

Station	Side	Description	Disposal
0-(1+47)	29' Lt.	36" Ash	No work.
0+25	30' Lt.	6" Wild Cherry	No work.
1+58	25' Lt.	10" Elm	Remove, Item E-9
2+53	24' Lt.	9" Elm	Remove, Item E-9
3+85	23' Lt.	9" Elm	Remove, Item E-9
4+42	21' Lt.	3-4" Ash	Remove, Item E-1
4+91	25' Lt.	40" Ash	No work.
5+37	21' Lt.	9" Ash	Remove, Item E-9
10+54	22' Rt.	12" Stump	Remove, Item E-9
10+93	20' Rt.	10" Locust	Remove, Item E-9
11+11	33' Rt.	24" Locust	No work.
11+05	21' Lt.	12" Walnut	No work.
11+31	24' Lt.	22" Locust	No work.
11+54	27' Lt.	48" Locust	No work.
11+96	19' Rt.	12" Locust	Remove, Item E-9
12+02	22' Lt.	12" Stump	Remove, Item E-9
12+06	20' Lt.	12" Stump	Remove, Item E-9
12+48	20' Lt.	10" Stump	Remove, Item E-9
12+49	20' Lt.	10" Stump	Remove, Item E-9
13+58	27' Lt.	15" Walnut	No work.

Total Removal of Trees and Stumps = 11



ROADWAY DRAINAGE "D"

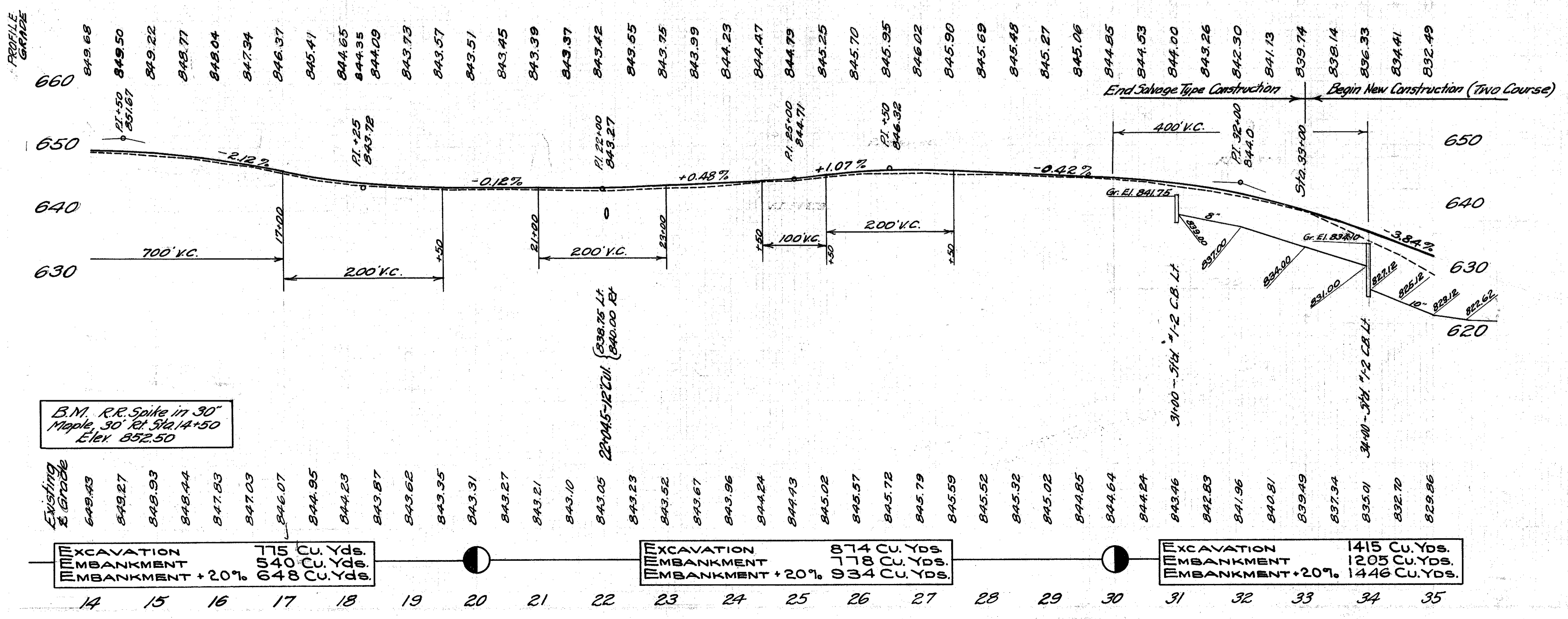
Ref. No.	Station From To	Side	Lin. Ft. Pipe for Roadway Drainage	Lin. Ft. Pipe for Storm Sewer	No. F-2 Catch Basins
1-D	31+00 34+00	Lt.	298		
2-D	34+00 35+00	Lt.		99	1
TOTAL			298	99	2

APPROACHES "A"

Ref. No.	Station	Side	Extra Pav't. Area Sq. Yds.	Aggregate Pipe Relaid for 5'-17' Drives - Lin. Ft. for Re-use - Lin. Ft.	Cur. M.P. Removed
1-A	14+83	Rt.		2	
2-A	15+86	Lt.	33.3	16	
3-A	17+01	Rt.		2	16
4-A	18+61	Lt.		2	20 20
5-A	18+91	Rt.		2	24
6-A	28+95	Lt.		2	
TOTALS			33.3	80	10 16 24 20 20

STRUCTURES "C"

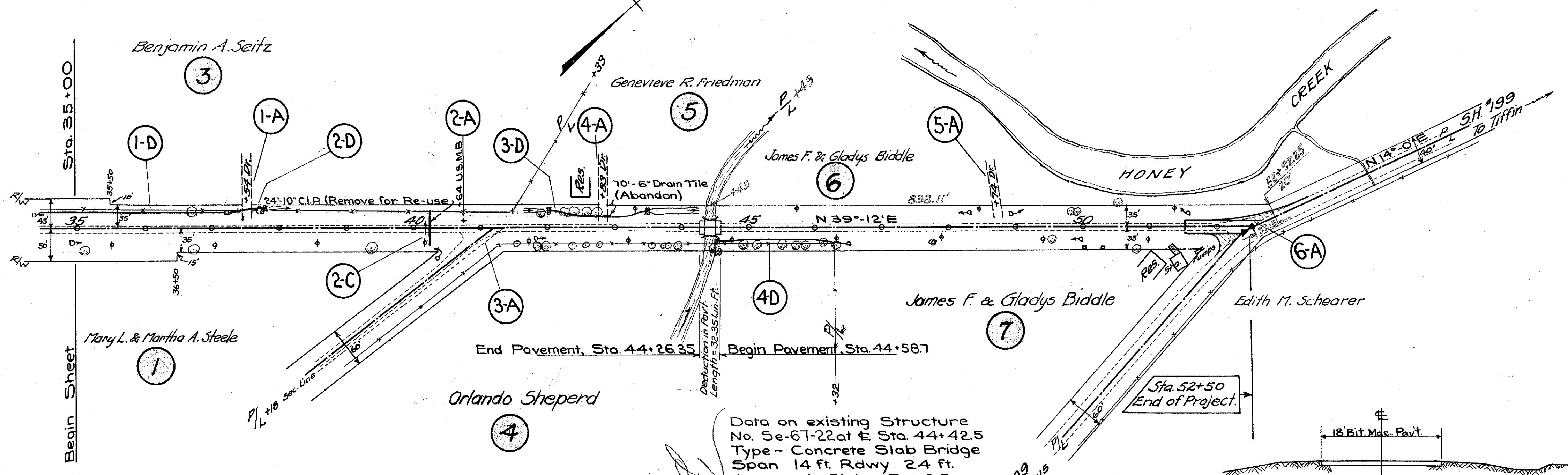
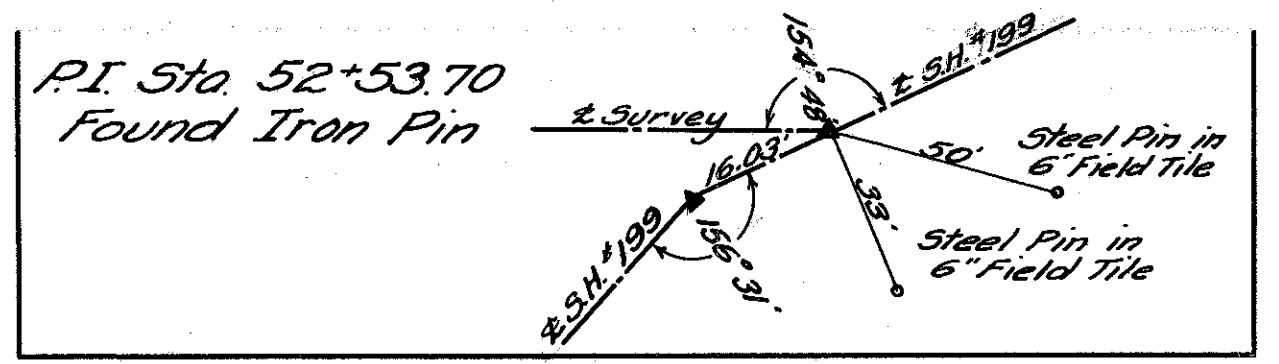
Ref. No.	Station	Type	Size	Remarks
1-C	22+04.5	Pipe Culvert	12" x 54"	See details on sheet No. 9



TREES AND STUMPS

Station	Side	Description	Disposal
14+51	32' Rt.	24" Maple	No Work
15+70	30' Rt.	20" Walnut	No Work
16+06	31' Rt.	20" Ash	No Work
16+24	34' Rt.	30" Elm	No Work
16+46	38' Rt.	20" Maple	No Work
16+76	38' Rt.	20" Maple	No Work
16+95	31' Rt.	24" Ash	No Work
17+59	28' Rt.	24" Locust	No Work
18+45	35' Lt.	20" Locust	No Work
18+50	22' Lt.	20" Locust	Remove, Item E-9
33+03	23' Rt.	12" Wild cherry	Remove, Item E-9
33+92	29' Lt.	18" Tree (Dead)	Remove, Item E-9
34+23	31' Lt.	15" Ash	Remove, Item E-9
34+27	37' Rt.	12" Poplar	Remove, Item E-9
34+37	30' Lt.	20" Ash	Remove, Item E-9
34+41	32' Rt.	12" Stump	Remove, Item E-9
34+54	32' Rt.	8" Wild cherry	No Work
34+61	36' Lt.	12" Elm	No Work
34+63	29' Lt.	36" Elm	No Work
34+67	44' Rt.	6" Ash	No Work
34+87	37' Rt.	24" Oak	No Work
34+93	34' Rt.	18" Oak	No Work
34+95	34' Rt.	18" Oak	No Work
34+67	62' Rt.	18" Ash	No Work
Total		Removal of Trees and Stumps = 7	

Revised 1951



ROADWAY DRAINAGE "D"

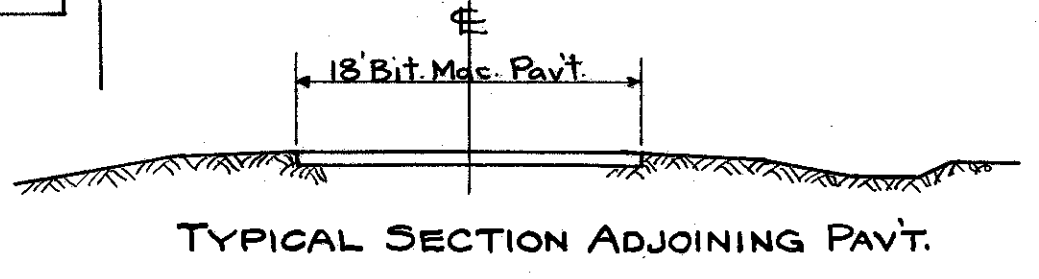
Ref. No.	Station	Side	Lin. Ft. Pipe for Storm Sewer				No. 1-2 Catch Basins Each	Lin. Ft. Pipe for Storm Sewer Outlet			Riprap (Grouted) Sq. Yds.
			8"	10"	12"	15"		10"	15"	18"	
1-D	35+00	Lt.			224						
2-D	37+25	Lt.			55			10			3
3-D	42+00	Lt.				140		10			6
4-D	44+48	Rt.	191					10			3
TOTALS			191	224	55	140	2	10	10	10	12

Note - Place 3 Sq. Yds. of Riprap (Grouted) at Outlet Ends of Storm Sewer Lines, Ref 2-D and 4-D and at each end of Line 3-D. Riprap shall be placed to dimensions and slopes indicated by Engineer.

APPROACHES "A"

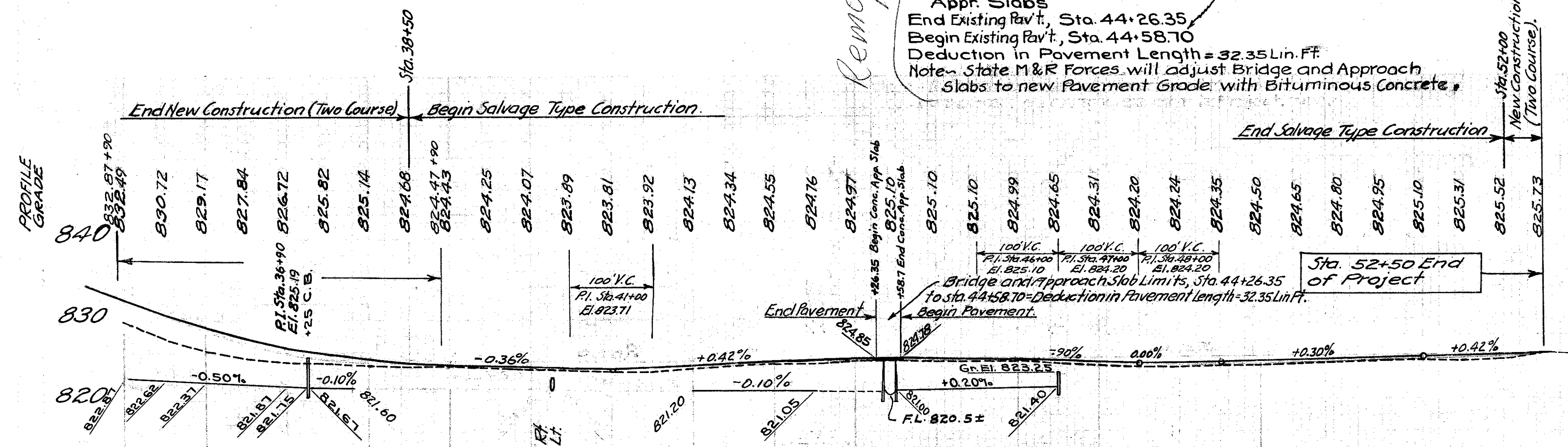
Ref. No.	Station	Side	Extra Pavement Area		Aggregate 1-17 Cu. Yds.
			Mail Box Sq. Yds.	Driveway Approach Sq. Yds.	
1-A	37+54	Lt.		16	2
2-A	40+64	Lt.	333	16	2
3-A	41+18	Rt.		363	
4-A	42+83	Lt.		16	2
5-A	48+14	Lt.		16	2
6-A	52+50			108.0	
TOTALS			333	48	144.3

Data on existing Structure No. 5e-67-22 at Sta. 44+42.5
 Type - Concrete Slab Bridge
 Span 14 ft. Rdwy 24 ft.
 Approach Slabs - Reinf. Conc., 20 ft. wide, 7" Thick
 Condition - Good. No work required on Structure or Appr. Slabs
 End Existing Pav't, Sta. 44+26.35
 Begin Existing Pav't, Sta. 44+58.70
 Deduction in Pavement Length = 32.35 Lin. Ft.
 Note - State M & R Forces will adjust Bridge and Approach Slabs to new Pavement Grade with Bituminous Concrete.



STRUCTURES "C"

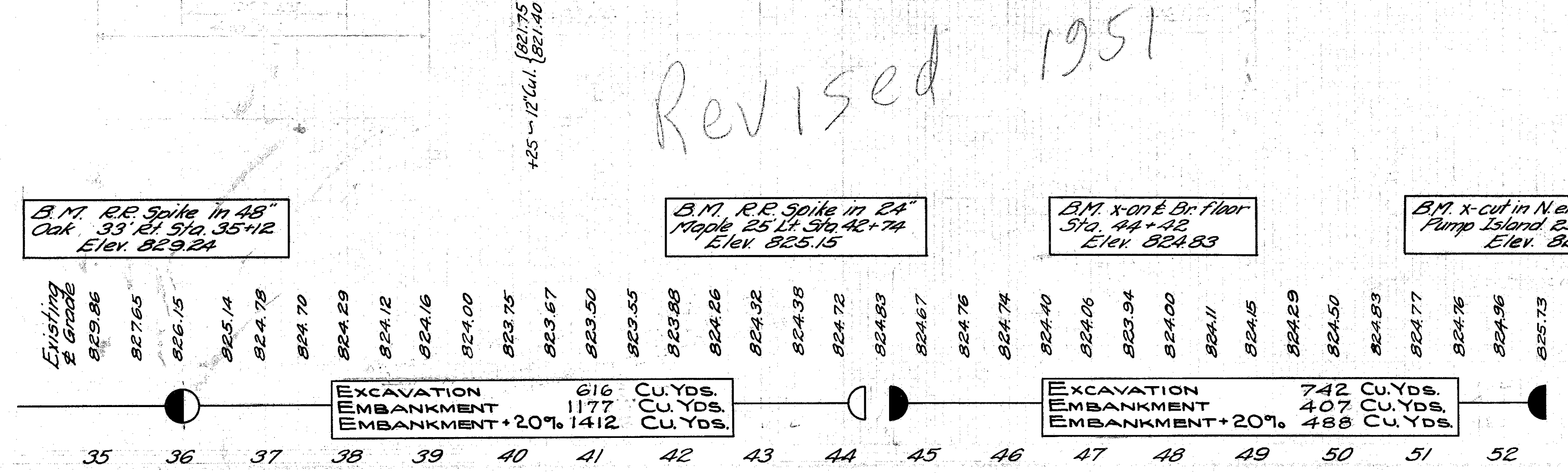
Ref. No.	Station	Type	Size	Remarks
2-C	40+25	Pipe Culvert	12" x 48'	See details on Sheet No. 9



TREES AND STUMPS

Station	Side	Description	Disposal
35+12	33' Rt.	48" Oak	No Work
36+72	24' Lt.	20" Maple	Remove, Item E-9
36+72	33' Rt.	14" Oak	No Work
37+66	25' Lt.	20" Butternut	No Work
39+37	31' Rt.	16" Ash	No Work
41+57	25' Rt.	2-6" Stumps	Remove, Item E-1
41+88	27' Rt.	19" Walnut	No Work
41+99	25' Rt.	24" Walnut	No Work
41+92	22' Lt.	3" Cherry	Remove, Item E-1
42+24	25' Lt.	30" Maple	No Work
42+39	25' Lt.	20" Maple	No Work
42+38	25' Rt.	9" Stump	Remove, Item E-9
42+58	26' Rt.	24" Stump	Remove, Item E-9
42+60	26' Lt.	20" Maple	No Work
42+76	26' Rt.	24" Stump	Remove, Item E-9
42+74	25' Lt.	24" Maple	No Work
43+56	25' Rt.	10" Stump	Remove, Item E-9
43+75	25' Rt.	18" Stump	Remove, Item E-9
43+80	25' Rt.	14" Stump	Remove, Item E-9
43+93	27' Rt.	38" Elm	No Work
44+47	35' Rt.	24" Ash	No Work
44+47	31' Rt.	10" Ash	No Work
44+48	31' Rt.	10" Ash	No Work
44+93	24' Rt.	8" Elm	No Work
45+12	24' Rt.	12" Stump	Remove, Item E-9
45+52	24' Rt.	15" Elm	No Work
45+71	25' Rt.	24" Wild Cherry	No Work
45+86	28' Rt.	5" Locust	No Work
46+14	24' Rt.	24" Locust	No Work
46+33	23' Rt.	14" Locust	No Work
47+77	23' Rt.	4" Ash	Remove, Item E-1
49+87	24' Lt.	6" Walnut	No Work
49+88	24' Lt.	6" Walnut	No Work
49+93	22' Lt.	4" Walnut	No Work
49+53	17' Rt.	12" Stump	Remove, Item E-9
50+55	38' Lt.	8" Elm	No Work
50+83	33' Rt.	30" Apple	No Work

Total Removal of Trees and Stumps = 9



B.M. R.R. Spike in 48" Oak, 33' Rt. Sta. 35+12 Elev. 829.24

B.M. R.R. Spike in 24" Maple, 25' Lt. Sta. 42+74 Elev. 825.15

B.M. x-on E. Br. floor Sta. 44+42 Elev. 824.83

B.M. x-cut in N. end Conc. Foundation Pump Island, 25' Rt. Sta. 51+80. Elev. 822.31

Area A = $[300 \times (75 - \frac{141}{2})] \div 9 = 50$ Sq. Yds.
 Area B = $[20 \times (50 - \frac{416}{2})] \div 9 = 58$ Sq. Yds.
 Total Area of Extra Pavement Required = 108 Sq. Yds.

Revised 1951