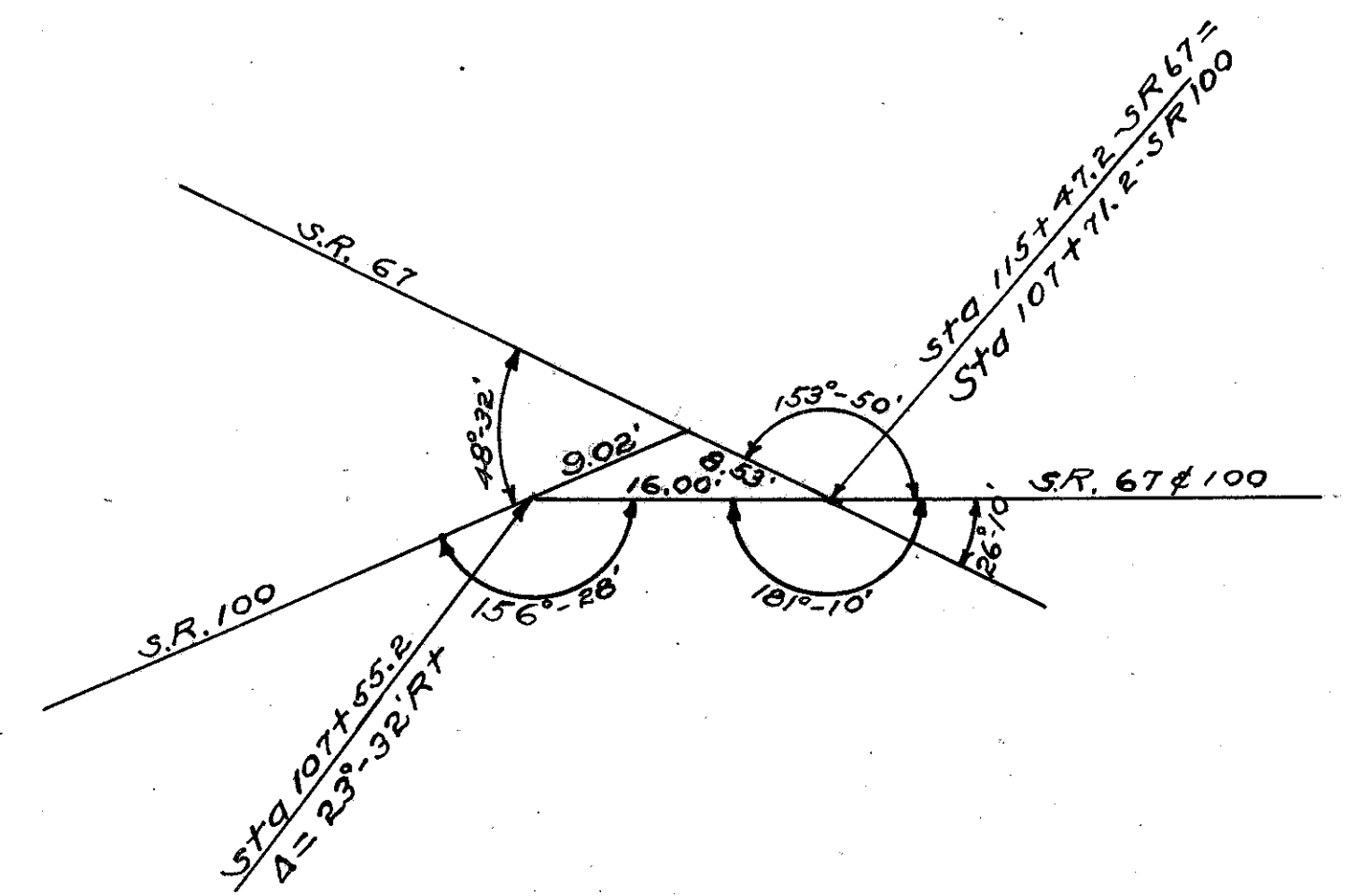
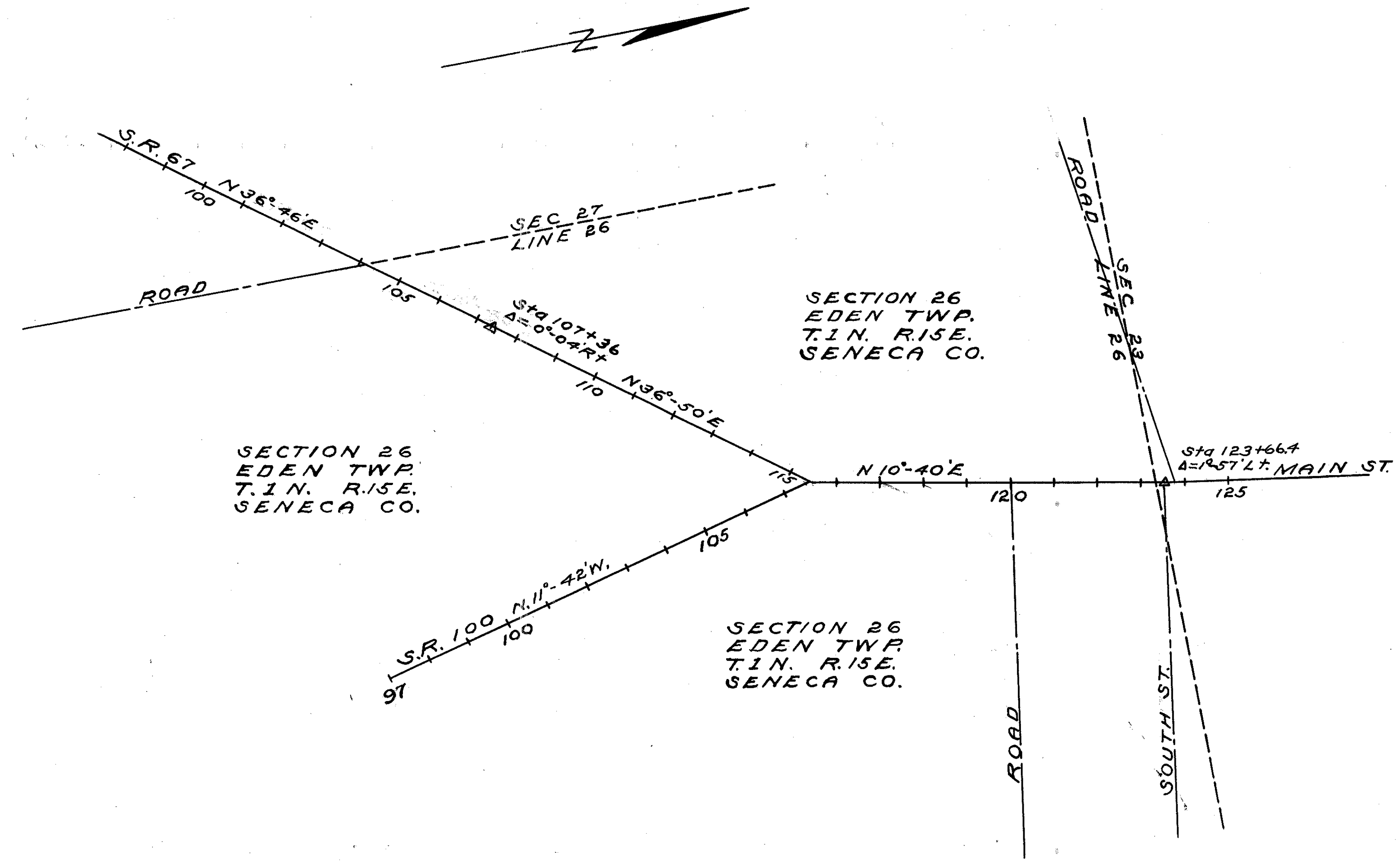


Scanned July 1997

# LOCATION PLAN SEN-67(1.32-2.32) & SEN-100-00 UPPER SANDUSKY-BELLEVUE & BUCYRUS-TIFFIN ROADS 1951 DEPARTMENT OF HIGHWAYS-STATE OF OHIO

0 100 200  
Scale - 1" = 200'

RECORDED: PLAT BOOK 1  
PAGE 63



I hereby certify this to be a true and correct platting of the center line of survey as determined by the Ohio Department of Highways  
Date 6-11-51 Division Deputy Director George W. Ruben

CENTER LINE REFERENCE MONUMENTS WILL BE SET BEFORE OR AFTER CONSTRUCTION

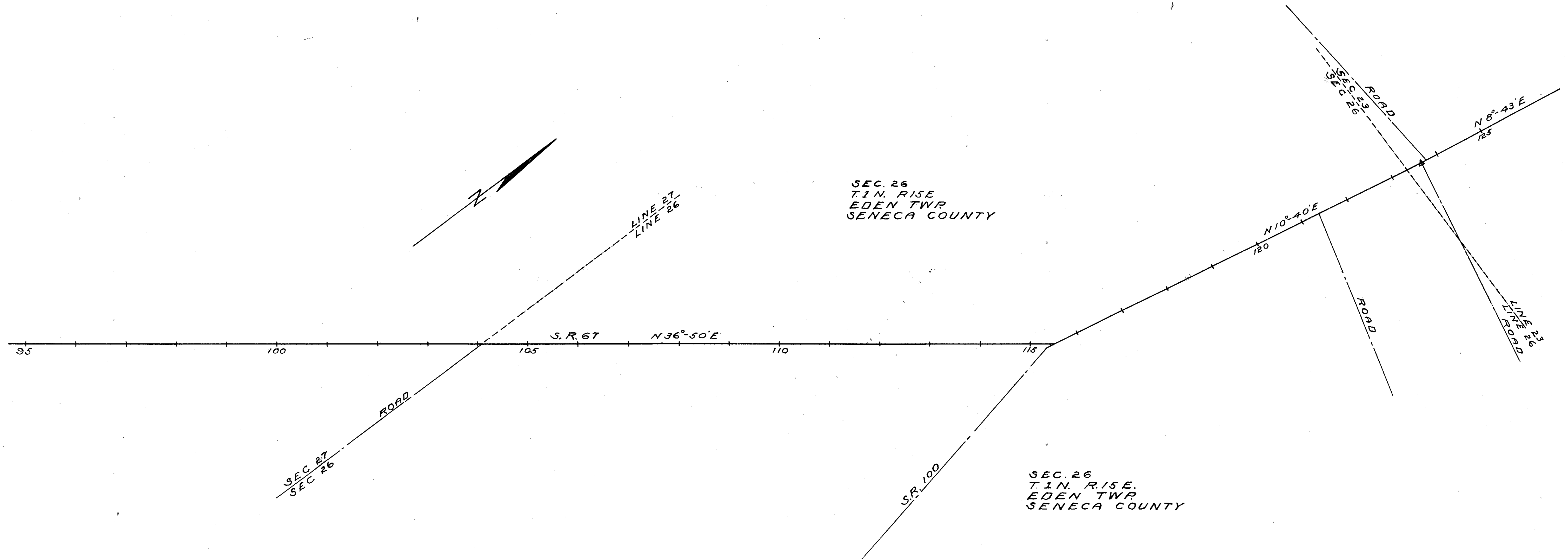
97+00	102+00	107+36	111+00	115+47.2	119+00	123+66.7	97+00	102+00	107+55.2

Roll 7 #2 6-10

# LOCATION PLAN SEN-67-(132-232) UPPER-SANDUSKY-BELLEVUE ROAD 1951

DEPARTMENT OF HIGHWAYS - STATE OF OHIO

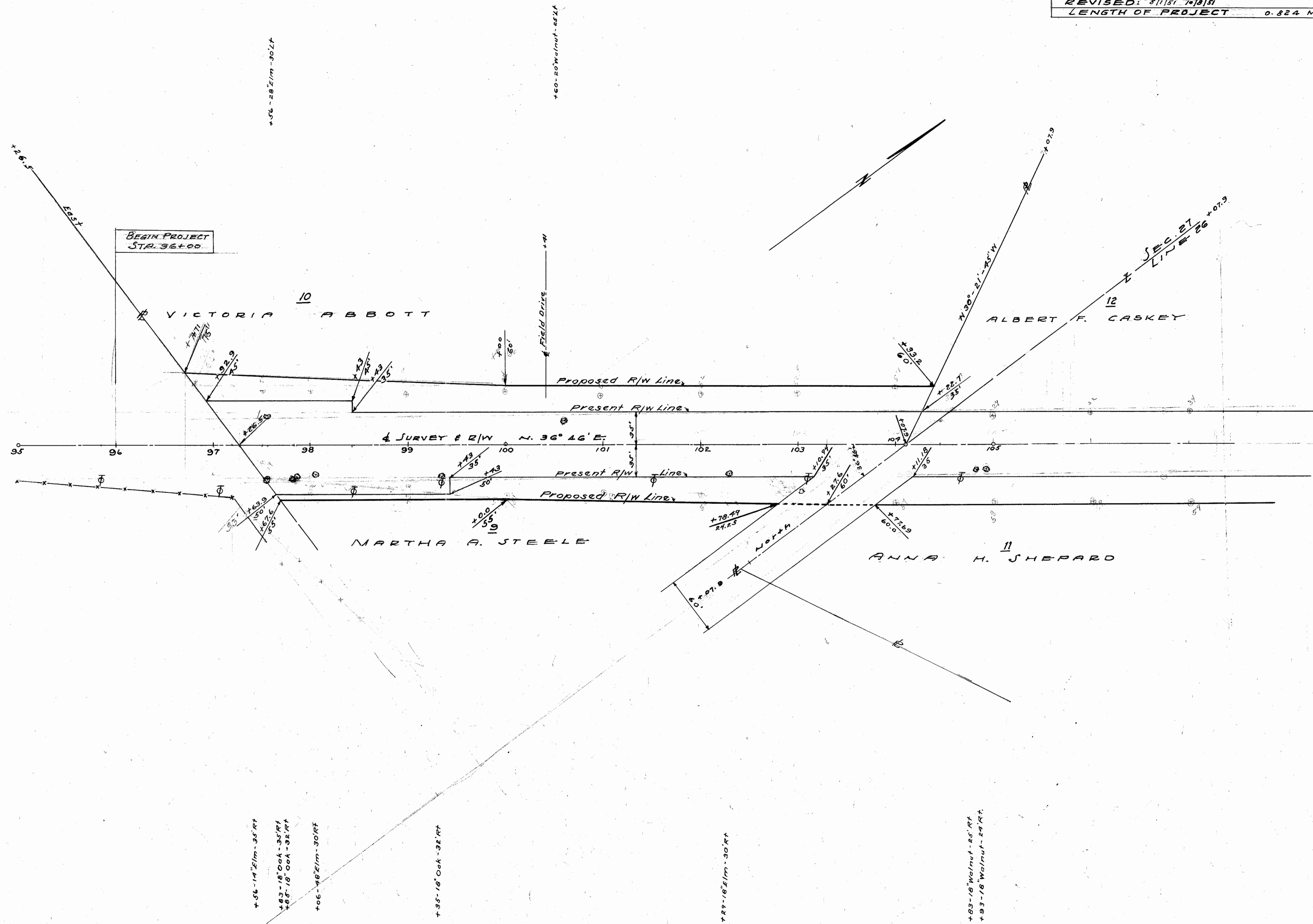
0 50 100  
SCALE - 1" = 100'



I hereby certify this to be a true and correct  
plattling of the center line of survey as  
determined by the Ohio Department of  
Highways  
Date \_\_\_\_\_ Division Deputy Director

Telephone Poles: The Ohio Bell Telephone Co.,  
121 N. Huron St., Toledo, Ohio - Tiffin Exchange.  
Power Poles: Ohio Power Co., Tiffin, Ohio

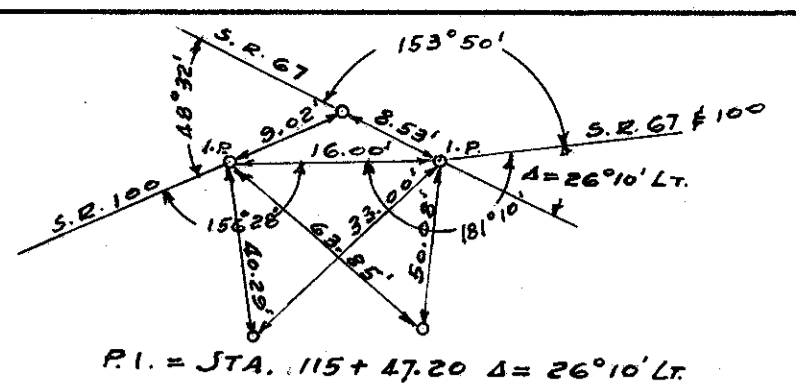
SENECA COUNTY	
SEN-67(1.95-2.32)JEN-100-1.82	
R/W PLANS	
DATE: JUNE 25-1951	DRAWN BY R.R.
REVISED: 8/1/51 7/10/51	
LENGTH OF PROJECT	0.824 MI.



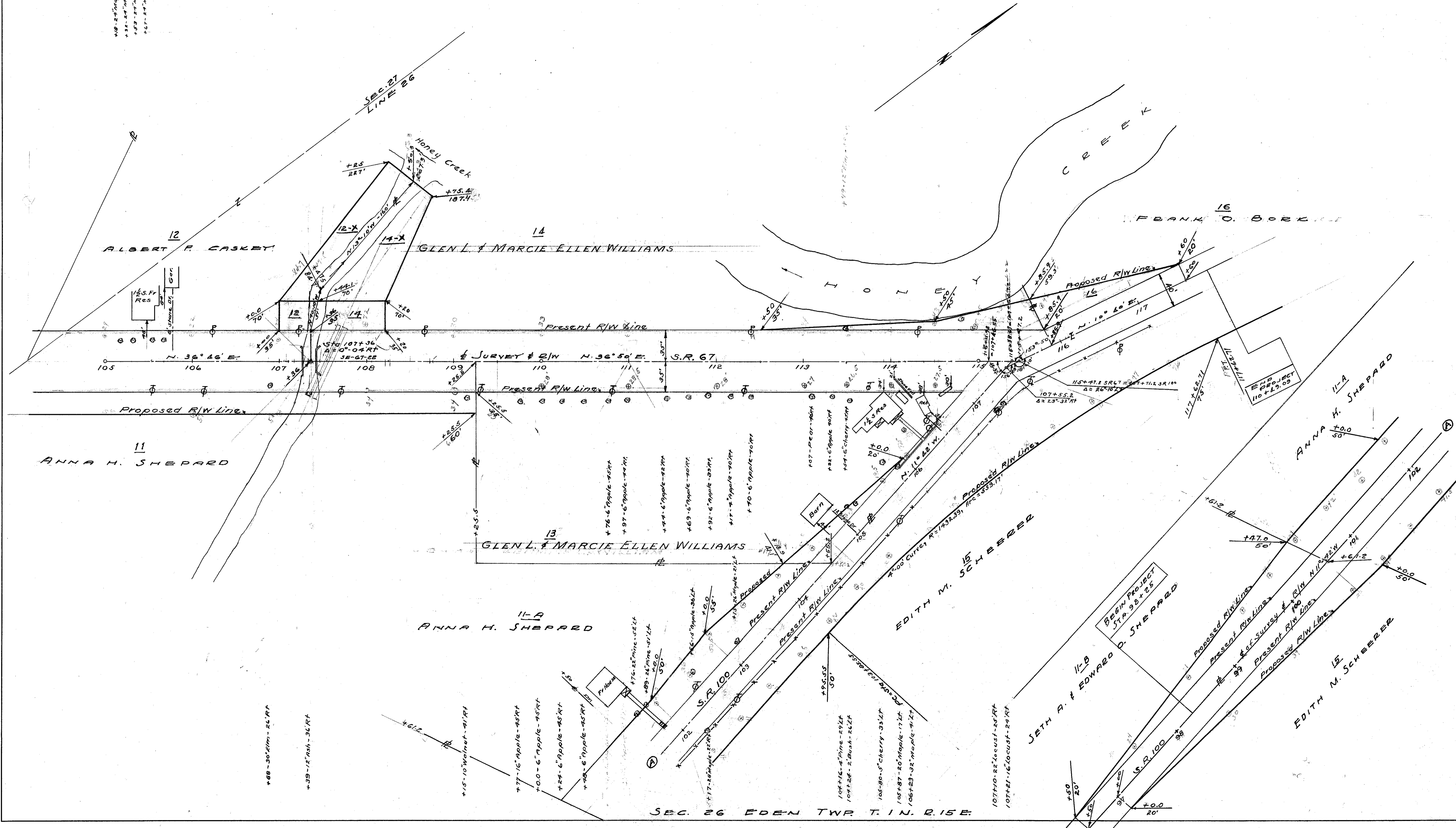
3 SEC. 26 EDEN TWP T. 1 N. R. 15 E.

SENECA COUNTY  
SEN-67(195-232) SEN-100-1.84  
R/W PLANS

DATE: JUNE 25-1951 DRAWN BY: R.P.  
REVISED: 8/1/51 10-8-51  
LENGTH OF PROJECT 0.824 MI.

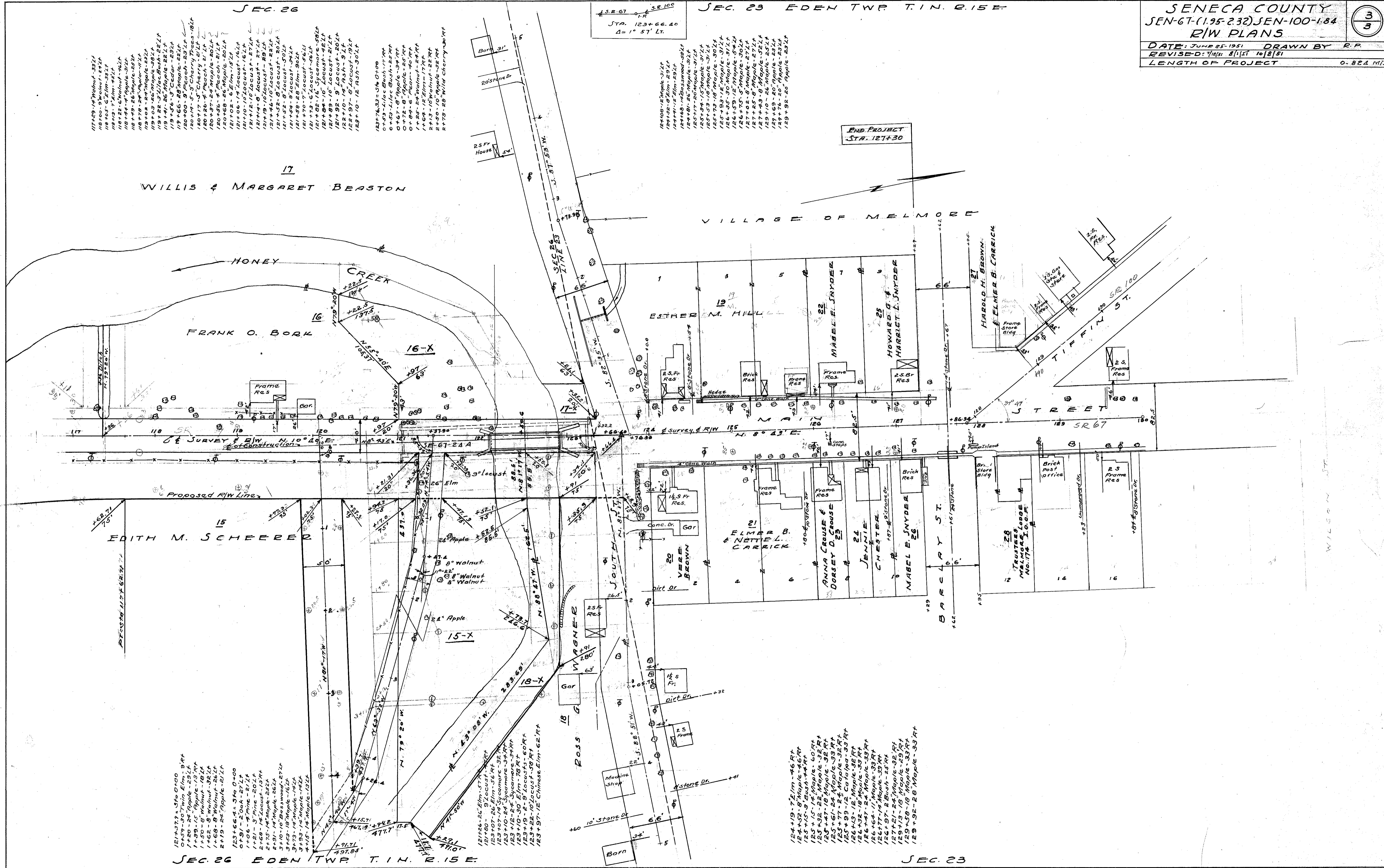


40'-24" Maple - 24' Lt  
+ 31'-24" Maple - 24' Lt  
+ 23'-24" Maple - 24' Lt  
+ 15'-24" Maple - 24' Lt



SEC. 26 EDEN TWP T. 1 N. R. 15 E.

FOR ANY QUESTIONS PLEASE CONTACT ODOT DISTRICT 2 REAL ESTATE AT 419-353-8131



Drawn July 1951

7/15/51

117+29.14' Walnut - 32 1/2"  
 118+00.00' Walnut - 24 1/2"  
 118+65.00' Elm - 33 1/2"  
 119+10.00' Elm - 24 1/2"  
 119+22.00' Walnut - 24 1/2"  
 119+44.00' Maple - 30 1/2"  
 119+66.00' Maple - 30 1/2"  
 119+88.00' Maple - 30 1/2"  
 120+10.00' Cherry - 24 1/2"  
 120+32.00' Cherry - 24 1/2"  
 120+54.00' Maple - 30 1/2"  
 120+76.00' Maple - 30 1/2"  
 120+98.00' Maple - 30 1/2"  
 121+20.00' Maple - 30 1/2"  
 121+42.00' Maple - 30 1/2"  
 121+64.00' Maple - 30 1/2"  
 121+86.00' Maple - 30 1/2"  
 122+08.00' Maple - 30 1/2"  
 122+30.00' Maple - 30 1/2"  
 122+52.00' Maple - 30 1/2"  
 122+74.00' Maple - 30 1/2"  
 122+96.00' Maple - 30 1/2"  
 123+18.00' Maple - 30 1/2"  
 123+40.00' Maple - 30 1/2"  
 123+62.00' Maple - 30 1/2"  
 123+84.00' Maple - 30 1/2"  
 124+06.00' Maple - 30 1/2"  
 124+28.00' Maple - 30 1/2"  
 124+50.00' Maple - 30 1/2"  
 124+72.00' Maple - 30 1/2"  
 124+94.00' Maple - 30 1/2"  
 125+16.00' Maple - 30 1/2"  
 125+38.00' Maple - 30 1/2"  
 125+60.00' Maple - 30 1/2"  
 125+82.00' Maple - 30 1/2"  
 126+04.00' Maple - 30 1/2"  
 126+26.00' Maple - 30 1/2"  
 126+48.00' Maple - 30 1/2"  
 126+70.00' Maple - 30 1/2"  
 126+92.00' Maple - 30 1/2"  
 127+14.00' Maple - 30 1/2"  
 127+36.00' Maple - 30 1/2"  
 127+58.00' Maple - 30 1/2"  
 127+80.00' Maple - 30 1/2"  
 128+02.00' Maple - 30 1/2"  
 128+24.00' Maple - 30 1/2"  
 128+46.00' Maple - 30 1/2"  
 128+68.00' Maple - 30 1/2"  
 128+90.00' Maple - 30 1/2"  
 129+12.00' Maple - 30 1/2"  
 129+34.00' Maple - 30 1/2"  
 129+56.00' Maple - 30 1/2"  
 129+78.00' Maple - 30 1/2"  
 130+00.00' Maple - 30 1/2"

1.52-67  
 STA. 123+66.40  
 Δ = 1° 57' Lt.

124+08.18' Maple - 32 1/2"  
 124+30.00' Elm - 24 1/2"  
 124+52.00' Elm - 24 1/2"  
 124+74.00' Elm - 24 1/2"  
 124+96.00' Maple - 30 1/2"  
 125+18.00' Maple - 30 1/2"  
 125+40.00' Maple - 30 1/2"  
 125+62.00' Maple - 30 1/2"  
 125+84.00' Maple - 30 1/2"  
 126+06.00' Maple - 30 1/2"  
 126+28.00' Maple - 30 1/2"  
 126+50.00' Maple - 30 1/2"  
 126+72.00' Maple - 30 1/2"  
 126+94.00' Maple - 30 1/2"  
 127+16.00' Maple - 30 1/2"  
 127+38.00' Maple - 30 1/2"  
 127+60.00' Maple - 30 1/2"  
 127+82.00' Maple - 30 1/2"  
 128+04.00' Maple - 30 1/2"  
 128+26.00' Maple - 30 1/2"  
 128+48.00' Maple - 30 1/2"  
 128+70.00' Maple - 30 1/2"  
 128+92.00' Maple - 30 1/2"  
 129+14.00' Maple - 30 1/2"  
 129+36.00' Maple - 30 1/2"  
 129+58.00' Maple - 30 1/2"  
 129+80.00' Maple - 30 1/2"  
 130+02.00' Maple - 30 1/2"

124+37.89' 3/4" Elm - 9' Rt  
 124+59.70' 7/8" Elm - 9' Rt  
 125+00.00' Apple - 25 1/2"  
 125+22.00' Apple - 19 1/2"  
 125+44.00' Walnut - 18 1/2"  
 125+66.00' Walnut - 24 1/2"  
 125+88.00' Walnut - 24 1/2"  
 126+10.00' Apple - 24 1/2"  
 126+32.00' Apple - 24 1/2"  
 126+54.00' Apple - 24 1/2"  
 126+76.00' Apple - 24 1/2"  
 126+98.00' Apple - 24 1/2"  
 127+20.00' Apple - 24 1/2"  
 127+42.00' Apple - 24 1/2"  
 127+64.00' Apple - 24 1/2"  
 127+86.00' Apple - 24 1/2"  
 128+08.00' Apple - 24 1/2"  
 128+30.00' Apple - 24 1/2"  
 128+52.00' Apple - 24 1/2"  
 128+74.00' Apple - 24 1/2"  
 128+96.00' Apple - 24 1/2"  
 129+18.00' Apple - 24 1/2"  
 129+40.00' Apple - 24 1/2"  
 129+62.00' Apple - 24 1/2"  
 129+84.00' Apple - 24 1/2"  
 130+06.00' Apple - 24 1/2"  
 130+28.00' Apple - 24 1/2"  
 130+50.00' Apple - 24 1/2"  
 130+72.00' Apple - 24 1/2"  
 130+94.00' Apple - 24 1/2"  
 131+16.00' Apple - 24 1/2"  
 131+38.00' Apple - 24 1/2"  
 131+60.00' Apple - 24 1/2"  
 131+82.00' Apple - 24 1/2"  
 132+04.00' Apple - 24 1/2"  
 132+26.00' Apple - 24 1/2"  
 132+48.00' Apple - 24 1/2"  
 132+70.00' Apple - 24 1/2"  
 132+92.00' Apple - 24 1/2"  
 133+14.00' Apple - 24 1/2"  
 133+36.00' Apple - 24 1/2"  
 133+58.00' Apple - 24 1/2"  
 133+80.00' Apple - 24 1/2"  
 134+02.00' Apple - 24 1/2"  
 134+24.00' Apple - 24 1/2"  
 134+46.00' Apple - 24 1/2"  
 134+68.00' Apple - 24 1/2"  
 134+90.00' Apple - 24 1/2"  
 135+12.00' Apple - 24 1/2"  
 135+34.00' Apple - 24 1/2"  
 135+56.00' Apple - 24 1/2"  
 135+78.00' Apple - 24 1/2"  
 136+00.00' Apple - 24 1/2"

SEC. 26 EDEN TWP. T. 1 N. R. 15 E.

SEC. 23