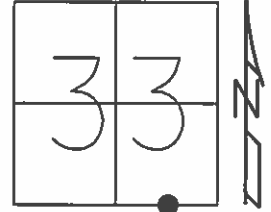


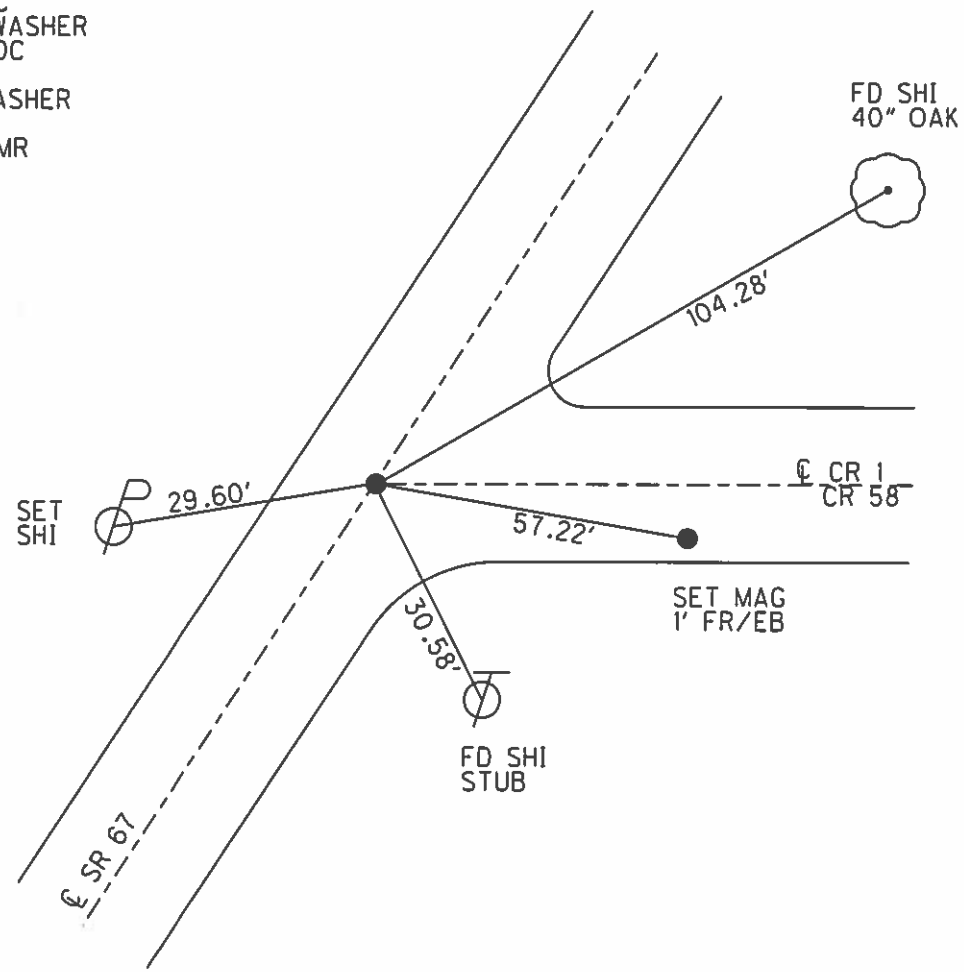
O.D.O.T. DISTRICT 2 SURVEY OFFICE (USE ONLY)

PERSONNEL \_\_\_\_\_ REFERENCE NO. 1 SHEET 1 OF 11  
 NOTES RHOADES DATE 4/3/15 ROUTE SR 67  
 H.C. LEU WEATHER FAIR COUNTY SENECA  
 R.C. RHOADES TEMP. 46° TOWNSHIP EDEN  
 \_\_\_\_\_ SECTION 33  
 \_\_\_\_\_ T 1 N R 15 E

TYPE MONUMENT P.K./WASHER  
~~ON SURFACE~~ - BELOW 0.2'  
 LEFT - ℄ PAV'T - RIGHT - \_\_\_\_\_  
10.5' TO LT EDGE PAVEMENT  
 S.L.M. 0+00  
 Grid: Northing: 483963.608 Easting: 1792863.703



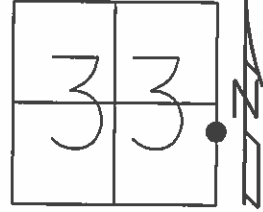
RECORD:  
 FD P.K./WASHER  
 5/3/94, DC  
 SET P.K./WASHER  
 5/26/94, DC  
 FD P.K./WASHER  
 GPS, REF1  
 2/19/14, TMR



O.D.O.T. DISTRICT 2 SURVEY OFFICE (USE ONLY)

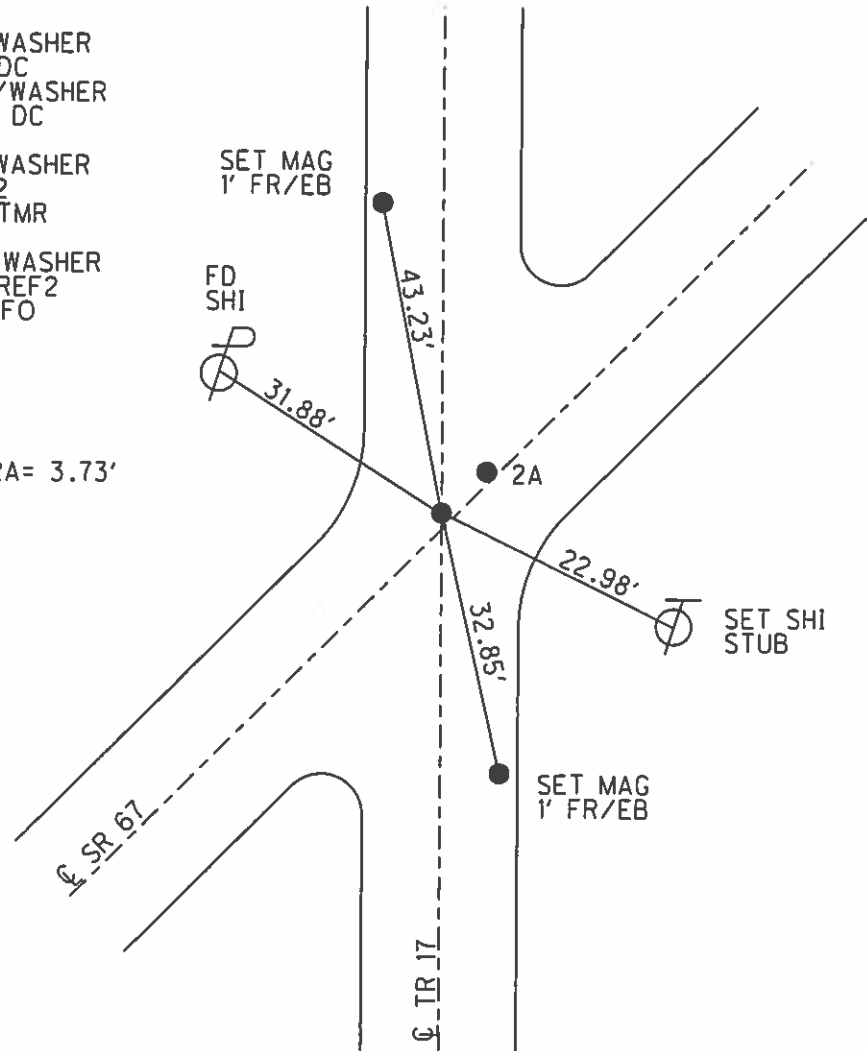
PERSONNEL \_\_\_\_\_ REFERENCE NO. 2 SHEET 2 OF 11  
 NOTES RHOADES DATE 4/3/15 ROUTE SR 67  
 H.C. LEU WEATHER FAIR COUNTY SENECA  
 R.C. RHOADES TEMP. 46° TOWNSHIP EDEN  
 \_\_\_\_\_ SECTION 33  
 \_\_\_\_\_ T 1 N R 15 E

TYPE MONUMENT P.K./WASHER  
~~ON SURFACE~~ - BELOW 3.5'  
 LEFT - ☉ PAV'T - ~~RIGHT~~ 0.4'  
 \_\_\_\_\_ TO \_\_\_\_\_ EDGE PAVEMENT  
 S.L.M. 20+09.33  
 Grid: Northing: 485589.366 Easting: 1794044.458



RECORD:  
 FD P.K./WASHER  
 5/3/94, DC  
 SET P.K./WASHER  
 5/26/94, DC  
  
 FD P.K./WASHER  
 GPS, REF2  
 2/19/14, TMR  
  
 SET MAG/WASHER  
 GPS, NEWREF2  
 7/8/15, JFO

DIST. 2-2A = 3.73'

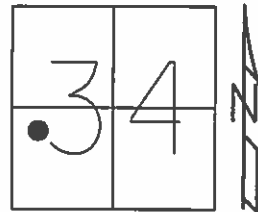




O.D.O.T. DISTRICT 2 SURVEY OFFICE (USE ONLY)

PERSONNEL \_\_\_\_\_ REFERENCE NO. 3 SHEET 4 OF 11  
 NOTES SCHNEIDER DATE 6/13/79 ROUTE SR 67  
 H.C. MOSSER WEATHER FAIR COUNTY SENECA  
 R.C. BARBOUR TEMP. 70° TOWNSHIP EDEN  
 \_\_\_\_\_ SECTION 34  
 \_\_\_\_\_ T 1 N R 15 E

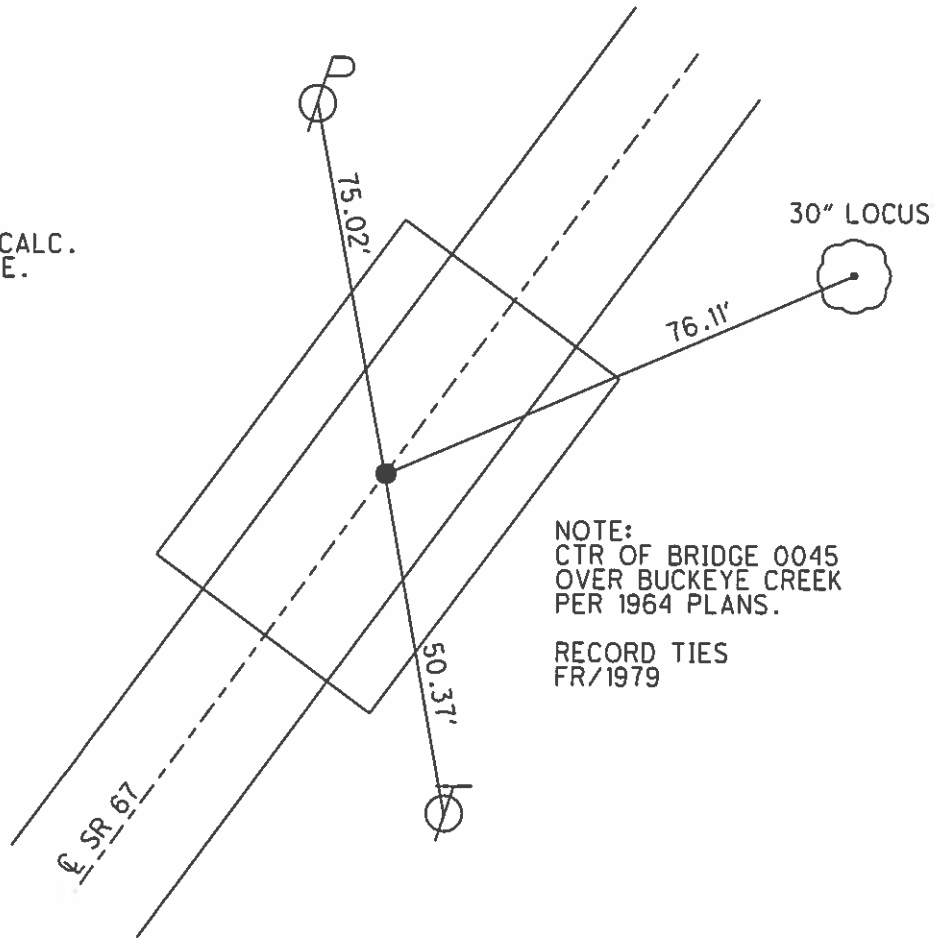
TYPE MONUMENT P.K.NAIL  
 ON SURFACE - ~~BELOW~~ \_\_\_\_\_  
~~LEFT~~ - Q PAV'T - RIGHT \_\_\_\_\_  
 \_\_\_\_\_ TO \_\_\_\_\_ EDGE PAVEMENT  
 S.L.M. 23+95.26  
 Grid: Northing: \_\_\_\_\_ Easting: \_\_\_\_\_



RECORD:  
 CONSTRUCTION P.I.  
 $\Delta = 0^\circ 34' 30''$   
 STA: 23+95.26  
 JACK CRONIN

D.N.F.  
 2/19/14, TMR

NOTE:  
 POINT AND TIES  
 DESTROYED.  
 POINT WILL BE CALC.  
 RESET IN FUTURE.  
 10/5/15, JMR



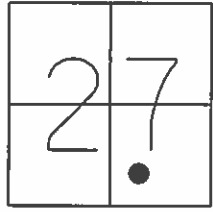
NOTE:  
 CTR OF BRIDGE 0045  
 OVER BUCKEYE CREEK  
 PER 1964 PLANS.

RECORD TIES  
 FR/1979

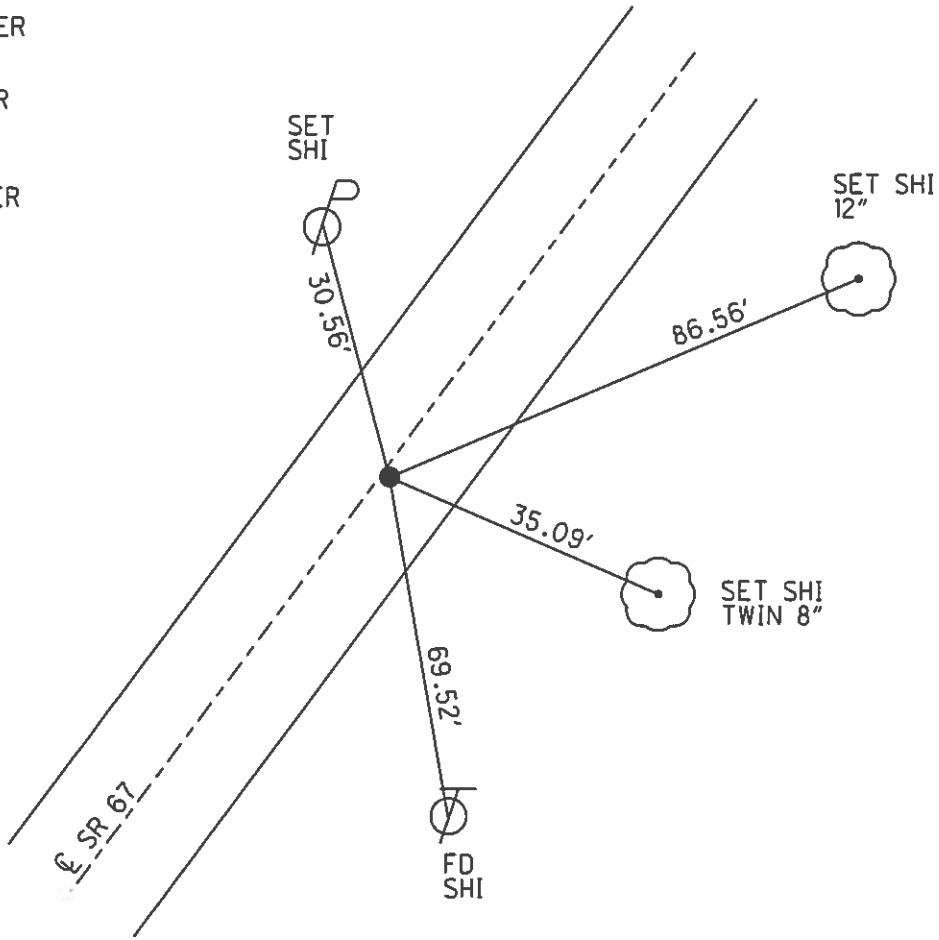
O.D.O.T. DISTRICT 2 SURVEY OFFICE (USE ONLY)

PERSONNEL \_\_\_\_\_ REFERENCE NO. 4 SHEET 5 OF 11  
 NOTES RHOADES DATE 4/3/15 ROUTE SR 67  
 H.C. LEU WEATHER FAIR COUNTY SENECA  
 R.C. RHOADES TEMP. 46° TOWNSHIP EDEN  
 \_\_\_\_\_ SECTION 27  
 \_\_\_\_\_ T 1 N R 15 E

TYPE MONUMENT P.K./WASHER  
 ON SURFACE - ~~BELOW~~ ON \_\_\_\_\_  
~~LEFT~~ - Q PAV'T - RIGHT 0.3'  
10.0' TO LT EDGE PAVEMENT  
 S.L.M. 69+84.50  
 Grid: Northing: 489595.861 Easting: 1796994.225



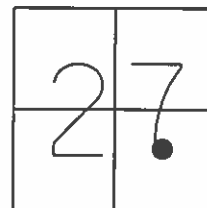
RECORD:  
 FD P.K./WASHER  
 5/3/94, DC  
 SET P.K./WASHER  
 5/26/94, DC  
  
 FD P.K./WASHER  
 GPS, REF4  
 2/19/14, TMR  
  
 SET MAG/WASHER  
 GPS, NEWREF4  
 7/8/15, JFO



O.D.O.T. DISTRICT 2 SURVEY OFFICE (USE ONLY)

PERSONNEL \_\_\_\_\_ REFERENCE NO. 5 SHEET 6 OF 11  
 NOTES RHOADES DATE 4/3/15 ROUTE SR 67  
 H.C. LEU WEATHER FAIR COUNTY SENECA  
 R.C. RHOADES TEMP. 46° TOWNSHIP EDEN  
 \_\_\_\_\_ SECTION 27  
 \_\_\_\_\_ T 1 N R 15 E

TYPE MONUMENT P.K./WASHER  
 ON SURFACE - ~~BELOW~~ ON  
~~LEFT~~ - C PAV'T - RIGHT 1.5'  
8.5' TO RT EDGE PAVEMENT  
 S.L.M. 83+15.01



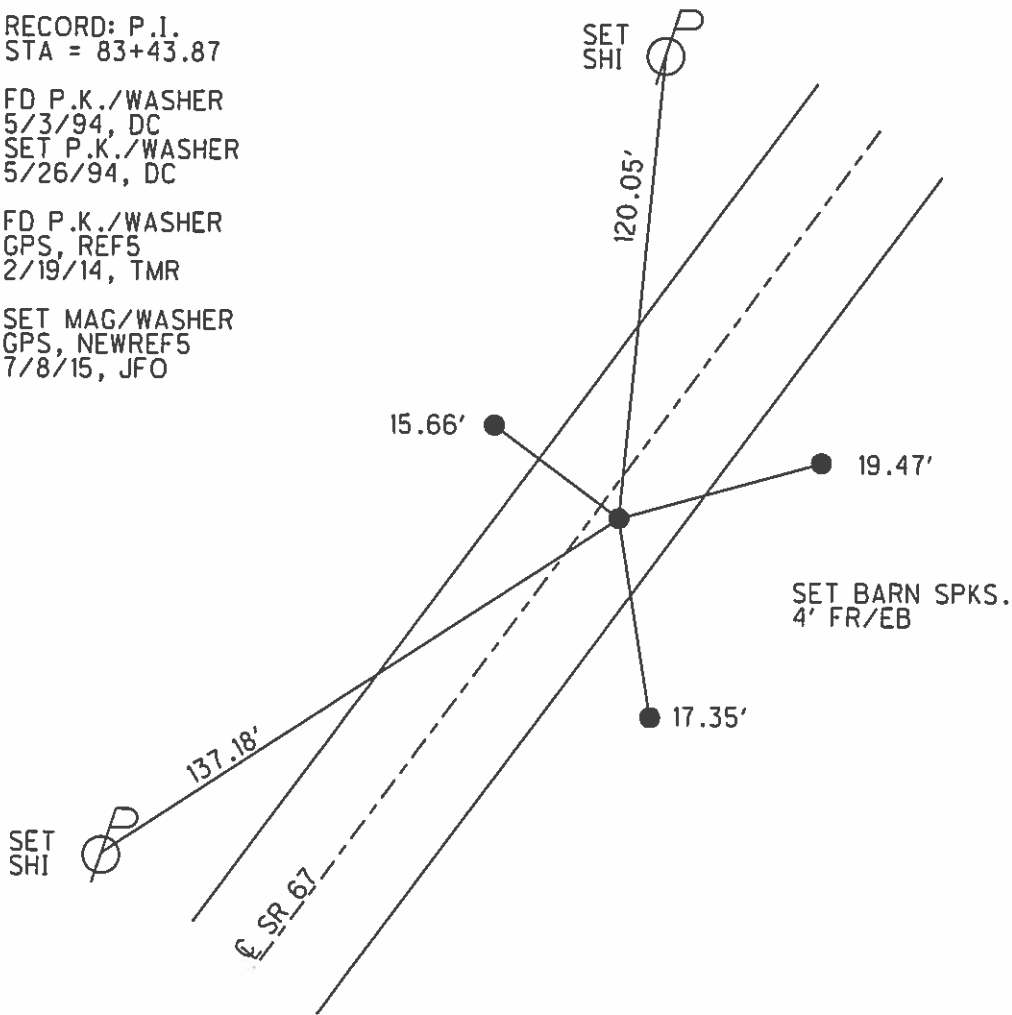
Grid: Northing: 490664.998 Easting: 1797786.100

RECORD: P.I.  
 STA = 83+43.87

FD P.K./WASHER  
 5/3/94, DC  
 SET P.K./WASHER  
 5/26/94, DC

FD P.K./WASHER  
 GPS, REFS  
 2/19/14, TMR

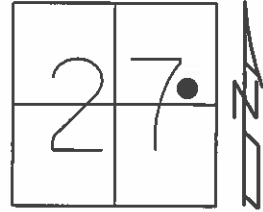
SET MAG/WASHER  
 GPS, NEWREFS  
 7/8/15, JFO



O.D.O.T. DISTRICT 2 SURVEY OFFICE (USE ONLY)

PERSONNEL \_\_\_\_\_ REFERENCE NO. 6 SHEET 7 OF 11  
 NOTES RHOADES DATE 4/3/15 ROUTE SR 67  
 H.C. O'DONNELL WEATHER CLOUDY COUNTY SENECA  
 R.C. LEU TEMP. 59° TOWNSHIP EDEN  
 \_\_\_\_\_ SECTION 27  
 \_\_\_\_\_ T 1 N R 15 E

TYPE MONUMENT P.K.SHANK  
~~ON SURFACE~~ - BELOW 1"  
 LEFT - CL PAV'T - ~~RIGHT~~ 0.5'  
9.1' TO LT EDGE PAVEMENT  
 S.L.M. 101+03.52  
 Grid: Northing: 492106.106 Easting: 1798845.284

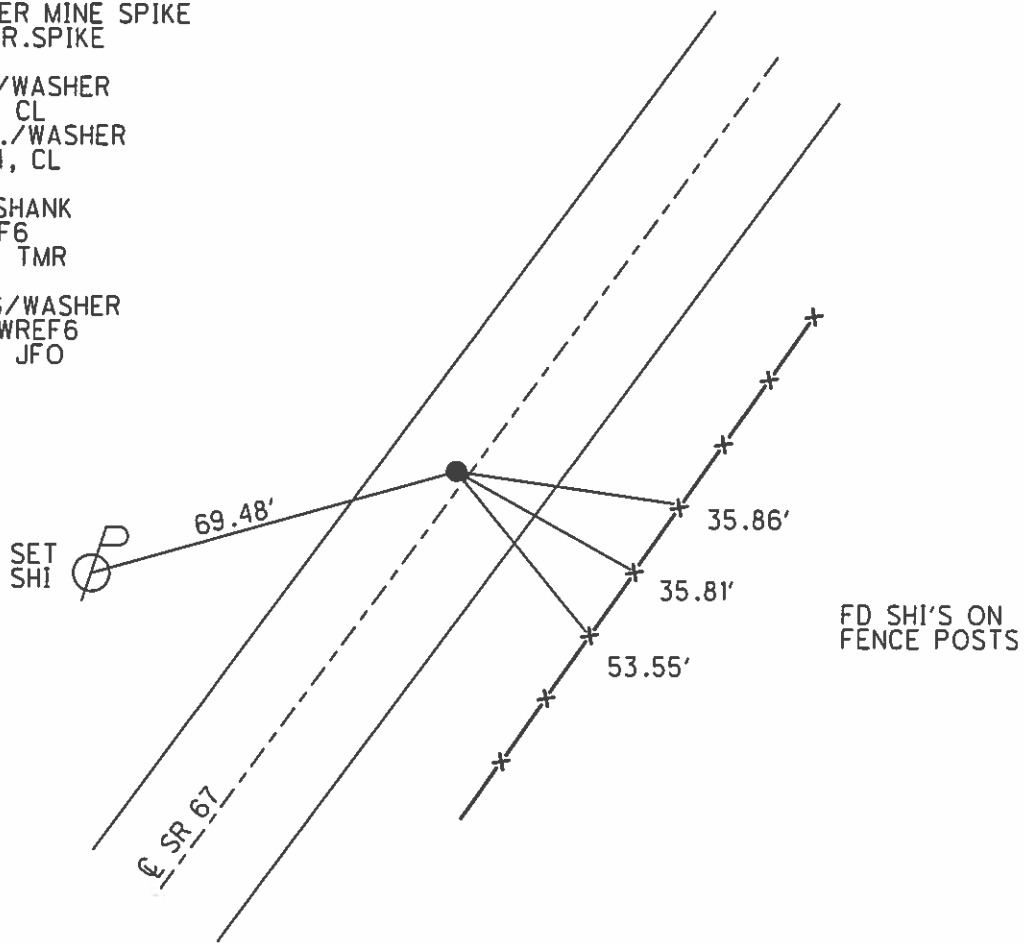


RECORD: P.I.  
 STA = 101+32.50  
 P.K. OVER MINE SPIKE  
 OVER R.R.SPIKE

FD P.K./WASHER  
 5/3/94, CL  
 SET P.K./WASHER  
 9/26/94, CL

FD P.K.SHANK  
 GPS, REF6  
 2/19/14, TMR

SET MAG/WASHER  
 GPS, NEWREF6  
 7/13/15, JFO



FD SHI'S ON  
 FENCE POSTS

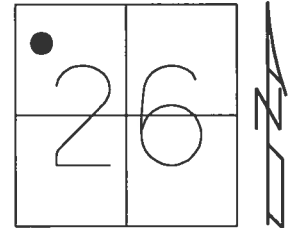




O.D.O.T. DISTRICT 2 SURVEY OFFICE (USE ONLY)

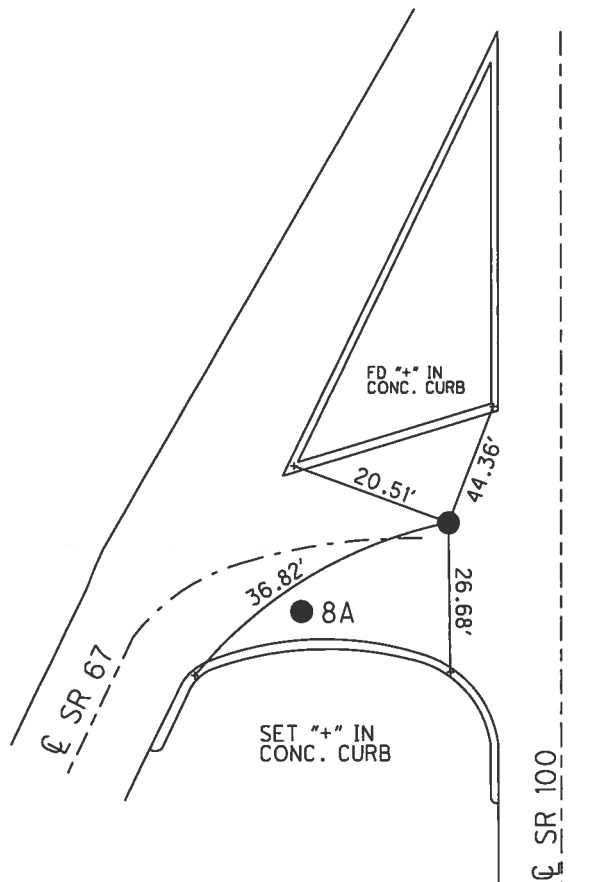
PERSONNEL \_\_\_\_\_ REFERENCE NO. 8 SHEET 9 OF 11  
 NOTES RHOADES DATE 4/3/15 ROUTE SR 67  
 H.C. O'DONNELL WEATHER CLOUDY COUNTY SENECA  
 R.C. LEU TEMP. 59° TOWNSHIP EDEN  
 \_\_\_\_\_ SECTION 26  
 \_\_\_\_\_ T 1 N R 15 E

TYPE MONUMENT P.K.SHANK  
 ON SURFACE - ~~BELOW~~ ON \_\_\_\_\_  
 LEFT - ☉ PAV'T - RIGHT - \_\_\_\_\_  
23' TO RT EDGE PAVEMENT  
 S.L.M. 122+43.79



Grid: Northing: 493779.252 Easting: 1800129.572

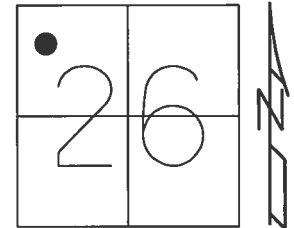
RECORD: P.I.  
 $\Delta = 26^\circ 10' \text{ LT}$   
 ☉ SURVEY  
 STA: 107+43.41  
 FD P.K./WASHER  
 5/3/94, CL  
 SET P.K./WASHER  
 9/26/94, CL  
 FD P.K.SHANK  
 GPS, REF8  
 2/19/14, TMR  
 SET MAG/WASHER  
 GPS, NEWREF8  
 7/13/15, JFO  
 FD MAG/WASHER  
 REF8  
 2/4/16, JFO



O.D.O.T. DISTRICT 2 SURVEY OFFICE (USE ONLY)

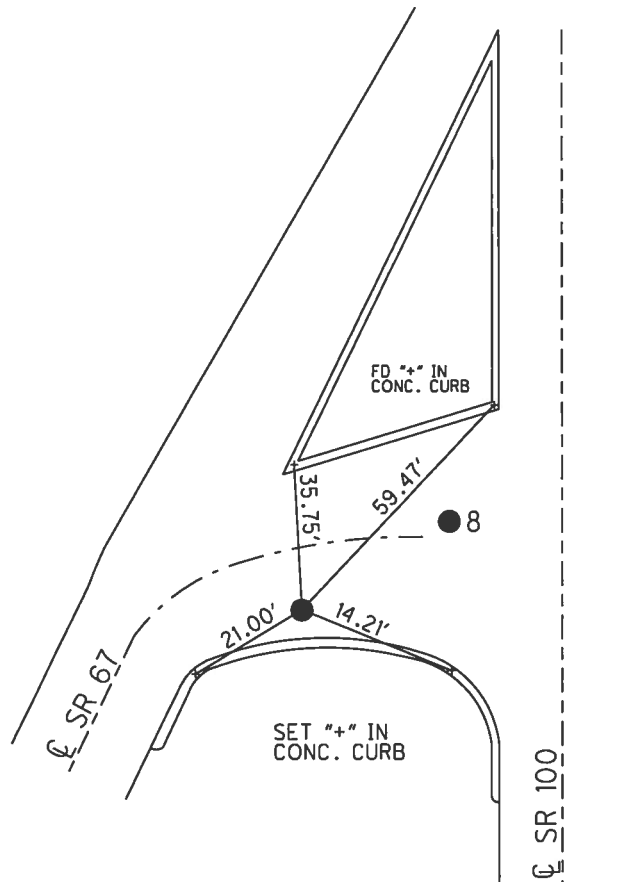
PERSONNEL \_\_\_\_\_ REFERENCE NO. 8 A SHEET 10 OF 11  
 NOTES RHOADES DATE 4/3/15 ROUTE SR 67  
 H.C. O'DONNELL WEATHER CLOUDY COUNTY SENECA  
 R.C. LEU TEMP. 59° TOWNSHIP EDEN  
 \_\_\_\_\_ SECTION 26  
 \_\_\_\_\_ T 1 N R 15 E

TYPE MONUMENT R.R.SPIKE  
~~ON SURFACE~~ - BELOW 1"  
 LEFT - ☉ PAV'T - RIGHT - \_\_\_\_\_  
8' TO RT EDGE PAVEMENT  
 S.L.M. 122+29.14



Grid: Northing: 493763.530 Easting: 1800126.305

RECORD: P.I.  
 $\Delta = 23^\circ 32' RT$   
 1951 PLANS, ☉ SURVEY  
 STA: 107+27.41  
 FD R.R.SPIKE  
 5/3/94, CL  
 SET R.R.SPIKE  
 9/26/94, CL  
 FD R.R.SPIKE  
 GPS, REFA8  
 2/19/14, TMR  
 SET MAG/WASHER  
 GPS, NEWREFA8  
 7/13/15, JFO  
 FD MAG/WASHER  
 REFA8  
 2/4/16, JFO



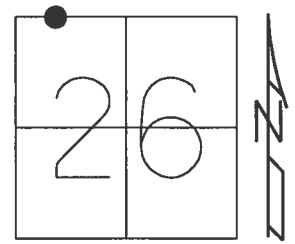
O.D.O.T. DISTRICT 2 SURVEY OFFICE (USE ONLY)

PERSONNEL \_\_\_\_\_ REFERENCE NO. 9 SHEET 11 OF 11

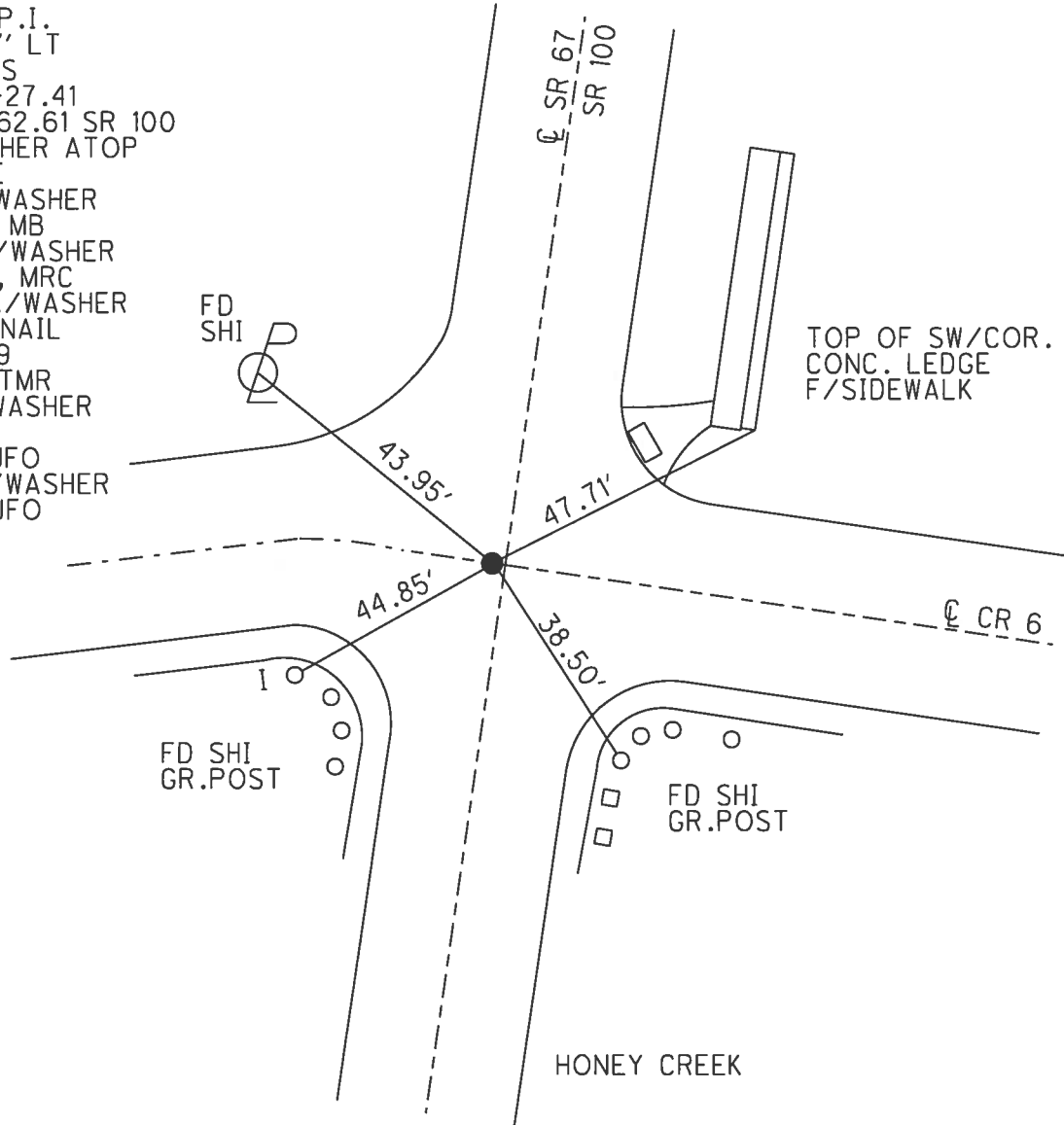
NOTES RHOADES DATE 7/12/17 ROUTE SR 67  
 H.C. O'DONNELL WEATHER CLOUDY COUNTY SENECA  
 R.C. RHOADES TEMP. 78° TOWNSHIP EDEN  
 \_\_\_\_\_ SECTION 26  
 \_\_\_\_\_ T 1 N R 15 E

TYPE MONUMENT MAG/WASHER  
 ON SURFACE - ~~BELOW~~ ON \_\_\_\_\_  
 LEFT - ☉ PAV'T - ~~RIGHT~~ 0.5', ± 5' S.OF ☉ WEST  
 \_\_\_\_\_ TO \_\_\_\_\_ EDGE PAVEMENT  
 S.L.M. 130+62.72

Grid: Northing: 494582.078 Easting: 1800291.189



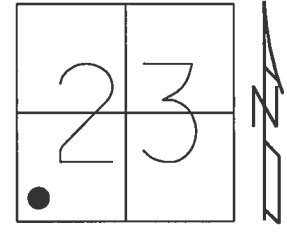
RECORD: P.I.  
 $\Delta = 01^\circ 57' \text{ LT}$   
 1951 PLANS  
 STA: 107+27.41  
 STA: 115+62.61 SR 100  
 P.K./WASHER ATOP  
 R.R.SPIKE  
 FD P.K./WASHER  
 7/21/00, MB  
 SET P.K./WASHER  
 10/17/00, MRC  
 DNF, P.K./WASHER  
 SET MAG NAIL  
 GPS, REF9  
 2/21/14, TMR  
 FD MAG/WASHER  
 REF9  
 2/4/16, JFO  
 SET MAG/WASHER  
 11/9/17, JFO



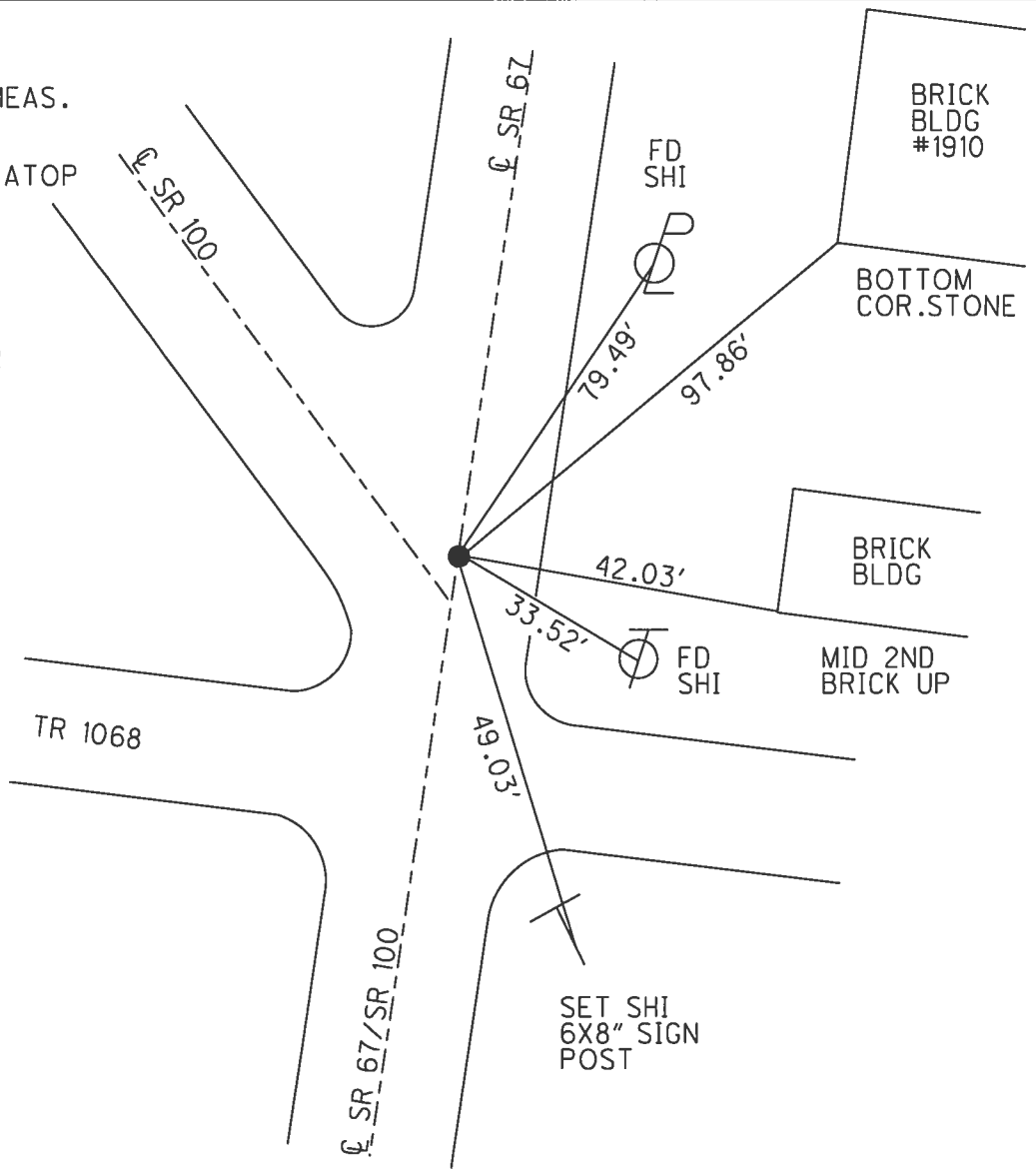
O.D.O.T. DISTRICT 2 SURVEY OFFICE (USE ONLY)

PERSONNEL \_\_\_\_\_ REFERENCE NO. 10 SHEET 1 OF 25  
 NOTES RHOADES DATE 7/12/17 ROUTE SR 67  
 H.C. O'DONNELL WEATHER CLOUDY COUNTY SENECA  
 R.C. RHOADES TEMP. 79° TOWNSHIP EDEN  
 \_\_\_\_\_ SECTION 23  
 \_\_\_\_\_ T 1 N R 15 E

TYPE MONUMENT P.K./WASHER  
~~ON SURFACE~~ - BELOW 4"  
 LEFT - ☉ PAV'T - RIGHT ON  
- TO - EDGE PAVEMENT  
 S.L.M. 134+82.37  
 Grid: Northing: 494996.062 Easting: 1800359.905



RECORD: P.I.  
 1951 PLANS  
 STA. 119+82.24 MEAS.  
 FD R.R.SPIKE  
 6" DOWN  
 SET BOLT SPIKE ATOP  
 R.R.SPIKE  
 7/11/78  
 FD P.K./WASHER  
 4" DOWN  
 REF10  
 2/4/16, JFO  
 SET MAG/WASHER  
 11/9/17, JFO



O.D.O.T. DISTRICT 2 SURVEY OFFICE (USE ONLY)

PERSONNEL \_\_\_\_\_ REFERENCE NO. 11 AB SHEET 2 OF 25

NOTES RHOADES DATE 7/12/17 ROUTE SR 67  
 H.C. O'DONNELL WEATHER CLOUDY COUNTY SENECA  
 R.C. RHOADES TEMP. 82° TOWNSHIP EDEN  
 \_\_\_\_\_ SECTION 23  
 \_\_\_\_\_ T 1 N R 15 E

TYPE MONUMENT MAG NAIL SHANK

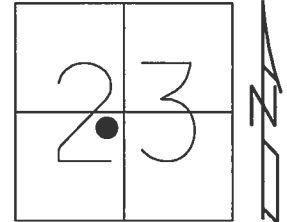
ON SURFACE - ~~BELOW~~ ON \_\_\_\_\_

LEFT - ☉ PAV'T - ~~RIGHT~~ 1.5'

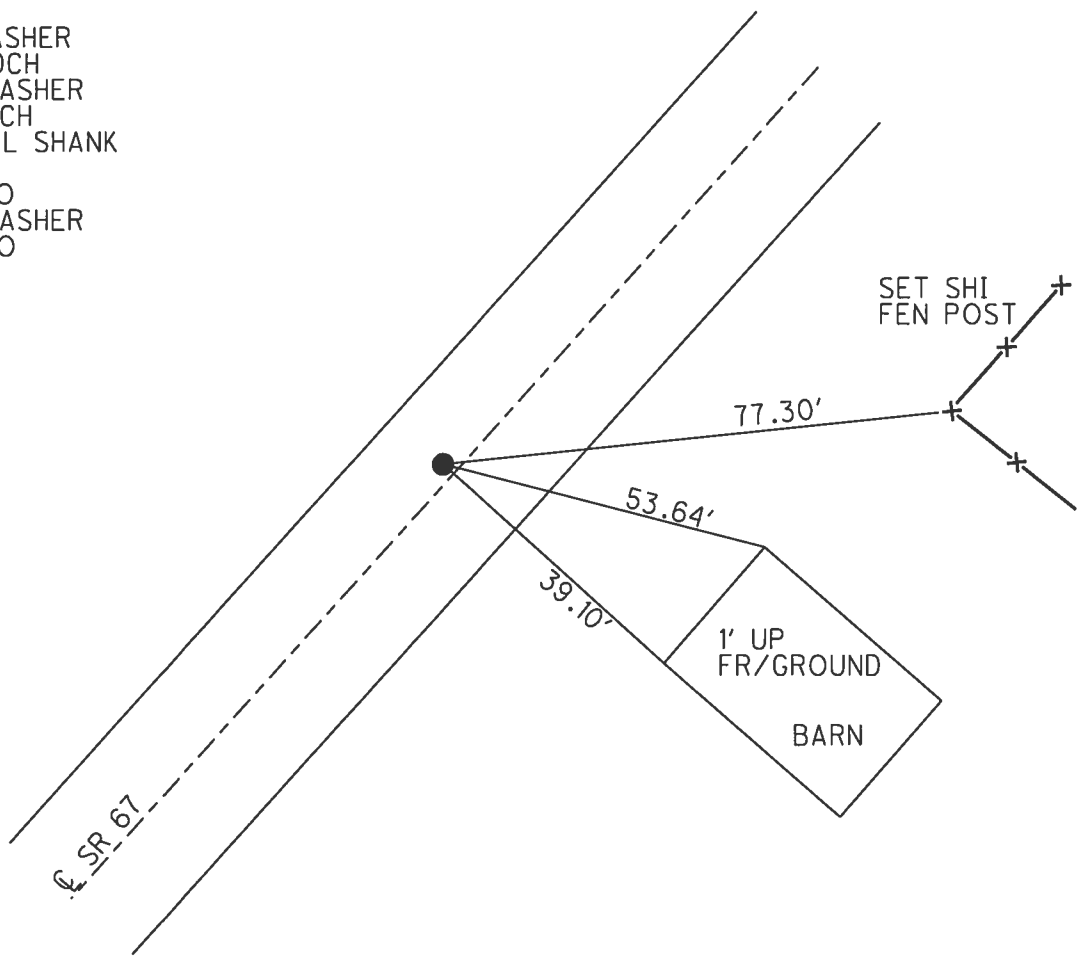
- TO - EDGE PAVEMENT

S.L.M. 158+36.72

Grid: Northing: 496940.197 Easting: 1801521.622



RECORD: P.I.  
 STA. 158+37.70  
 FD P.K./WASHER ATOP  
 P.K./WASHER ATOP  
 R.R. SPIKE  
 FD P.K./WASHER  
 5/29/02, DCH  
 SET MAG/WASHER  
 9/14/02, DCH  
 FD MAG NAIL SHANK  
 REFAB11  
 2/4/16, JFO  
 SET MAG/WASHER  
 11/9/17, JFO

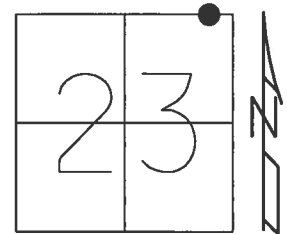


O.D.O.T. DISTRICT 2 SURVEY OFFICE (USE ONLY)

PERSONNEL \_\_\_\_\_ REFERENCE NO. 11 A SHEET 3 OF 25

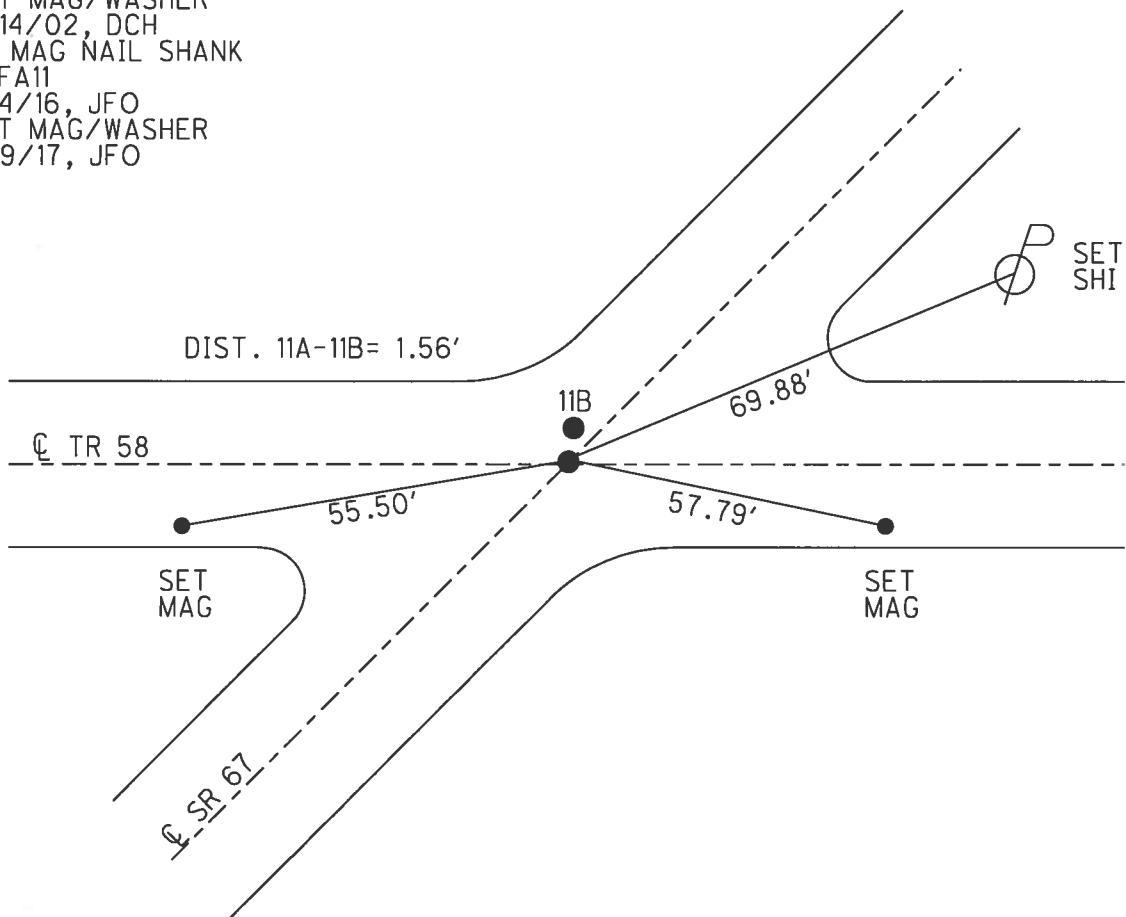
NOTES RHOADES DATE 7/12/17 ROUTE SR 67  
 H.C. O'DONNELL WEATHER CLOUDY COUNTY SENECA  
 R.C. RHOADES TEMP. 83° TOWNSHIP EDEN  
 \_\_\_\_\_ SECTION 23  
 \_\_\_\_\_ T 1 N R 15 E

TYPE MONUMENT MAG NAIL SHANK  
 ON SURFACE - ~~BELOW~~ ON  
 LEFT - ☉ PAV'T - RIGHT ON  
\_\_\_\_\_ TO \_\_\_\_\_ EDGE PAVEMENT  
 S.L.M. 197+89.98



Grid: Northing: 499827.474 Easting: 1804221.982

RECORD:  
 STA. 198+42  
 FD P.K.NAIL  
 5/29/02, DCH  
 SET MAG/WASHER  
 9/14/02, DCH  
 FD MAG NAIL SHANK  
 REFA11  
 2/4/16, JFO  
 SET MAG/WASHER  
 11/9/17, JFO

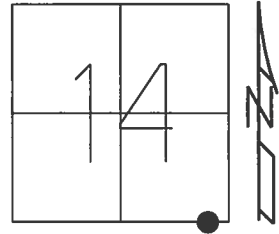


O.D.O.T. DISTRICT 2 SURVEY OFFICE (USE ONLY)

PERSONNEL \_\_\_\_\_ REFERENCE NO. 11 B SHEET 4 OF 25

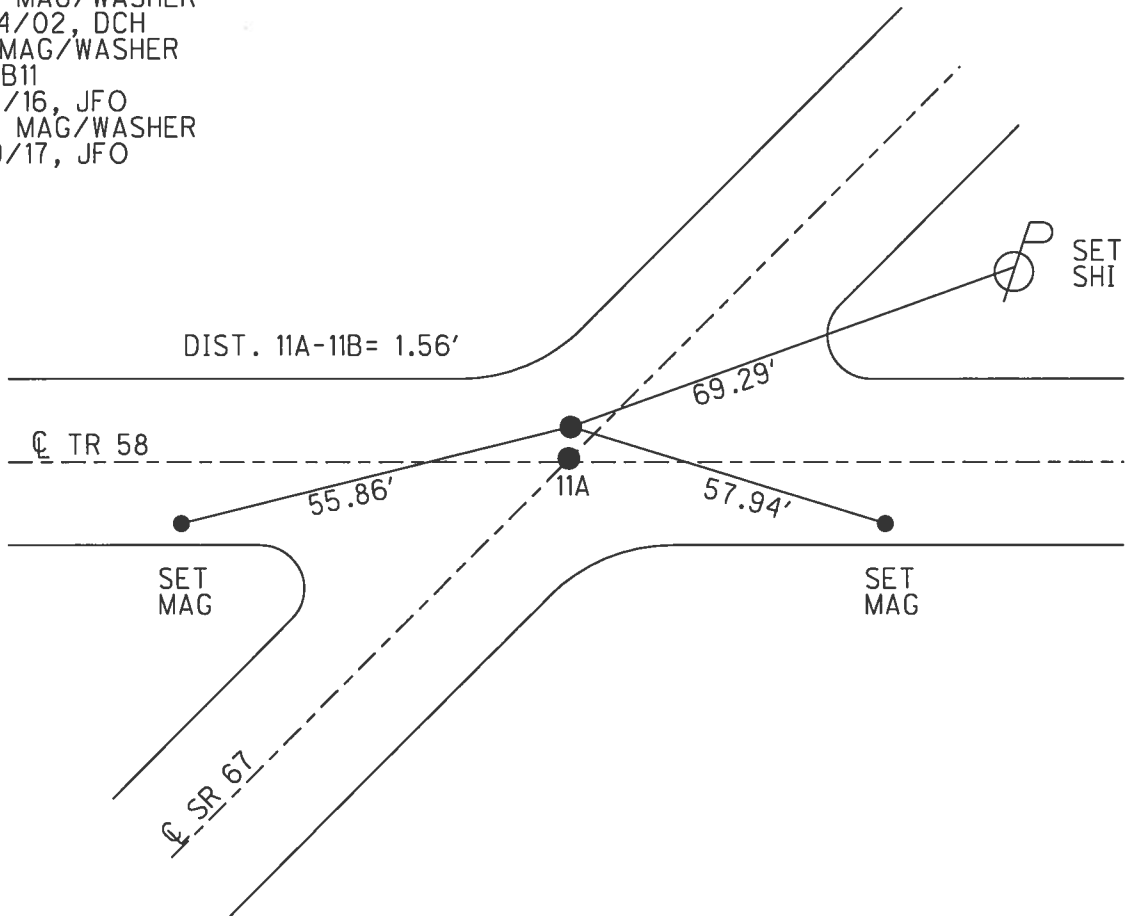
NOTES RHOADES DATE 7/12/17 ROUTE SR 67  
 H.C. O'DONNELL WEATHER CLOUDY COUNTY SENECA  
 R.C. RHOADES TEMP. 83° TOWNSHIP EDEN  
 \_\_\_\_\_ SECTION 14  
 \_\_\_\_\_ T 1 N R 15 E

TYPE MONUMENT MAG/WASHER  
 ON SURFACE - ~~BELOW~~ ON \_\_\_\_\_  
 LEFT - ☉ PAV'T - ~~RIGHT~~ 1'  
 - TO - EDGE PAVEMENT  
 S.L.M. 197+91



Grid: Northing: 499829.033 Easting: 1804222.059

RECORD:  
 STA. 198+43  
 FD MAG NAIL  
 5/29/02, DCH  
 SET MAG/WASHER  
 9/14/02, DCH  
 FD MAG/WASHER  
 REFB11  
 2/4/16, JFO  
 SET MAG/WASHER  
 11/9/17, JFO



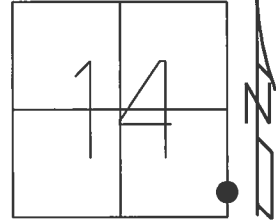
O.D.O.T. DISTRICT 2 SURVEY OFFICE (USE ONLY)

PERSONNEL \_\_\_\_\_ REFERENCE NO. 12 SHEET 5 OF 25

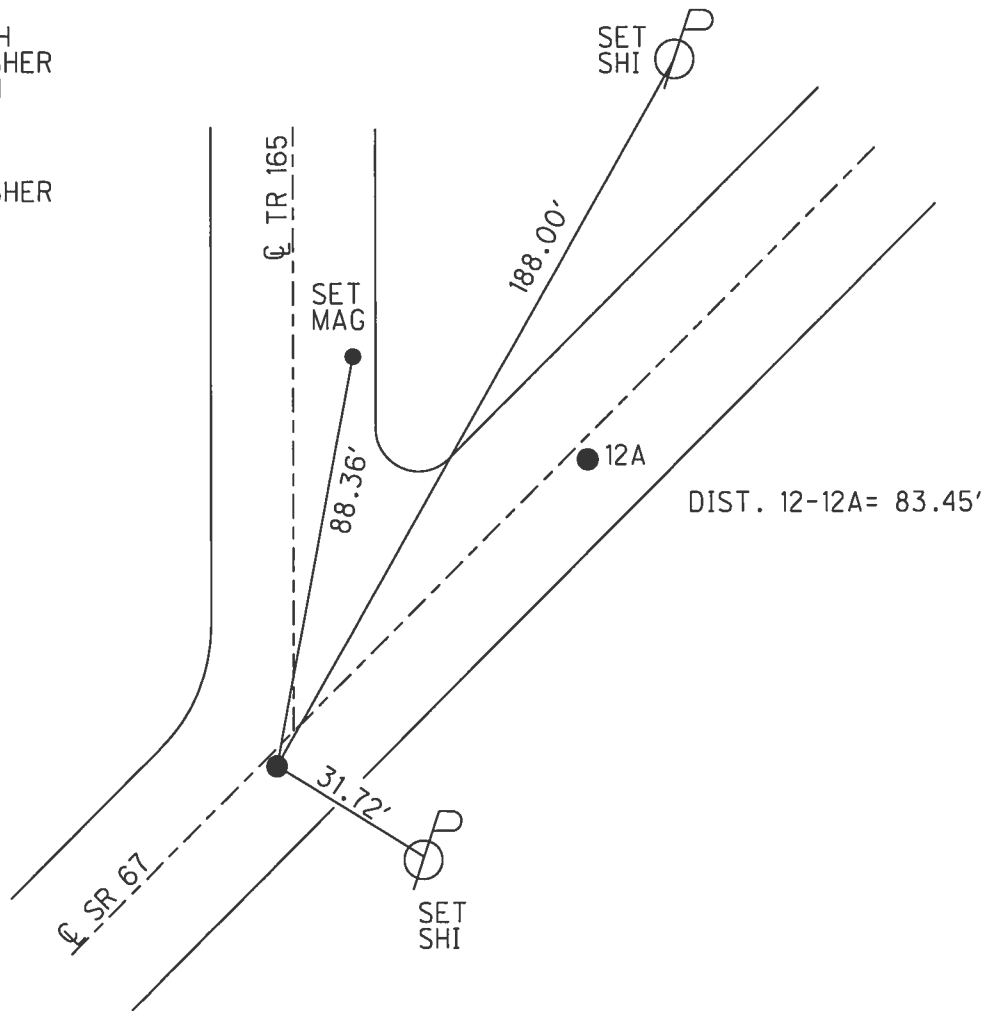
NOTES RHOADES DATE 7/12/17 ROUTE SR 67  
 H.C. O'DONNELL WEATHER CLOUDY COUNTY SENECA  
 R.C. RHOADES TEMP. 83° TOWNSHIP EDEN  
 SECTION 14  
 T 1 N R 15 E

TYPE MONUMENT MAG NAIL  
 ON SURFACE - ~~BELOW~~ ON \_\_\_\_\_  
~~LEFT~~ - CL PAV'T - RIGHT 1'  
 - TO - EDGE PAVEMENT  
 S.L.M. 204+48.71

Grid: Northing: 500309.362 Easting: 1804671.179



RECORD:  
 STA. 205+02  
 FD MAG NAIL  
 5/30/02, DCH  
 SET MAG/WASHER  
 9/14/02, DCH  
 FD MAG NAIL  
 REF12  
 2/4/16, JFO  
 SET MAG/WASHER  
 11/9/17, JFO





O.D.O.T. DISTRICT 2 SURVEY OFFICE (USE ONLY)

PERSONNEL \_\_\_\_\_ REFERENCE NO. 12 A SHEET 6 OF 25

NOTES RHOADES DATE 7/12/17 ROUTE SR 67  
 H.C. O'DONNELL WEATHER CLOUDY COUNTY SENECA  
 R.C. RHOADES TEMP. 83° TOWNSHIP EDEN  
 \_\_\_\_\_ SECTION 13  
 \_\_\_\_\_ T 1 N R 15 E

TYPE MONUMENT MAG NAIL SHANK

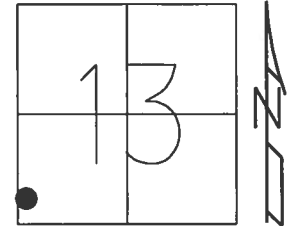
ON SURFACE - ~~BELOW~~ ON \_\_\_\_\_

~~LEFT~~ - CL PAV'T - RIGHT 6'

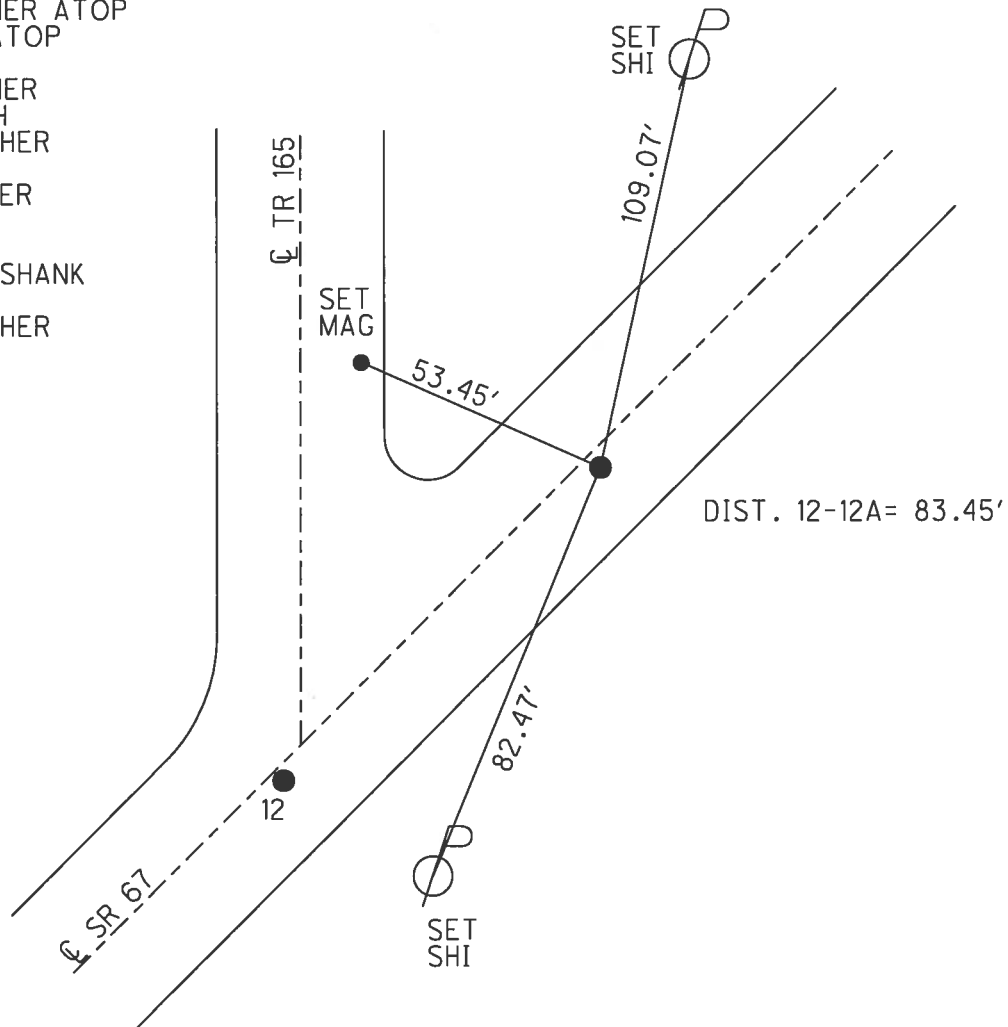
\_\_\_\_\_ TO \_\_\_\_\_ EDGE PAVEMENT

S.L.M. 205+32.16

Grid: Northing: 500370.253 Easting: 1804728.160



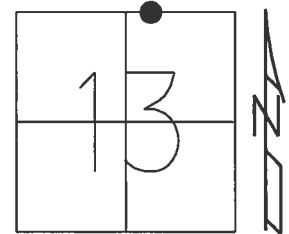
RECORD: P.I.  
 STA. 205+85  
 FD P.K./WASHER ATOP  
 BOAT SPIKE ATOP  
 R.R.SPIKE  
 FD P.K./WASHER  
 5/30/02, DCH  
 SET MAG/WASHER  
 9/14/02, DCH  
 FD MAG/WASHER  
 REFA12  
 2/4/16, JFO  
 FD MAG NAIL SHANK  
 7/12/17, JFO  
 SET MAG/WASHER  
 11/9/17, JFO



O.D.O.T. DISTRICT 2 SURVEY OFFICE (USE ONLY)

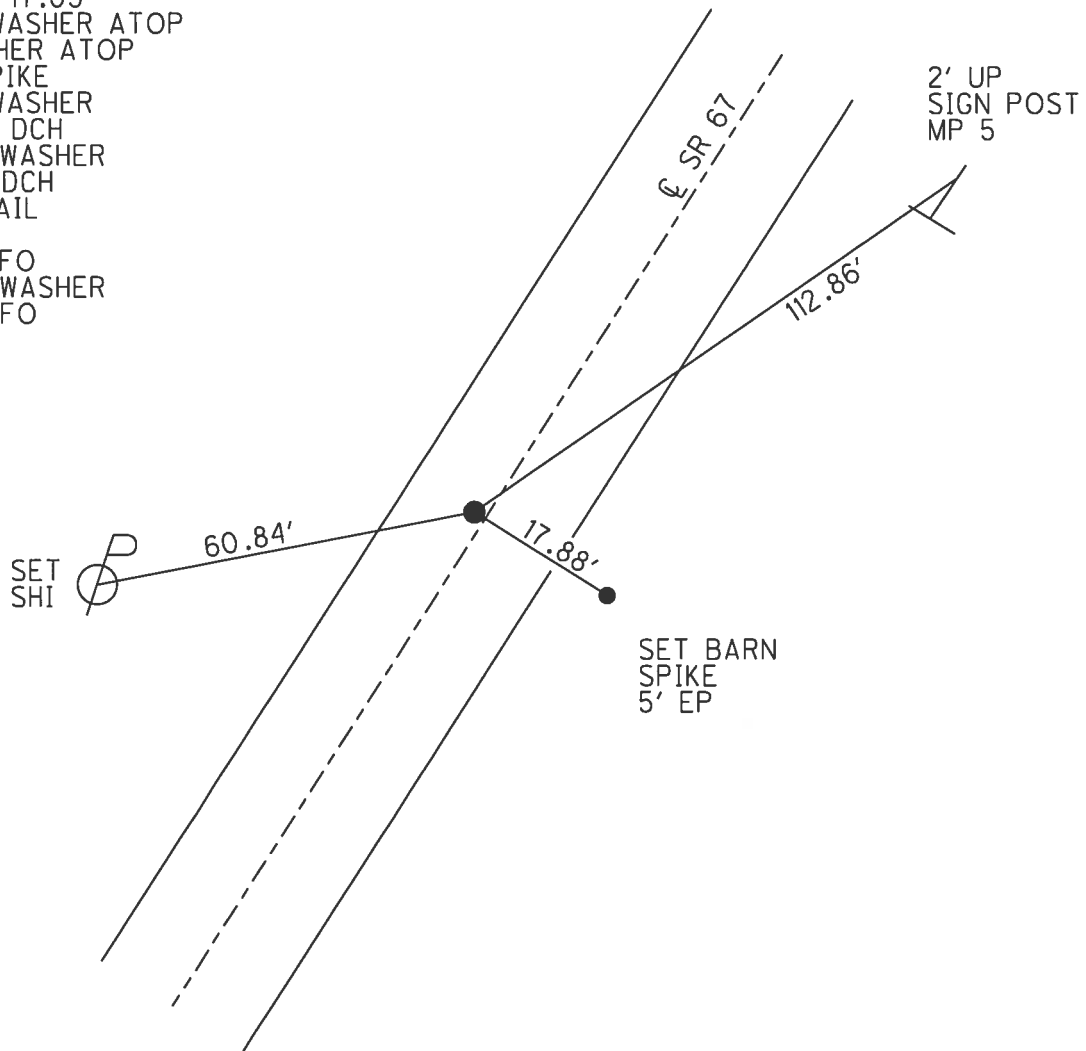
PERSONNEL \_\_\_\_\_ REFERENCE NO. 15 SHEET 7 OF 25  
 NOTES RHOADES DATE 7/13/17 ROUTE SR 67  
 H.C. O'DONNELL WEATHER CLOUDY COUNTY SENECA  
 R.C. RHOADES TEMP. 74° TOWNSHIP EDEN  
 \_\_\_\_\_ SECTION 13  
 \_\_\_\_\_ T 1 N R 15 E

TYPE MONUMENT MAG NAIL  
 ON SURFACE - ~~BELOW~~ ON \_\_\_\_\_  
 LEFT - ☉ PAV'T - ~~RIGHT~~ 1.5'  
 - TO - EDGE PAVEMENT  
 S.L.M. 263+15.61



Grid: Northing: 505135.856 Easting: 1808004.954

RECORD: P.I.  
 STA. 263+17.05  
 FD P.K./WASHER ATOP  
 P.K./WASHER ATOP  
 SM.R.R.SPIKE  
 FD P.K./WASHER  
 5/30/02, DCH  
 SET MAG/WASHER  
 9/14/02, DCH  
 FD MAG NAIL  
 REF15  
 2/4/16, JFO  
 SET MAG/WASHER  
 11/9/17, JFO



O.D.O.T. DISTRICT 2 SURVEY OFFICE (USE ONLY)

PERSONNEL \_\_\_\_\_ REFERENCE NO. 16 SHEET 8 OF 25

NOTES RHOADES DATE 7/13/17 ROUTE SR 67  
 H.C. O'DONNELL WEATHER CLOUDY COUNTY SENECA  
 R.C. RHOADES TEMP. 74° TOWNSHIP EDEN  
 \_\_\_\_\_ SECTION 7  
 \_\_\_\_\_ T 1 N R 16 E

TYPE MONUMENT MAG NAIL SHANK

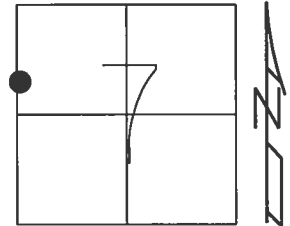
ON SURFACE - ~~BELOW~~ ON \_\_\_\_\_

~~LEFT~~ - CL PAV'T - RIGHT 1.5'

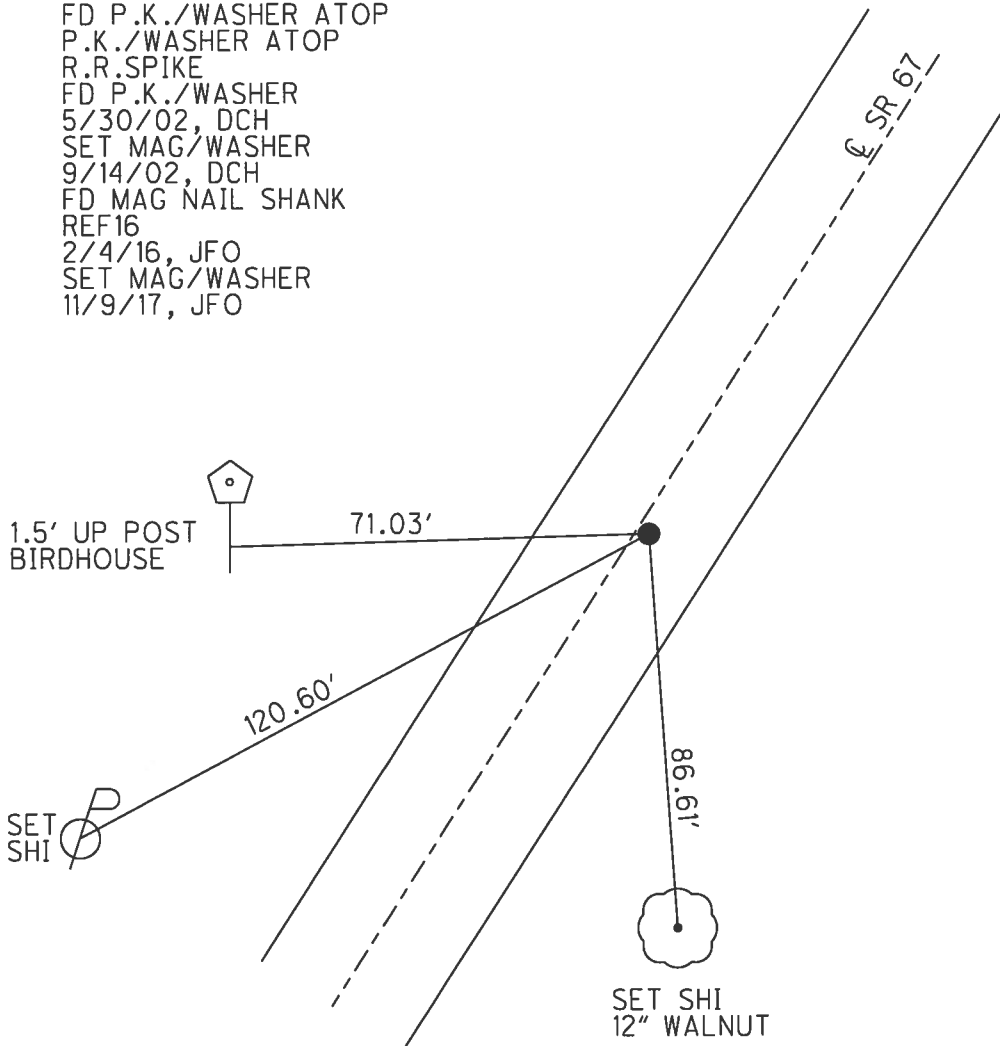
\_\_\_\_\_ TO \_\_\_\_\_ EDGE PAVEMENT

S.L.M. 303+55.34

Grid: Northing: 508454.921 Easting: 1810307.820



RECORD:  
 STA. 303+56.50  
 FD P.K./WASHER ATOP  
 P.K./WASHER ATOP  
 R.R.SPIKE  
 FD P.K./WASHER  
 5/30/02, DCH  
 SET MAG/WASHER  
 9/14/02, DCH  
 FD MAG NAIL SHANK  
 REF16  
 2/4/16, JFO  
 SET MAG/WASHER  
 11/9/17, JFO

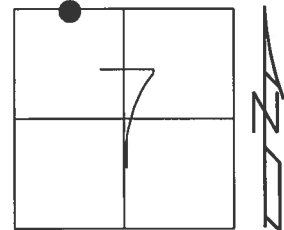


O.D.O.T. DISTRICT 2 SURVEY OFFICE (USE ONLY)

PERSONNEL \_\_\_\_\_ REFERENCE NO. 17 SHEET 9 OF 25

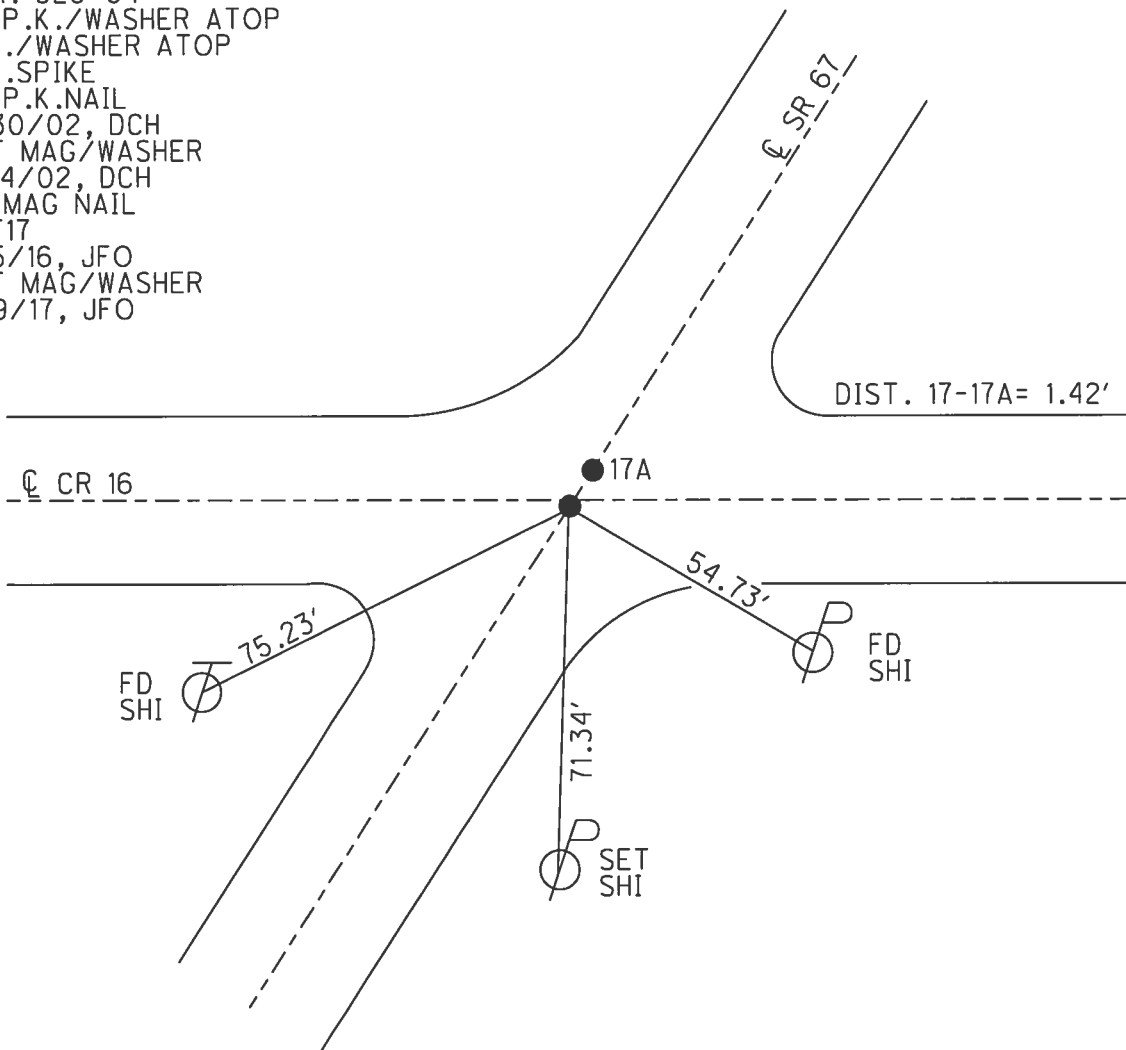
NOTES RHOADES DATE 7/13/17 ROUTE SR 67  
 H.C. O'DONNELL WEATHER CLOUDY COUNTY SENECA  
 R.C. RHOADES TEMP. 74° TOWNSHIP BLOOM  
 \_\_\_\_\_ SECTION 7  
 \_\_\_\_\_ T 1 N R 16 E

TYPE MONUMENT MAG NAIL  
 ON SURFACE - ~~BELOW~~ ON  
 LEFT - ☉ PAV'T - RIGHT ON  
 \_\_\_\_\_ TO \_\_\_\_\_ EDGE PAVEMENT  
 S.L.M. 328+78.86



Grid: Northing: 510527.977 Easting: 1811746.778

RECORD:  
 STA. 329+54  
 FD P.K./WASHER ATOP  
 P.K./WASHER ATOP  
 R.R.SPIKE  
 FD P.K.NAIL  
 5/30/02, DCH  
 SET MAG/WASHER  
 9/14/02, DCH  
 FD MAG NAIL  
 REF17  
 2/5/16, JFO  
 SET MAG/WASHER  
 11/9/17, JFO



O.D.O.T. DISTRICT 2 SURVEY OFFICE (USE ONLY)

PERSONNEL

REFERENCE NO. 17 A

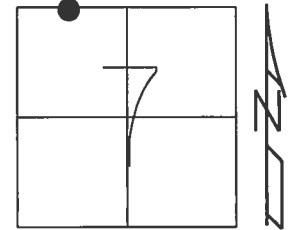
SHEET 10 OF 25

NOTES RHOADES  
 H.C. O'DONNELL  
 R.C. RHOADES

DATE 7/13/17  
 WEATHER CLOUDY  
 TEMP. 74°

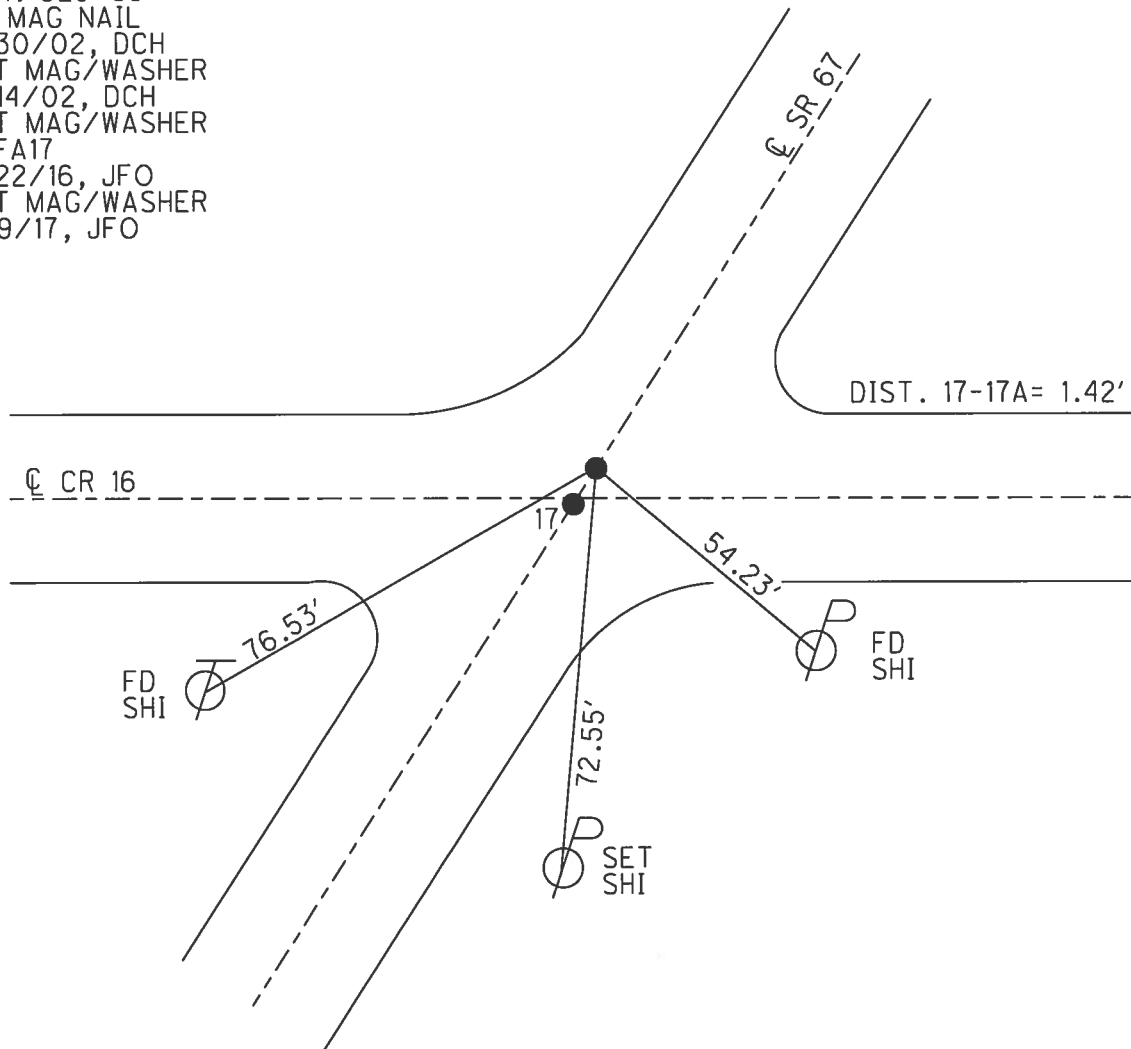
ROUTE SR 67  
 COUNTY SENECA  
 TOWNSHIP BLOOM  
 SECTION 7  
 T 1 N R 16 E

TYPE MONUMENT MAG/WASHER  
 ON SURFACE - ~~BELOW~~ ON  
 LEFT - ☉ PAV'T - RIGHT ON  
- TO - EDGE PAVEMENT  
 S.L.M. 328+80.28



Grid: Northing: 510529.016 Easting: 1811747.749

RECORD:  
 STA. 329+55  
 FD MAG NAIL  
 5/30/02, DCH  
 SET MAG/WASHER  
 9/14/02, DCH  
 SET MAG/WASHER  
 REFA17  
 2/22/16, JFO  
 SET MAG/WASHER  
 11/9/17, JFO



O.D.O.T. DISTRICT 2 SURVEY OFFICE (USE ONLY)

PERSONNEL \_\_\_\_\_ REFERENCE NO. 17 B SHEET 11 OF 25

NOTES ROUSOS DATE 5/30/02 ROUTE SR 67  
 H.C. HOMAN WEATHER CLOUDY COUNTY SENECA  
 R.C. MICHALAK TEMP. 68° TOWNSHIP BLOOM  
 \_\_\_\_\_ SECTION 6  
 \_\_\_\_\_ T 1 N R 16 E

TYPE MONUMENT MONBOX W/ 1" IPIN

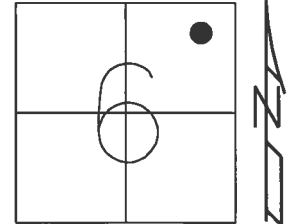
ON SURFACE - ~~BELOW~~ ON

LEFT - ☉ PAV'T - RIGHT ON

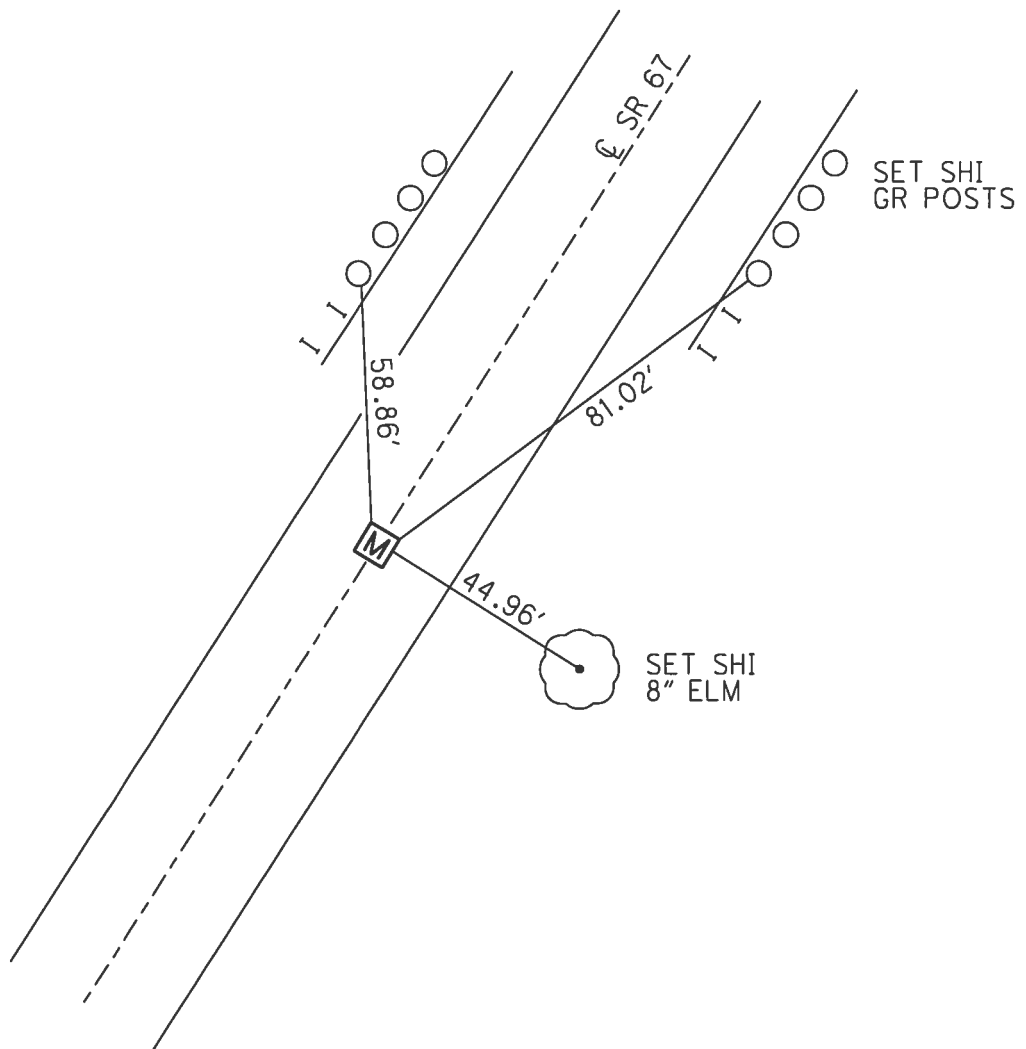
- TO - EDGE PAVEMENT

S.L.M. 375+93.54

Grid: Northing: 514414.654 Easting: 1814415.470



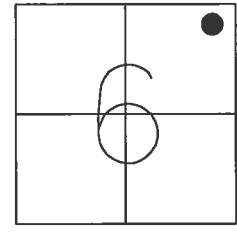
RECORD:  
 STA. 376+72  
 FD MONBOX  
 W/ 1" IPIN  
 5/30/02, DCH  
 FD MONBOX  
 W/ 1" IPIN  
 REFB17  
 2/5/16, JFO



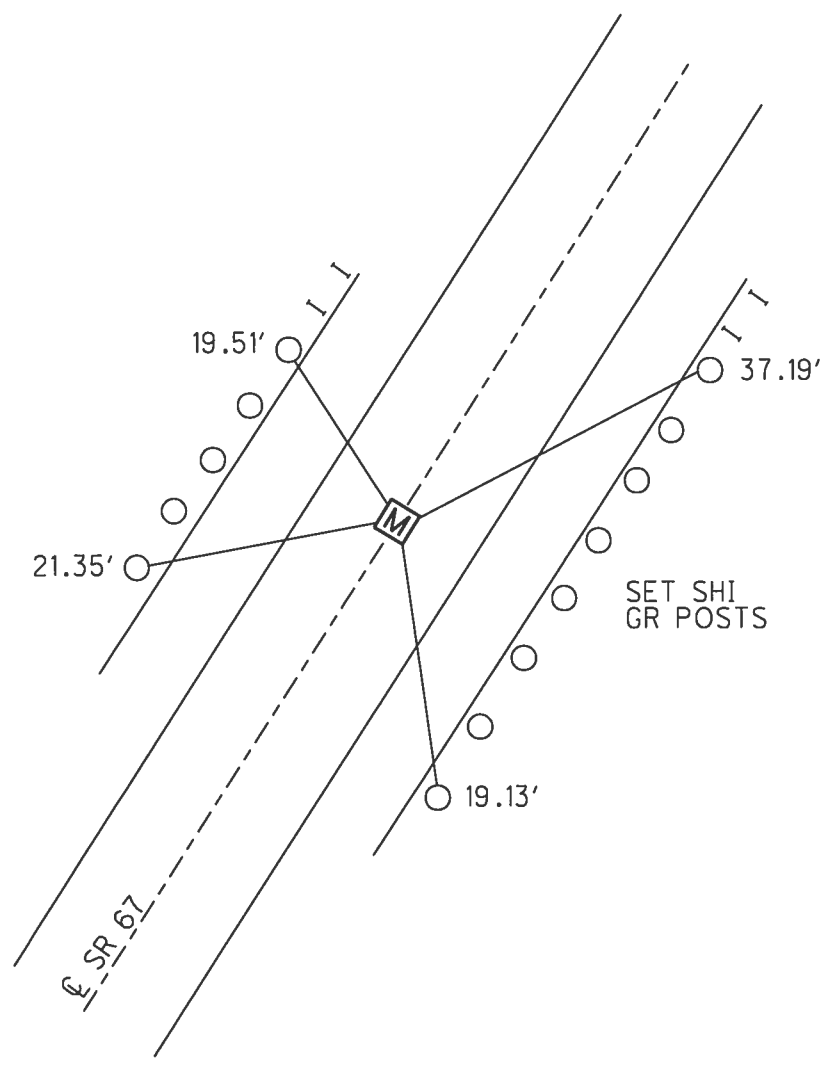
O.D.O.T. DISTRICT 2 SURVEY OFFICE (USE ONLY)

PERSONNEL \_\_\_\_\_ REFERENCE NO. 18 SHEET 12 OF 25  
 NOTES ROUSOS DATE 5/30/02 ROUTE SR 67  
 H.C. HOMAN WEATHER CLOUDY COUNTY SENECA  
 R.C. MICHALAK TEMP. 68° TOWNSHIP BLOOM  
 \_\_\_\_\_ SECTION 6  
 \_\_\_\_\_ T 1 N R 16 E

TYPE MONUMENT MONBOX  
 ON SURFACE - ~~BELOW~~ ON \_\_\_\_\_  
 LEFT - ☉ PAV'T - RIGHT ON  
 \_\_\_\_\_ TO \_\_\_\_\_ EDGE PAVEMENT  
 S.L.M. 378+89.23  
 Grid: Northing: 514658.217 Easting: 1814583.130



RECORD:  
 STA. 379+67  
 FD MONBOX  
 MEAS. TO CTR BOX  
 5/30/02, DCH  
 FD MONBOX  
 W/ 1" IPIN  
 REF18  
 2/5/16, JFO

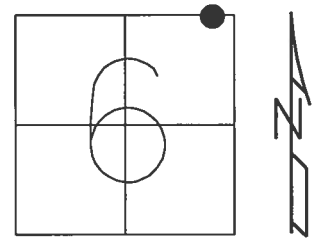


O.D.O.T. DISTRICT 2 SURVEY OFFICE

PERSONNEL \_\_\_\_\_ REFERENCE NO. 19 SHEET 13 OF 25

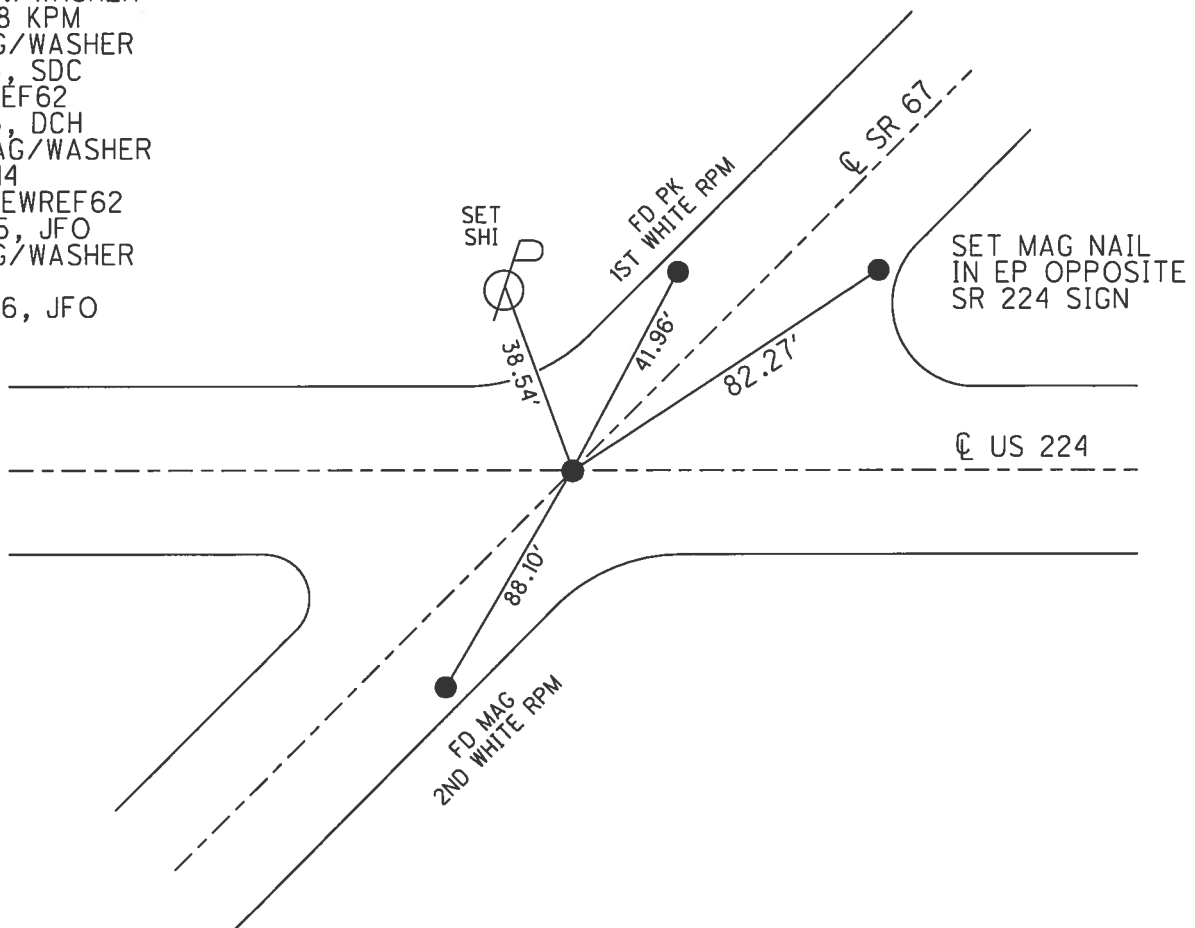
NOTES HOMAN DATE 9/8/14 ROUTE SR 67  
 H.C. LEU WEATHER FAIR COUNTY SENECA  
 R.C. HOMAN TEMP. 75° TOWNSHIP BLOOM  
 SECTION 6  
 T 1 N R 16 E

TYPE MONUMENT MAG/WASHER  
 ON SURFACE - ~~BELOW~~ ON  
 LEFT - ☉ PAV'T - RIGHT ON  
 - TO - EDGE PAVEMENT  
 S.L.M. 391+81.22



GRID: NORTHING: 515722.022 EASTING: 1815316.312

RECORD:  
 SET P.K./WASHER  
 10/12/94 MRC  
 FD P.K./WASHER  
 1/12/08 KPM  
 FD MAG/WASHER  
 1/15/13, SDC  
 GPS, REF62  
 1/16/13, DCH  
 SET MAG/WASHER  
 12/15/14  
 GPS, NEWREF62  
 7/13/15, JFO  
 FD MAG/WASHER  
 REF19  
 2/22/16, JFO



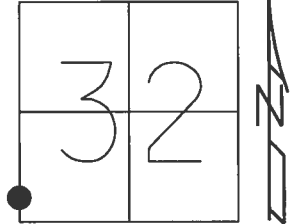


O.D.O.T. DISTRICT 2 SURVEY OFFICE (USE ONLY)

PERSONNEL \_\_\_\_\_ REFERENCE NO. 20 SHEET 14 OF 25

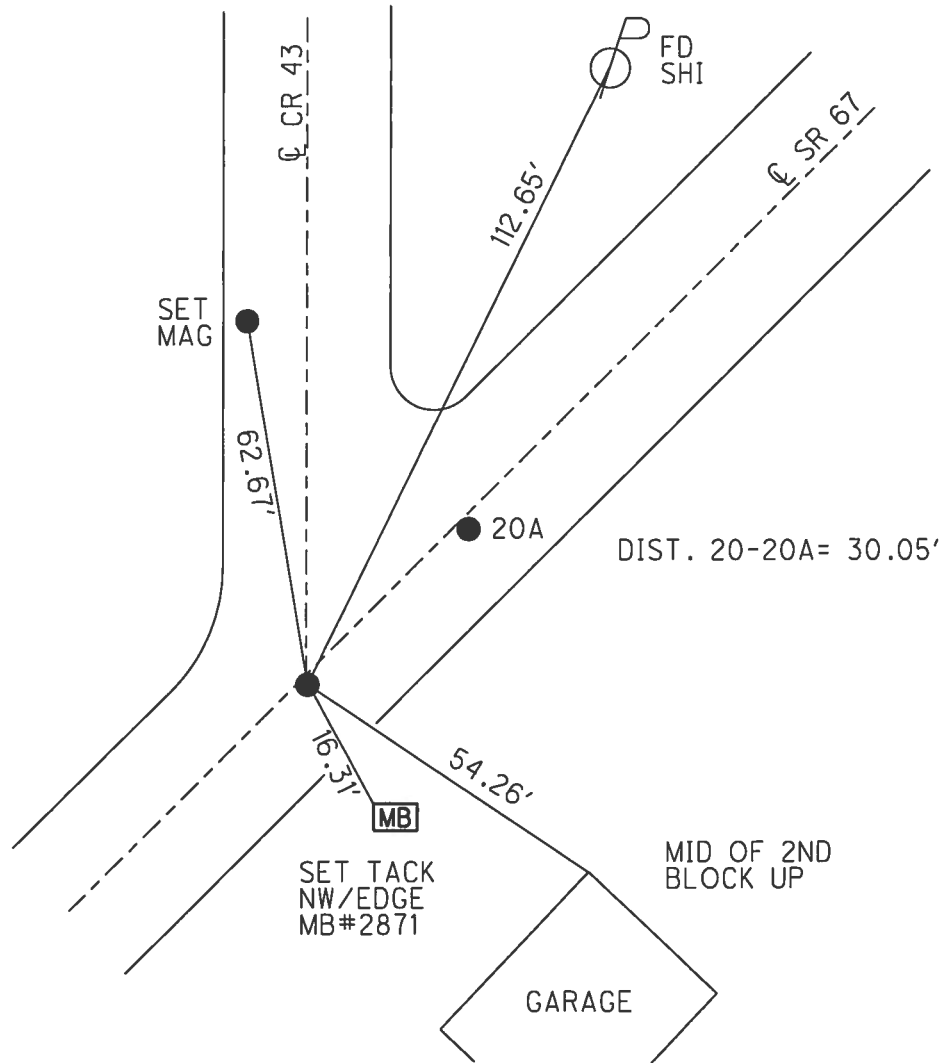
NOTES RHOADES DATE 7/13/17 ROUTE SR 67  
 H.C. O'DONNELL WEATHER CLOUDY COUNTY SENECA  
 R.C. RHOADES TEMP. 81° TOWNSHIP SCIPIO  
 \_\_\_\_\_ SECTION 32  
 \_\_\_\_\_ T 2 N R 16 E

TYPE MONUMENT MAG/WASHER  
 ON SURFACE - ~~BELOW~~ ON \_\_\_\_\_  
~~LEFT~~ - CL PAV'T - RIGHT 1.5'  
9' TO RT EDGE PAVEMENT  
 S.L.M. 401+29.20



Grid: Northing: 516504.641 Easting: 1815851.261

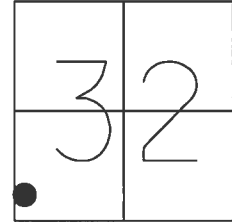
RECORD:  
 P.K./WASHER ATOP  
 R.R.SPIKE  
 STA. 401+34.70  
 FD P.K./WASHER  
 5/30/02, DCH  
 SET MAG/WASHER  
 9/14/02, DCH  
 FD MAG/WASHER  
 REF20  
 2/5/16, JFO  
 SET MAG/WASHER  
 11/14/17, JFO



O.D.O.T. DISTRICT 2 SURVEY OFFICE (USE ONLY)

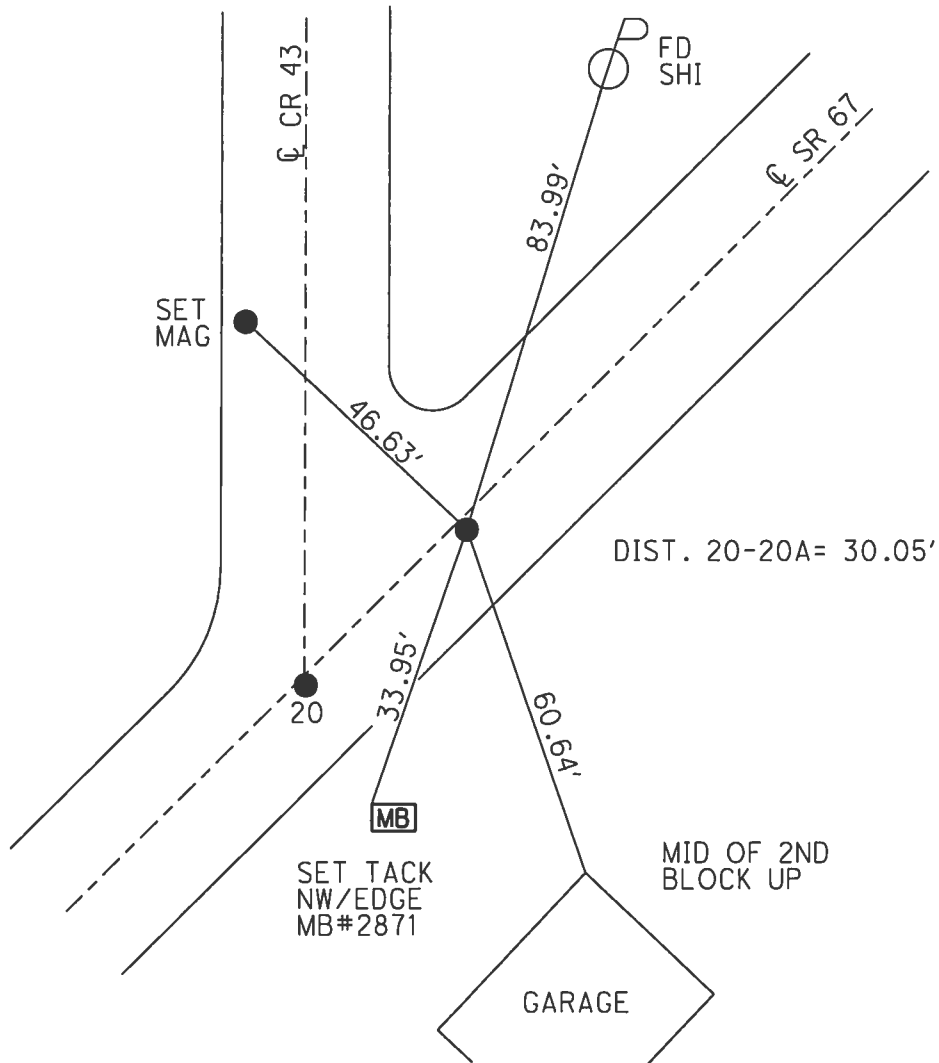
PERSONNEL \_\_\_\_\_ REFERENCE NO. 20 A SHEET 15 OF 25  
 NOTES RHOADES DATE 7/13/17 ROUTE SR 67  
 H.C. O'DONNELL WEATHER CLOUDY COUNTY SENECA  
 R.C. RHOADES TEMP. 81° TOWNSHIP SCIPIO  
 \_\_\_\_\_ SECTION 32  
 \_\_\_\_\_ T 2 N R 16 E

TYPE MONUMENT MAG/WASHER  
 ON SURFACE - ~~BELOW~~ ON \_\_\_\_\_  
~~LEFT~~ - ℄ PAV'T - RIGHT 2.0'  
9' TO RT EDGE PAVEMENT  
 S.L.M. 401+59.25



Grid: Northing: 516529.513 Easting: 1815868.108

RECORD:  
 STA. 402+81.98  
 FD P.K./WASHER  
 5/30/02, DCH  
 SET MAG/WASHER  
 9/14/02, DCH  
 FD MAG/WASHER  
 REFA20  
 2/5/16, JFO  
 SET MAG/WASHER  
 11/14/17, JFO



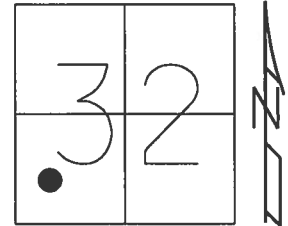
O.D.O.T. DISTRICT 2 SURVEY OFFICE (USE ONLY)

PERSONNEL \_\_\_\_\_ REFERENCE NO. 20 B SHEET 16 OF 25

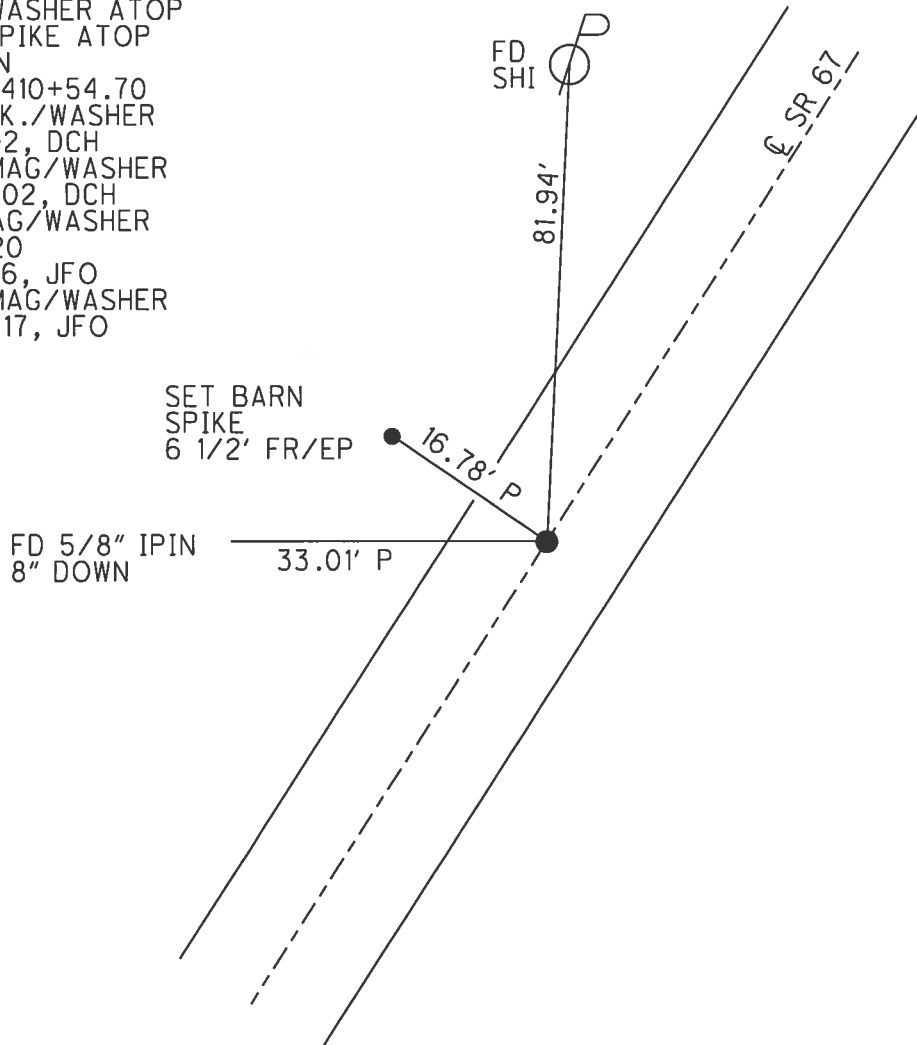
NOTES RHOADES DATE 7/13/17 ROUTE SR 67  
 H.C. O'DONNELL WEATHER CLOUDY COUNTY SENECA  
 R.C. RHOADES TEMP. 79° TOWNSHIP SCIPIO  
 \_\_\_\_\_ SECTION 32  
 \_\_\_\_\_ T 2 N R 16 E

TYPE MONUMENT MAG/WASHER  
 ON SURFACE - ~~BELOW~~ ON \_\_\_\_\_  
 LEFT - ☉ PAV'T - RIGHT ON \_\_\_\_\_  
9.2' TO RT EDGE PAVEMENT  
 S.L.M. 410+48.98

Grid: Northing: 517266.330 Easting: 1816366.845



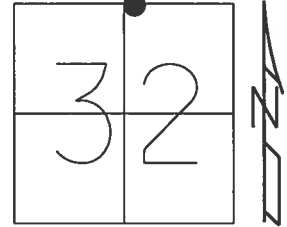
RECORD:  
 P.K./WASHER ATOP  
 R.R.SPIKE ATOP  
 1" IPIN  
 STA. 410+54.70  
 FD P.K./WASHER  
 6/1/02, DCH  
 SET MAG/WASHER  
 9/14/02, DCH  
 FD MAG/WASHER  
 REFB20  
 2/5/16, JFO  
 SET MAG/WASHER  
 11/14/17, JFO



O.D.O.T. DISTRICT 2 SURVEY OFFICE (USE ONLY)

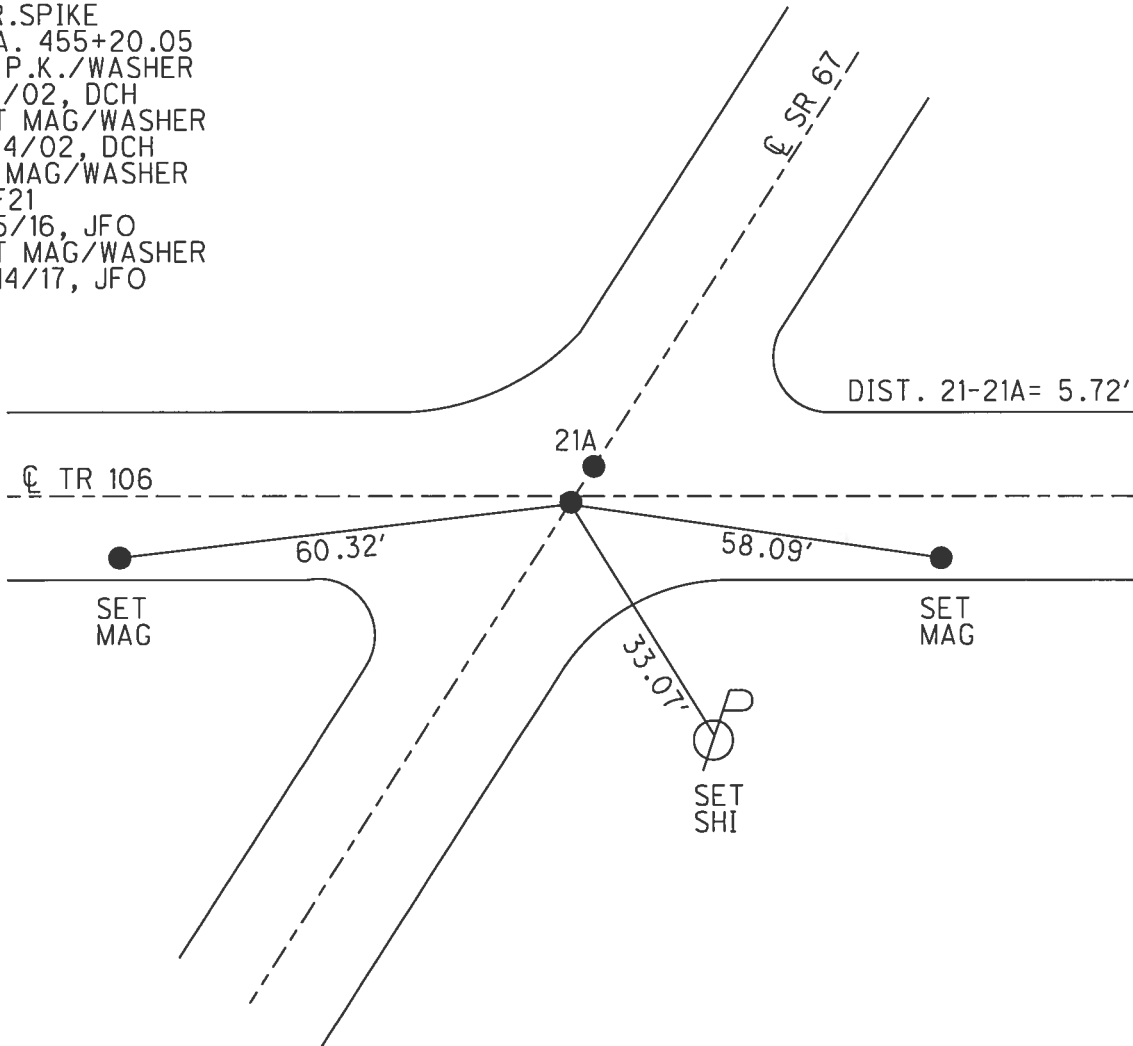
PERSONNEL \_\_\_\_\_ REFERENCE NO. 21 SHEET 17 OF 25  
 NOTES RHOADES DATE 7/13/17 ROUTE SR 67  
 H.C. O'DONNELL WEATHER CLOUDY COUNTY SENECA  
 R.C. RHOADES TEMP. 76° TOWNSHIP SCIPIO  
 \_\_\_\_\_ SECTION 32  
 \_\_\_\_\_ T 2 N R 16 E

TYPE MONUMENT MAG/WASHER  
 ON SURFACE - ~~BELOW~~ ON  
 LEFT - ☉ PAV'T - ~~RIGHT~~ 0.5'  
 \_\_\_\_\_ TO \_\_\_\_\_ EDGE PAVEMENT  
 S.L.M. 455+13.41



Grid: Northing: 520960.134 Easting: 1818874.233

RECORD:  
 P.K./WASHER ATOP  
 R.R.SPIKE  
 STA. 455+20.05  
 FD P.K./WASHER  
 6/1/02, DCH  
 SET MAG/WASHER  
 9/14/02, DCH  
 FD MAG/WASHER  
 REF21  
 2/5/16, JFO  
 SET MAG/WASHER  
 11/14/17, JFO



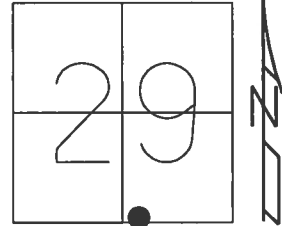
O.D.O.T. DISTRICT 2 SURVEY OFFICE (USE ONLY)

PERSONNEL \_\_\_\_\_ REFERENCE NO. 21 A SHEET 18 OF 25

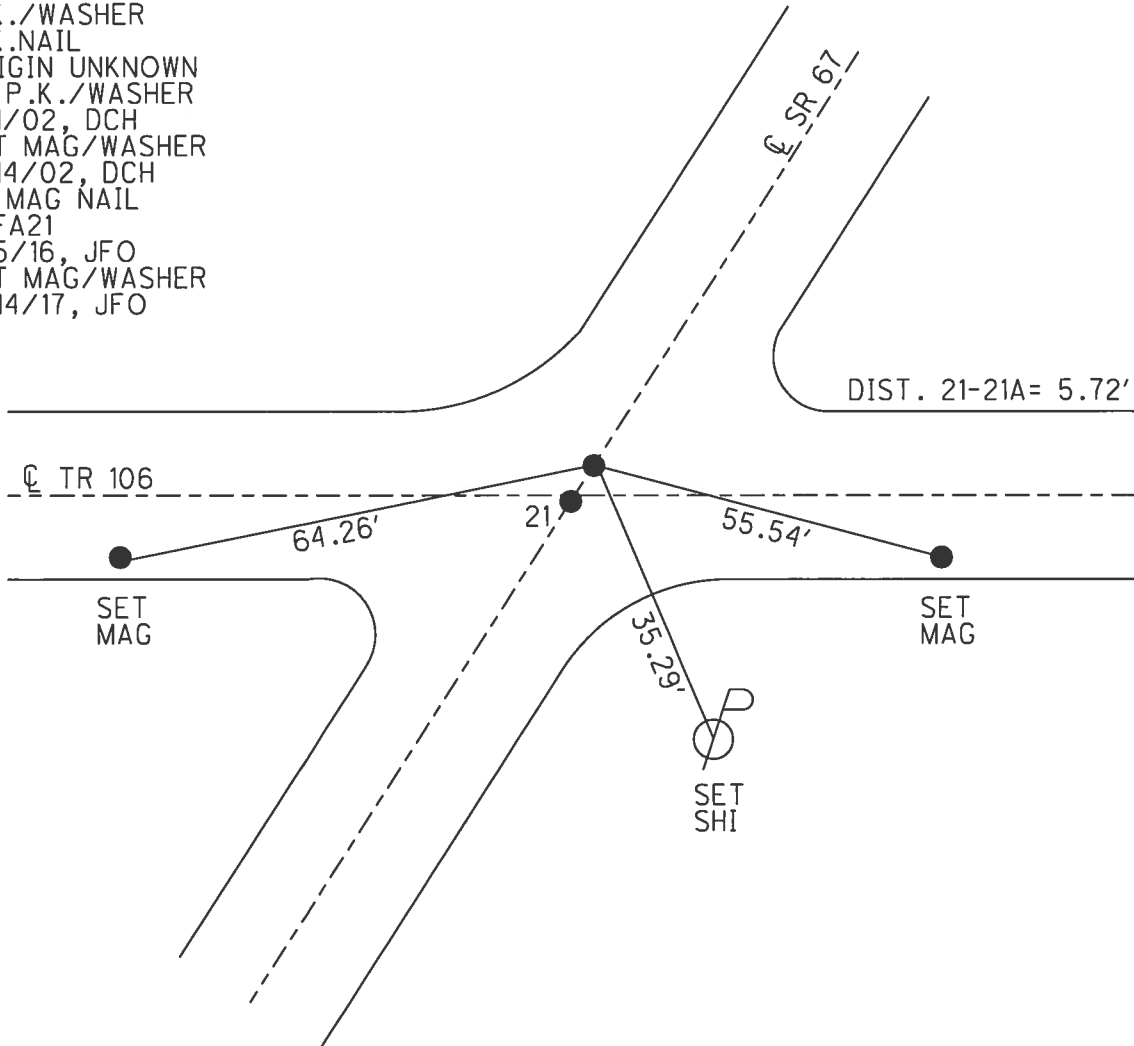
NOTES RHOADES DATE 7/13/17 ROUTE SR 67  
 H.C. O'DONNELL WEATHER CLOUDY COUNTY SENECA  
 R.C. RHOADES TEMP. 76° TOWNSHIP SCIPIO  
 \_\_\_\_\_ SECTION 29  
 \_\_\_\_\_ T 2 N R 16 E

TYPE MONUMENT MAG NAIL  
 ON SURFACE - ~~BELOW~~ ON \_\_\_\_\_  
 LEFT - ☉ PAV'T - ~~RIGHT~~ 0.5'  
 \_\_\_\_\_ TO \_\_\_\_\_ EDGE PAVEMENT  
 S.L.M. 455+19.13

Grid: Northing: 520964.797 Easting: 1818877.505



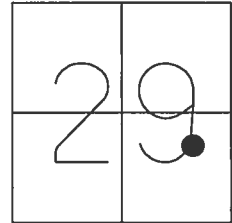
RECORD:  
 P.K./WASHER ATOP  
 P.K./WASHER  
 P.K.NAIL  
 ORIGIN UNKNOWN  
 FD P.K./WASHER  
 6/1/02, DCH  
 SET MAG/WASHER  
 9/14/02, DCH  
 FD MAG NAIL  
 REFA21  
 2/5/16, JFO  
 SET MAG/WASHER  
 11/14/17, JFO



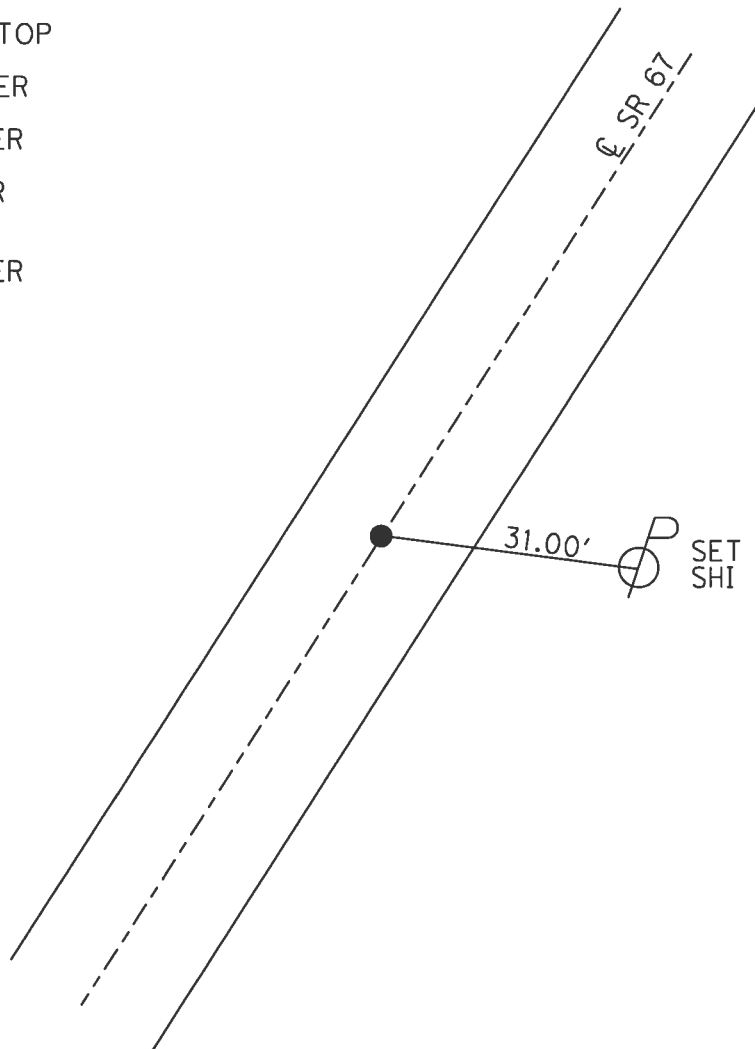
O.D.O.T. DISTRICT 2 SURVEY OFFICE (USE ONLY)

PERSONNEL \_\_\_\_\_ REFERENCE NO. 22 SHEET 19 OF 25  
 NOTES RHOADES DATE 7/13/17 ROUTE SR 67  
 H.C. O'DONNELL WEATHER CLOUDY COUNTY SENECA  
 R.C. RHOADES TEMP. 76° TOWNSHIP SCIPIO  
 \_\_\_\_\_ SECTION 29  
 \_\_\_\_\_ T 2 N R 16 E

TYPE MONUMENT MAG/WASHER  
 ON SURFACE - ~~BELOW~~ ON  
 LEFT - ☉ PAV'T - ~~RIGHT~~ 0.5'  
9.4' TO RT EDGE PAVEMENT  
 S.L.M. 477+54.95  
 Grid: Northing: 522807.324 Easting: 1820144.030



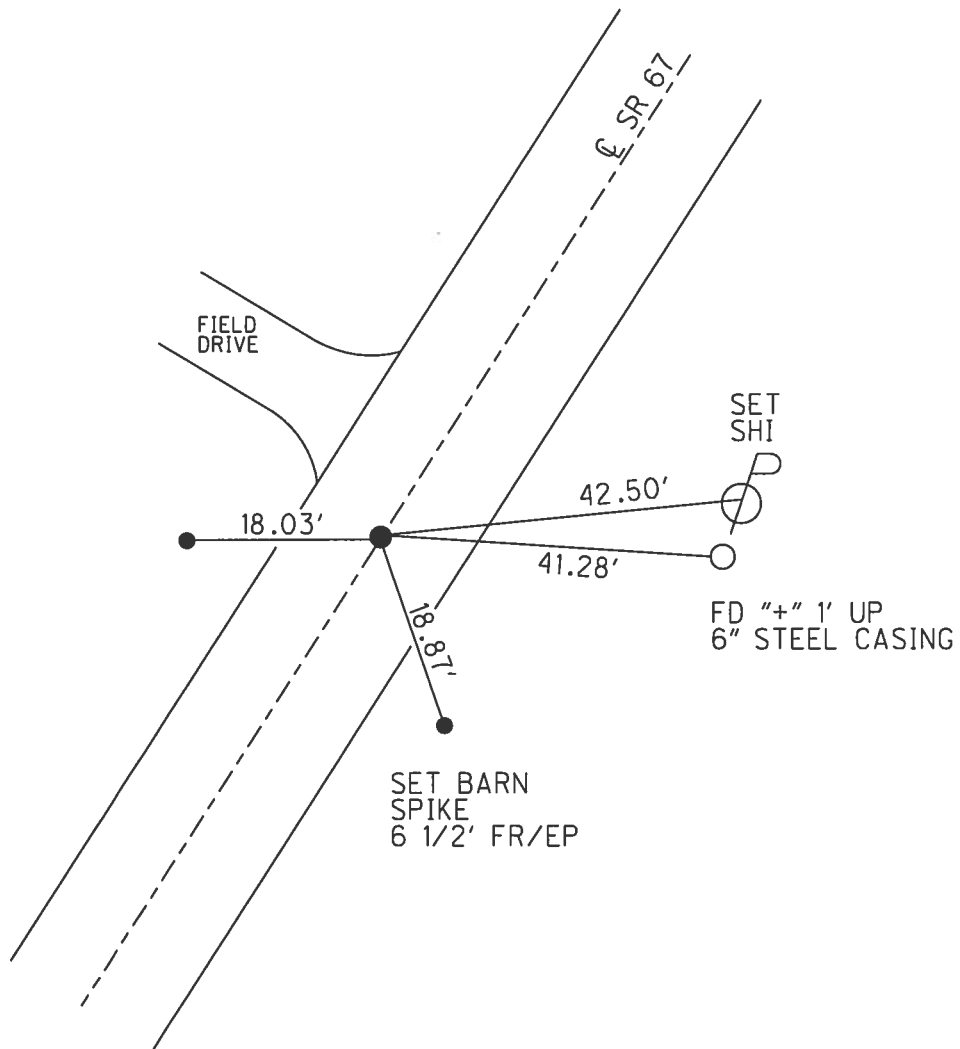
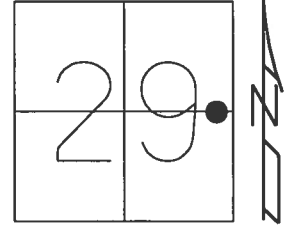
RECORD:  
 477+66.25  
 P.K./WASHER ATOP  
 R.R.SPIKE  
 SET P.K./WASHER  
 6/1/02, DCH  
 SET MAG/WASHER  
 9/14/02, DCH  
 FD MAG/WASHER  
 REF22  
 2/5/16, JFO  
 SET MAG/WASHER  
 11/14/17, JFO



O.D.O.T. DISTRICT 2 SURVEY OFFICE (USE ONLY)

PERSONNEL \_\_\_\_\_ REFERENCE NO. 23 SHEET 20 OF 25  
 NOTES RHOADES DATE 6/13/17 ROUTE SR 67  
 H.C. O'DONNELL WEATHER SUNNY COUNTY SENECA  
 R.C. POORE TEMP. 91° TOWNSHIP SCIPIO  
 \_\_\_\_\_ SECTION 29  
 \_\_\_\_\_ T 2 N R 16 E

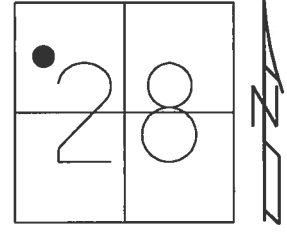
TYPE MONUMENT MAG NAIL  
 ON SURFACE - ~~BELOW~~ ON  
 LEFT - ☉ PAV'T - RIGHT ON  
9.8' TO RT EDGE PAVEMENT  
 S.L.M. 487+47.60  
 Grid: Northing: 523630.884 Easting: 1820698.197



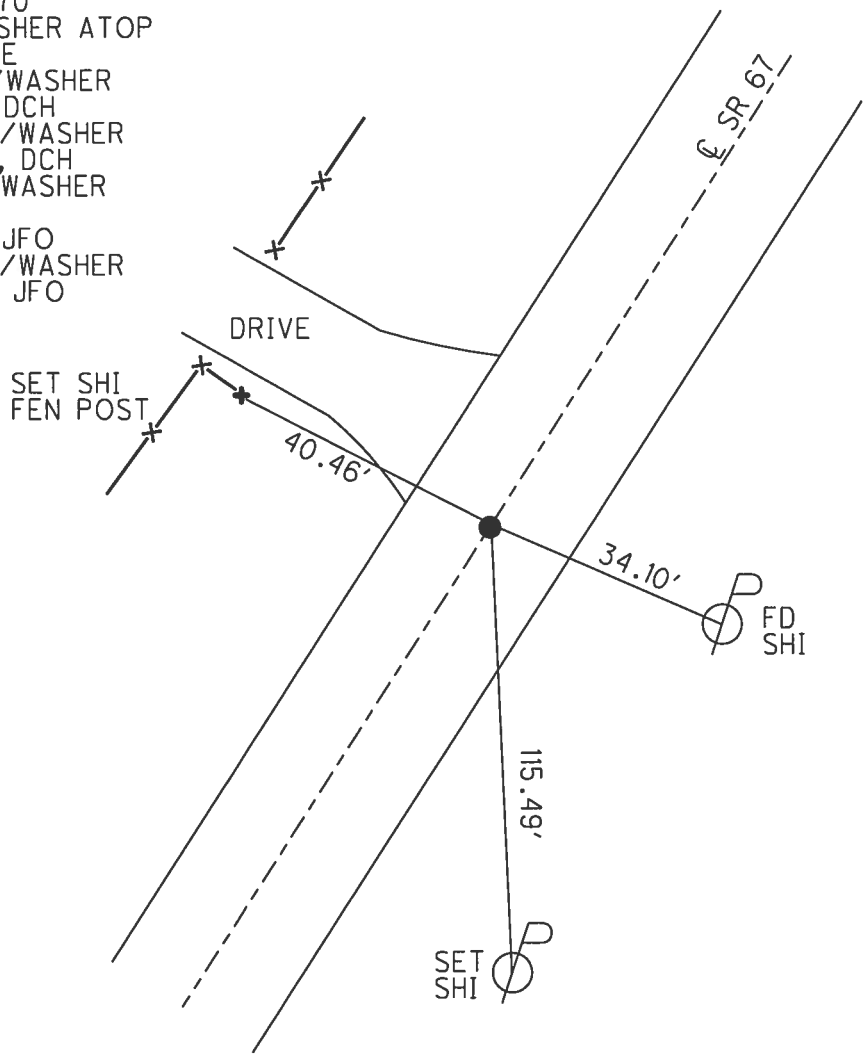
O.D.O.T. DISTRICT 2 SURVEY OFFICE (USE ONLY)

PERSONNEL \_\_\_\_\_ REFERENCE NO. 25 SHEET 21 OF 25  
 NOTES RHOADES DATE 6/13/17 ROUTE SR 67  
 H.C. O'DONNELL WEATHER SUNNY COUNTY SENECA  
 R.C. POORE TEMP. 91° TOWNSHIP SCIPIO  
 \_\_\_\_\_ SECTION 28  
 \_\_\_\_\_ T 2 N R 16 E

TYPE MONUMENT MAG/WASHER  
 ON SURFACE - ~~BELOW~~ ON  
~~LEFT~~ - ℄ PAV'T - RIGHT 0.5'  
9.6' TO RT EDGE PAVEMENT  
 S.L.M. 505+20.55  
 Grid: Northing: 525103.454 Easting: 1821685.566



RECORD:  
 505+26.70  
 P.K./WASHER ATOP  
 R.R.SPIKE  
 FD P.K./WASHER  
 6/1/02, DCH  
 SET MAG/WASHER  
 9/14/02, DCH  
 FD MAG/WASHER  
 REF25  
 2/5/16, JFO  
 SET MAG/WASHER  
 11/14/17, JFO





**O.D.O.T. DISTRICT 2 SURVEY OFFICE (USE ONLY)**

PERSONNEL \_\_\_\_\_ REFERENCE NO. 26 SHEET 22 OF 25

NOTES RHOADES DATE 6/13/17 ROUTE SR 67  
 H.C. O'DONNELL WEATHER SUNNY COUNTY SENECA  
 R.C. POORE TEMP. 91' TOWNSHIP SCIPIO  
 \_\_\_\_\_ SECTION 28  
 \_\_\_\_\_ T 2 N R 16 E

TYPE MONUMENT MAG/WASHER

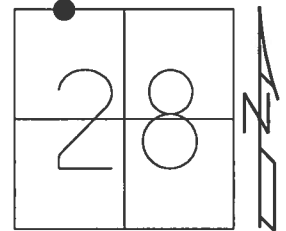
~~ON SURFACE~~ - BELOW 2"

LEFT - CL PAV'T - ~~RIGHT~~ 0.5'

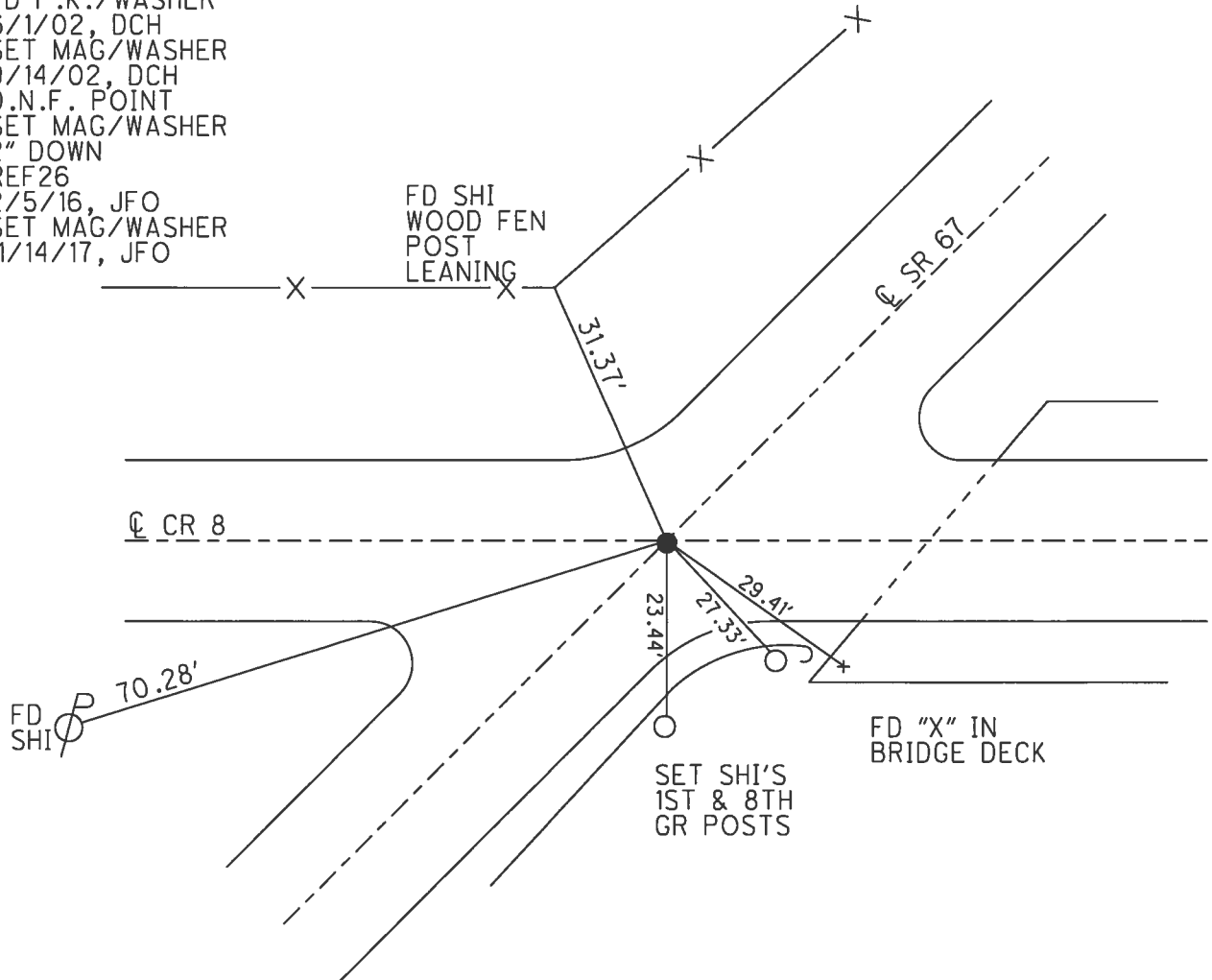
TO EDGE PAVEMENT

S.L.M. 519+54.98

GRID: NORTHING: 526292.931 EASTING: 1822487.272



RECORD:  
 519+64.40  
 P.K./WASHER ATOP  
 R.R.SPIKE  
 FD P.K./WASHER  
 6/1/02, DCH  
 SET MAG/WASHER  
 9/14/02, DCH  
 D.N.F. POINT  
 SET MAG/WASHER  
 2" DOWN  
 REF26  
 2/5/16, JFO  
 SET MAG/WASHER  
 11/14/17, JFO



O.D.O.T. DISTRICT 2 SURVEY OFFICE (USE ONLY)

PERSONNEL \_\_\_\_\_ REFERENCE NO. 27 SHEET 23 OF 25

NOTES	RHOADES _____	DATE	<u>6/13/17</u>	ROUTE	<u>SR 67</u>
H.C.	<u>O'DONNELL</u>	WEATHER	<u>SUNNY</u>	COUNTY	<u>SENECA</u>
R.C.	<u>POORE</u>	TEMP.	<u>91°</u>	TOWNSHIP	<u>SCIPIO</u>
	_____			SECTION	<u>21</u>
	_____			T	<u>2</u> N R <u>16</u> E

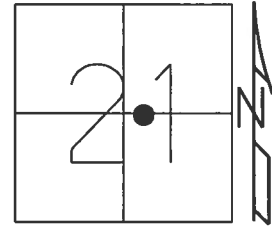
TYPE MONUMENT MAG/WASHER

ON SURFACE - ~~BELOW~~ ON \_\_\_\_\_

~~LEFT~~ - CL PAV'T - RIGHT 2.0'

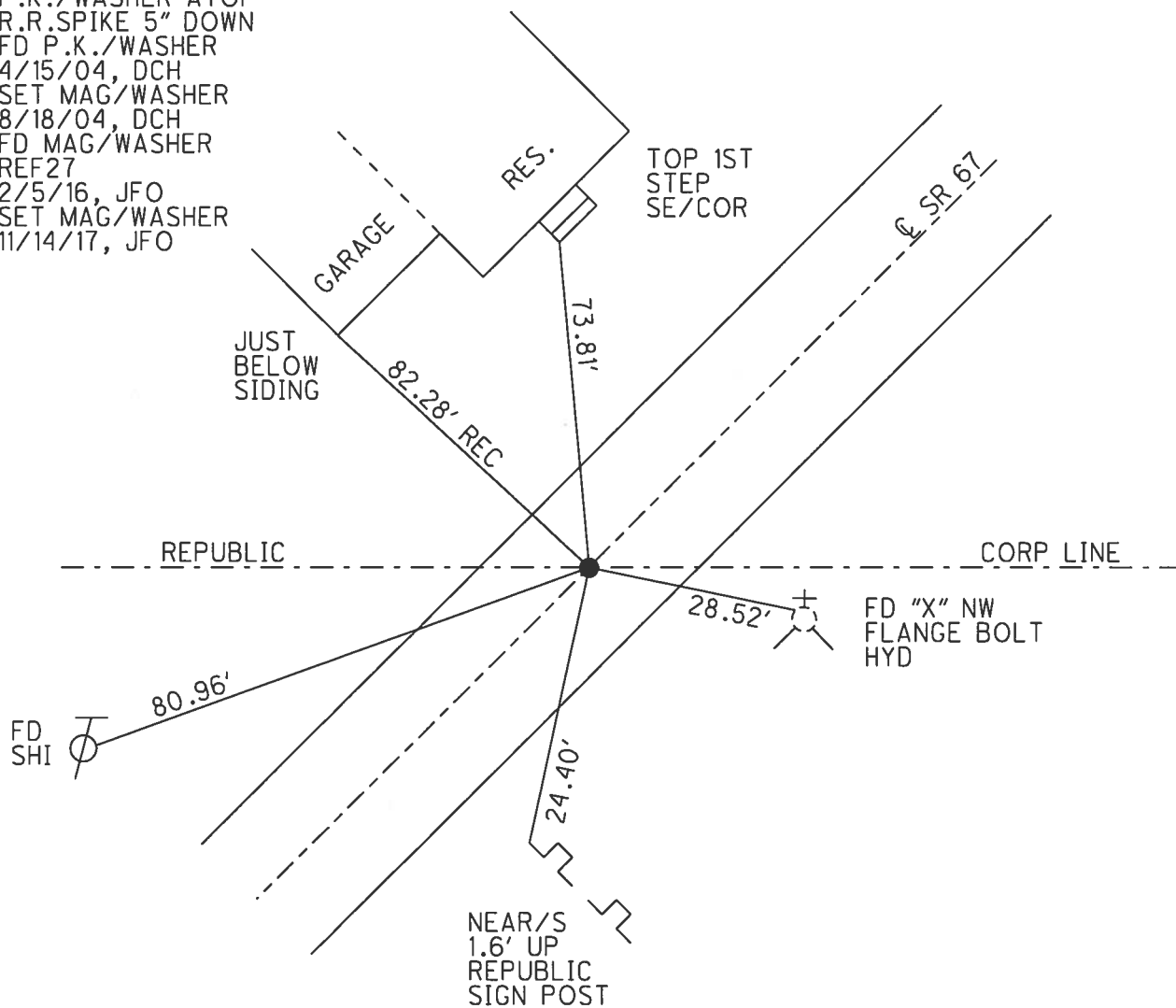
- TO - EDGE PAVEMENT

S.L.M. 551+62.55



GRID: NORTHING: 528945.766 EASTING: 1824290.316

RECORD:  
 551+69.35  
 P.K./WASHER ATOP  
 R.R.SPIKE 5" DOWN  
 FD P.K./WASHER  
 4/15/04, DCH  
 SET MAG/WASHER  
 8/18/04, DCH  
 FD MAG/WASHER  
 REF27  
 2/5/16, JFO  
 SET MAG/WASHER  
 11/14/17, JFO

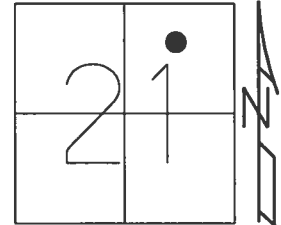


**O.D.O.T. DISTRICT 2 SURVEY OFFICE (USE ONLY)**

PERSONNEL \_\_\_\_\_ REFERENCE NO. 28 SHEET 24 OF 25

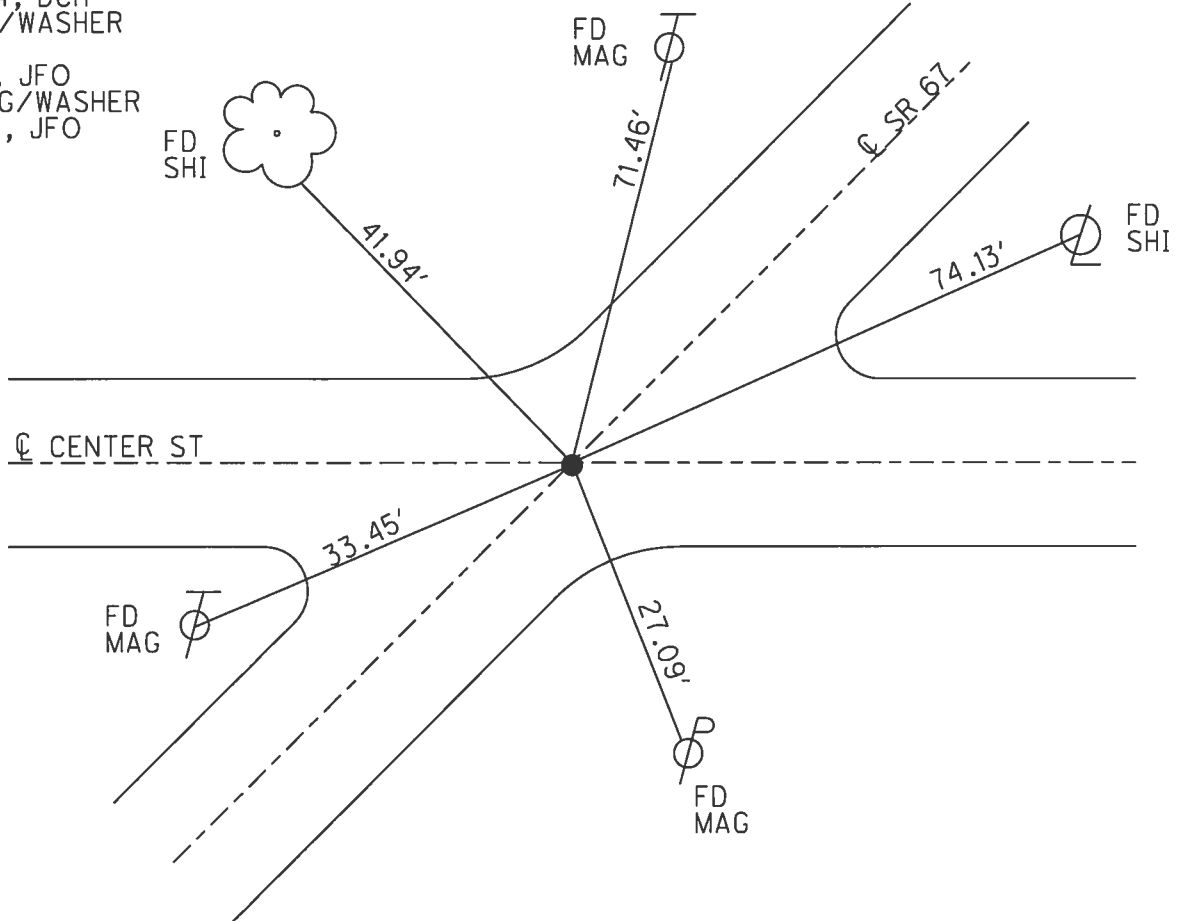
NOTES RHOADES \_\_\_\_\_ DATE 6/13/17 ROUTE SR 67  
 H.C. O'DONNELL \_\_\_\_\_ WEATHER SUNNY COUNTY SENECA  
 R.C. POORE \_\_\_\_\_ TEMP. 91° TOWNSHIP SCIPIO  
 \_\_\_\_\_ SECTION 21  
 \_\_\_\_\_ T 2 N R 16 E

TYPE MONUMENT \_\_\_\_\_ MAG/WASHER \_\_\_\_\_  
 ON SURFACE - ~~BELOW~~ \_\_\_\_\_ ON \_\_\_\_\_  
 LEFT - ☉ PAV'T - ~~RIGHT~~ \_\_\_\_\_ 1.5'  
 \_\_\_\_\_ TO \_\_\_\_\_ EDGE PAVEMENT  
 S.L.M. 573+08.61



GRID: NORTHING: 530718.935 EASTING: 1825499.209

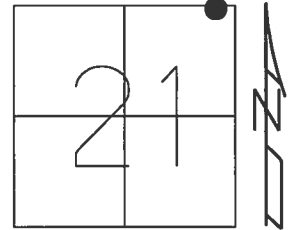
RECORD:  
 574+19 ±  
 FD MAG NAIL ATOP  
 R.R.SPIKE 12" DOWN  
 SET BY HANK & ASSOC.  
 4/15/04, DCH  
 SET MAG/WASHER  
 8/18/04, DCH  
 FD MAG/WASHER  
 REF28  
 2/5/16, JFO  
 SET MAG/WASHER  
 11/14/17, JFO



O.D.O.T. DISTRICT 2 SURVEY OFFICE (USE ONLY)

PERSONNEL	REFERENCE NO.	<u>29</u>	SHEET	<u>25</u>	OF	<u>25</u>
NOTES	<u>RHOADES</u>	DATE	<u>8/1/17</u>	ROUTE	<u>SR 67</u>	
H.C.	<u>HOMAN</u>	WEATHER	<u>SUNNY</u>	COUNTY	<u>SENECA</u>	
R.C.	<u>CARSON</u>	TEMP.	<u>70°</u>	TOWNSHIP	<u>SCIPIO</u>	
	<u>POORE</u>			SECTION	<u>16</u>	
				T	<u>2</u>	R
					<u>16</u>	<u>E</u>

TYPE MONUMENT MAG/WASHER  
 ON SURFACE - ~~BELOW~~ ON  
 LEFT - Q PAV'T - ~~RIGHT~~ 1.5'  
12' TO LT EDGE PAVEMENT  
 S.L.M. 583+80.70  
 Grid: Northing: 531607.876 Easting: 1826098.508



RECORD:  
 FD MINE SPIKE  
 3.5" DOWN ATOP  
 5/8" IPIN  
 6.5" DOWN  
 SET MAG/WASHER  
 8/18/04, MB  
 FD MAG/WASHER  
 REF71  
 5/7/14, EBW  
 FD MAG/WASHER  
 REF1  
 1/8/16, JFO  
 FD MAG/WASHER  
 REF29  
 2/5/16, JFO  
 SET MAG/WASHER  
 8/1/17, DCH

NOTE:  
 SR 18=REF 71  
 SR 162=REF 1

