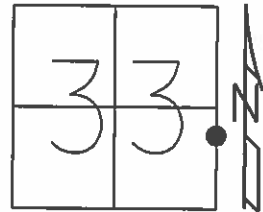


O.D.O.T. DISTRICT 2 SURVEY OFFICE (USE ONLY)

PERSONNEL \_\_\_\_\_ REFERENCE NO. 2 SHEET 2 OF 11  
 NOTES RHOADES DATE 4/3/15 ROUTE SR 67  
 H.C. LEU WEATHER FAIR COUNTY SENECA  
 R.C. RHOADES TEMP. 46° TOWNSHIP EDEN  
 \_\_\_\_\_ SECTION 33  
 \_\_\_\_\_ T 1 N R 15 E

TYPE MONUMENT P.K./WASHER  
~~ON SURFACE~~ - BELOW 3.5'  
 LEFT - ☉ PAV'T - ~~RIGHT~~ 0.4'  
 \_\_\_\_\_ TO \_\_\_\_\_ EDGE PAVEMENT  
 S.L.M. 20+09.33  
 Grid: Northing: 485589.366 Easting: 1794044.458

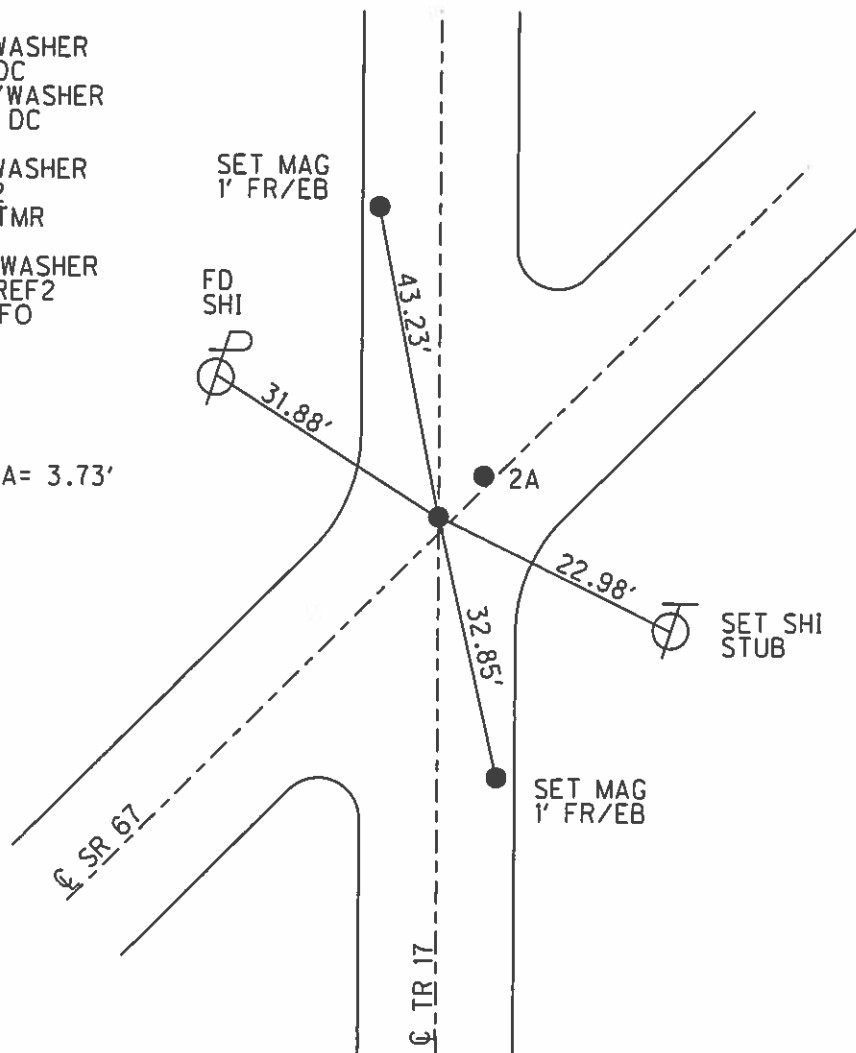


RECORD:  
 FD P.K./WASHER  
 5/3/94, DC  
 SET P.K./WASHER  
 5/26/94, DC

FD P.K./WASHER  
 GPS, REF2  
 2/19/14, TMR

SET MAG/WASHER  
 GPS, NEWREF2  
 7/8/15, JFO

DIST. 2-2A = 3.73'



# O.D.O.T. DISTRICT 2 SURVEY OFFICE

PERSONNEL \_\_\_\_\_

REFERENCE NO. 2

SHEET 2 OF 7

NOTES CHENEY

H.C. RIPPLE

DATE 5-3-94

ROUTE 67

R.C. BARBOUR

WEATHER SUNNY

COUNTY SENECA

GEYMAN

TEMP. +68°

TOWNSHIP EDEN

SECTION 33

T. 1 N. R. 15 E.

Reset

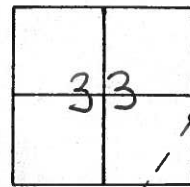
TYPE MONUMENT PK/WASHER 9-26-94

ON SURFACE - BELOW Yes

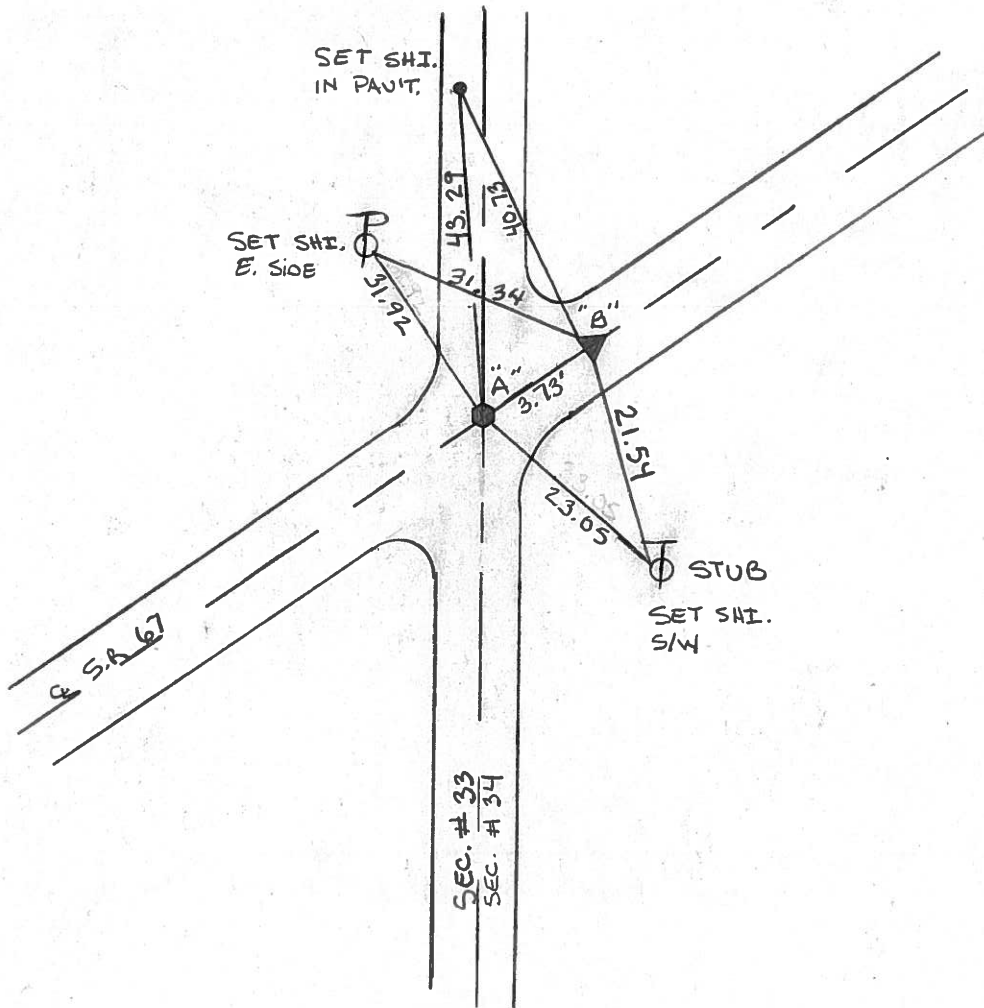
~~LEFT~~ - & PAV'T. - ~~RIGHT~~ Yes

TO EDGE PAVEMENT

S.L.M. 20+15



"B" RECORD PI  
STA. 20+14.80



County Seneca S.R. #67

Date 6/08/82

Township Eden

Weather sunny

Section # 33

Temp. 68°

T/N, RISE

Personnel Cronin

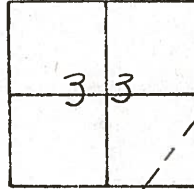
Ripple

Geyman

Mosser

Barboor

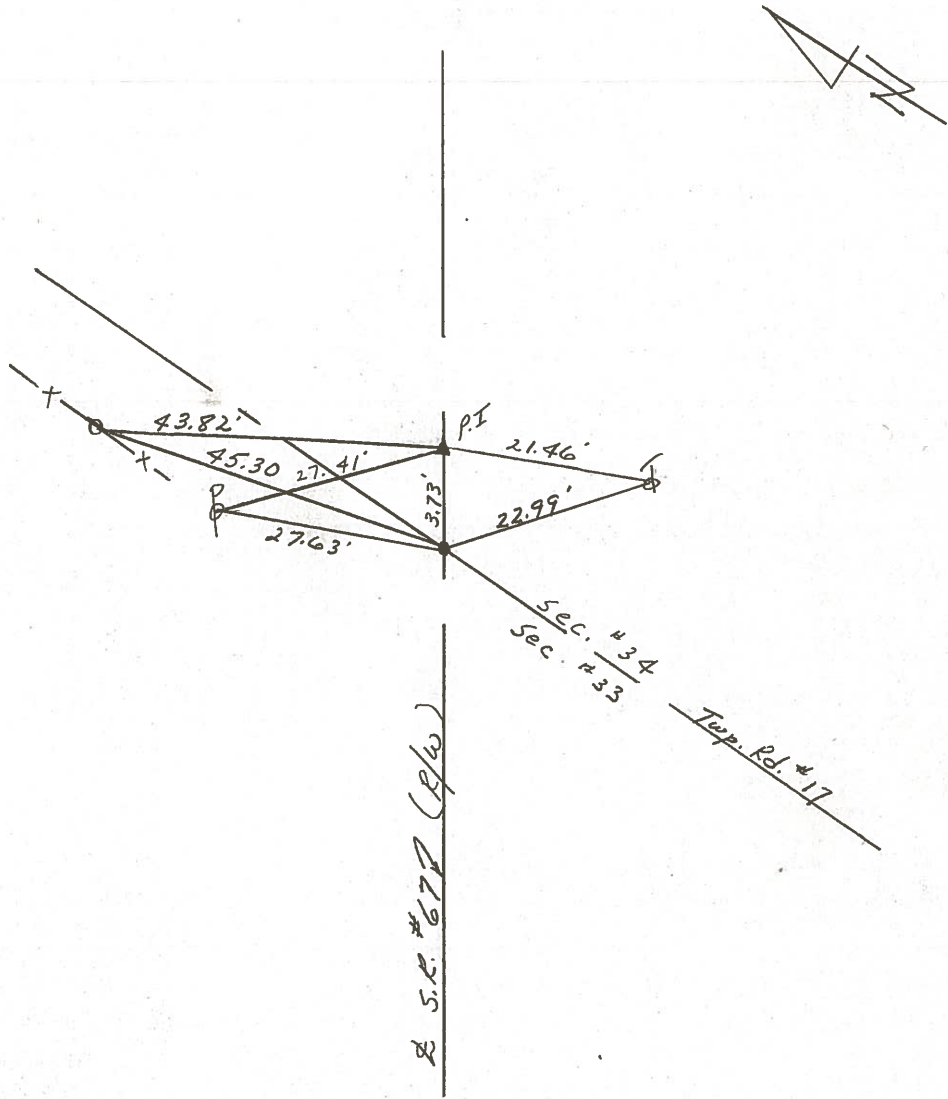
#2



P.I. \_\_\_\_\_

20+14.80

Fd. nothing: Reset  
boat spike, & washer



County Seneca S.R. 67

Date 6-13-79

Township Eden

Weather Fair

Section 33 & 34

Temp. 68°

T/LN, R/L/E

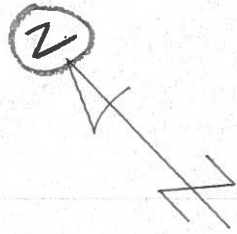
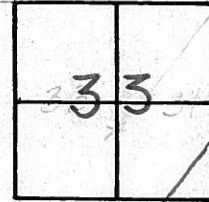
Personnel Schneider

Mosser

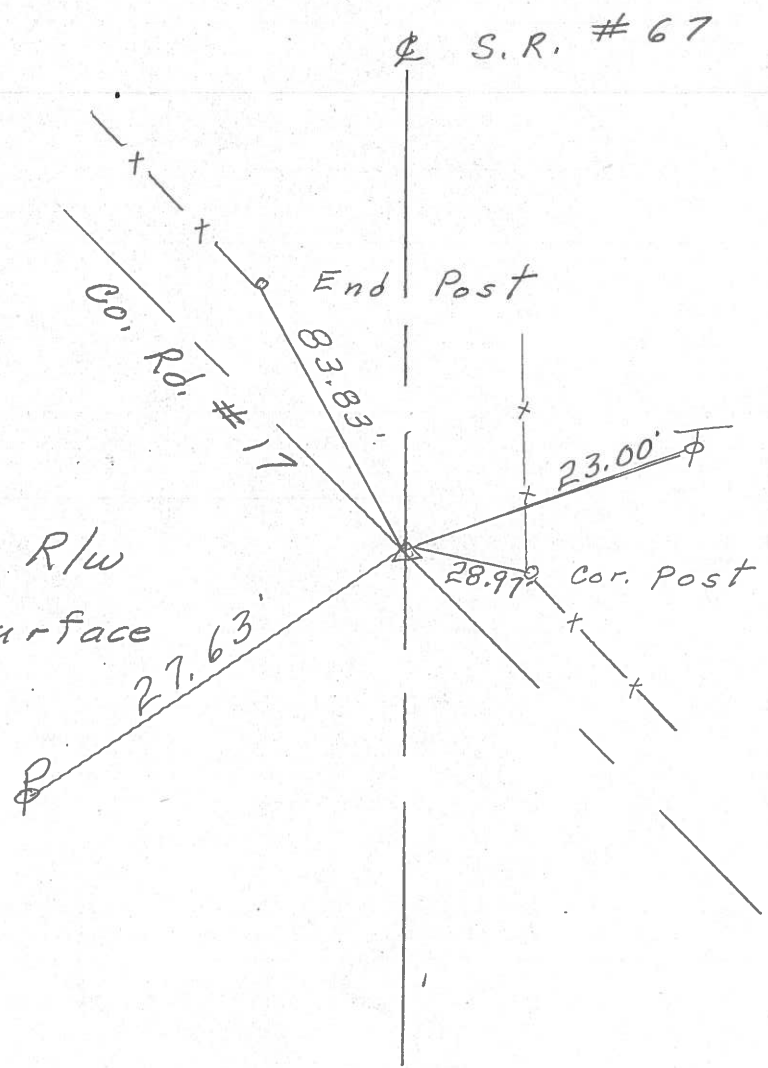
Barbour

\_\_\_\_\_

\_\_\_\_\_



20 + 14.8  
R.R. spk. on E R/W  
small spk. on surface





PERSONNEL TITLE PERSONNEL TITLE COUNTY Seneca DATE Oct. 22, '68  
 2-H-105 Ash & Cronin S. R. #67 WEATHER Partly Cloudy  
Ripple SEC. W-B-X-P-Z TEMP. 65°  
Geyman JOB NO. 46/11 02994  
Anderson  
 DESCRIPTION Check Control Points & Ties

