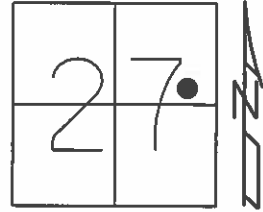


O.D.O.T. DISTRICT 2 SURVEY OFFICE (USE ONLY)

PERSONNEL \_\_\_\_\_ REFERENCE NO. 6 SHEET 7 OF 11  
 NOTES RHOADES DATE 4/3/15 ROUTE SR 67  
 H.C. O'DONNELL WEATHER CLOUDY COUNTY SENECA  
 R.C. LEU TEMP. 59° TOWNSHIP EDEN  
 \_\_\_\_\_ SECTION 27  
 \_\_\_\_\_ T 1 N R 15 E

TYPE MONUMENT P.K.SHANK  
~~ON SURFACE~~ - BELOW 1"  
 LEFT - ℄ PAV'T - ~~RIGHT~~ 0.5'  
9.1' TO LT EDGE PAVEMENT  
 S.L.M. 101+03.52  
 Grid: Northing: 492106.106 Easting: 1798845.284

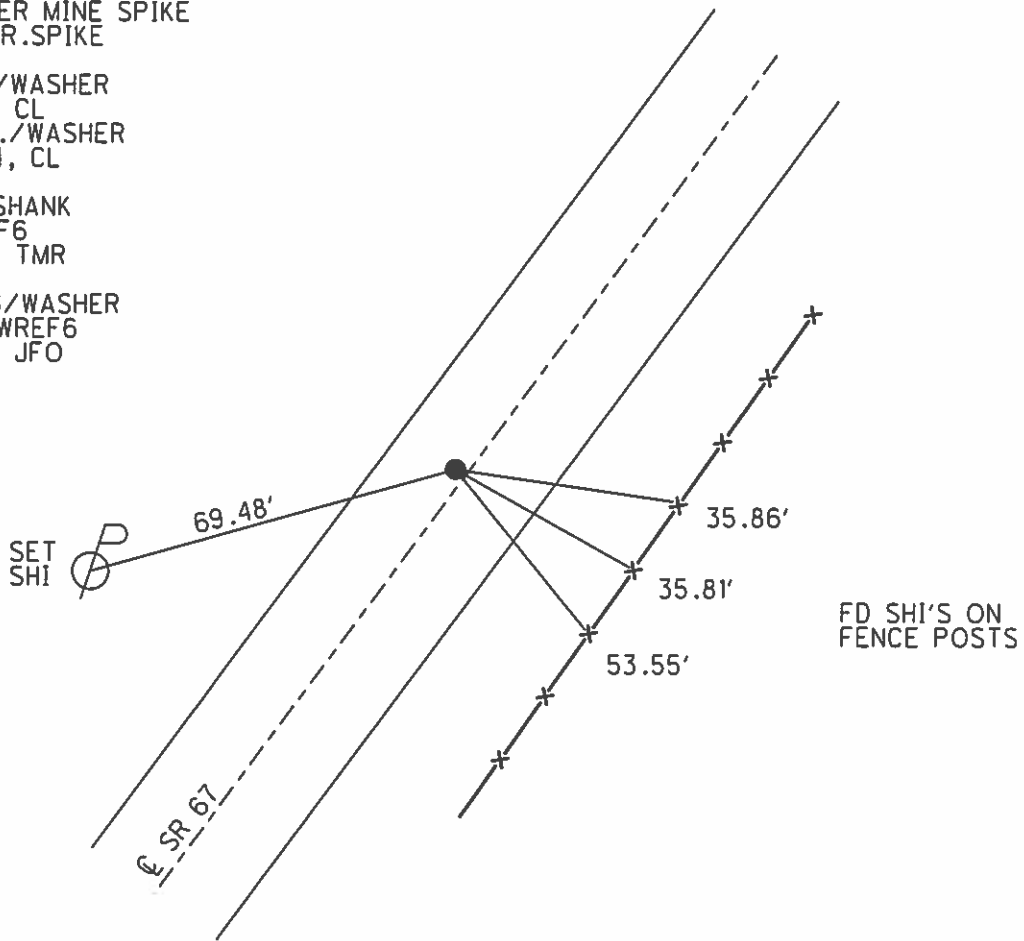


RECORD: P.I.  
 STA = 101+32.50  
 P.K. OVER MINE SPIKE  
 OVER R.R.SPIKE

FD P.K./WASHER  
 5/3/94, CL  
 SET P.K./WASHER  
 9/26/94, CL

FD P.K.SHANK  
 GPS, REF6  
 2/19/14, TMR

SET MAG/WASHER  
 GPS, NEWREF6  
 7/13/15, JFO



# O.D.O.T. DISTRICT 2 SURVEY OFFICE

PERSONNEL \_\_\_\_\_

REFERENCE NO. 6

SHEET 5 OF 7

NOTES LOENRKE

H.C. RIPPLE

DATE 5-3-94

ROUTE S.R. 67

R.C. BARBOUR

WEATHER \_\_\_\_\_

COUNTY Seneca

GREYMAN

TEMP. \_\_\_\_\_

TOWNSHIP EDEN

SECTION 27

T. 1 N. R 15 E

Reset 9-26-94

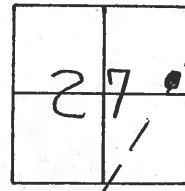
TYPE MONUMENT P.K. / WASHER

ON SURFACE - ~~BELOW~~ Yes

LEFT - ~~C~~ PAV'T. - ~~RIGHT~~ 0.5

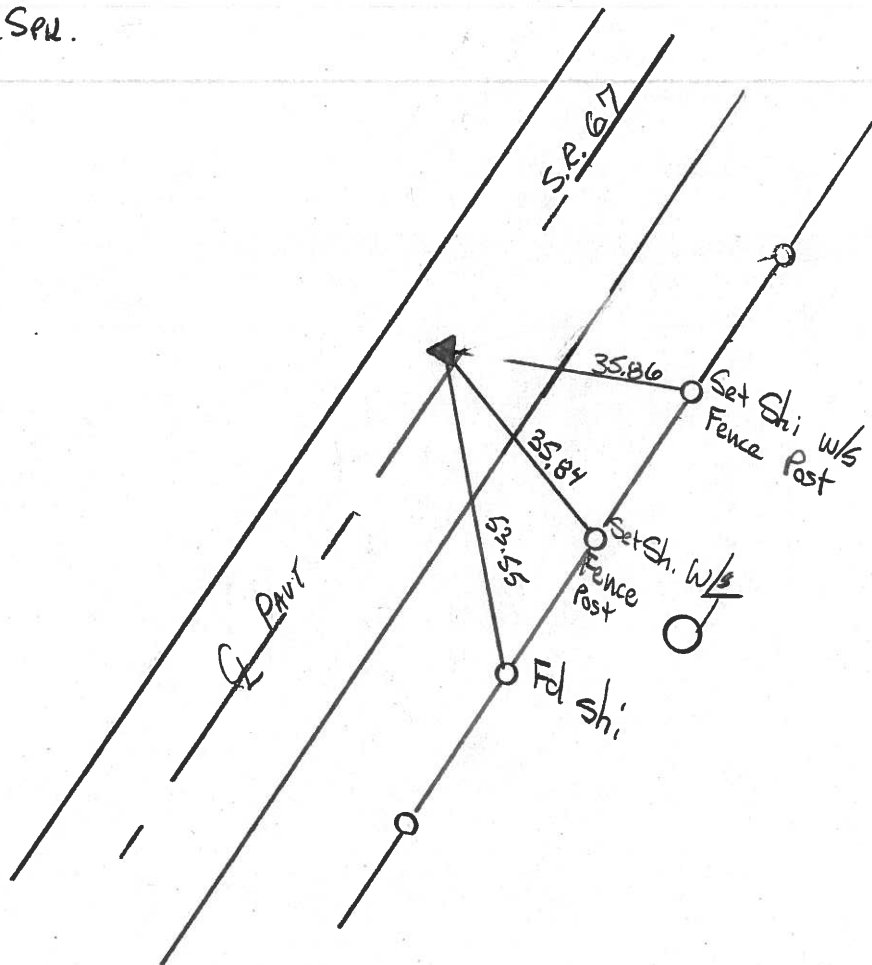
9.5 TO LT EDGE PAVEMENT

S.L.M. 101+31



RECORD P.I. Sta 101+32.50

P.K. over Mine SAK over R.R. SAK.



County Seneca S.R. #67

Date 6/08/82

Township Eden

Weather sunny

Section # 27

Temp. 75°

T/N, R/E

Personnel Cronin

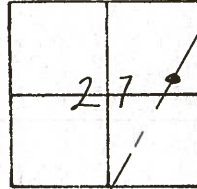
Ripple

Geyman

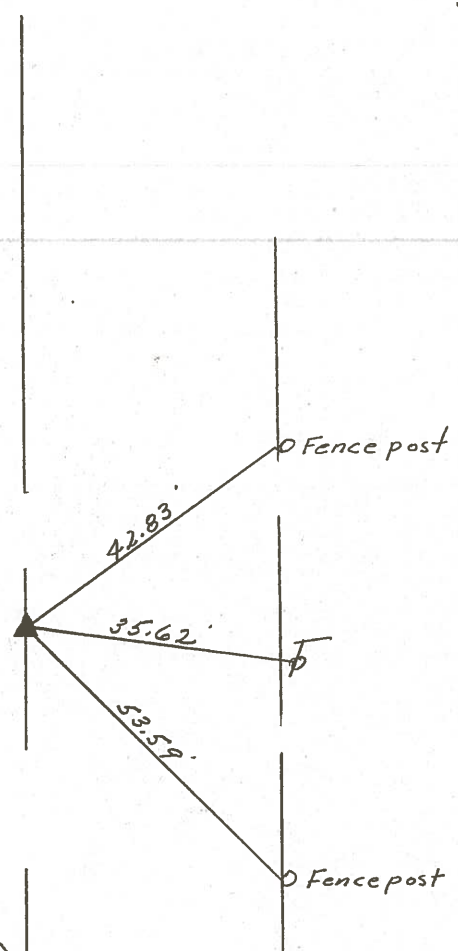
Mosser

Barbour

#6



P.I  
101 + 32.50  
Mine spike atop R.R. spike  
Reset P.K. & Washer  
1' Lt. & Pavement



E R/W S.R. #67B

County Seneca S.R. 67

Date 6-13-79

Township Eden

Weather Fair

Section 27

Temp. 72°

T1N, R1E

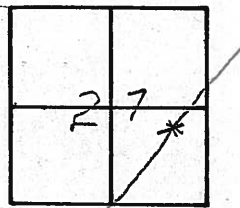
Personnel Schneider

Mosser

Barbour

\_\_\_\_\_

\_\_\_\_\_



(6)



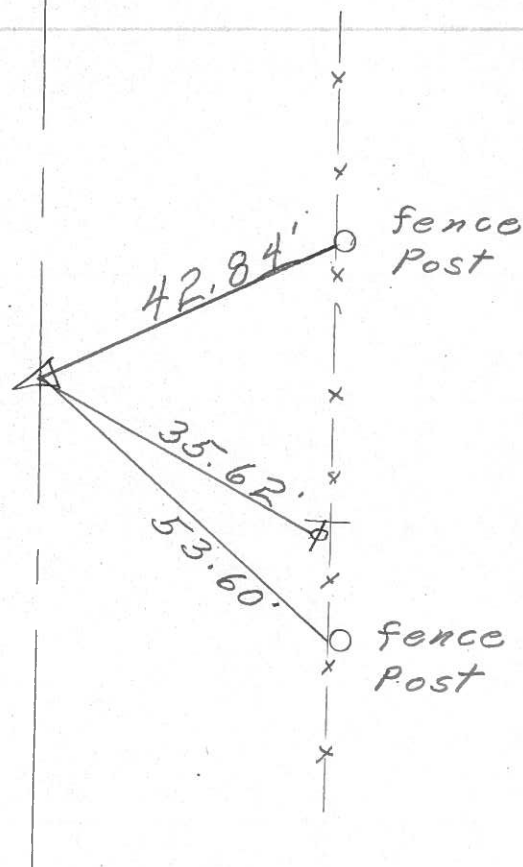
⊥ S.R. # 67

P. I.

101 + 32.5

R. R. spk. on ⊥ R/W

Small spk. on surface



PERSONNEL TITLE PERSONNEL TITLE

COUNTY Seneca DATE 12-21-65

S. R. # 67 WEATHER

SEC. TEMP.

DESCRIPTION LEFT CENTER LINE RIGHT JOB NO.

10

FOUND 12/13/68  
ASH & CROW

P.I. 134+81.1  
R.R. on & R/W  
Inter section of S.H. 269  
& S.H. #199 in Melmore  
Found 4" below surface

~~277~~ 8414

P.I. 122+41.5 = 52+53.7  
R.R. spl. on & R/W  
End Sec. B

~~275~~ 8413

9

FOUND 12/13/68  
ASH & CROW

P.I. 130+63.3  
Hinge Nail on & R/W  
1" below surface  
start sec. Melmore (Pt)

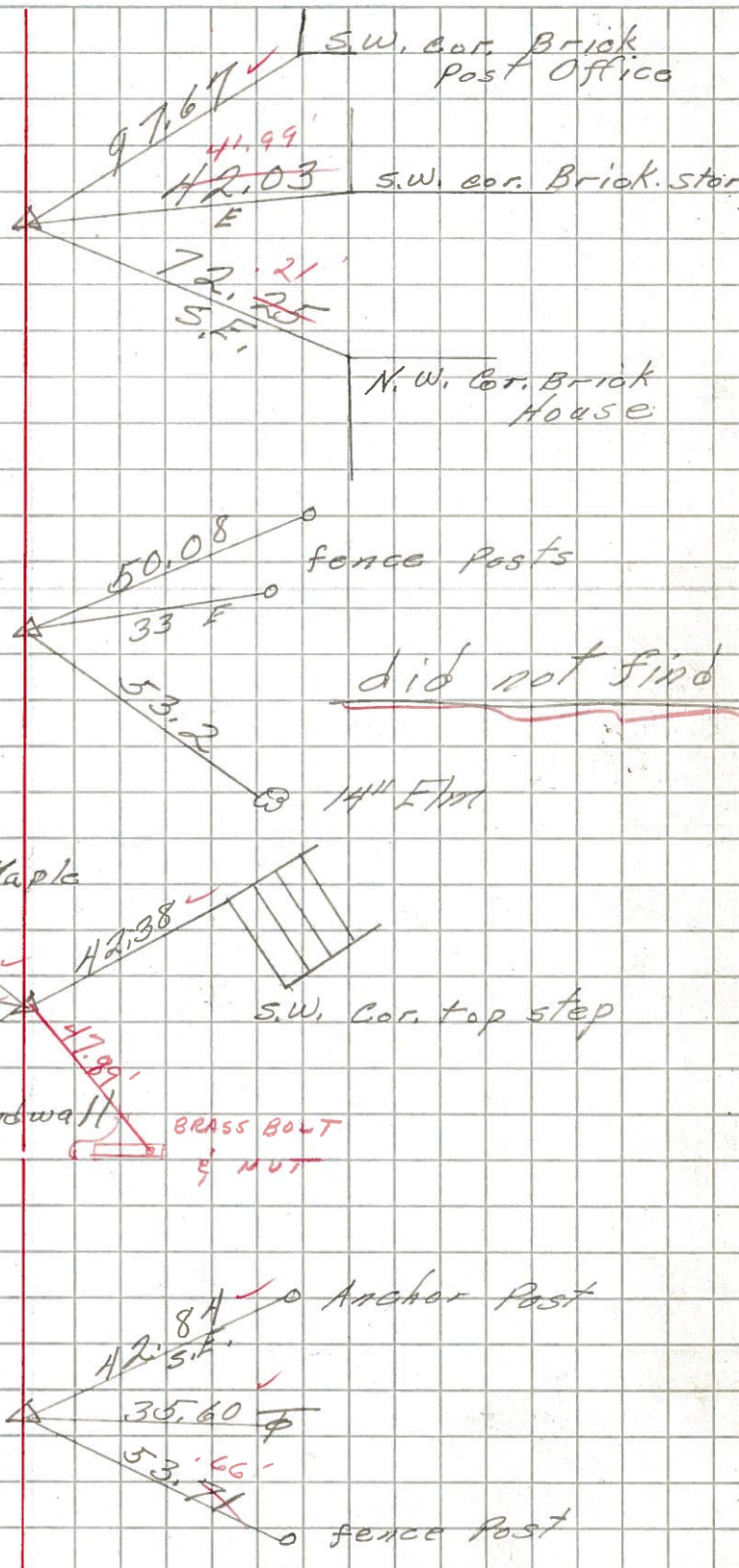
~~276~~ 8412

6

FOUND 12/13/68  
ASH & CROW

P.I. 101+32.5  
R.R. spl. on & R/W  
1 1/2" below surface  
101+32.5 = 31+44.7 Sec B

~~274~~ 8411



PERSONNEL TITLE PERSONNEL TITLE

COUNTY Seneca

DATE 12-21-65

S. R. 67

WEATHER

SEC.

TEMP.

DESCRIPTION

LEFT

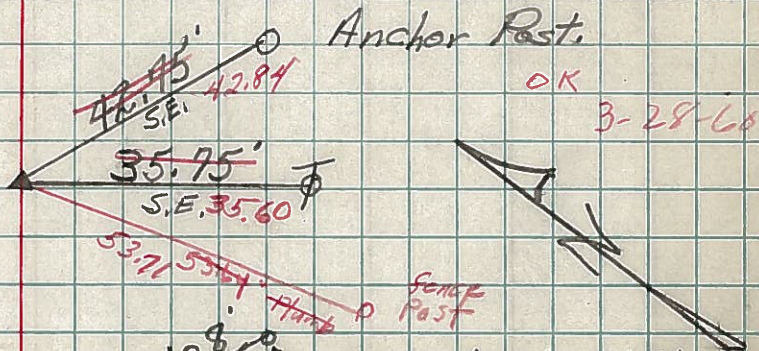
CENTER LINE

RIGHT

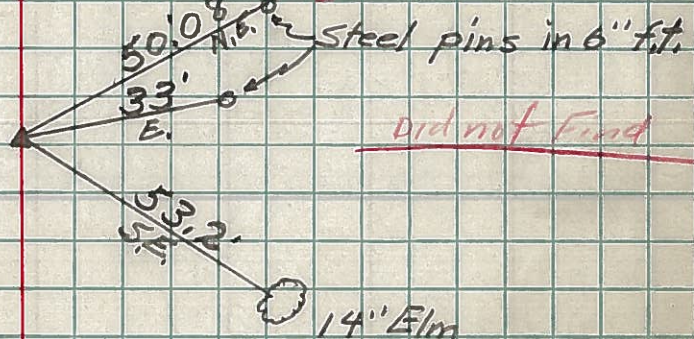
JOB NO.

6

Sta. 101+32.5  
R.R. Spike end of R/W  
101+32.5 = 31+44.7 Sec. B.  
1 1/2" 274

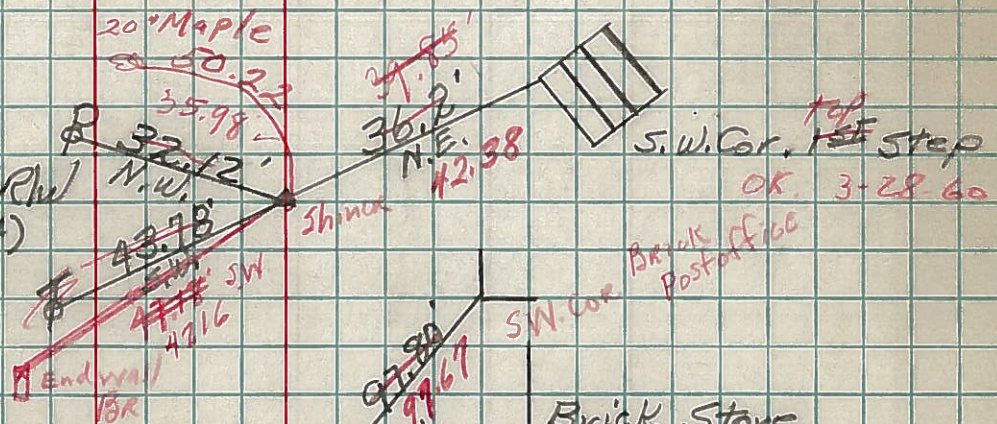


Sta. 122+41.5  
R.R. Spike end of R/W  
122+41.5 = 52+53.7  
End of Sec. B.  
275



9

Sta. 130+63.3  
R.R. Spike end of R/W  
Start Sec. Melmore (Pt)  
Hinge Nail 1" 276



10

Sta. 134+81.1  
R.R. Spike end of R/W  
Intersection of SH. 267 &  
SH. 199 in Melmore  
4" 277

