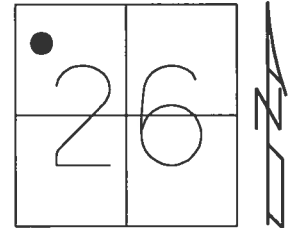


O.D.O.T. DISTRICT 2 SURVEY OFFICE (USE ONLY)

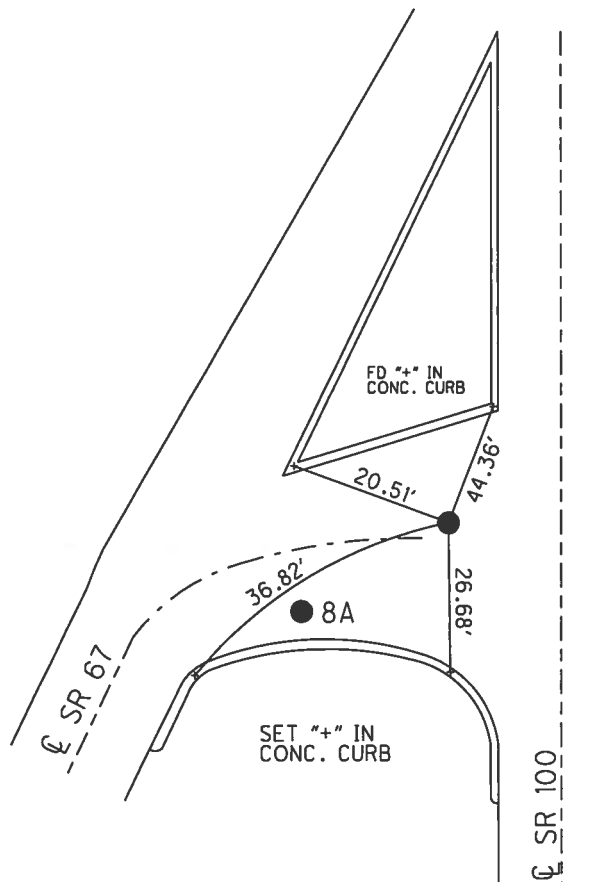
PERSONNEL \_\_\_\_\_ REFERENCE NO. 8 SHEET 9 OF 11  
 NOTES RHOADES DATE 4/3/15 ROUTE SR 67  
 H.C. O'DONNELL WEATHER CLOUDY COUNTY SENECA  
 R.C. LEU TEMP. 59° TOWNSHIP EDEN  
 \_\_\_\_\_ SECTION 26  
 \_\_\_\_\_ T 1 N R 15 E

TYPE MONUMENT P.K.SHANK  
 ON SURFACE - ~~BELOW~~ ON \_\_\_\_\_  
 LEFT - ☉ PAV'T - RIGHT - \_\_\_\_\_  
23' TO RT EDGE PAVEMENT  
 S.L.M. 122+43.79



Grid: Northing: 493779.252 Easting: 1800129.572

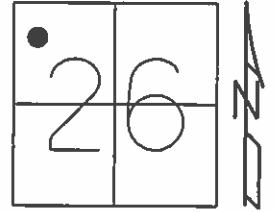
RECORD: P.I.  
 $\Delta = 26^\circ 10' \text{ LT}$   
 ☉ SURVEY  
 STA: 107+43.41  
 FD P.K./WASHER  
 5/3/94, CL  
 SET P.K./WASHER  
 9/26/94, CL  
 FD P.K.SHANK  
 GPS, REF8  
 2/19/14, TMR  
 SET MAG/WASHER  
 GPS, NEWREF8  
 7/13/15, JFO  
 FD MAG/WASHER  
 REF8  
 2/4/16, JFO



O.D.O.T. DISTRICT 2 SURVEY OFFICE (USE ONLY)

PERSONNEL \_\_\_\_\_ REFERENCE NO. 8 SHEET 9 OF 11  
 NOTES RHOADES DATE 4/3/15 ROUTE SR 67  
 H.C. O'DONNELL WEATHER CLOUDY COUNTY SENECA  
 R.C. LEU TEMP. 59° TOWNSHIP EDEN  
 \_\_\_\_\_ SECTION 26  
 \_\_\_\_\_ T 1 N R 15 E

TYPE MONUMENT P.K.SHANK  
 ON SURFACE - ~~BELOW~~ ON \_\_\_\_\_  
 LEFT - ☉ PAV'T - RIGHT - \_\_\_\_\_  
23' TO RT EDGE PAVEMENT  
 S.L.M. 122+14.33  
 Grid: Northing: 493779.247 Easting: 1800129.59

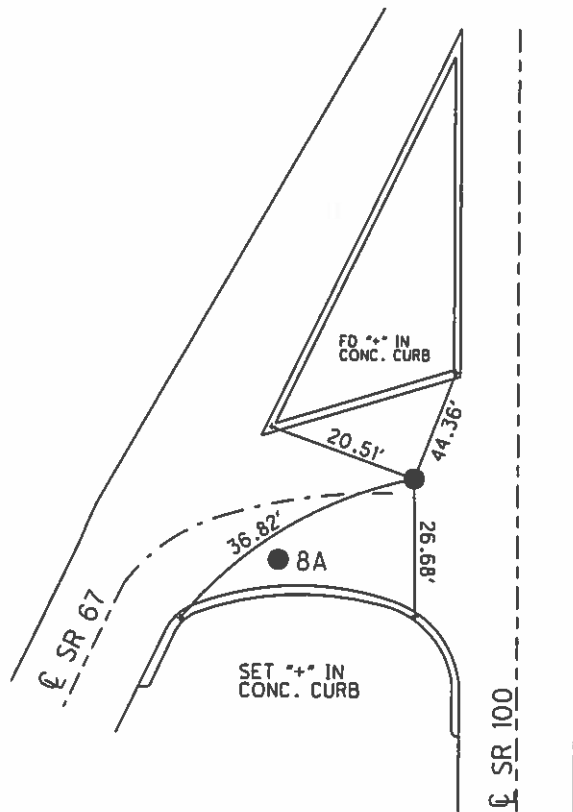


RECORD: P.I.  
 $\Delta = 26^\circ 10'$  LT  
 ☉ SURVEY  
 STA: 107+43.41

FD P.K./WASHER  
 5/3/94, CL  
 SET P.K./WASHER  
 9/26/94, CL

FD P.K.SHANK  
 GPS, REF8  
 2/19/14, TMR

SET MAG/WASHER  
 GPS, NEWREF8  
 7/13/15, JFO



# O.D.O.T. DISTRICT 2 SURVEY OFFICE

PERSONNEL \_\_\_\_\_

REFERENCE NO. B

SHEET 7 OF 7

NOTES LOENRKE

H.C. RIPPLE

R.C. BARBOUR

GEYMAN

DATE 5-3-94

WEATHER \_\_\_\_\_

TEMP. \_\_\_\_\_

ROUTE S.R. 67

COUNTY Seneca

TOWNSHIP EDEN

SECTION 26

T L N R I S E

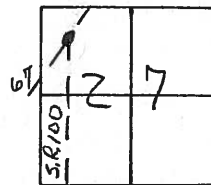
TYPE MONUMENT A = P.K/WASHER @ Surface  
B = R.R SPIKE 1" DOWN

ON SURFACE - BELOW \_\_\_\_\_

LEFT - & PAV'T. - RIGHT \_\_\_\_\_

B 8' TO RT EDGE PAVEMENT

S.L.M. \_\_\_\_\_



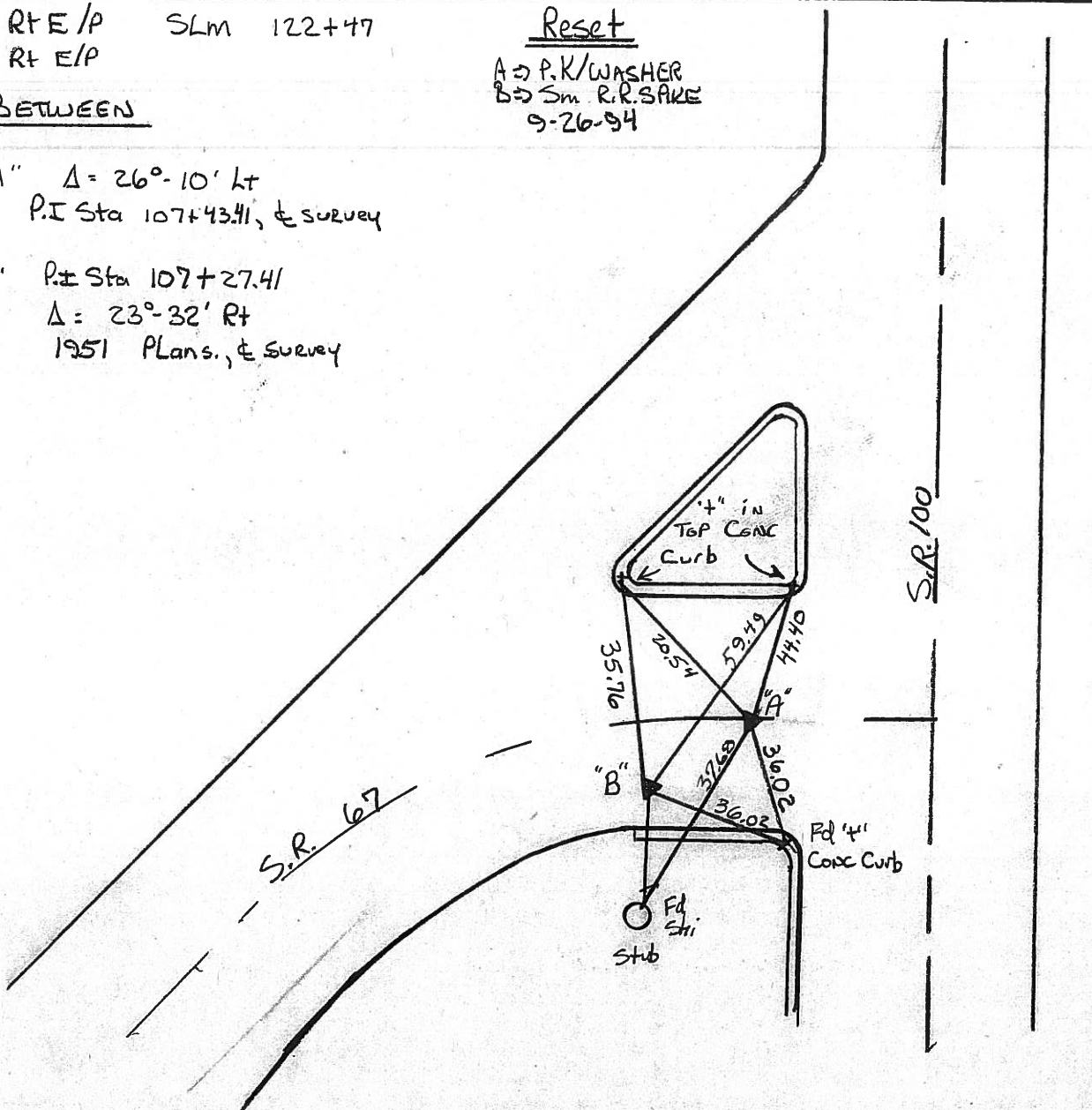
A = 23' R/E/P SLM 122+47  
 B = 8' R/E/P

16.00 BETWEEN

Reset  
 A -> P.K/WASHER  
 B -> Sm R.R SPIKE  
 9-26-94

RECORD "A"  $\Delta = 26^{\circ}-10'$  Lt  
 P.I Sta 107+43.41, & survey

RECORD "B" P.I Sta 107+27.41  
 $\Delta = 23^{\circ}-32'$  Rt  
 1951 Plans., & survey



County Seneca S.R. # 67 & 100

Date 8-3-77

Township Eden

Weather Sunny

Section 26

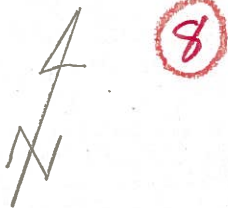
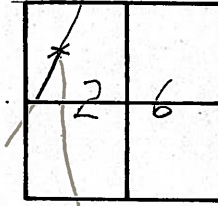
Temp. 75°

T. 1 N, R. 15 E

Personnel copy, sheet #4

S.R. # 100

8-3-77



Note: Both points are in the approach of S.R. # 67 to S.R. # 100

$\Delta = 23^\circ 32' \text{ Rt.}$  Meas. & Rec.

P. I. survey

107+27.41 meas.

set R.R. spk. (Punched)

1951 Plans

N&S top 3rd G.R.

Post S., West

side S.R. # 67

$\Delta = 26^\circ 10' \text{ Lt.}$   
 Meas. & Rec.  
 P. I. survey  
 107+43.41  
 set R.R. spk.  
 (Punched)

