

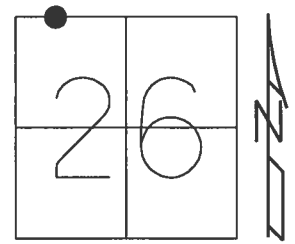
O.D.O.T. DISTRICT 2 SURVEY OFFICE (USE ONLY)

PERSONNEL _____ REFERENCE NO. 9 SHEET 11 OF 11

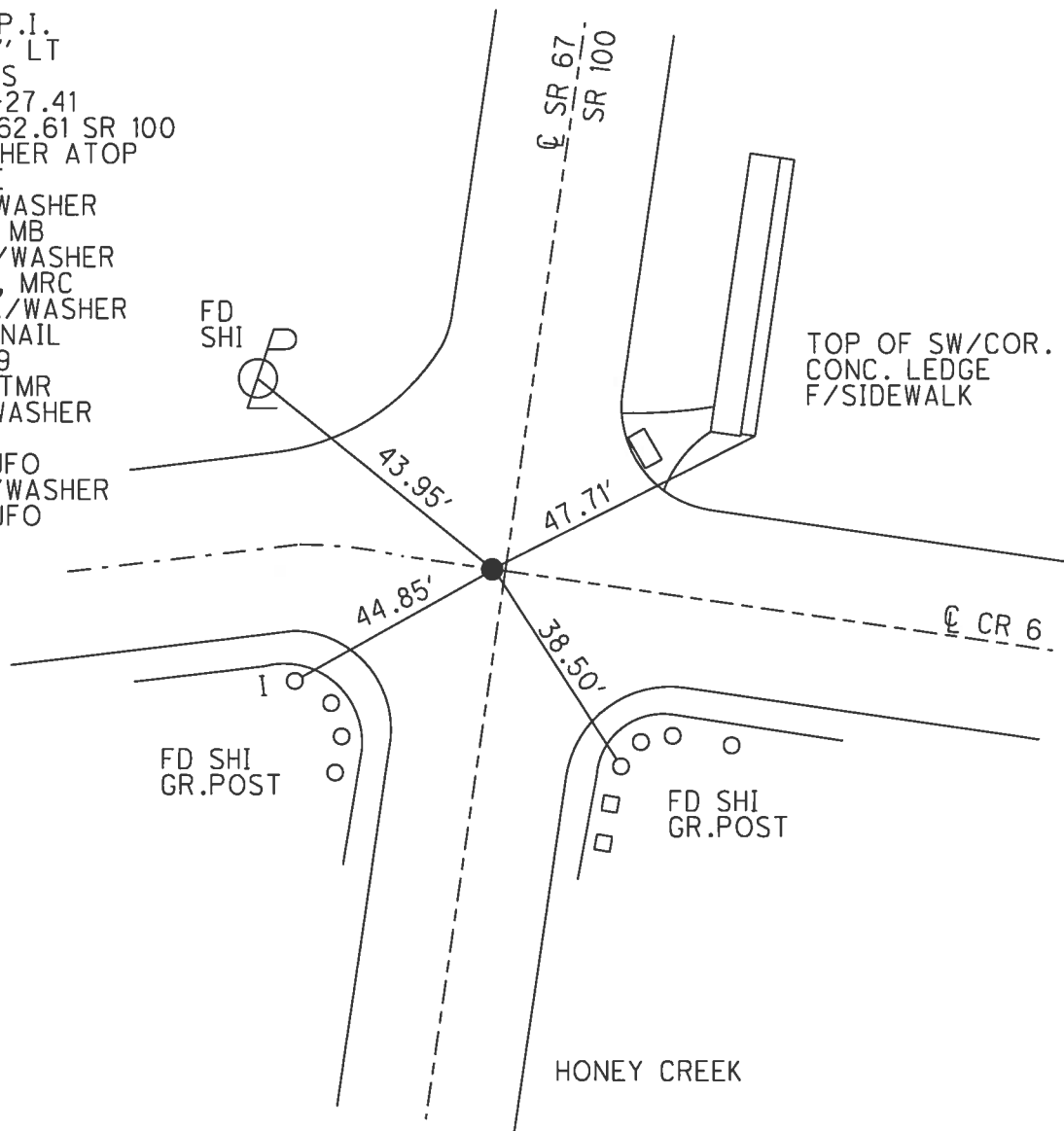
NOTES RHOADES DATE 7/12/17 ROUTE SR 67
 H.C. O'DONNELL WEATHER CLOUDY COUNTY SENECA
 R.C. RHOADES TEMP. 78° TOWNSHIP EDEN
 _____ SECTION 26
 _____ T 1 N R 15 E

TYPE MONUMENT MAG/WASHER
 ON SURFACE - ~~BELOW~~ ON _____
 LEFT - ☉ PAV'T - ~~RIGHT~~ 0.5', ± 5' S.OF ☉ WEST
 _____ TO _____ EDGE PAVEMENT
 S.L.M. 130+62.72

Grid: Northing: 494582.078 Easting: 1800291.189



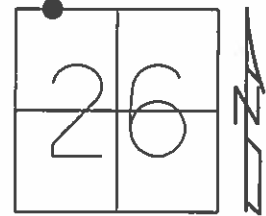
RECORD: P.I.
 $\Delta = 01^\circ 57' \text{ LT}$
 1951 PLANS
 STA: 107+27.41
 STA: 115+62.61 SR 100
 P.K./WASHER ATOP
 R.R.SPIKE
 FD P.K./WASHER
 7/21/00, MB
 SET P.K./WASHER
 10/17/00, MRC
 DNF, P.K./WASHER
 SET MAG NAIL
 GPS, REF9
 2/21/14, TMR
 FD MAG/WASHER
 REF9
 2/4/16, JFO
 SET MAG/WASHER
 11/9/17, JFO



O.D.O.T. DISTRICT 2 SURVEY OFFICE (USE ONLY)

PERSONNEL _____ REFERENCE NO. 9 SHEET 11 OF 11
 NOTES ROUSOS DATE 2/21/14 ROUTE SR 67
 H.C. ROUSOS WEATHER CLOUDY COUNTY SENECA
 R.C. RHOADES TEMP. 38° TOWNSHIP EDEN
 _____ SECTION 26
 _____ T 1 N R 15 E

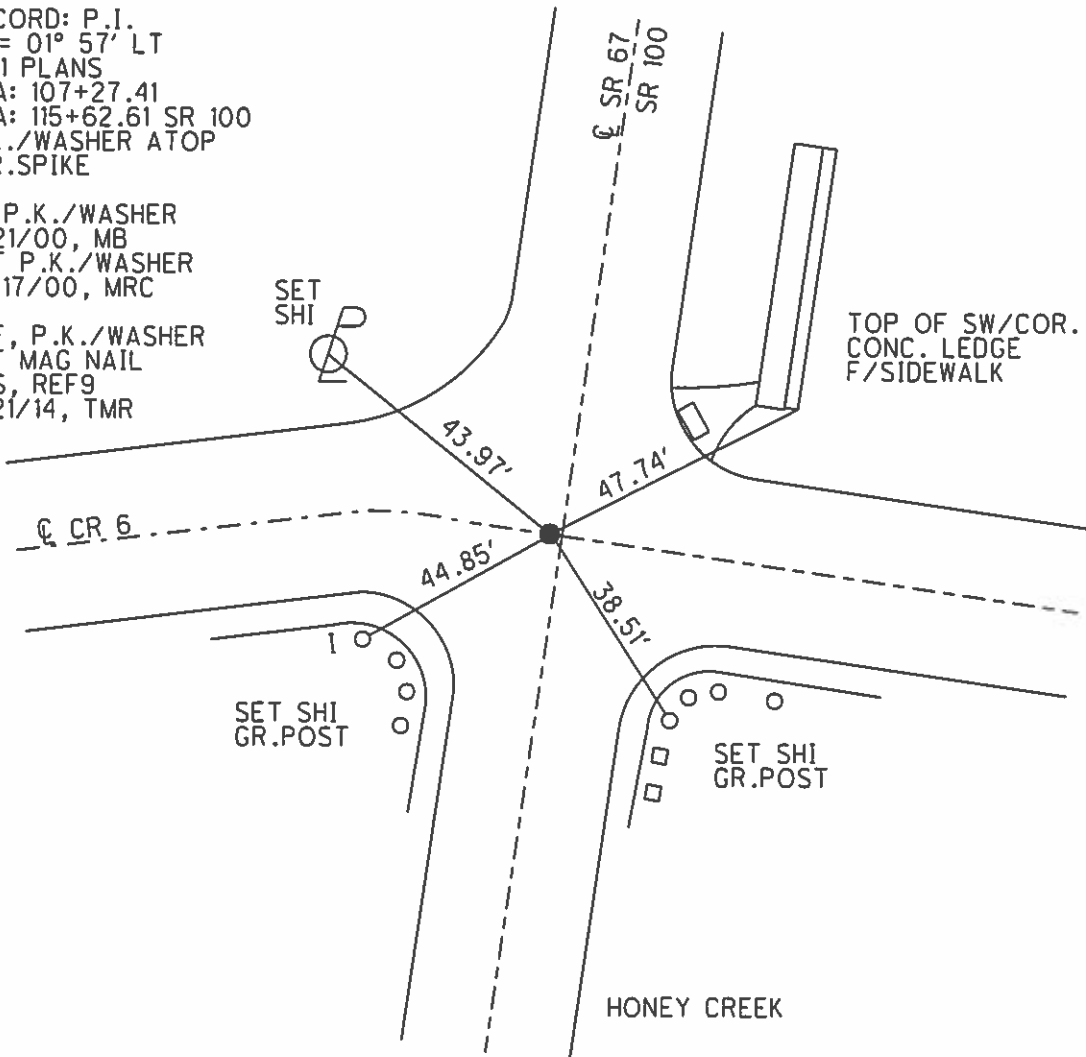
TYPE MONUMENT MAG NAIL
 ON SURFACE - ~~BELOW~~ ON _____
 LEFT - ☉ PAV'T - ~~RIGHT~~ 0.5', ± 5' S.OF ☉ WEST
 _____ TO _____ EDGE PAVEMENT
 S.L.M. 130+33.23
 Grid: Northing: 494582.057 Easting: 1800291.155



RECORD: P.I.
 $\Delta = 01^\circ 57' \text{ LT}$
 1951 PLANS
 STA: 107+27.41
 STA: 115+62.61 SR 100
 P.K./WASHER ATOP
 R.R.SPIKE

FD P.K./WASHER
 7/21/00, MB
 SET P.K./WASHER
 10/17/00, MRC

DNF, P.K./WASHER
 SET MAG NAIL
 GPS, REF9
 2/21/14, TMR



County Seneca S.R. 67 & 100

Date 8-3-77

Township Eden

Weather Sunny

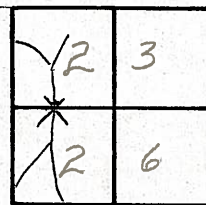
Section 23 & 26

Temp. 75°

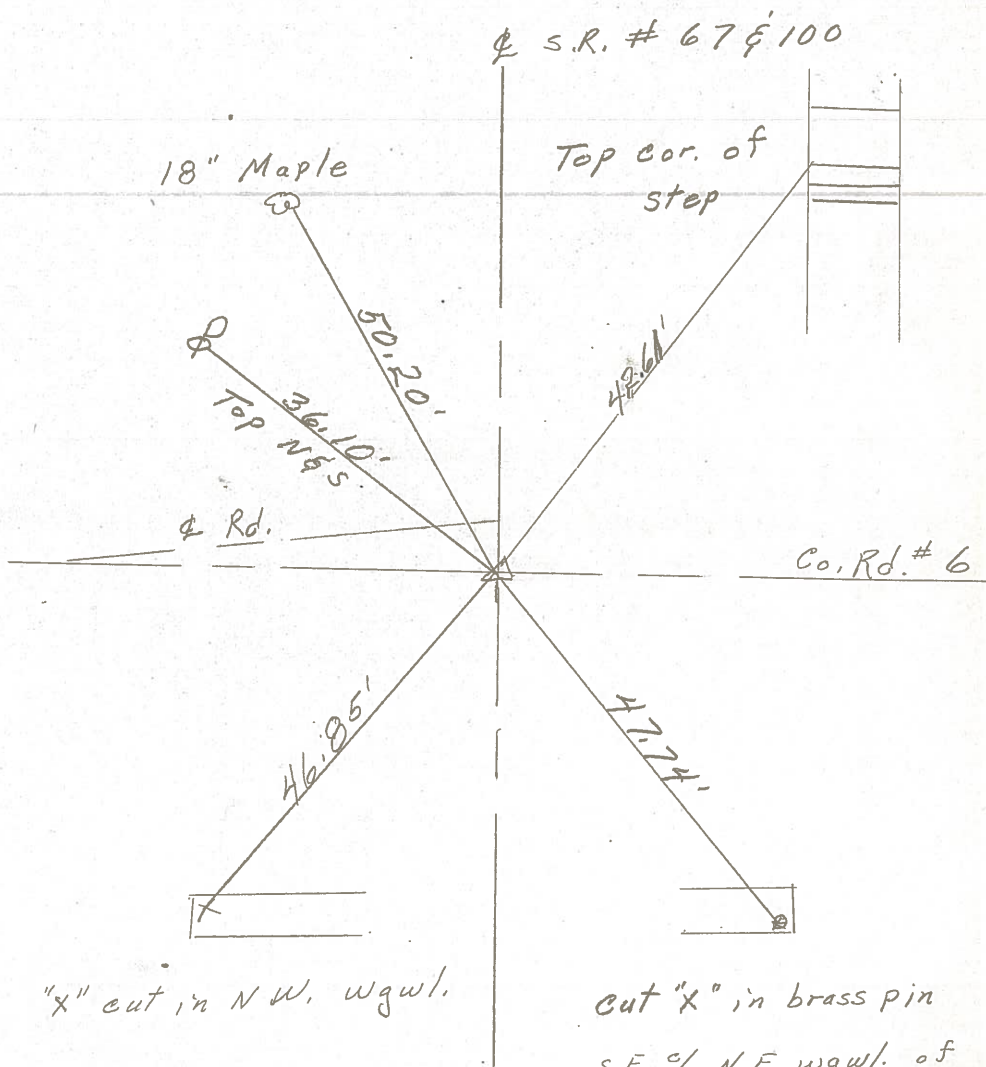
T. N, R. E

Personnel copy i sheet

5 S.R. # 100



9



P.I.

115 + 62.61 Meas-

Fd. R.R. spk. 1"

below surface

1951 Plans

"x" cut in NW. wgw.

cut "x" in brass pin
S.E. of N.E. wgw. of
Br. # Sen 67-0243

PERSONNEL TITLE PERSONNEL TITLE

COUNTY Seneca DATE 12-21-65

S. R. # 67 WEATHER

SEC TEMP

DESCRIPTION LEFT CENTER LINE RIGHT JOB NO.

10

FOUND 12/13/68
ASH & CREW

P.I. 134 + 81.1
R.R. on & R/W
Inter section of S.H. 268
& S.H. #199 in Melmore
Found 4" below surface

~~8417~~ 8414

P.I. 122 + 41.5 = 52 + 53.7
R.R. spk. on & R/W
End Sec. B

~~8415~~ 8413

9

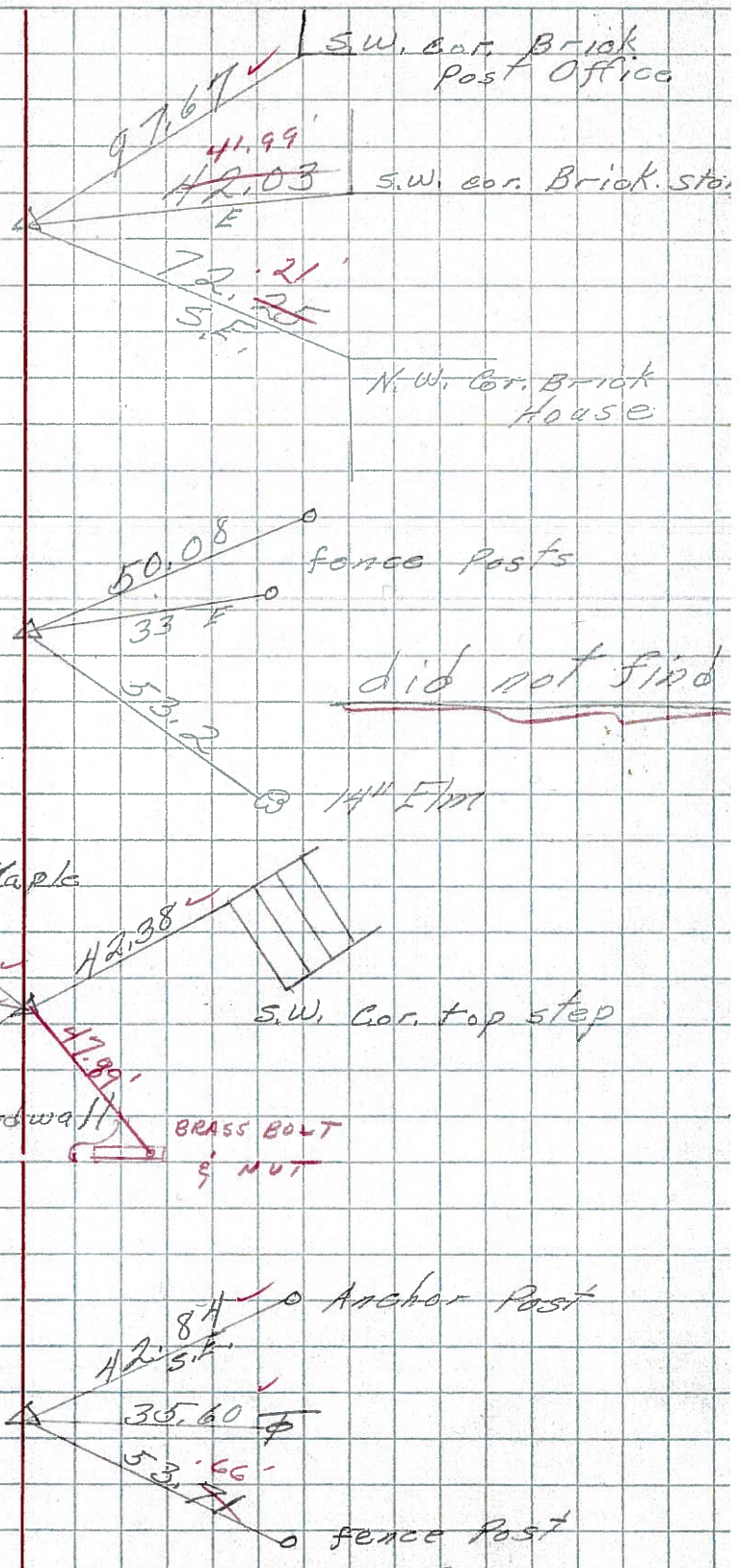
FOUND 12/13/68
ASH & CREW
P.I. 130 + 63.3
Hinge Nail on & R/W
1" below surface
start sec. Melmore (Pt)

~~8416~~ 8412

6

FOUND 12/13/68
ASH & CREW
P.I. 101 + 32.5
R.R. spk. on & R/W
1 1/2" below surface
101 + 32.5 = 31 + 44.7 sec B

~~8418~~ 8411



PERSONNEL TITLE PERSONNEL TITLE

COUNTY Seneca

DATE 12-21-65

S. R. 67

WEATHER

SEC.

TEMP.

DESCRIPTION

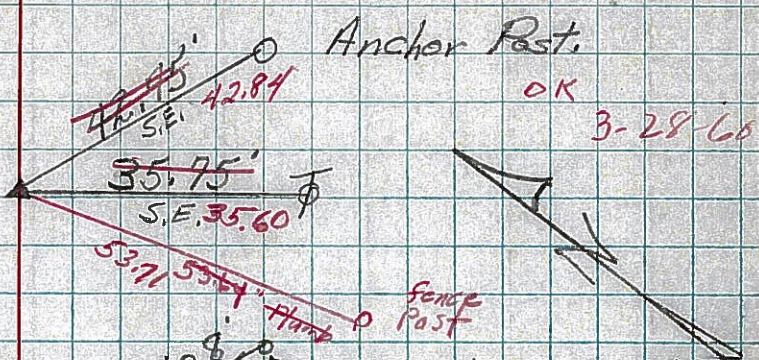
LEFT

CENTER LINE

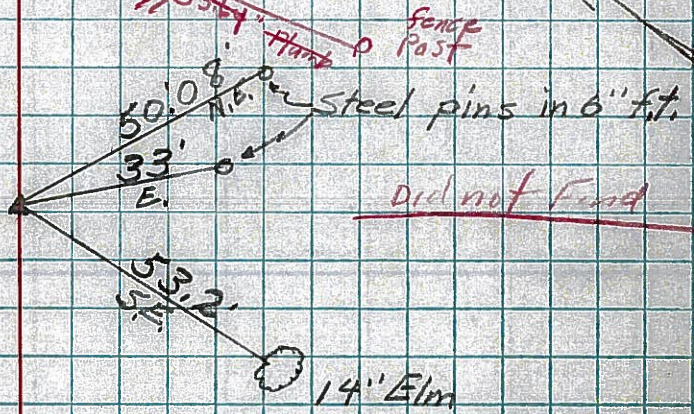
RIGHT

JOB NO.

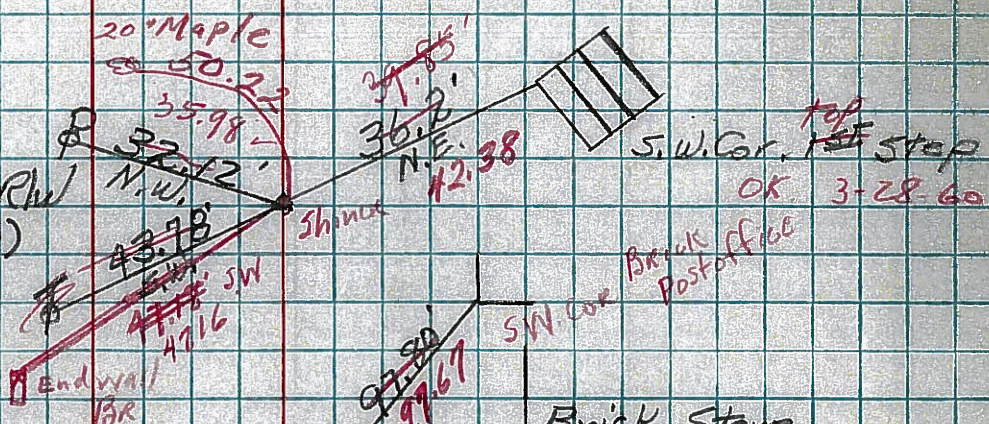
⑥ Sta. 101+32.5
 R.R. Spike on ϕ of R/W
 $101+32.5 = 31+44.7$ Sec. B.
 1 1/2" **274**



Sta. 122+41.5
 R.R. Spike on ϕ of R/W
 $122+41.5 = 52+53.7$
 End of Sec. B.
275



⑨ Sta. 130+63.3
 R.R. Spike on ϕ of R/W
 Start Sec. Melmore (24)
 Hinge Nail 1" **276**



⑩ Sta. 134+81.1
 R.R. Spike on ϕ of R/W
 Intersection of SH. 267
 SH. 199 in Melmore
 4" **277**

