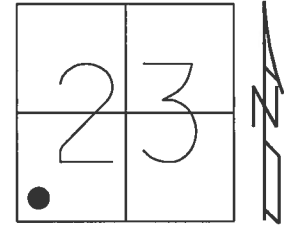


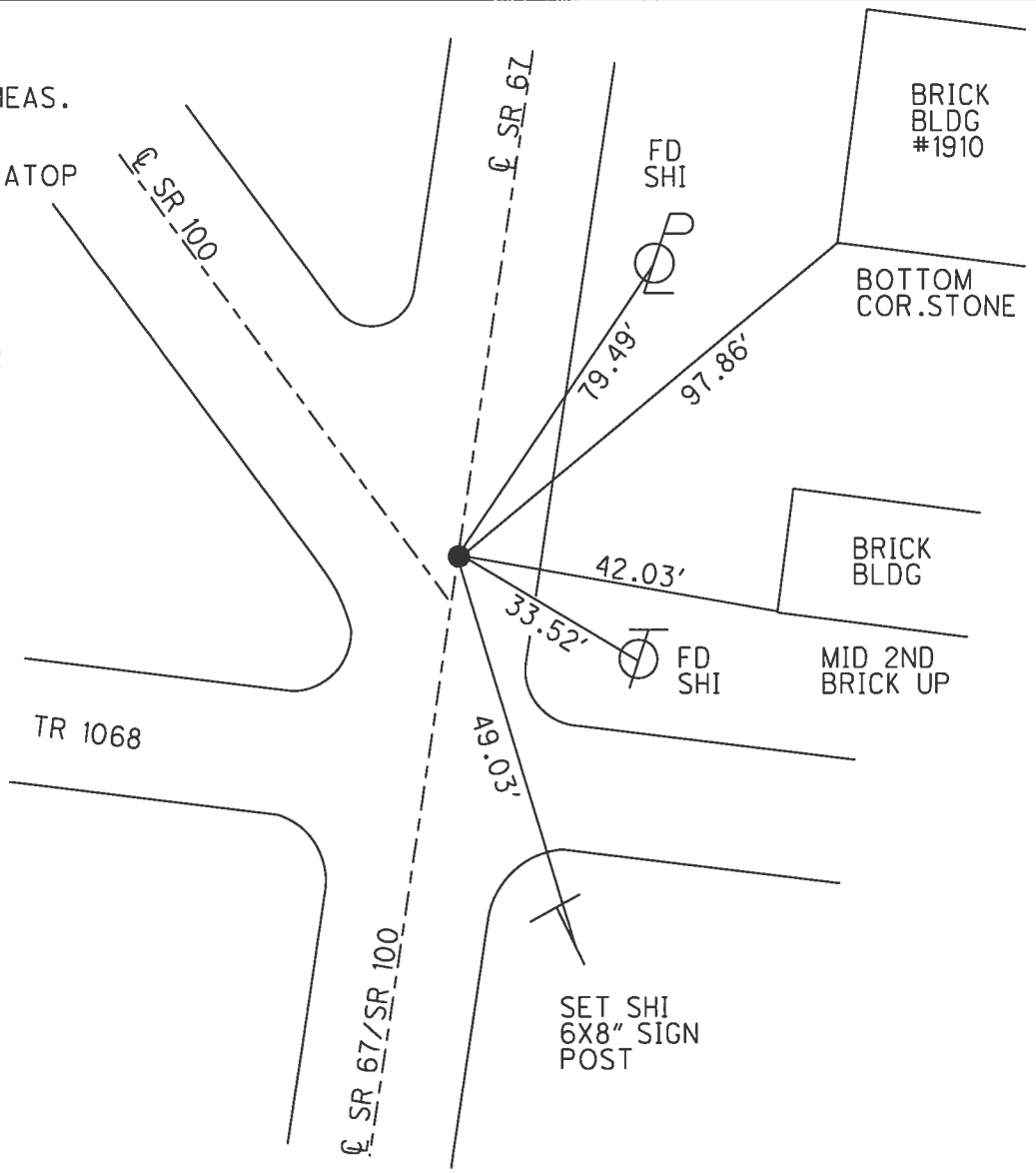
O.D.O.T. DISTRICT 2 SURVEY OFFICE (USE ONLY)

PERSONNEL \_\_\_\_\_ REFERENCE NO. 10 SHEET 1 OF 25  
 NOTES RHOADES DATE 7/12/17 ROUTE SR 67  
 H.C. O'DONNELL WEATHER CLOUDY COUNTY SENECA  
 R.C. RHOADES TEMP. 79° TOWNSHIP EDEN  
 \_\_\_\_\_ SECTION 23  
 \_\_\_\_\_ T 1 N R 15 E

TYPE MONUMENT P.K./WASHER  
~~ON SURFACE~~ - BELOW 4"  
 LEFT - ☉ PAV'T - RIGHT ON  
- TO - EDGE PAVEMENT  
 S.L.M. 134+82.37  
 Grid: Northing: 494996.062 Easting: 1800359.905



RECORD: P.I.  
 1951 PLANS  
 STA. 119+82.24 MEAS.  
 FD R.R.SPIKE  
 6" DOWN  
 SET BOLT SPIKE ATOP  
 R.R.SPIKE  
 7/11/78  
 FD P.K./WASHER  
 4" DOWN  
 REF10  
 2/4/16, JFO  
 SET MAG/WASHER  
 11/9/17, JFO



County Seneca S.R. 67 & 100

Date 8-3-77

Township Eden

Weather Sunny

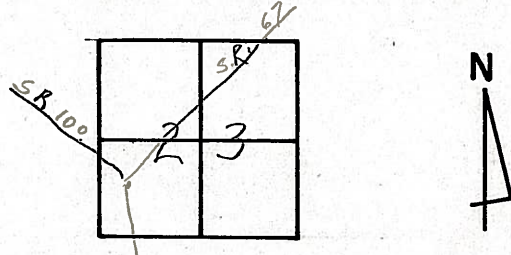
Section 23

Temp. 75°

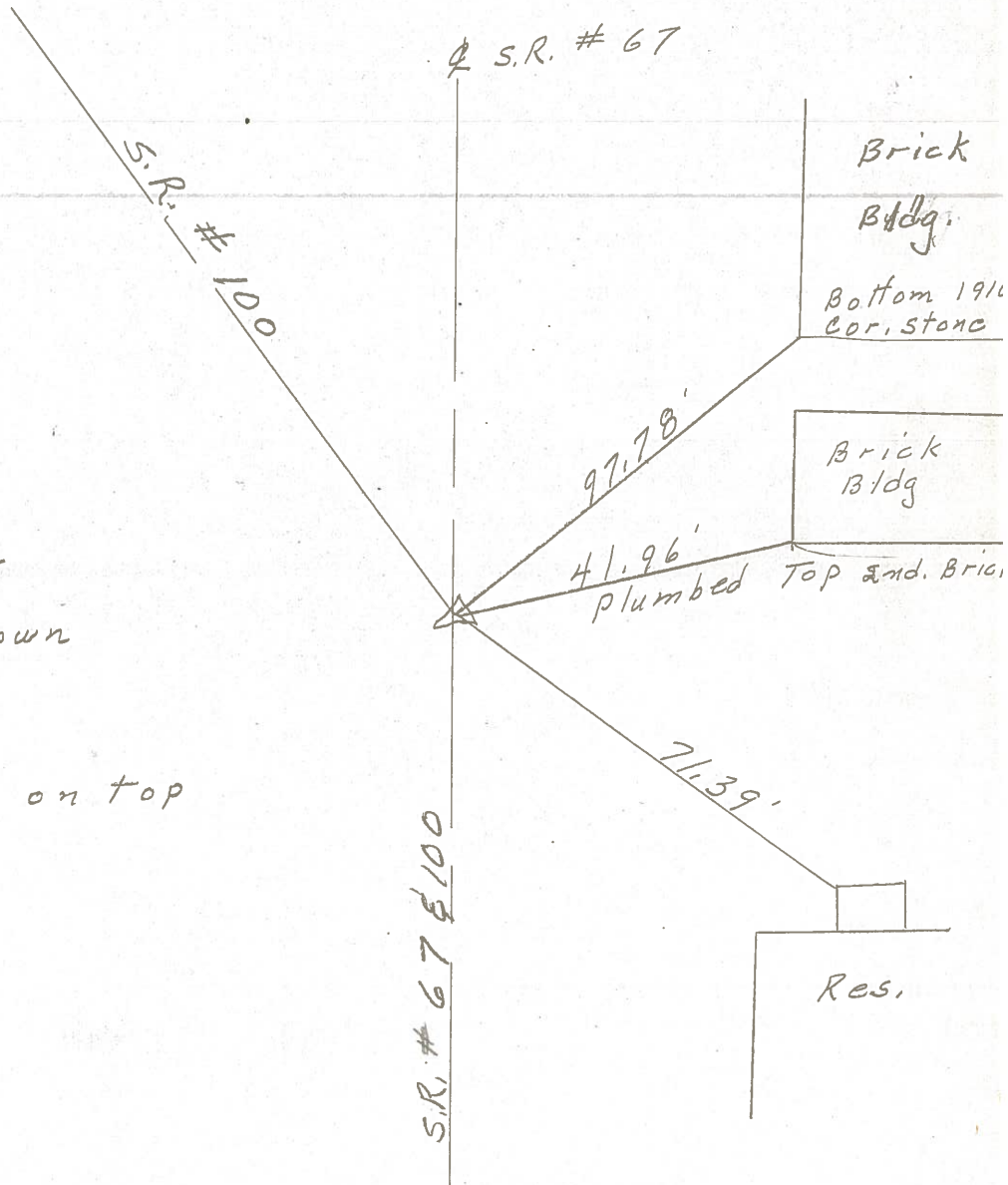
T1N, R15E

Personnel Copy: sheet #5

S.R. # 100



10



P. I.

119 + 82.24 Meas.

Fd. R. R. spk. 6" down

1951 Plans

Reset bolt spk. on top

7-11-78

PERSONNEL TITLE PERSONNEL TITLE

COUNTY Seneca DATE 12-21-65

S. R. # 67 WEATHER

SEC. TEMP.

DESCRIPTION LEFT CENTER LINE RIGHT JOB NO.

10

FOUND 12/13/68  
ASH & Grew

P.I. 134+81.1  
R.R. on & R/W  
Inter section of S.H. 268  
& S.H. #199 in Melmore  
Found 4" below surface

~~8414~~ 8414

P.I. 122+41.5 = 52+53.7  
R.R. spk. on & R/W  
End Sec. B

~~8413~~ 8413

9

FOUND 12/13/68  
ASH & Grew

P.I. 130+63.3  
Hinge Nail on & R/W  
1" below surface  
start sec. Melmore (Pt)

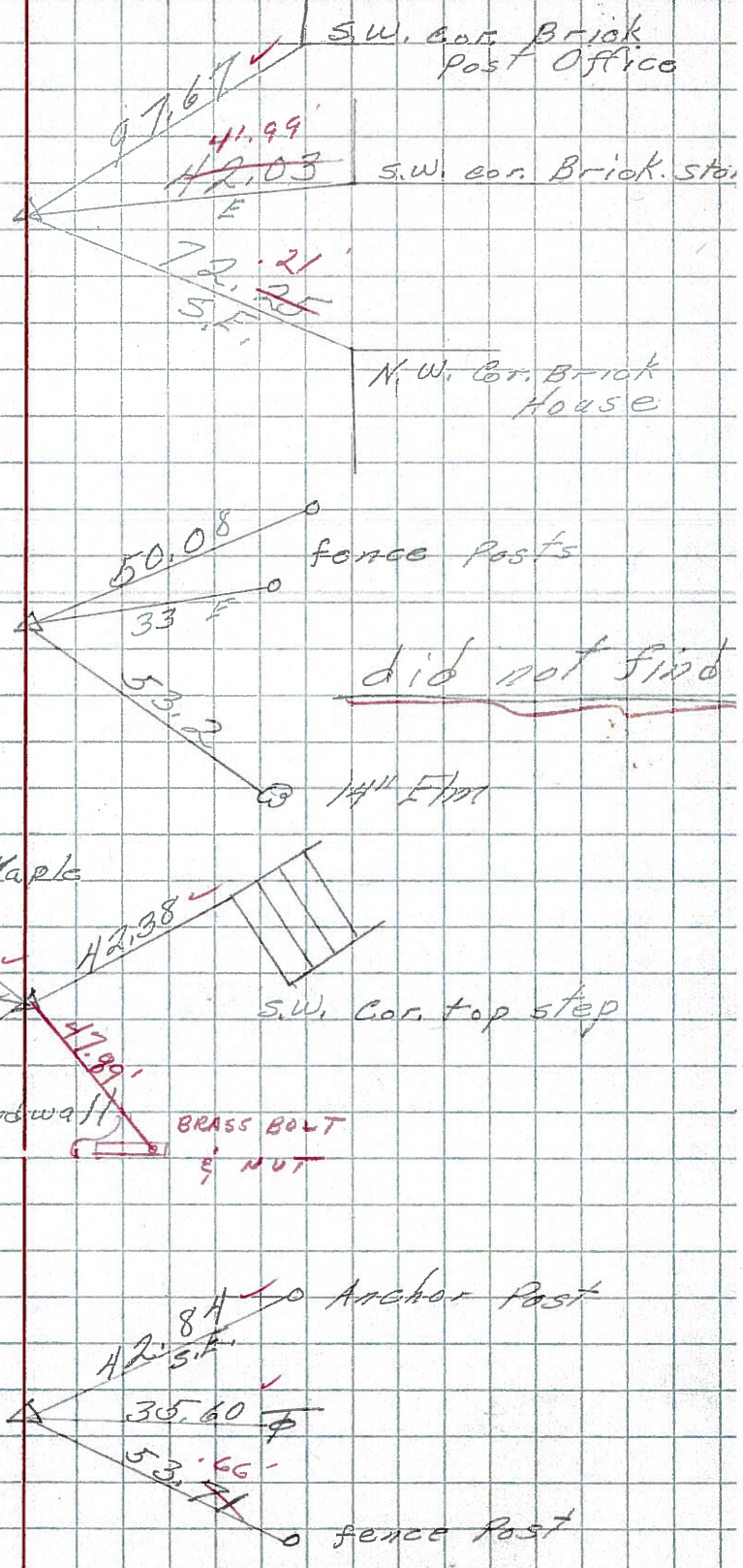
~~8412~~ 8412

6

FOUND 12/13/68  
ASH & Grew

P.I. 101+32.5  
R.R. spk. on & R/W  
1 1/2" below surface  
101+32.5 = 31+44.7 Sec B

~~8411~~ 8411



PERSONNEL TITLE PERSONNEL TITLE

COUNTY Seneca

DATE 12-21-65

S. R. 67

WEATHER

SEC.

TEMP.

DESCRIPTION

LEFT

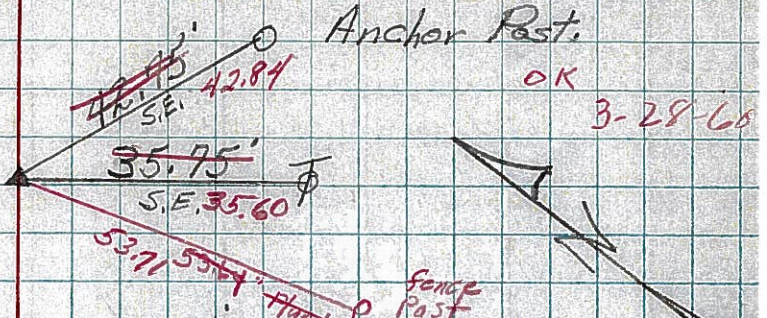
CENTER LINE

RIGHT

JOB NO.

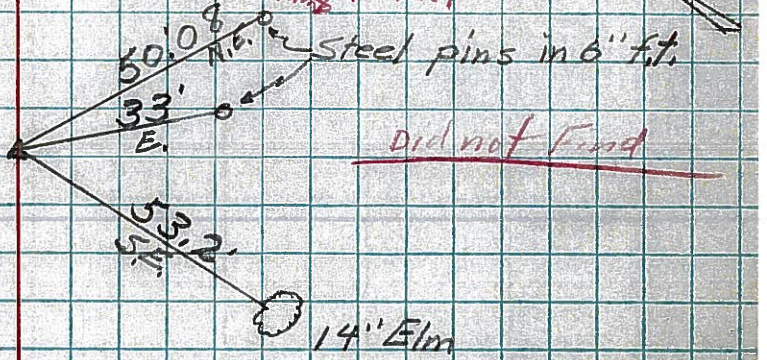
6

Sta. 101+32.5  
R.R. Spike on  $\phi$  of R/W  
101+32.5 = 31+44.7 Sec. B.  
1 1/2" 274



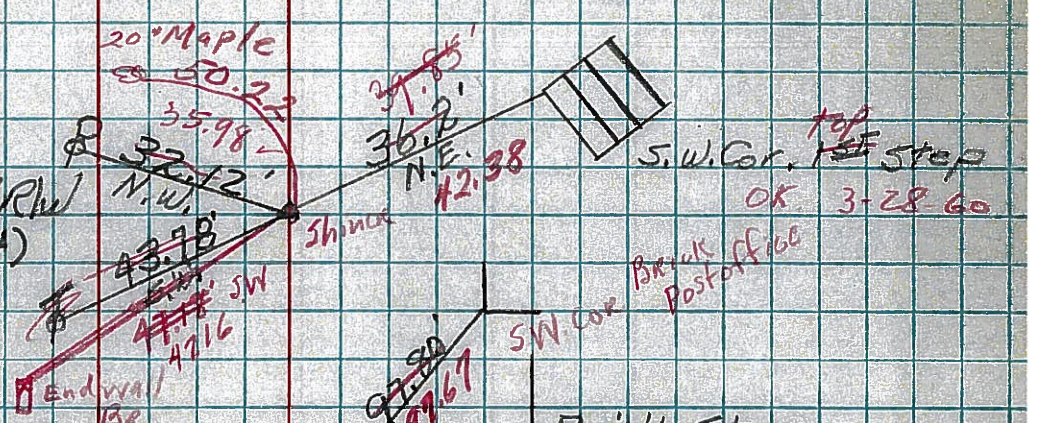
7

Sta. 122+41.5  
R.R. Spike on  $\phi$  of R/W  
122+41.5 = 52+53.7  
End of Sec. B.  
275



9

Sta. 130+63.3  
R.R. Spike on  $\phi$  of R/W  
Start Sec. Melmore (PA)  
Hinge Nail 1" 276



10

Sta. 134+81.1  
R.R. Spike on  $\phi$  of R/W  
Intersection of SH. 267  
SH. 199 in Melmore  
4" 277

