

O.D.O.T. DISTRICT 2 SURVEY OFFICE (USE ONLY)

PERSONNEL _____ REFERENCE NO. 11 AB SHEET 2 OF 25

NOTES RHOADES DATE 7/12/17 ROUTE SR 67
 H.C. O'DONNELL WEATHER CLOUDY COUNTY SENECA
 R.C. RHOADES TEMP. 82° TOWNSHIP EDEN
 _____ SECTION 23
 _____ T 1 N R 15 E

TYPE MONUMENT MAG NAIL SHANK

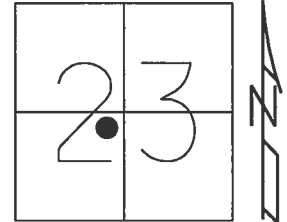
ON SURFACE - ~~BELOW~~ ON _____

LEFT - ☉ PAV'T - ~~RIGHT~~ 1.5'

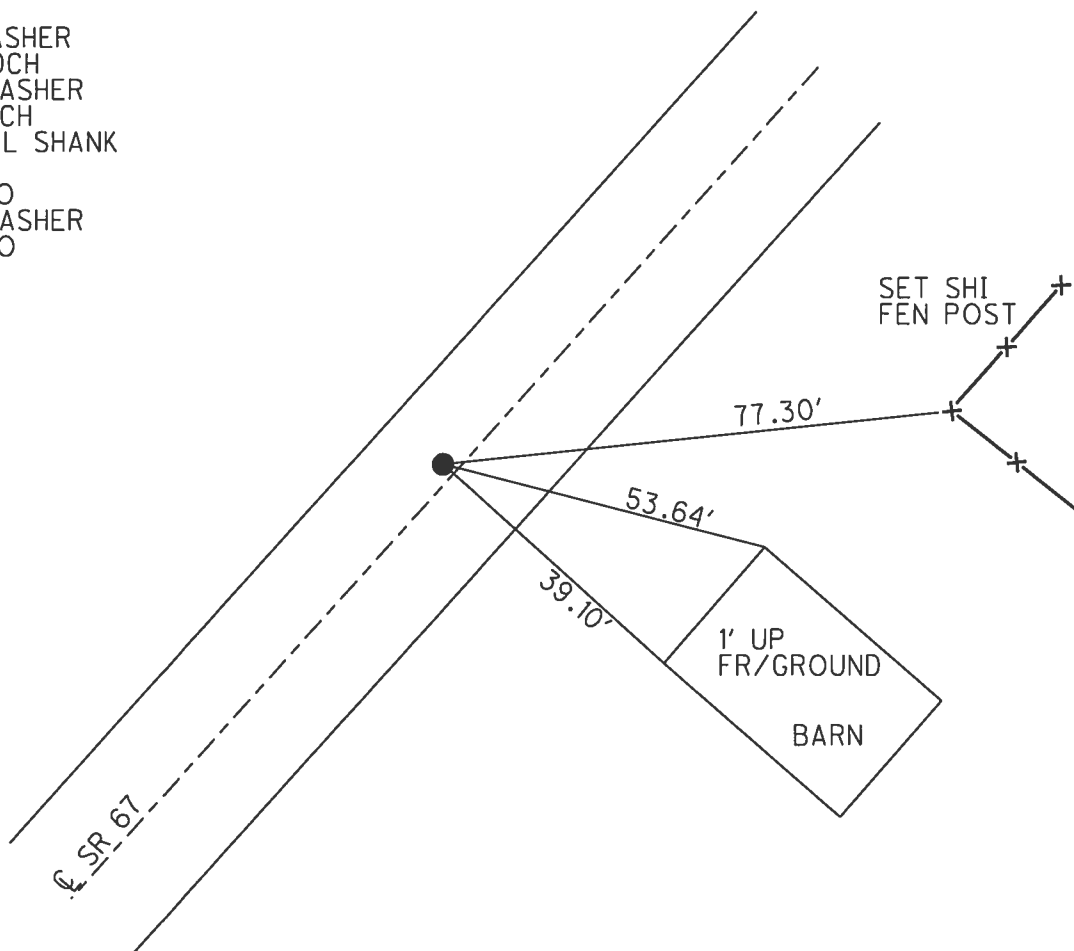
- TO - EDGE PAVEMENT

S.L.M. 158+36.72

Grid: Northing: 496940.197 Easting: 1801521.622



RECORD: P.I.
 STA. 158+37.70
 FD P.K./WASHER ATOP
 P.K./WASHER ATOP
 R.R. SPIKE
 FD P.K./WASHER
 5/29/02, DCH
 SET MAG/WASHER
 9/14/02, DCH
 FD MAG NAIL SHANK
 REFAB11
 2/4/16, JFO
 SET MAG/WASHER
 11/9/17, JFO



O.D.O.T. DISTRICT 2 SURVEY OFFICE

PERSONNEL

REFERENCE NO. 11

SHEET 1 OF 10

NOTES ROUSOS

H.C. HOMAN

R.C. MICHALAK

DATE 5/29/02

WEATHER HOT

TEMP. 74°

ROUTE 67

COUNTY SENECA

TOWNSHIP EDEN

SECTION 23

T 1 N R 15 E

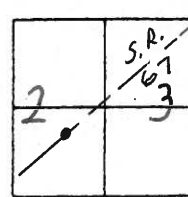
TYPE MONUMENT PK & WASHER

ON SURFACE - BELOW ON SURFACE

LEFT - & PAV'T. - RIGHT 1/2' Lt. & PAVT.

TO EDGE PAVEMENT

S.L.M. STA 150+86

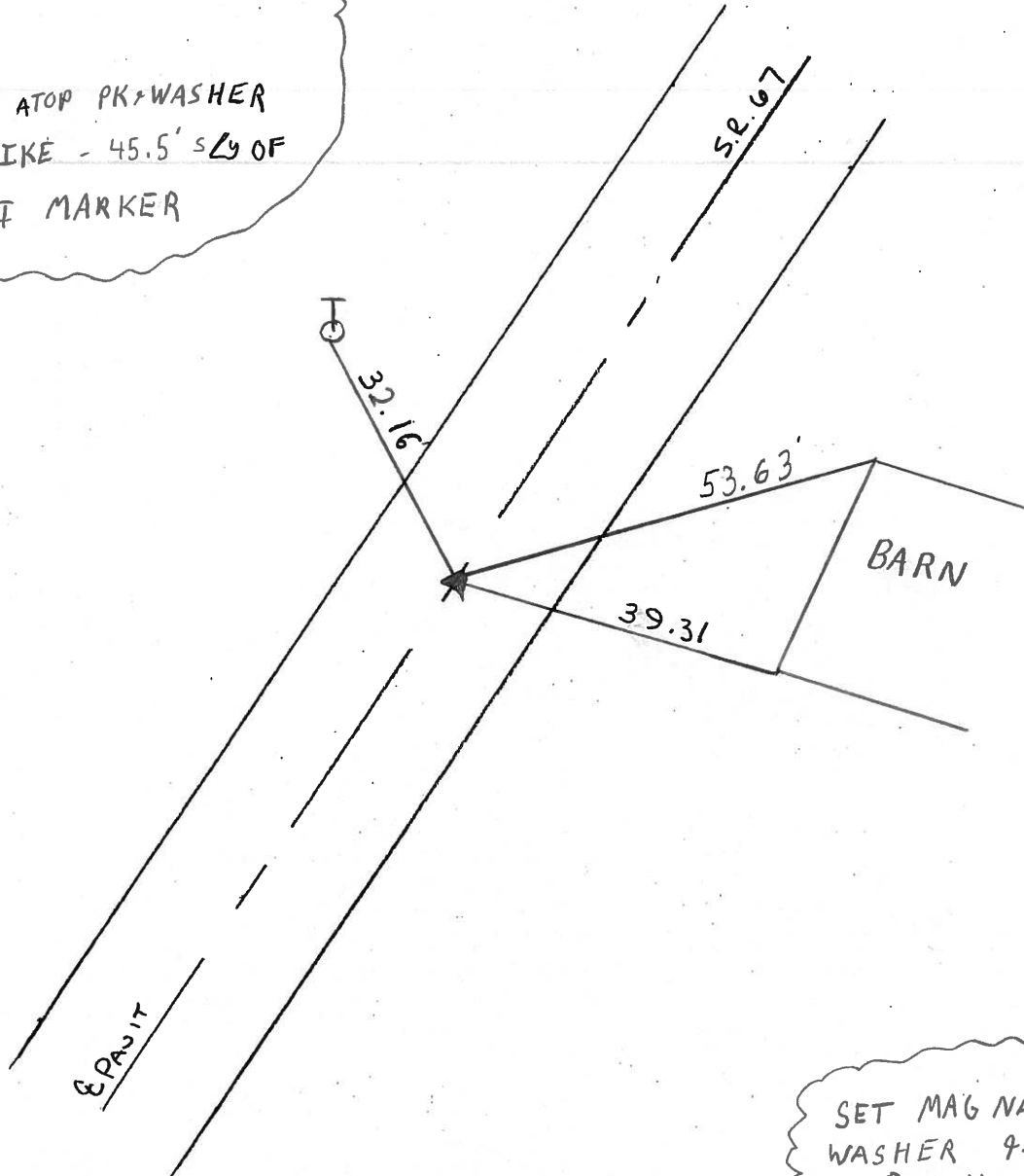


P.I.

RECORD:

158+37.70

PK & WASHER ATOP PK & WASHER
ATOP R.R. SPIKE - 45.5' SLY OF
SEN 67 3MI MARKER



SET MAG NAIL &
WASHER 9-14-02
D.C.H.

Resurveyed 2002

O.D.O.T. DISTRICT 2 SURVEY OFFICE

PERSONNEL

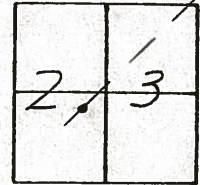
NOTES Cronin
H.C. Ripple
R.C. Geyman
Barbour

REFERENCE NO. 11
DRAWN 11/12/86
DATE 11/10/86
WEATHER sunny
TEMP. 46°

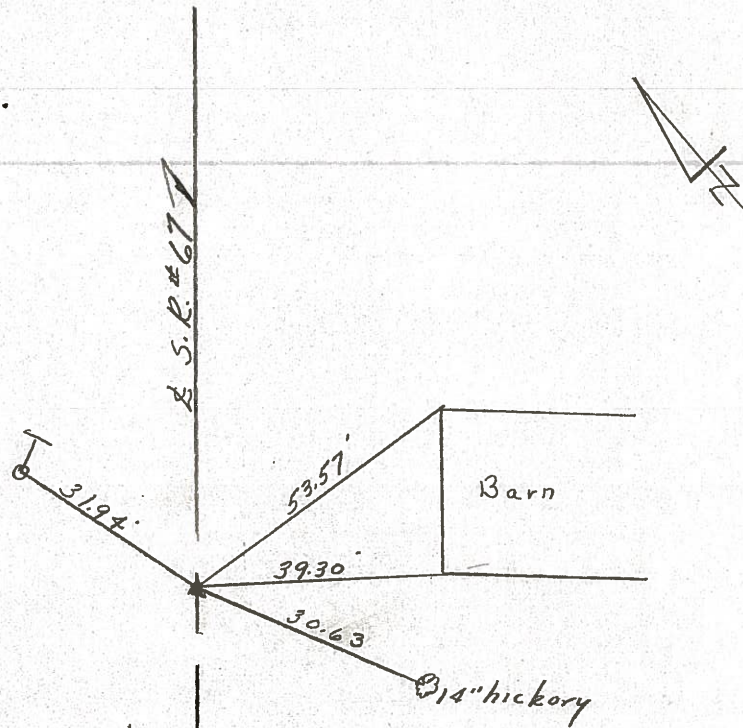
SHEET 12 OF

ROUTE #67
COUNTY Seneca
TOWNSHIP Eden
SECTION 23
T 1 N R 15 E

TYPE MONUMENT P.K. & washer
ON SURFACE - BELOW on surface
LEFT - € PAV'T. - RIGHT 1/2 Lt. & Pavt.
TO EDGE PAVEMENT
S.L.M.



P.I.
158+37.70
P.K. & washer atop P.K. & washer
atop P.K. spike - 45.85 sly of
Sen. 67 3 mi marker



County SENECA S.R. #67

Date 8/10/81

Township EDEN

Weather SUNNY

Section 23

Temp. 72°

T/LN, RISE

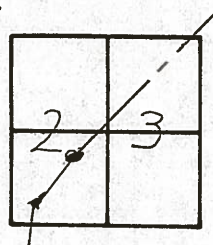
Personnel CRANIN

RIPPLE

GEYMAN

MOSSER

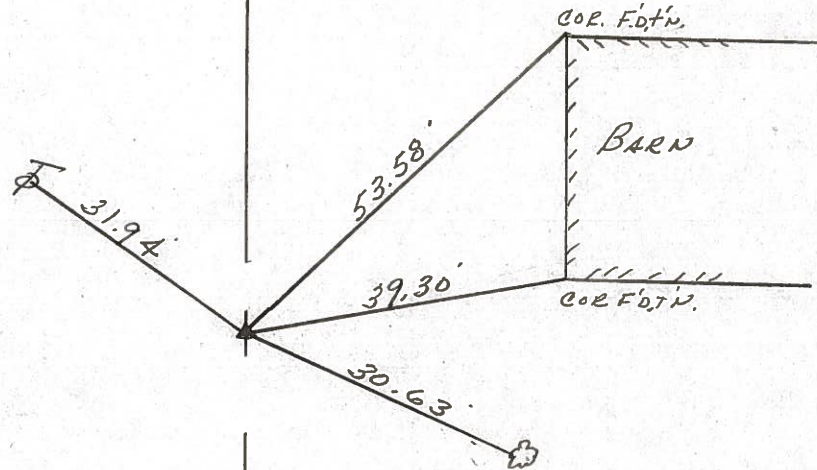
BARBOUR



~~#11A~~



P.I.
158+37.7
 Reset P.K. & washer at top
 P.R. spike 7" below surface
1 1/2' ± Lt. of & Paint.
45.5' So. of Sen. 67 3 Mi. Marker



S.R. #67

O.D.O.T. DISTRICT 2 SURVEY OFFICE

SHEET _____ OF _____

County SENECA S.R. 67

Date 6-16-81

Township EDON

Weather OVERCAST

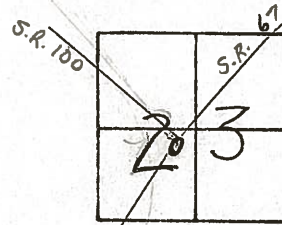
Section 23

Temp. 75

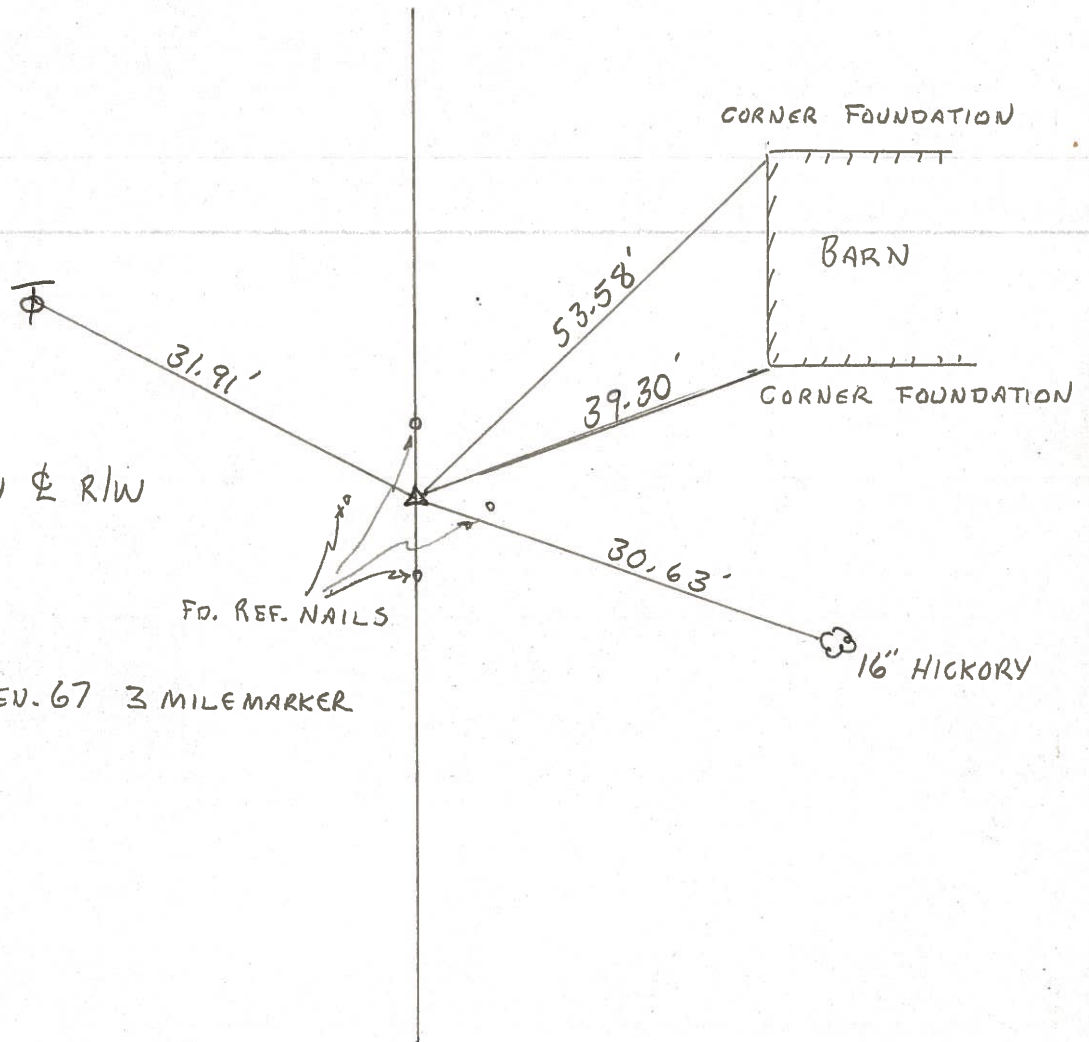
T/LN, RISE

Personnel HOFFMAN
HOUSE HOLDER

11 ~~X~~



P.I. 158+37.7
 FD. R.R. SPIKE ON ϕ R/W
 6" DOWN
 11.0' TO E. E.P.
 9.0' TO W. E.P.
 45.5' SOUTH OF SEV. 67 3 MILE MARKER



County Sevier S.R. 67

Township Elon

Section 2.3

T1N, R15E

Personnel Schneider H

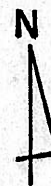
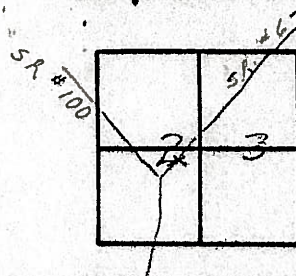
Mosser H

Barbour

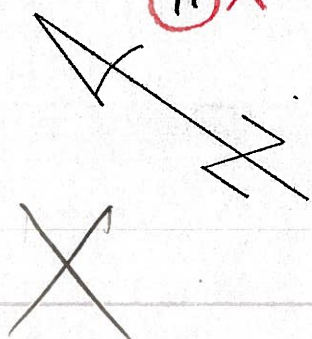
Date 6-25-79 6-16-81

Weather Fair

Temp. 65° +85



~~11-A~~



P.I.

158 + 37.7

Fd. ✓ R.R. spk. on E R/W

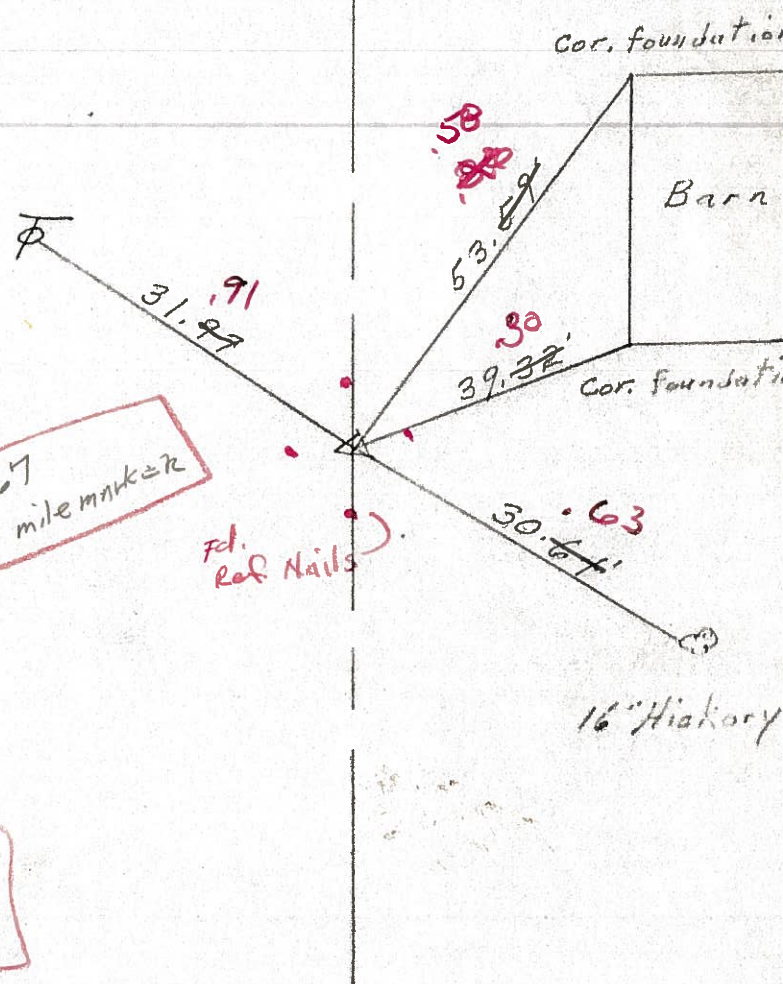
✓ 6" down

SENG 7
3 mile marker

Project - 158 + 21
STA ±

11.0 to E.E.P.
9.0 to W.E.P.

E S.R. #67



PERSONNEL TITLE PERSONNEL TITLE

COUNTY Seneca DATE 12-21-65

S. R. # 67 WEATHER

SEC. TEMP.

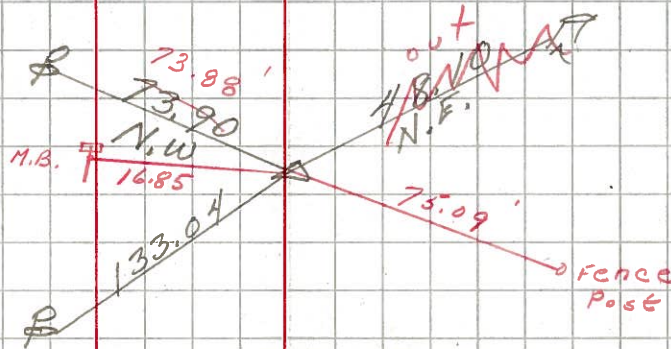
DESCRIPTION LEFT CENTER LINE RIGHT JOB NO.

15

FOUND 2/10/69

263 + 17.05
small R.R. spk.
on & R/W
3" below surface

~~287~~ 8418

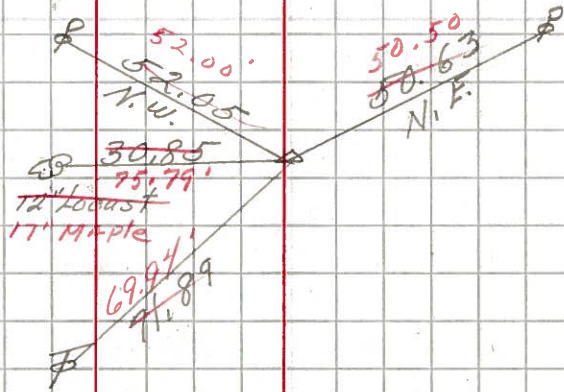


12-A

FOUND 2/10/69
6" below surface

P.I. 205 + 34.15
R.R. spk. on &
R/W

~~280~~ 8417

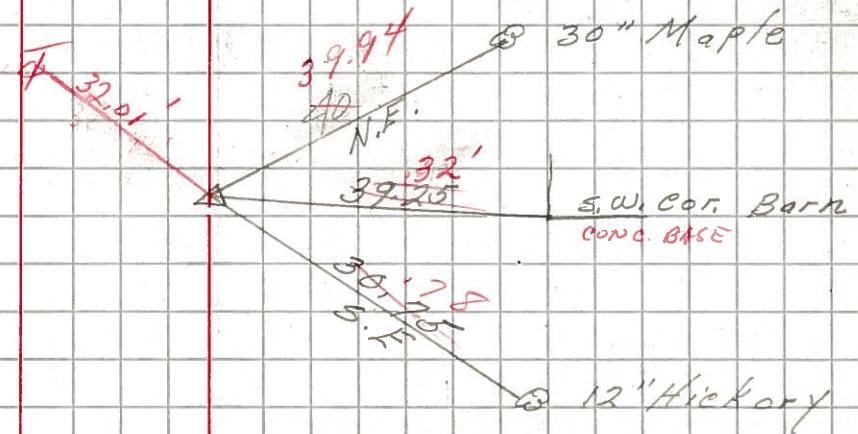


11

FOUND 2/13/68
ASH & CRW

P.I. 758 + 37.7
R.R. spk. on & of R/W
4 1/2" below surface

~~277~~ 8416



P.I. 143 + 41.2
Sec. X (start)
did not find

~~278~~ 8415

PERSONNEL TITLE PERSONNEL TITLE

COUNTY Seneca

DATE

S. R. 67

WEATHER

SEC.

TEMP.

DESCRIPTION

LEFT

CENTER LINE

RIGHT

JOB NO.

Sta. 145+41.2

P.I. Not set.

278

Sec. X Starts

Sta. 158+37.7

R.R. Spike end of RLW

279

PK Nail

39.25'

Barn S.W. Cor

OK

3-28-60

Sta. 205+34.15

R.R. Spike end of RLW

280

12" Locust

50.63' NE

PK Nail

OK

3-28-60

28" Locust shingle

Sta. 263+17.05

R.R. Spike end of RLW

281

73.19' NW

Set RR Spike

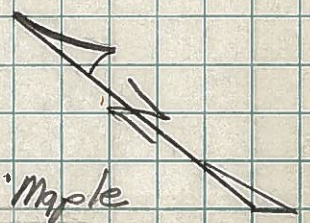
80.53' gone S.E.

15" Walnut

22" Cherry

OK

3-28-60



(11)

(12-A)

(15)