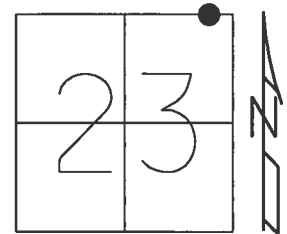


O.D.O.T. DISTRICT 2 SURVEY OFFICE (USE ONLY)

PERSONNEL \_\_\_\_\_ REFERENCE NO. 11 A SHEET 3 OF 25

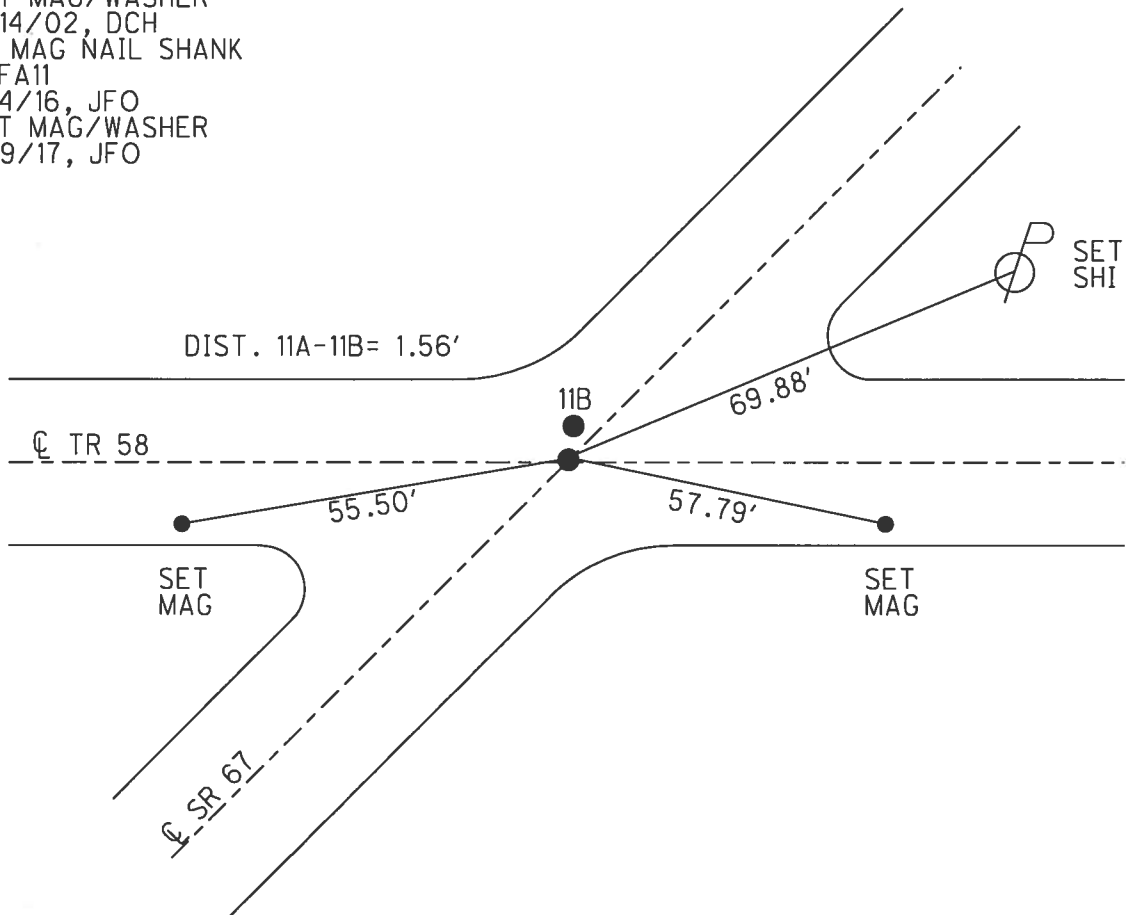
NOTES RHOADES DATE 7/12/17 ROUTE SR 67  
 H.C. O'DONNELL WEATHER CLOUDY COUNTY SENECA  
 R.C. RHOADES TEMP. 83° TOWNSHIP EDEN  
 \_\_\_\_\_ SECTION 23  
 \_\_\_\_\_ T 1 N R 15 E

TYPE MONUMENT MAG NAIL SHANK  
 ON SURFACE - ~~BELOW~~ ON  
 LEFT - ☉ PAV'T - RIGHT ON  
\_\_\_\_\_ TO \_\_\_\_\_ EDGE PAVEMENT  
 S.L.M. 197+89.98



Grid: Northing: 499827.474 Easting: 1804221.982

RECORD:  
 STA. 198+42  
 FD P.K.NAIL  
 5/29/02, DCH  
 SET MAG/WASHER  
 9/14/02, DCH  
 FD MAG NAIL SHANK  
 REFA11  
 2/4/16, JFO  
 SET MAG/WASHER  
 11/9/17, JFO



O.D.O.T. DISTRICT 2 SURVEY OFFICE

PERSONNEL

REFERENCE NO. 11-A

SHEET 2 OF 18

NOTES ROUSOS

H.C. HOMAN

R.C. MICHALAK

DATE 5/29/02

WEATHER PARTLY CLOUDY

TEMP. 74°

ROUTE 67

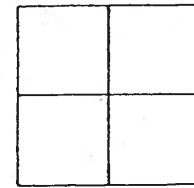
COUNTY SENECA

TOWNSHIP \_\_\_\_\_

SECTION \_\_\_\_\_

T \_\_\_\_\_ R \_\_\_\_\_

TYPE MONUMENT MAG NAIL "B" PK NAIL "A"  
 ON SURFACE - ~~BELOW~~ SURFACE BOTH  
 LEFT - ~~PAVMT~~ RIGHT 1' LT. "B" "A" ON L SR  
TO EDGE PAVEMENT  
 S.L.M. STA 198+42 "A" STA 198+43 "B"



**11-B**

TELEPHONE  
PEDESTAL

24.66

25.47

± Pavmt SR 67

57.32

58.12

49.08

48.95

SET PK NAIL  
IN PAVMT

DIST BETWEEN

A + B. 1.57'

49.35

49.75

± Pavmt T-98

SET  
MAG NAIL  
& WASHER  
OPPOSITE  
STOP SIGN

SET MAG NAIL  
& WASHER

9-14-02 D.C. H.