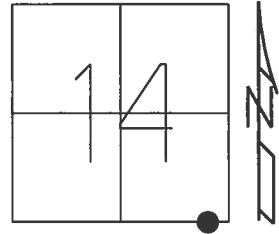


O.D.O.T. DISTRICT 2 SURVEY OFFICE (USE ONLY)

PERSONNEL \_\_\_\_\_ REFERENCE NO. 11 B SHEET 4 OF 25

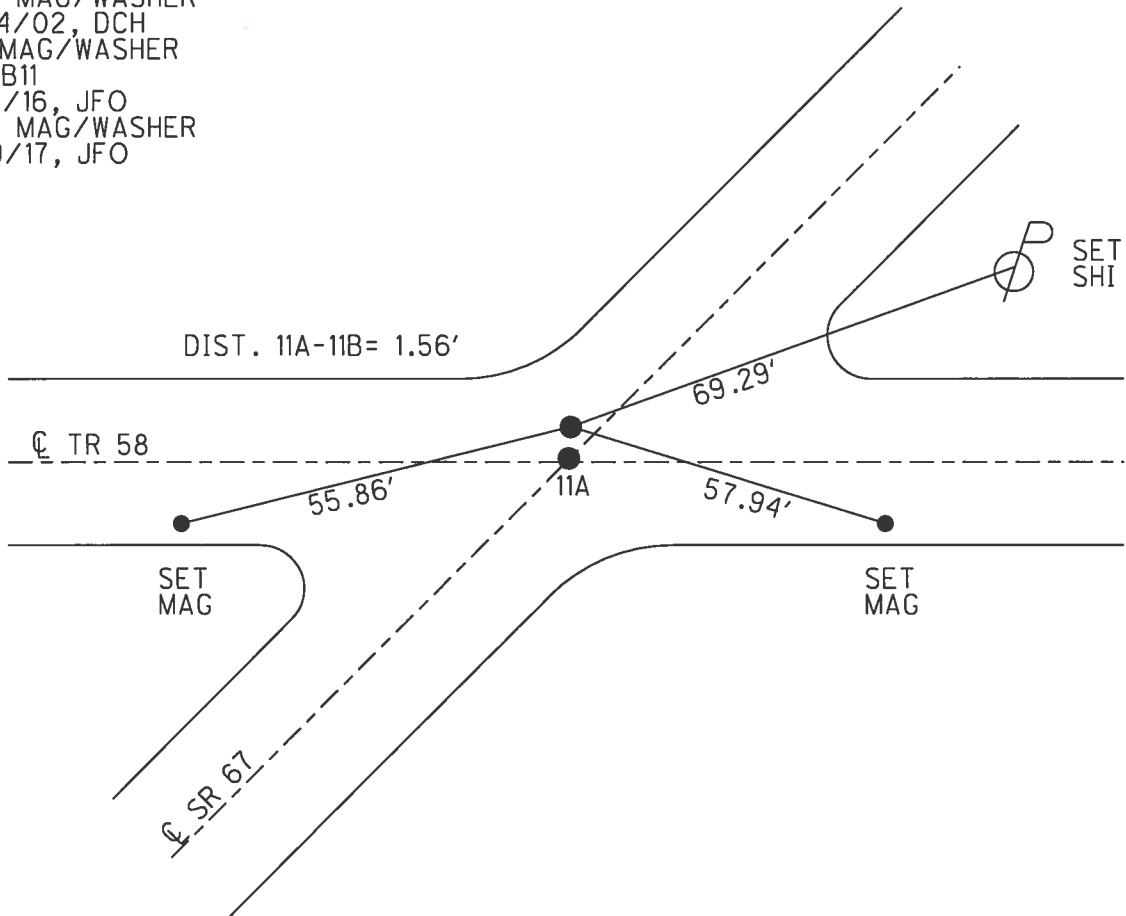
NOTES RHOADES DATE 7/12/17 ROUTE SR 67  
 H.C. O'DONNELL WEATHER CLOUDY COUNTY SENECA  
 R.C. RHOADES TEMP. 83° TOWNSHIP EDEN  
 \_\_\_\_\_ SECTION 14  
 \_\_\_\_\_ T 1 N R 15 E

TYPE MONUMENT MAG/WASHER  
 ON SURFACE - ~~BELOW~~ ON \_\_\_\_\_  
 LEFT - ☉ PAV'T - ~~RIGHT~~ 1'  
 - TO - EDGE PAVEMENT  
 S.L.M. 197+91



Grid: Northing: 499829.033 Easting: 1804222.059

RECORD:  
 STA. 198+43  
 FD MAG NAIL  
 5/29/02, DCH  
 SET MAG/WASHER  
 9/14/02, DCH  
 FD MAG/WASHER  
 REFB11  
 2/4/16, JFO  
 SET MAG/WASHER  
 11/9/17, JFO



O.D.O.T. DISTRICT 2 SURVEY OFFICE

PERSONNEL

REFERENCE NO. 11-A

SHEET 2 OF 18

NOTES ROUSOS

H.C. HOMAN

R.C. MICHALAK

DATE 5/29/02

WEATHER PARTLY CLOUDY

TEMP. 74°

ROUTE 67

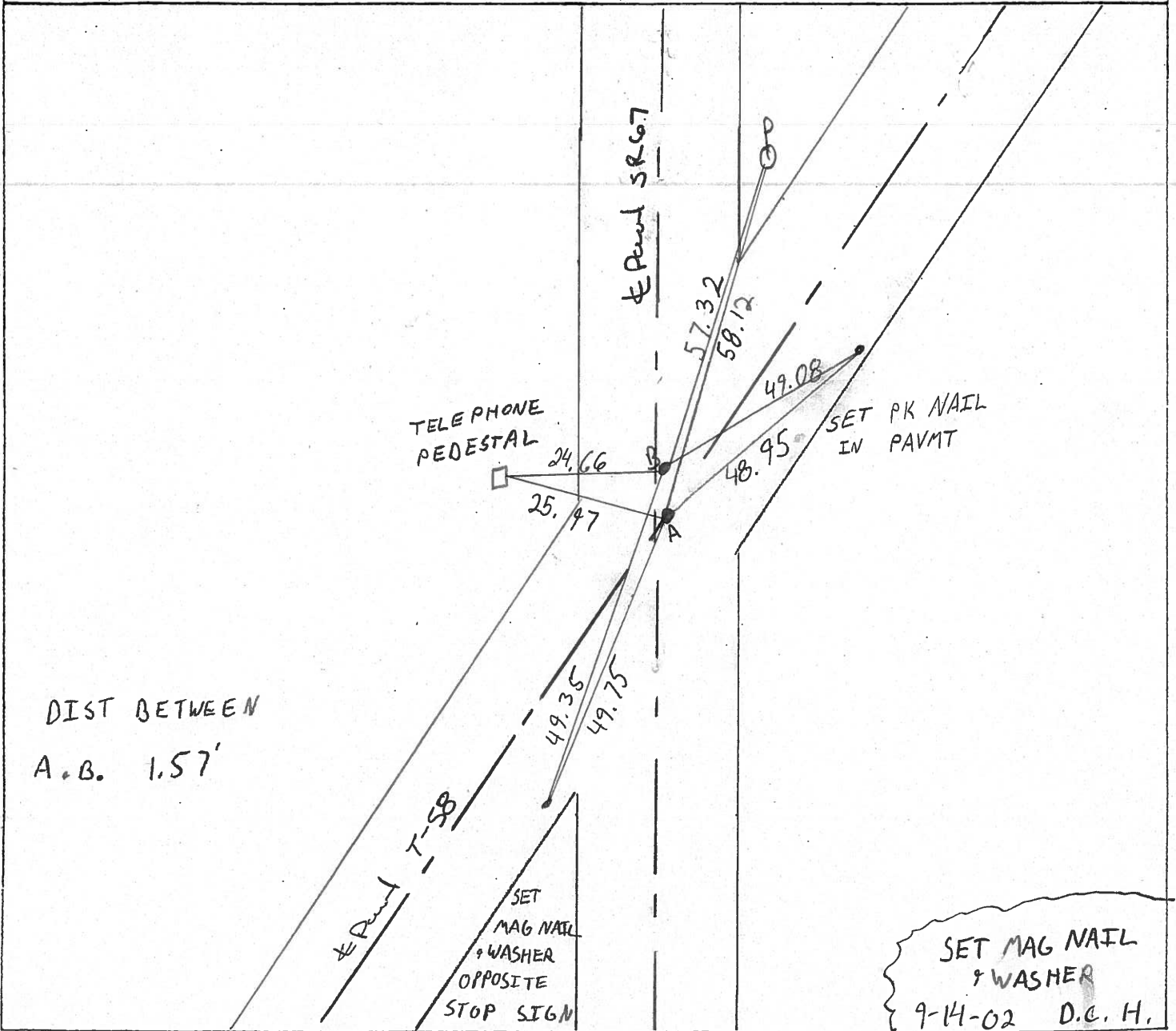
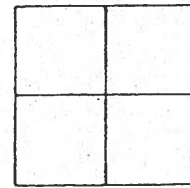
COUNTY SENECA

TOWNSHIP \_\_\_\_\_

SECTION \_\_\_\_\_

T \_\_\_\_\_ R \_\_\_\_\_

TYPE MONUMENT MAG NAIL "B" PK NAIL "A"  
 ON SURFACE - ~~BELOW~~ SURFACE BOTH:  
 LEFT - PAV'T. RIGHT 1' LT. "B" "A" ON E SR  
TO EDGE PAVEMENT  
 S.L.M. STA 198+42 "A" STA 198+43 "B"



DIST BETWEEN  
 A.B. 1.57'

SET MAG NAIL  
 & WASHER  
 9-14-02 D.C.H.