

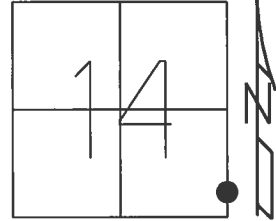
O.D.O.T. DISTRICT 2 SURVEY OFFICE (USE ONLY)

PERSONNEL _____ REFERENCE NO. 12 SHEET 5 OF 25

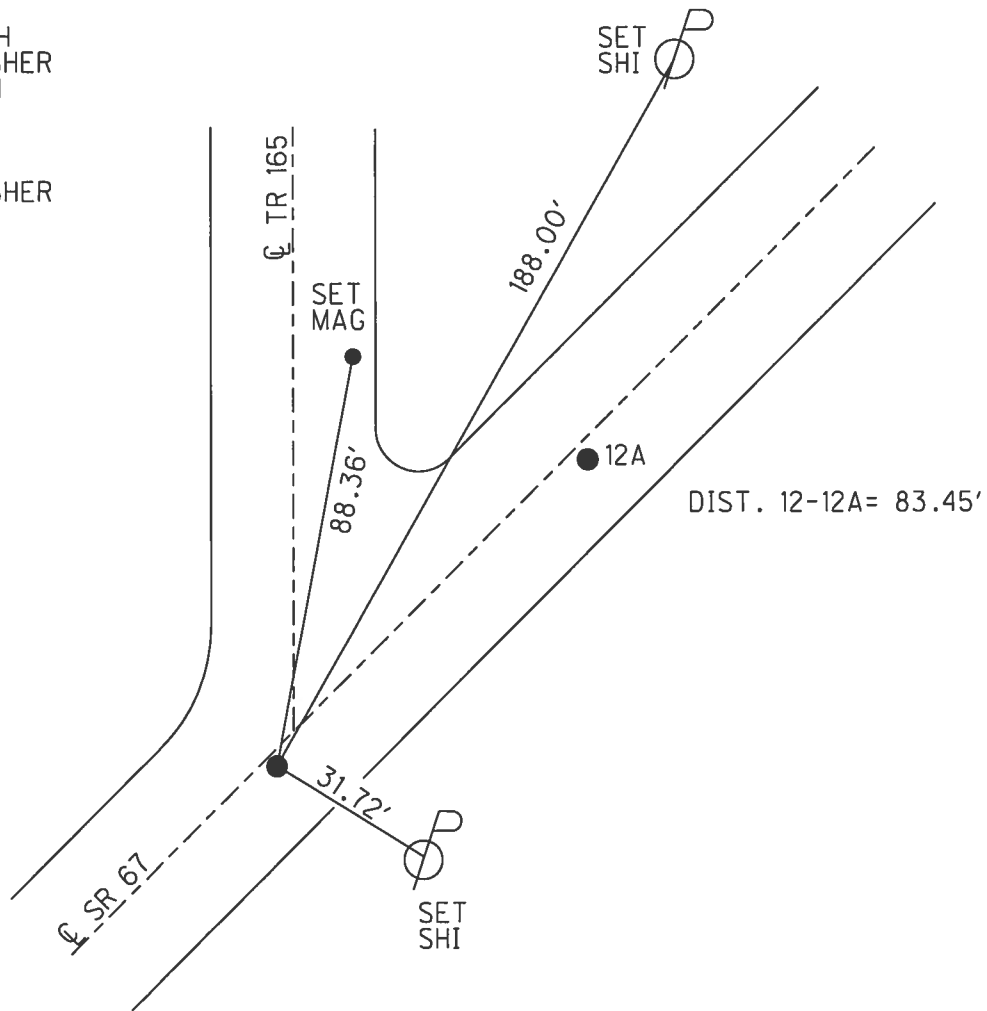
NOTES RHOADES DATE 7/12/17 ROUTE SR 67
 H.C. O'DONNELL WEATHER CLOUDY COUNTY SENECA
 R.C. RHOADES TEMP. 83° TOWNSHIP EDEN
 SECTION 14
 T 1 N R 15 E

TYPE MONUMENT MAG NAIL
 ON SURFACE - ~~BELOW~~ ON _____
~~LEFT~~ - CL PAV'T - RIGHT 1'
 - TO - EDGE PAVEMENT
 S.L.M. 204+48.71

Grid: Northing: 500309.362 Easting: 1804671.179



RECORD:
 STA. 205+02
 FD MAG NAIL
 5/30/02, DCH
 SET MAG/WASHER
 9/14/02, DCH
 FD MAG NAIL
 REF12
 2/4/16, JFO
 SET MAG/WASHER
 11/9/17, JFO



O.D.O.T. DISTRICT 2 SURVEY OFFICE

PERSONNEL

REFERENCE NO. 12

SHEET 3 OF 18

NOTES ROUSOS

H.C. HOMAN

R.C. MICHALAK

DATE 5/30/02

WEATHER WINDY

TEMP. 65°

ROUTE 67

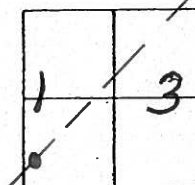
COUNTY SENECA

TOWNSHIP EDEN

SECTION 13

T L N R 15 E

TYPE MONUMENT PK + WASHER "A"; MAG NAIL "B"
 ON SURFACE - ~~BELOW~~ ON SURFACE
 LEFT - & PAVT. - RIGHT 6' RT & PAVT "A" 1' RT & PAVT "B"
 TO EDGE PAVEMENT
 S.L.M. STA 205+85 "A" STA 205+02 "B"



PI Record:
 205+34.15
 PK + WASHER ATOP
 BOAT SPIKE ATOP R.R.
 SPIKE

DIST BETWEEN
 A+B 83.43'

SET MAG NAIL
 & WASHER
 7-14-02 D.C.H.

