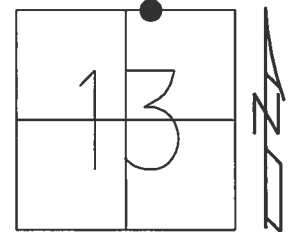


O.D.O.T. DISTRICT 2 SURVEY OFFICE (USE ONLY)

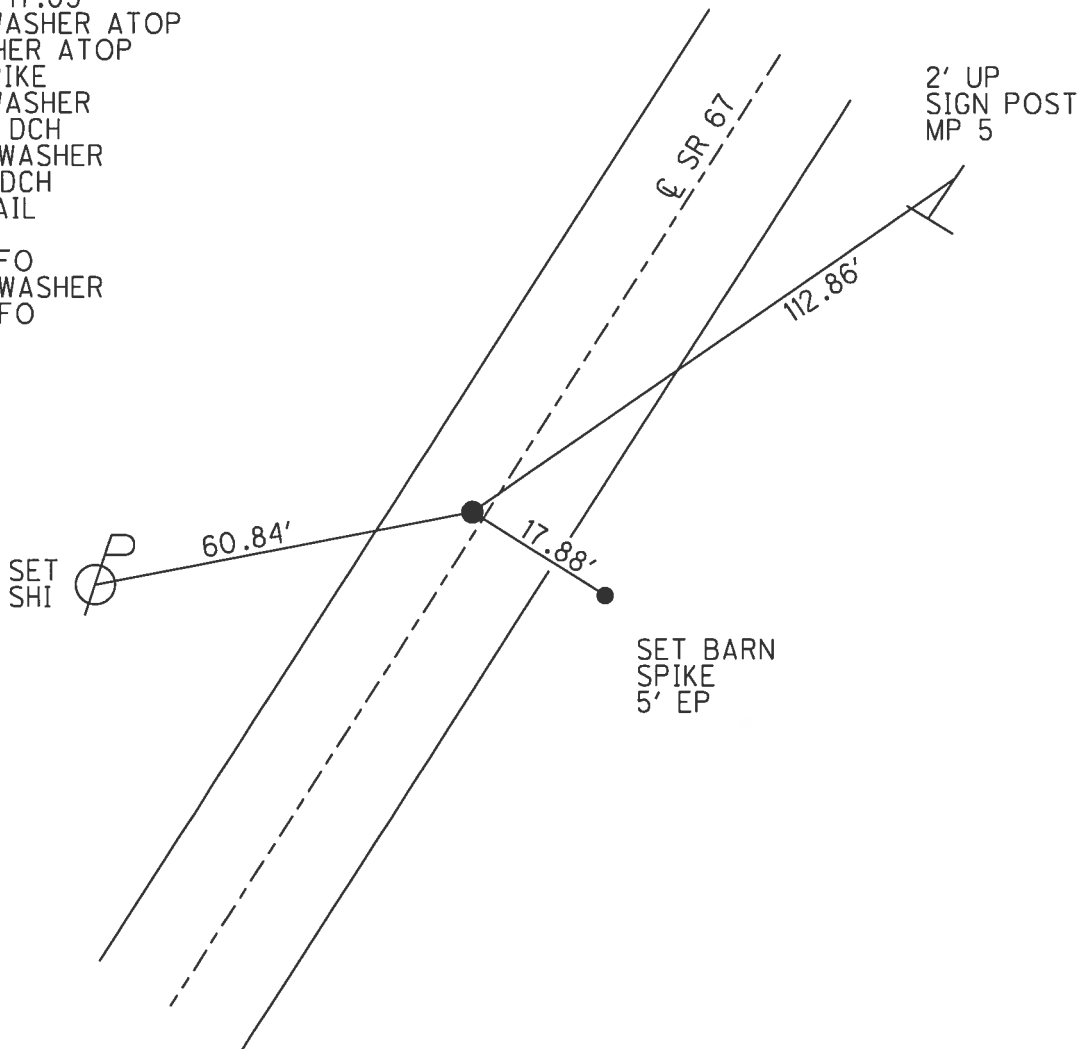
PERSONNEL \_\_\_\_\_ REFERENCE NO. 15 SHEET 7 OF 25  
 NOTES RHOADES DATE 7/13/17 ROUTE SR 67  
 H.C. O'DONNELL WEATHER CLOUDY COUNTY SENECA  
 R.C. RHOADES TEMP. 74° TOWNSHIP EDEN  
 \_\_\_\_\_ SECTION 13  
 \_\_\_\_\_ T 1 N R 15 E

TYPE MONUMENT MAG NAIL  
 ON SURFACE - ~~BELOW~~ ON \_\_\_\_\_  
 LEFT - ☉ PAV'T - ~~RIGHT~~ 1.5'  
 - TO - EDGE PAVEMENT  
 S.L.M. 263+15.61



Grid: Northing: 505135.856 Easting: 1808004.954

RECORD: P.I.  
 STA. 263+17.05  
 FD P.K./WASHER ATOP  
 P.K./WASHER ATOP  
 SM.R.R.SPIKE  
 FD P.K./WASHER  
 5/30/02, DCH  
 SET MAG/WASHER  
 9/14/02, DCH  
 FD MAG NAIL  
 REF15  
 2/4/16, JFO  
 SET MAG/WASHER  
 11/9/17, JFO



O.D.O.T. DISTRICT 2 SURVEY OFFICE

PERSONNEL

REFERENCE NO. 15

SHEET 4 OF 18

NOTES ROUSOS

H.C. HOMAN

R.C. MICHALAK

DATE 5/30/02

WEATHER CLOUDY

TEMP. 68°

ROUTE 67

COUNTY SENECA

TOWNSHIP BLOOM

SECTION 13

T I N R I S E

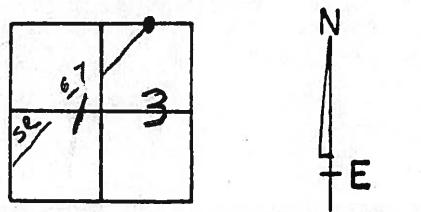
TYPE MONUMENT PK & WASHER

ON SURFACE - BELOW ON SURFACE

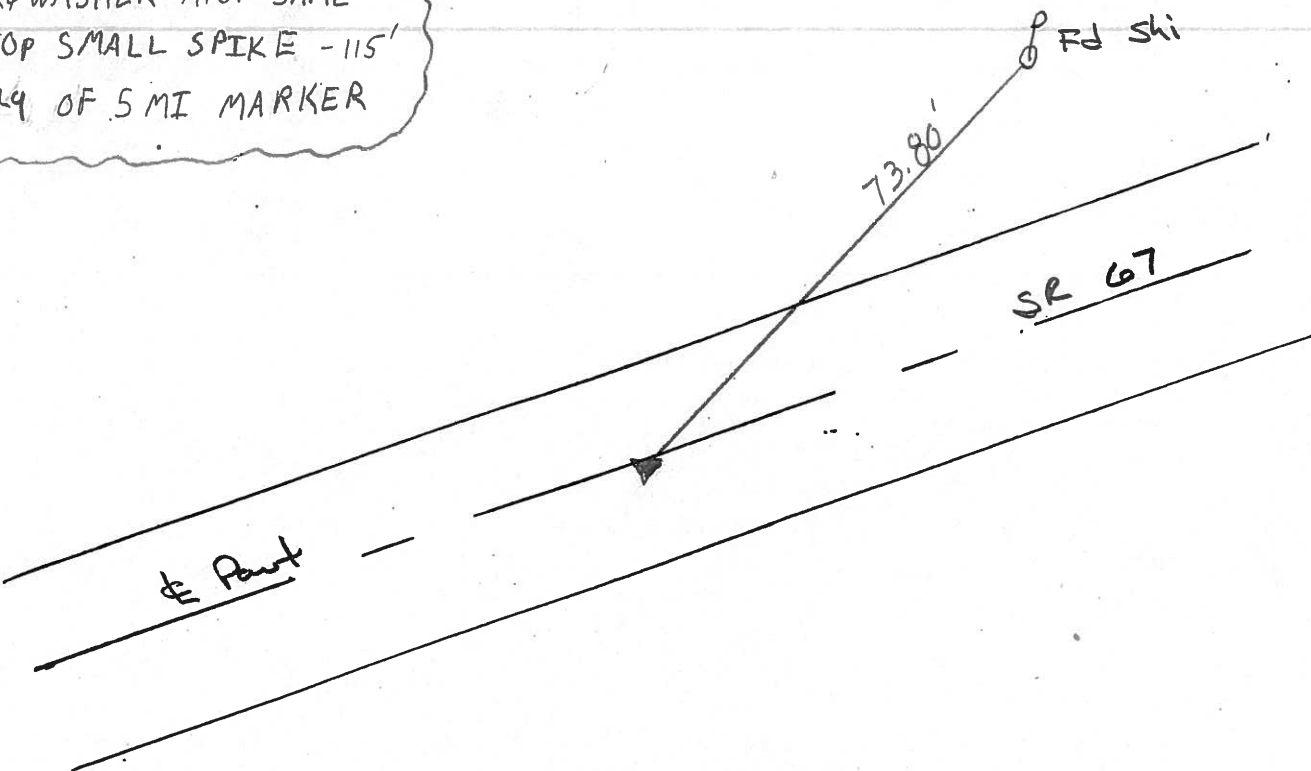
LEFT - PAV'T. - RIGHT 115'

TO EDGE PAVEMENT

S.L.M. 263 + 78



P.I. Record:  
 263+17.05  
 PK & WASHER ATOP SAME  
 ATOP SMALL SPIKE - 115'  
 SLY OF 5 MI MARKER



SET MAG NAIL &  
 WASHER 9-14-02  
 D.C.H.

# O.D.O.T. DISTRICT 2 SURVEY OFFICE

PERSONNEL

REFERENCE NO. 15

SHEET 14 OF     

NOTES Cronin

DRAWN 11/12/86

H.C. Ripple

DATE 11/10/86

ROUTE #67

R.C. Geyman

WEATHER sunny

COUNTY Seneca

Barbour

TEMP. 46°

TOWNSHIP Eden

SECTION 13

T 1 N R 15 E

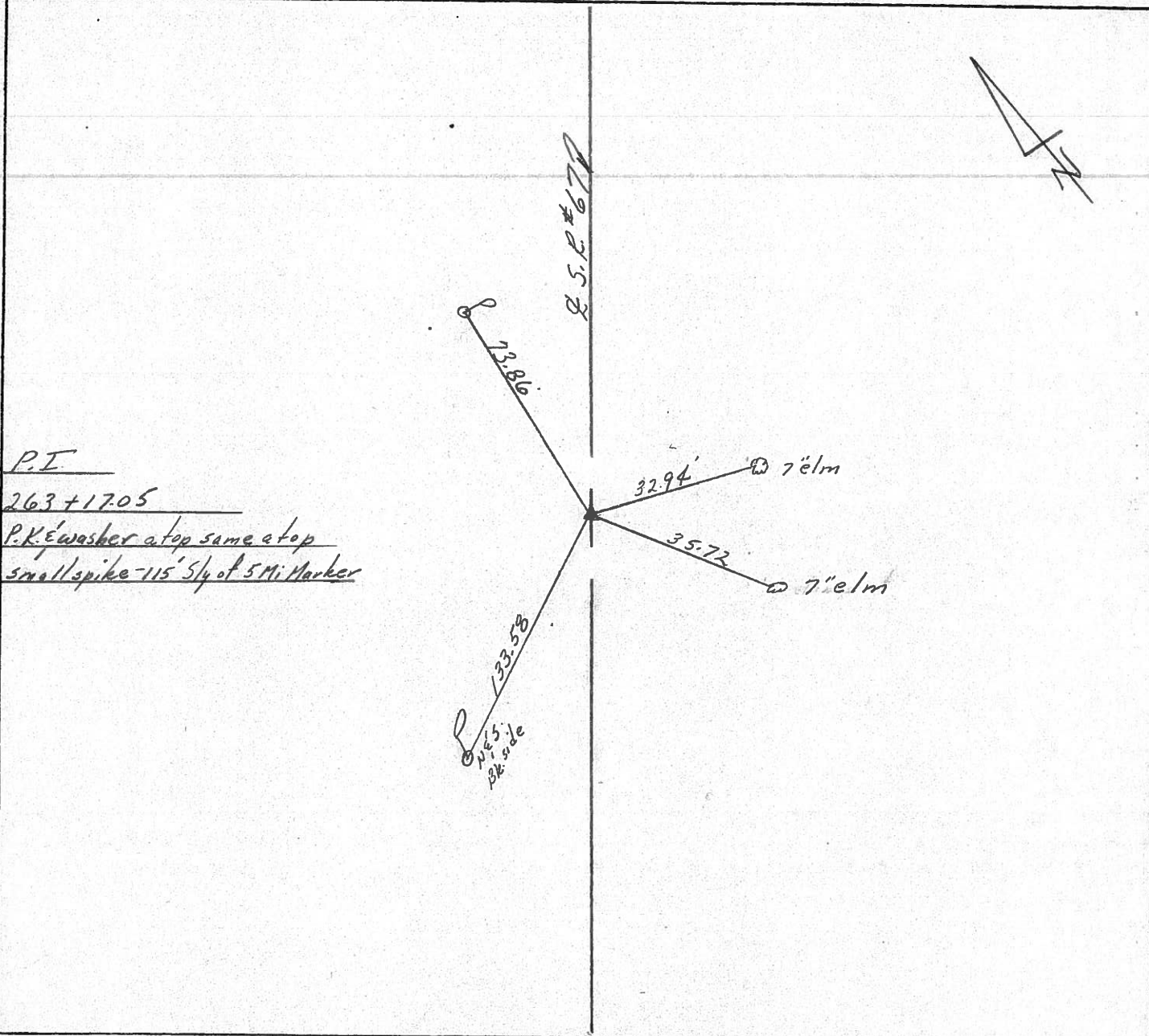
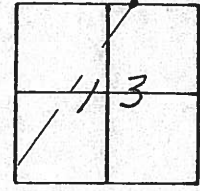
TYPE MONUMENT P.K. washer

ON SURFACE - BELOW on surface

LEFT - € PAV'T. - RIGHT 1 1/2' Lt. & Pavt.

TO      EDGE PAVEMENT

S.L.M.     



County SENECA S.R. 67

Date 8/10/81

Township EDEN

Weather SUNNY

Section 13

Temp. 72°

T/LN, R/S

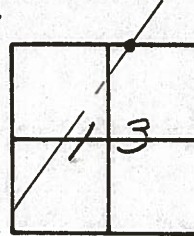
Personnel CRONIN

RIPPLE

GEYMAN

MOSSER

BARBOUR



#15



P.I.  
263+17.05  
 Resct PK & washer atop  
 small spike 5" below  
 surface - 1 1/2' Lt. of P. unit.  
 115' So. of 5 Mile Marker

SHI. SE/S

138.816'

SHI. W/S

33.05' @ 4" elm

SHI. NW/S

35.92' @ clump of 4" elms

135.52'

PK N/S on W side

13360 TO SHI.  
 ON N/S P. POLE  
 HOFFMAN  
 6-16-81

267

County Seneca S.R. 67

Date 6-16-81

Township Eden

Weather FAIR

Section 13

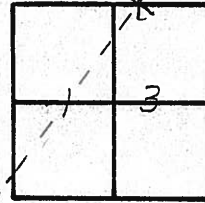
Temp. 85°

T/LN, R/E

Personnel HOFFMAN

HOUSEHOLDER

Barrett



(15)



⊥ S.R. # 67

SHI. SE/S

73.86'  
~~73.88'~~

SHI. W/S

33.05'

4" ELM

35.98'

3 3/8"

clump of 4" Elms

SHI. N.W/S

133.60'  
~~133.04'~~

SHI. N/S

P. I.

263 + 17.05

FD - small spk. on ⊥ R/W

4" below surface

1 1/2' Lt. of ⊥

115' S. OF SEN. 67 #5 MILEMARKER

8.4' TO W. E.P.  
10.9' TO E. E.P.

County Seneca S.R. 67

Township Eden

Section 13

T1N, R15E

Personnel Schneider H

Mosser H

Barbour

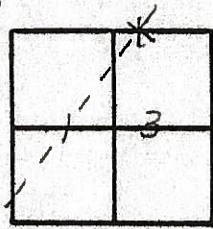
\_\_\_\_\_

\_\_\_\_\_

Date 6-25-79 6-16-81

Weather Fair

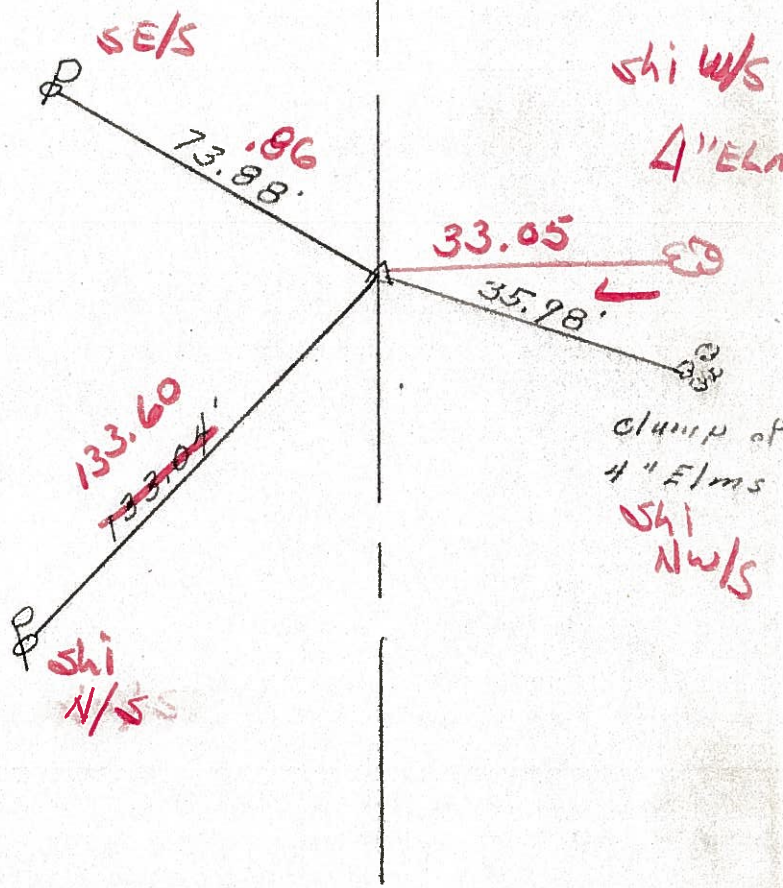
Temp. 70° +85



15



⊥ S.R. # 67



P. I.

263 + 17.05

Fd. small spk. on ⊥ R/W

✓ 4" below surface

✓ 1 1/2' Lt. of ⊥

Project STA. ± 263 + 29

115' S. of sen 67  
1/5 mile marker

8.4 to W.E.P.

10.9 to E.E.P.

PERSONNEL TITLE PERSONNEL TITLE

COUNTY Seneca DATE 12-21-65

S. R. # 67 WEATHER

SEC TEMP

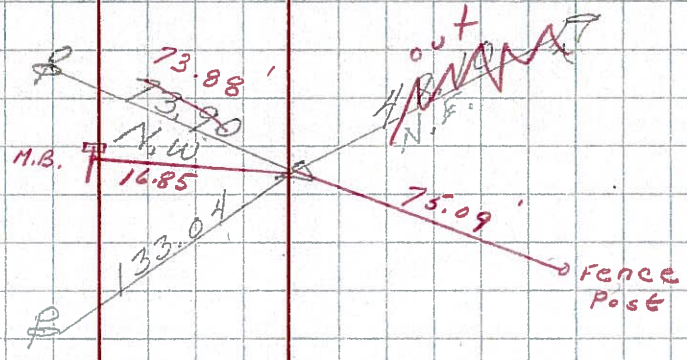
DESCRIPTION LEFT CENTER LINE RIGHT JOB NO.

15

FOUND 2/10/69

263 + 17.05  
Small R.R. spk.  
on & R/W  
3" below surface

~~287~~ 8418

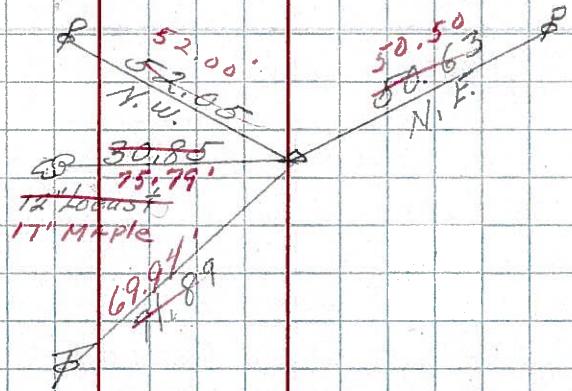


12-A

FOUND 2/10/69  
6" below surface

P.I. 205 + 34.15  
R.R. spk. on &  
R/W

~~289~~ 8417

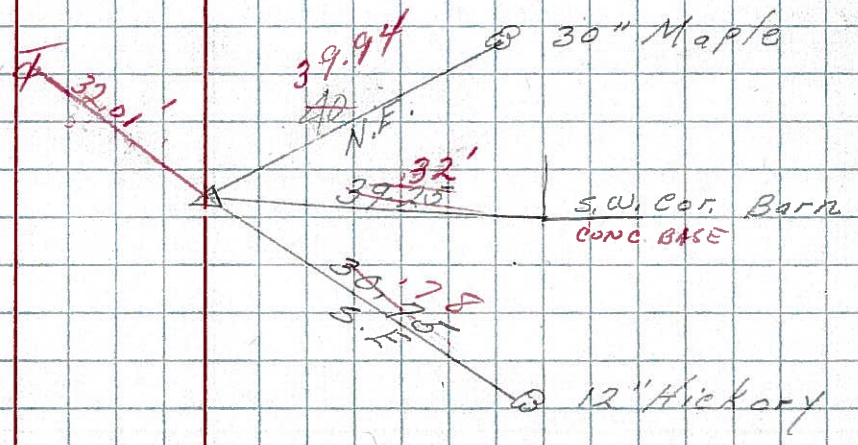


11

FOUND 12/13/68  
15" H. & CREW

P.T. 758 + 37.7  
R.R. spk. on & of R/W  
1/2" below surface

~~277~~ 8416



P.I. 143 + 41.2  
Sec. X (start)  
did not find

~~278~~ 8415

PERSONNEL TITLE PERSONNEL TITLE

COUNTY Seneca

DATE

S. R. 67

WEATHER

SEC.

TEMP.

DESCRIPTION

LEFT

CENTER LINE

RIGHT

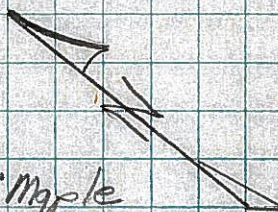
JOB NO.

Sta. 149+41.2

P.I. Not set

278

Sec. X Starts



Sta. 158+37.7

R.R. Spike on end of R/W

279

P.K. Nail

39.25'

Barn S.W. Cor

OK

3-28-60

50.75' S.W.

12" Hickory

12-A

Sta. 205+34.15

R.R. Spike on end of R/W

280

P.K. Nail

52.05' N.W.

30.85'

12" Locust

50.65' N.E.

P.K. Nail

OK

3-28-60

72' S.W. 71.89'

28" Locust shiner

15

Sta. 263+17.05

R.R. Spike on end of R/W

281

73.9' N.W.

48.10' N.E.

15" Walnut

set RR Spike

OK

3-28-60

80.55' S.W.

22" Cherry