

O.D.O.T. DISTRICT 2 SURVEY OFFICE (USE ONLY)

PERSONNEL _____ REFERENCE NO. 16 SHEET 8 OF 25

NOTES RHOADES DATE 7/13/17 ROUTE SR 67
 H.C. O'DONNELL WEATHER CLOUDY COUNTY SENECA
 R.C. RHOADES TEMP. 74° TOWNSHIP EDEN
 _____ SECTION 7
 _____ T 1 N R 16 E

TYPE MONUMENT MAG NAIL SHANK

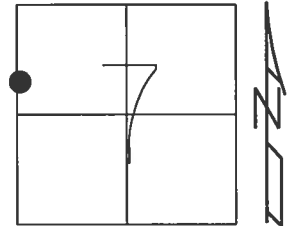
ON SURFACE - ~~BELOW~~ ON _____

~~LEFT~~ - CL PAV'T - RIGHT 1.5'

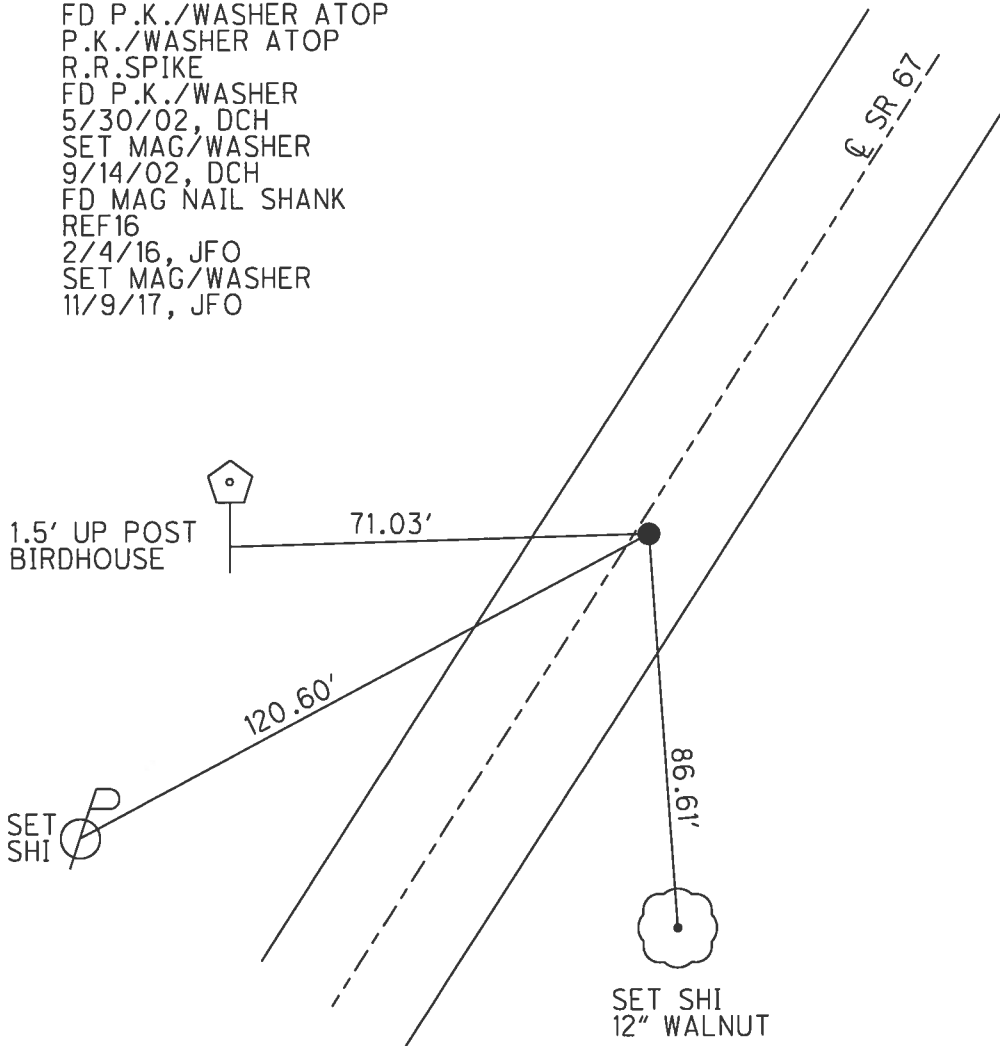
_____ TO _____ EDGE PAVEMENT

S.L.M. 303+55.34

Grid: Northing: 508454.921 Easting: 1810307.820



RECORD:
 STA. 303+56.50
 FD P.K./WASHER ATOP
 P.K./WASHER ATOP
 R.R.SPIKE
 FD P.K./WASHER
 5/30/02, DCH
 SET MAG/WASHER
 9/14/02, DCH
 FD MAG NAIL SHANK
 REF16
 2/4/16, JFO
 SET MAG/WASHER
 11/9/17, JFO



O.D.O.T. DISTRICT 2 SURVEY OFFICE

PERSONNEL _____

REFERENCE NO. 16

SHEET 5 OF 18

NOTES ROUSOS

H.C. HOMAN

R.C. MECHALAK

DATE 5/30/02

WEATHER CLOUDY

TEMP. 68°

ROUTE #67

COUNTY SENECA

TOWNSHIP BLOOM

SECTION 7

T. 1 N. 16 E.

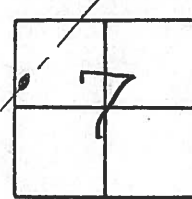
TYPE MONUMENT P.K. & WASHER

ON SURFACE - BELOW ON SURFACE

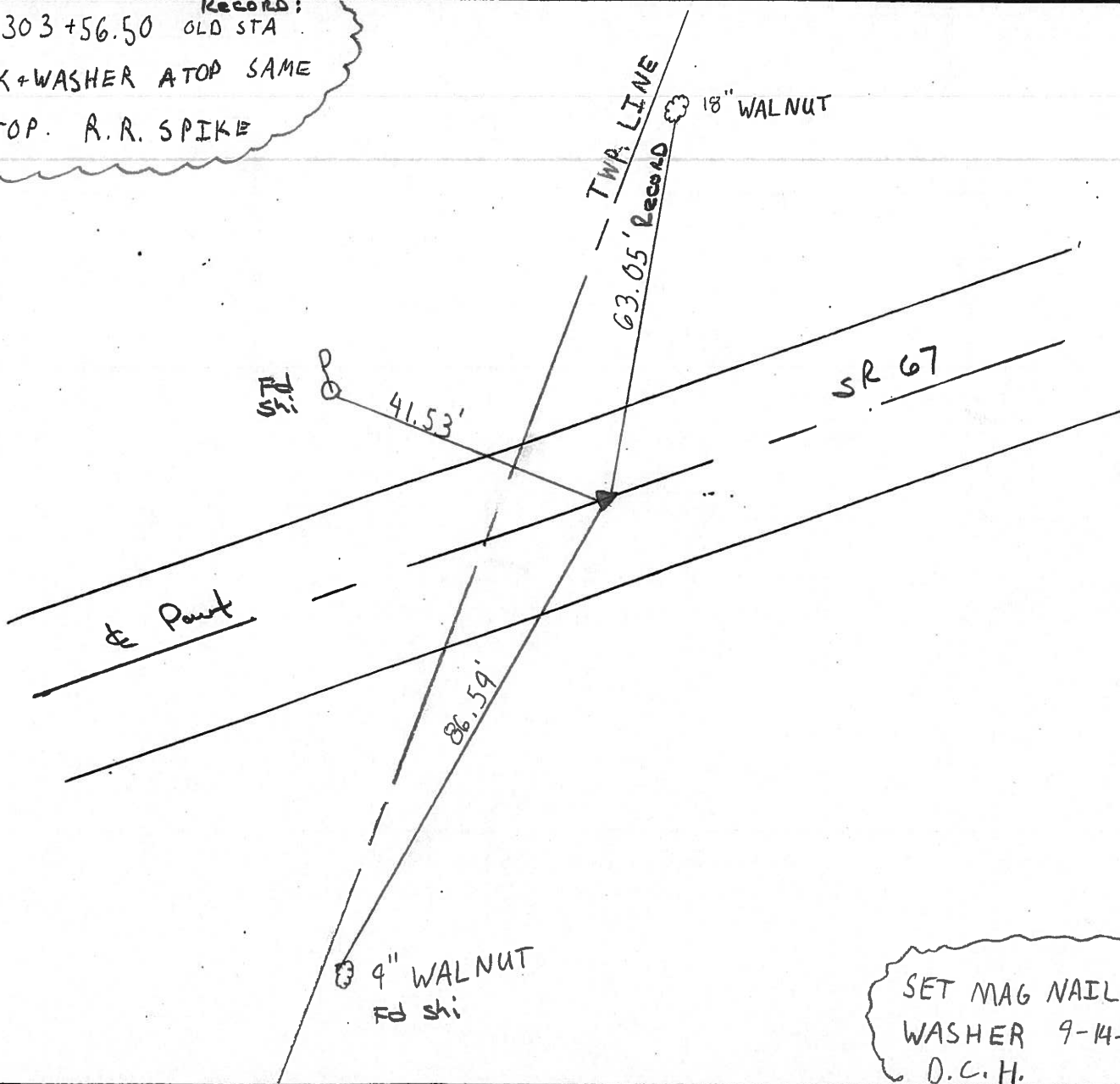
~~LEFT~~ - E PAV'T. - RIGHT .5 RT.

TO EDGE PAVEMENT

S.L.M. STA 304+27



Records:
 303+56.50 OLD STA
 PK+WASHER ATOP SAME
 ATOP. R.R. SPIKE



SET MAG NAIL &
 WASHER 9-14-02
 D.C.H.

O.D.O.T. DISTRICT 2 SURVEY OFFICE

PERSONNEL

NOTES Cronin
 H.C. Ripple
 R.C. Geyman
Barbour

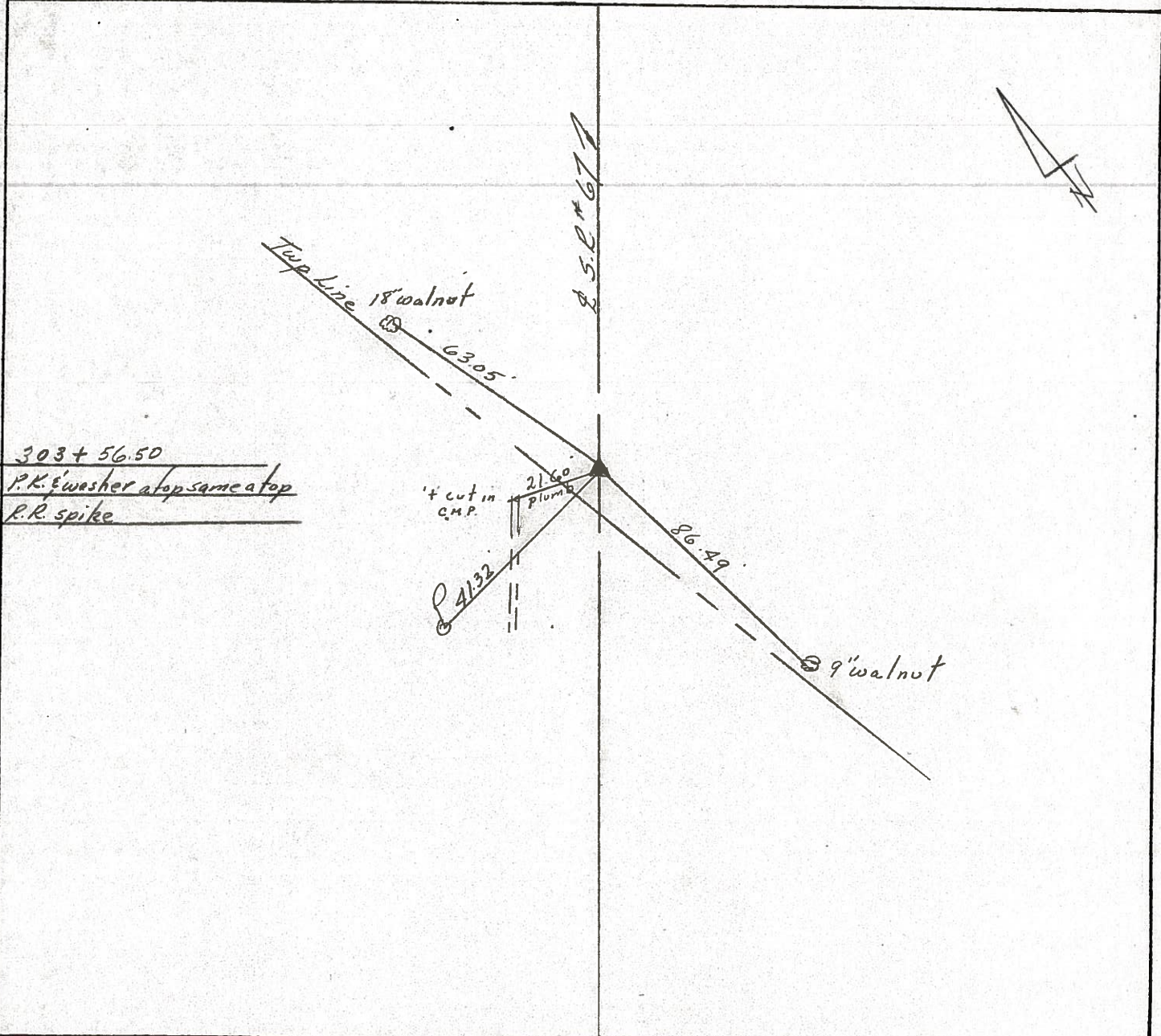
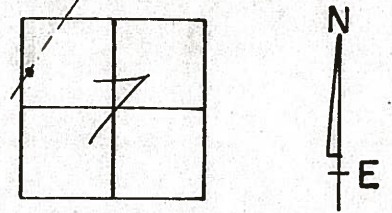
REFERENCE NO. 16

DRAWN 11/12/86
 DATE 11/10/86
 WEATHER sunny
 TEMP. 46°

SHEET 15 OF _____

ROUTE #67
 COUNTY Seneca
 TOWNSHIP Bloom
 SECTION 7
 T 1 N 16 R 16 E

TYPE MONUMENT P.K. washer
 ON SURFACE - BELOW on surface
 LEFT - CL PAV'T. - RIGHT 1 1/2' L. & Pav't.
 TO EDGE PAVEMENT
 S.L.M. _____



County SENECA S.R. 67

Date 8/10/81

Township BLOOM

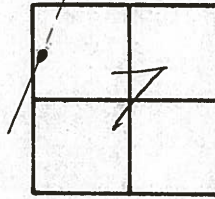
Weather SUNNY

Section 7

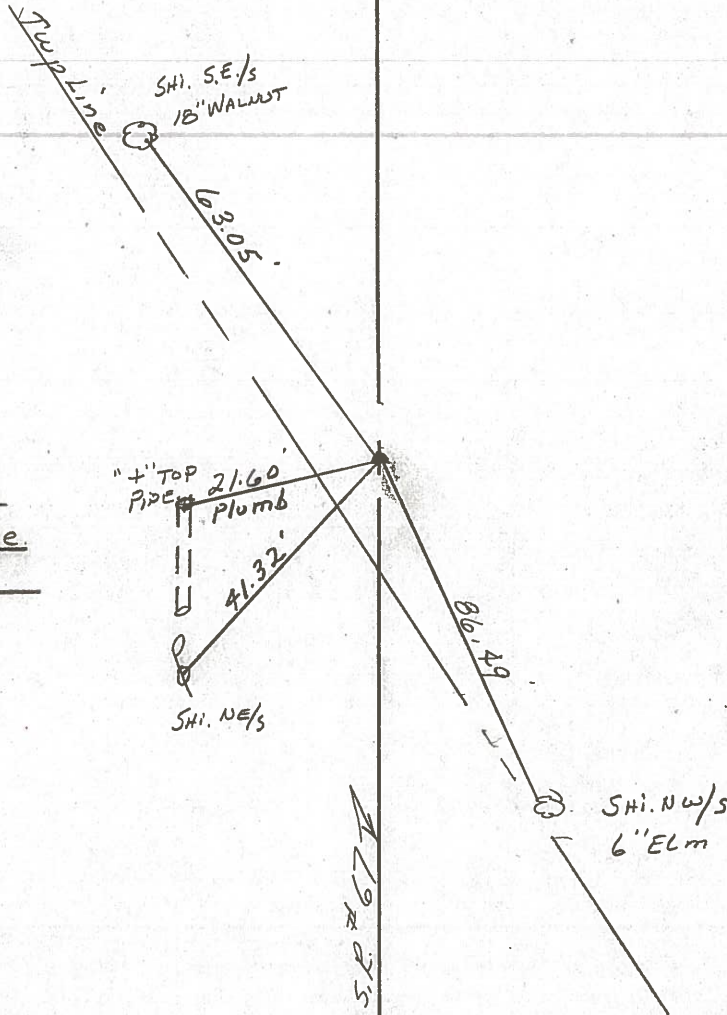
Temp. _____

T/LN, R/E

Personnel CROWIN
RIPPLE
GEYMAN
MOSSER
BARBOUR



#16



303 + 56.5
Reset P.K. & Washer atop
P.R. spike 7\"/>

"+" TOP
 PIPE 21.60'
 Plumb
 41.32'
 SHI. NE/S

S.P. 267

PERSONNEL TITLE PERSONNEL TITLE

COUNTY Seneca DATE 12-21-65

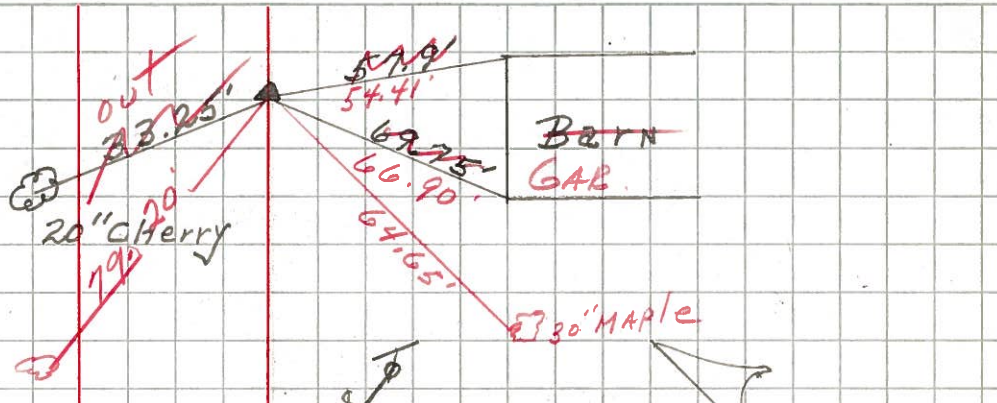
S. R. # 67 WEATHER

SEC. TEMP.

DESCRIPTION LEFT CENTER LINE RIGHT JOB NO.

20

FOUND 2/11/69
Sta. 401+34.7
R.R. SPIKE on E R/W
North of R.R.
Spk 5 1/2 below surface



8422 17" Catalpa

19

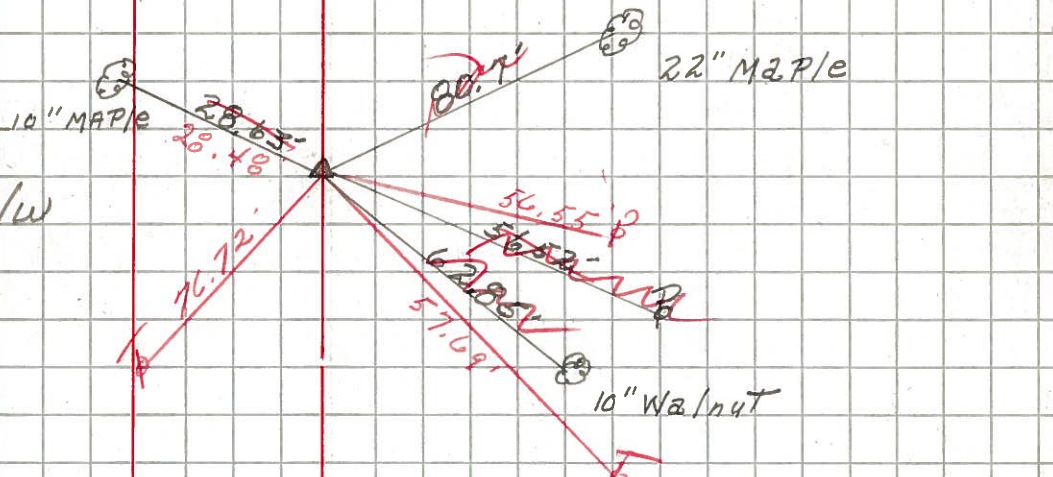
Sta. 392+29.57
R.R. SPIKE on E of R/W
Intersection of US #224
& SR #67



~~226~~
8421

17

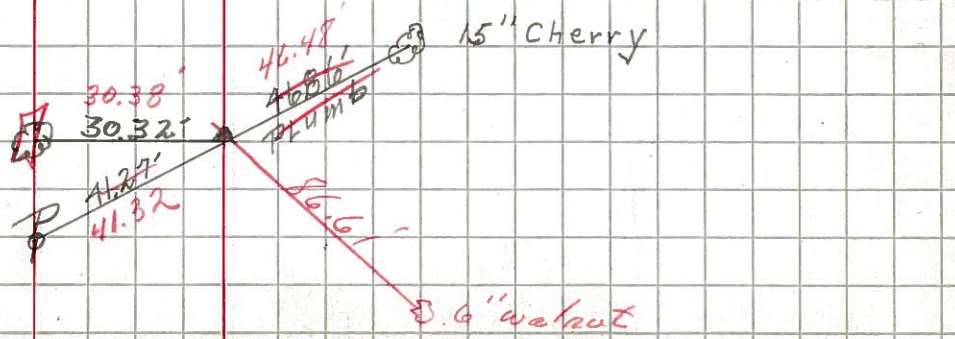
Found 2/11/69
C.R. #16
Sta. 328+80.85
R.R. SPIKE on E of R/W
5" below surface



~~203~~
8420

16

FOUND 2/11/69
Sta. 303+56.5
R.R. SPIKE on E of R/W
5" below surface



~~202~~
8419

PERSONNEL TITLE PERSONNEL TITLE

COUNTY Seneca DATE

S. R. 67 WEATHER

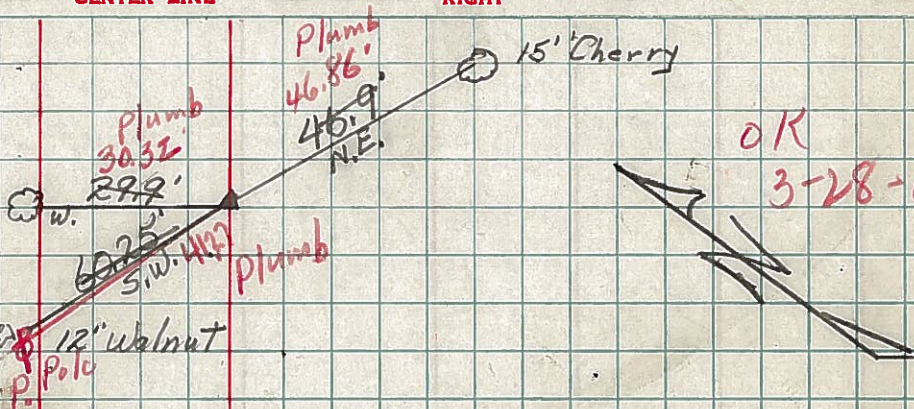
SEC. TEMP.

DESCRIPTION LEFT CENTER LINE RIGHT JOB NO.

16

Sta. 303+56.5
R.R. Spike end of R/W

282

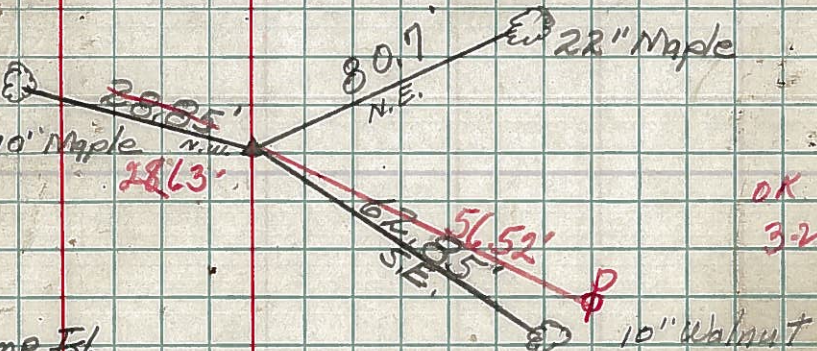


OK
3-28-60

17

Sta. 328+80.85
R.R. Spike end of R/W

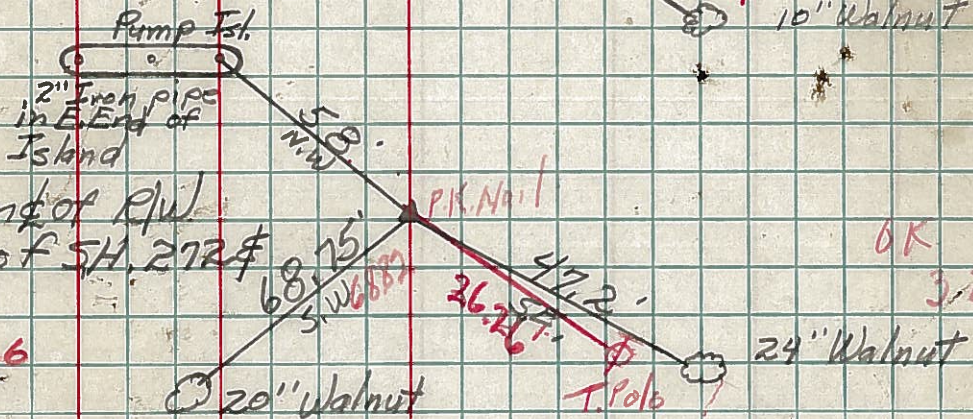
283



OK
3-28-60

Sta. 391+86
R.R. Spike end of R/W
Intersection of SH. 272 &
SH. 267

226



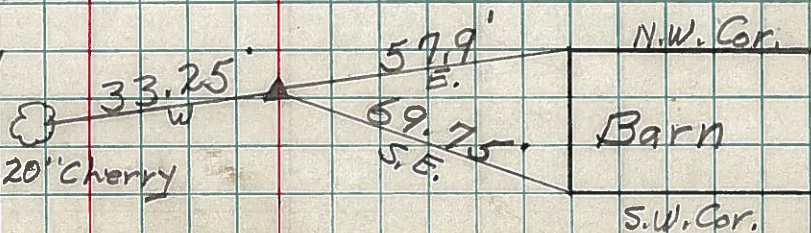
OK
3-29-60

Sec. X Ends Sec. P. Starts

20

Sta. 401+34.7
R.R. Spike end of R/W
N. of R.R.

284



OK
3-29-60