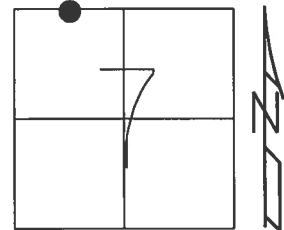


O.D.O.T. DISTRICT 2 SURVEY OFFICE (USE ONLY)

PERSONNEL _____ REFERENCE NO. 17 SHEET 9 OF 25

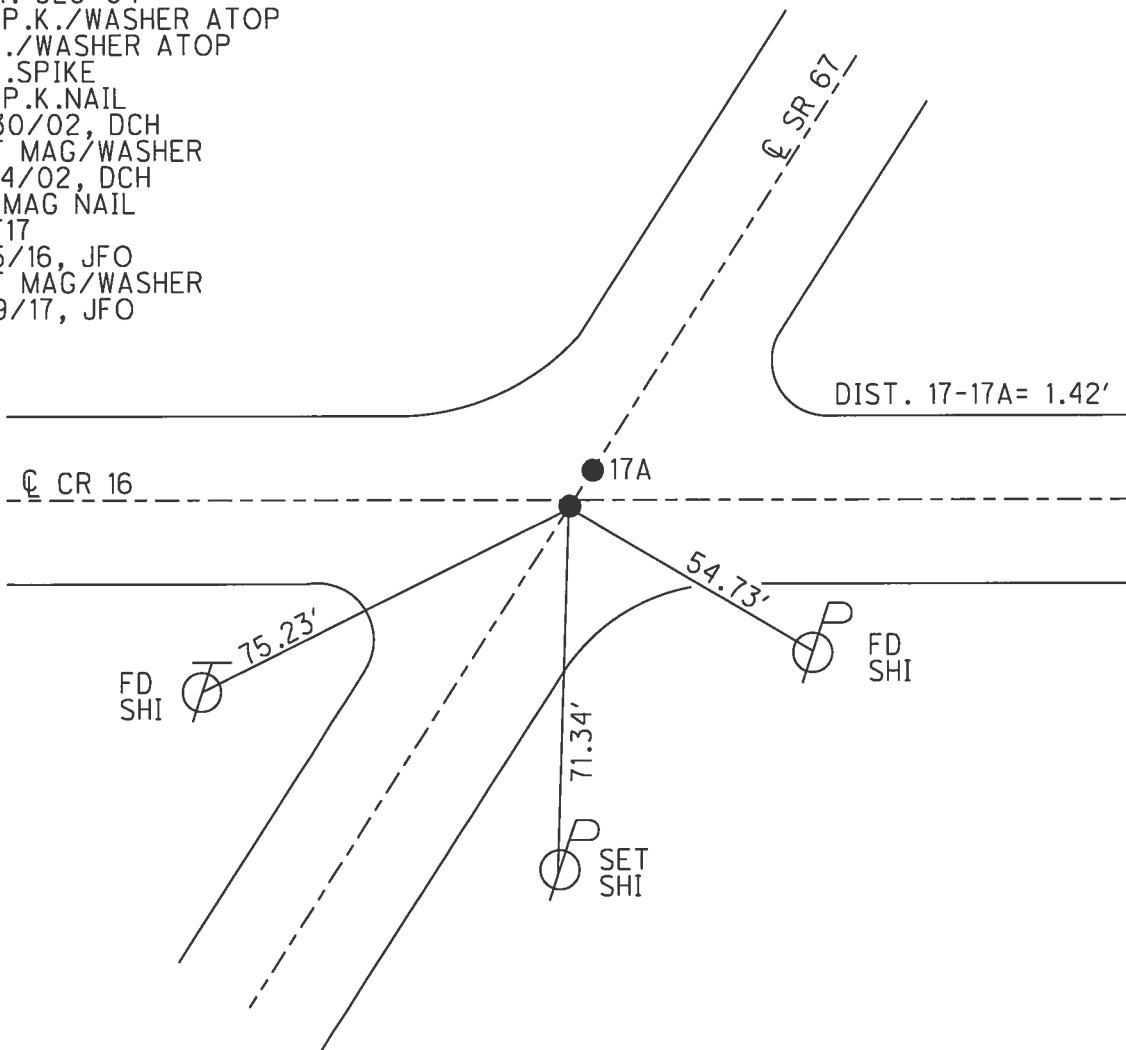
NOTES RHOADES DATE 7/13/17 ROUTE SR 67
 H.C. O'DONNELL WEATHER CLOUDY COUNTY SENECA
 R.C. RHOADES TEMP. 74° TOWNSHIP BLOOM
 _____ SECTION 7
 _____ T 1 N R 16 E

TYPE MONUMENT MAG NAIL
 ON SURFACE - ~~BELOW~~ ON
 LEFT - ☉ PAV'T - RIGHT ON
 _____ TO _____ EDGE PAVEMENT
 S.L.M. 328+78.86



Grid: Northing: 510527.977 Easting: 1811746.778

RECORD:
 STA. 329+54
 FD P.K./WASHER ATOP
 P.K./WASHER ATOP
 R.R.SPIKE
 FD P.K.NAIL
 5/30/02, DCH
 SET MAG/WASHER
 9/14/02, DCH
 FD MAG NAIL
 REF17
 2/5/16, JFO
 SET MAG/WASHER
 11/9/17, JFO



O.D.O.T. DISTRICT 2 SURVEY OFFICE

PERSONNEL _____

REFERENCE NO. 17

SHEET 6 OF 18

NOTES TR

H.C. DH

R.C. MM

DATE 5-30-02

WEATHER Cloudy

TEMP. 68°

ROUTE 67

COUNTY SENECA

TOWNSHIP BLOOM

SECTION 7

T. 1 N. 16 E.

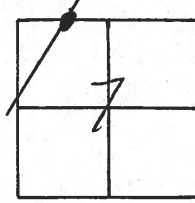
TYPE MONUMENT A-PIK B-MAG

ON SURFACE - ~~BELOW~~ Both

~~LEFT - & PAV'T. - RIGHT~~ Both

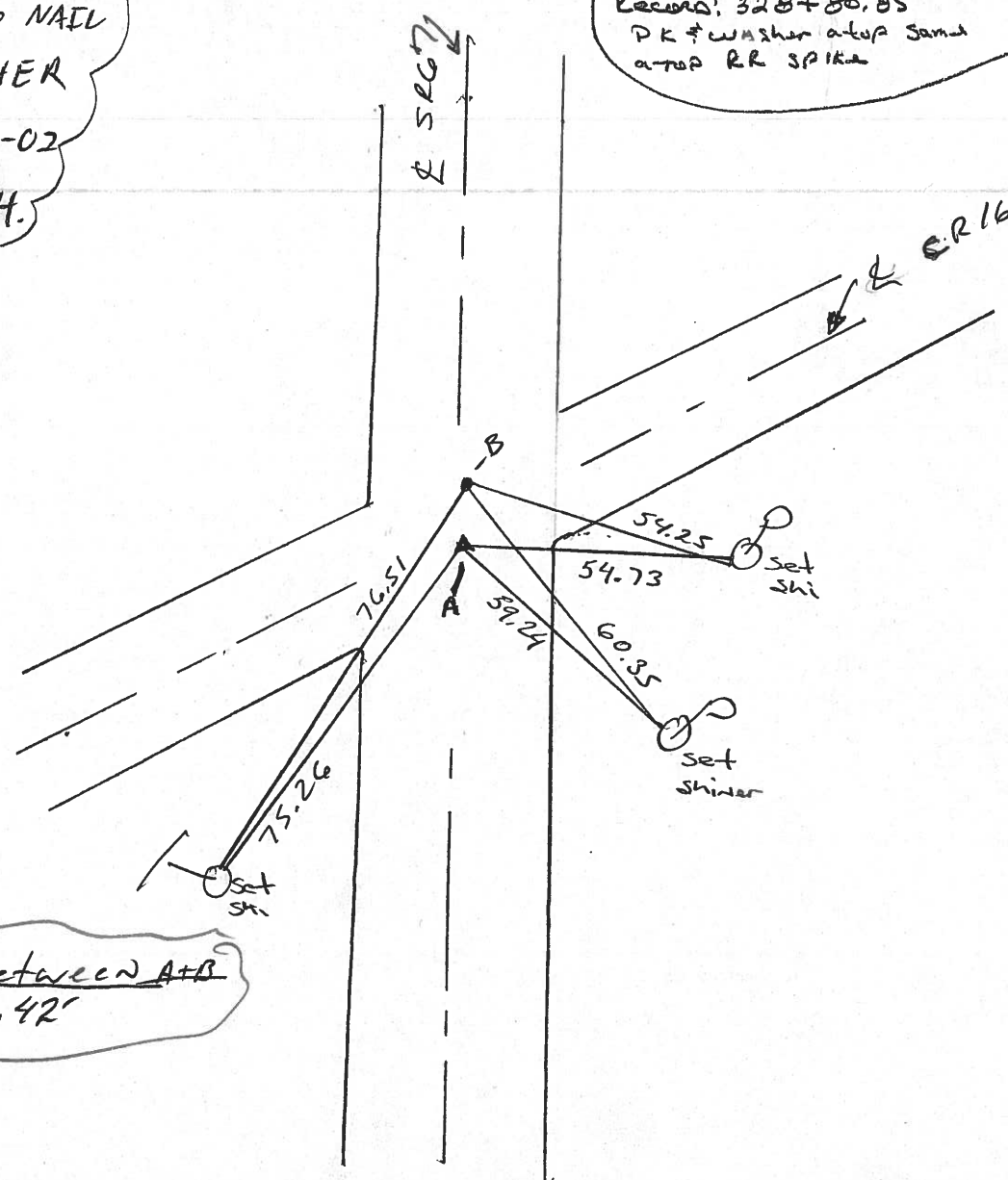
TO EDGE PAVEMENT

S.L.M. A-STA 329+54/B 329+55



SET MAG NAIL
9 WASHER
9-14-02
O.C.H.

Records: 328+80.85
PK # washer atop sand
at top RR spike



Dist Between A+B
1.42'

O.D.O.T. DISTRICT 2 SURVEY OFFICE

PERSONNEL

NOTES Cronin
 H.C. Ripple
 R.C. Geyman
Barbour

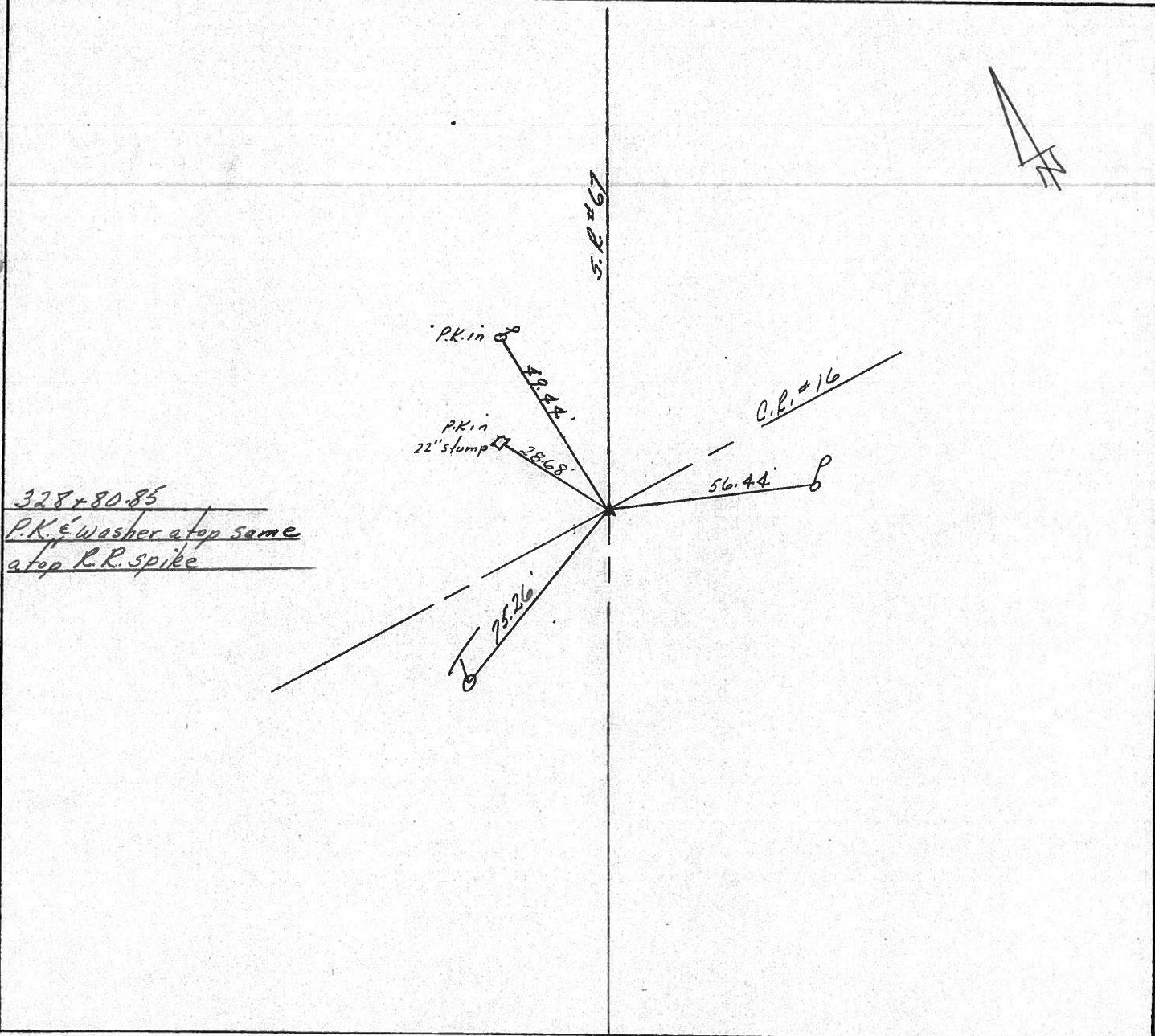
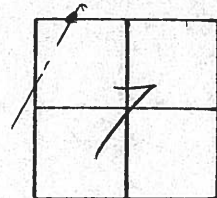
REFERENCE NO. 17

DRAWN 11/12/86
 DATE 11/10/86
 WEATHER sunny
 TEMP. 46°

SHEET 16 OF _____

ROUTE #67
 COUNTY Seneca
 TOWNSHIP Bloom
 SECTION 7
 T 1 N 16 E

TYPE MONUMENT P.K. & washer
 ON SURFACE - BELOW on surface
 LEFT - to Pav't. - RIGHT to Pav't.
 _____ TO _____ EDGE PAVEMENT
 S.L.M. _____



County SENECA S.R. #67

Township BLOOM

Section 7

T1N, R16E

Personnel CRONIN

RIPPLE

GEYMAN

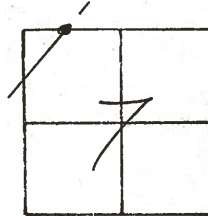
MOSSER

BARBOUR

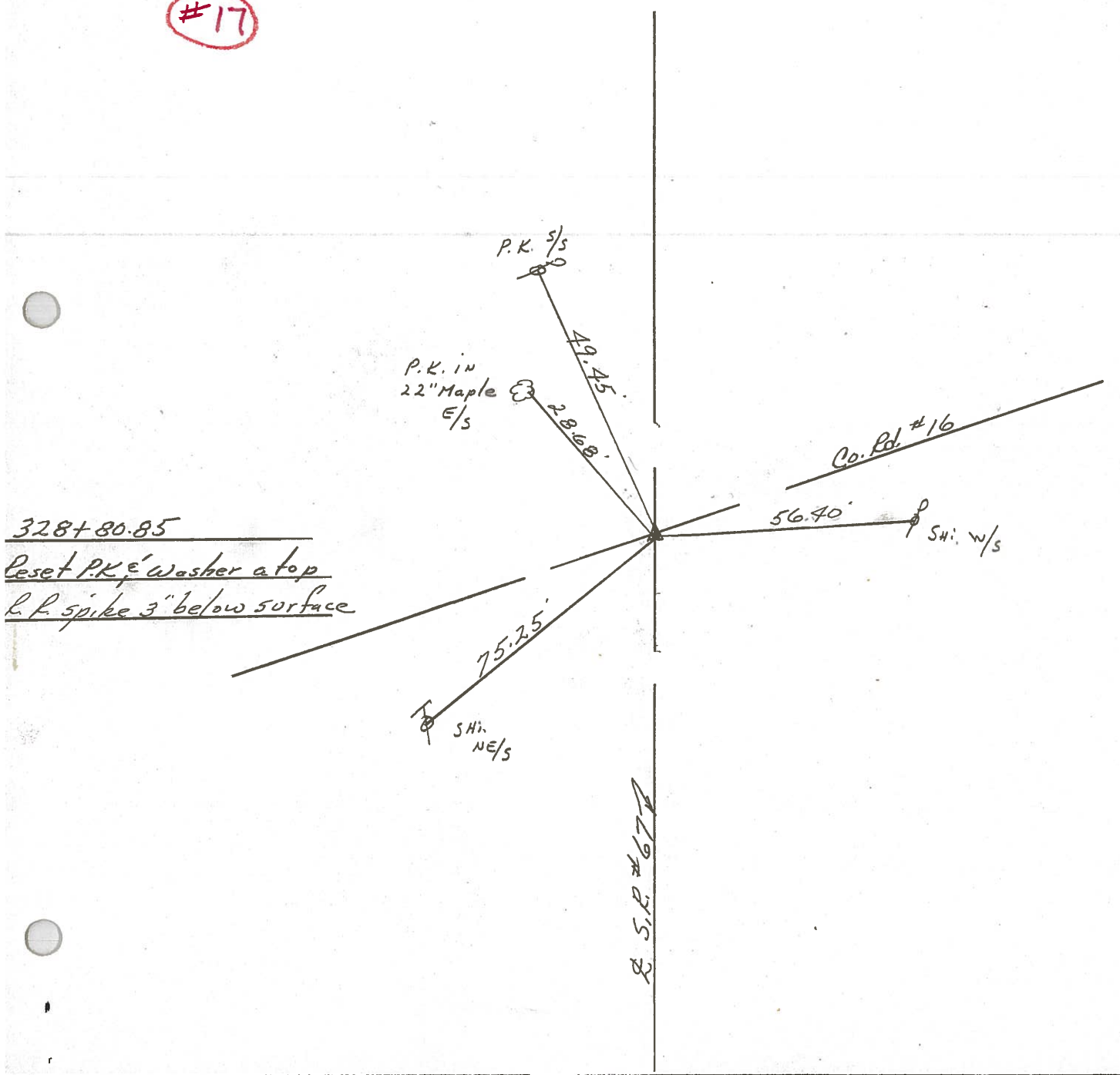
Date 8/10/81

Weather SUNNY

Temp. 75°



#17



County Seneca S.R. 67

Date 6-16-81

Township Bloom

Weather Fair

Section 6

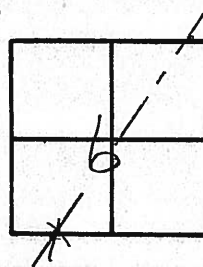
Temp. 85°

T/LN, R/16E

Personnel SHOFFMAN

HOUSEHOLDER

PARSONS

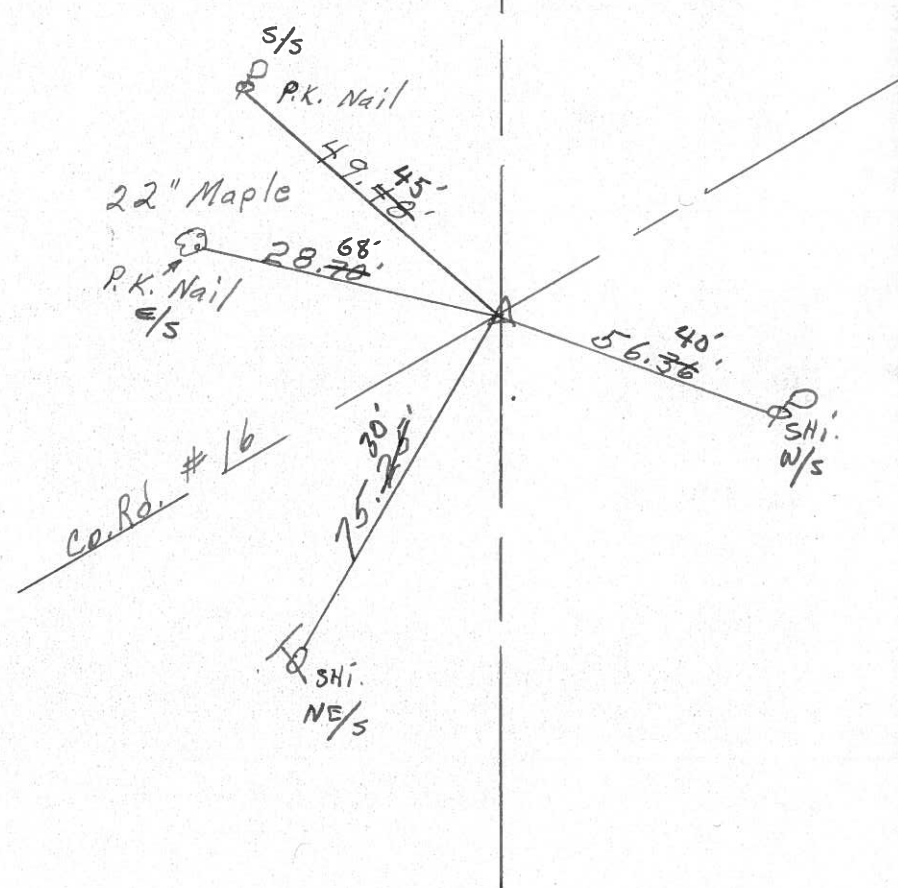


(17)



☩ S.R. #67

328 + 80.85
R.R. spk. on ☩ R/W
2" down
CTR. PAVT.



County Saratoga S.R. 67

Date 6-25-79 6-16-81

Township Bloom

Weather Fair ✓

Section 6

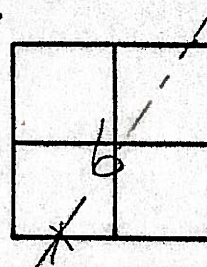
Temp. 70° +85°

T/LN, R/L/E

Personnel Schneider A

Masser H

Barbour



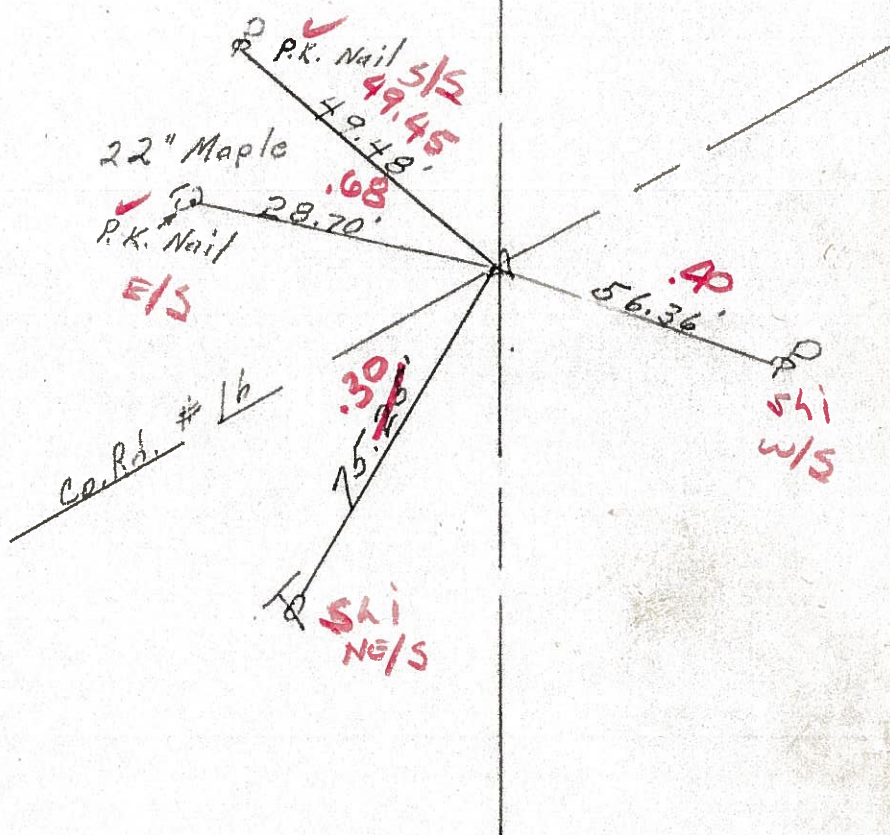
17



S.R. #67

328 + 80.85
Fdl. ✓ R.R. spl. on & R/W
✓ 2" down
ctr. PAVT.

PROJECT STA ± 329 + 16



PERSONNEL TITLE PERSONNEL TITLE

COUNTY Seneca DATE 12-27-68

S. R. # 67 WEATHER

SEC. TEMP.

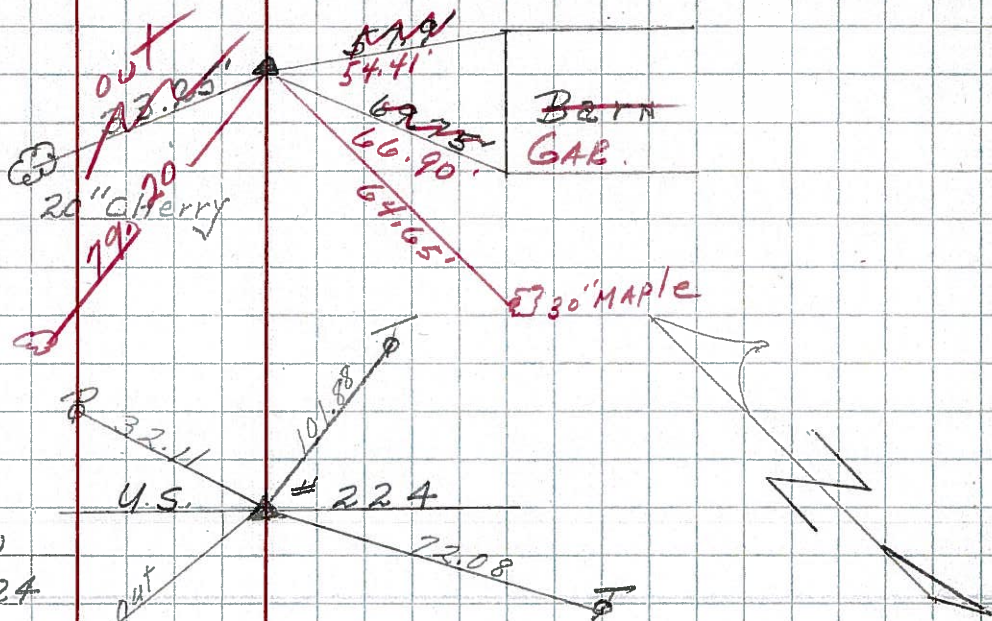
DESCRIPTION LEFT CENTER LINE RIGHT JOB NO.

20

FOUND 2/11/69
Sta. 401+34.7
R.R. SPIKE on E R/W
North of R.R.
spk 5 1/2 below surface

8422

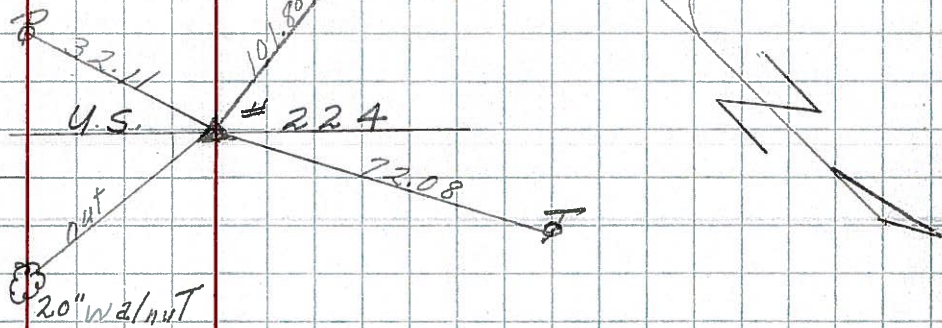
17" catalpa



19

Sta. 392+29.57
R.R. SPIKE on E of R/W
Intersection of US #224
& SR #67

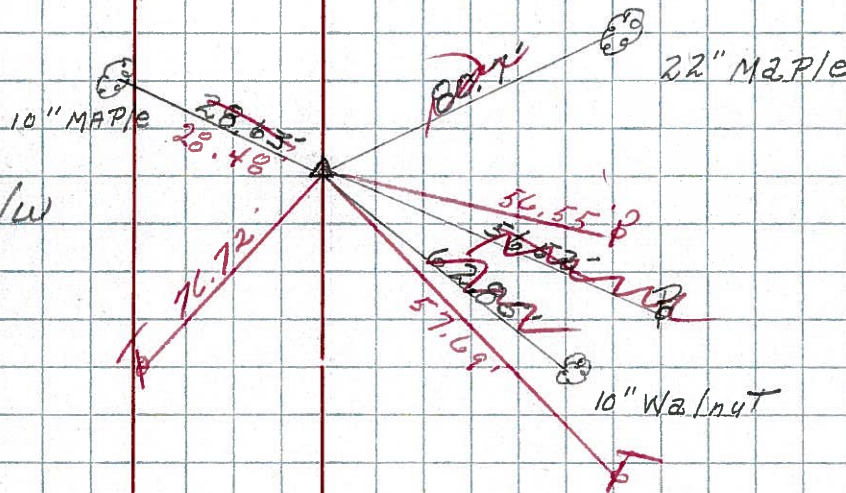
~~226~~
8421



17

Found 2/11/69
C.R. #16
Sta. 328+80.85
R.R. SPIKE on E of R/W
5" below surface

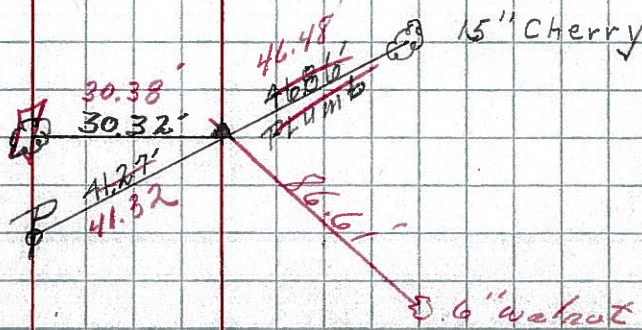
~~283~~
8420



16

FOUND 2/11/69
Sta. 303+56.5
R.R. SPIKE on E of R/W
5" below surface

~~282~~
8419



PERSONNEL TITLE PERSONNEL TITLE

COUNTY Seneca

DATE

S. R. 67

WEATHER

SEC

TEMP

DESCRIPTION

LEFT

CENTER LINE

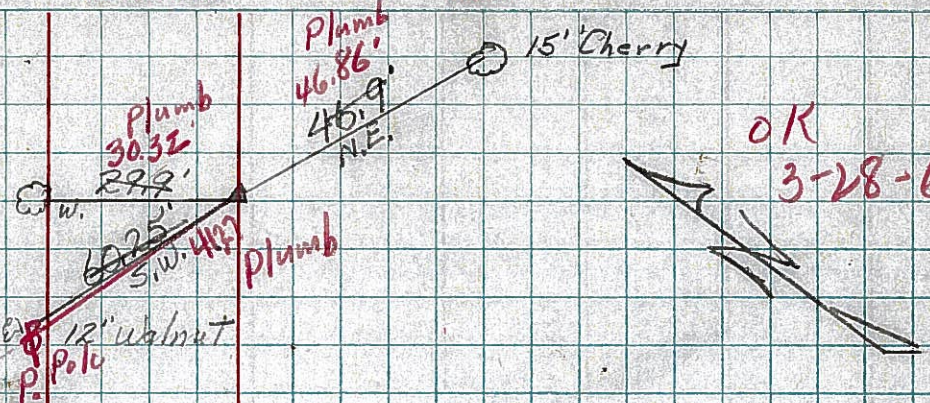
RIGHT

JOB NO.

16

Sta. 303+56.5
R.R. Spike end of R/W

282

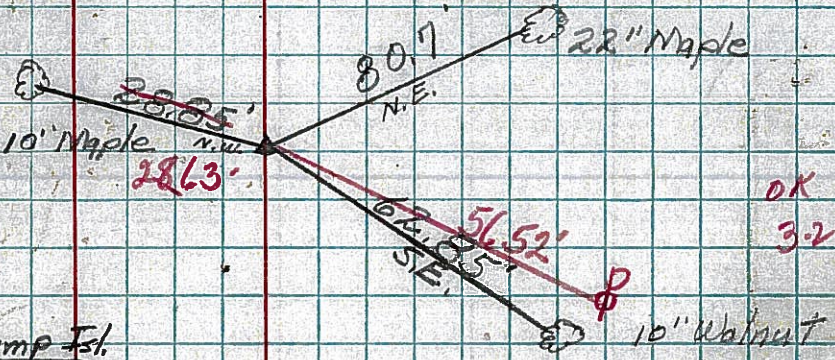


OK
3-28-60

17

Sta. 328+80.85
R.R. Spike end of R/W

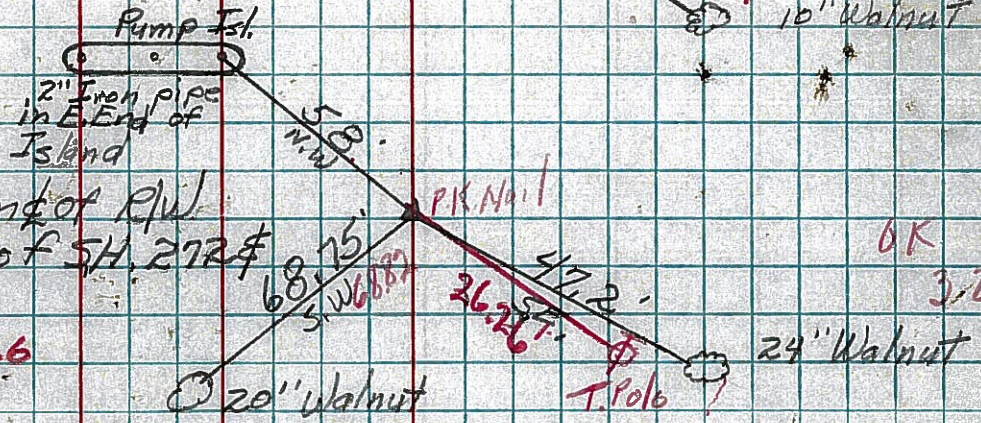
283



OK
3-28-60

Sta. 391+86
R.R. Spike end of R/W
Intersection of SH. 272 & SH. 267

226



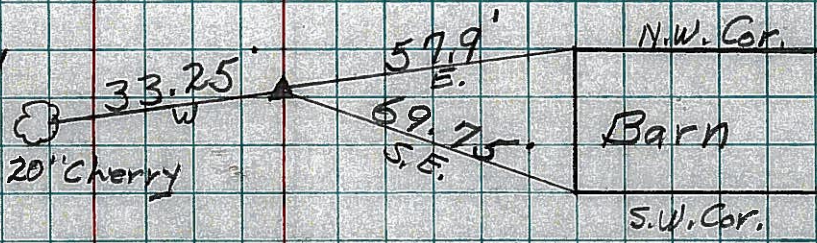
OK
3-29-60

Sec. X Ends Sec. P. starts

20

Sta. 401+34.7
R.R. Spike end of R/W
N. of R.R.

284



OK
3-29-60