

O.D.O.T. DISTRICT 2 SURVEY OFFICE (USE ONLY)

PERSONNEL

REFERENCE NO. 17 A

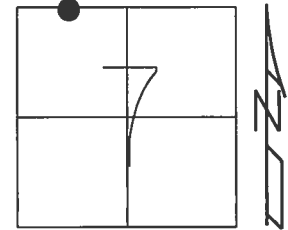
SHEET 10 OF 25

NOTES RHOADES  
 H.C. O'DONNELL  
 R.C. RHOADES

DATE 7/13/17  
 WEATHER CLOUDY  
 TEMP. 74°

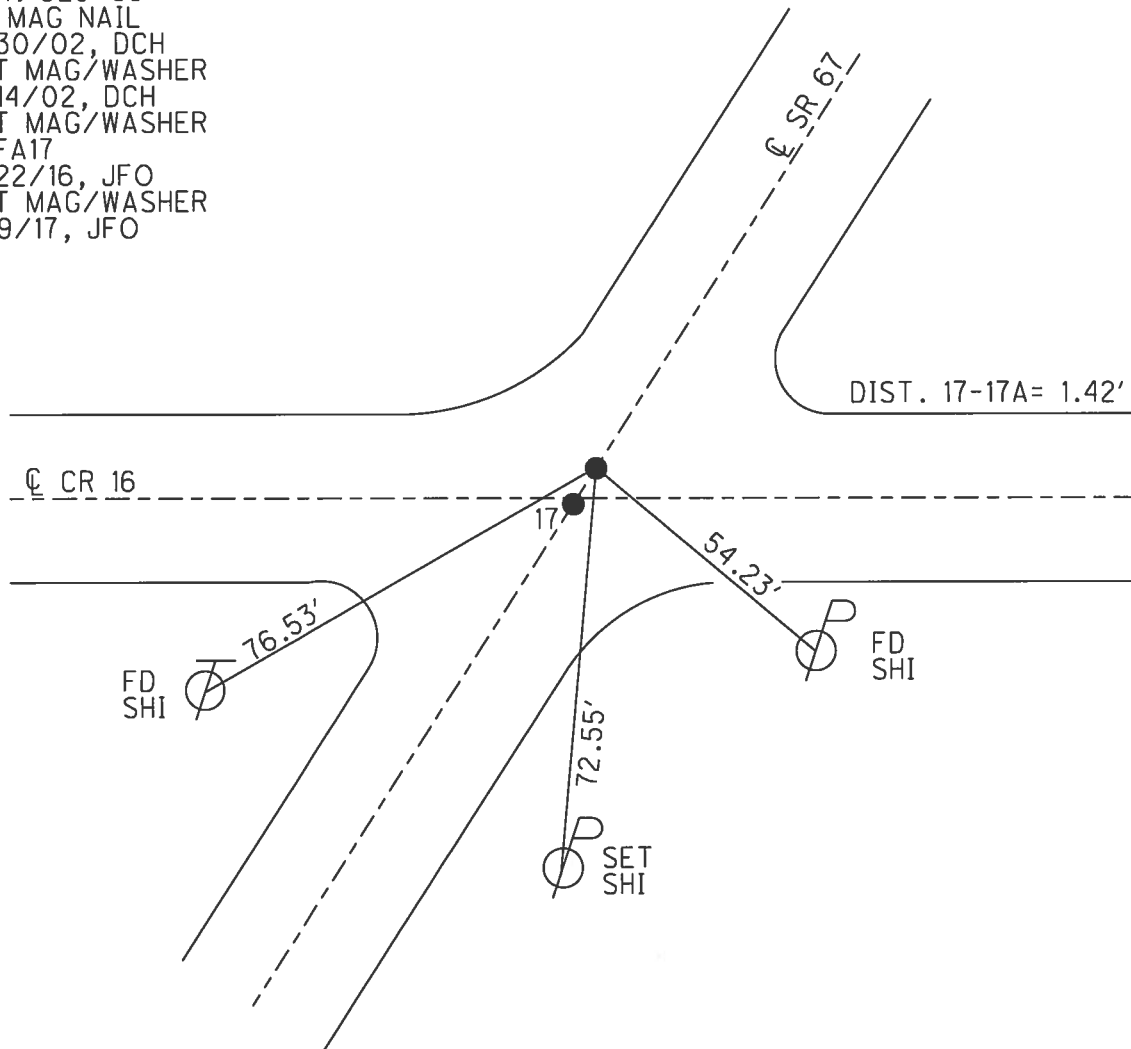
ROUTE SR 67  
 COUNTY SENECA  
 TOWNSHIP BLOOM  
 SECTION 7  
 T 1 N R 16 E

TYPE MONUMENT MAG/WASHER  
 ON SURFACE - ~~BELOW~~ ON  
 LEFT - ☉ PAV'T - RIGHT ON  
- TO - EDGE PAVEMENT  
 S.L.M. 328+80.28



Grid: Northing: 510529.016 Easting: 1811747.749

RECORD:  
 STA. 329+55  
 FD MAG NAIL  
 5/30/02, DCH  
 SET MAG/WASHER  
 9/14/02, DCH  
 SET MAG/WASHER  
 REFA17  
 2/22/16, JFO  
 SET MAG/WASHER  
 11/9/17, JFO



O.D.O.T. DISTRICT 2 SURVEY OFFICE

PERSONNEL \_\_\_\_\_

REFERENCE NO. 17

SHEET 6 OF 18

NOTES TR

H.C. DH

R.C. MM

DATE 5-30-02

WEATHER Cloudy

TEMP. 68°

ROUTE 67

COUNTY SENECA

TOWNSHIP BLOOM

SECTION 7

T. 1 N. 16 E.

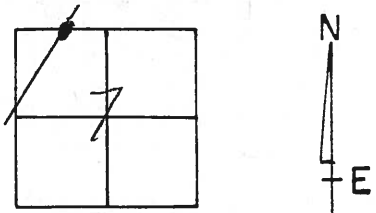
TYPE MONUMENT A-PK B-MAG

ON SURFACE -BELOW Both

~~LEFT~~ - ~~E~~ PAV'T. - ~~RIGHT~~ Both

TO EDGE PAVEMENT

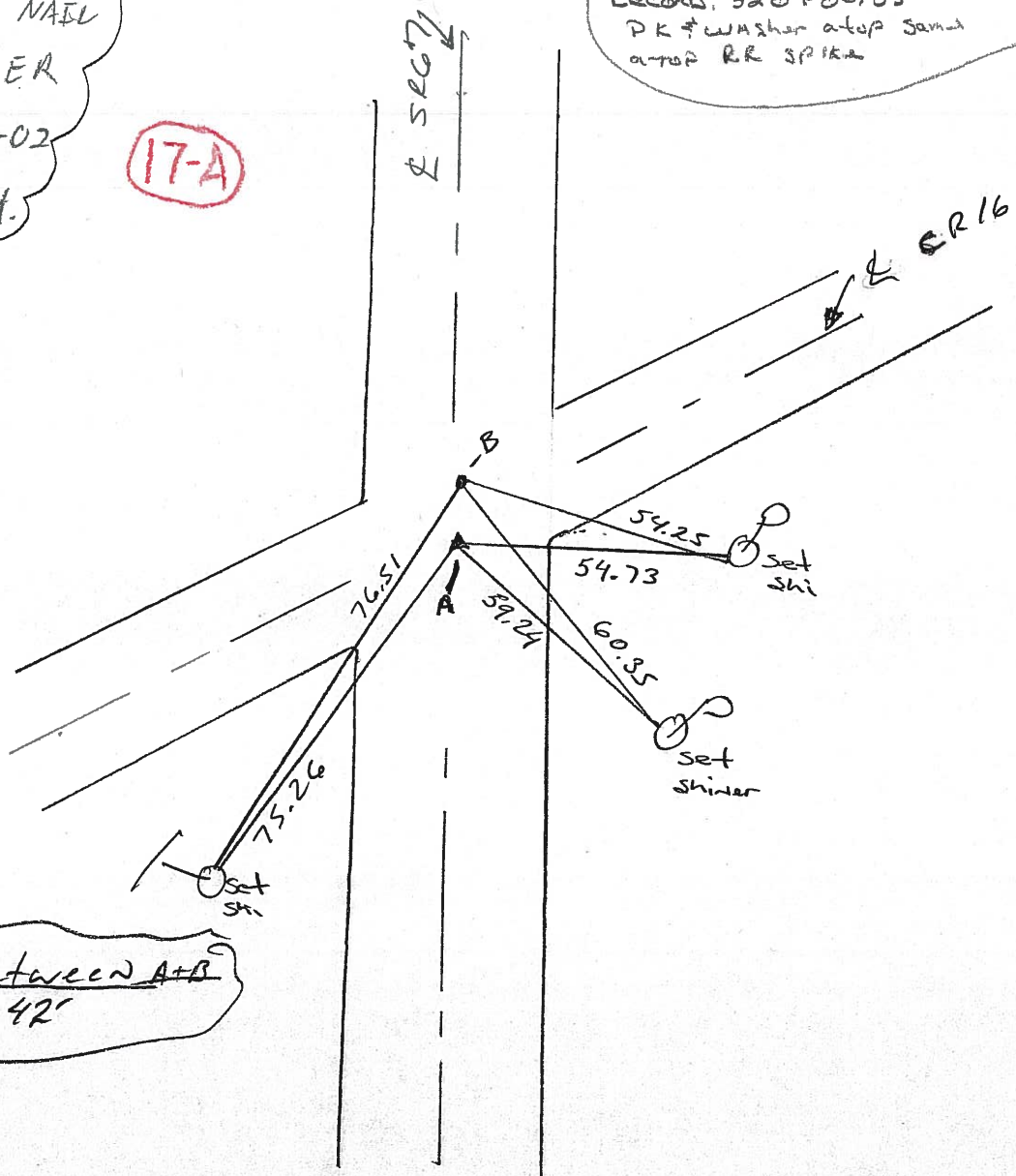
S.L.M. A-STA 329+54/B 329+55



SET MAG NAIL  
9 WASHER  
9-14-02  
O.C.H.

**17-A**

Records: 328+80.85  
PK # washer atop same  
atop RR spike



Dist Between A+B  
1.42'