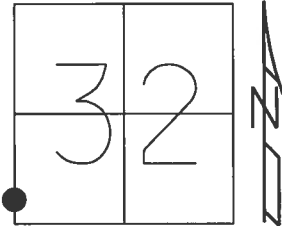


O.D.O.T. DISTRICT 2 SURVEY OFFICE (USE ONLY)

PERSONNEL _____ REFERENCE NO. 20 SHEET 14 OF 25

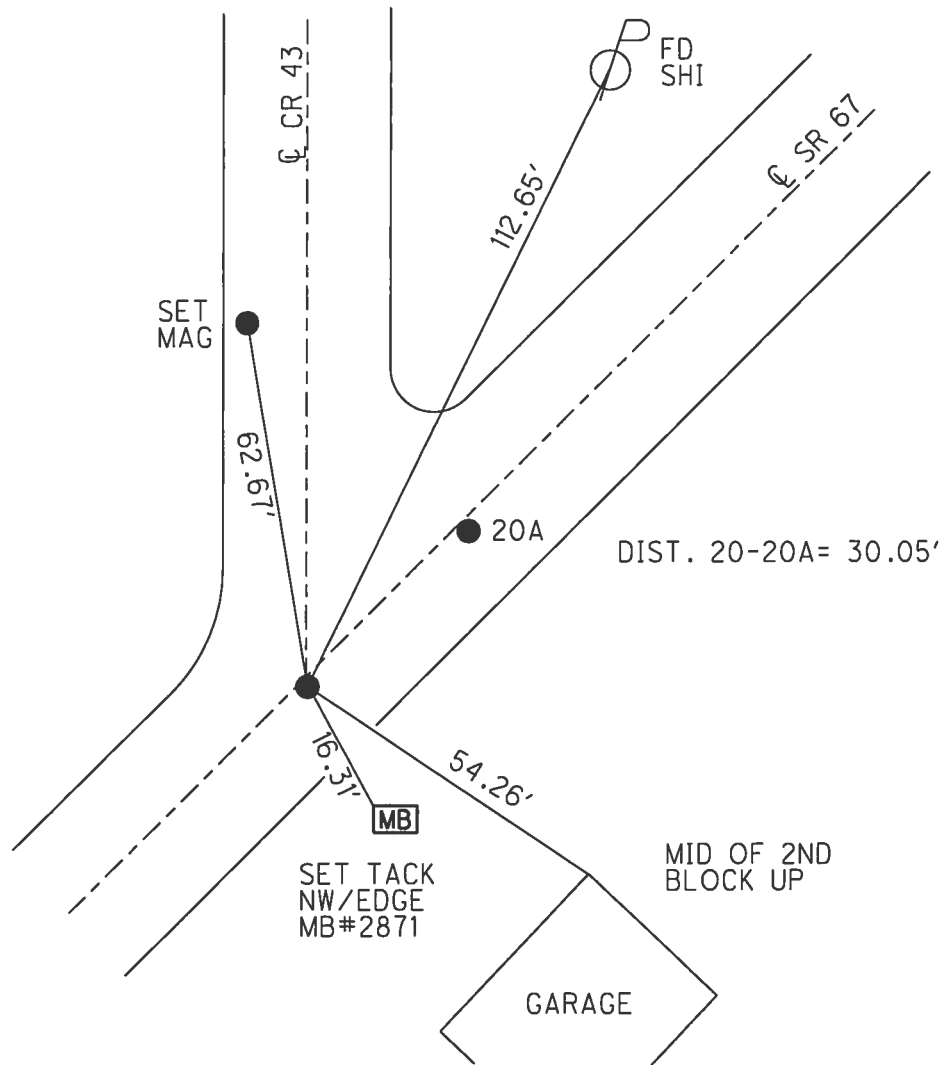
NOTES RHOADES DATE 7/13/17 ROUTE SR 67
 H.C. O'DONNELL WEATHER CLOUDY COUNTY SENECA
 R.C. RHOADES TEMP. 81° TOWNSHIP SCIPIO
 _____ SECTION 32
 _____ T 2 N R 16 E

TYPE MONUMENT MAG/WASHER
 ON SURFACE - ~~BELOW~~ ON _____
~~LEFT~~ - CL PAV'T - RIGHT 1.5'
9' TO RT EDGE PAVEMENT
 S.L.M. 401+29.20



Grid: Northing: 516504.641 Easting: 1815851.261

RECORD:
 P.K./WASHER ATOP
 R.R.SPIKE
 STA. 401+34.70
 FD P.K./WASHER
 5/30/02, DCH
 SET MAG/WASHER
 9/14/02, DCH
 FD MAG/WASHER
 REF20
 2/5/16, JFO
 SET MAG/WASHER
 11/14/17, JFO



O.D.O.T. DISTRICT 2 SURVEY OFFICE

PERSONNEL

REFERENCE NO. 20

SHEET 10 OF 18

NOTES ROUSOS

H.C. HOMAN

R.C. MICHALAK

DATE 5/30/02

WEATHER CLOUDY

TEMP. 68°

ROUTE 67

COUNTY SENECA

TOWNSHIP SCIPIO

SECTION 32

T 2 N R 15 E

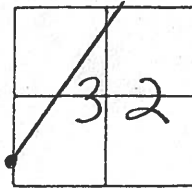
TYPE MONUMENT PK. & WASHER

ON SURFACE - ~~BELOW~~

~~LEFT~~ - ℄ PAV'T. - RIGHT .5'

9' TO RT. EDGE PAVEMENT

S.L.M. _____

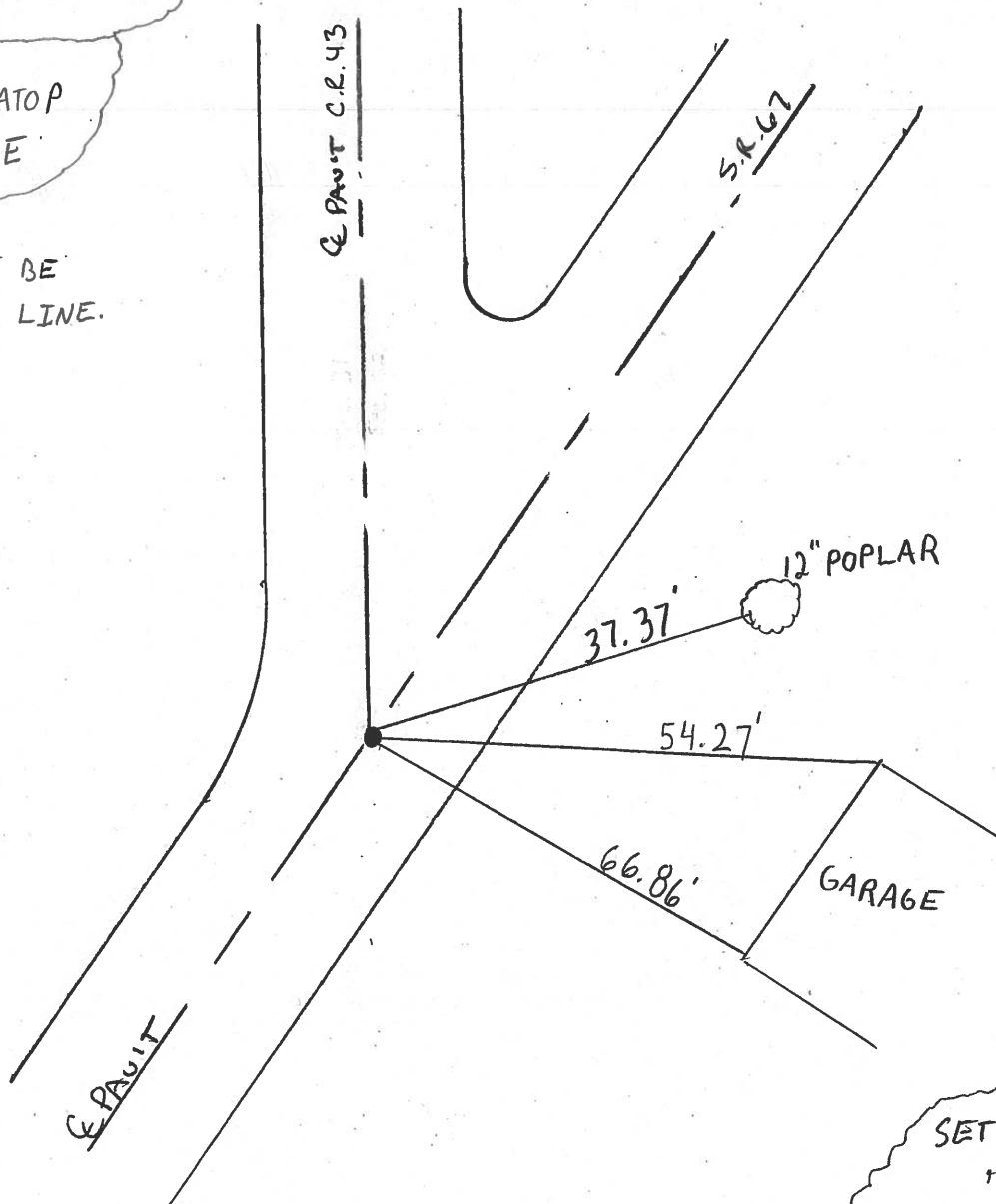


RECORD: STA. 401+34.70

NOTE:

PK & WASHER ATOP
R.R. SPIKE

NOTE: MAY NOT BE
ON SECTION LINE.



SET MAG NAIL
& WASHER

9-14-02 D.C.H.

O.D.O.T. DISTRICT 2 SURVEY OFFICE

PERSONNEL

REFERENCE NO. 20

SHEET 1 OF 9

NOTES CHENEY

H.C. BARBOUR

R.C. RIPPLE

GEYMAN

DATE 12-10-1991

WEATHER CLOUDY

TEMP. 35°

ROUTE 67

COUNTY SENECA

TOWNSHIP SCIPIO

SECTION 31 & 32

TR N R 15 E

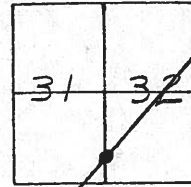
TYPE MONUMENT SET PK/WASHER

ON SURFACE - ~~BELOW~~

~~LEFT~~ & PAV'T. - RIGHT 0.5'

9' TO RT. EDGE PAVEMENT

S.L.M.



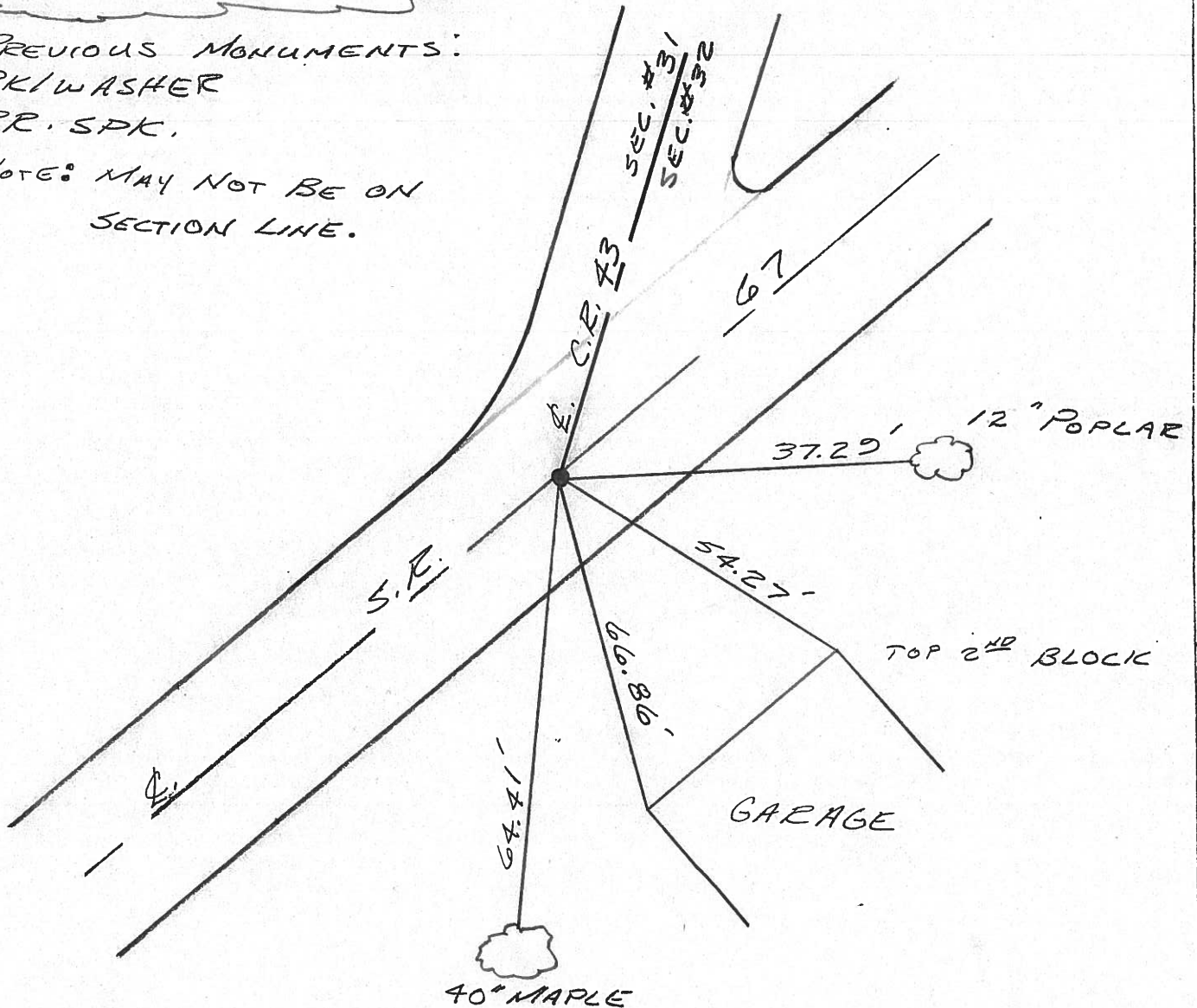
RECORD STA. 401+34.70

PREVIOUS MONUMENTS:

P.K./WASHER

RR. SPK.

*NOTE: MAY NOT BE ON SECTION LINE.



County Seneca S.R. #67

Date 6/08/82

Township Scipio

Weather sunny

Section 31

Temp. 80°

T2N, R15E

Personnel Cranin

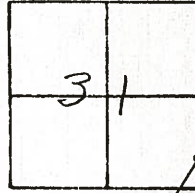
Ripple

Geyman

Mosser

Barbour

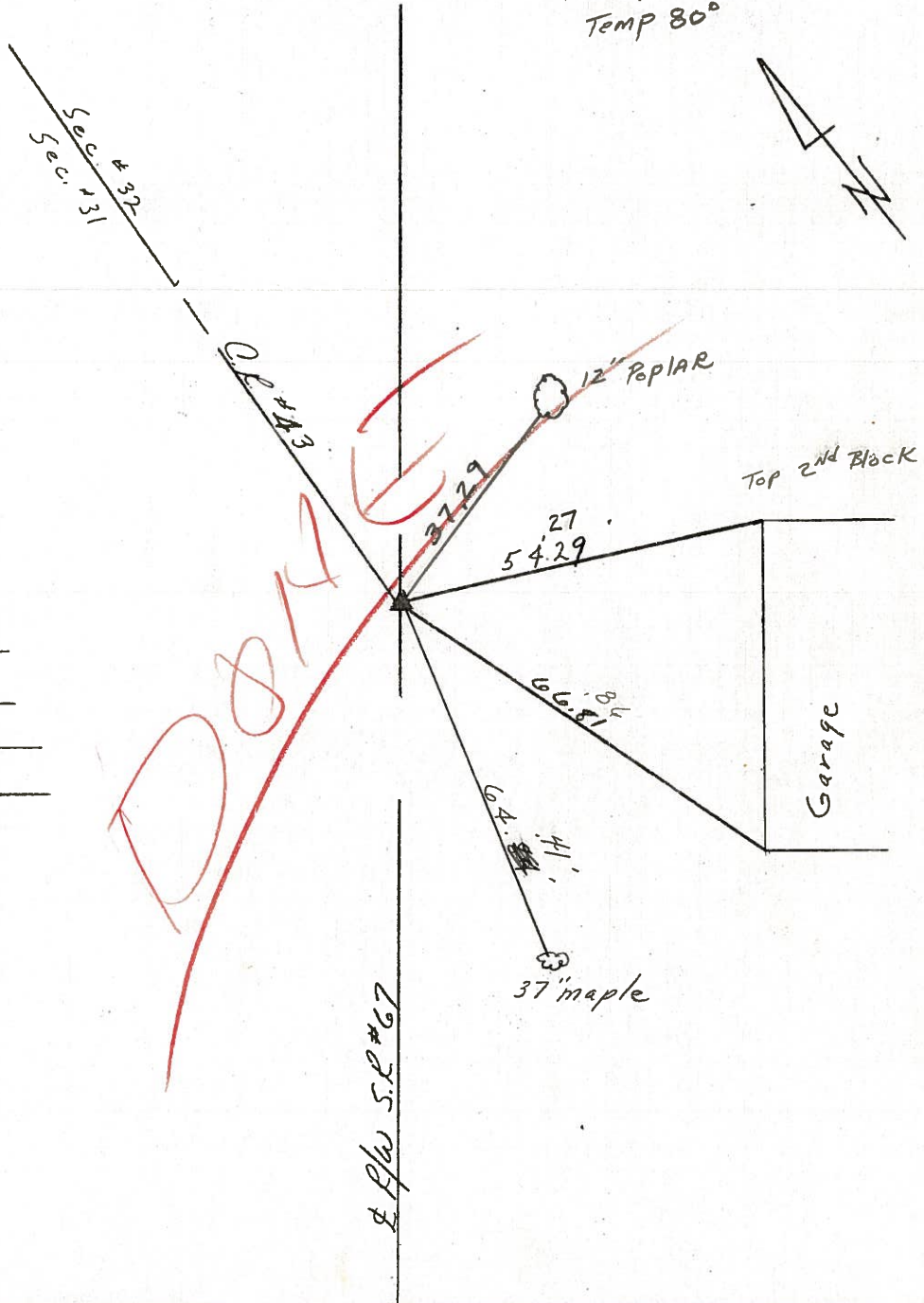
(20)



12-10-91
cloudy 35°
CH @
B-HC
R-RC
G-P
0.5' @
9' CT E/P.

SET PK/WASH

5/21/91
Temp 80°



201+3470

Reset P.K. & Washer

Top R.R. spike

May or may not be on

Section line

DO NOT

E/P/W S.R. #67

O.D.O.T. DISTRICT 2 SURVEY OFFICE

PERSONNEL

REFERENCE NO. 20

SHEET OF

NOTES Loehrke

H.C. BARNHISEL

R.C. SOCKMAN

DATE 10-26-87

WEATHER CLEAR

TEMP. +45

ROUTE 67

COUNTY SENECA

TOWNSHIP Scio

SECTION 32

T2 N R 15 E

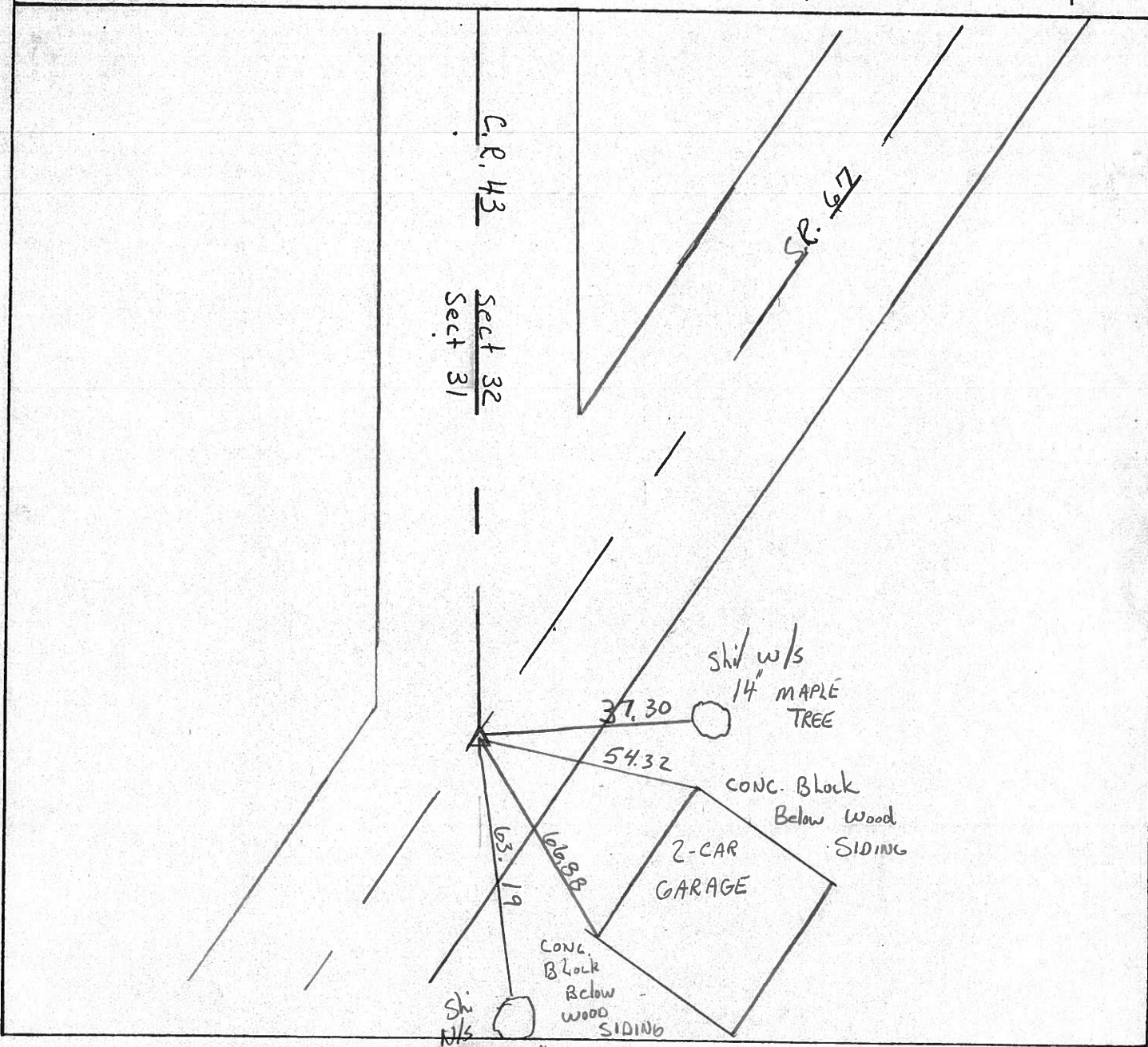
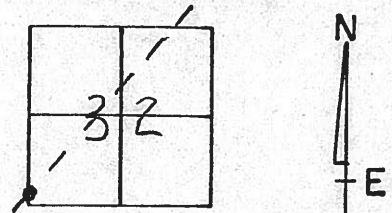
TYPE MONUMENT P.K. & WASHER

ON SURFACE - ~~BELOW~~

~~LEFT~~ - 0 PAV'T. - RIGHT 0.7

9.3 TO RT EDGE PAVEMENT

S.L.M.



County Seneca S.R. #67

Date 6/08/82

Township Scipio

Weather sunny

Section 31

Temp. 80°

T2N, R15E

Personnel Cronin

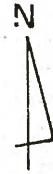
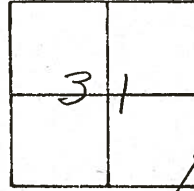
Ripple

Geyman

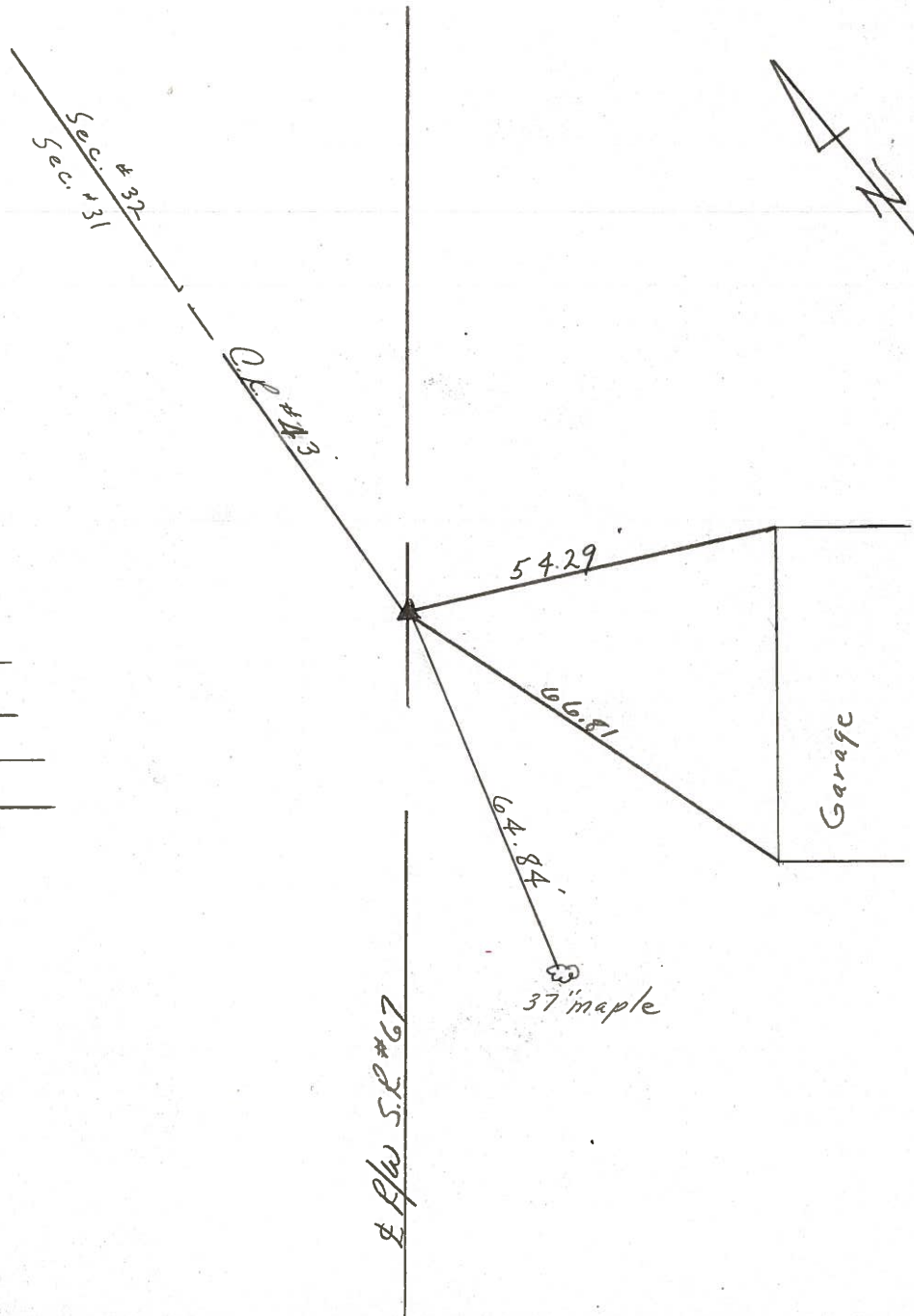
Mosser

Barbour

#20



401 + 3470
Reset P.K. & Washer
atop R.R. spike
May or may not be on
Section line



R/W S.R. #67

Garage

37' maple

County Seneca S.R. # 67

Date 7-12-79

Township Scipia

Weather Sunny

Section 31

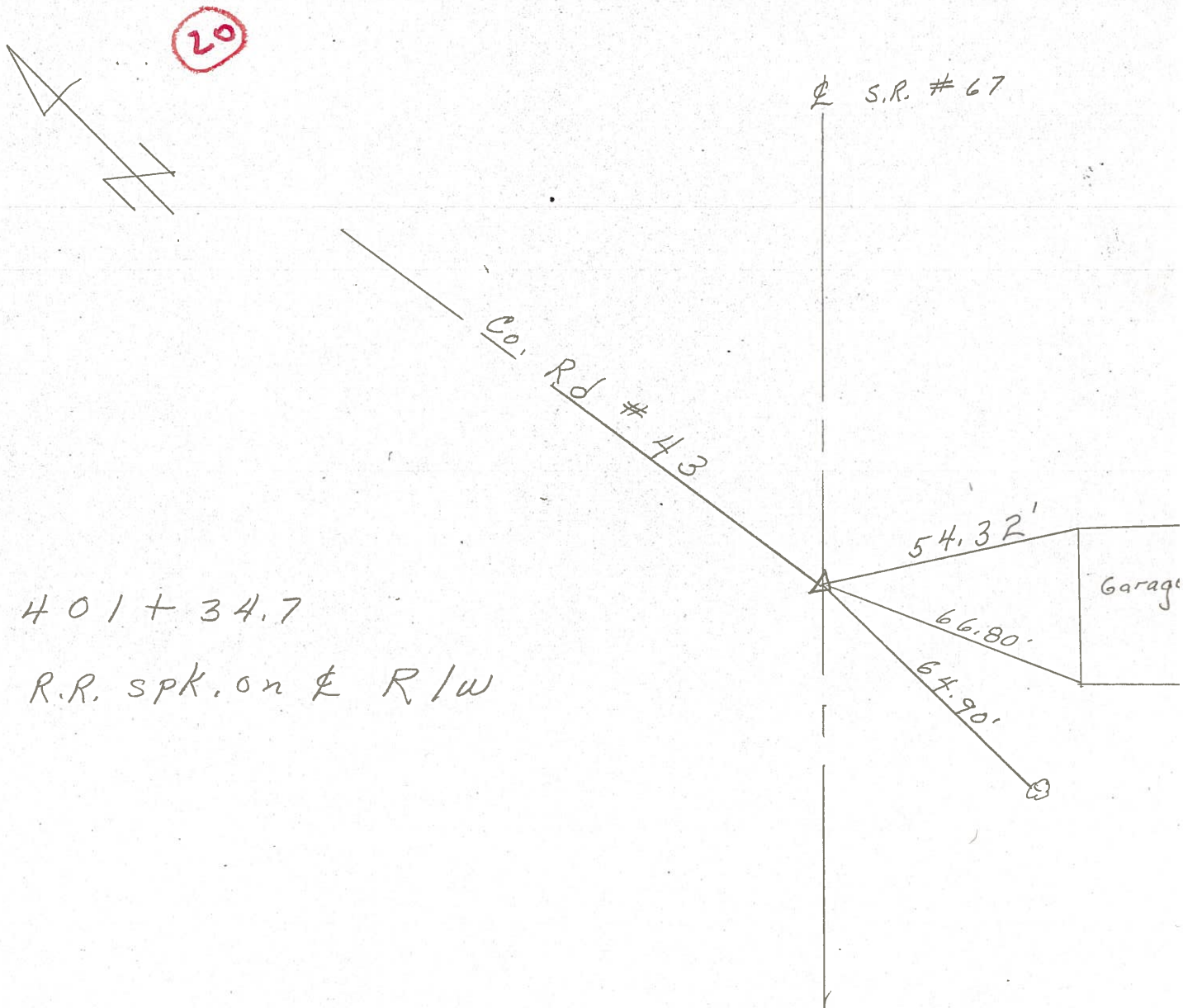
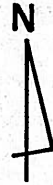
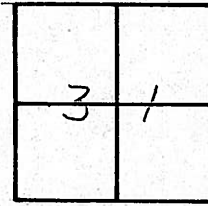
Temp. 78°

T2N, R16E

Personnel Schneider

Mosser

Barbour



PERSONNEL TITLE PERSONNEL TITLE

COUNTY Seneca DATE 12-21-68

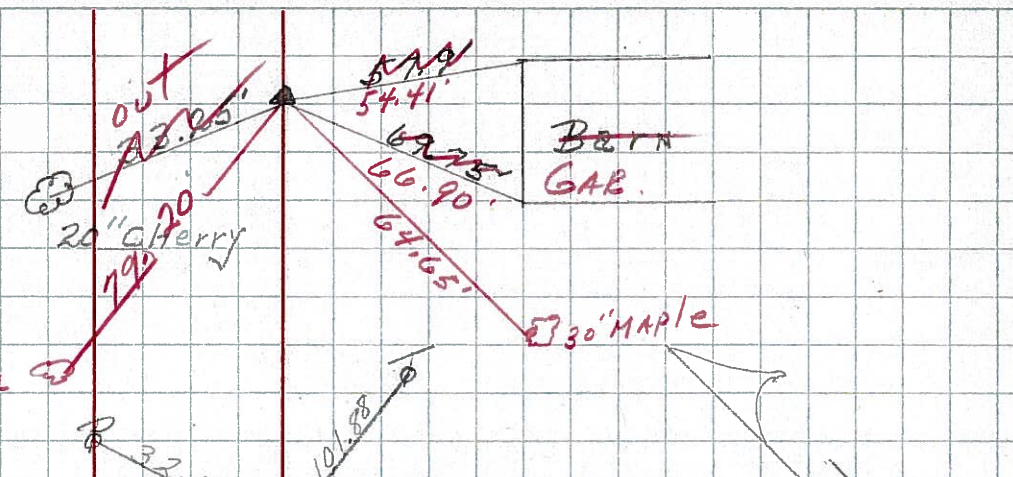
S. R. # 67 WEATHER

SEC. TEMP.

DESCRIPTION LEFT CENTER LINE RIGHT JOB NO.

20

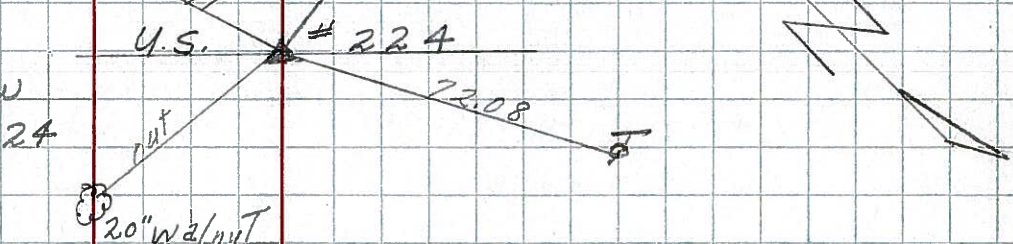
FOUND 2/11/69
STA. 401+34.7
R.R. SPIKE on E of R/W
North of R.R.
spk 5 1/2 below surface



8422 17' catalpa

19

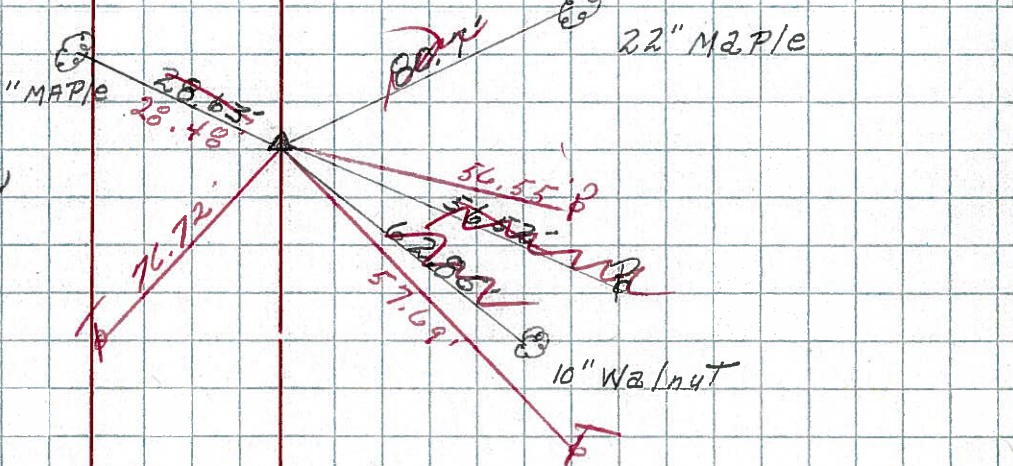
STA. 392+29.57
R.R. SPIKE on E of R/W
Intersection of US #224
& SR #67



~~226~~
8421

17

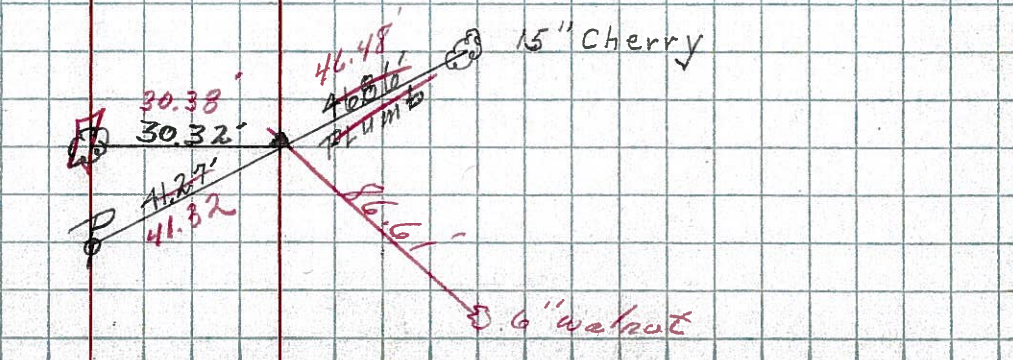
Found 2/11/69
C.R. #16
STA. 328+80.85
R.R. SPIKE on E of R/W
5" below surface



~~283~~
8420

16

FOUND 2/11/69
STA. 303+56.5
R.R. SPIKE on E of R/W
5" below surface



~~282~~
8419

PERSONNEL TITLE PERSONNEL TITLE

COUNTY Seneca

DATE

S. R. 67

WEATHER

SEC.

TEMP.

DESCRIPTION

LEFT

CENTER LINE

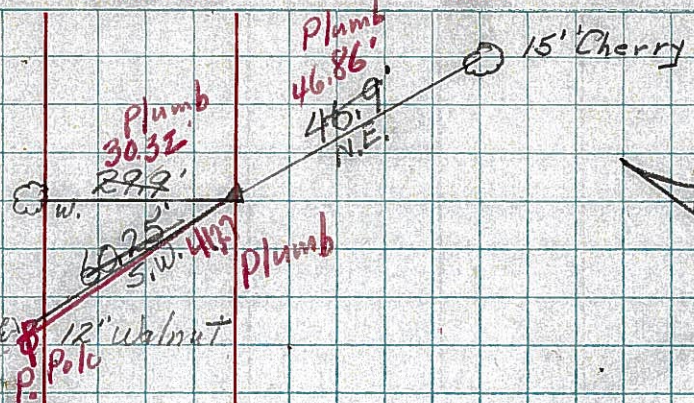
RIGHT

JOB NO.

16

Sta. 303+56.5
R.R. Spike end of R/W

282

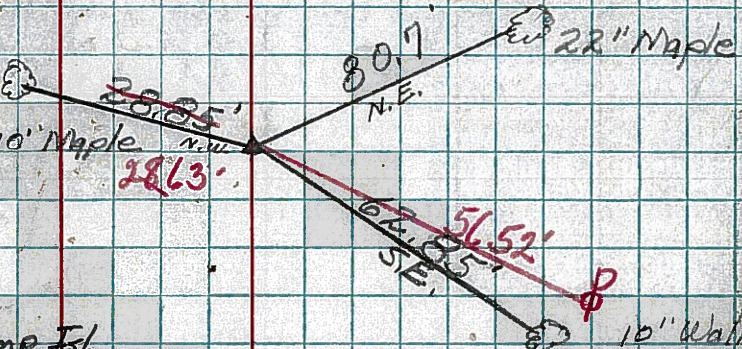


OK
3-28-60

17

Sta. 328+80.85
R.R. Spike end of R/W

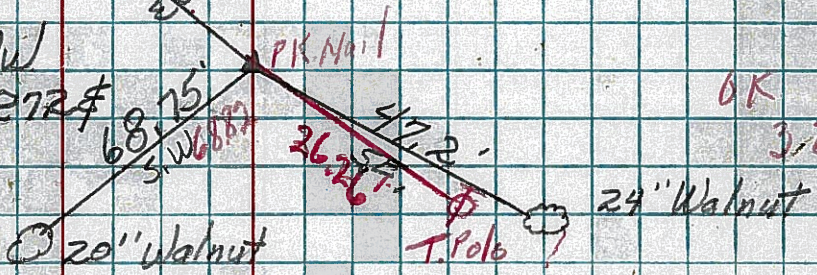
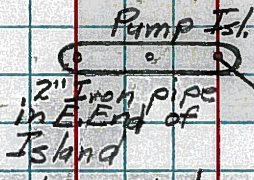
283



OK
3-28-60

Sta. 391+86
R.R. Spike end of R/W
Intersection of SH. 272 & SH. 267

226



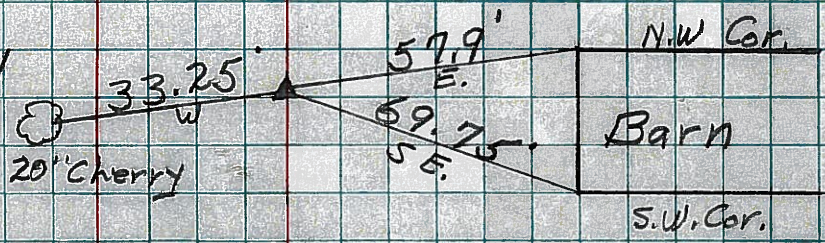
OK
3-29-60

Sec. X Ends Sec. P. Starts

20

Sta. 401+34.7
R.R. Spike end of R/W
N. of R.R.

284



OK
3-29-60