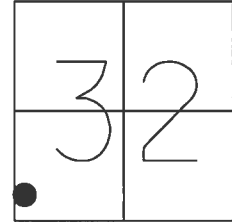


O.D.O.T. DISTRICT 2 SURVEY OFFICE (USE ONLY)

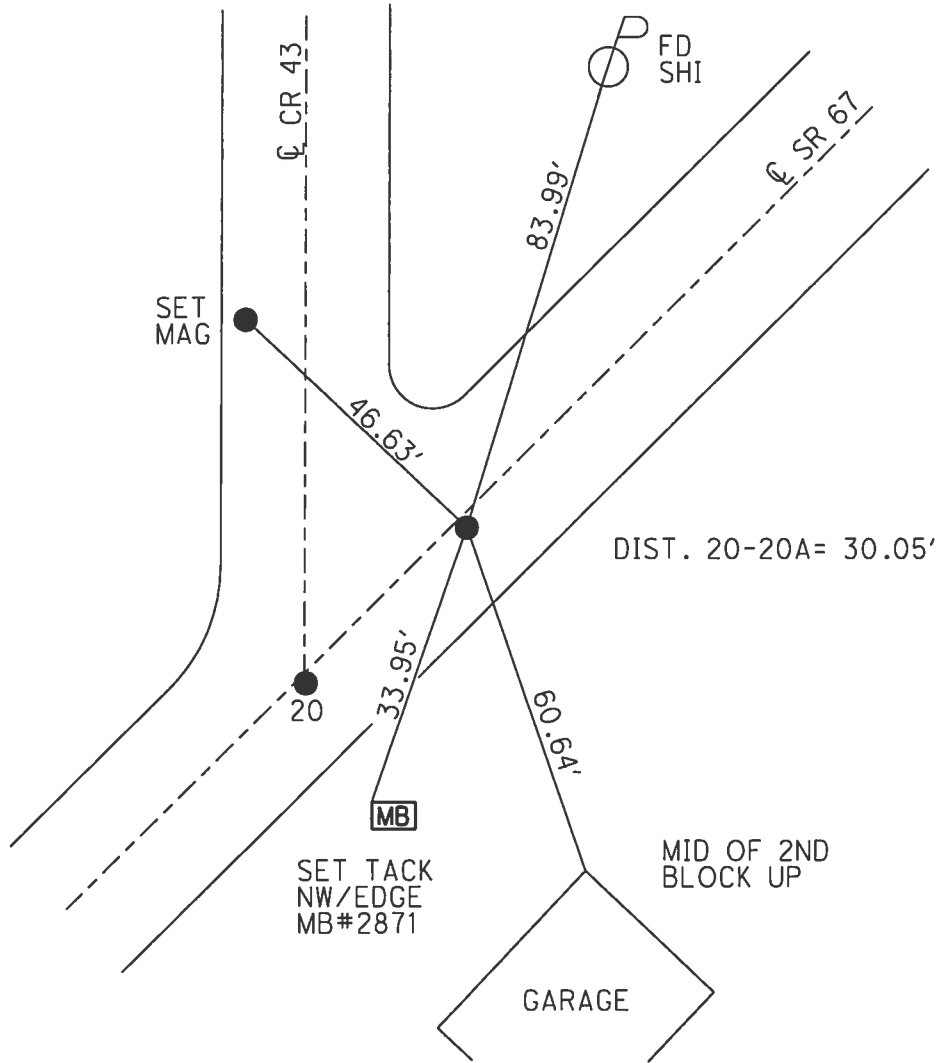
PERSONNEL _____ REFERENCE NO. 20 A SHEET 15 OF 25
 NOTES RHOADES DATE 7/13/17 ROUTE SR 67
 H.C. O'DONNELL WEATHER CLOUDY COUNTY SENECA
 R.C. RHOADES TEMP. 81° TOWNSHIP SCIPIO
 _____ SECTION 32
 _____ T 2 N R 16 E

TYPE MONUMENT MAG/WASHER
 ON SURFACE - ~~BELOW~~ ON _____
~~LEFT~~ - ℄ PAV'T - RIGHT 2.0'
9' TO RT EDGE PAVEMENT
 S.L.M. 401+59.25



Grid: Northing: 516529.513 Easting: 1815868.108

RECORD:
 STA. 402+81.98
 FD P.K./WASHER
 5/30/02, DCH
 SET MAG/WASHER
 9/14/02, DCH
 FD MAG/WASHER
 REFA20
 2/5/16, JFO
 SET MAG/WASHER
 11/14/17, JFO



O.D.O.T. DISTRICT 2 SURVEY OFFICE

PERSONNEL

REFERENCE NO. 20 A

SHEET 11 OF 18

NOTES ROUSOS

H.C. HOMAN

R.C. MICHALAK

DATE 5-30-02

WEATHER CLOUDY

TEMP. 68°

ROUTE 67

COUNTY SENECA

TOWNSHIP SCIPLO

SECTION 32

T2 N R 16 E

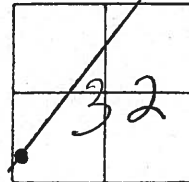
TYPE MONUMENT PK, WASHER

ON SURFACE - ~~BELOW~~

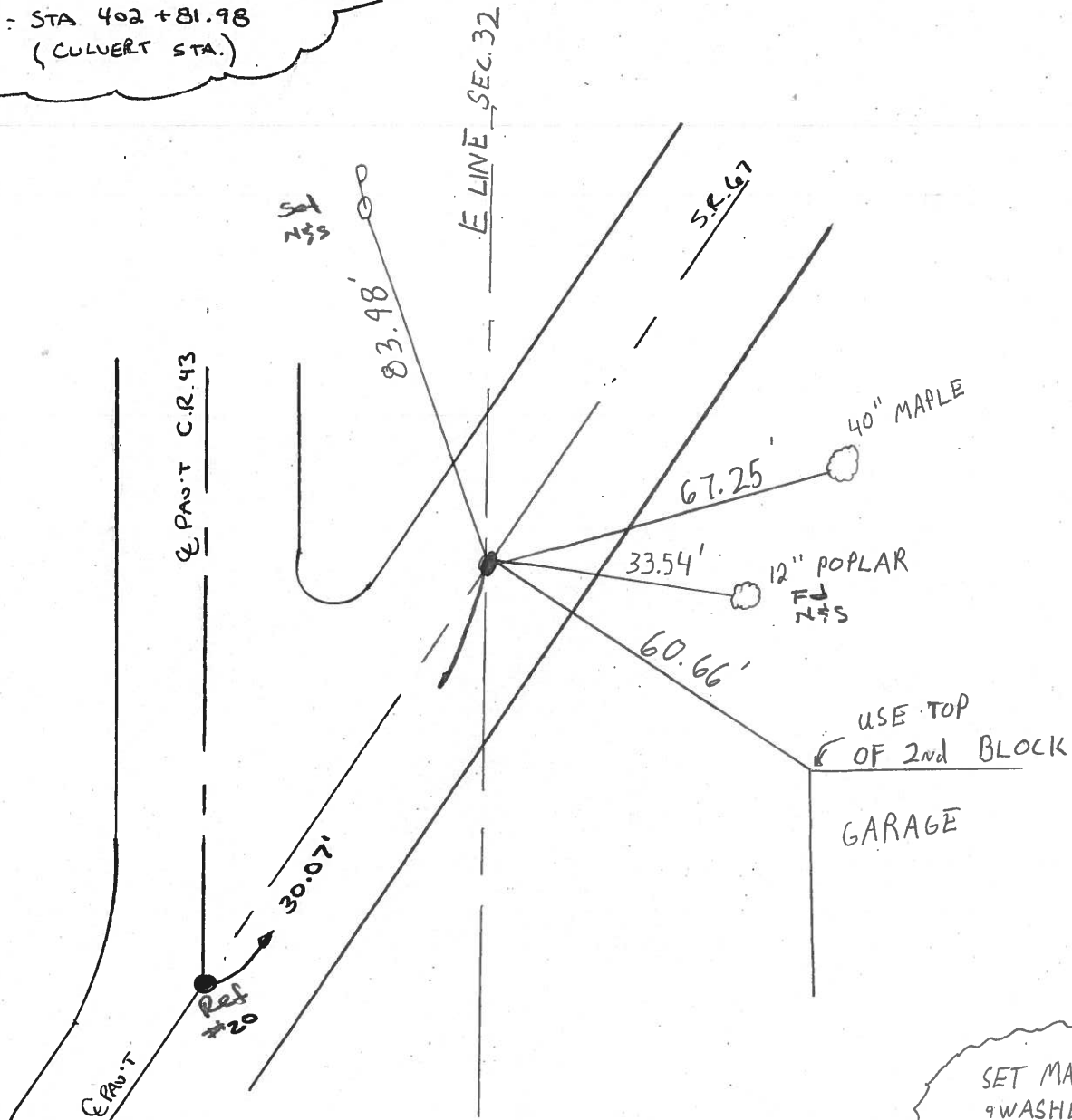
LEFT - & PAV'T. - RIGHT 0.5'

9 TO RT. EDGE PAVEMENT

S.L.M. _____



RECORD: STA 402+81.98
(CULVERT STA.)



USE TOP
OF 2nd BLOCK
GARAGE

SET MAG NAIL
9WASHER
9-4-02 D.C.H.

Drawn B. Garrett

O.D.O.T. DISTRICT 2 SURVEY OFFICE

PERSONNEL

REFERENCE NO. 20A

SHEET 1 OF 1

NOTES Cheney

H.C. Geyman

R.C. Luce

Heck

DATE 6/24/93

WEATHER Nice

TEMP. 80°

ROUTE SR 67

COUNTY Seneca

TOWNSHIP Scipio

SECTION 32

T 2 N R 16 E

TYPE MONUMENT PK / Washer

ON SURFACE - ~~BELOW~~

LEFT - & PAV'T. - RIGHT 0.5'

9' TO Rt. EDGE PAVEMENT

S.L.M. 402+81.98 (Culvert Sta.)

