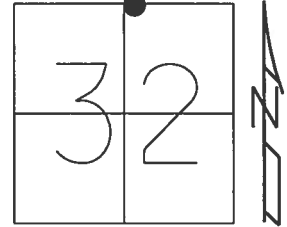


O.D.O.T. DISTRICT 2 SURVEY OFFICE (USE ONLY)

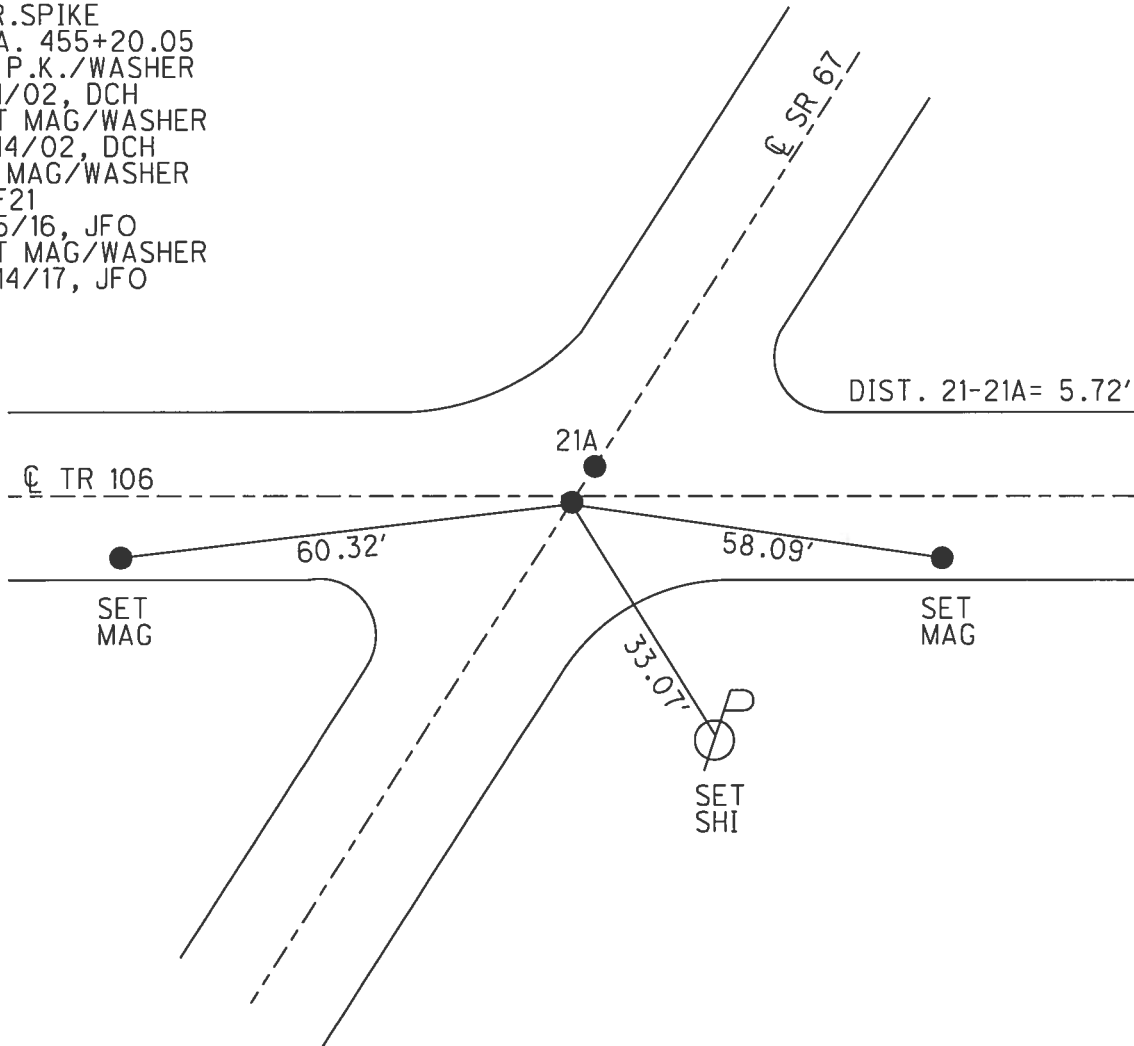
PERSONNEL \_\_\_\_\_ REFERENCE NO. 21 SHEET 17 OF 25  
 NOTES RHOADES DATE 7/13/17 ROUTE SR 67  
 H.C. O'DONNELL WEATHER CLOUDY COUNTY SENECA  
 R.C. RHOADES TEMP. 76° TOWNSHIP SCIPIO  
 \_\_\_\_\_ SECTION 32  
 \_\_\_\_\_ T 2 N R 16 E

TYPE MONUMENT MAG/WASHER  
 ON SURFACE - ~~BELOW~~ ON  
 LEFT - ☉ PAV'T - ~~RIGHT~~ 0.5'  
 \_\_\_\_\_ TO \_\_\_\_\_ EDGE PAVEMENT  
 S.L.M. 455+13.41



Grid: Northing: 520960.134 Easting: 1818874.233

RECORD:  
 P.K./WASHER ATOP  
 R.R.SPIKE  
 STA. 455+20.05  
 FD P.K./WASHER  
 6/1/02, DCH  
 SET MAG/WASHER  
 9/14/02, DCH  
 FD MAG/WASHER  
 REF21  
 2/5/16, JFO  
 SET MAG/WASHER  
 11/14/17, JFO



# O.D.O.T. DISTRICT 2 SURVEY OFFICE

PERSONNEL

REFERENCE NO. 21

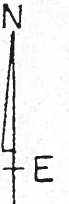
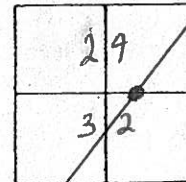
SHEET 13 OF 18

NOTES HOMAN  
 H.C. MOSSER  
 R.C. BARNHISEL  
CANTERBURY  
ROUSOS

DATE 6/1/02  
 WEATHER SUNNY  
 TEMP. 75°

ROUTE 67  
 COUNTY SENECA  
 TOWNSHIP SCIPHO  
 SECTION 29 + 32  
 T. 2 N. R. 15 E.

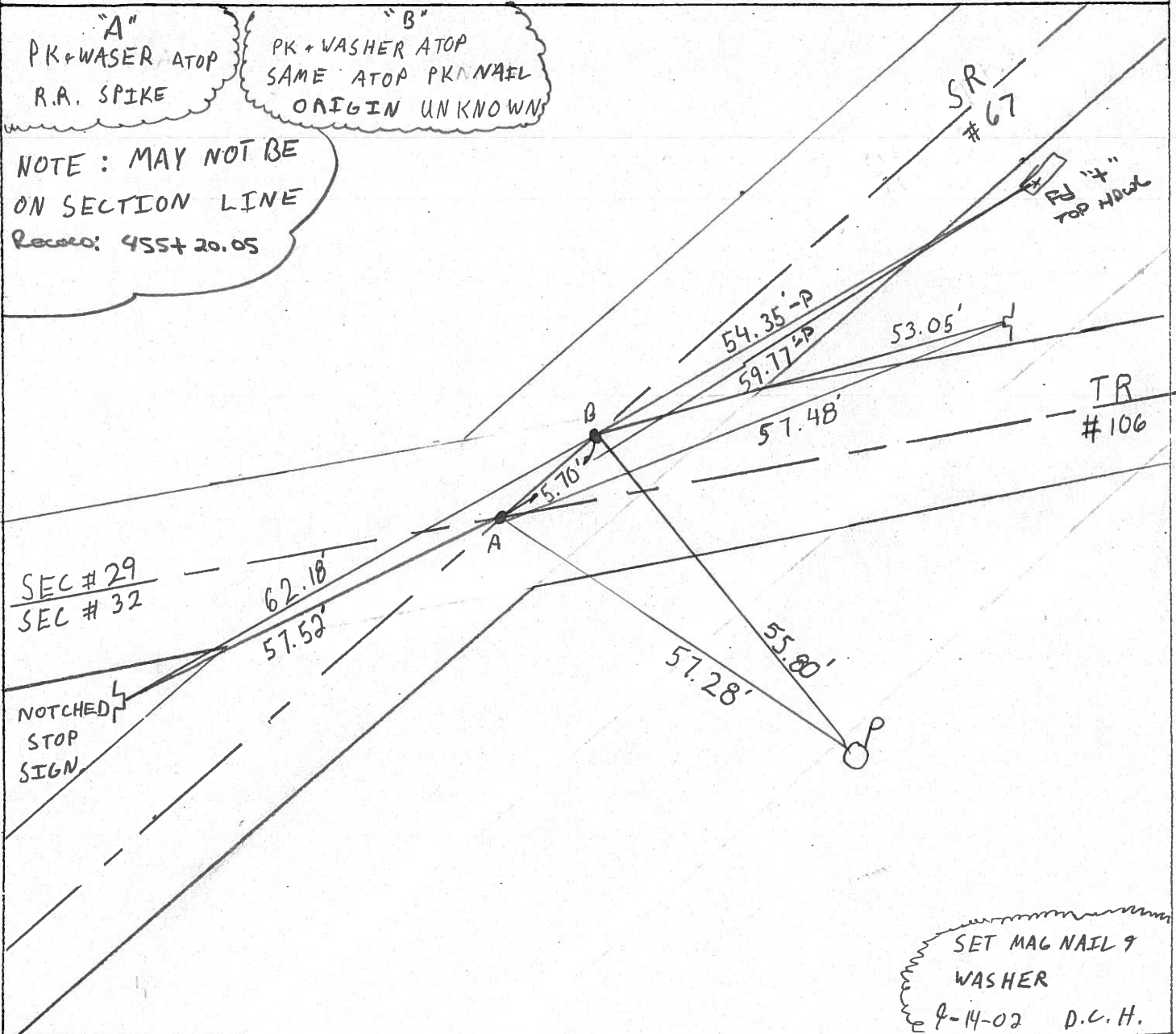
TYPE MONUMENT PK + WASHER  
 ON SURFACE - BELOW \_\_\_\_\_  
 LEFT - ☉ PAV'T. - RIGHT .5' LEFT  
 TO \_\_\_\_\_ EDGE PAVEMENT  
 S.L.M. 455+88 455+94



"A"  
 PK+WASHER ATOP  
 R.A. SPIKE

"B"  
 PK+WASHER ATOP  
 SAME ATOP PK+NAIL  
 ORIGIN UNKNOWN

NOTE: MAY NOT BE  
 ON SECTION LINE  
 Record: 455+20.05



SET MAG NAIL +  
 WASHER  
 6-14-02 D.C.H.

# O.D.O.T. DISTRICT 2 SURVEY OFFICE

PERSONNEL

REFERENCE NO. 21

SHEET 3 OF 9

NOTES CHENEY

H.C. BARBOUR

R.C. RIPPLE

GEYMAN

DATE 12-10-1991

WEATHER CLOUDY

TEMP. 35°

ROUTE 67

COUNTY SENECA

TOWNSHIP SCIPIO

SECTION 29 & 32

T.R.N.R. 15 E

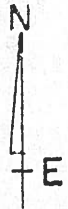
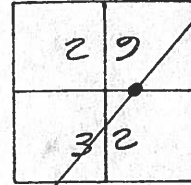
TYPE MONUMENT SET PK/WASHER

ON SURFACE - BELOW \_\_\_\_\_

~~LEFT~~ - & PAV'T. - ~~RIGHT~~ BOTH

— TO — EDGE PAVEMENT

S.L.M. \_\_\_\_\_



RECORD STA. 455+20.05

PREVIOUS MONUMENTS:

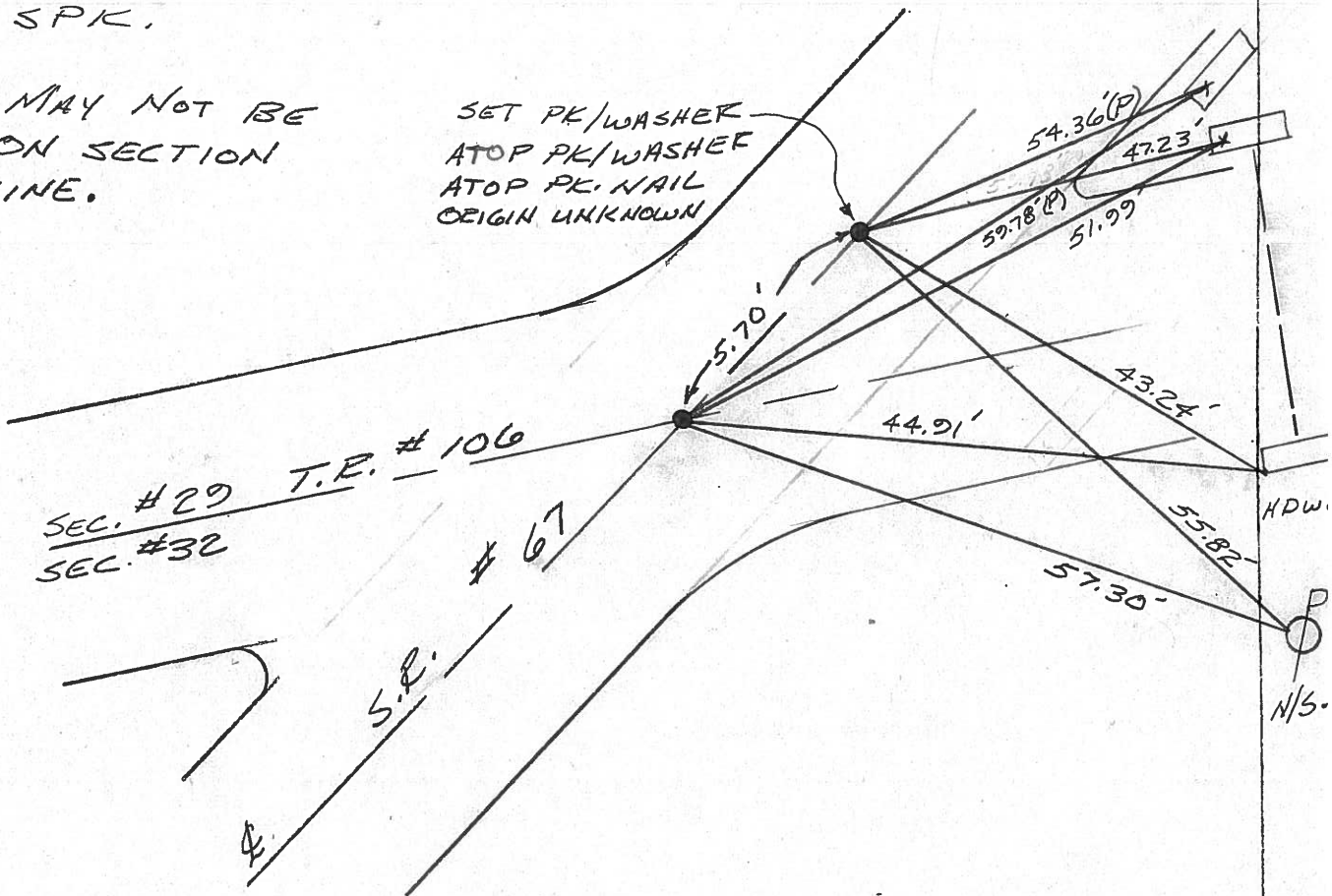
P.K./WASHER

P.R. SPK.

\* NOTE: MAY NOT BE ON SECTION LINE.

SET PK/WASHER ATOP PK/WASHER ATOP PK NAIL ORIGIN UNKNOWN

4" CUTS IN HDWLS.



SEC. #29 T.R. # 106  
SEC. #32

S.P. # 67

County Seneca S.R. #67

Date 6/08/82

Township Scipio

Weather Sunny

Section 32

Temp. 80°

T2N, R15E

Personnel Cronin

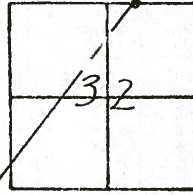
Ripple

Geyman

Hasser

Barbour

(21)



SET PK WASH 12-10-1991  
CONDY 350

CA-10  
B-14C  
R-10  
G-17

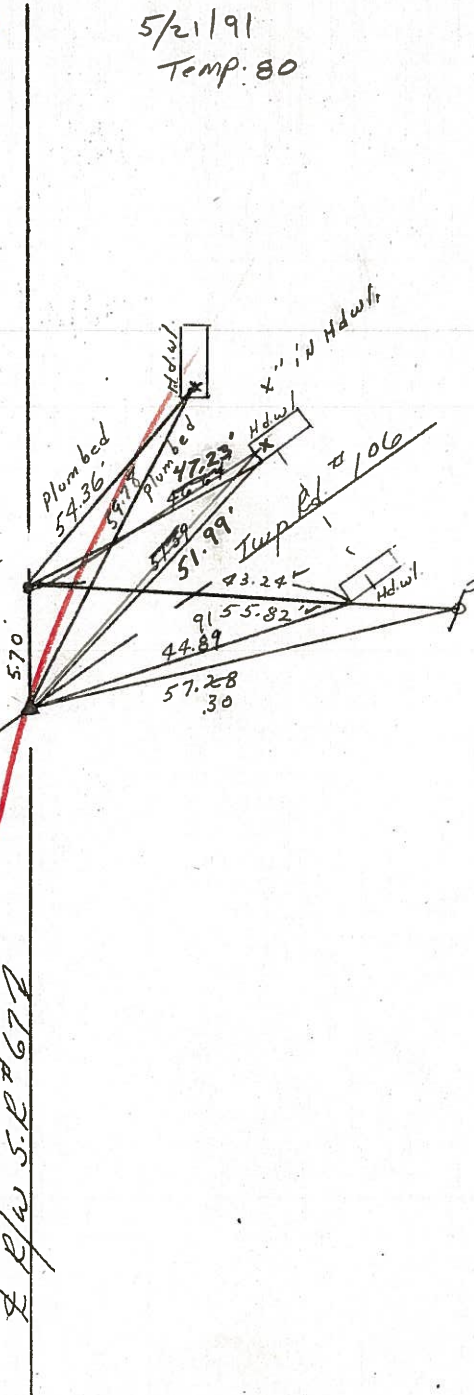
ON E

5/21/91  
Temp. 80



*Handwritten notes in red ink:*  
D  
R  
E

Reset P.K. & Washer  
at top P.K.  
Origin unknown



455 + 20.05

Reset P.K. & Washer

top R.R. spike

lay or may not be on

Section line

Sec. 29  
T1E 106 Sec. 32

R/W S.R. #67

County Seneca S.R. #67

Date 6/08/82

Township Scipio

Weather Sunny

Section 32

Temp. 80°

T<sub>2</sub>N, R<sub>15</sub>E

Personnel Cronin

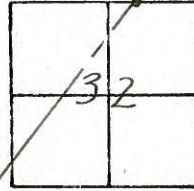
Ripple

Geyman

Mosser

Barbour

#21



Reset P.K. & Washer  
atop P.K.  
Origin unknown

455 + 20.05

Reset P.K. & Washer

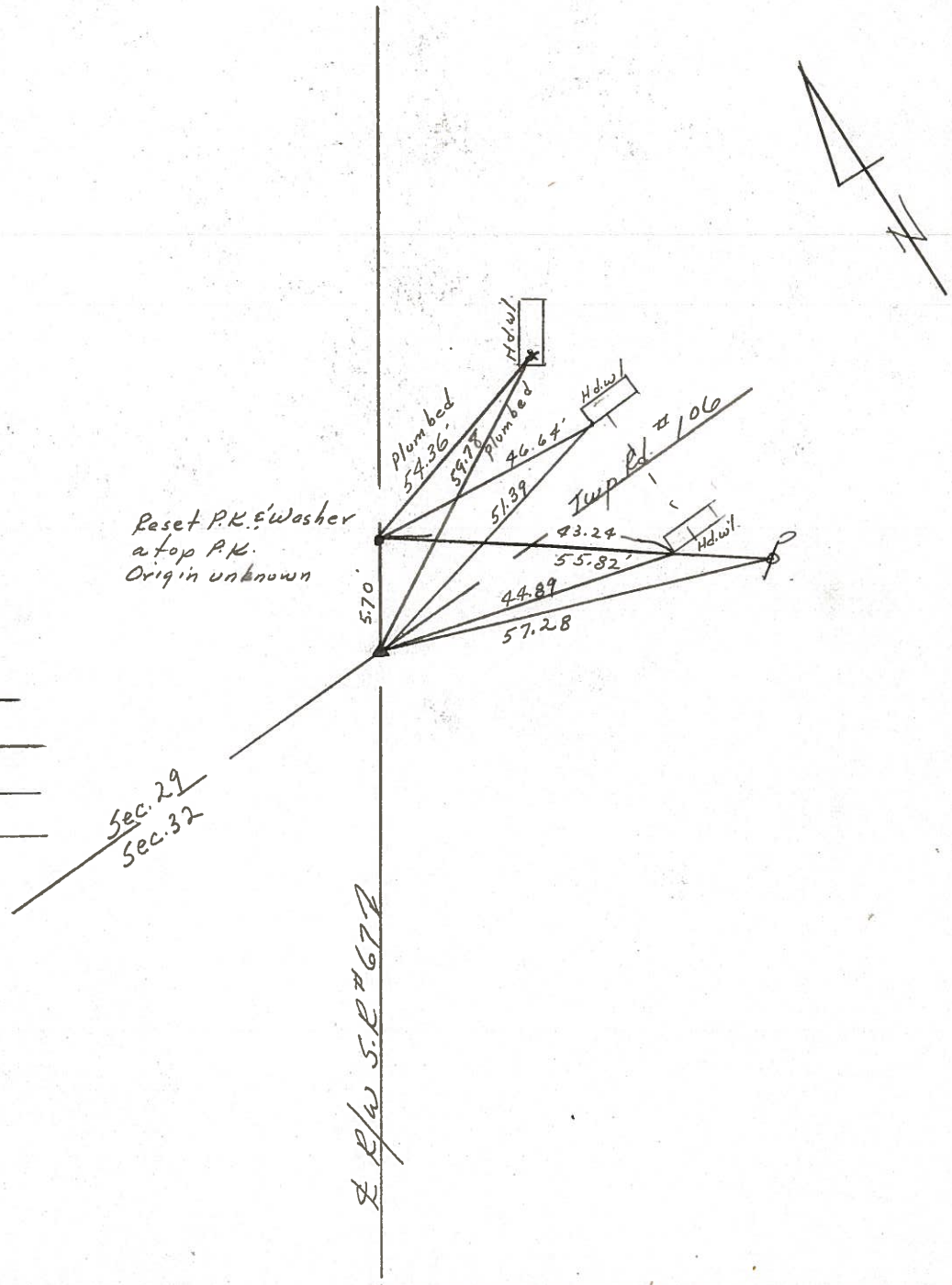
atop R.R. spike

May or may not be on

Section line

Sec. 29  
Sec. 32

R.R./w S.R. #67



County Seneca S.R. # 67

Date 7-16-79

Township Scipio

Weather Sunny

Section 32

Temp. 80°

T2N, R16E

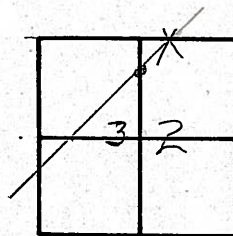
Personnel Schneider

Mosser

Barbour

\_\_\_\_\_

\_\_\_\_\_



21

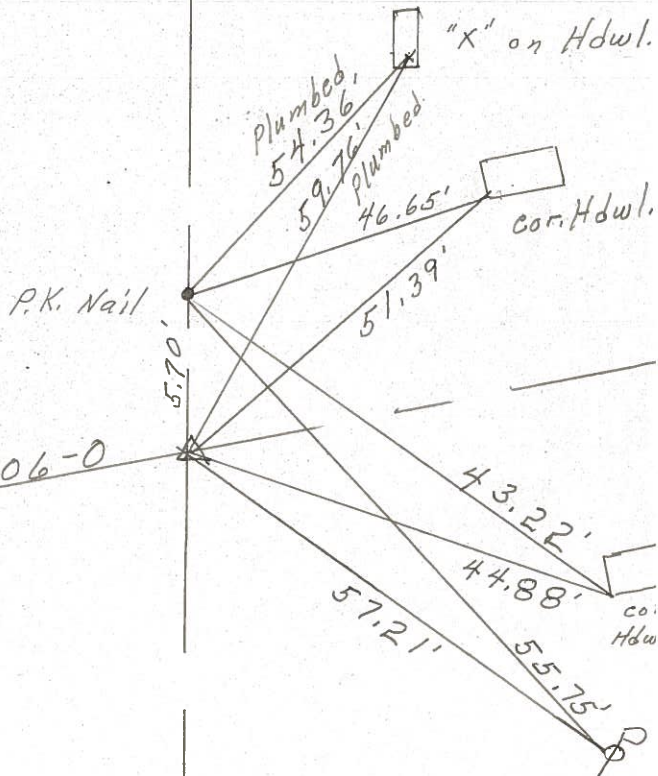


§ S.R. # 67

455 + 20.05

R. R. spk. on § R/W

Twp. Rd. # 106-0



PERSONNEL TITLE PERSONNEL TITLE

COUNTY Seneca DATE 12-21-65

S. R. # 67 WEATHER

SEC. TEMP.

DESCRIPTION LEFT CENTER LINE RIGHT JOB NO.

2/13/69

FOUND IRON PIN  
5" below surface

**23** STA. 487+53.55  
Small R.R. SPIKE on E of R/W  
1" below surface

8426

~~288~~

FOUND 2/13/69

**22** STA. 477+66.25  
R.R. SPIKE on E R/W  
3" below surface

8425

~~287~~

2/13/69

Found old R.R. Nail 6" below  
surface set R.R. spk.

**21** STA. 455+20.05  
RR SPIKE on E of R/W

~~286~~

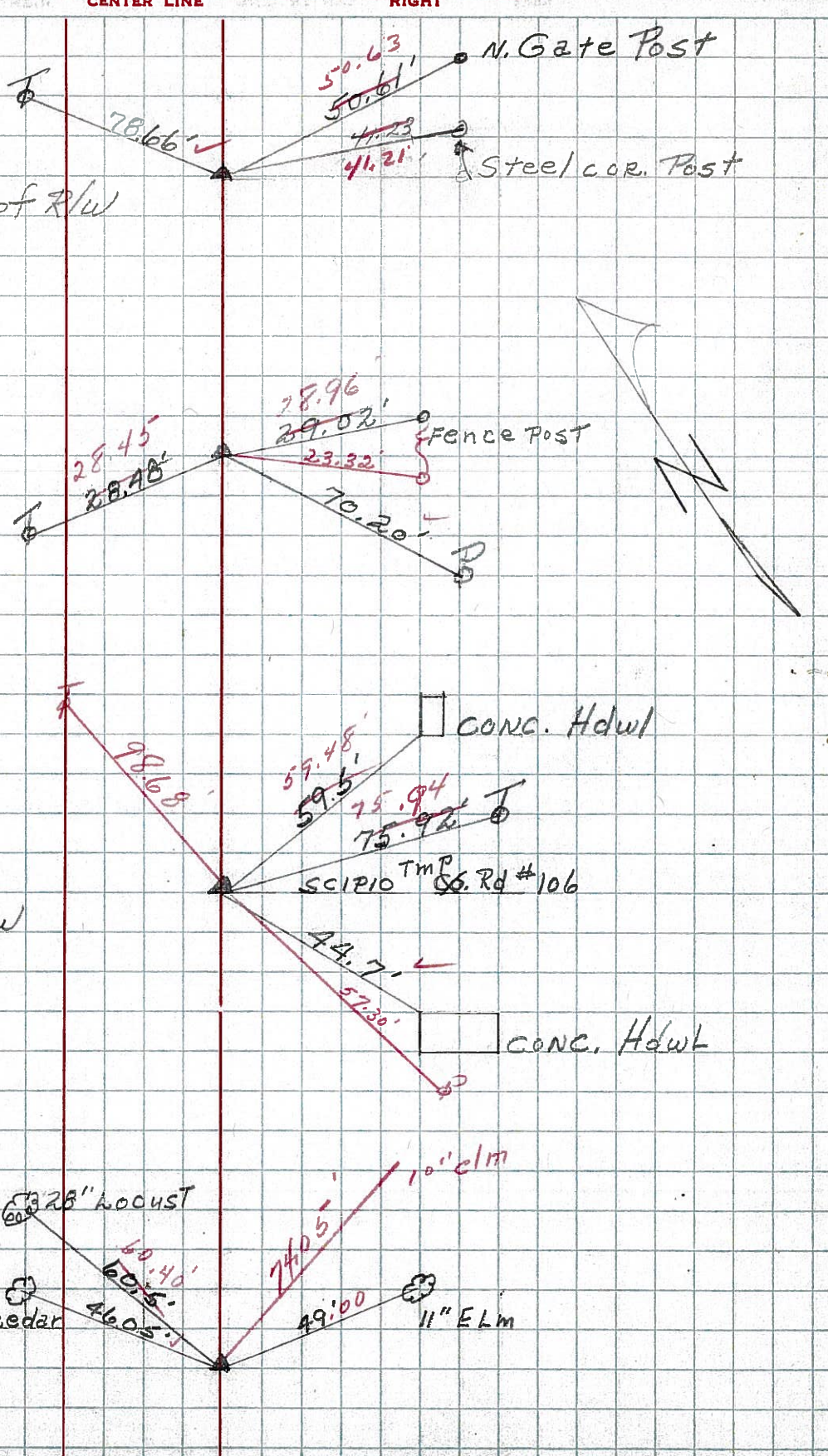
8424

**20-B** FOUND R/W SPK.  
5" below surface

STA. 410+54.7  
IRON PIN on E of R/W

~~285~~

8423



PERSONNEL TITLE PERSONNEL TITLE

COUNTY Seneca

DATE

S. R. 67

WEATHER

SEC.

TEMP.

DESCRIPTION

LEFT

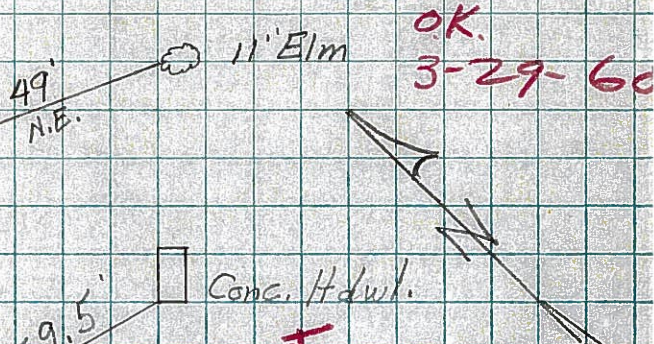
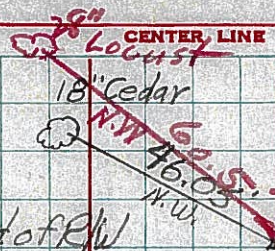
CENTER LINE

RIGHT

JOB NO.

20-B

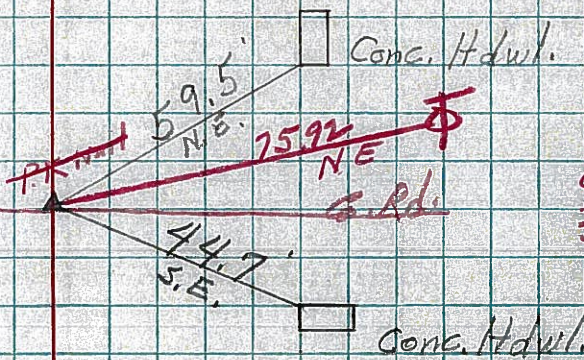
Sta. 410+54.7  
Found Iron pin on  $\frac{1}{2}$  of R/W  
285



OK.  
3-29-60

21

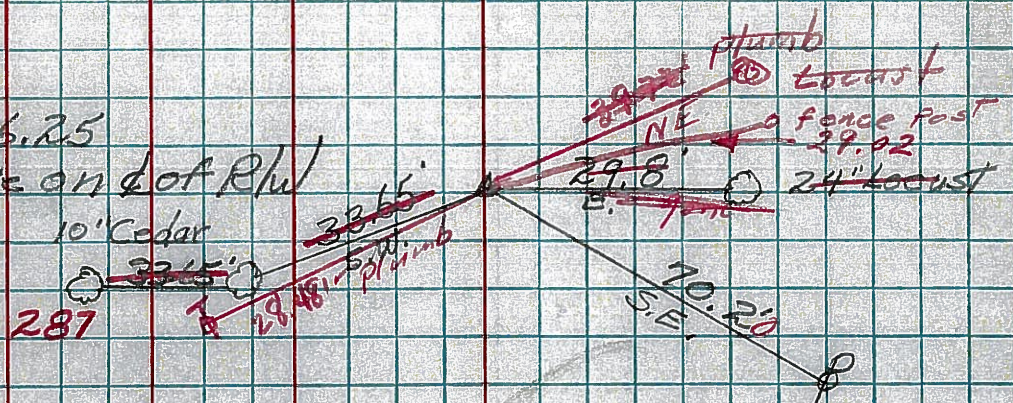
Sta. 455+20.05  
R.R. Spike on  $\frac{1}{2}$  of R/W  
286



OK  
3-29-60

22

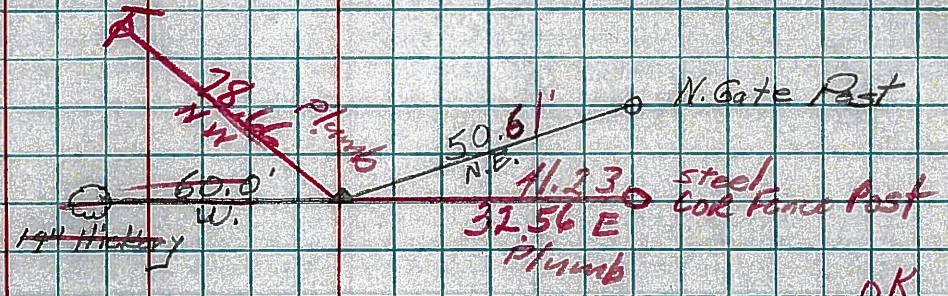
Sta. 477+66.25  
R.R. Spike on  $\frac{1}{2}$  of R/W  
3"  
10' Cedar  
287



OK  
3-29-60

23

Sta. 487+53.55  
Small R.R. Spike on  $\frac{1}{2}$  of R/W  
1" of R/W  
288



OK  
3-29-60