

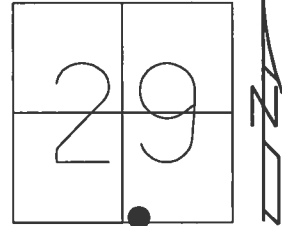
O.D.O.T. DISTRICT 2 SURVEY OFFICE (USE ONLY)

PERSONNEL _____ REFERENCE NO. 21 A SHEET 18 OF 25

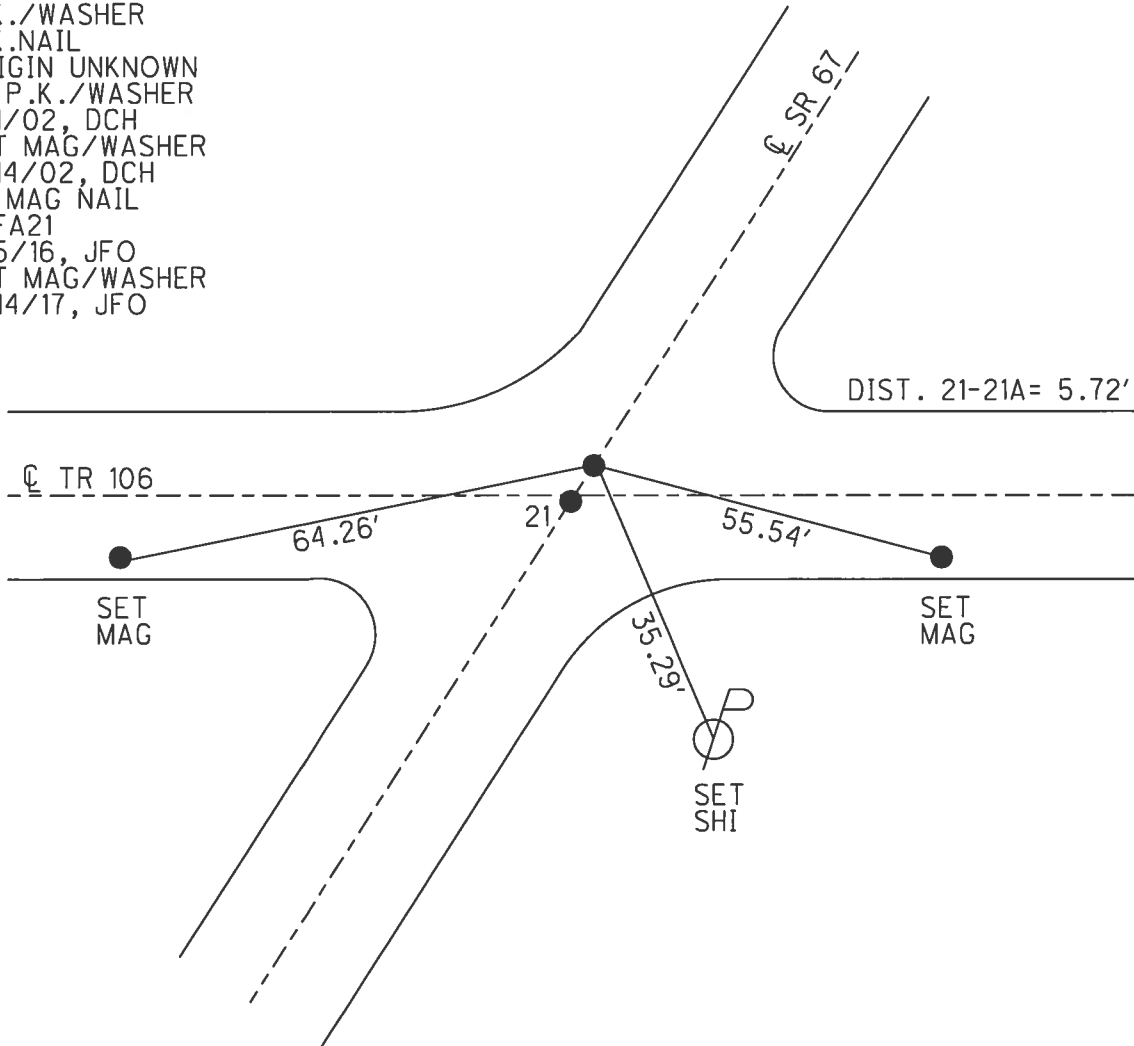
NOTES RHOADES DATE 7/13/17 ROUTE SR 67
 H.C. O'DONNELL WEATHER CLOUDY COUNTY SENECA
 R.C. RHOADES TEMP. 76° TOWNSHIP SCIPIO
 _____ SECTION 29
 _____ T 2 N R 16 E

TYPE MONUMENT MAG NAIL
 ON SURFACE - ~~BELOW~~ ON _____
 LEFT - ☉ PAV'T - ~~RIGHT~~ 0.5'
 _____ TO _____ EDGE PAVEMENT
 S.L.M. 455+19.13

Grid: Northing: 520964.797 Easting: 1818877.505



RECORD:
 P.K./WASHER ATOP
 P.K./WASHER
 P.K.NAIL
 ORIGIN UNKNOWN
 FD P.K./WASHER
 6/1/02, DCH
 SET MAG/WASHER
 9/14/02, DCH
 FD MAG NAIL
 REFA21
 2/5/16, JFO
 SET MAG/WASHER
 11/14/17, JFO



O.D.O.T. DISTRICT 2 SURVEY OFFICE

PERSONNEL

REFERENCE NO. 21

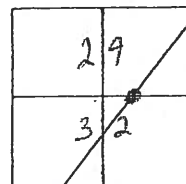
SHEET 13 OF 18

NOTES HOMAN
 H.C. MOSSER
 R.C. BARNHISEL
CANTERBURY
ROUSOS

DATE 6/1/02
 WEATHER SUNNY
 TEMP. 75°

ROUTE 67
 COUNTY SENECA
 TOWNSHIP SCIPPIO
 SECTION 29 + 32
T 2 N R 15 E

TYPE MONUMENT PK + WASHER
 ON SURFACE - BELOW _____
 LEFT - & PAW'T. - RIGHT .5' LEFT
 TO _____ EDGE PAVEMENT
 S.L.M. 455+88 455+94

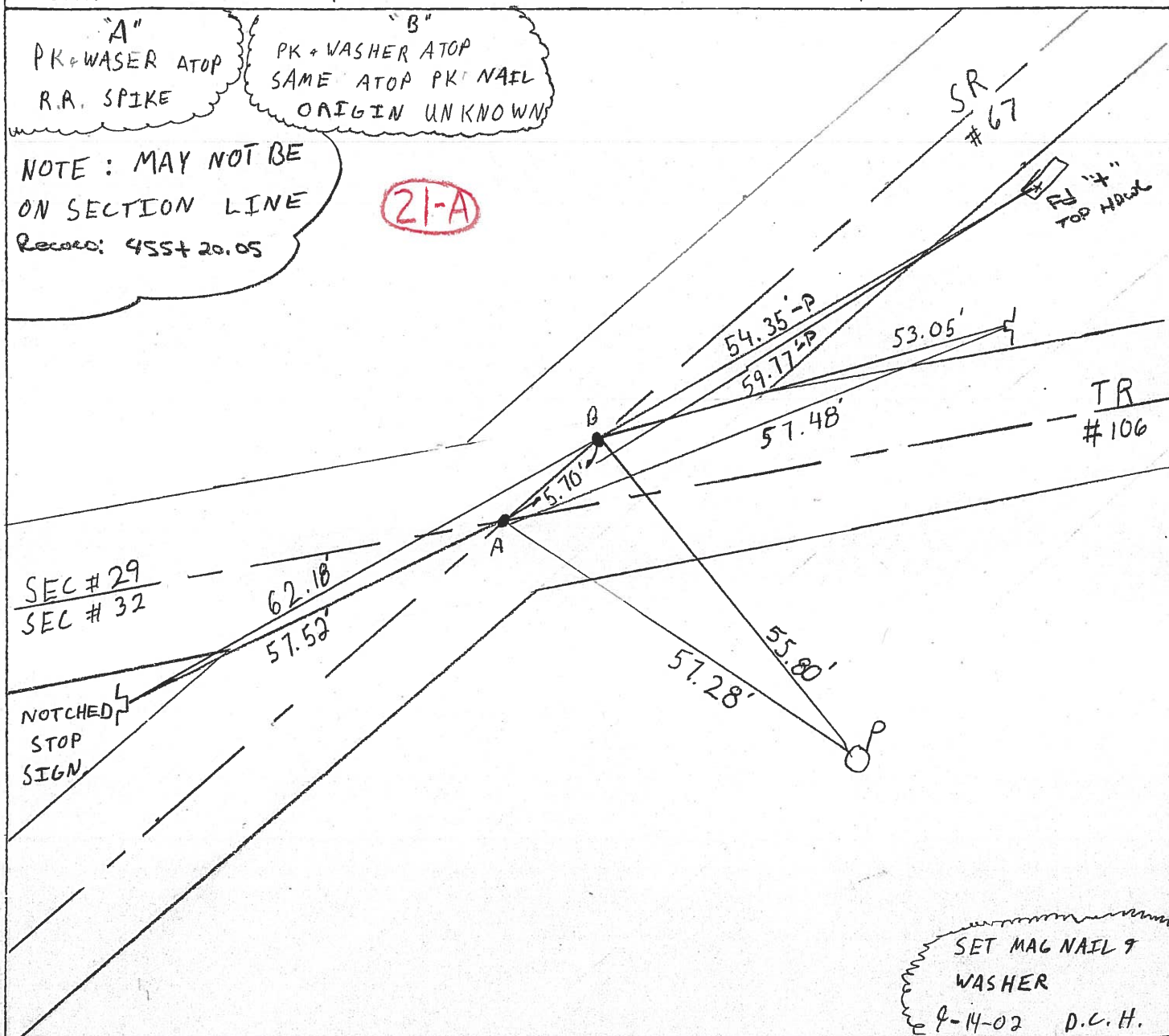


"A"
 PK + WASHER ATOP
 R.A. SPIKE

"B"
 PK + WASHER ATOP
 SAME ATOP PK NAIL
 ORIGIN UNKNOWN

NOTE: MAY NOT BE
 ON SECTION LINE
 Record: 455+20.05

21-A



SET MAG NAIL +
 WASHER
 6-14-02 D.C.H.

O.D.O.T. DISTRICT 2 SURVEY OFFICE

PERSONNEL

REFERENCE NO. 21

SHEET 3 OF 9

NOTES CHENEY

H.C. BARBOUR

R.C. RIPPLE

GEYMAN

DATE 12-10-1991

WEATHER CLOUDY

TEMP. 35°

ROUTE 67

COUNTY SENECA

TOWNSHIP SCIPIO

SECTION 29 & 32

T. N R. E

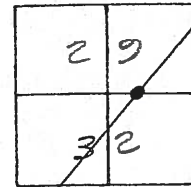
TYPE MONUMENT SET PK/WASHER

ON SURFACE - BELOW _____

~~LEFT~~ - & PAV'T. - ~~RIGHT~~ BOTH

— TO — EDGE PAVEMENT

S.L.M. _____



RECORD STA. 455+20.05

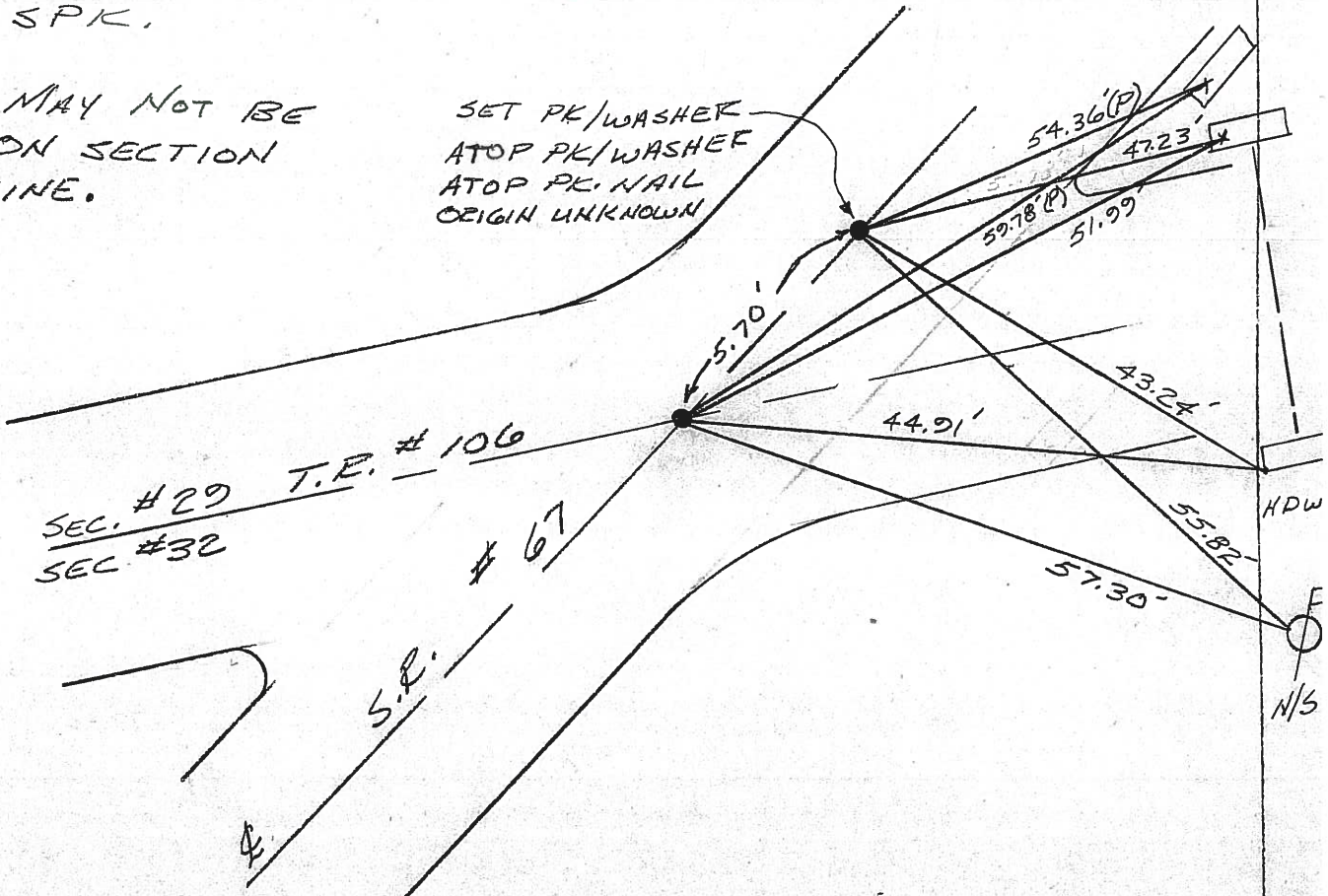
PREVIOUS MONUMENTS:
 P.K./WASHER
 P.R. SPK.

21-A

* NOTE: MAY NOT BE ON SECTION LINE.

SET PK/WASHER ATOP PK/WASHER ATOP PK NAIL ORIGIN UNKNOWN

+ CUTS IN HDWLS.



SEC. #29 T.E. #106
 SEC. #32

S.P. #67

County Seneca S.R. #67

Date 6/08/82

Township Scipio

Weather Sunny

Section 32

Temp. 80°

T₂N, R₁₅E

Personnel Cronin

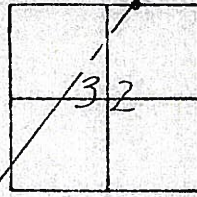
Ripple

Geymen

Mosser

Barbour

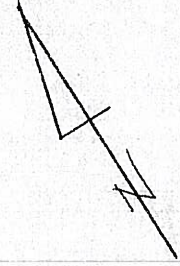
21-A



SET PK/WASH 12-10-1991
CONDY 356

5/21/91
Temp. 80

CH-W
B-14C
R-EC
G-F
ON E



21-A

Reset P.K. & Washer
at top P.K.
Origin unknown

455 + 20.05

Reset P.K. & Washer

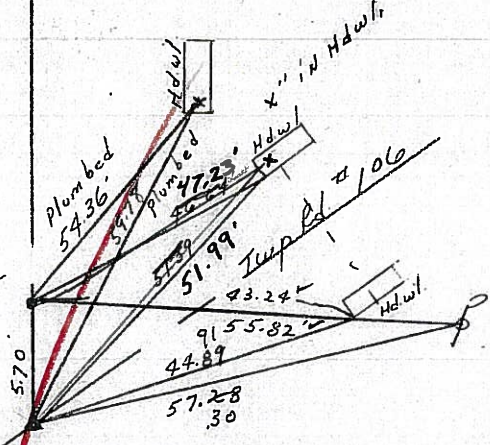
top R.R. spike

May or may not be on

Section line

Sec. 29
R.R. 106 Sec. 32

R.R. 106 S.R. #67



County Seneca S.R. #67

Date 6/08/82

Township Scipio

Weather Sunny

Section 32

Temp. 80°

T₂N, R₁₅E

Personnel Cronin

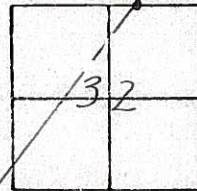
Ripple

Geyman

Mosser

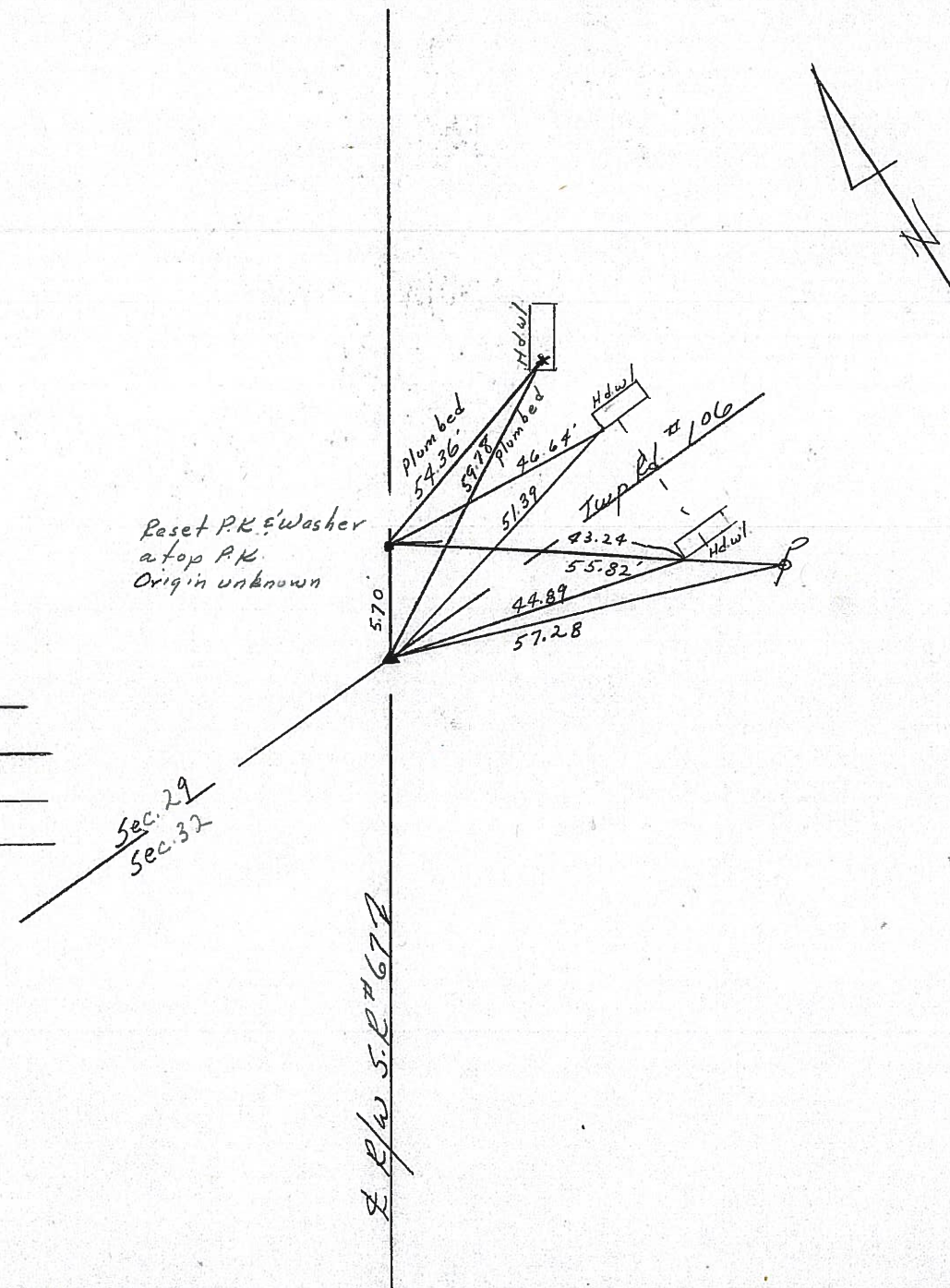
Barbour

#21-A



455 + 20.05
Reset P.K. & Washer
atop R.R. spike
May or may not be on
Section line

Reset P.K. & Washer
atop P.K.
Origin unknown



County Seneca S.R. # 67

Date 7-16-79

Township Scipio

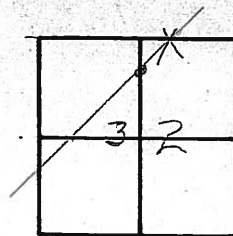
Weather Sunny

Section 32

Temp. 80°

T2N; R16E

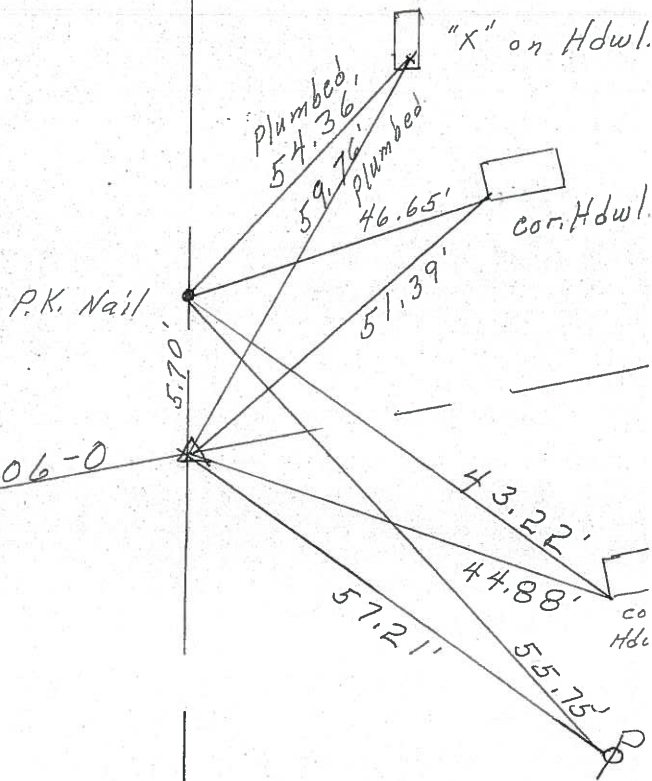
Personnel Schneider
Mosser
Barbour



21-A



S.R. # 67



455 + 20.05

R. R. spk. on & R/W

Twp. Rd. # 106-0