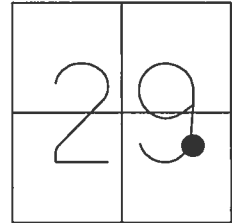


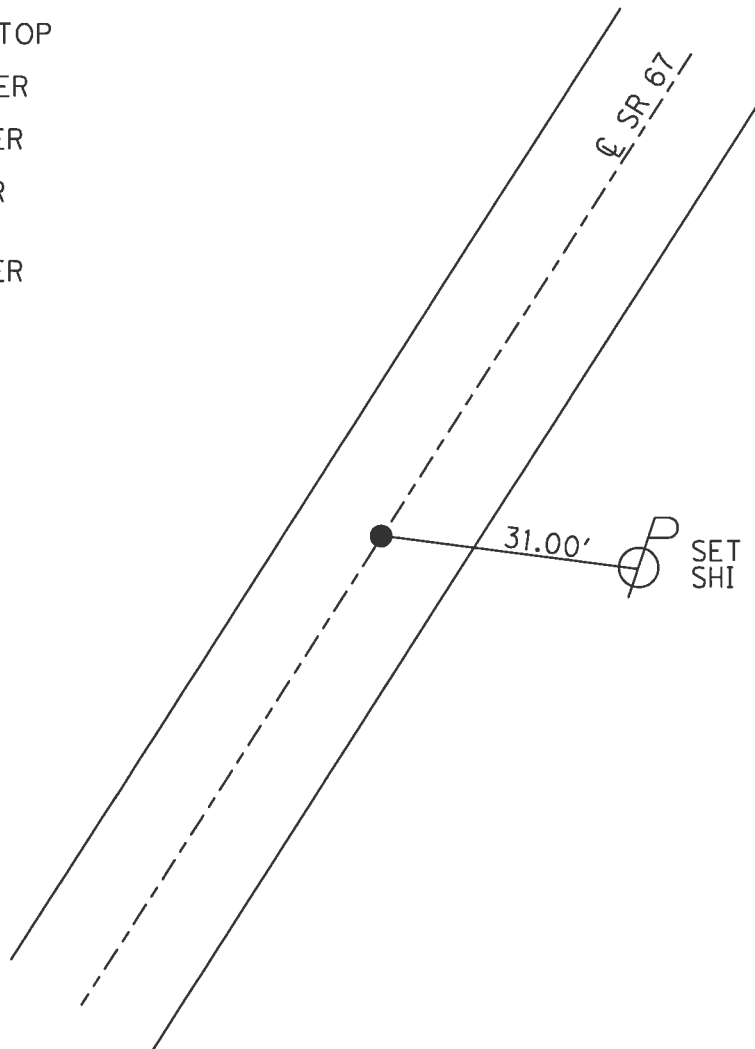
O.D.O.T. DISTRICT 2 SURVEY OFFICE (USE ONLY)

PERSONNEL \_\_\_\_\_ REFERENCE NO. 22 SHEET 19 OF 25  
 NOTES RHOADES DATE 7/13/17 ROUTE SR 67  
 H.C. O'DONNELL WEATHER CLOUDY COUNTY SENECA  
 R.C. RHOADES TEMP. 76° TOWNSHIP SCIPIO  
 \_\_\_\_\_ SECTION 29  
 \_\_\_\_\_ T 2 N R 16 E

TYPE MONUMENT MAG/WASHER  
 ON SURFACE - ~~BELOW~~ ON  
 LEFT - ☉ PAV'T - ~~RIGHT~~ 0.5'  
9.4' TO RT EDGE PAVEMENT  
 S.L.M. 477+54.95  
 Grid: Northing: 522807.324 Easting: 1820144.030



RECORD:  
 477+66.25  
 P.K./WASHER ATOP  
 R.R.SPIKE  
 SET P.K./WASHER  
 6/1/02, DCH  
 SET MAG/WASHER  
 9/14/02, DCH  
 FD MAG/WASHER  
 REF22  
 2/5/16, JFO  
 SET MAG/WASHER  
 11/14/17, JFO



O.D.O.T. DISTRICT 2 SURVEY OFFICE

PERSONNEL

REFERENCE NO. 22

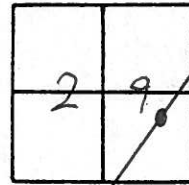
SHEET 14 OF 18

NOTES HOMAN  
H.C. MOSSER  
R.C. CANTERBURY  
ROUROSOC  
BARNHISEL

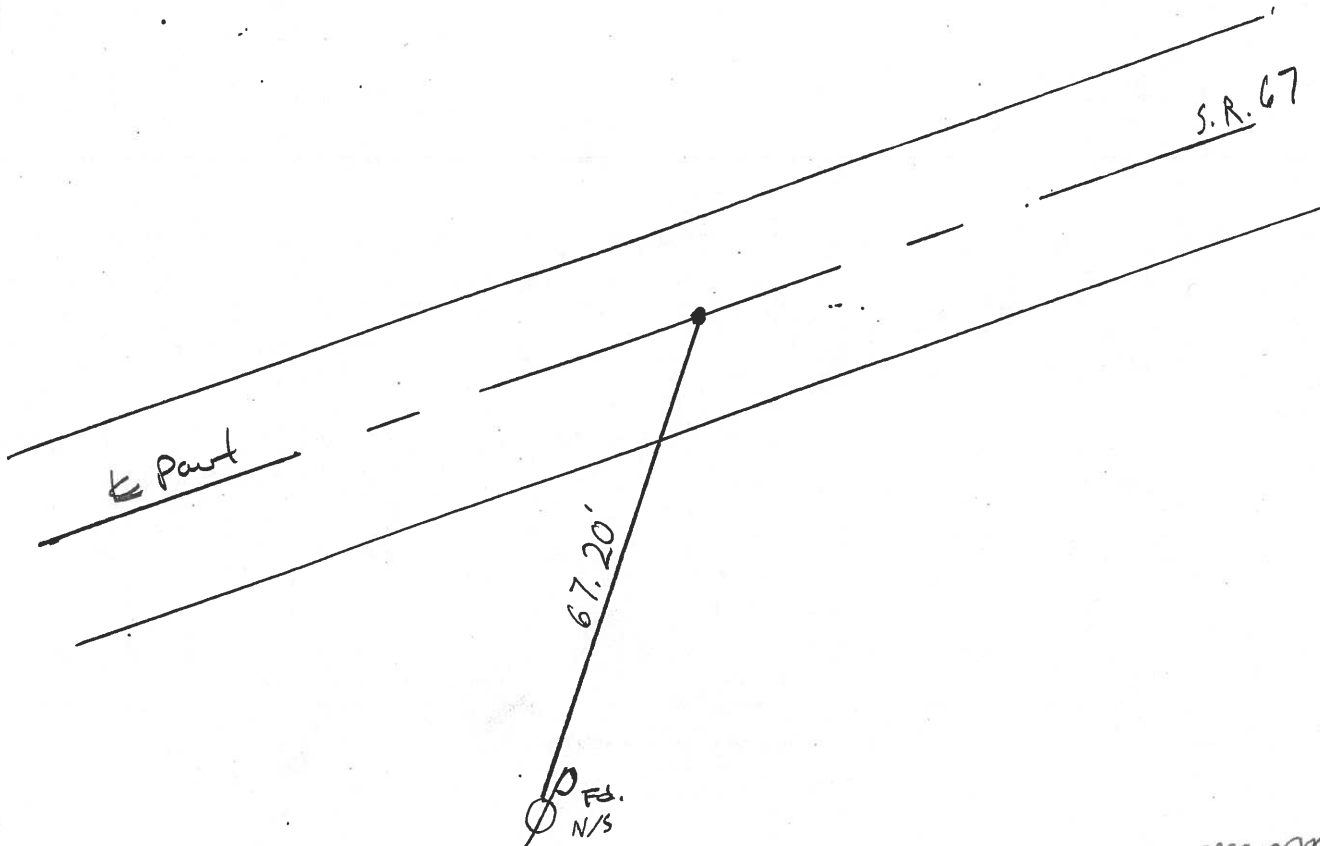
DATE 6-1-02  
WEATHER SUNNY  
TEMP. 75°

ROUTE 67  
COUNTY SENECA  
TOWNSHIP SCIPIO  
SECTION 29  
T 2 N R 15 E

TYPE MONUMENT SET PK + WASHER  
ON SURFACE - BELOW  
LEFT - € PAV'T. - RIGHT .5'  
9.4' TO RT. EDGE PAVEMENT  
S.L.M. 478+20



Recess: 477+66.25  
PK + WASHER ATOP  
R.R. SPIKE



SET MAG NAIL  
& WASHER  
9-14-02 D.C. H.

O.D.O.T. DISTRICT 2 SURVEY OFFICE

PERSONNEL

REFERENCE NO. 22

SHEET 4 OF 9

NOTES CHENEY

H.C. BARBOUR

DATE 12-10-1991

ROUTE 67

R.C. RIPPLE

WEATHER CLOUDY

COUNTY SENECA

GEYMAN

TEMP. 35°

TOWNSHIP SCIPIO

SECTION 29

T2 N R15 E

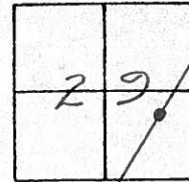
TYPE MONUMENT SET PK/WASHER

ON SURFACE - BELOW

LEFT- & PAV'T. - RIGHT 0.5'

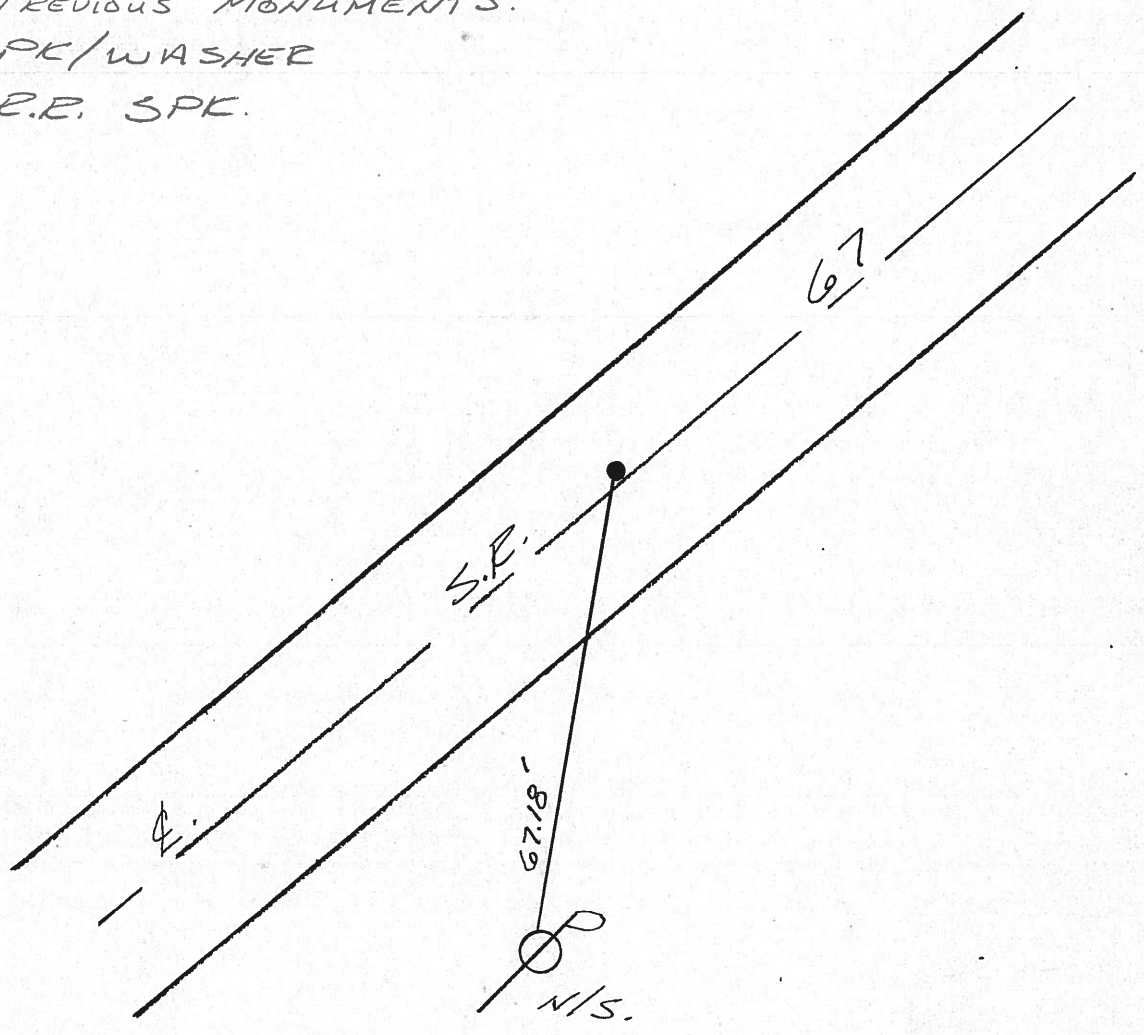
10' TO RT. EDGE PAVEMENT

S.L.M. \_\_\_\_\_



RECORD STA. 477+66.25

PREVIOUS MONUMENTS:  
PK/WASHER  
R.E. SPK.



County Seneca S.R. 67

Date 6/08/82

Township Scipio

Weather Sunny

Section 29

Temp. 80°

T2N, R15E

Personnel Cronin

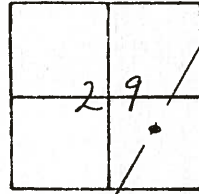
Ripple

Geyman

Mosser

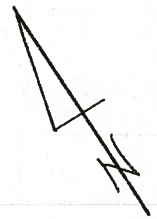
Barbour

22



12-10-91  
SET PK/WASH CLOUDY 35°  
CH. ✓  
B-HC  
E-CC  
G-F  
0.5' LT. ✓  
10' RT. EIP.

5/21/91  
Temp. 80°

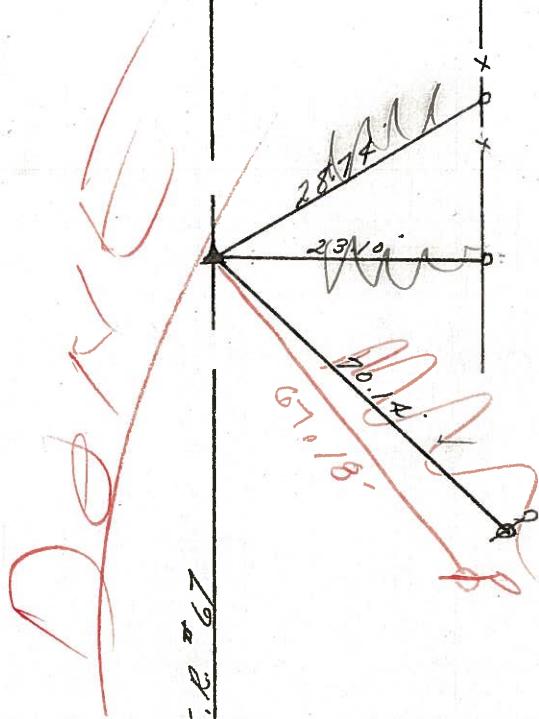


477+66.25

Reset P.K. & Washer

Top R.R. spike

66.25  
53.55  
-----  
12.70



S.R. 67 S.R. 67

County Seneca S.R. 67

Township Scipio

Section 29

T2N, R15E

Personnel Cronin

Ripple

Geyman

Mosser

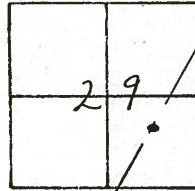
Barbour

#22

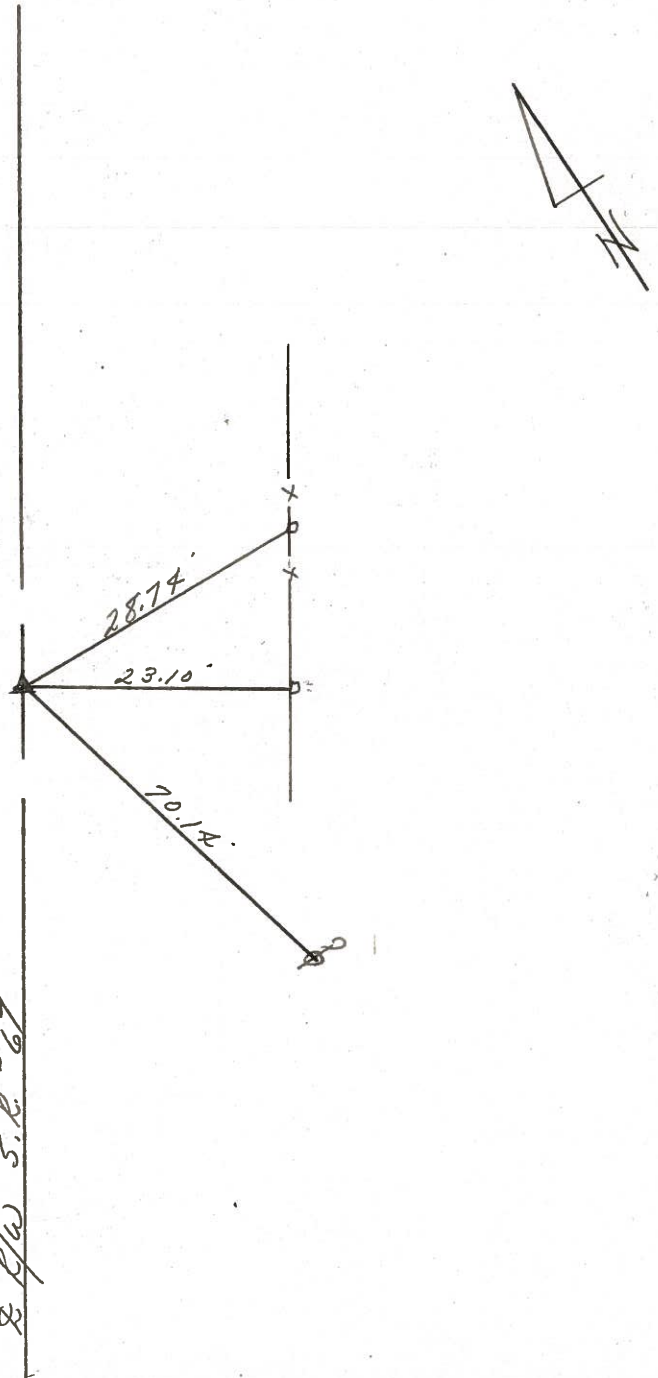
Date 6/08/82

Weather Sunny

Temp. 80°



477+66.25  
Reset P.K. & Washer  
atop R.R. spike



S.R. 67

County Seneca S.R. #67

Date 7-16-79

Township Scipio

Weather Sunny

Section 29

Temp. 82°

T2N, R16E

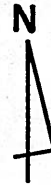
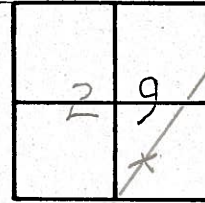
Personnel Schneider

Mosser

Barbour

\_\_\_\_\_

\_\_\_\_\_



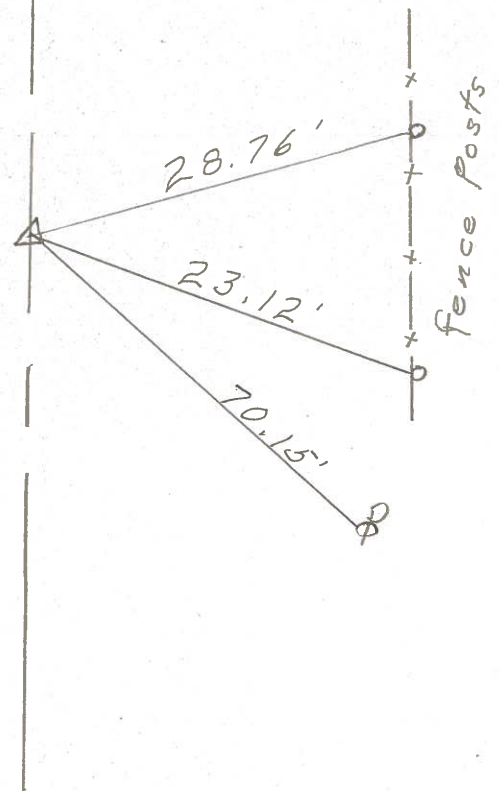
22



⊥ S.R. # 67

477 + 66.25

R.R. spk. on ⊥ R/W



PERSONNEL TITLE PERSONNEL TITLE

COUNTY Seneca DATE 12-21-65

S. R. #67 WEATHER

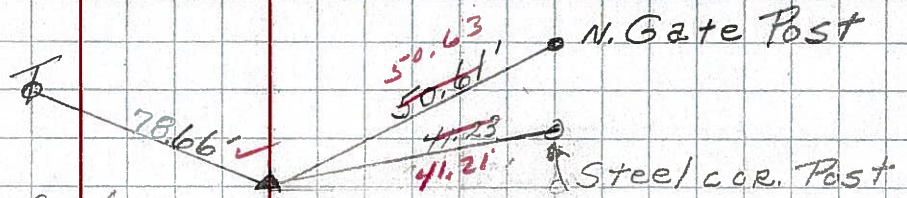
SEC. TEMP.

DESCRIPTION LEFT CENTER LINE RIGHT JOB NO.

2/13/69

FOUND IRON PIN  
5" below surface

23 STA 487+53.55  
Small R.R. SPIKE on E of R/W  
1" below surface

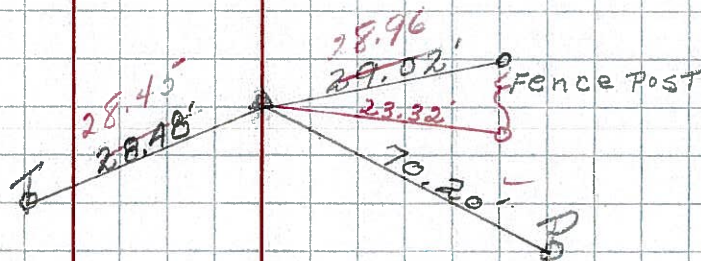


8426

~~288~~

FOUND 2/13/69

22 STA 477+66.25  
R.R SPIKE on E R/W  
3" below surface



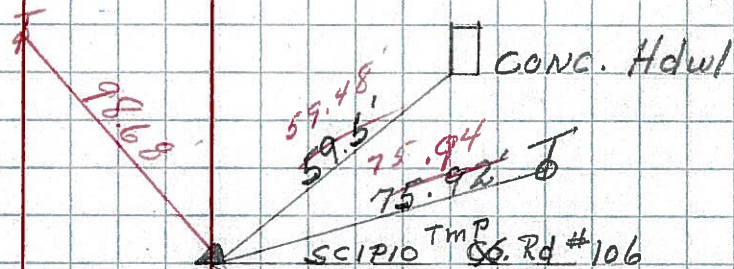
8425

~~289~~

2/13/69

FOUND old P.K. Nail 6' below  
surface set R.R. spike.

21 STA 455+20.05  
R.R SPIKE on E of R/W



~~286~~

8424

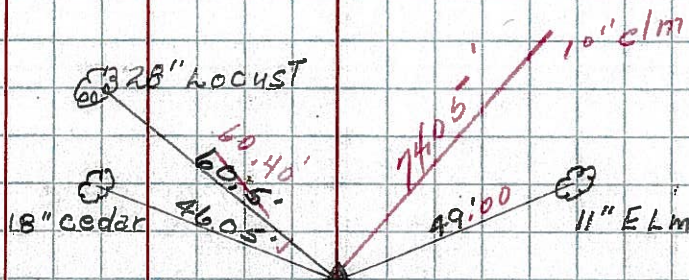
CONC. Hdwt

CONC. Hdwt

20-13

FOUND R/W spike  
5" below surface

STA 410+54.7  
IRON PIN on E of R/W



~~285~~

8422

PERSONNEL TITLE PERSONNEL TITLE

COUNTY Seneca

DATE

S. R. 67

WEATHER

SEC.

TEMP.

DESCRIPTION

LEFT

CENTER LINE

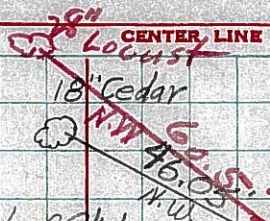
RIGHT

JOB NO.

20-B

Sta. 410+54.7  
Found Iron pin on  $\frac{1}{2}$  of R/W

285



49' N.E.

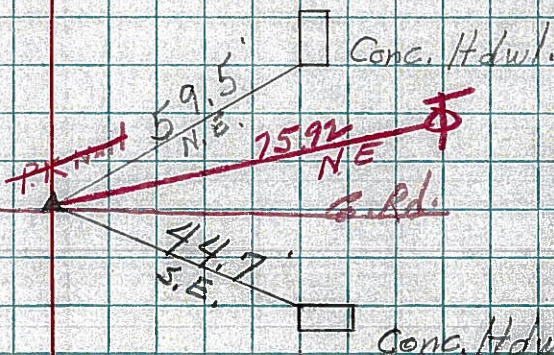
11' Elm

OK.  
3-29-60

21

Sta. 455+20.05  
R.R. Spike on  $\frac{1}{2}$  of R/W

286



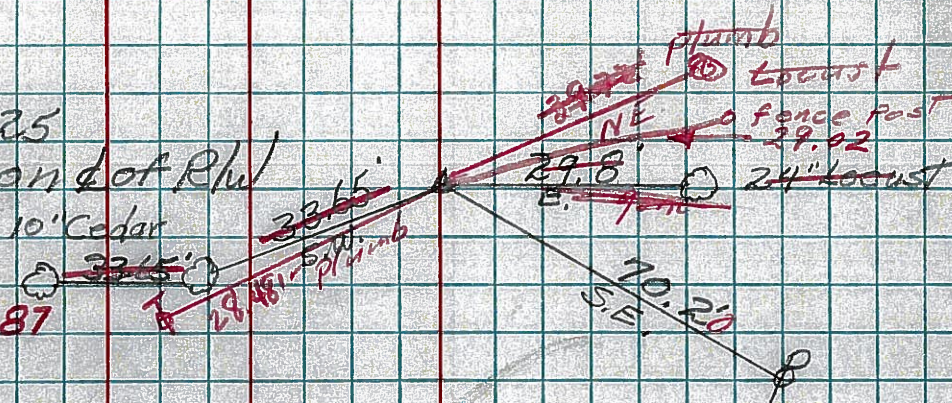
OK  
3-29-60

22

Sta. 477+66.25  
R.R. Spike on  $\frac{1}{2}$  of R/W

3"

287

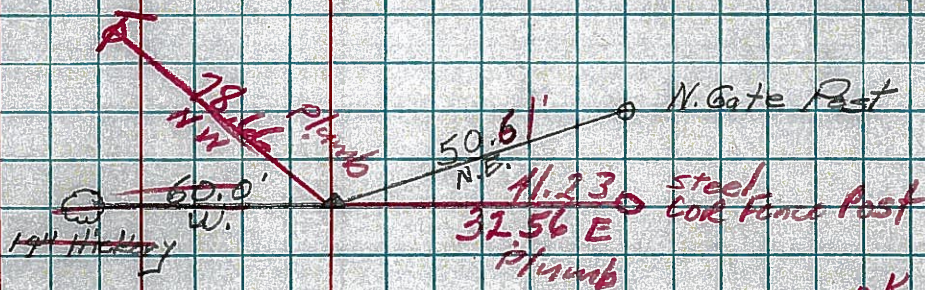


OK  
3-29-60

23

Sta. 487+53.55  
Small R.R. Spike on  $\frac{1}{2}$  of R/W

288



OK  
3-29-60