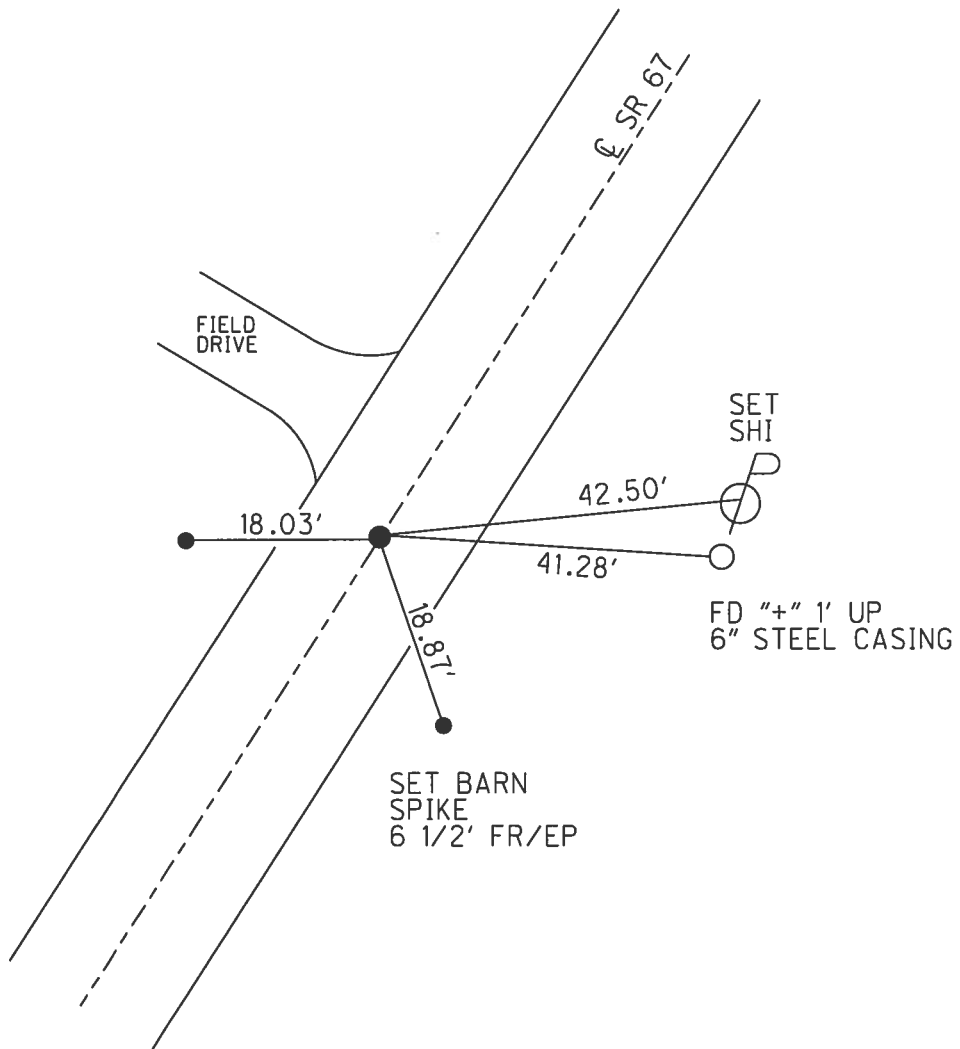
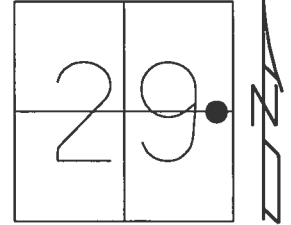


O.D.O.T. DISTRICT 2 SURVEY OFFICE (USE ONLY)

PERSONNEL _____ REFERENCE NO. 23 SHEET 20 OF 25
 NOTES RHOADES DATE 6/13/17 ROUTE SR 67
 H.C. O'DONNELL WEATHER SUNNY COUNTY SENECA
 R.C. POORE TEMP. 91° TOWNSHIP SCIPIO
 _____ SECTION 29
 _____ T 2 N R 16 E

TYPE MONUMENT MAG NAIL
 ON SURFACE - ~~BELOW~~ ON
 LEFT - ☉ PAV'T - RIGHT ON
9.8' TO RT EDGE PAVEMENT
 S.L.M. 487+47.60
 Grid: Northing: 523630.884 Easting: 1820698.197



O.D.O.T. DISTRICT 2 SURVEY OFFICE

PERSONNEL

REFERENCE NO. 23

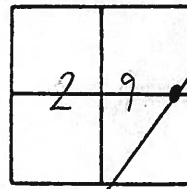
SHEET 15 OF 18

NOTES HOMAN
H.C. MOSSER
R.C. BARNHISEL
CANTERBURY
ROUSOS

DATE 6-1-02
WEATHER SUNNY
TEMP. 75°

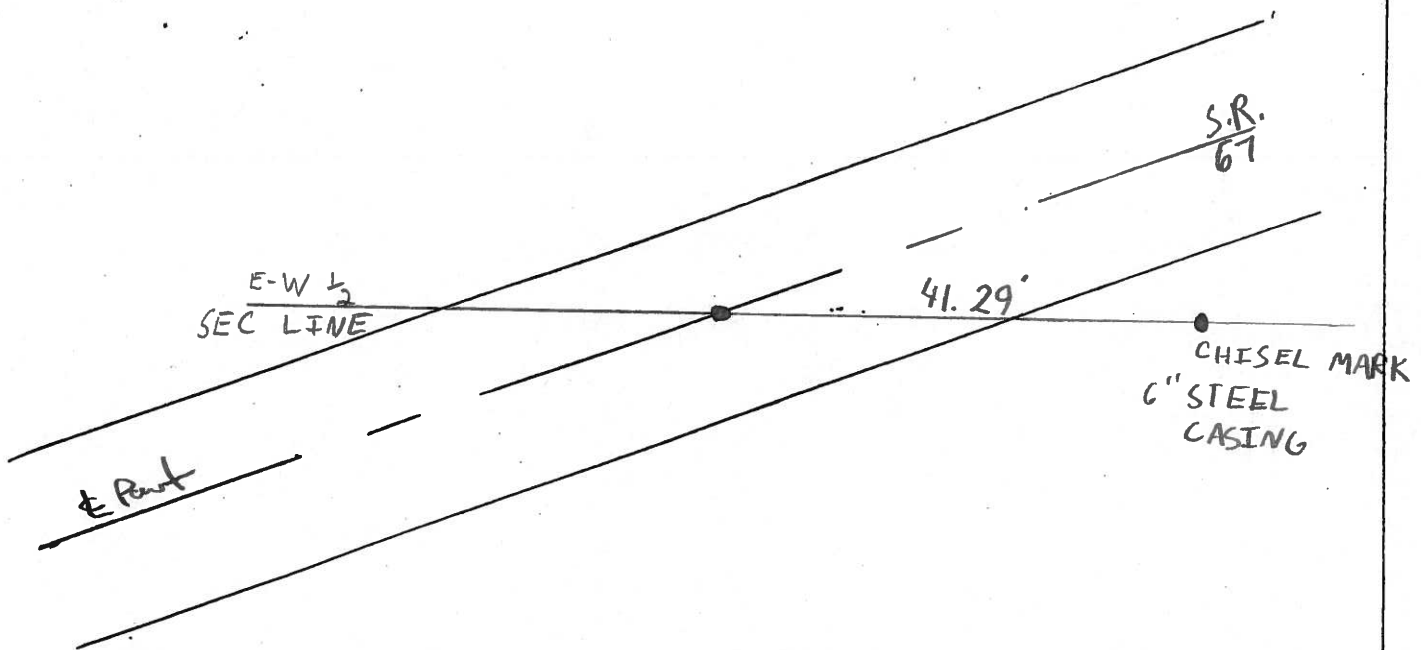
ROUTE 67
COUNTY SENECA
TOWNSHIP SCIPIO
SECTION 29
T 2 N R 15 E

TYPE MONUMENT PK & WASHER
ON SURFACE - BELOW
~~LEFT~~ - C PAV'T. - RIGHT ON 4
9.8' TO RT. EDGE PAVEMENT
S.L.M. 488+20



Records: 487+53.55

PK & WASHER ATOP
R.R. SPIKE



O.D.O.T. DISTRICT 2 SURVEY OFFICE

PERSONNEL

REFERENCE NO. 23

SHEET 5 OF 9

NOTES CHENEY

H.C. BABOUR

DATE 12-10-1991

ROUTE 67

R.C. RIPPLE

WEATHER CLOUDY

COUNTY SENECA

GEYMAN

TEMP. 35°

TOWNSHIP SCIPIO

SECTION 29

T2 N R 15 E

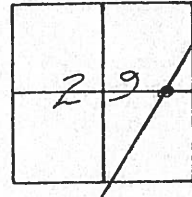
TYPE MONUMENT SET PK/WASHER

ON SURFACE - BEEHIVE

~~LEFT~~ - C PAV'T. - ~~RIGHT~~

9.5 TO RT. EDGE PAVEMENT

S.L.M. _____

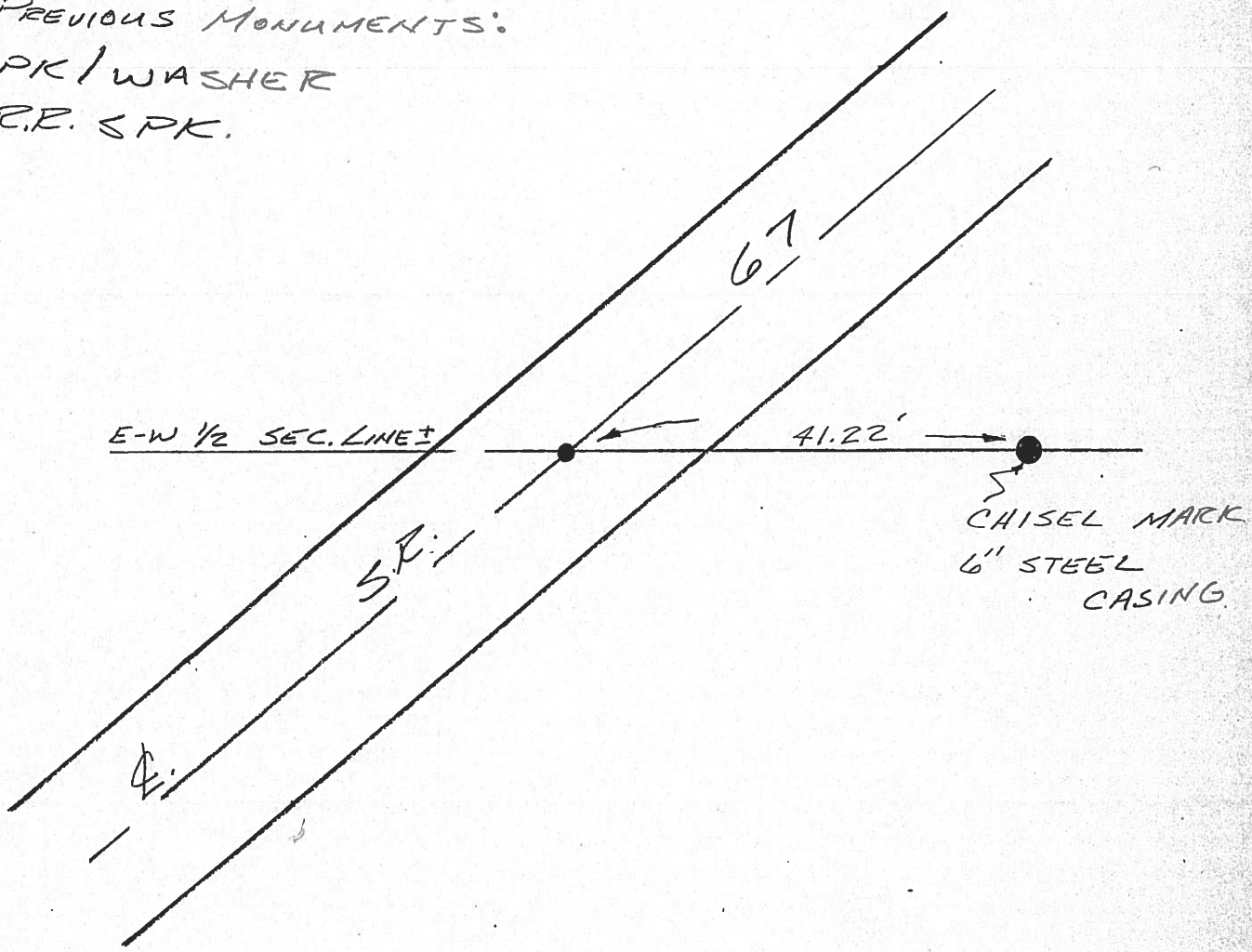


RECORD STA. 487+53.55

PREVIOUS MONUMENTS:

PK/WASHER

R.R. SPK.



County Seneca S.R. #67

Date 6/08/82

Township Scipio

Weather sunny

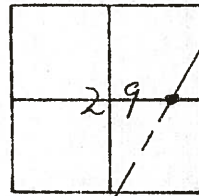
Section 29

Temp. 85°

T₂N, R₁₅E

Personnel Cronin
Ripple
Geyman
Messer
Barbour

23

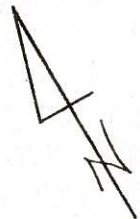


12-10-79
 cloudy 35°

OH ±
 3.5' RT. E 11°

CM-M
 B-M
 R-PC
 G.F

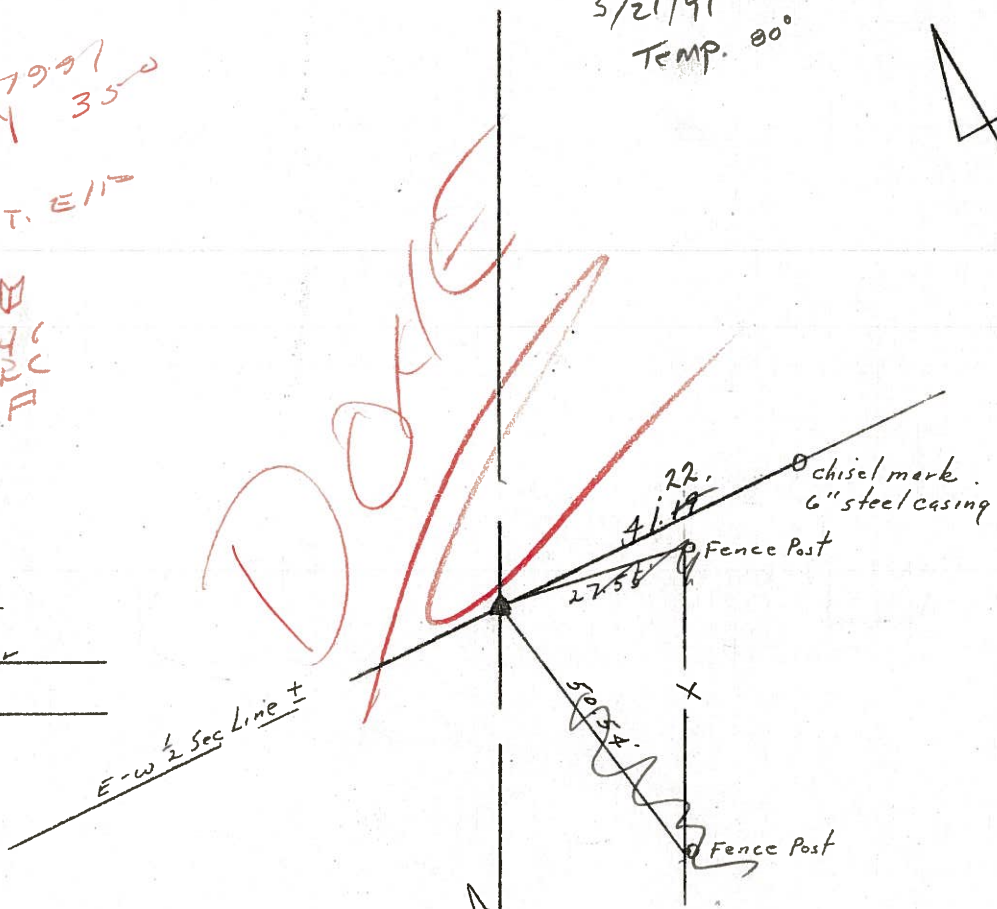
5/21/91
 Temp. 80°



487+53.55
 reset P.K. & Washer
 top R.R. spike

E-W 1/2 Sec Line ±

DO NOT



493x 3085
 487+53.55
 5477.30

R/W S.R. #67

County Seneca S.R. #67

Date 6/08/82

Township Scipio

Weather sunny

Section 29

Temp. 85°

T2N, R15E

Personnel Aronin

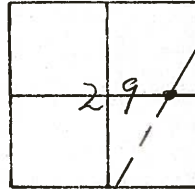
Ripple

Geyman

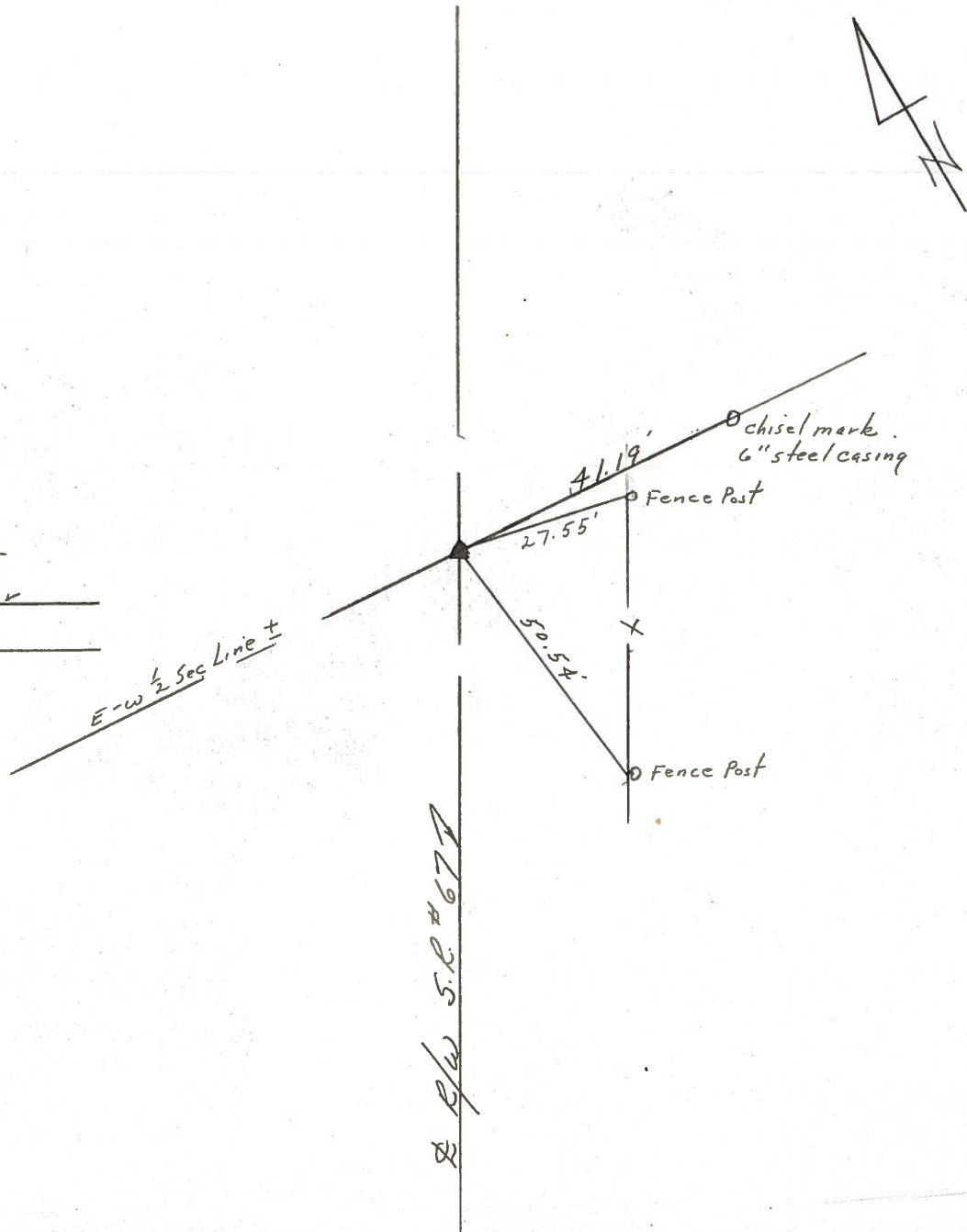
Mosser

Barbour

#23



487+53.55
Reset P.K. & Washer
atop R.R. spike



R/W S.R. #67

County Seneca S.R. # 67

Date 7-16-79

Township Scipion

Weather sunny

Section 29

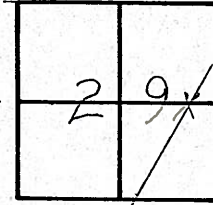
Temp. 82°

T 2 N, R 16 E

Personnel Schneider

Mosser

Barbour



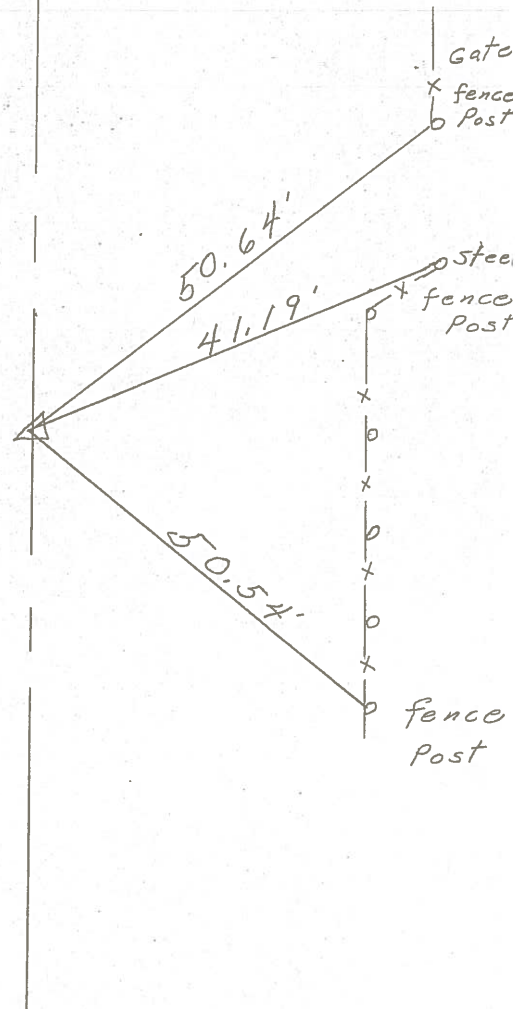
23



± S.R. # 67

487 + 53.55

R.R. spk. on ± R.1w



PERSONNEL TITLE PERSONNEL TITLE

COUNTY Seneca DATE 12-21-65

S. R. # 67 WEATHER

SEC TEMP.

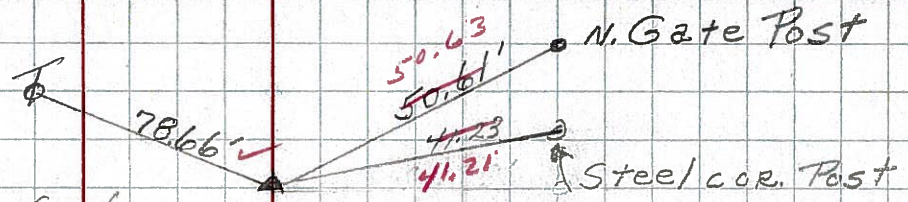
DESCRIPTION LEFT CENTER LINE RIGHT JOB NO.

2/13/69

FOUND IRON PIN
5" below surface

23

Sta 487+53.55
Small R.R. SPIKE on E of R/W
1" below surface



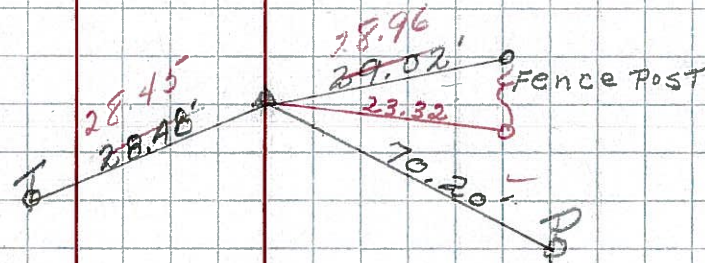
8426

~~288~~

FOUND 2/13/69

22

Sta 477+66.25
R.R SPIKE on E R/W
3" below surface



8425

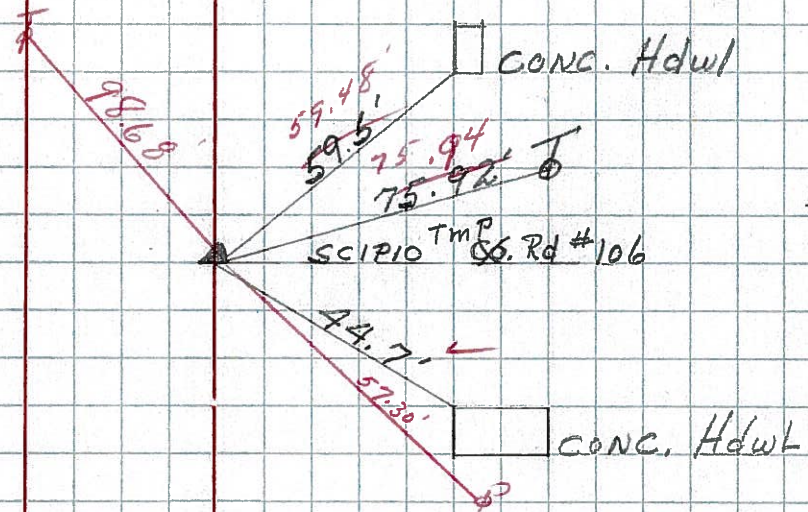
~~287~~

2/13/69

Found old R.R. Nail 6" below surface set R.R. spk.

21

Sta. 455+20.05
R.R SPIKE on E of R/W



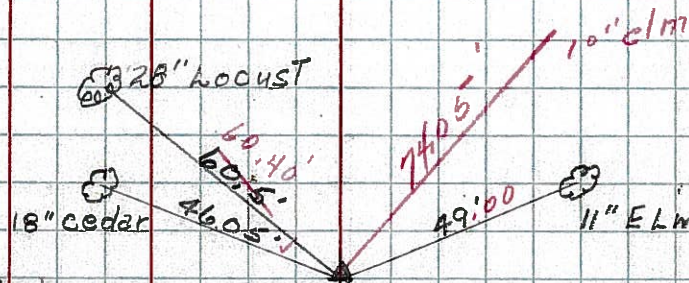
~~286~~

8424

20-13

Found R/W spk.
5" below surface

Sta. 410+54.7
IRON PIN on E of R/W



~~285~~

8422

PERSONNEL TITLE PERSONNEL TITLE

COUNTY Seneca

DATE

S. R. 67

WEATHER

SEC.

TEMP.

DESCRIPTION

LEFT

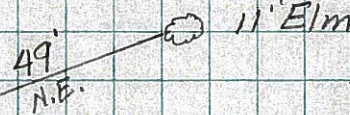
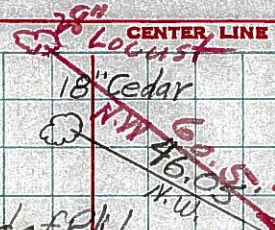
CENTER LINE

RIGHT

JOB NO.

20-B

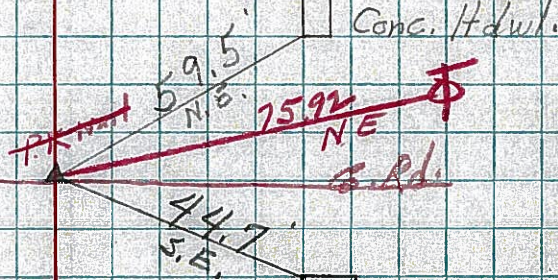
Sta. 410+54.7
Found Iron pin end of R/W
285



OK.
3-29-60

21

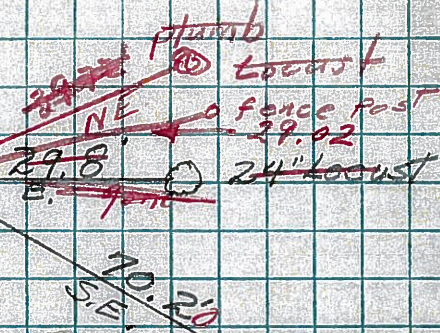
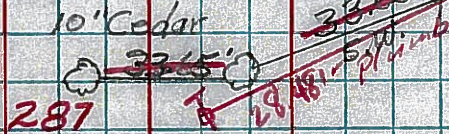
Sta. 455+20.05
R.R. Spike on ϕ of R/W
286



OK
3-29-60

22

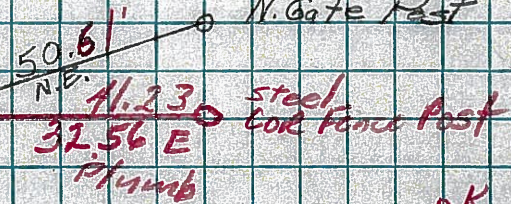
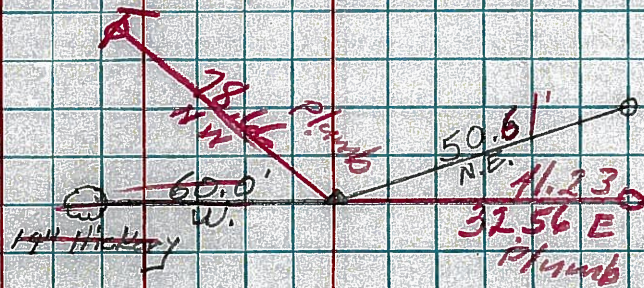
Sta. 477+66.25
R.R. Spike on ϕ of R/W
3"
10" Cedar
287



OK
3-29-60

23

Sta. 487+53.55
Small R.R. Spike on ϕ
1" of R/W
1 1/2" Hickory
288



OK
3-29-60