

O.D.O.T. DISTRICT 2 SURVEY OFFICE

PERSONNEL

REFERENCE NO. 25

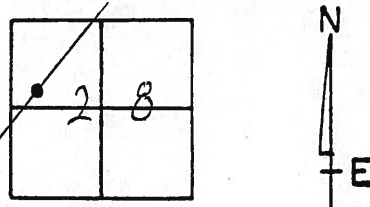
SHEET 17 OF 18

NOTES HOMAN
 H.C. MOSSER
 R.C. CANTERBURY
BARNHISEL
ROUSOS

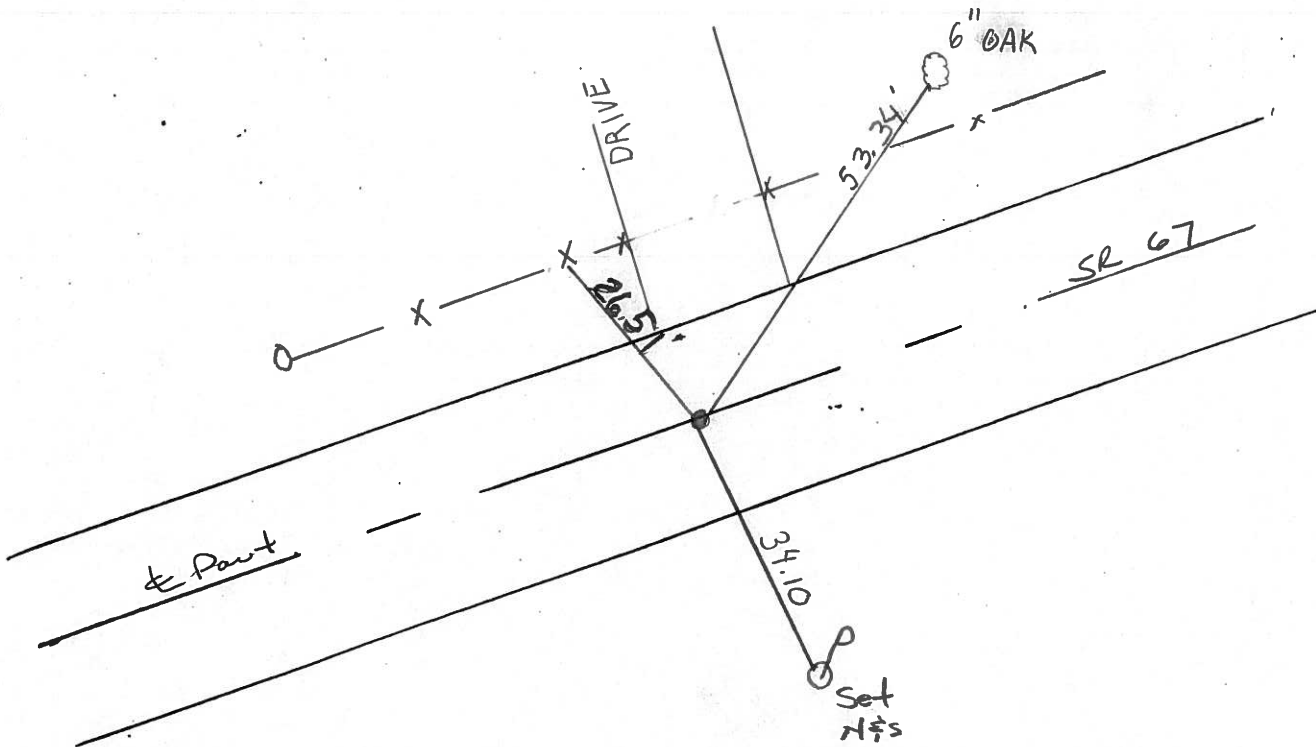
DATE 6-1-02
 WEATHER SUNNY
 TEMP. 80°

ROUTE 67
 COUNTY SENECA
 TOWNSHIP SCIPIO
 SECTION 28
T 2 N R 15 E

TYPE MONUMENT PK & WASHER
 ON SURFACE - ~~BELOW~~
~~LEFT~~ - PAV'T. - RIGHT .5' RT.
9.6' TO RT. EDGE PAVEMENT
 S.L.M. 505+92



Record: 505+26.70
 PK & WASHER ATOP
 R.R. SPIKE



SET MAG NAIL
 & WASHER
 9-14-02 D.C.H.

O.D.O.T. DISTRICT 2 SURVEY OFFICE

PERSONNEL

REFERENCE NO. 25

SHEET 7 OF 9

NOTES CHENEY

H.C. BARBOUR

R.C. RIFFLE

GEYMAN

DATE 12-10-1991

WEATHER CLOUDY

TEMP. 35°

ROUTE 67

COUNTY SENECA

TOWNSHIP SLIPID

SECTION 28

T 2 N R 15 E

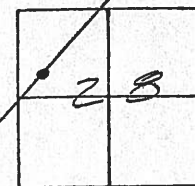
TYPE MONUMENT SET PK) WASHER

ON SURFACE - BELOW

LEFT - C. PAV'T. - RIGHT

25 TO RT. EDGE PAVEMENT

S.L.M. _____

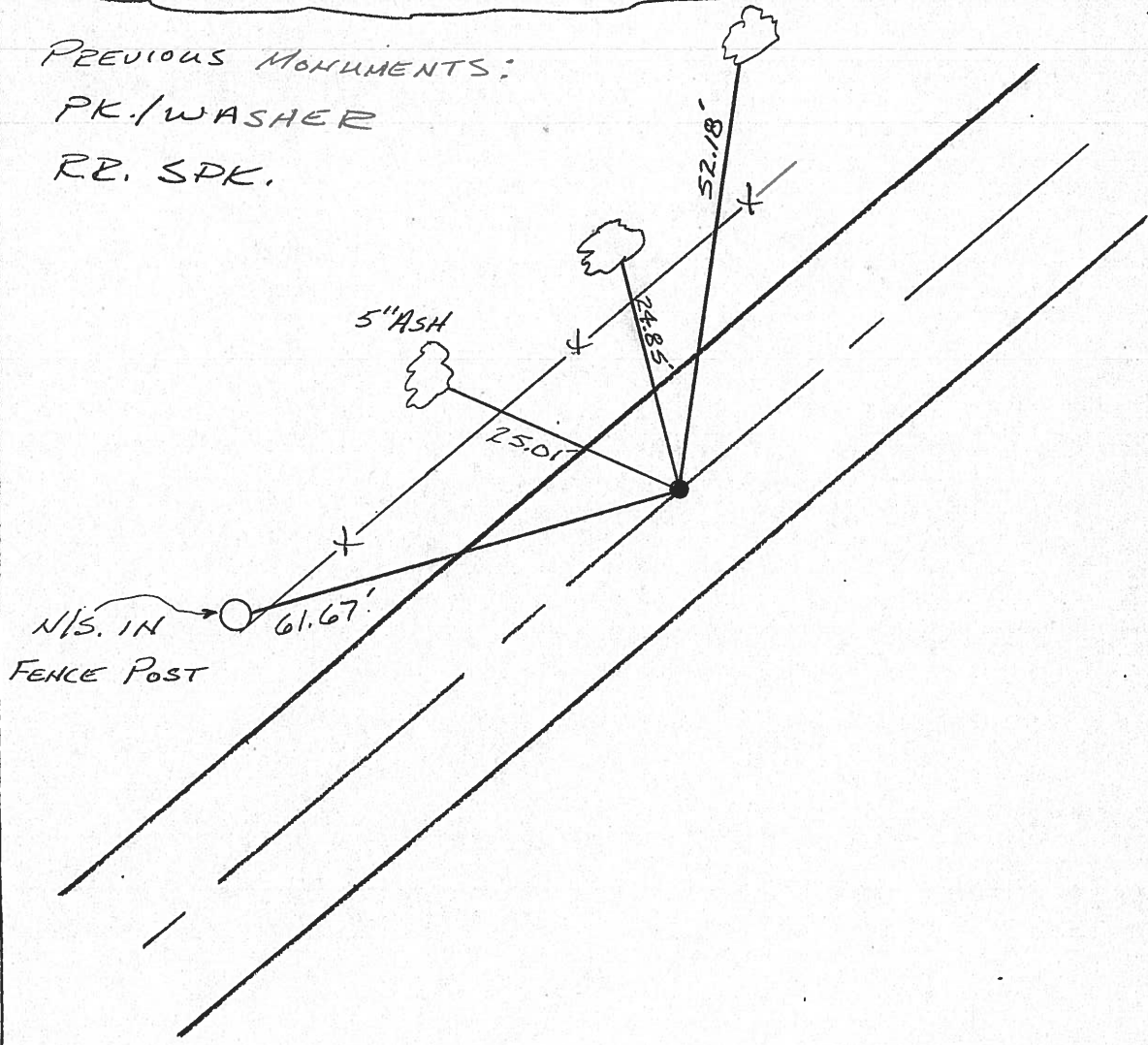


RECORD STA. 505+26.70

PREVIOUS MONUMENTS:

PK./WASHER

RR. SPK.



County Seneca S.R. #67

Date 6/08/82

Township Scipio

Weather _____

Section 28

Temp. _____

T2N, R15E

Personnel Cranin

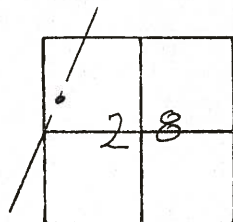
Ripple

Geyman

Mosser

Barbour

(25)



SET PK / WASH
12-10-91 CLOUD 7350

CH 10

13-HE

12-RE

G-A

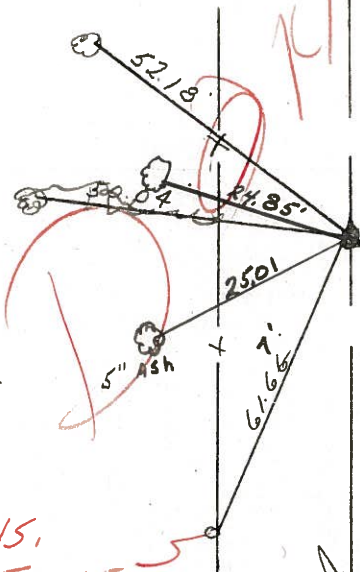
ON E

9.5' RT. E/P

5/21/91
TEMP 80°



505426.70
P. spike atop iron
114 - Reset P.K. E
Jasher



MIS.
FENCE
POST

S.P/W S.R. #67

County Seneca S.R. #67

Date 6/08/82

Township Scipio

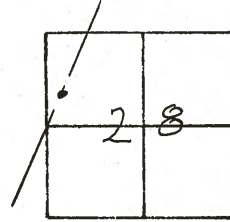
Weather _____

Section 28

Temp. _____

T2N, R15E

Personnel Cranin



#25

Ripple

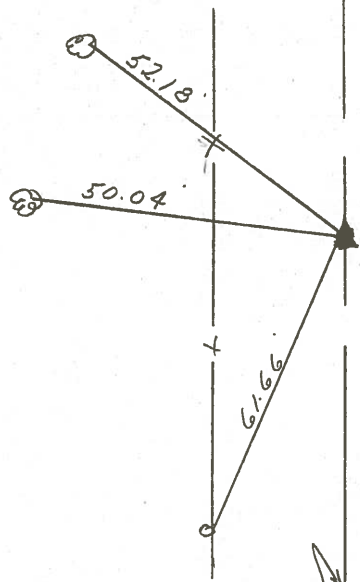
Geyman

Mossey

Barbour



505426.70
R.L. spike atop iron
pin - Resct P.K. E'
Washer



R/W S.R. #67

County Seneca S.R. #67

Date 7-16-79

Township Scipio

Weather Sunny

Section 28

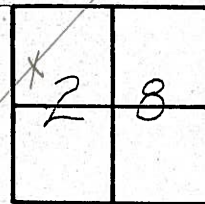
Temp. 82°

T2N, R16E

Personnel Schneider

Mosier

Barbour



¢ S.R. # 67

10" Elm

52.18'

50.04'

17" Oak

51.34'

26" Maple

505 + 26.7

R.R. spk. on ¢ R/w

Iron Pin 5" down



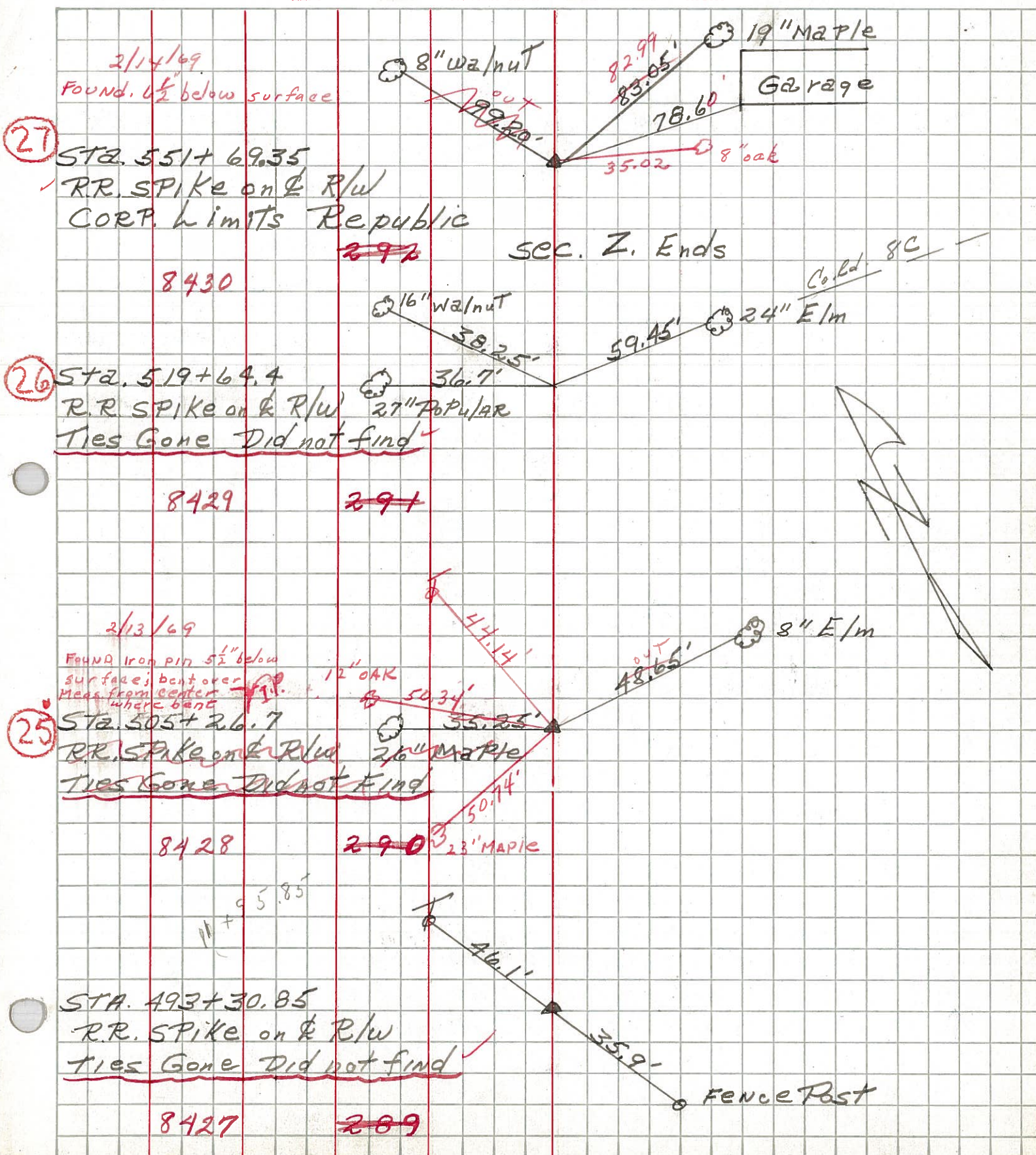
PERSONNEL TITLE PERSONNEL TITLE

COUNTY Seneca DATE 12-22-65

S. R. # 67 WEATHER

SEC. TEMP.

DESCRIPTION LEFT CENTER LINE RIGHT JOB NO.

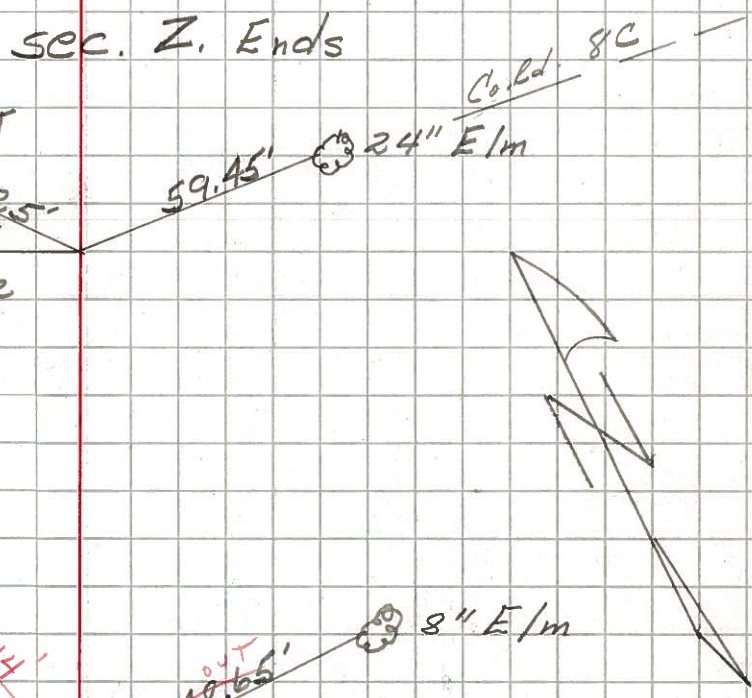


2/14/69
 Found. 6 1/2 below surface
 (27) STA. 551+69.35
 RR SPIKE on & R/W
 CORP. Limits Republic
 8430

(26) STA. 519+64.4
 RR SPIKE on & R/W
 Ties Gone Did not find
 8429

2/13/69
 Found Iron pin 5 1/2" below
 surface; bent over
 Meas. from center
 where bent
 (25) STA. 505+26.7
 RR SPIKE on & R/W
 Ties Gone Did not find
 8428

STA. 493+30.85
 RR SPIKE on & R/W
 Ties Gone Did not find
 8427



PERSONNEL TITLE PERSONNEL TITLE

COUNTY Seneca

DATE

S. R. 67

WEATHER

SEC.

TEMP.

DESCRIPTION

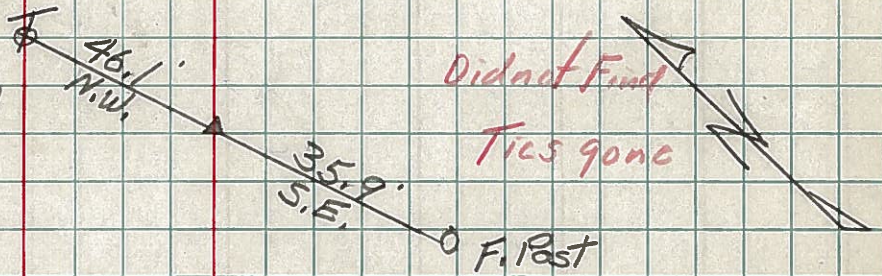
LEFT

CENTER LINE

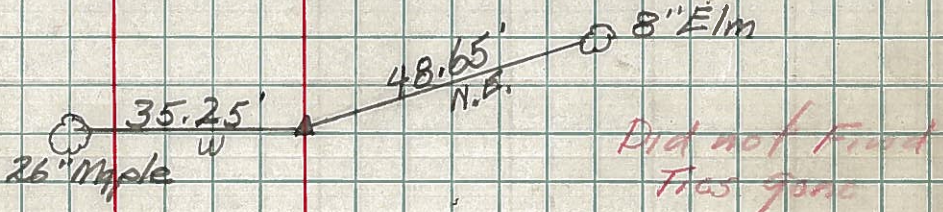
RIGHT

JOB NO.

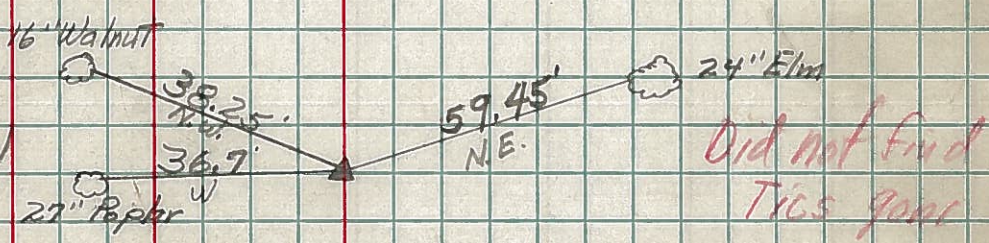
Sta. 493+30.85
R.R. Spike on end of R/W
289
5+71.3



25 Sta. 505+26.7
R.R. Spike on end of R/W
290



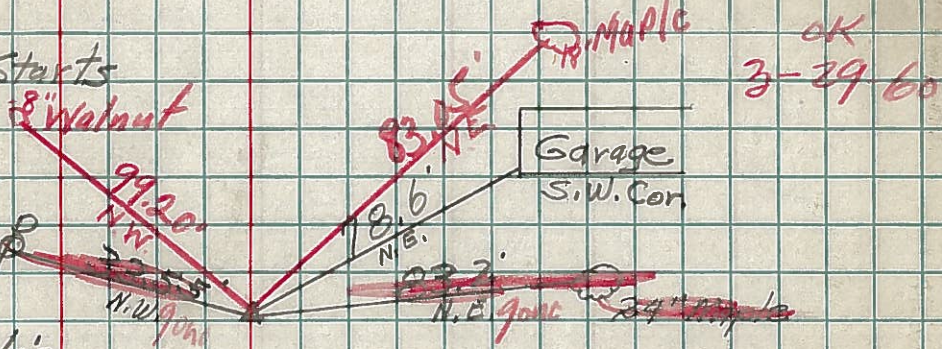
26 Sta. 519+64.4
R.R. Spike on end of R/W
291



Sec. P. Ends

Sec. Z. Starts

27 Sta. 551+69.35
R.R. Spike on end of R/W
Corp. Limits Republic
292

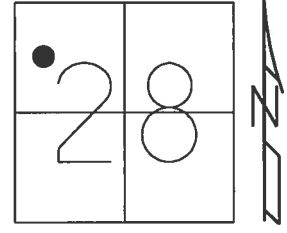


Sec. Z. Ends

O.D.O.T. DISTRICT 2 SURVEY OFFICE (USE ONLY)

PERSONNEL _____ REFERENCE NO. 25 SHEET 21 OF 25
 NOTES RHOADES DATE 6/13/17 ROUTE SR 67
 H.C. O'DONNELL WEATHER SUNNY COUNTY SENECA
 R.C. POORE TEMP. 91° TOWNSHIP SCIPIO
 _____ SECTION 28
 _____ T 2 N R 16 E

TYPE MONUMENT MAG/WASHER
 ON SURFACE - ~~BELOW~~ ON
~~LEFT~~ - C PAV'T - RIGHT 0.5'
9.6' TO RT EDGE PAVEMENT
 S.L.M. 505+20.55
 Grid: Northing: 525103.454 Easting: 1821685.566



RECORD:
 505+26.70
 P.K./WASHER ATOP
 R.R.SPIKE
 FD P.K./WASHER
 6/1/02, DCH
 SET MAG/WASHER
 9/14/02, DCH
 FD MAG/WASHER
 REF25
 2/5/16, JFO
 SET MAG/WASHER
 11/14/17, JFO

