

O.D.O.T. DISTRICT 2 SURVEY OFFICE (USE ONLY)

PERSONNEL _____ REFERENCE NO. 26 SHEET 22 OF 25

NOTES RHOADES DATE 6/13/17 ROUTE SR 67
 H.C. O'DONNELL WEATHER SUNNY COUNTY SENECA
 R.C. POORE TEMP. 91' TOWNSHIP SCIPIO
 SECTION 28
 T 2 N R 16 E

TYPE MONUMENT MAG/WASHER

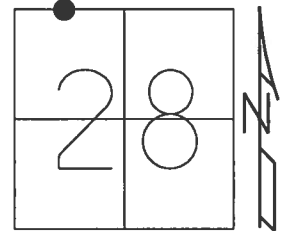
~~ON SURFACE~~ - BELOW 2"

LEFT - CL PAV'T - ~~RIGHT~~ 0.5'

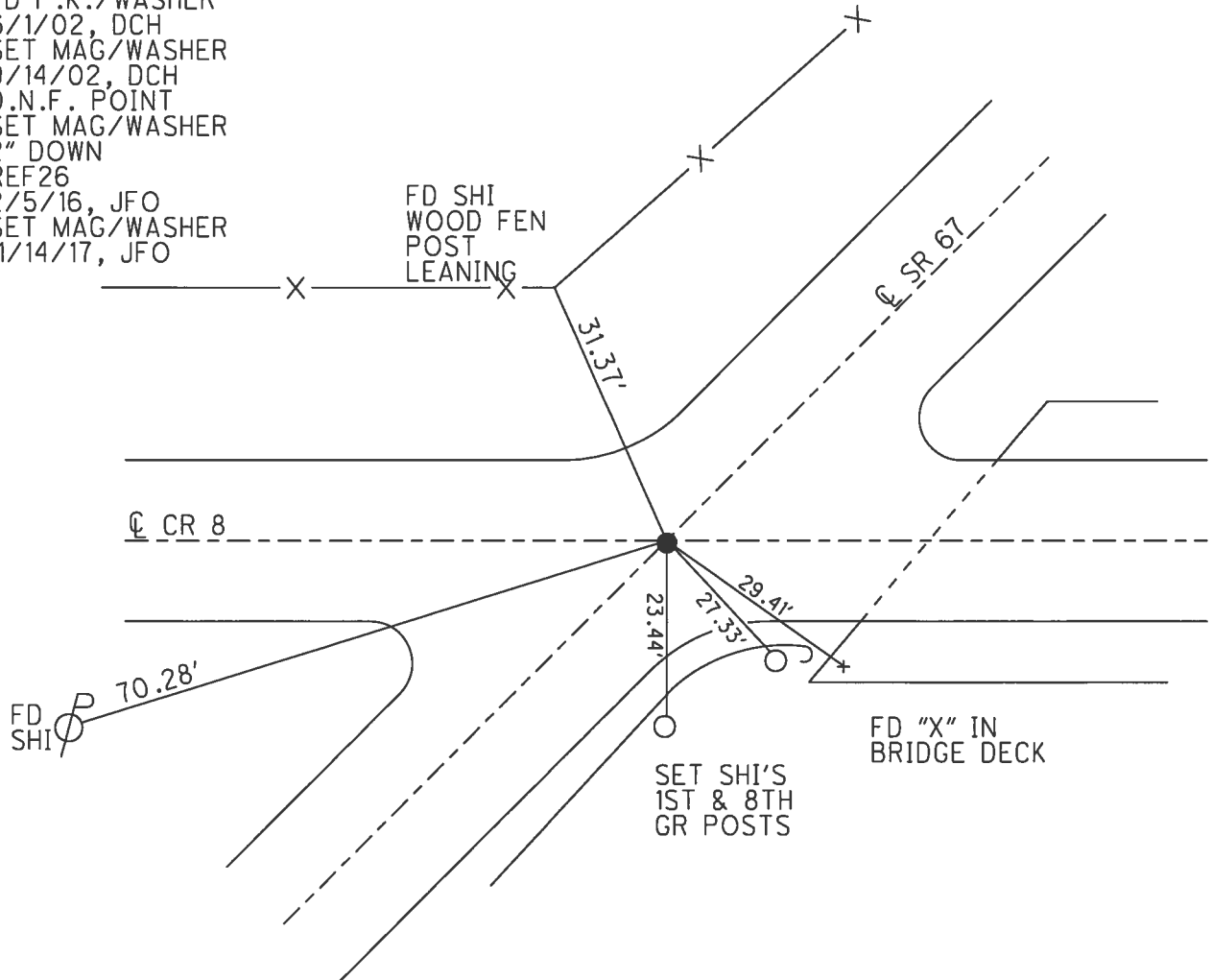
TO EDGE PAVEMENT

S.L.M. 519+54.98

GRID: NORTHING: 526292.931 EASTING: 1822487.272



RECORD:
 519+64.40
 P.K./WASHER ATOP
 R.R.SPIKE
 FD P.K./WASHER
 6/1/02, DCH
 SET MAG/WASHER
 9/14/02, DCH
 D.N.F. POINT
 SET MAG/WASHER
 2" DOWN
 REF26
 2/5/16, JFO
 SET MAG/WASHER
 11/14/17, JFO



O.D.O.T. DISTRICT 2 SURVEY OFFICE

PERSONNEL

REFERENCE NO. 26

SHEET 18 OF 18

NOTES HOMAN

H.C. MOSSER

R.C. CANTERBURY

BARNHISEL

ROUSOS

DATE 6-1-02

WEATHER SUNNY

TEMP. 80°

ROUTE 67

COUNTY SENECA

TOWNSHIP SCIPIO

SECTION 28

T 2 N R 15 E

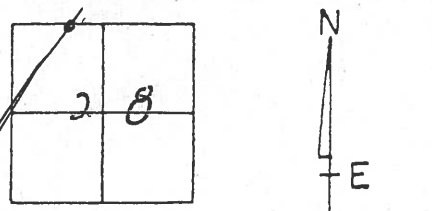
TYPE MONUMENT PK + WASHER

ON SURFACE - ~~BELOW~~

LEFT - & PAV'T. - RIGHT .5' LT.

- TO - EDGE PAVEMENT

S.L.M. 520 + 28



Records: 519+64.40
PK + WASHER ATOP
R.R. SPIKE

Point is 1.0' North
of & west

1' NORTH & WEST

SEC # 21

SEC # 28

TR

8

Set
NFS

70.27

61.29

31.16

29.41

43.66



ABUTMENT

Ed. '4' IN BRIDGE DECK

NEAR BEVELED
EDGE WINGWALL
@ BRIDGE
DECK

& Point

SET MAG NAIL
& WASHER

9-14-02 D.C. H.

O.D.O.T. DISTRICT 2 SURVEY OFFICE

PERSONNEL _____

REFERENCE NO. 26

SHEET 8 OF 9

NOTES CHENEY

H.C. BARBOUR

R.C. RIPPLE

GEYMAN

DATE 12-10-1991

WEATHER CLOUDY

TEMP. 35°

ROUTE 67

COUNTY SENECA

TOWNSHIP SCIPIO

SECTION 28

T2N R15E

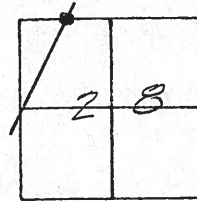
TYPE MONUMENT SET PK/WASHER

ON SURFACE - BELOW

LEFT - & PAV'T. - RIGHT

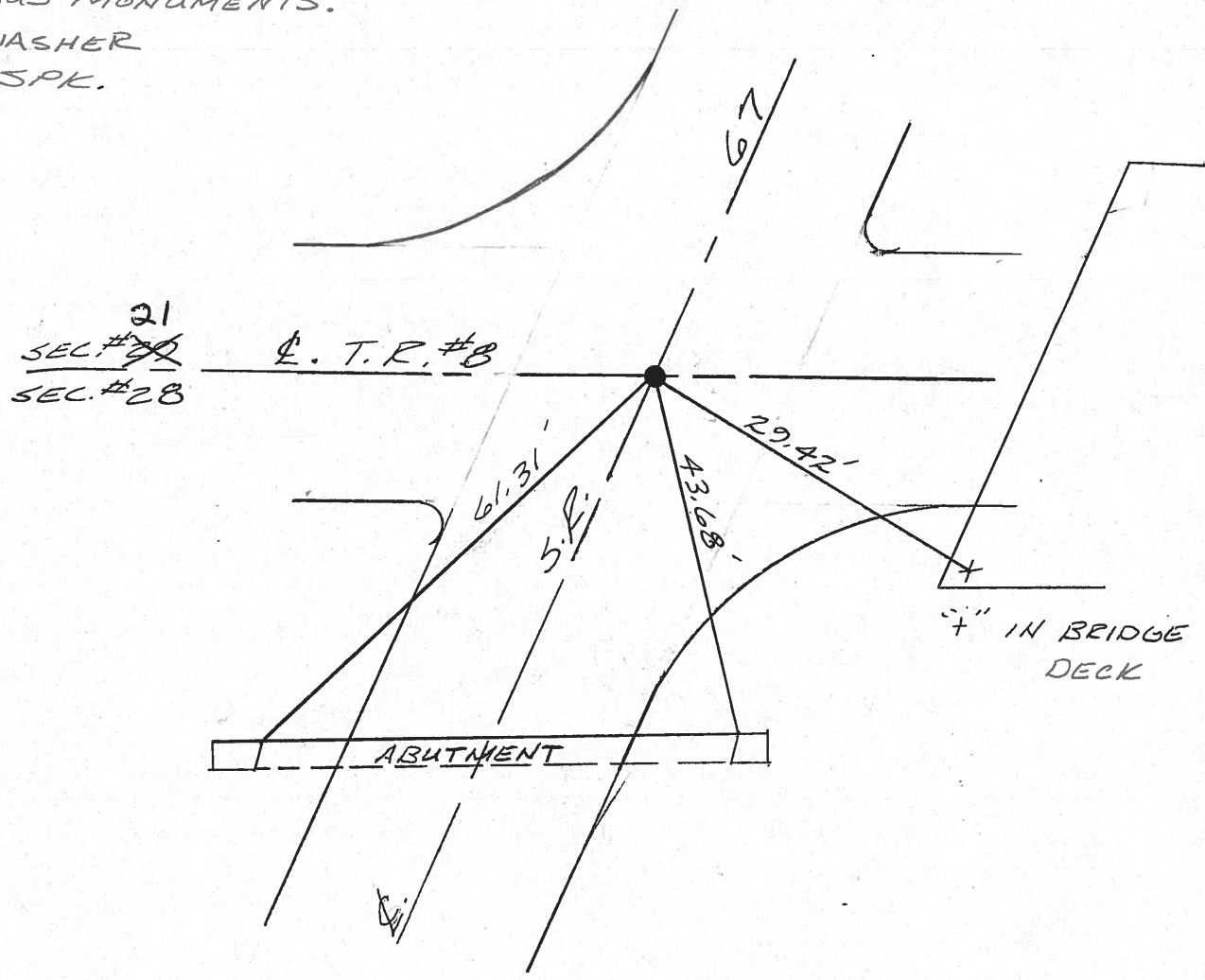
TO EDGE PAVEMENT

S.L.M. _____



RECORD STA. 519+64.40

PREVIOUS MONUMENTS:
 PK/WASHER
 R.R. SPK.



County Seneca S.R. #67

Date 6/08/82

Township Scipio

Weather Sunny

Section #28

Temp. 85°

T2N, R15E

Personnel Cranin

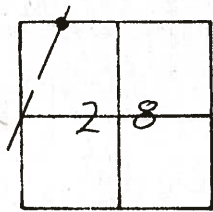
Ripple

Geyman

Mosser

Barbour

(26)



SET PK / WASH
12-10-91 CLOUDY 35°
CH
B-NC
R-RC
G-F
ON E.

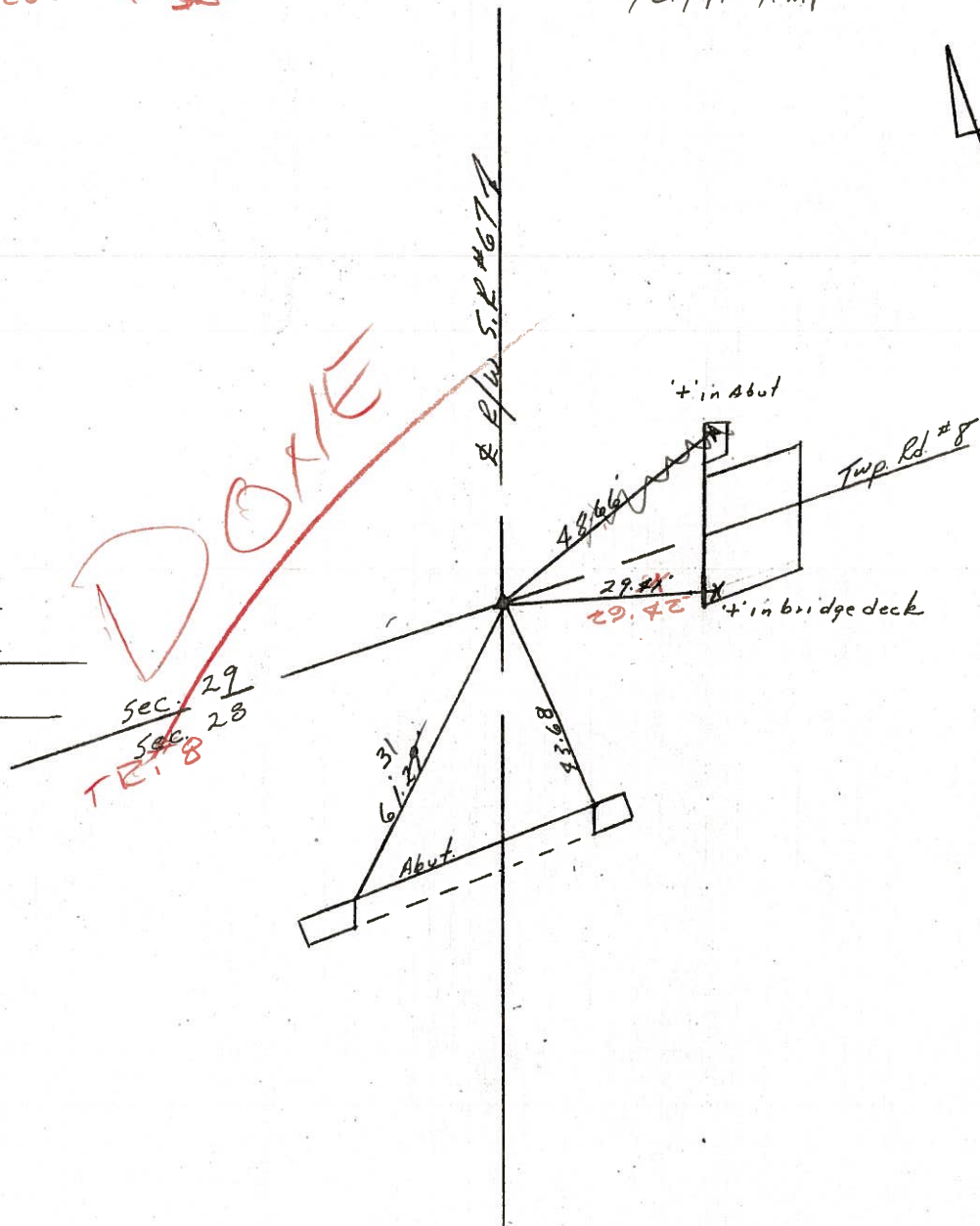
5/21/91 Temp 80°

519+64.40

Reset PK & Washer

at top R.R. spike

DOORIE



County Seneca S.R. #67

Date 6/08/82

Township Scipio

Weather Sunny

Section #28

Temp. 85°

T2N, R15E

Personnel Cronin

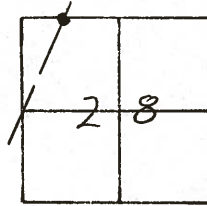
Ripple

Geyman

Mosser

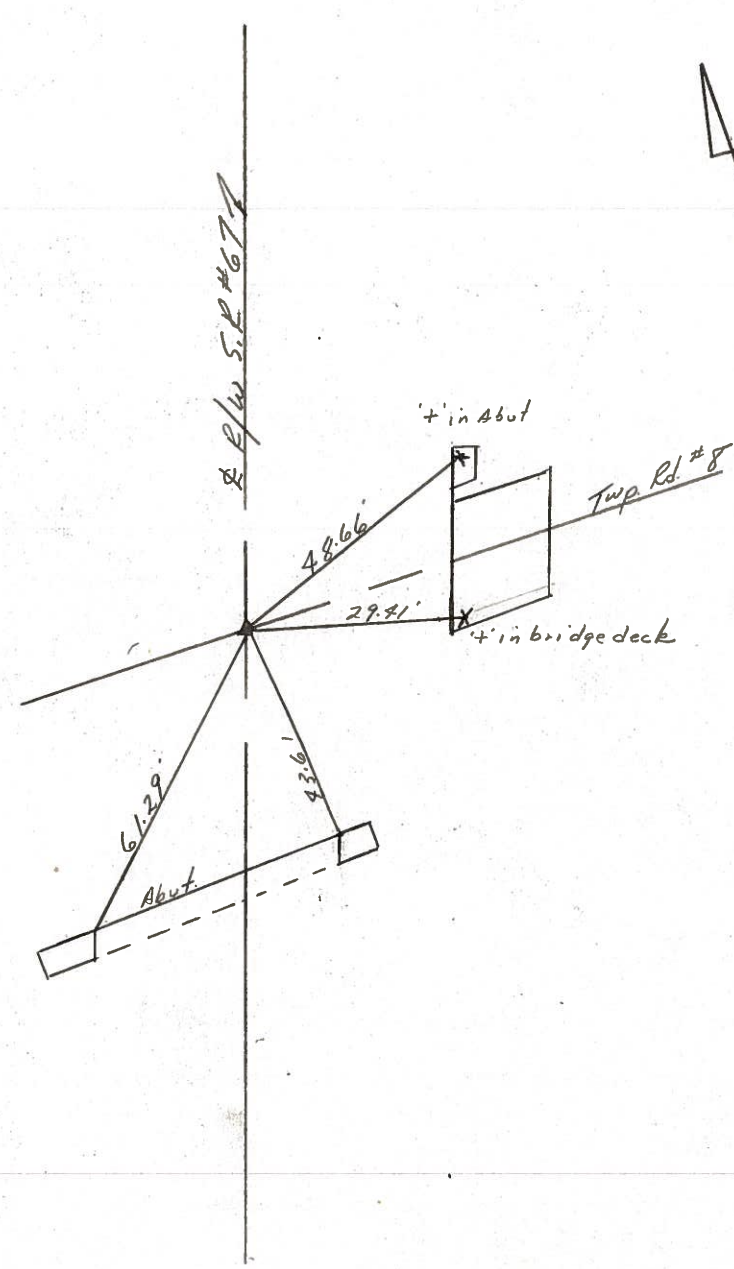
Barbour

#26



519+67.40
 Reset P.K. & Washer
 atop R.R. spike

sec. 29
 sec. 28



County Seneca S.R. #67

Date 6-17-79

Township Scipio

Weather Sunny

Section 28

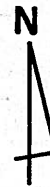
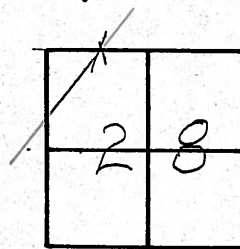
Temp. 72°

T2N, R16E

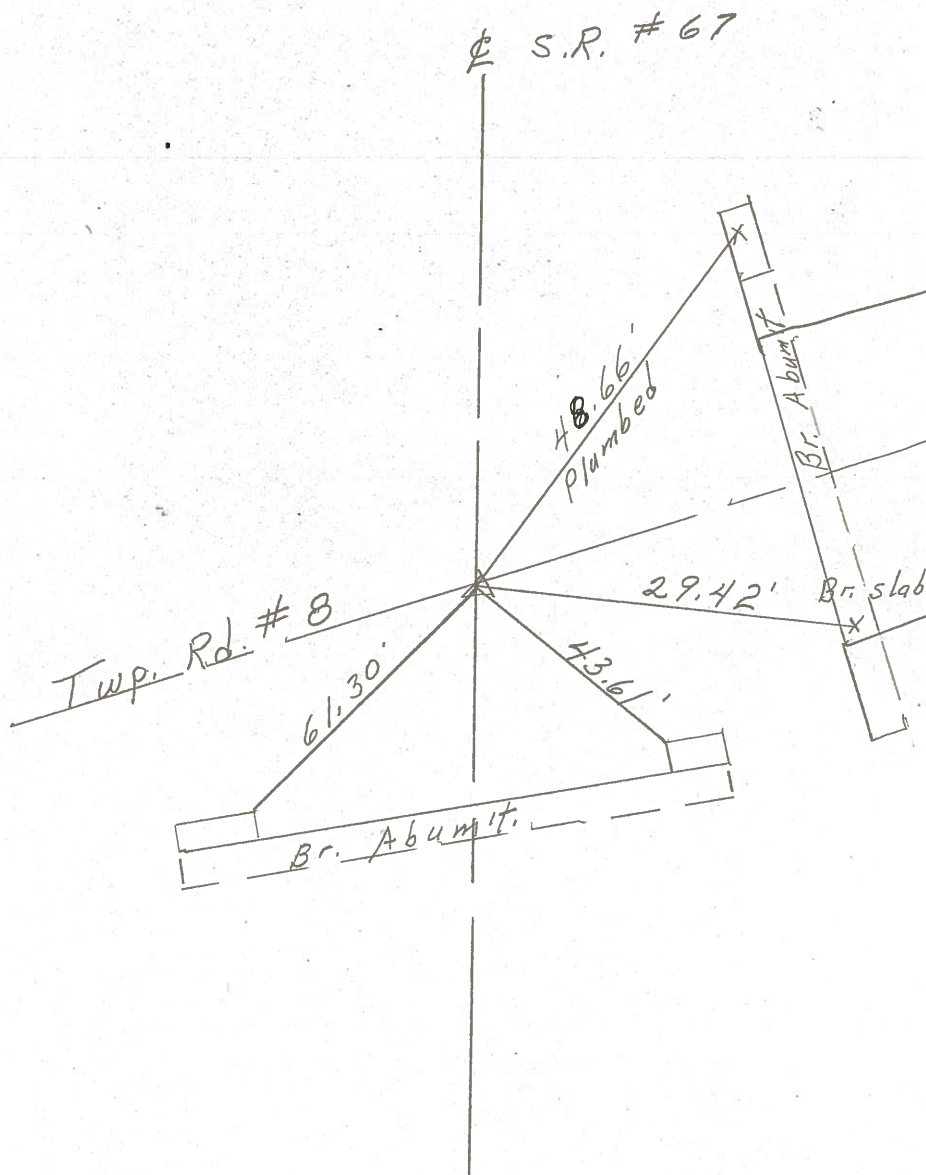
Personnel schneider

Mosser

Barbour



519+64.4
R.R. spk. on ϕ R/W



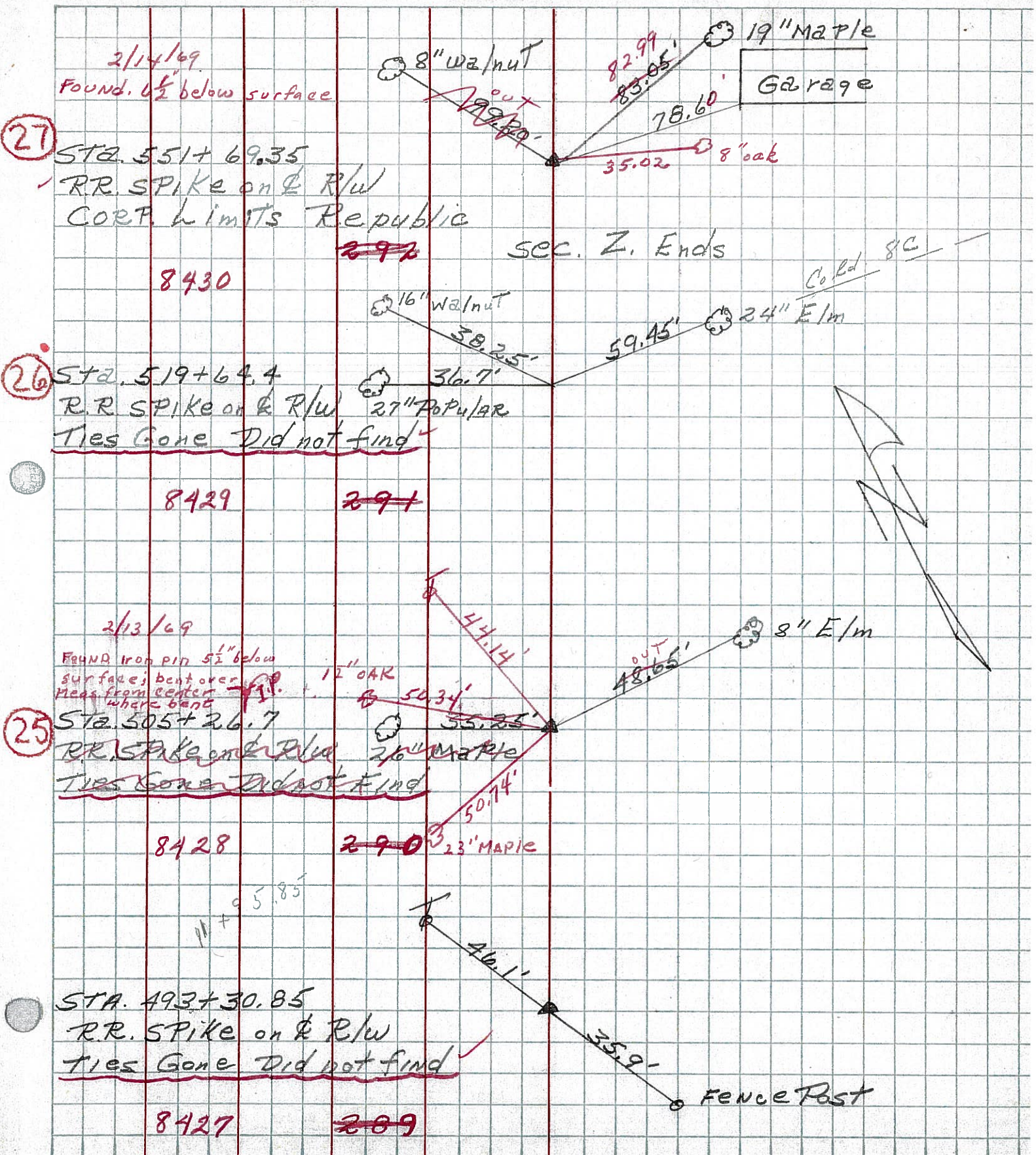
PERSONNEL TITLE PERSONNEL TITLE

COUNTY Seneca DATE 12-22-65

S. R. # 67 WEATHER

SEC TEMP

DESCRIPTION LEFT CENTER LINE RIGHT JOB NO.



PERSONNEL TITLE PERSONNEL TITLE

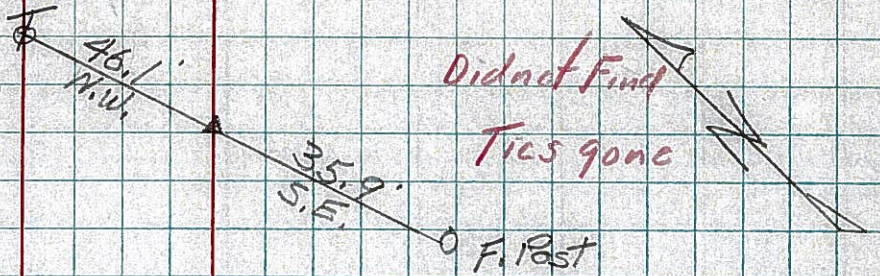
COUNTY Seneca DATE

S. R. 67 WEATHER

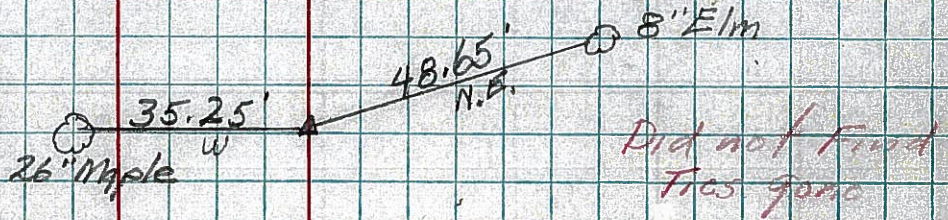
SEC. TEMP.

DESCRIPTION LEFT CENTER LINE RIGHT JOB NO.

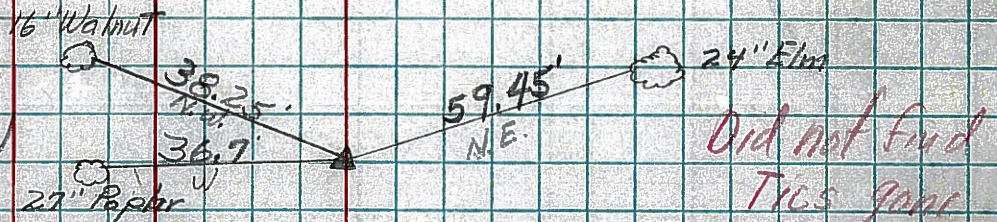
Sta. 493+30.85
R.R. Spike on $\frac{1}{2}$ of R/W
289
5+71.3



(25) Sta. 505+26.7
R.R. Spike on $\frac{1}{2}$ of R/W
290



(26) Sta. 519+64.4
R.R. Spike on $\frac{1}{2}$ of R/W
291

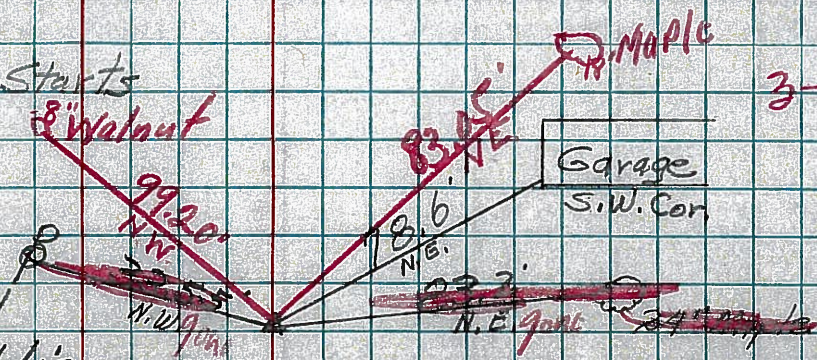


Sec. P. Ends

Sec. Z. Starts

OK
3-29-60

(27) Sta. 551+62.35
R.R. Spike on $\frac{1}{2}$ of R/W
Corp. Limits Republic
292



Sec. Z. Ends