

O.D.O.T. DISTRICT 2 SURVEY OFFICE (USE ONLY)

PERSONNEL _____ REFERENCE NO. 27 SHEET 23 OF 25

NOTES	RHOADES	DATE	6/13/17	ROUTE	SR 67
H.C.	O'DONNELL	WEATHER	SUNNY	COUNTY	SENECA
R.C.	POORE	TEMP.	91°	TOWNSHIP	SCIPPIO
				SECTION	21
				T	2 N
				R	16 E

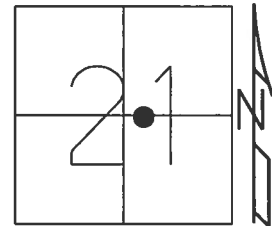
TYPE MONUMENT MAG/WASHER

ON SURFACE - ~~BELOW~~ ON _____

~~LEFT~~ - CL PAV'T - RIGHT 2.0'

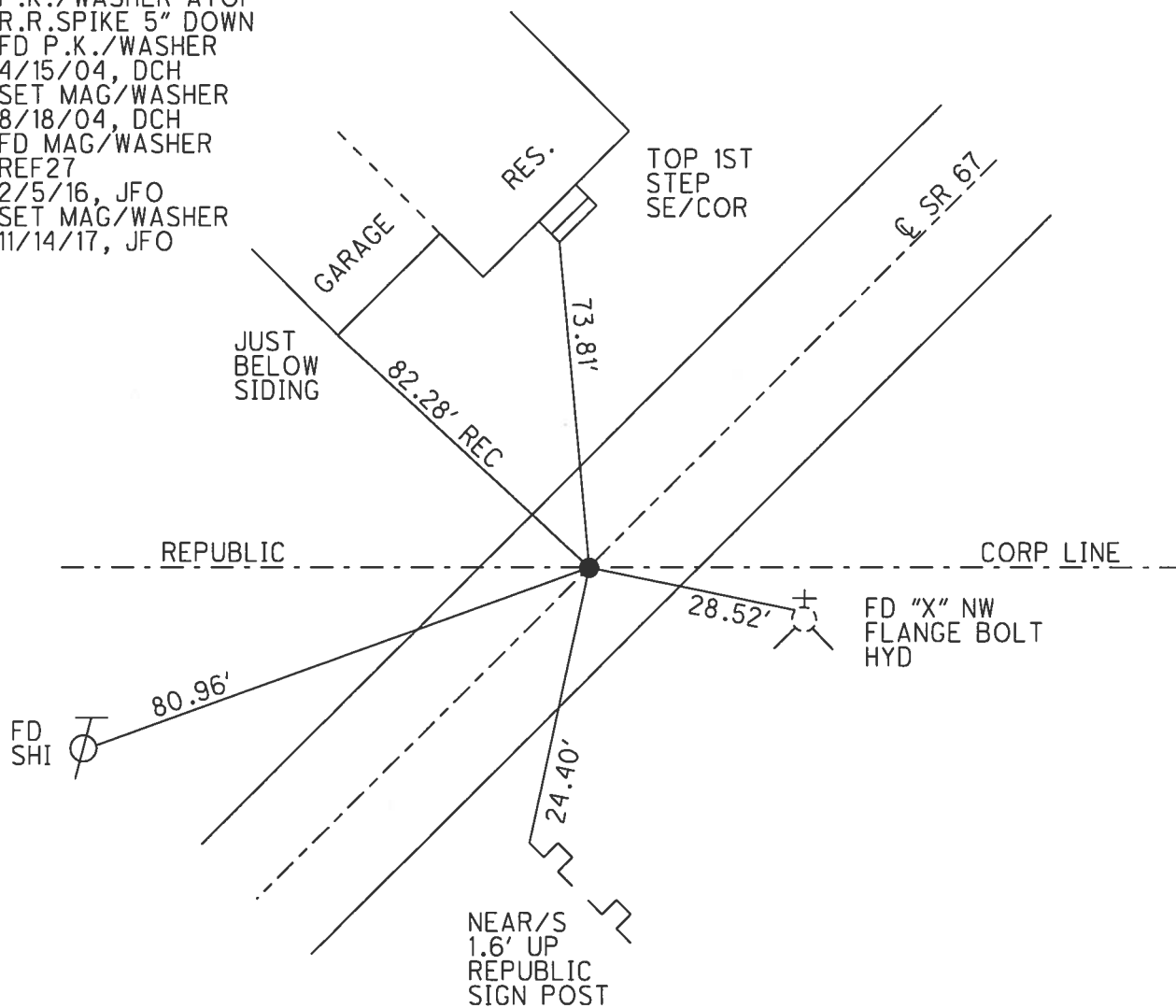
- TO - EDGE PAVEMENT

S.L.M. 551+62.55



GRID: NORTHING: 528945.766 EASTING: 1824290.316

RECORD:
 551+69.35
 P.K./WASHER ATOP
 R.R.SPIKE 5" DOWN
 FD P.K./WASHER
 4/15/04, DCH
 SET MAG/WASHER
 8/18/04, DCH
 FD MAG/WASHER
 REF27
 2/5/16, JFO
 SET MAG/WASHER
 11/14/17, JFO

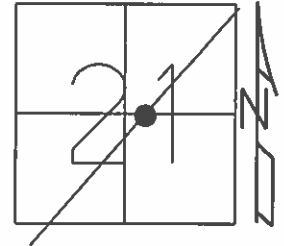


O.D.O.T. DISTRICT 2 SURVEY OFFICE (USE ONLY)

PERSONNEL _____ REFERENCE NO. 27 SHEET 1 OF 3

NOTES HOMAN DATE 4/15/04 ROUTE SR 67
 H.C. NUHFER WEATHER SUNNY COUNTY SENECA
 R.C. HOOVER TEMP. 50° TOWNSHIP SCIPIO
 _____ SECTION 21
 _____ T 2 N R 16 E

TYPE MONUMENT P.K./WASHER
 ON SURFACE - ~~BELOW~~ ON
~~LEFT~~ - C PAV'T - RIGHT 2.0'
 - TO - EDGE PAVEMENT
 S.L.M. 551+48

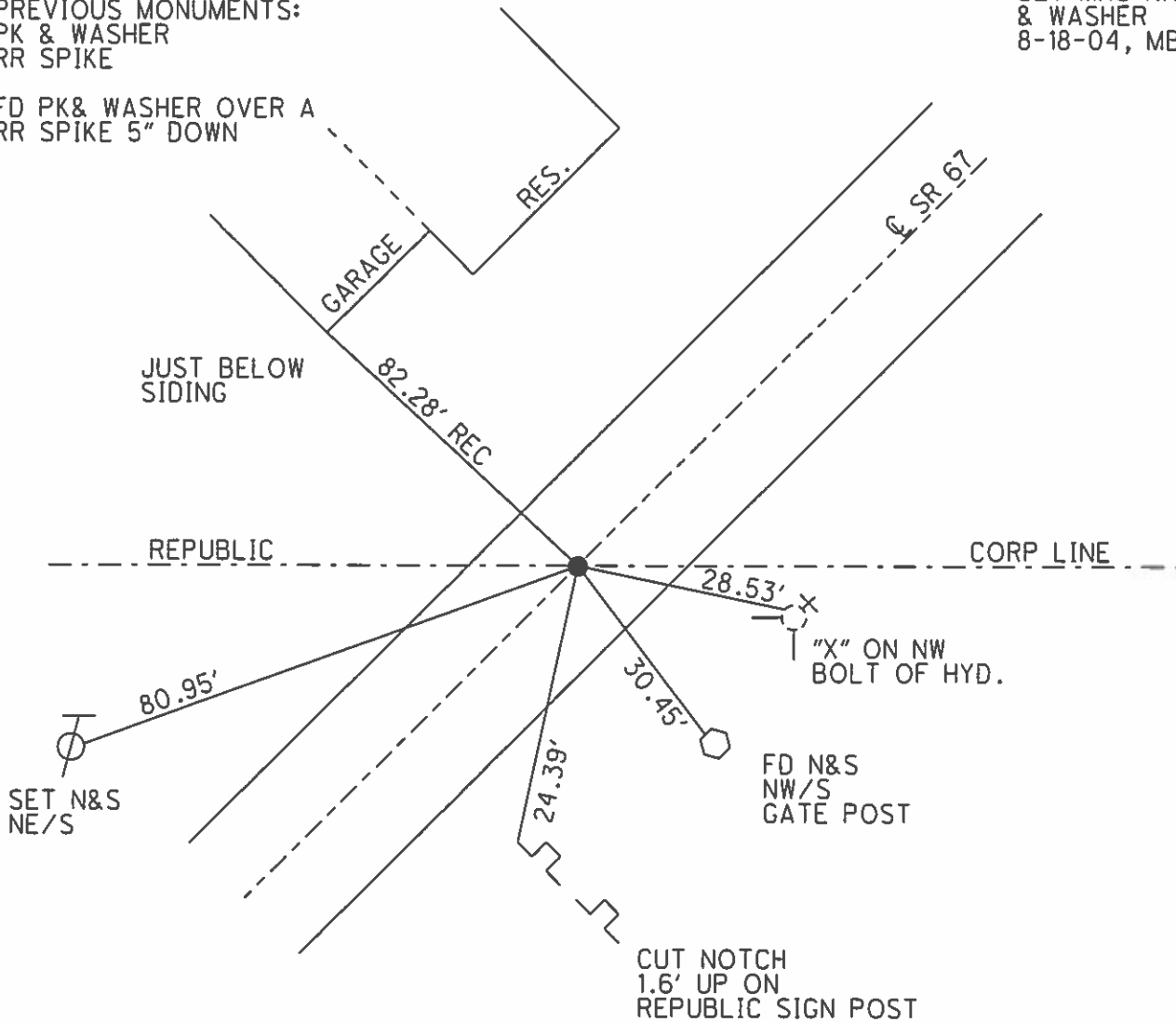


GRID: NORTHING: 528945.766 EASTING: 1824290.316

RECORD STA 551+69.35
 PREVIOUS MONUMENTS:
 PK & WASHER
 RR SPIKE

SET MAG NAIL
 & WASHER
 8-18-04, MB

FD PK& WASHER OVER A
 RR SPIKE 5" DOWN



Resurfaced 2004 - Cold in place -

O.D.O.T. DISTRICT 2 SURVEY OFFICE

PERSONNEL

REFERENCE NO. 27

SHEET 2 OF 2

NOTES CAENEY

H.C. BARBOUR

R.C. RIPPLE

GEYMAN

DATE 12-10-1991

WEATHER CLOUDY

TEMP. 35°

ROUTE 67

COUNTY SENECA

TOWNSHIP SCIPLO

SECTION 21

T2 N R 15 E

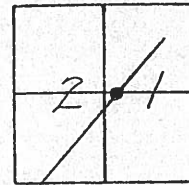
TYPE MONUMENT SET PK/WASHER

ON SURFACE - BELOW

~~LEFT~~ - C PAV'T. - RIGHT 2'

7.5' TO ET. EDGE PAVEMENT

S.L.M. _____

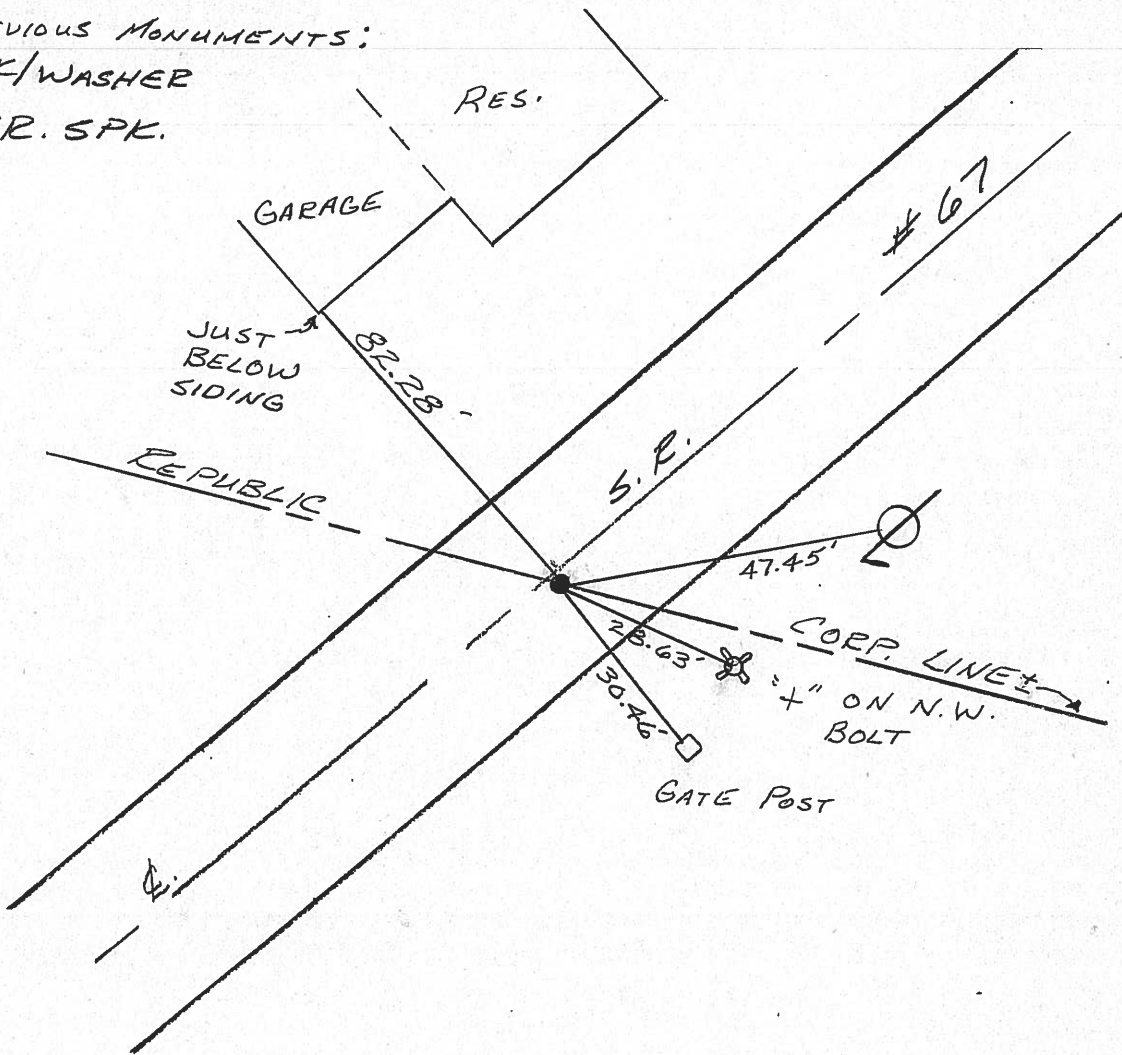


RECORD STA. 551469.35

PREVIOUS MONUMENTS:

PK/WASHER

R.R. SPK.



County Seneca S.R. 67

Date 6/08/82

Township Scipio

Weather SUNNY

Section 21

Temp. 85°

T2N, R1E

Personnel Cronin

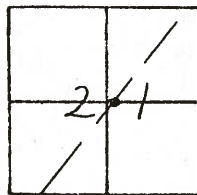
Ripple

Geyman

Masser

Barbour

(27)



SET P.K. / WASHER 12-10-91 35°

CH 11

B.H.C

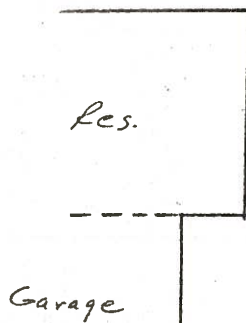
12-10-91

G-P

2' R.F.

~~7.5~~

7.5 RT EIP



Garage

Res.

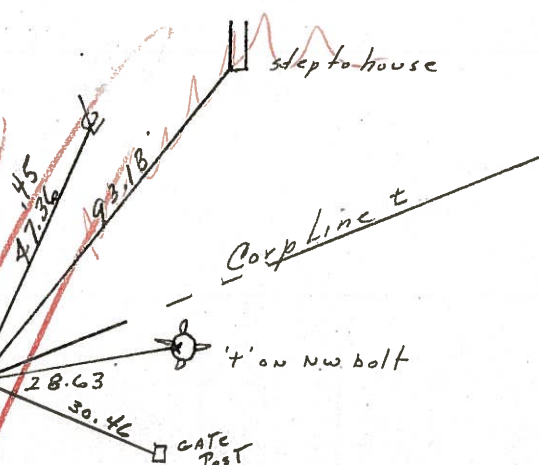
Just below siding

REPUBLIC

82.26' 28

wooden post

R/R/W S.R. #67



step to house

Corp line

4' on NW bolt

GATE Post

45
47.36

28.63

30.46

93.18

51+69.35

set P.K. & Washer at top

R.R. spike

County Seneca S.R. 67

Date 6/08/82

Township Scipio

Weather Sunny

Section 21

Temp. 85°

T2N, R15E

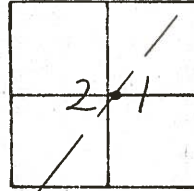
Personnel Cronin

Ripple

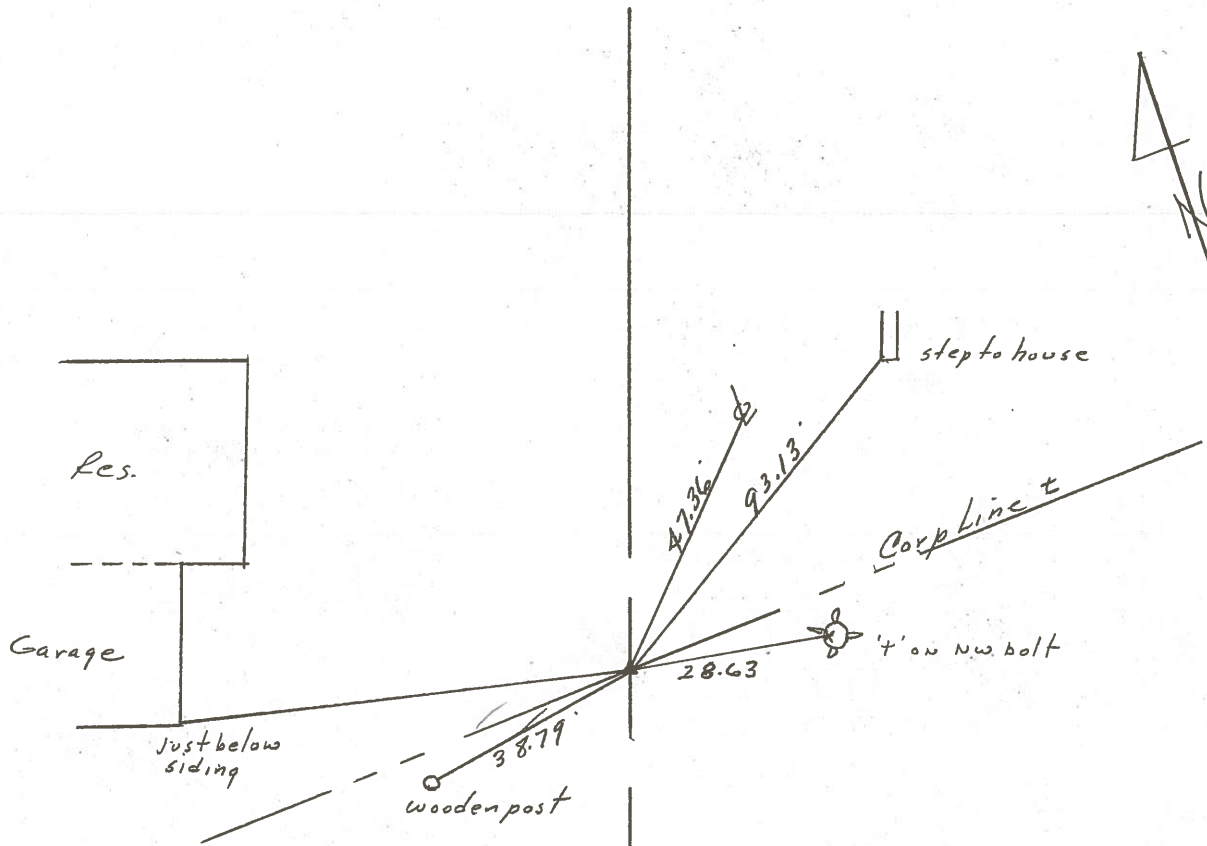
Geyman

Mosser

Barbour



#27



551 + 69.35

Reset P.K. & Washer at top

R.R. spike

R.R/W S.R. #67

County Seneca S.R. # 67

Date 7-17-79

Township Scipio

Weather Sunny

Section 21

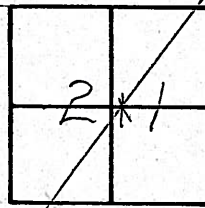
Temp. 72°

T2N, R14E

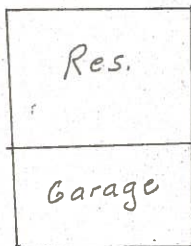
Personnel Schneider

Mosser

Barbour



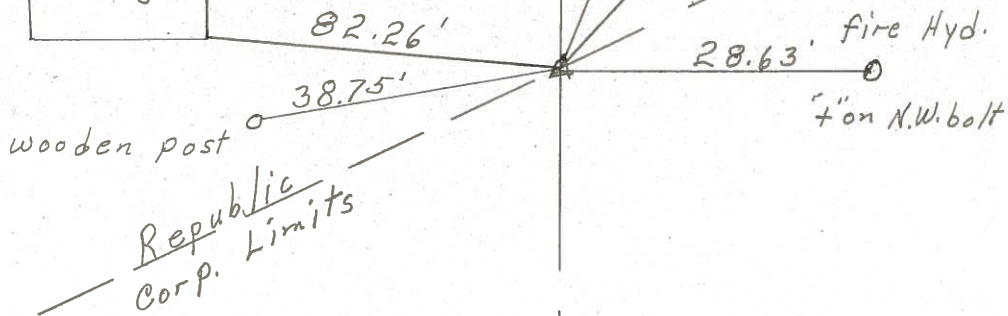
27



551 + 69.35

R.R. spk. on & R/w

1' Rt of &



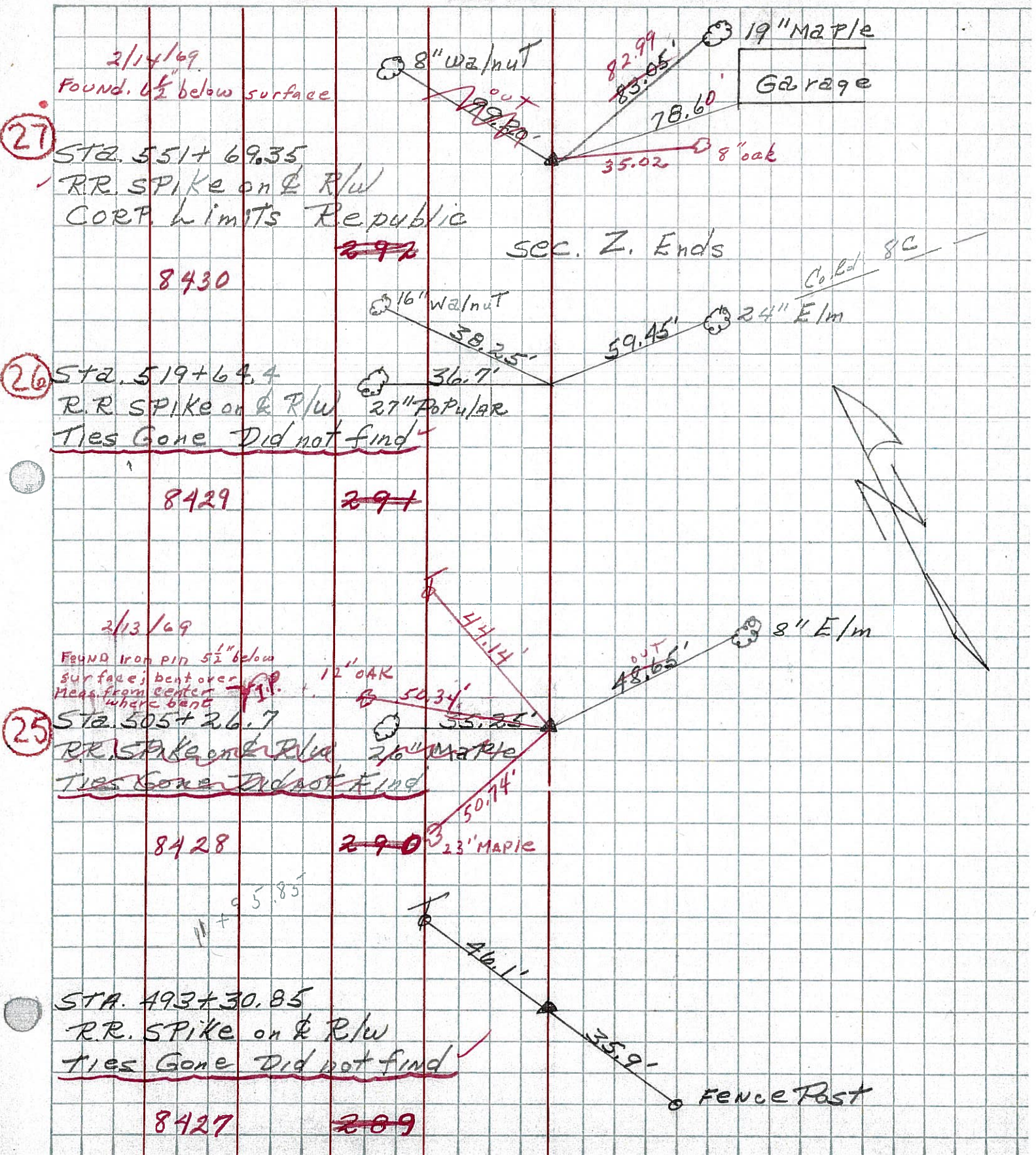
PERSONNEL TITLE PERSONNEL TITLE

COUNTY Seneca DATE 12-22-65

S. R. # 67 WEATHER

SEC. TEMP.

DESCRIPTION LEFT CENTER LINE RIGHT JOB NO.



PERSONNEL TITLE PERSONNEL TITLE

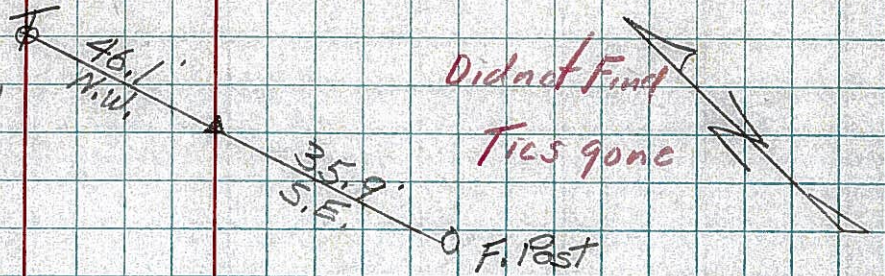
COUNTY Seneca DATE

S. R. 67 WEATHER

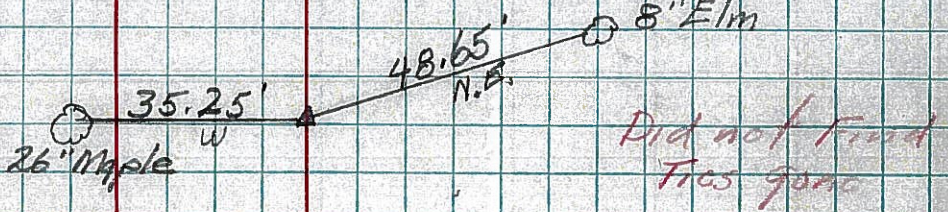
SEC. TEMP.

DESCRIPTION LEFT CENTER LINE RIGHT JOB NO.

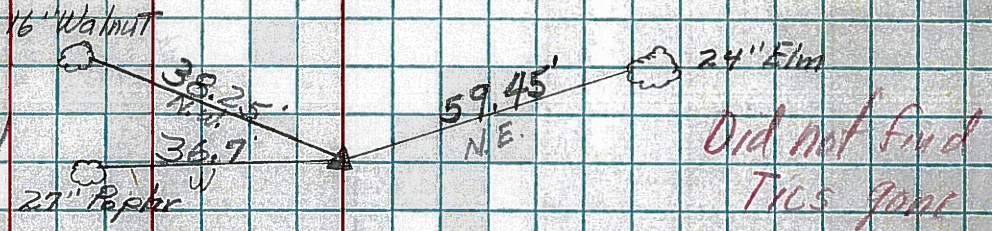
Sta. 493+30.85
R.R. Spike on $\frac{1}{2}$ of R/W
289
5+71.3



25 Sta. 505+26.7
R.R. Spike on $\frac{1}{2}$ of R/W
290



26 Sta. 519+64.4
R.R. Spikes on $\frac{1}{2}$ of R/W
291

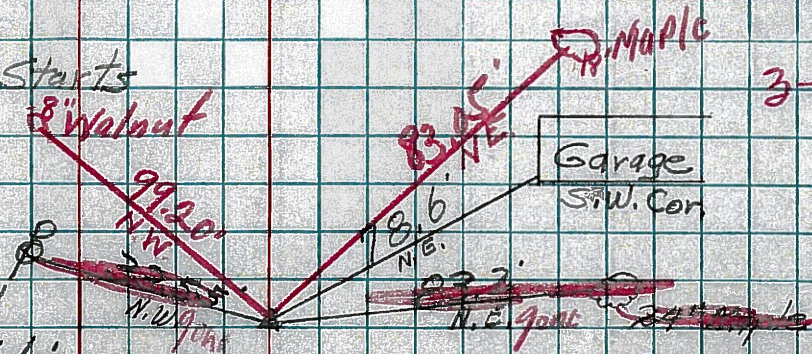


Sec. P. Ends

Sec. Z. Starts

OK
3-29 60

27 Sta. 551+69.35
R.R. Spike on $\frac{1}{2}$ of R/W
Corp. Limits Republic
292



Sec. Z. Ends