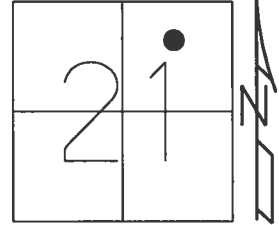


O.D.O.T. DISTRICT 2 SURVEY OFFICE (USE ONLY)

PERSONNEL _____ REFERENCE NO. 28 SHEET 24 OF 25

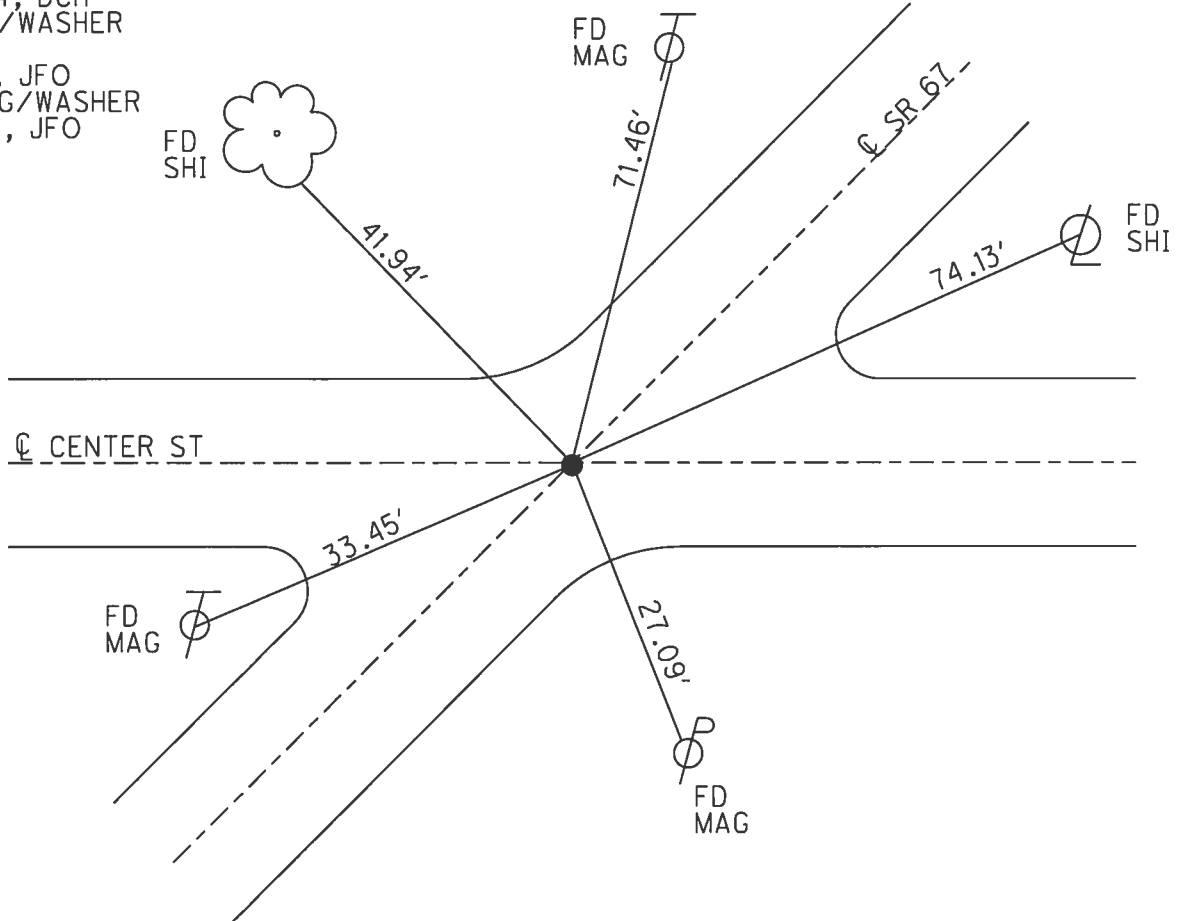
NOTES RHOADES _____ DATE 6/13/17 ROUTE SR 67
 H.C. O'DONNELL _____ WEATHER SUNNY COUNTY SENECA
 R.C. POORE _____ TEMP. 91° TOWNSHIP SCIPIO
 _____ SECTION 21
 _____ T 2 N R 16 E

TYPE MONUMENT MAG/WASHER
 ON SURFACE - ~~BELOW~~ ON _____
 LEFT - ☉ PAV'T - ~~RIGHT~~ 1.5'
 _____ TO _____ EDGE PAVEMENT
 S.L.M. 573+08.61



GRID: NORTHING: 530718.935 EASTING: 1825499.209

RECORD:
 574+19 ±
 FD MAG NAIL ATOP
 R.R.SPIKE 12" DOWN
 SET BY HANK & ASSOC.
 4/15/04, DCH
 SET MAG/WASHER
 8/18/04, DCH
 FD MAG/WASHER
 REF28
 2/5/16, JFO
 SET MAG/WASHER
 11/14/17, JFO

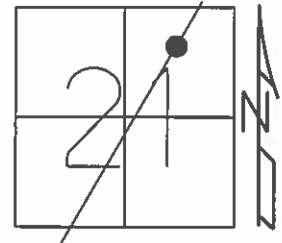


O.D.O.T. DISTRICT 2 SURVEY OFFICE (USE ONLY)

PERSONNEL _____ REFERENCE NO. 28 SHEET 2 OF 3

NOTES HOMAN _____ DATE 4/15/04 ROUTE SR 67
 H.C. NUHFER _____ WEATHER SUNNY COUNTY SENECA
 R.C. ARMS _____ TEMP. 55° TOWNSHIP SCIPIO
 _____ SECTION 21
 _____ T 2 N R 16 E

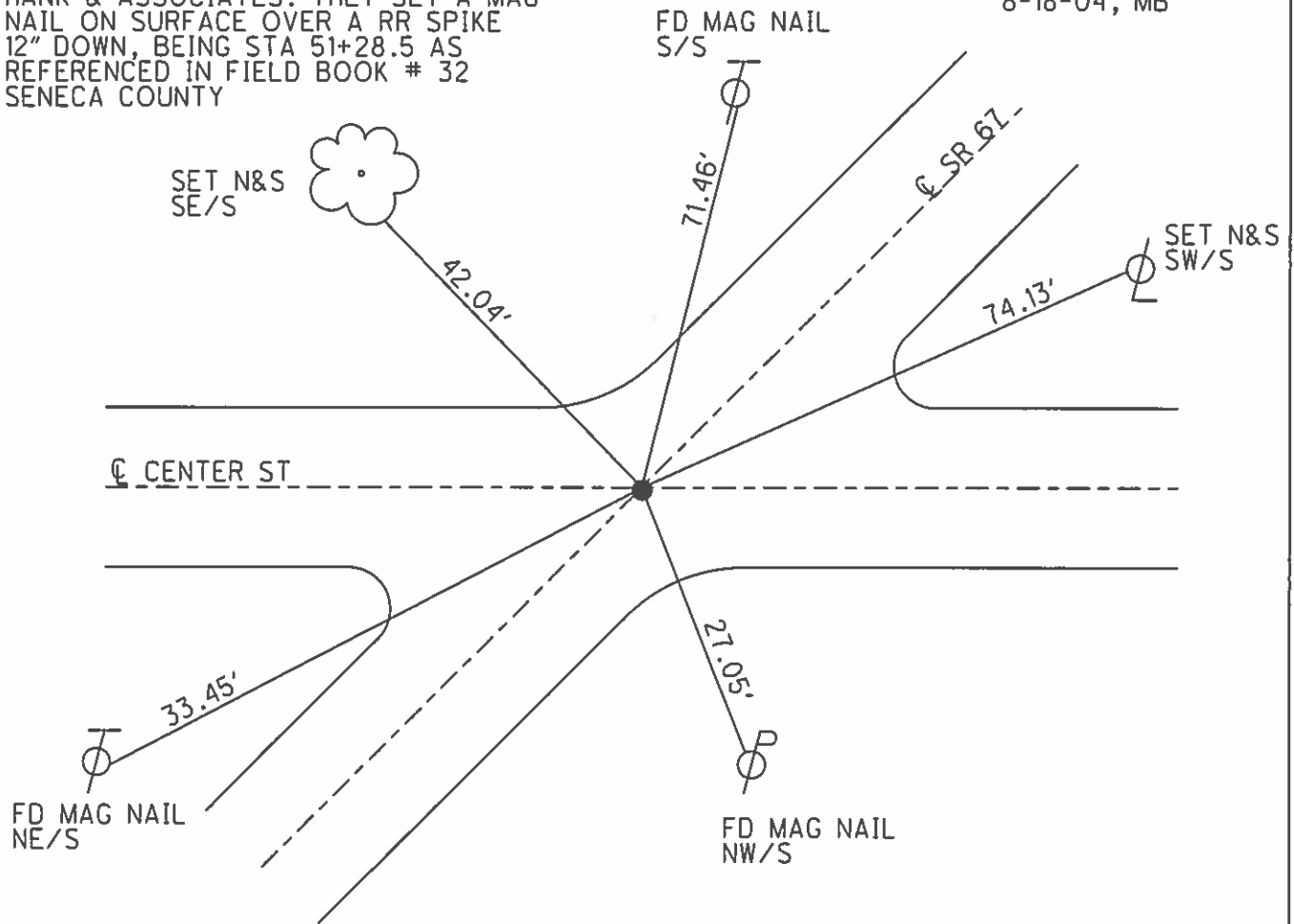
TYPE MONUMENT MAG NAIL
 ON SURFACE - ~~BELOW~~ ON _____
 LEFT - ☉ PAV'T - ~~RIGHT~~ 1.5'
 - TO - EDGE PAVEMENT
 S.L.M. 574+19



GRID: NORTHING: 530718.635 EASTING: 1852499.208

THIS CONTROL POINT WAS FOUND BY HANK & ASSOCIATES. THEY SET A MAG NAIL ON SURFACE OVER A RR SPIKE 12" DOWN, BEING STA 51+28.5 AS REFERENCED IN FIELD BOOK # 32 SENECA COUNTY

SET MAG/WASHER 8-18-04, MB



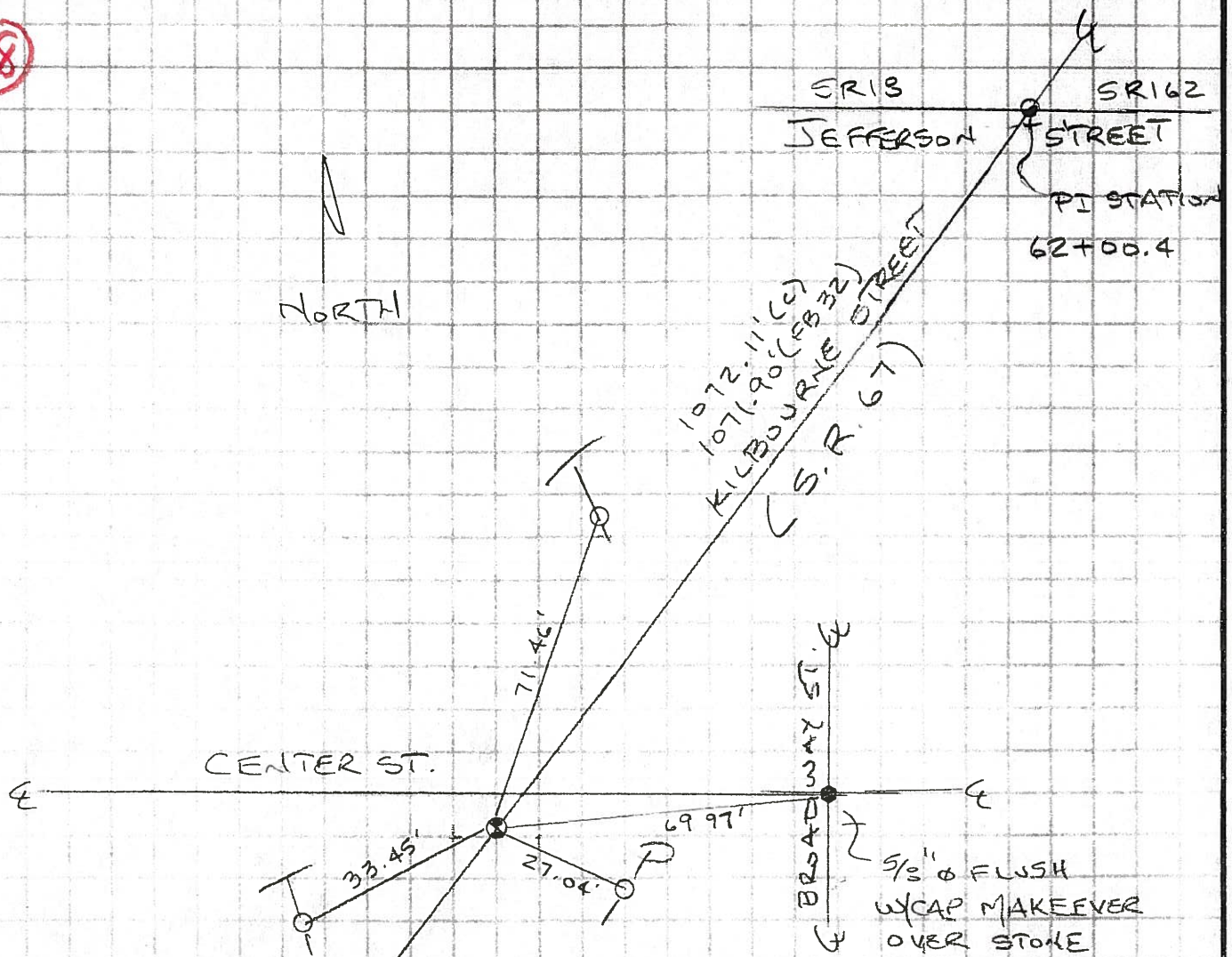
HANK AND ASSOCIATES, INC.

ENGINEERING • SURVEYING

137 South Washington St.
Tiffin, Ohio 44883
(419) 447-4300

JOB REPUBLIC BANK
SHEET NO. 1 OF 1
CALCULATED BY JGH DATE 07-01-03
CHECKED BY _____ DATE _____
SCALE NTS

28



STEVE:
 REFERENCE TO
 POINT I FOUND
 IN REPUBLIC - FOUND
 PER R/W PLANS
 YOU SENT

Jim Homan

PI. STATION 51+28.5
 FOUND RR. SPIKE DOWN 12 1/4"
 SET MINI MAG THROWOVERS
 SET 2 1/2" LONG MAG NAIL OVER RR. SPIKE
 (FOUND FROM OLD FIELD BOOK #32, SENECA FILE)

SET MAG NAILS IN POLES
 ALL MEASUREMENTS DIRECT

VILLAGE OF REPUBLIC
 SCIPIO TOWNSHIP
 SENECA CO., OHIO