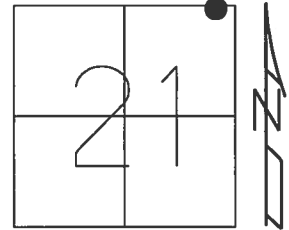


O.D.O.T. DISTRICT 2 SURVEY OFFICE (USE ONLY)

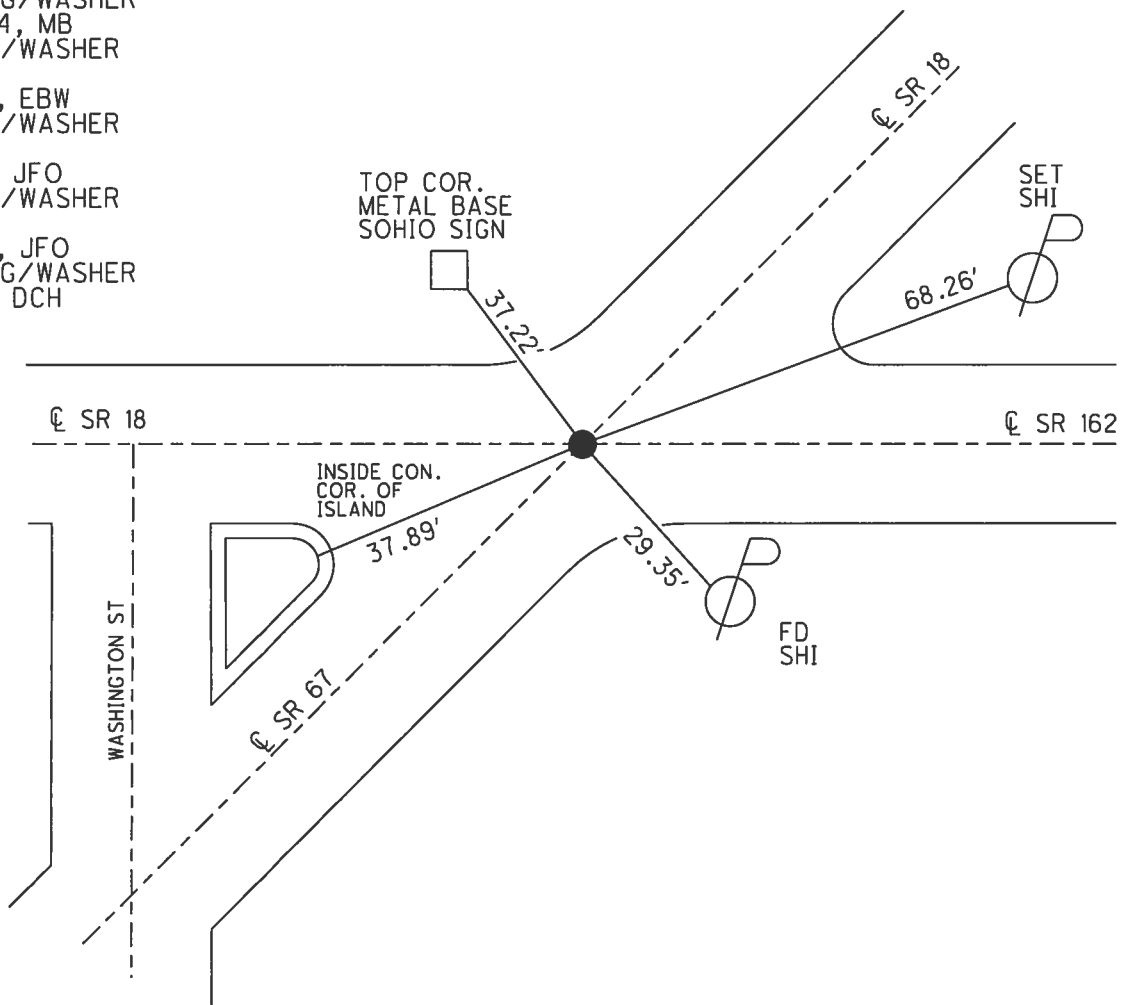
PERSONNEL	REFERENCE NO.	<u>29</u>	SHEET	<u>25</u>	OF	<u>25</u>
NOTES	<u>RHOADES</u>	DATE	<u>8/1/17</u>	ROUTE	<u>SR 67</u>	
H.C.	<u>HOMAN</u>	WEATHER	<u>SUNNY</u>	COUNTY	<u>SENECA</u>	
R.C.	<u>CARSON</u>	TEMP.	<u>70°</u>	TOWNSHIP	<u>SCIPIO</u>	
	<u>POORE</u>			SECTION	<u>16</u>	
				T	<u>2</u>	R
					<u>16</u>	<u>E</u>

TYPE MONUMENT MAG/WASHER  
 ON SURFACE - ~~BELOW~~ ON  
 LEFT - Q PAV'T - ~~RIGHT~~ 1.5'  
12' TO LT EDGE PAVEMENT  
 S.L.M. 583+80.70  
 Grid: Northing: 531607.876 Easting: 1826098.508



RECORD:  
 FD MINE SPIKE  
 3.5" DOWN ATOP  
 5/8" IPIN  
 6.5" DOWN  
 SET MAG/WASHER  
 8/18/04, MB  
 FD MAG/WASHER  
 REF71  
 5/7/14, EBW  
 FD MAG/WASHER  
 REF1  
 1/8/16, JFO  
 FD MAG/WASHER  
 REF29  
 2/5/16, JFO  
 SET MAG/WASHER  
 8/1/17, DCH

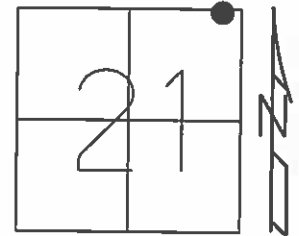
NOTE:  
 SR 18=REF 71  
 SR 162=REF 1



O.D.O.T. DISTRICT 2 SURVEY OFFICE (USE ONLY)

PERSONNEL \_\_\_\_\_ REFERENCE NO. 29 SHEET 3 OF 3  
 NOTES RHOADES DATE 7-8-15 ROUTE SR 67  
 H.C. O'DONNELL WEATHER SUNNY COUNTY SENECA  
 R.C. HOMAN TEMP. 61°F TOWNSHIP SCIPIO  
 \_\_\_\_\_ SECTION 16  
 \_\_\_\_\_ T 2 N R 16 E

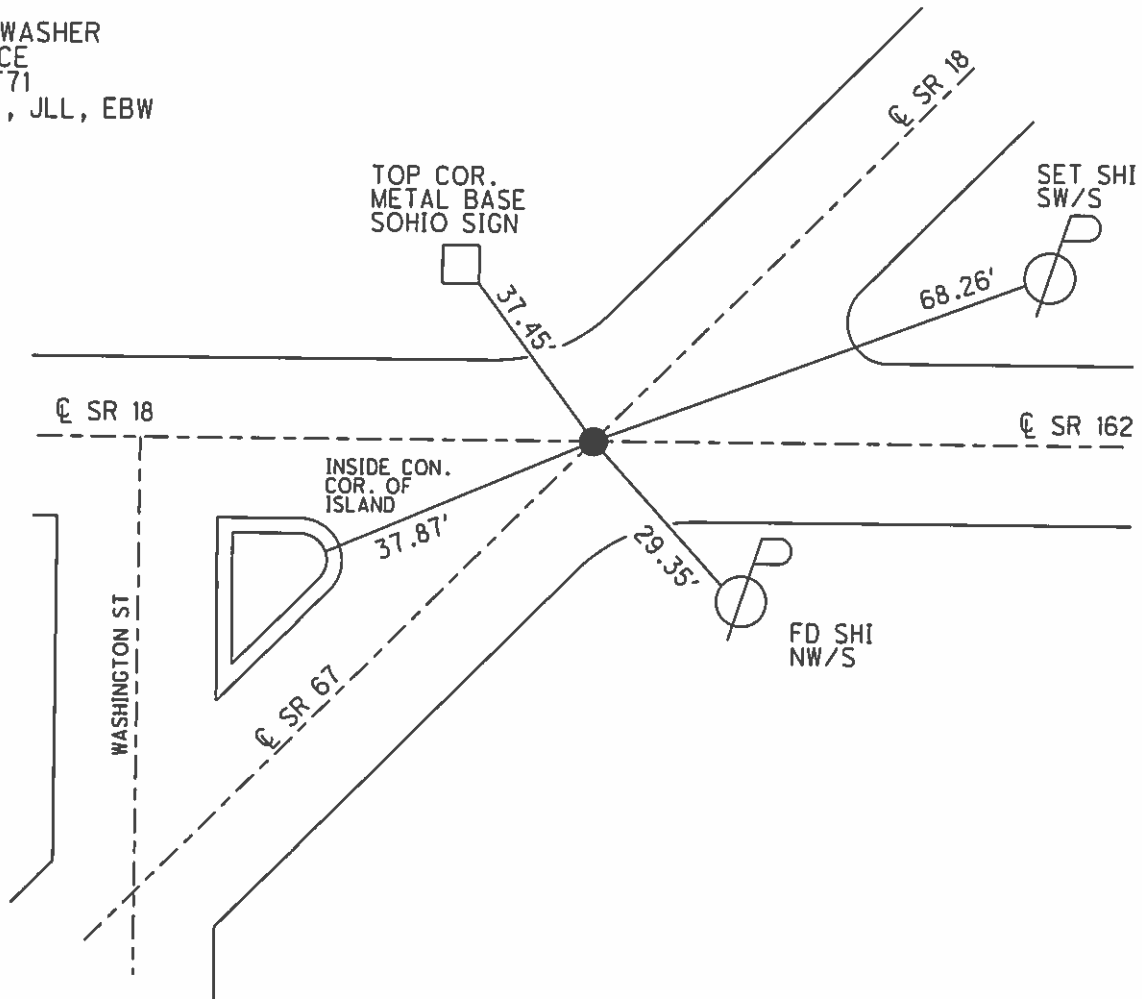
TYPE MONUMENT MAG/WASHER  
 ON SURFACE - ~~BELOW~~ ON \_\_\_\_\_  
 LEFT - ☉ PAV'T - ~~RIGHT~~ 1.5'  
12' TO LT EDGE PAVEMENT  
 S.L.M. 584+84  
 Grid: Northing: 531607.8899 Easting: 1826098.4816



RECORD:  
 FD MINE SPIKE 3.5" BELOW  
 ATOP 5/8" IRON PIN 6.5" BELOW

NOTE:  
 SR 18=REF 71  
 SR 67=REF 29

SET MAG/WASHER  
 8-18-04, MB  
 FD MAG/WASHER  
 @ SURFACE  
 GPS, REF 71  
 05-07-14, JLL, EBW

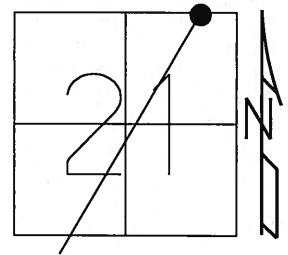


O.D.O.T. DISTRICT 2 SURVEY OFFICE (USE ONLY)

PERSONNEL \_\_\_\_\_ REFERENCE NO. 29 SHEET 3 OF 3

NOTES HOMAN DATE 4/15/04 ROUTE SR 67  
 H.C. NUHFER WEATHER SUNNY COUNTY SENECA  
 R.C. ARMS TEMP. 55° TOWNSHIP SCIPIO  
 \_\_\_\_\_ SECTION 21  
 \_\_\_\_\_ T 2 N R 16 E

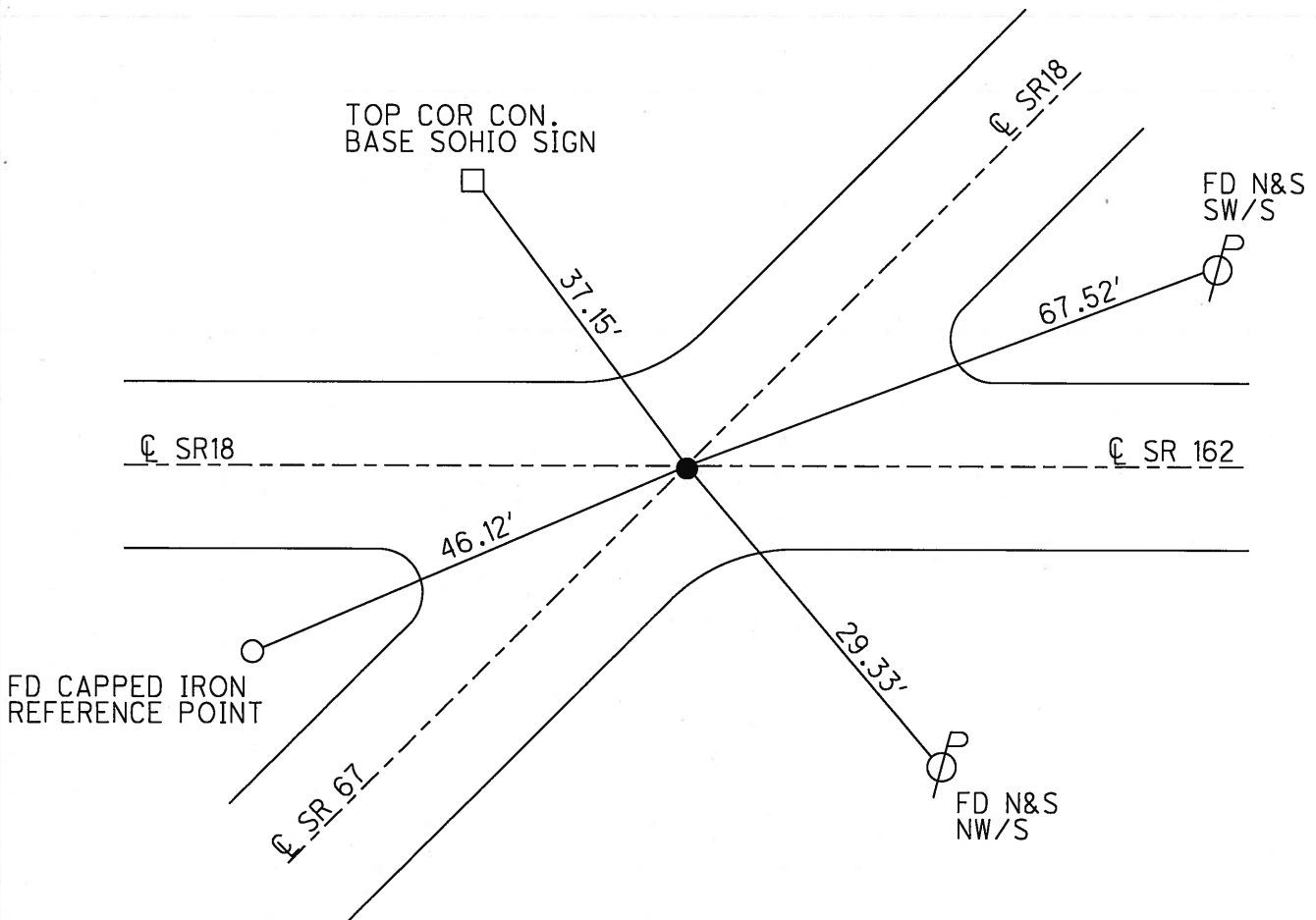
TYPE MONUMENT MINE SPIKE  
~~ON SURFACE~~ - BELOW 3"  
 LEFT - ☉ PAV'T - ~~RIGHT~~ 1.5'  
 - TO - EDGE PAVEMENT  
 S.L.M. 584+84



GRID: NORTHING: 531607.897 EASTING: 1826098.489

FD MINE SPIKE 3 " DOWN OVER A  
 IRON PIN 6 " DOWN

SET MAG NAIL  
 & WASHER  
 8-18-04, MB



# O.D.O.T. DISTRICT 2 SURVEY OFFICE

PERSONNEL \_\_\_\_\_

REFERENCE NO. 71

SHEET 23 OF 24

NOTES CHENEY

H.C. RIPPLE

R.C. BARBOUR

GEYMAN

DATE 7-2-1993

WEATHER CLOUDY

TEMP. 85°

ROUTE #18

COUNTY SENECA

TOWNSHIP SCIPIO

SECTION 16 & 21

T2N R16 E

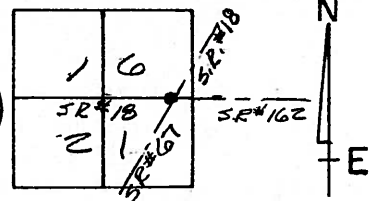
TYPE MONUMENT PK/WASHER

ON SURFACE - ~~BELOW~~ ON

~~LEFT~~ - RIGHT - ON E. ALL S.R.'S (EXCEPT 2' S. OF E. S.R. #162)

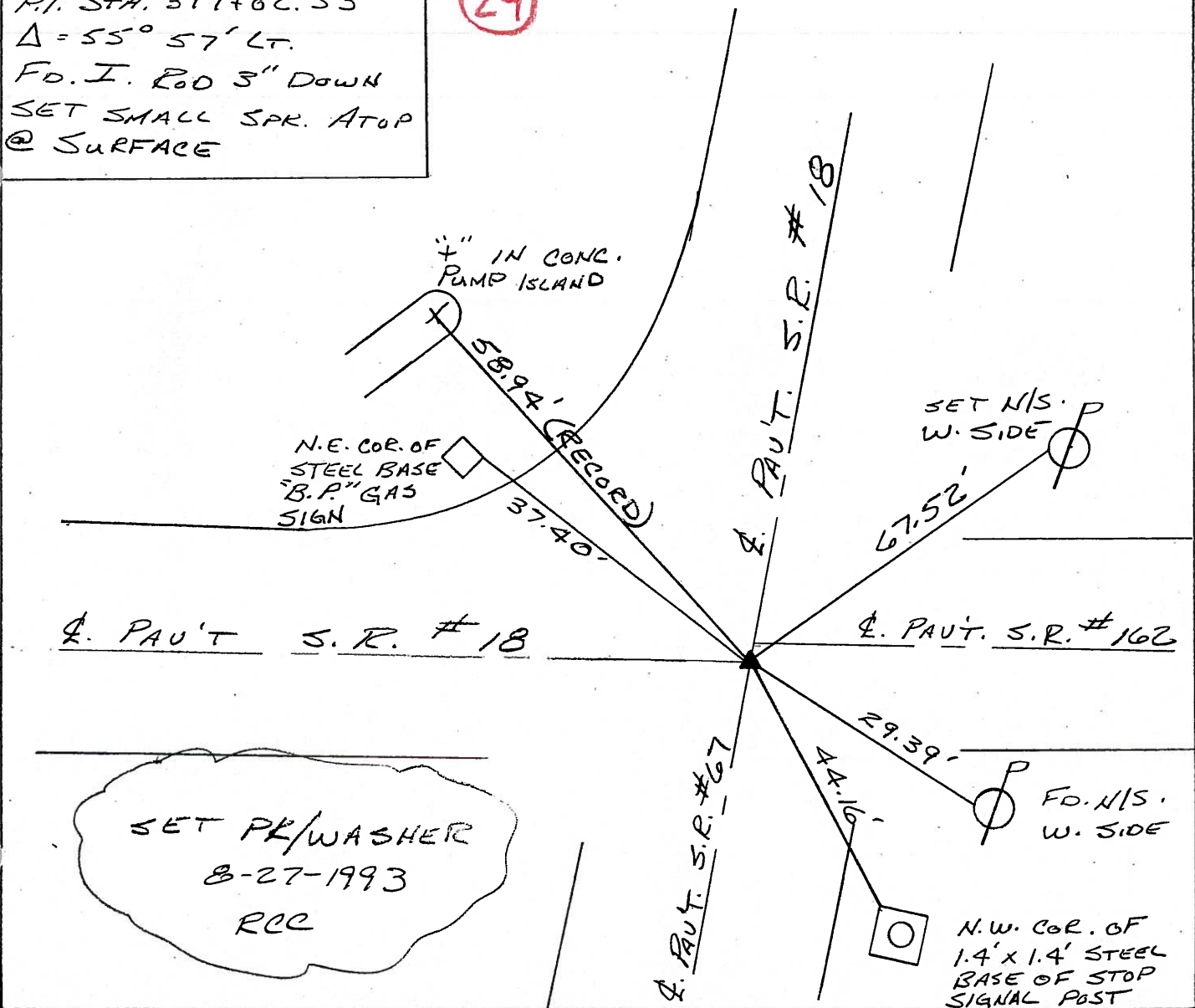
TO EDGE PAVEMENT

S.L.M. 1211+75



RECORD: 6-15-1971  
 P.I. STA. 397+02.33  
 $\Delta = 55^\circ 57' \text{ Lt.}$   
 Fd. I. Rod 3" Down  
 SET SMALL SPK. ATOP  
 @ SURFACE

29



SET PK/WASHER  
 8-27-1993  
 RCC