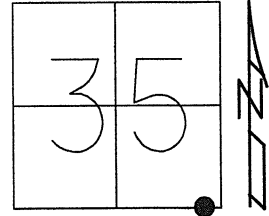


O.D.O.T. DISTRICT 2 SURVEY OFFICE (USE ONLY)

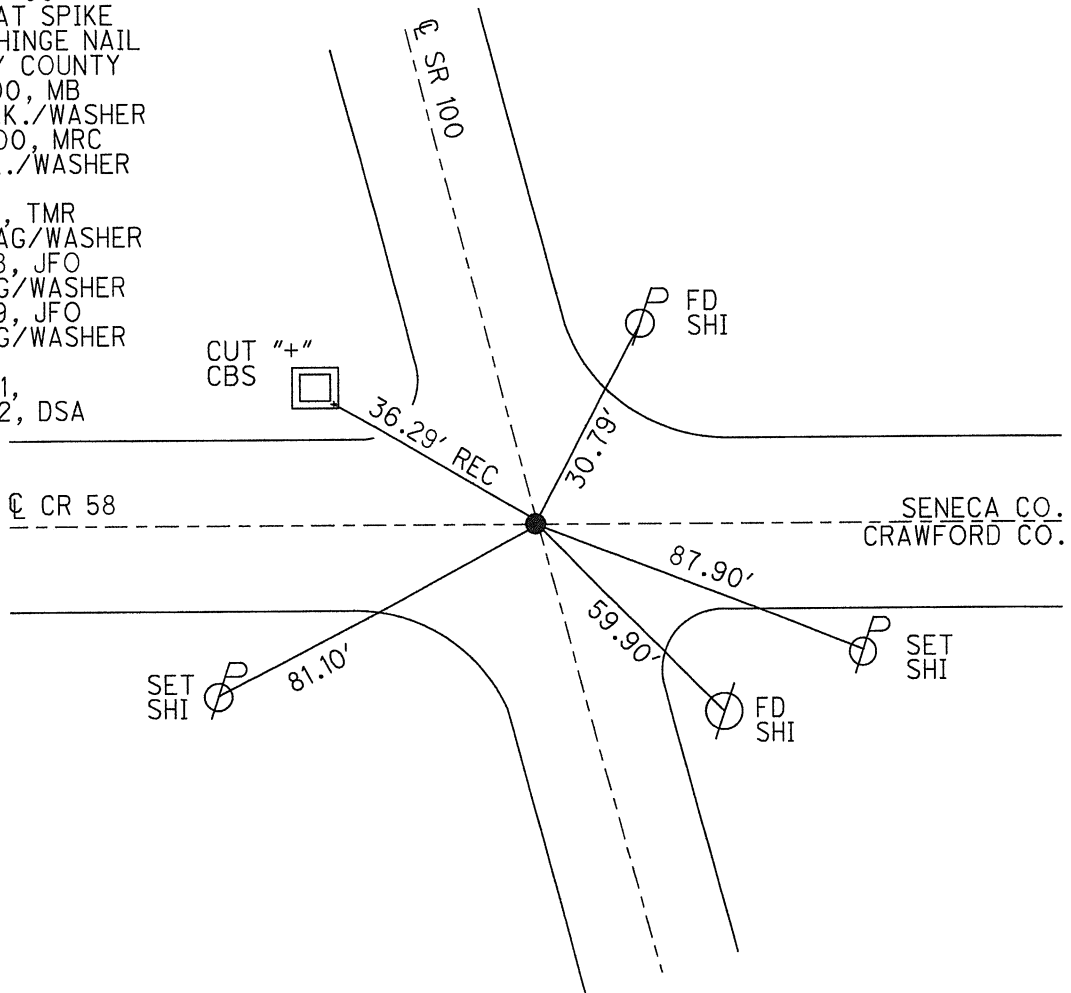
PERSONNEL _____ REFERENCE NO. 1 SHEET 1 OF 46
 NOTES NIESE DATE 7/13/21 ROUTE SR 100
 H.C. AUBLE WEATHER CLOUDY COUNTY SENECA
 R.C. NIESE TEMP. 72° TOWNSHIP EDEN
 DWG BY WHITAKER PID 95778 SECTION 35
 T 1 N R 15 E

TYPE MONUMENT MAG/WASHER
 ON SURFACE - ~~BELOW~~ ON
 OFFSET 0.5' TO EDGE PAVEMENT
 STATION: 0+00



HORZ. DATUM: NAD83 (2011) GEOID: 2012A
 GRID: NORTHING: 483969.671 EASTING: 1804351.248

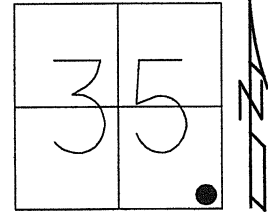
RECORD:
 STA. 0+00
 FD BOAT SPIKE
 ATOP HINGE NAIL
 SET BY COUNTY
 7/21/00, MB
 SET P.K./WASHER
 10-17-00, MRC
 FD P.K./WASHER
 REF 1
 1-15-14, TMR
 SET MAG/WASHER
 5-31-18, JFO
 FD MAG/WASHER
 8-19-19, JFO
 FD MAG/WASHER
 REF 1
 7-13-21,
 6/8/22, DSA



O.D.O.T. DISTRICT 2 SURVEY OFFICE (USE ONLY)

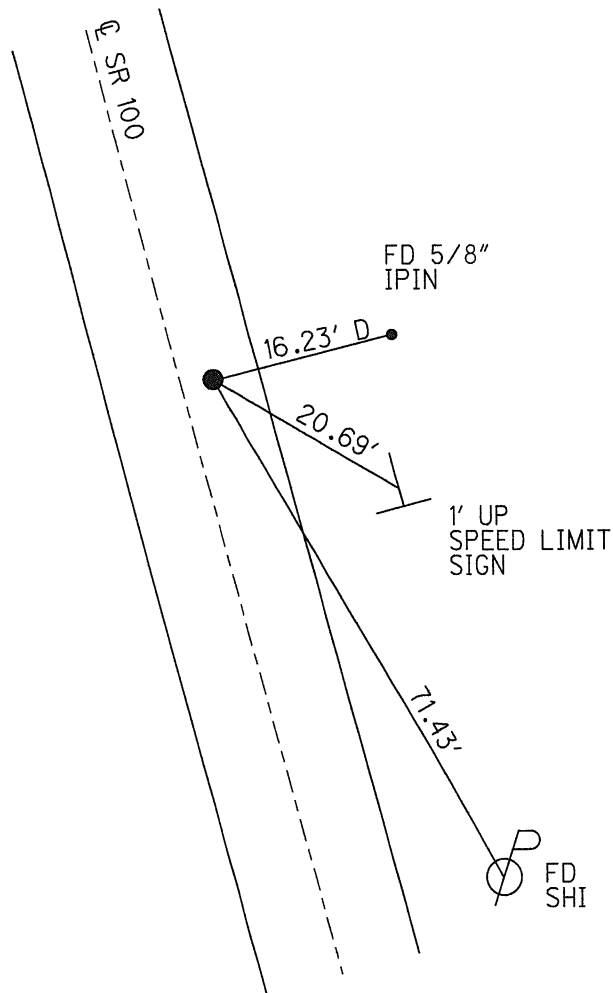
PERSONNEL _____ REFERENCE NO. 2 SHEET 2 OF 46
 NOTES RHOADES DATE 6/17/22 ROUTE SR 100
 H.C. AUBLE WEATHER SUNNY COUNTY SENECA
 R.C. WHITAKER TEMP. 82° TOWNSHIP EDEN
 NIESE SECTION 35
 DWG BY WHITAKER PID 95778 T 1 N R 15 E

TYPE MONUMENT MAG/WASHER
 ON SURFACE - ~~BELOW~~ ON
 OFFSET Q PAVEMENT 5.1' ~~LF~~ : RT
4.9' TO RT EDGE PAVEMENT
 STATION: 5+45.83



HORZ.DATUM: NAD83(2011) GEOID: 2012A
 GRID: NORTHING: 484460.861 EASTING: 1804113.199

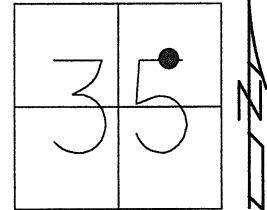
RECORD: P.I.
 $\Delta = 0^\circ 43' 50''$ LT
 STA. 5+49.92
 P.K./WASHER
 ATOP R.R. SPIKE
 ATOP LIMESTONE
 16" BELOW
 FD P.K./WASHER
 7/21/00, MB
 SET P.K./WASHER
 10-17-00, MRC
 FD P.K./WASHER
 REF2
 1-15-14, TMR
 FD P.K./WASHER
 5-31-18
 8-19-19, JFO
 SET MAG/WASHER
 NEWREF2
 6/17/22, DSA



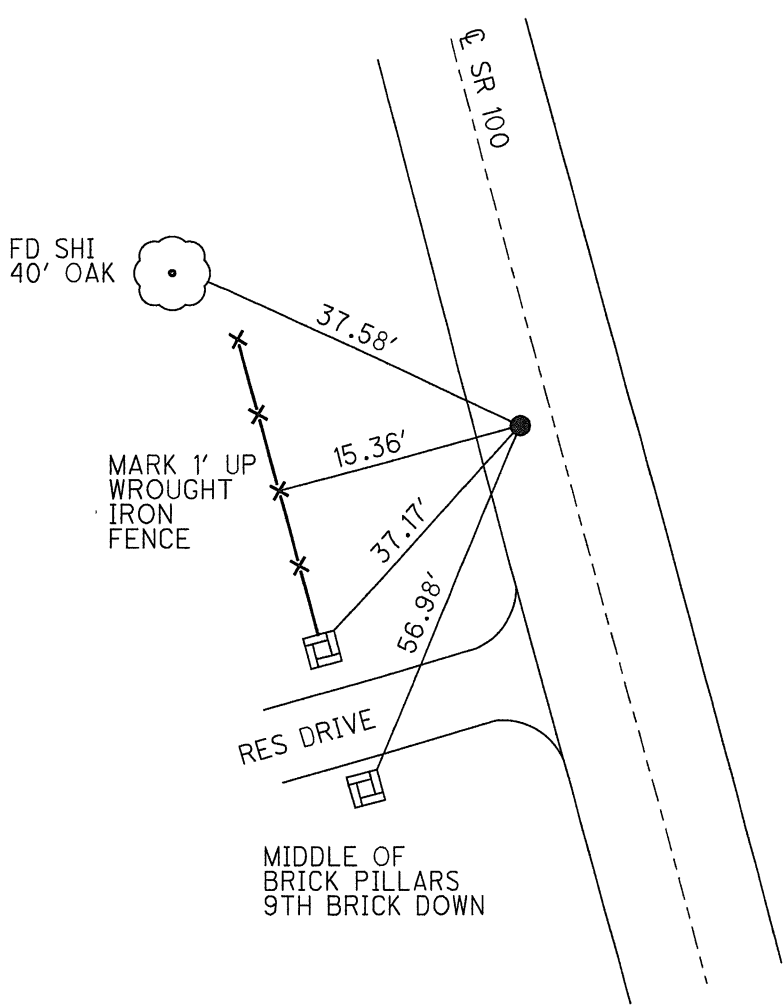
O.D.O.T. DISTRICT 2 SURVEY OFFICE (USE ONLY)

PERSONNEL _____ REFERENCE NO. 3 SHEET 3 OF 46
 NOTES RHOADES DATE 6/17/22 ROUTE SR 100
 H.C. AUBLE WEATHER SUNNY COUNTY SENECA
 R.C. WHITAKER TEMP. 82° TOWNSHIP EDEN
 NIESE SECTION 35
 DWG BY WHITAKER PID 95778 T 1 N R 15 E

TYPE MONUMENT MAG/WASHER
 ON SURFACE - ~~BELOW~~ ON
 OFFSET CL PAVEMENT 5.3' LT : ~~R~~
4.6' TO LT EDGE PAVEMENT
 STATION: 32+87.70



HORZ.DATUM: NAD83(2011) GEOID: 2012A
 GRID: NORTHING: 486913.246 EASTING: 1802886.975



RECORD: P.O.T.
 STA. 32+87.97
 FD P.K./WASHER
 ATOP P.K./WASHER
 ATOP BOAT SPIKE/WASHER
 2" BELOW
 FD P.K./WASHER
 7/21/00, MB
 SET P.K./WASHER
 10-17-00, MRC
 FD P.K./WASHER
 REF3
 1-15-14, TMR
 FD P.K./WASHER
 5-31-18
 8-19-19, JFO
 SET MAG/WASHER
 NEWREF3
 6/17/22, DSA

O.D.O.T. DISTRICT 2 SURVEY OFFICE (USE ONLY)

PERSONNEL

REFERENCE NO. 4

SHEET 4 OF 46

NOTES RHOADES

DATE 6/17/22

ROUTE SR 100

H.C. AUBLE

WEATHER SUNNY

COUNTY SENECA

R.C. WHITAKER

TEMP. 82°

TOWNSHIP EDEN

NIESE

DWG BY WHITAKER

PID 95778

SECTION 26

T 1 N R 15 E

TYPE MONUMENT MAG/WASHER

ON SURFACE - ~~BELOW~~ ON

OFFSET 0.2' LT : ~~RT~~

9.3' TO LT EDGE PAVEMENT

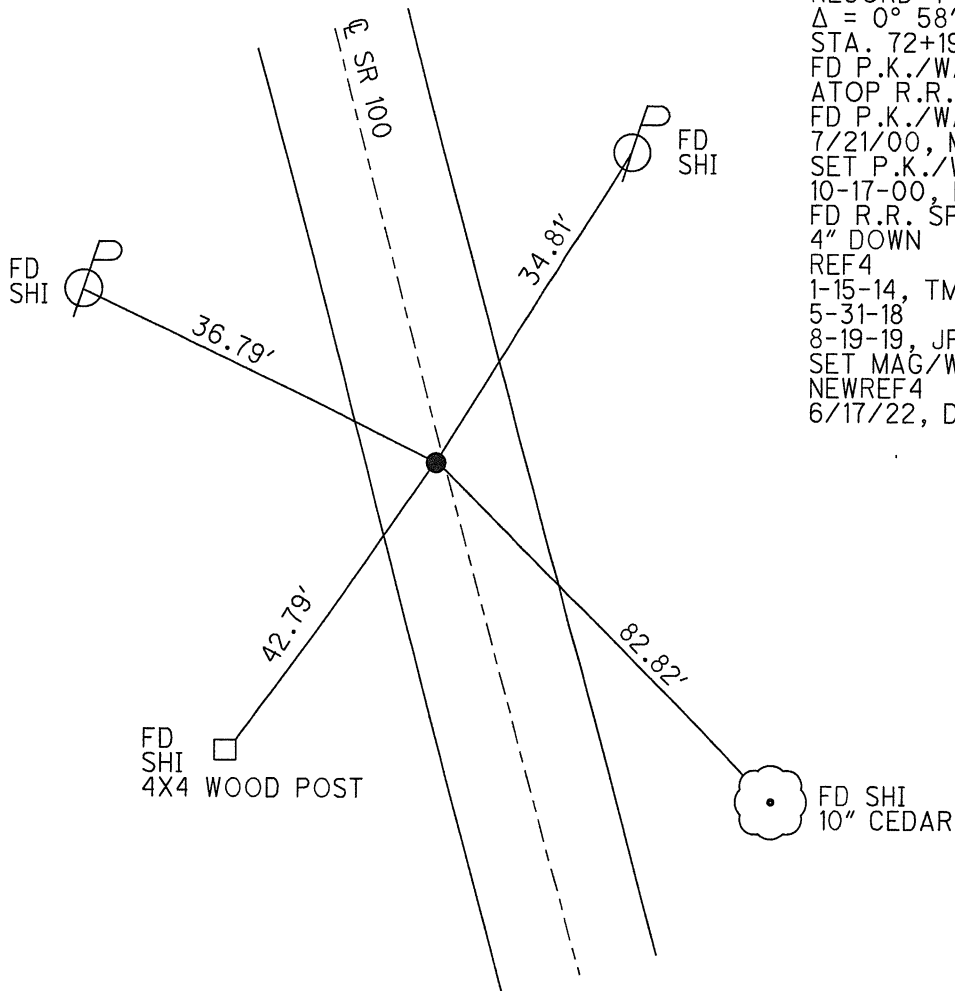
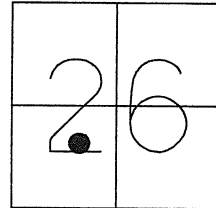
STATION: 72+18.73

HORIZ.DATUM: NAD(2011)

GEOID: 2012A

GRID: NORTHING: 490429.055

EASTING: 1801128.538

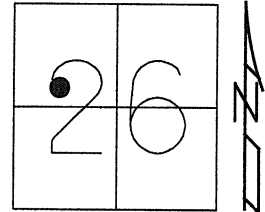


RECORD: P.I.
 $\Delta = 0^\circ 58' RT$
 STA. 72+19.12
 FD P.K./WASHER
 ATOP R.R. SPIKE
 FD P.K./WASHER
 7/21/00, MB
 SET P.K./WASHER
 10-17-00, MRC
 FD R.R. SPIKE
 4" DOWN
 REF4
 1-15-14, TMR
 5-31-18
 8-19-19, JFO
 SET MAG/WASHER
 NEWREF4
 6/17/22, DSA

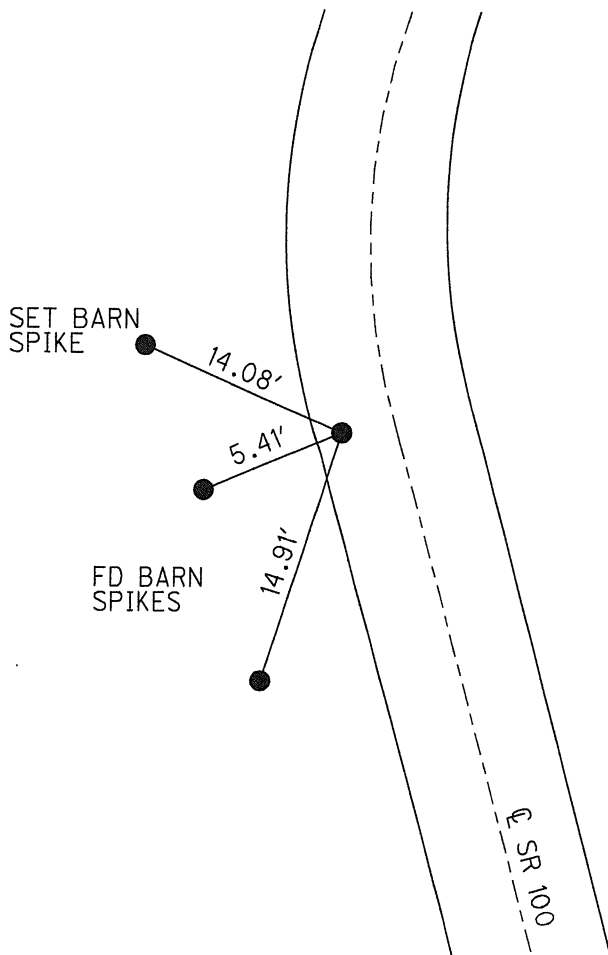
O.D.O.T. DISTRICT 2 SURVEY OFFICE (USE ONLY)

PERSONNEL _____ REFERENCE NO. 5 SHEET 5 OF 46
 NOTES RHOADES DATE 6/17/22 ROUTE SR 100
 H.C. AUBLE WEATHER SUNNY COUNTY SENECA
 R.C. WHITAKER TEMP. 84° TOWNSHIP EDEN
 NIESE SECTION 26
 DWG BY WHITAKER PID 95778 T 1 N R 15 E

TYPE MONUMENT MAG/WASHER
 ON SURFACE - ~~BELOW~~ ON _____
 OFFSET ϕ PAVEMENT 8.8' LT : ~~RT~~
0.9' TO LT EDGE PAVEMENT
 STATION: 85+80.27



HORZ.DATUM: NAD83(2011) GEOID: 2012A
 GRID: NORTHING: 491656.809 EASTING: 1800539.981

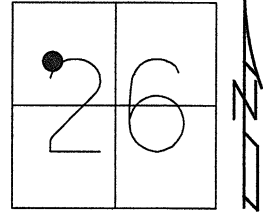


RECORD: P.I.
 $\Delta = 14^\circ 30' RT$
 STA. 85+80.45
 P.K.SHANK
 ATOP P.K./WASHER
 ATOP R.R.SPIKE
 FD P.K.SHANK
 7/21/00, MB
 SET P.K./WASHER
 10-17-00, MRC
 FD P.K./WASHER
 REF5
 1-15-14, TMR
 FD P.K./WASHER
 5-31-18
 8-19-19, JFO
 SET MAG/WASHER
 NEWREF5
 6/17/22, DSA

O.D.O.T. DISTRICT 2 SURVEY OFFICE (USE ONLY)

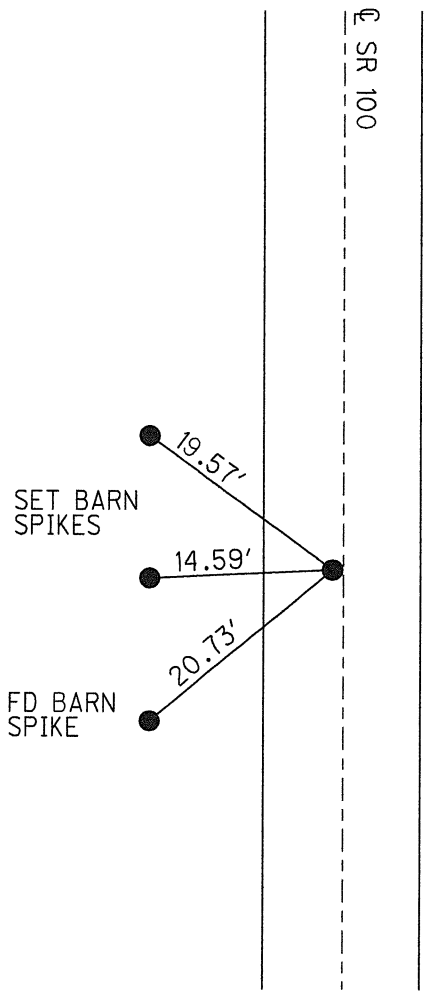
PERSONNEL _____ REFERENCE NO. 6 SHEET 6 OF 46
 NOTES RHOADES DATE 6/17/22 ROUTE SR 100
 H.C. AUBLE WEATHER SUNNY COUNTY SENECA
 R.C. WHITAKER TEMP. 84° TOWNSHIP EDEN
 NIESE SECTION 26
 DWG BY WHITAKER PID 95778 T 1 N R 15 E

TYPE MONUMENT MAG/WASHER
 ON SURFACE - ~~BELOW~~ ON
 OFFSET 0.2' ~~LT~~ : RT
9.6' TO RT EDGE PAVEMENT
 STATION: 95+91.32



HORZ. DATUM: NAD83(2011) GEOID: 2012A
 GRID: NORTHING: 492747.075 EASTING: 1800325.855

RECORD: P.O.T.
 STA. 96+91.57
 FD P.K./WASHER
 ATOP P.K./WASHER
 ATOP BOAT SPIKE
 FD P.K./WASHER
 7/21/00, MB
 SET P.K./WASHER
 10-17-00, MRC
 FD P.K./WASHER
 REF6
 1-15-14, TMR
 FD P.K./WASHER
 2" DOWN
 REF6
 5-31-18
 8-19-19, JFO
 SET MAG/WASHER
 NEWREF6
 6/17/22, DSA



O.D.O.T. DISTRICT 2 SURVEY OFFICE (USE ONLY)

PERSONNEL

REFERENCE NO. 7

SHEET 7 OF 46

NOTES HAGEMEGER

DATE 5/31/18

ROUTE SR 100

H.C. O'DONNELL

WEATHER SUNNY

COUNTY SENECA

R.C. TRENKA

TEMP. 80°

TOWNSHIP EDEN

SECTION 26

DWG BY MILLER

PID 93677

T 1 N R 15 E

TYPE MONUMENT I. BOLT/NUT

~~ON SURFACE~~ - BELOW 2"

OFFSET 14.8' C PAVEMENT 25.1 LT : ~~RT~~

14.8' TO LT EDGE PAVEMENT

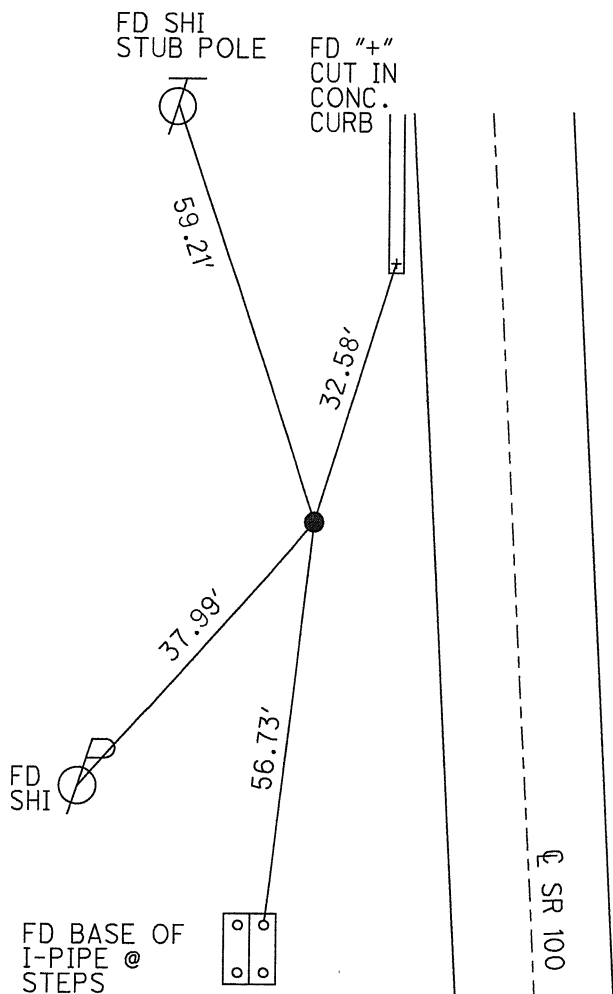
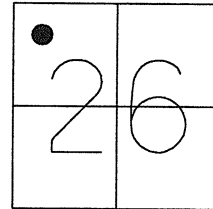
STATION: 106+44.07

HORZ.DATUM: NAD83(2011)

GEOID: OHIO NORTH

GRID: NORTHING: 493682.679

EASTING: 1800141.957



RECORD: P.I.
 STA. 106+45
 SET I.BOLT
 1951 PLANS
 FD I.BOLT
 1" DOWN
 10-17-00, MRC
 FD I.BOLT/NUT
 2" DOWN
 REF7
 1-15-14, TMR
 5-31-18, JFO

O.D.O.T. DISTRICT 2 SURVEY OFFICE (USE ONLY)

PERSONNEL

REFERENCE NO. 8

SHEET 8 OF 46

NOTES RHOADES

DATE 6/17/22

ROUTE SR 100

H.C. AUBLE

WEATHER SUNNY

COUNTY SENECA

R.C. WHITAKER

TEMP. 84°

TOWNSHIP EDEN

NIESE

SECTION 26

DWG BY WHITAKER

PID 95778

T 1 N R 15 E

TYPE MONUMENT MAG/WASHER

ON SURFACE - ~~BELOW~~ ON

OFFSET \bar{C} PAVEMENT ON LT : RT

- TO - EDGE PAVEMENT

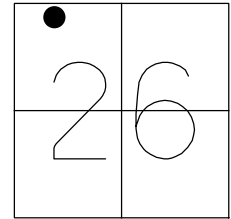
STATION: 107+43.26

HORZ.DATUM: NAD83(2011)

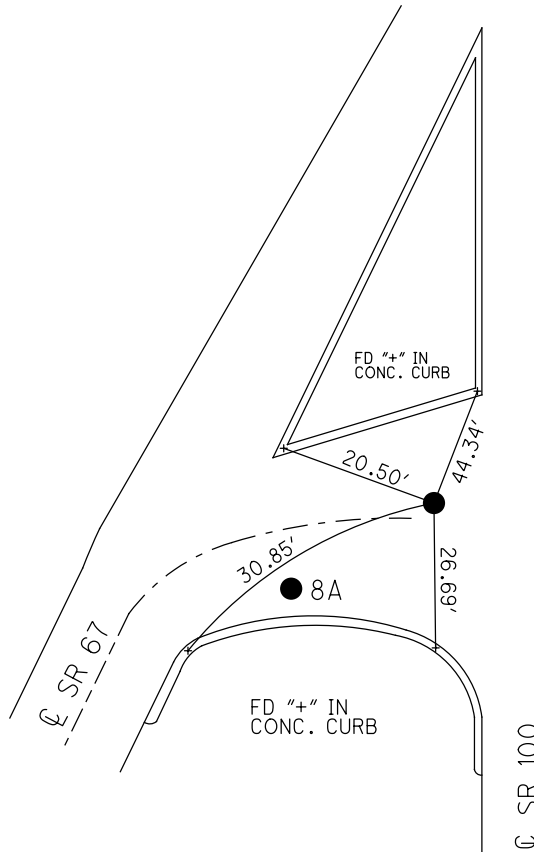
GEOID: 2012A

GRID: NORTHING: 493779.252

EASTING: 1800129.572



RECORD: P.I.
 $\Delta = 26^\circ 10' \text{ LT}$
 \bar{C} SURVEY
 STA: 107+43.41
 FD P.K./WASHER
 5/3/94, CL
 SET P.K./WASHER
 9/26/94, CL
 FD P.K.SHANK
 REF8
 2/19/14, TMR
 SET MAG/WASHER
 NEWREF8
 7/13/15, JFO
 FD MAG/WASHER
 REF8
 2/4/16, JFO
 SET MAG/WASHER
 NEWREF8
 6/17/22, DSA



DIST. 8-8A = 16.10'

O.D.O.T. DISTRICT 2 SURVEY OFFICE (USE ONLY)

PERSONNEL

REFERENCE NO. 8A

SHEET 9 OF 46

NOTES RHOADES

DATE 6/17/22

ROUTE SR 100

H.C. AUBLE

WEATHER SUNNY

COUNTY SENECA

R.C. WHITAKER

TEMP. 84°

TOWNSHIP EDEN

NIESE

DWG BY WHITAKER

PID 95778

SECTION 26

T 1 N R 15 E

TYPE MONUMENT MAG/WASHER

ON SURFACE - ~~BELOW~~ ON

OFFSET ϕ PAVEMENT ON LT : RT

8' TO RT EDGE PAVEMENT

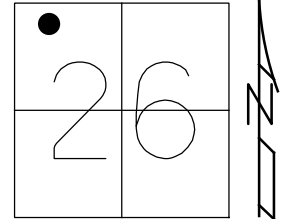
STATION: 107+27.22

HORZ.DATUM: NAD83(2011)

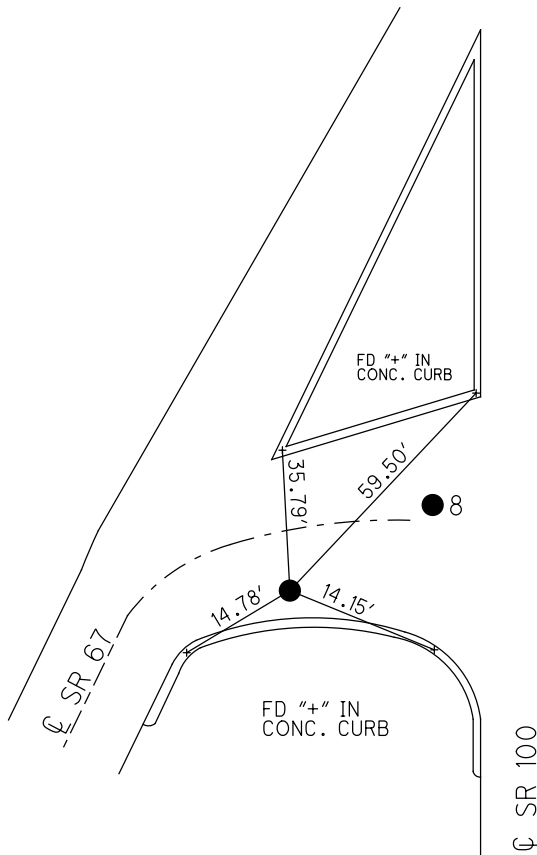
GEOID: 2012A

GRID: NORTHING: 493763.530

EASTING: 1800126.305



RECORD: P.I.
 $\Delta = 23^\circ 32' RT$
 1951 PLANS, ϕ SURVEY
 STA: 107+27.41
 FD R.R.SPIKE
 5/3/94, CL
 SET R.R.SPIKE
 9/26/94, CL
 FD R.R.SPIKE
 REFA8
 2/19/14, TMR
 SET MAG/WASHER
 NEWREFA8
 7/13/15, JFO
 FD MAG/WASHER
 REFA8
 2/4/16, JFO
 SET MAG/WASHER
 NEWREFA8
 6/17/22, DSA



DIST. 8-8A = 16.10'

O.D.O.T. DISTRICT 2 SURVEY OFFICE (USE ONLY)

PERSONNEL

REFERENCE NO. 9

SHEET 10 OF 46

NOTES RHOADES
 H.C. O'DONNELL
 R.C. RHOADES

DATE 7/12/17
 WEATHER CLOUDY
 TEMP. 78°

ROUTE SR 100
 COUNTY SENECA
 TOWNSHIP EDEN
 SECTION 23
 T 1 N R 15 E

DWG BY MILLER PID 107060

TYPE MONUMENT MAG/WASHER

ON SURFACE - ~~BELOW~~ ON

OFFSET \varnothing PAVEMENT ON LT : RT

- TO - EDGE PAVEMENT

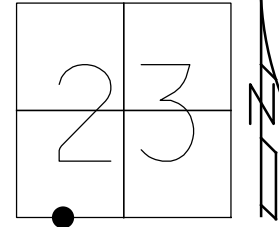
STATION: 115+62.17

HORZ.DATUM: NAD83(2011)

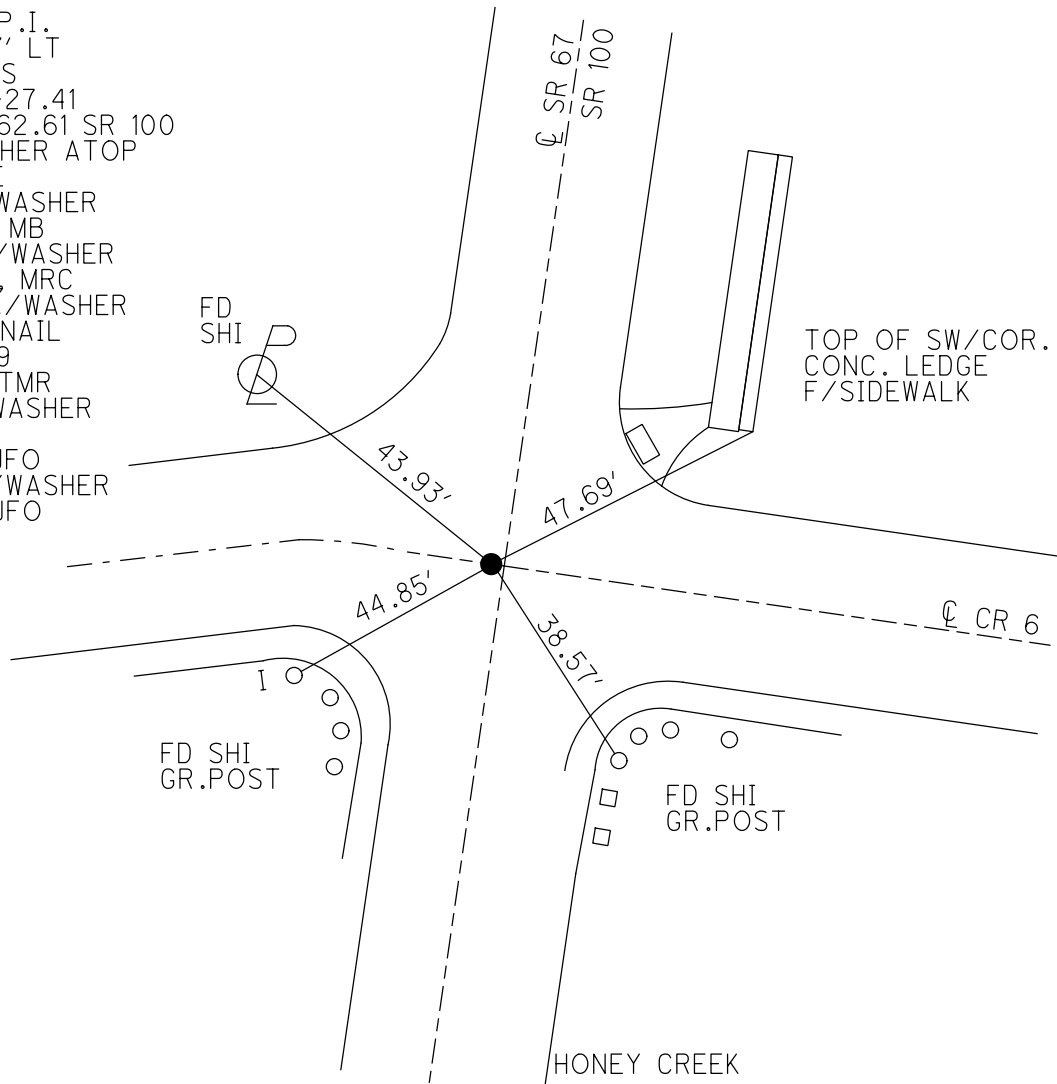
GEOID: GEOID 12A

GRID: NORTHING: 494582.057

EASTING: 1800291.155



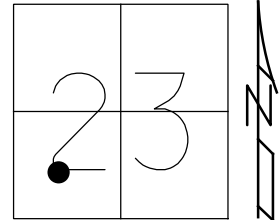
RECORD: P.I.
 $\Delta = 01^\circ 57' \text{ LT}$
 1951 PLANS
 STA: 107+27.41
 STA: 115+62.61 SR 100
 P.K./WASHER ATOP
 R.R.SPIKE
 FD P.K./WASHER
 7/21/00, MB
 SET P.K./WASHER
 10/17/00, MRC
 DNF, P.K./WASHER
 SET MAG NAIL
 GPS, REF9
 2/21/14, TMR
 FD MAG/WASHER
 REF9
 2/4/16, JFO
 SET MAG/WASHER
 11/9/17, JFO



O.D.O.T. DISTRICT 2 SURVEY OFFICE (USE ONLY)

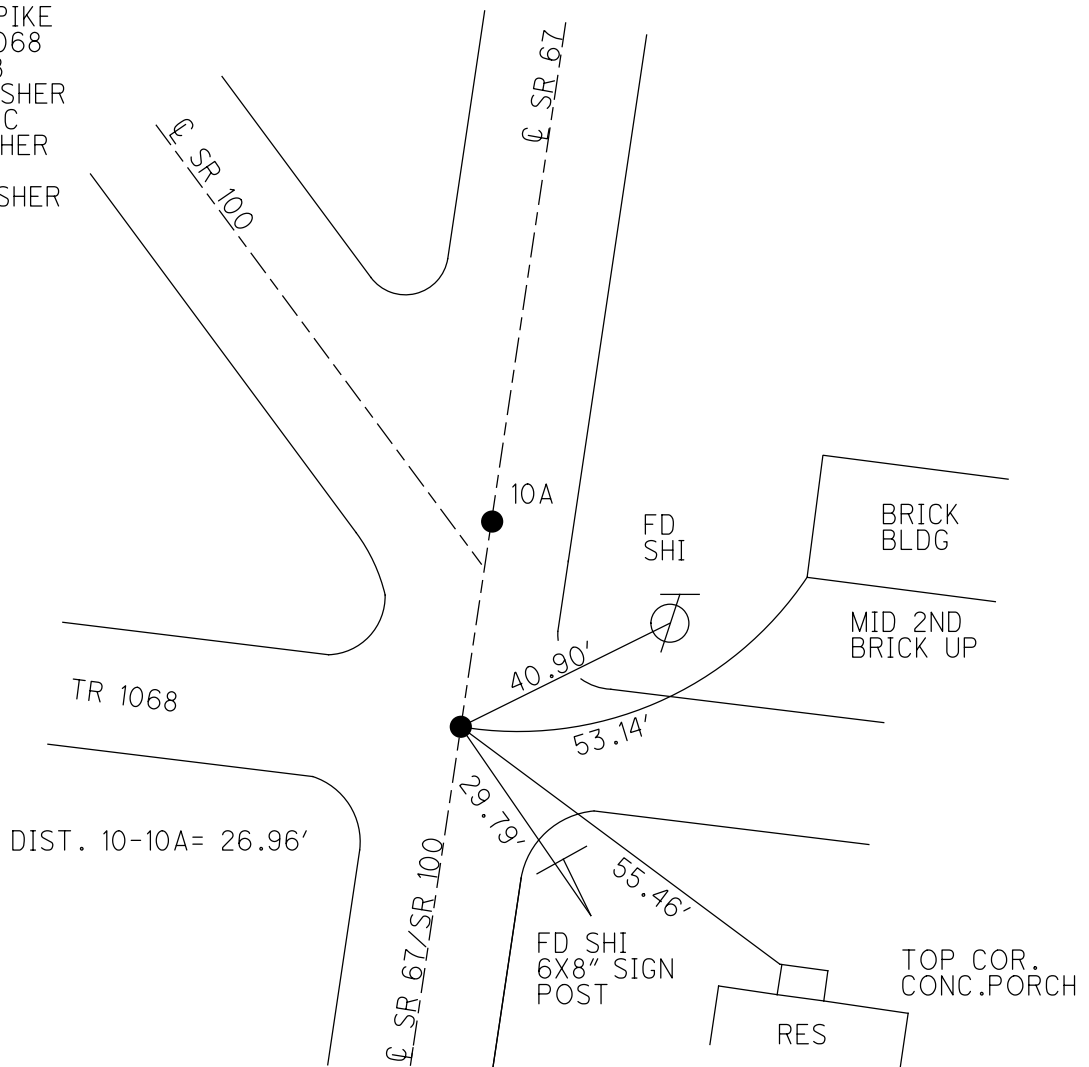
PERSONNEL _____ REFERENCE NO. 10 SHEET 11 OF 46
 NOTES RHOADES DATE 5/31/18 ROUTE SR 100
 H.C. O'DONNELL WEATHER SUNNY COUNTY SENECA
 R.C. RHOADES TEMP. 80° TOWNSHIP EDEN
 DWG BY MILLER PID 107060 SECTION 23
 T 1 N R 15 E

TYPE MONUMENT MAG/WASHER
 ON SURFACE - ~~BELOW~~ ON
 OFFSET \varnothing PAVEMENT ON LT : RT
- TO - EDGE PAVEMENT
 STATION: 119+54.82



HORZ.DATUM: NAD83(2011) GEOID: GEOID 12A
 GRID: NORTHING: 494969.434 EASTING: 1800355.655

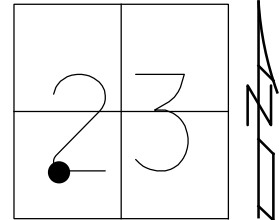
RECORD:
 FD LG R.R SPIKE
 4.0' S. TR 1068
 7/25/00, MB
 SET P.K./WASHER
 10-17-00, MRC
 FD P.K./WASHER
 2-21-14, TMR
 SET MAG/WASHER
 NEWREF10
 5-31-18, JFO



O.D.O.T. DISTRICT 2 SURVEY OFFICE (USE ONLY)

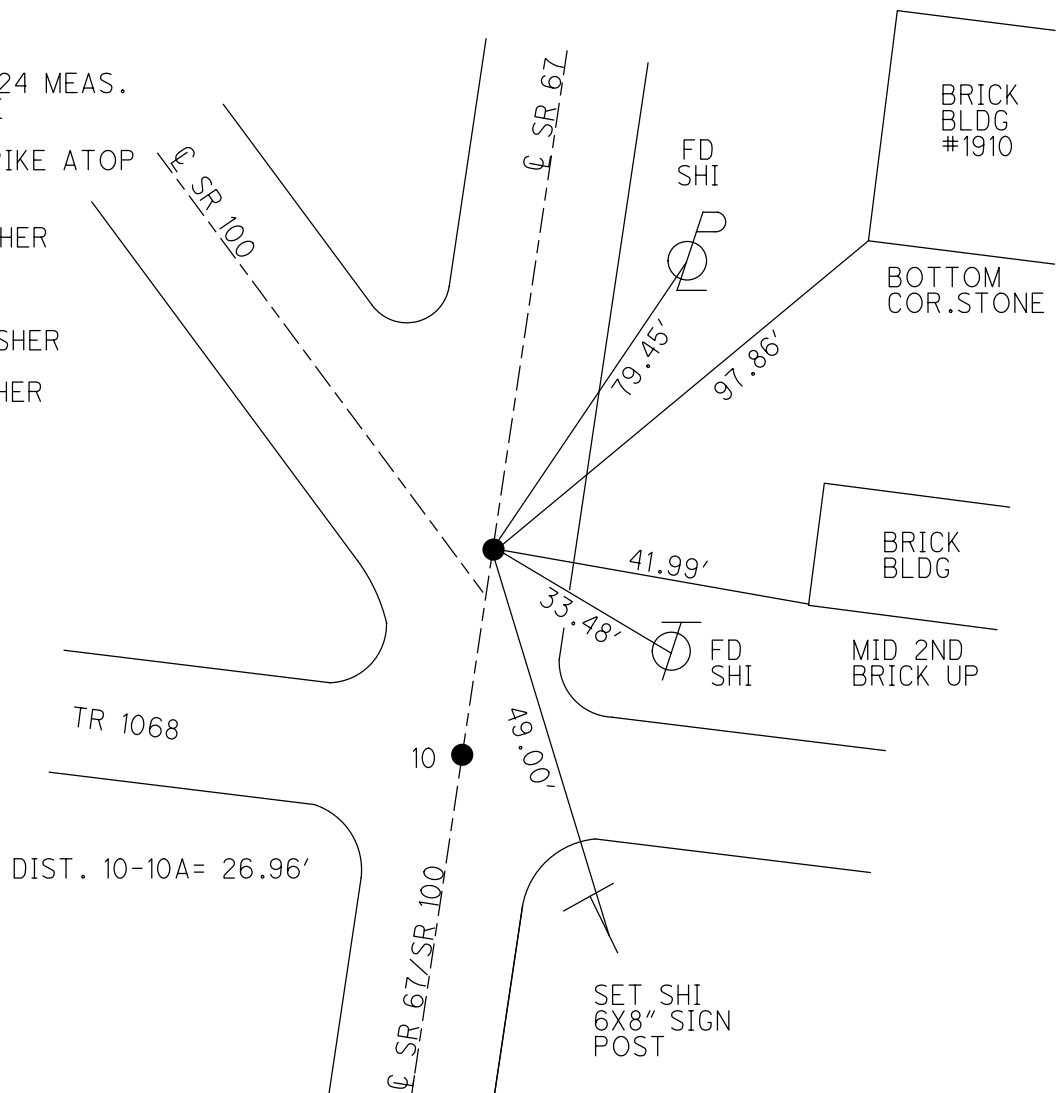
PERSONNEL _____ REFERENCE NO. 10A SHEET 12 OF 46
 NOTES RHOADES DATE 7/12/17 ROUTE SR 100
 H.C. O'DONNELL WEATHER CLOUDY COUNTY SENECA
 R.C. RHOADES TEMP. 79° TOWNSHIP EDEN
 DWG BY MILLER PID 107060 SECTION 23
 T 1 N R 15 E

TYPE MONUMENT P.K./WASHER
~~ON SURFACE~~ - BELOW 4"
 OFFSET ☉ PAVEMENT ON LT : RT
- TO - EDGE PAVEMENT
 STATION: 119+81.78



HORZ. DATUM: NAD83(2011) GEOID: GEOID 12A
 GRID: NORTHING: 494996.005 EASTING: 1800359.894

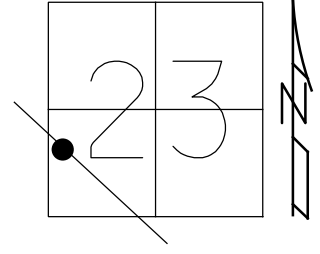
RECORD: P.I.
 1951 PLANS
 STA. 119+82.24 MEAS.
 FD R.R.SPIKE
 6" DOWN
 SET BOLT SPIKE ATOP
 R.R.SPIKE
 7/11/78
 FD P.K./WASHER
 4" DOWN
 REF10
 2/4/16, JFO
 SET MAG/WASHER
 11/9/17, JFO
 FD MAG/WASHER
 5/31/18, JFO



O.D.O.T. DISTRICT 2 SURVEY OFFICE (USE ONLY)

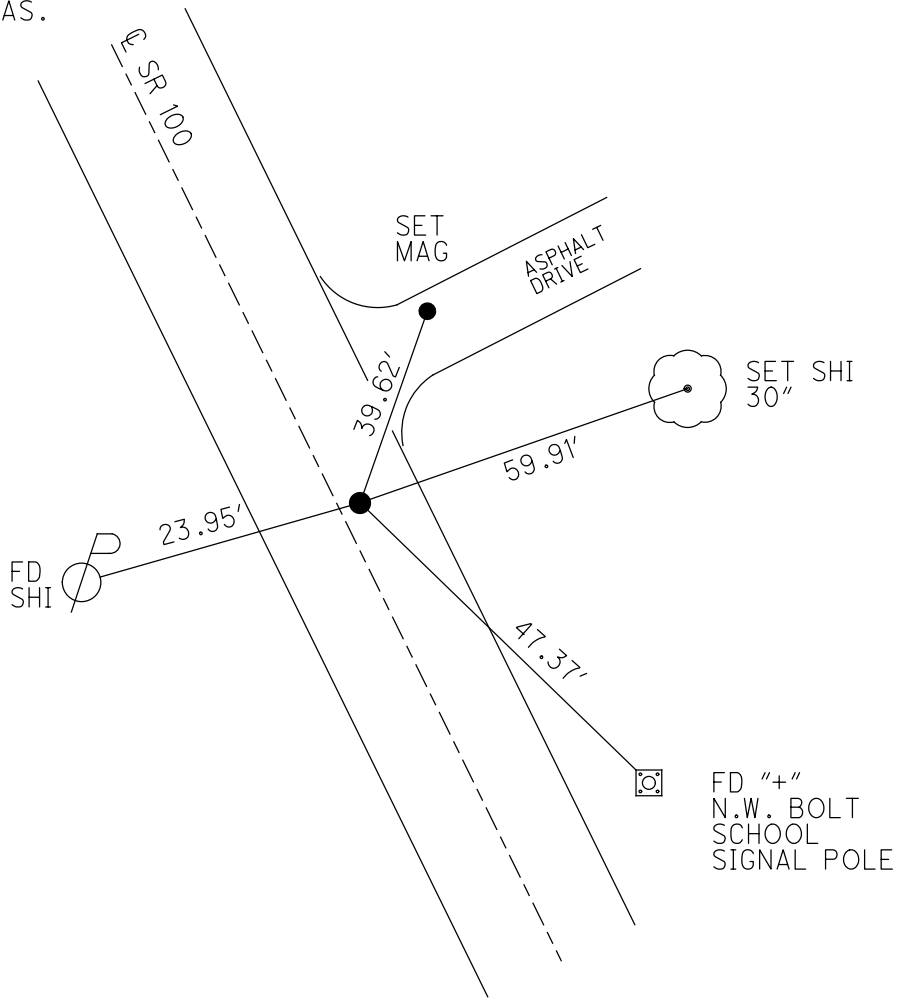
PERSONNEL _____ REFERENCE NO. 11 SHEET 13 OF 46
 NOTES RHODES DATE 6/15/22 ROUTE SR 100
 H.C. AUBLE WEATHER SUNNY COUNTY SENECA
 R.C. WHITAKER TEMP. 82° TOWNSHIP EDEN
 DWG BY WHITAKER PID 95778 SECTION 23
 T 1 N R 15 E

TYPE MONUMENT MAG/WASHER
 ON SURFACE - ~~BELOW~~ ON
 OFFSET 2.2' ± : RT
7.9' TO RT EDGE PAVEMENT
 STATION: 135+45



HORZ.DATUM: NAD83(2011) GEOID: 2012A
 GRID: NORTHING: 496412.214 EASTING: 1799605.916

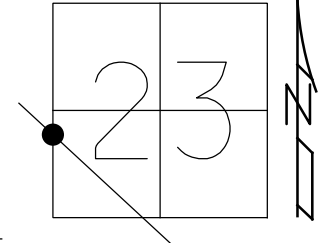
RECORD: P.O.T.
 STA.135+86.80 MEAS.
 SET P.K./WASHER
 ATOP BOAT SPIKE
 ATOP R.R.SPIKE
 8" DOWN
 SET P.K./WASHER
 10-17-00, MRC
 FD BOAT SPIKE
 4" DOWN
 REF11
 1-24-19
 8-19-19, JFO
 FD BOAT SPIKE
 4" DOWN
 REF 11
 1/24/19, JFO
 SET MAG/WASHER
 NEWREF11
 6/15/22, DSA



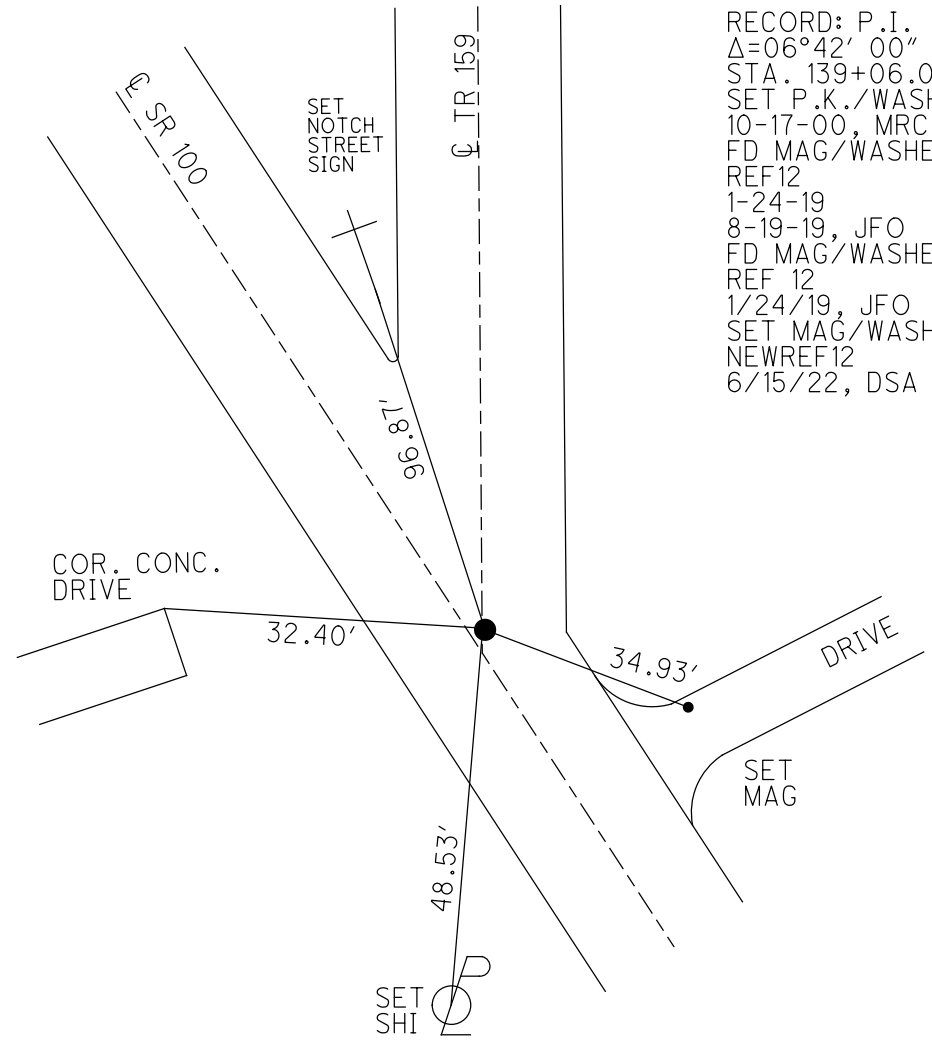
O.D.O.T. DISTRICT 2 SURVEY OFFICE (USE ONLY)

PERSONNEL _____ REFERENCE NO. 12 SHEET 14 OF 46
 NOTES RHOADES DATE 6/15/22 ROUTE SR 100
 H.C. AUBLE WEATHER SUNNY COUNTY SENECA
 R.C. WHITAKER TEMP. 82° TOWNSHIP EDEN
 DWG BY WHITAKER PID 95778 SECTION 23
 T 1 N R 15 E

TYPE MONUMENT MAG/WASHER
 ON SURFACE - ~~BELOW~~ ON
 OFFSET \varnothing PAVEMENT 4.7' ~~LT~~ : RT
15.5' TO LT EDGE PAVEMENT
 STATION: 138+62



HORZ. DATUM: NAD83(2011) GEOID: 2012A
 GRID: NORTHING: 496694.078 EASTING: 1799455.981



RECORD: P.I.
 $\Delta=06^{\circ}42'00''$
 STA. 139+06.05
 SET P.K./WASHER
 10-17-00, MRC
 FD MAG/WASHER
 REF12
 1-24-19
 8-19-19, JFO
 FD MAG/WASHER
 REF 12
 1/24/19, JFO
 SET MAG/WASHER
 NEWREF12
 6/15/22, DSA

O.D.O.T. DISTRICT 2 SURVEY OFFICE (USE ONLY)

PERSONNEL

REFERENCE NO. 12 A

SHEET 15 OF 46

NOTES CANTERBURY

DATE 7-25-00

ROUTE SR 100

H.C. BARNHISEL

WEATHER SUNNY

COUNTY SENECA

R.C. MOSEER

TEMP. 82°

TOWNSHIP EDEN

DWG BY NIESE

PID 107060

SECTION 22 AND 23

T 1 N R 15 E

TYPE MONUMENT P.K./WASHER

ON SURFACE - ~~BELOW~~ ON

OFFSET Q PAVEMENT 4.3' ~~LT~~ : RT

16.6' TO LT EDGE PAVEMENT

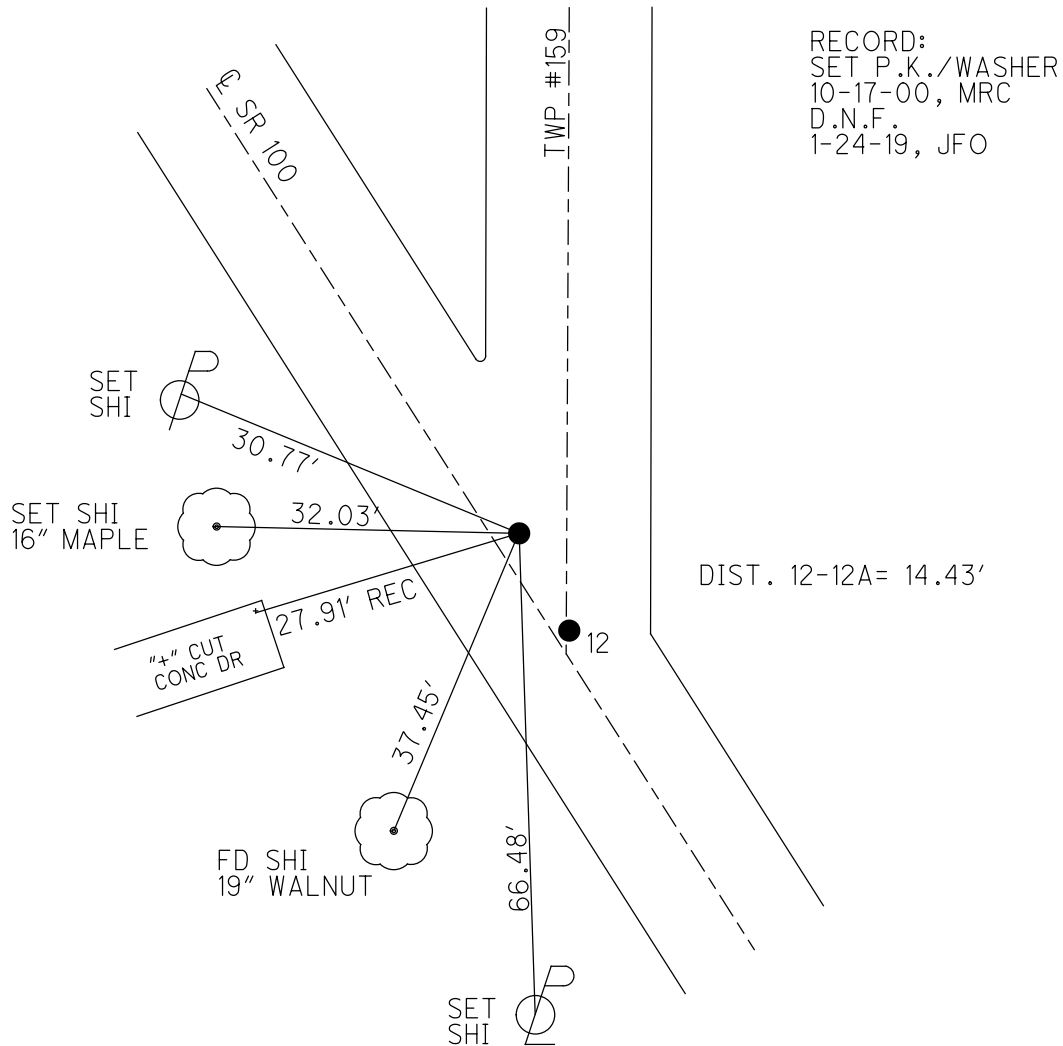
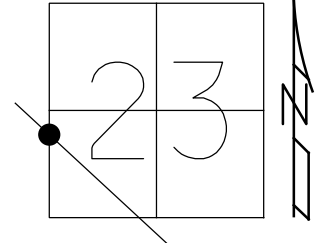
STATION: 138+76

HORIZ.DATUM: -

GEOID: -

GRID: NORTHING: -

EASTING: -



O.D.O.T. DISTRICT 2 SURVEY OFFICE (USE ONLY)

PERSONNEL

REFERENCE NO. 13

SHEET 16 OF 46

NOTES RHOADES

DATE 6/15/22

ROUTE SR 100

H.C. AUBLE

WEATHER SUNNY

COUNTY SENECA

R.C. WHITAKER

TEMP. 82°

TOWNSHIP EDEN

DWG BY WHITAKER PID 95778

SECTION 22

T 1 N R 15 E

TYPE MONUMENT MAG/WASHER

ON SURFACE - ~~BELOW~~ ON

OFFSET CL PAVEMENT 2.6' LT : ~~RT~~

7.9' TO RT EDGE PAVEMENT

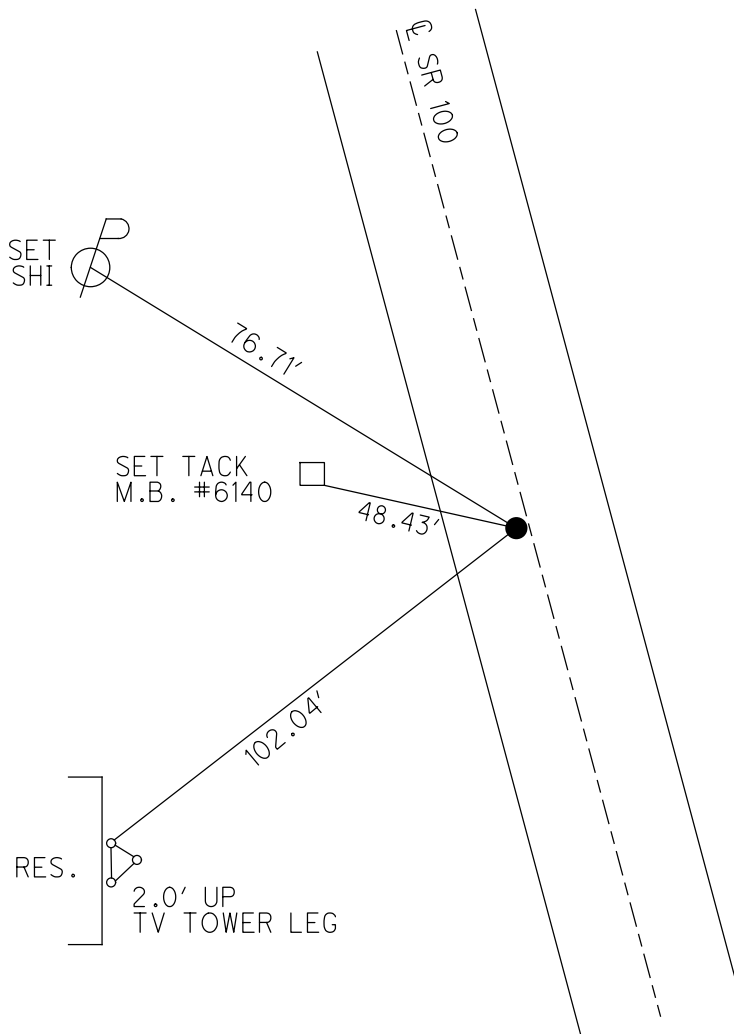
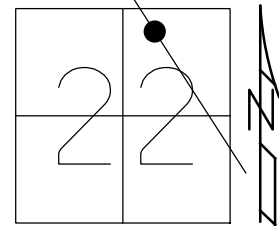
STATION: 168+77

HORZ.DATUM: NAD83(2011)

GEOID: 2012A

GRID: NORTHING: 499176.428

EASTING: 1797734.422



RECORD: P.O.T.
 STA.169+27.01
 FD P.K.SHANK
 ATOP P.K./WASHER
 ATOP R.R. SPIKE
 SET P.K./WASHER
 10-18-00, MRC
 FD P.K. NAIL
 REF13
 1-24-19
 8-19-19, JFO
 SET MAG/WASHER
 NEWREF13
 6/15/22, DSA

O.D.O.T. DISTRICT 2 SURVEY OFFICE (USE ONLY)

PERSONNEL

REFERENCE NO. 14

SHEET 17 OF 46

NOTES RHOADES DATE 6/15/22
 H.C. AUBLE WEATHER SUNNY
 R.C. WHITAKER TEMP. 82°

ROUTE SR 100
 COUNTY SENECA
 TOWNSHIP EDEN
 SECTION 22

DWG BY WHITAKER PID 95778

T 1 N R 15 E

TYPE MONUMENT MAG/WASHER

ON SURFACE - ~~BELOW~~ ON

OFFSET \varnothing PAVEMENT 1.1' LT : ~~RT~~

- TO - EDGE PAVEMENT

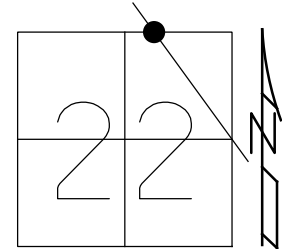
STATION: 176+93

HORZ.DATUM: NAD83(2011)

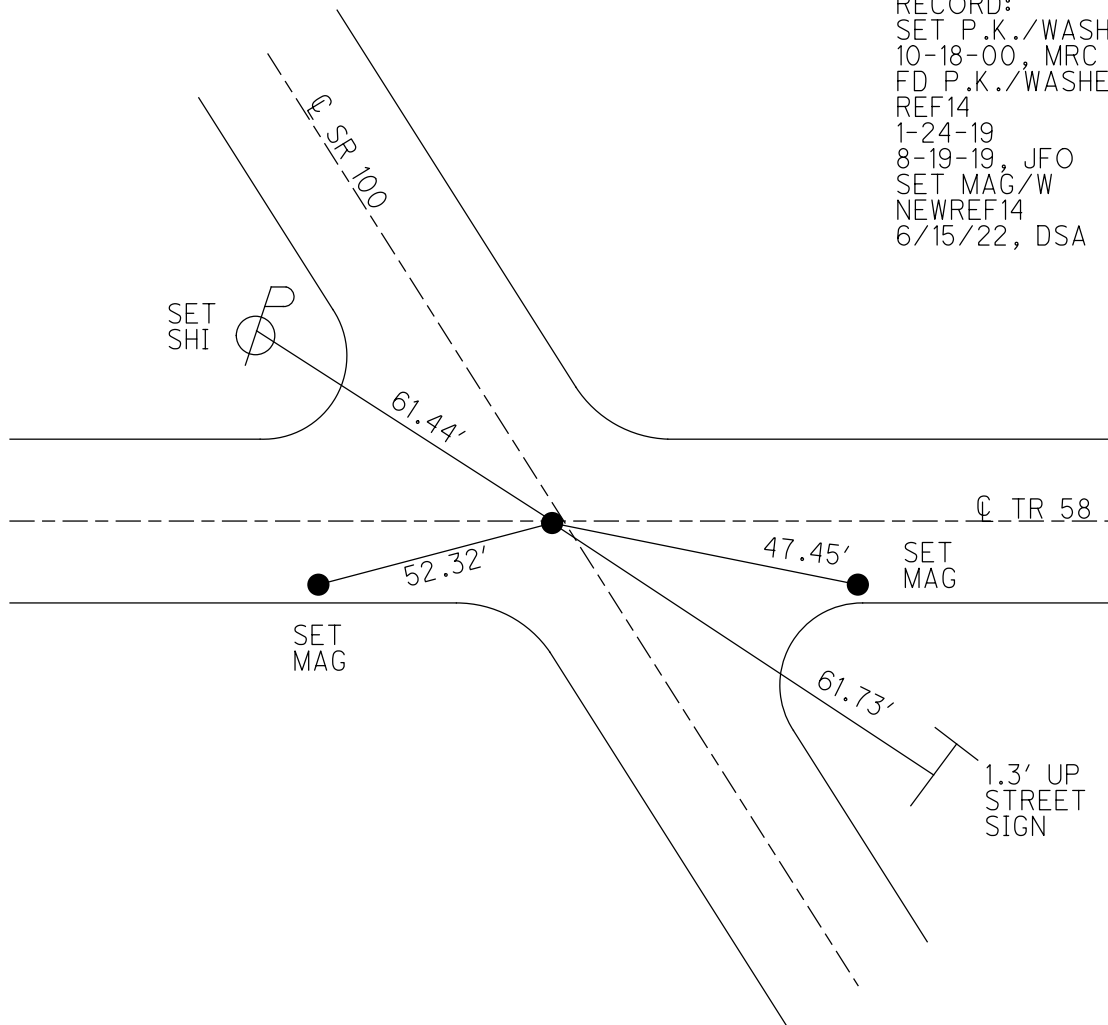
GEOID: 2012A

GRID: NORTHING: 499848.504

EASTING: 1797268.623



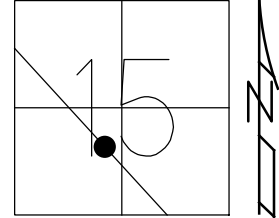
RECORD:
 SET P.K./WASHER
 10-18-00, MRC
 FD P.K./WASHER
 REF14
 1-24-19
 8-19-19, JFO
 SET MAG/W
 NEWREF14
 6/15/22, DSA



O.D.O.T. DISTRICT 2 SURVEY OFFICE (USE ONLY)

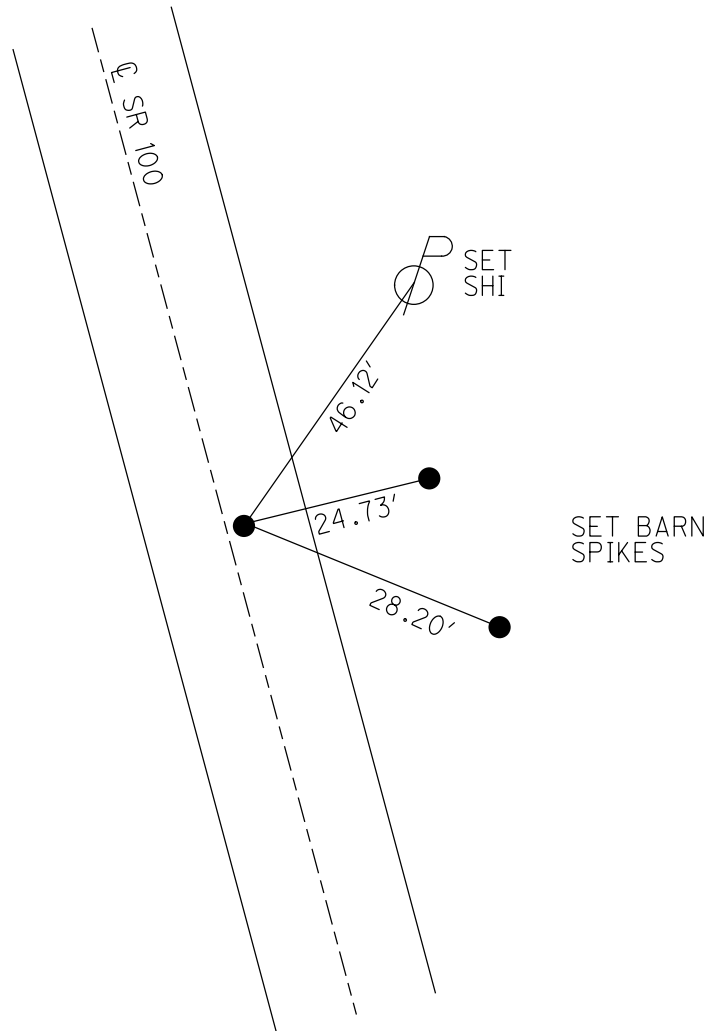
PERSONNEL _____ REFERENCE NO. 14 A SHEET 18 OF 46
 NOTES RHOADES DATE 6/15/22 ROUTE SR 100
 H.C. AUBLE WEATHER SUNNY COUNTY SENECA
 R.C. WHITAKER TEMP. 82° TOWNSHIP EDEN
 DWG BY WHITAKER PID 95778 SECTION 15
 T 1 N R 15 E

TYPE MONUMENT MAG/WASHER
 ON SURFACE - ~~BELOW~~ ON
 OFFSET ☉ PAVEMENT 2.2' ~~LT~~ : RT
8.4' TO RT EDGE PAVEMENT
 STATION: 193+04



HORIZ.DATUM: NAD83(2011) GEOID: 2012A
 GRID: NORTHING: 501175.053 EASTING: 1796349.004

RECORD: P.O.T.
 STA.193+58.94
 FD P.K./WASHER
 ATOP BOAT SPIKE
 ATOP R.R. SPIKE
 SET P.K./WASHER
 10-18-00, MRC
 FD P.K./WASHER
 REFA14
 1-24-19
 8-19-19, JFO
 SET MAG/WASHER
 NEWREFA14
 6/15/22, DSA

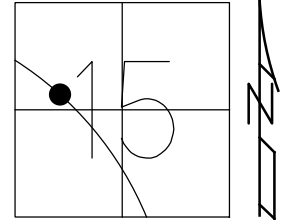


O.D.O.T. DISTRICT 2 SURVEY OFFICE (USE ONLY)

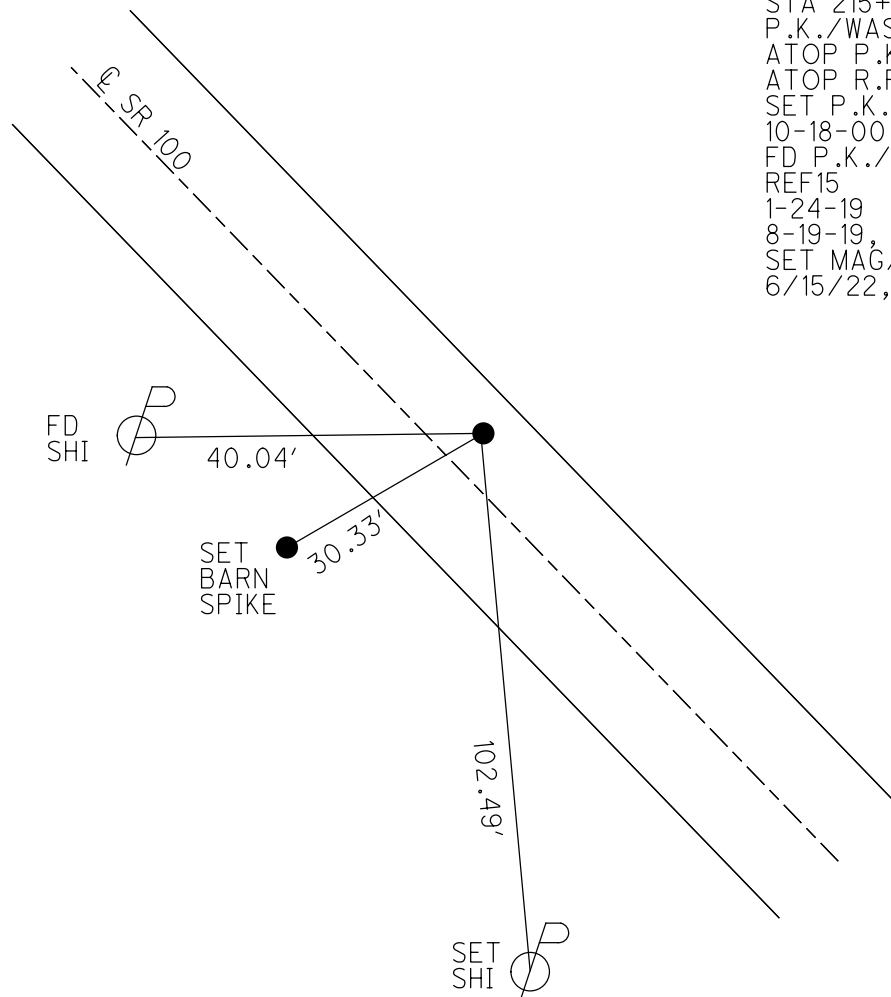
PERSONNEL _____ REFERENCE NO. 15 SHEET 19 OF 46
 NOTES RHOADES DATE 6/15/22 ROUTE SR 100
 H.C. AUBLE WEATHER SUNNY COUNTY SENECA
 R.C. WHITAKER TEMP. 82° TOWNSHIP EDEN
 DWG BY WHITAKER PID 95778 SECTION 15
 T 1 N R 15 E

TYPE MONUMENT MAG/WASHER
 ON SURFACE - ~~BELOW~~ ON
 OFFSET \odot PAVEMENT 7.3' ~~RT~~ : RT
3.5' TO RT EDGE PAVEMENT
 STATION: 216+95

HORIZ.DATUM: NAD83(2011) GEOID: 2012A
 GRID: NORTHING: 503144.733 EASTING: 1794983.214



RECORD: P.I.
 $\Delta = 11^{\circ}51' 40''$
 STA 215+55.85
 P.K./WASHER
 ATOP P.K./WASHER
 ATOP R.R. SPIKE
 SET P.K./WASHER
 10-18-00, MRC
 FD P.K./WASHER
 REF15
 1-24-19
 8-19-19, JFO
 SET MAG/WASHER
 6/15/22, DSA



O.D.O.T. DISTRICT 2 SURVEY OFFICE (USE ONLY)

PERSONNEL

REFERENCE NO. 16

SHEET 20 OF 46

NOTES RHOADES

DATE 7/12/21

ROUTE SR 100

H.C. AUBLE

WEATHER OVERCAST

COUNTY SENECA

R.C. NIESE

TEMP. 72°

TOWNSHIP EDEN

SECTION 15

DWG BY WHITAKER

PID 95778

T 1 N R 15 E

TYPE MONUMENT MAG/WASHER

ON SURFACE - ~~BELOW~~ ON

OFFSET \varnothing PAVEMENT 26.4' ~~LT~~ : RT

8.9' TO WEST EDGE PAVEMENT

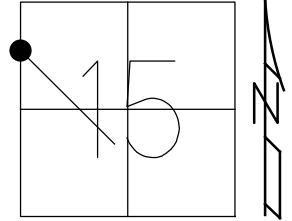
STATION: 227+21

HORZ. DATUM: NAD83(2011)

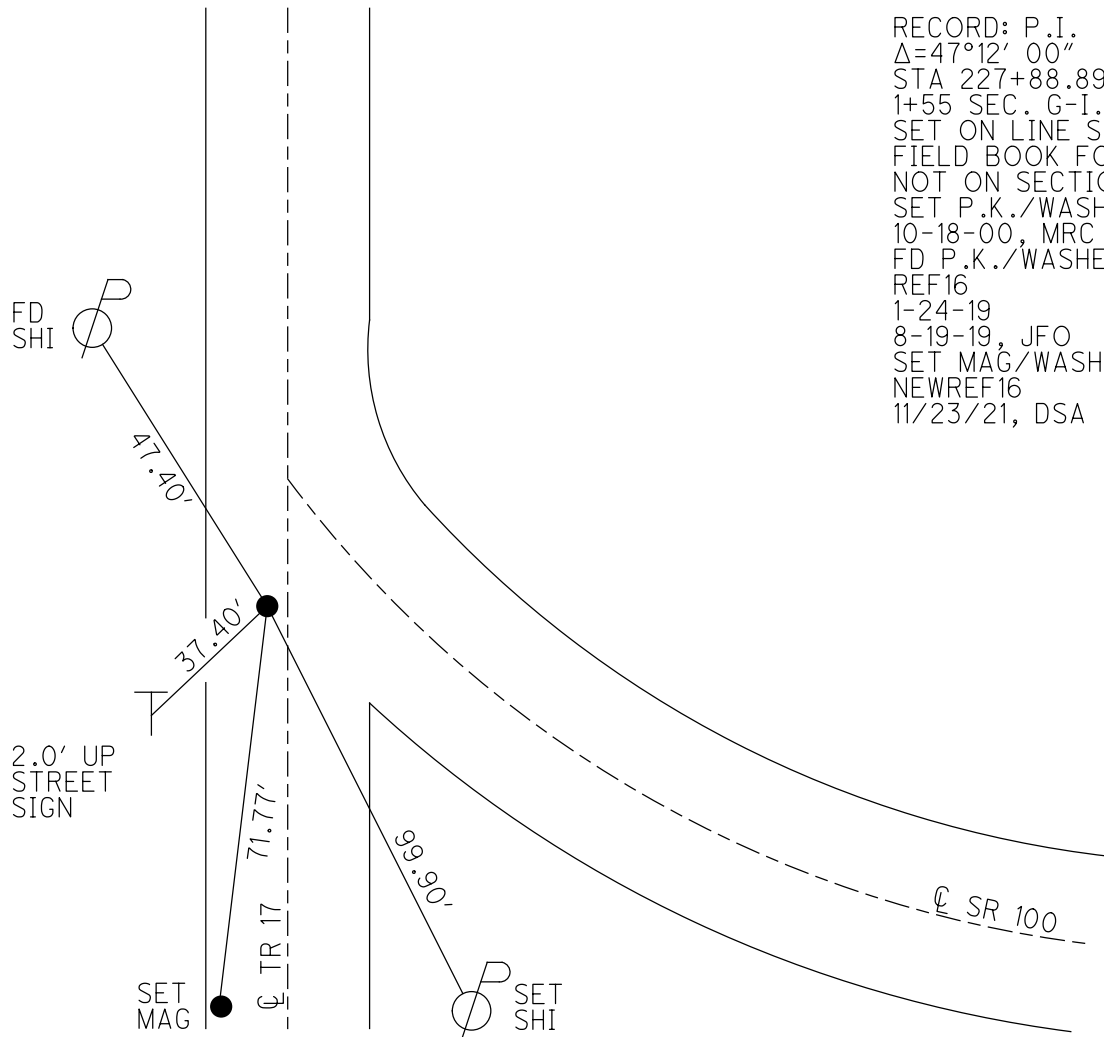
GEOID: 2012A

GRID: NORTHING: 503854.796

EASTING: 1794232.529



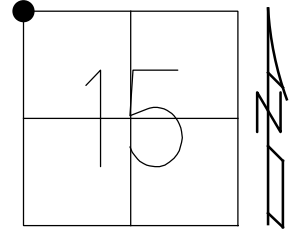
RECORD: P.I.
 $\Delta=47^{\circ}12'00''$
 STA 227+88.89
 1+55 SEC. G-I.C.H. #199
 SET ON LINE SHOWN IN
 FIELD BOOK FOR THIS SEC.
 NOT ON SECTION LINE
 SET P.K./WASHER
 10-18-00, MRC
 FD P.K./WASHER
 REF16
 1-24-19
 8-19-19, JFO
 SET MAG/WASHER
 NEWREF16
 11/23/21, DSA



O.D.O.T. DISTRICT 2 SURVEY OFFICE (USE ONLY)

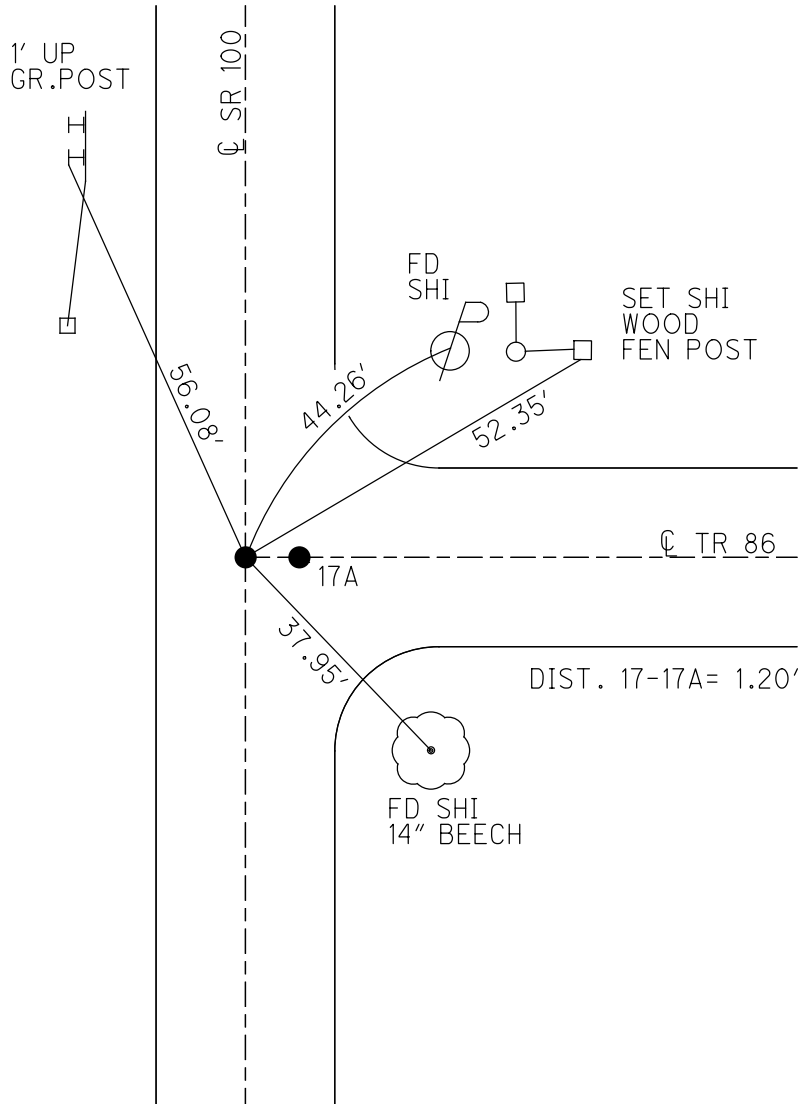
PERSONNEL _____ REFERENCE NO. 17 SHEET 21 OF 46
 NOTES RHOADES DATE 7/12/21 ROUTE SR 100
 H.C. AUBLE WEATHER OVERCAST COUNTY SENECA
 R.C. NIESE TEMP. 72° TOWNSHIP EDEN
 DWG BY WHITAKER PID 95778 SECTION 15
 T 1 N R 15 E

TYPE MONUMENT MAG/WASHER
 ON SURFACE - ~~BELOW~~ ON _____
 OFFSET \bar{C} PAVEMENT 0.5' LT : ~~RT~~
10.1 TO LT EDGE PAVEMENT
 STATION: 239+59



HORZ.DATUM: NAD83(2011) GEOID: 2012A
 GRID: NORTHING: 505095.917 EASTING: 1794244.518

RECORD:
 SECTION CORNER
 FD GREENISH
 GRANITE STONE
 7"x8"x?
 15" DOWN
 ALSO FD PARTS
 OF OLD STAKE
 SET P.K./WASHER
 4/25/84
 FD P.K./WASHER
 7/25/00
 SET P.K./WASHER
 10-18-00, MRC
 FD MAG NAIL
 REF17
 1-24-19
 8-19-19, JFO
 FD P.K./WASHER
 2" DOWN
 REF 17
 7/12/21, DSA
 SET MAG/WASHER
 NEWREF17
 11/23/21, DSA



O.D.O.T. DISTRICT 2 SURVEY OFFICE (USE ONLY)

PERSONNEL

REFERENCE NO. 17 A

SHEET 22 OF 46

NOTES RHOADES

DATE 7/12/21

ROUTE SR 100

H.C. AUBLE

WEATHER OVERCAST

COUNTY SENECA

R.C. NIESE

TEMP. 72°

TOWNSHIP EDEN

SECTION 15

DWG BY WHITAKER

PID 95778

T 1 N R 15 E

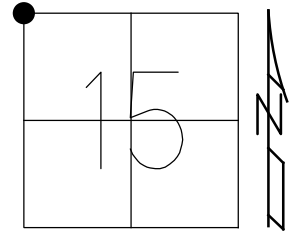
TYPE MONUMENT MAG/WASHER

ON SURFACE - ~~BELOW~~ ON

OFFSET Q PAVEMENT 0.9' LT : RT

11.5' TO LT EDGE PAVEMENT

STATION: 239+59



HORZ. DATUM: NAD83(2011)

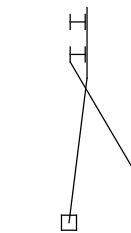
GEOID: 2012A

GRID: NORTHING: 505095.995

EASTING: 1794245.697

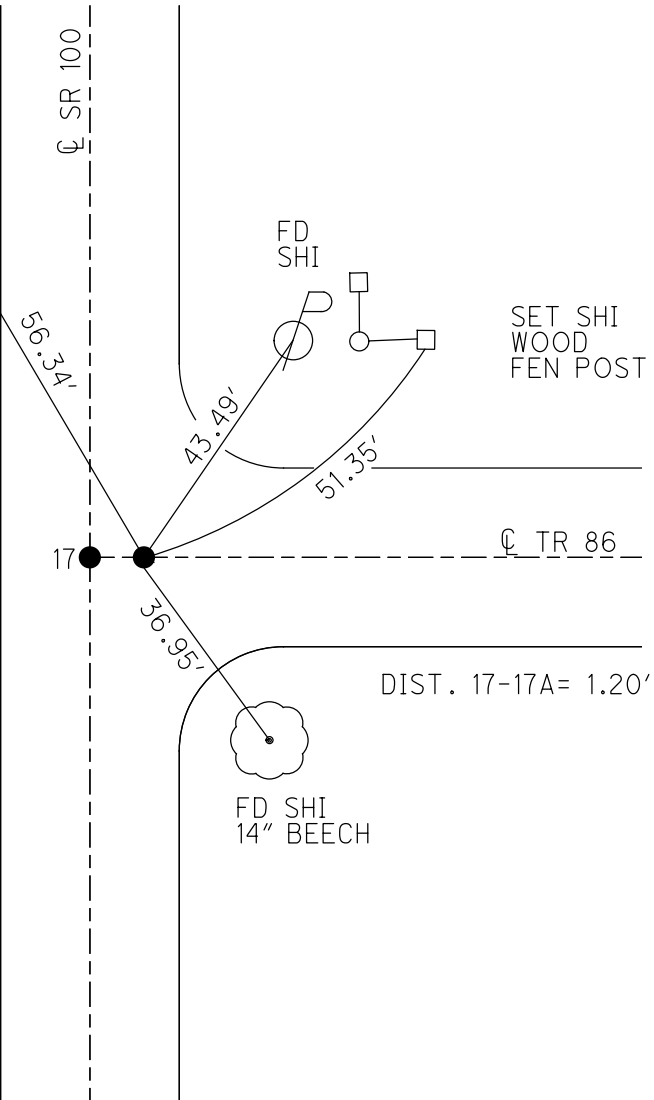
RECORD:
 SET P.K./WASHER
 4/25/84
 FD P.K./WASHER
 7/25/00
 SET P.K./WASHER
 10-18-00, MRC
 FD MAG NAIL
 REF A17
 1-24-19
 8-19-19, JFO
 FD MAG
 REF 17A
 7/12/21, DSA
 SET MAG/WASHER
 NEWREF17A
 11/23/21, DSA

1' UP
GR. POST



Q SR 100

17



SET SHI
WOOD
FEN POST

DIST. 17-17A= 1.20'

FD SHI
14" BEECH

O.D.O.T. DISTRICT 2 SURVEY OFFICE (USE ONLY)

PERSONNEL _____ REFERENCE NO. 18 SHEET 23 OF 46
 NOTES RHOADES DATE 7/12/21 ROUTE SR 100
 H.C. AUBLE WEATHER OVERCAST COUNTY SENECA
 R.C. NIESE TEMP. 72° TOWNSHIP EDEN
 DWG BY WHITAKER PID 95778 SECTION 10
 T 1 N R 15 E

TYPE MONUMENT MAG/WASHER

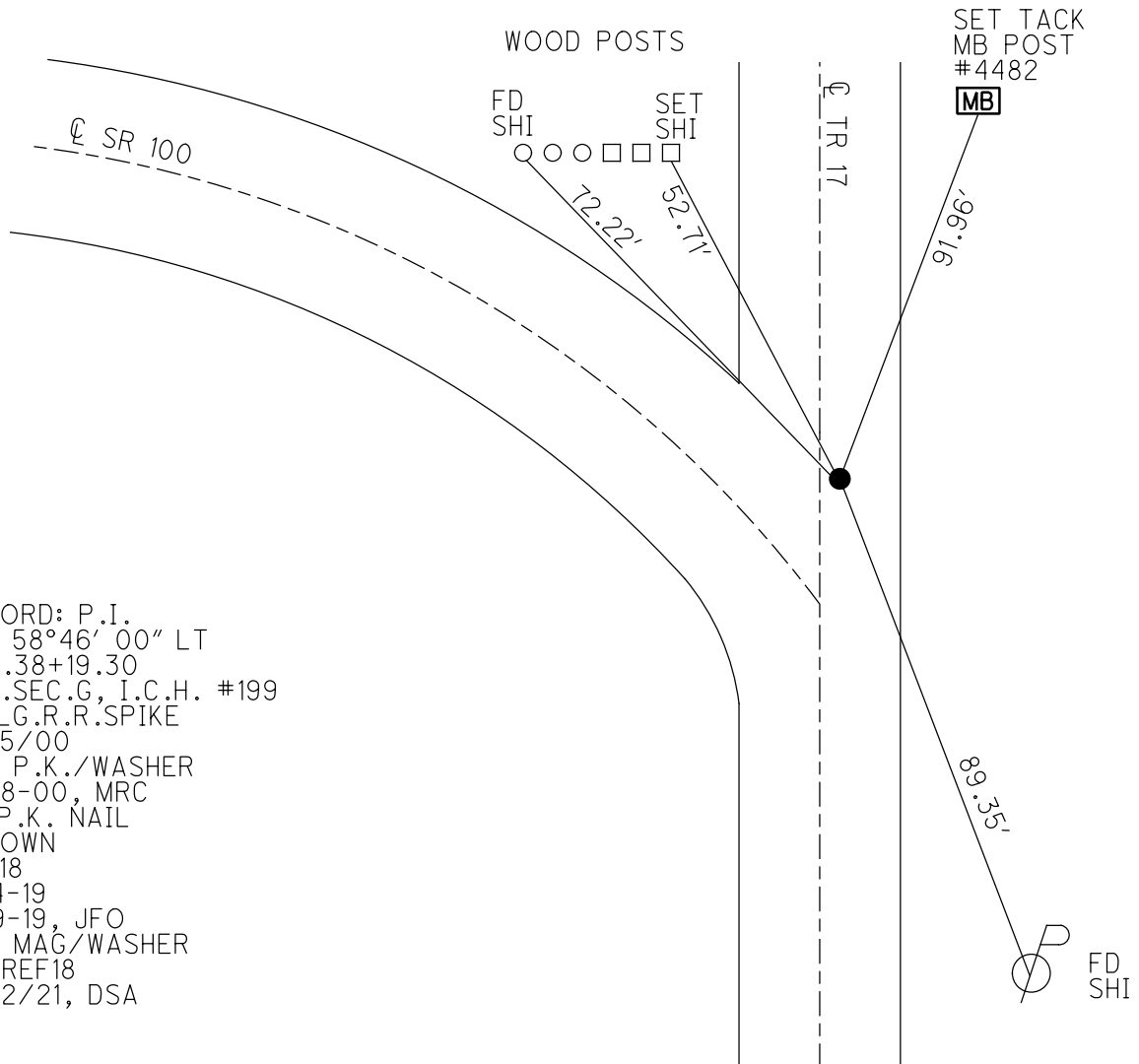
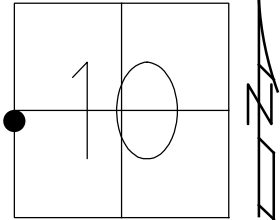
~~ON SURFACE~~ - BELOW ON

OFFSET ℄ PAVEMENT 43.1' ~~LT~~ : RT
8.8' TO RT EDGE PAVEMENT (T.R. #17)

STATION: 263+53

HORZ.DATUM: NAD83(2011) GEOID: 2012A

GRID: NORTHING: 507529.362 EASTING: 1794271.578



RECORD: P.I.
 $\Delta = 58^{\circ}46'00''$ LT
 STA.38+19.30
 REC.SEC.G, I.C.H. #199
 FD LG.R.R.SPIKE
 7/25/00
 SET P.K./WASHER
 10-18-00, MRC
 FD P.K. NAIL
 1" DOWN
 REF18
 1-24-19
 8-19-19, JFO
 SET MAG/WASHER
 NEWREF18
 11/22/21, DSA

O.D.O.T. DISTRICT 2 SURVEY OFFICE (USE ONLY)

PERSONNEL

REFERENCE NO. 18 A

SHEET 24 OF 46

NOTES RHOADES
 H.C. AUBLE
 R.C. NIESE

DATE 7/12/21
 WEATHER OVERCAST
 TEMP. 72°

ROUTE SR 100
 COUNTY SENECA
 TOWNSHIP EDEN
 SECTION 9
 T 1 N R 15 E

DWG BY WHITAKER PID 95778

TYPE MONUMENT 1 1/4" O.D. I PIN

ON SURFACE - ~~BELOW~~ ON

OFFSET Q PAVEMENT 20' LT : ~~RT~~
8.9' TO LT EDGE PAVEMENT

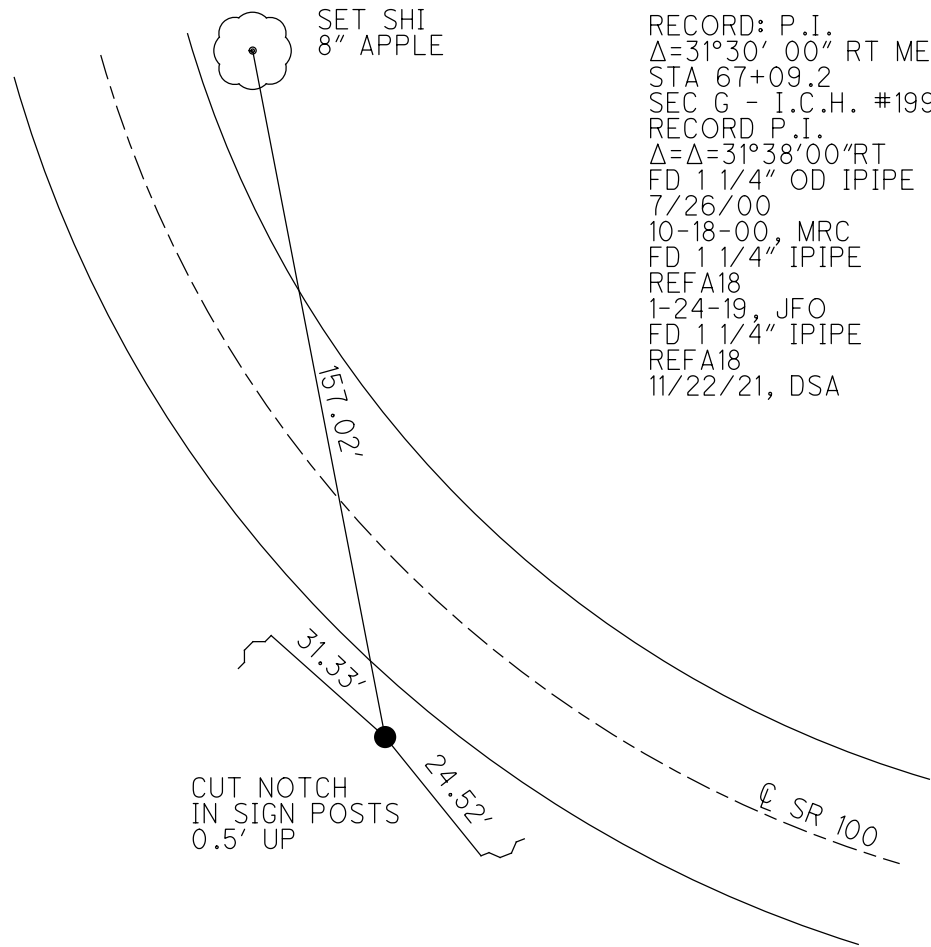
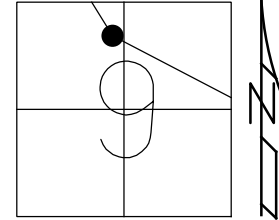
STATION: 289+17

HORZ. DATUM: NAD83(2011)

GEOID: 2012A

GRID: NORTHING: 509064.149

EASTING: 1791799.565



RECORD: P.I.
 $\Delta=31^{\circ}30'00''$ RT MEAS.
 STA 67+09.2
 SEC G - I.C.H. #199
 RECORD P.I.
 $\Delta=31^{\circ}38'00''$ RT
 FD 1 1/4" OD IPIPE
 7/26/00
 10-18-00, MRC
 FD 1 1/4" IPIPE
 REFA18
 1-24-19, JFO
 FD 1 1/4" IPIPE
 REFA18
 11/22/21, DSA

O.D.O.T. DISTRICT 2 SURVEY OFFICE (USE ONLY)

PERSONNEL

REFERENCE NO. 19

SHEET 25 OF 46

NOTES RHOADES

DATE 7/12/21

ROUTE SR 100

H.C. AUBLE

WEATHER CLOUDY

COUNTY SENECA

R.C. NIESE

TEMP. 72°

TOWNSHIP EDEN

SECTION 9

DWG BY WHITAKER PID 107060

T 1 N R 15 E

TYPE MONUMENT MAG/WASHER

ON SURFACE - ~~BELOW~~ ON

OFFSET 1' LT : ~~RT~~

-- TO -- EDGE PAVEMENT 3' S. CR 16E

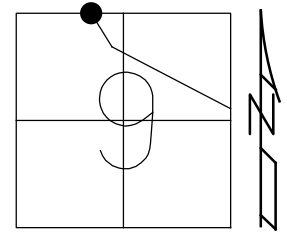
STATION: 306+68

HORZ. DATUM: NAD83(2011)

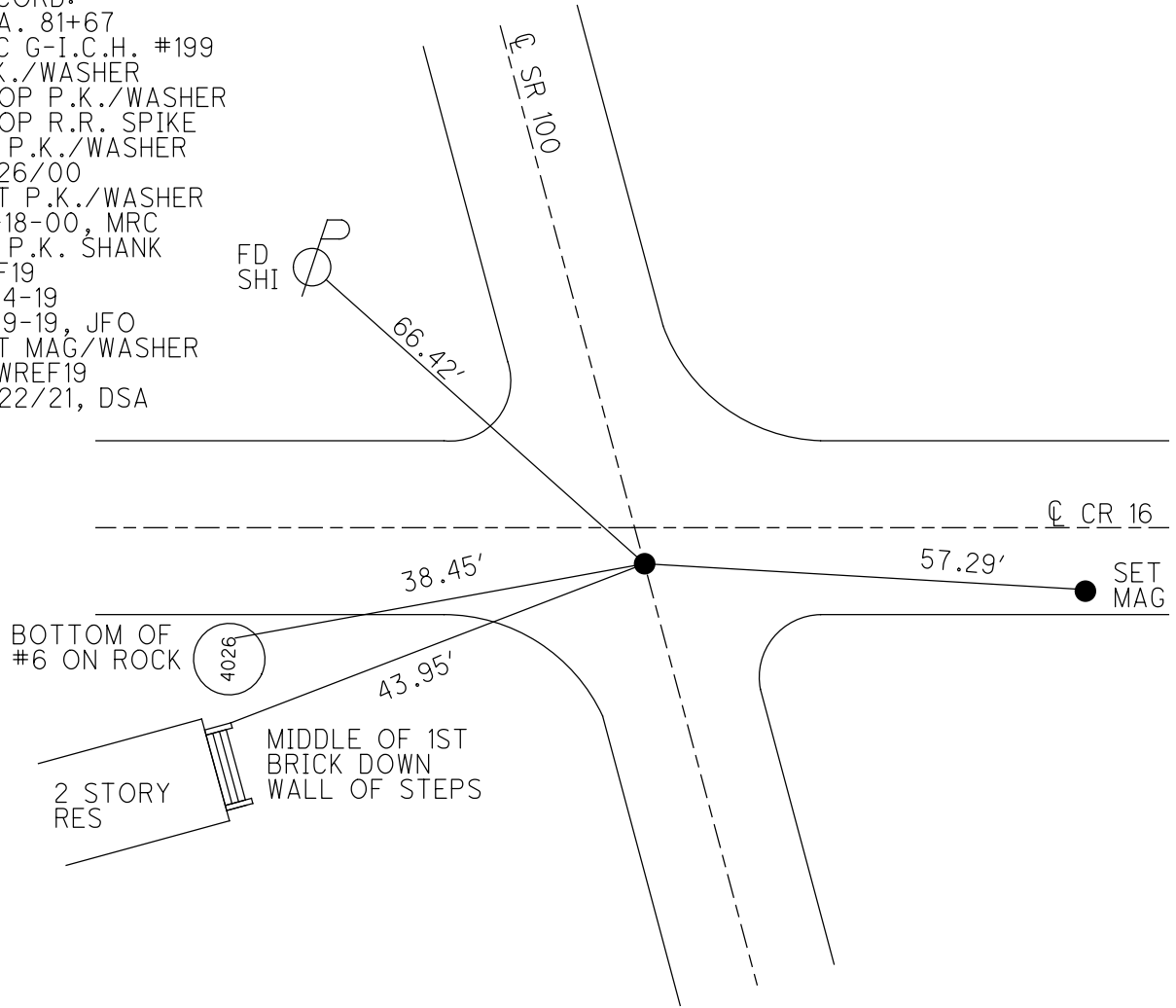
GEOID: 2012A

GRID: NORTHING: 510350.132

EASTING: 1791157.531



RECORD:
 STA. 81+67
 SEC G-I.C.H. #199
 P.K./WASHER
 ATOP P.K./WASHER
 ATOP R.R. SPIKE
 FD P.K./WASHER
 7/26/00
 SET P.K./WASHER
 10-18-00, MRC
 FD P.K. SHANK
 REF19
 1-24-19
 8-19-19, JFO
 SET MAG/WASHER
 NEWREF19
 11/22/21, DSA

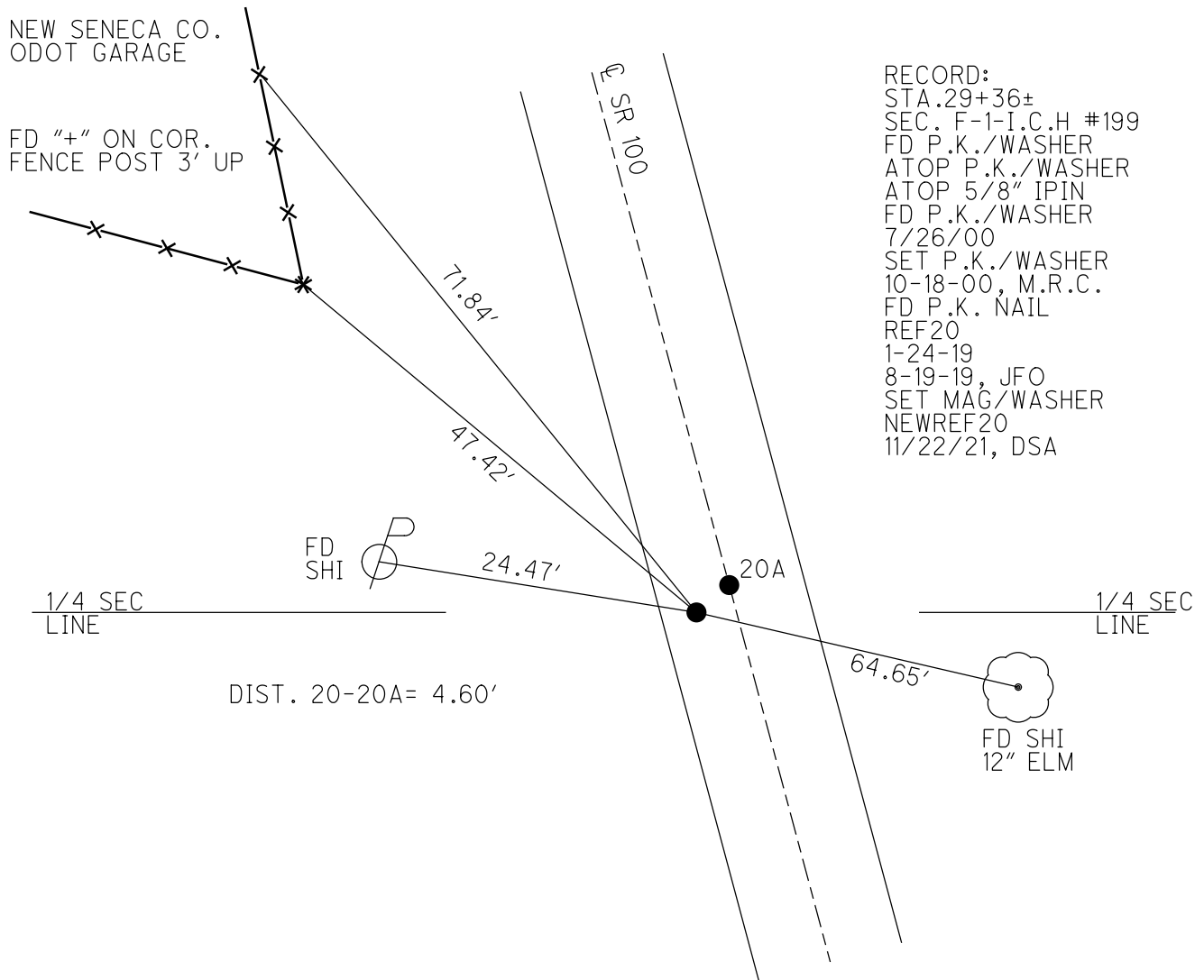
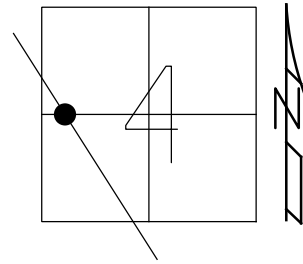


O.D.O.T. DISTRICT 2 SURVEY OFFICE (USE ONLY)

PERSONNEL _____ REFERENCE NO. 20 SHEET 26 OF 46
 NOTES RHOADES DATE 7/12/21 ROUTE SR 100
 H.C. AUBLE WEATHER CLOUDY COUNTY SENECA
 R.C. NIESE TEMP. 72° TOWNSHIP EDEN
 DWG BY WHITAKER PID 95778 SECTION 4
 T 1 N R 15 E

TYPE MONUMENT MAG/WASHER
 ON SURFACE - ~~BELOW~~ ON _____
 OFFSET ☉ PAVEMENT 4.5' LT : ~~RT~~
5.8' TO LT EDGE PAVEMENT
 STATION: 336+77

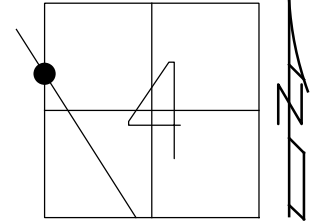
HORZ.DATUM: NAD83(2011) GEOID: 2012A
 GRID: NORTHING: 512987.364 EASTING: 1789831.831



O.D.O.T. DISTRICT 2 SURVEY OFFICE (USE ONLY)

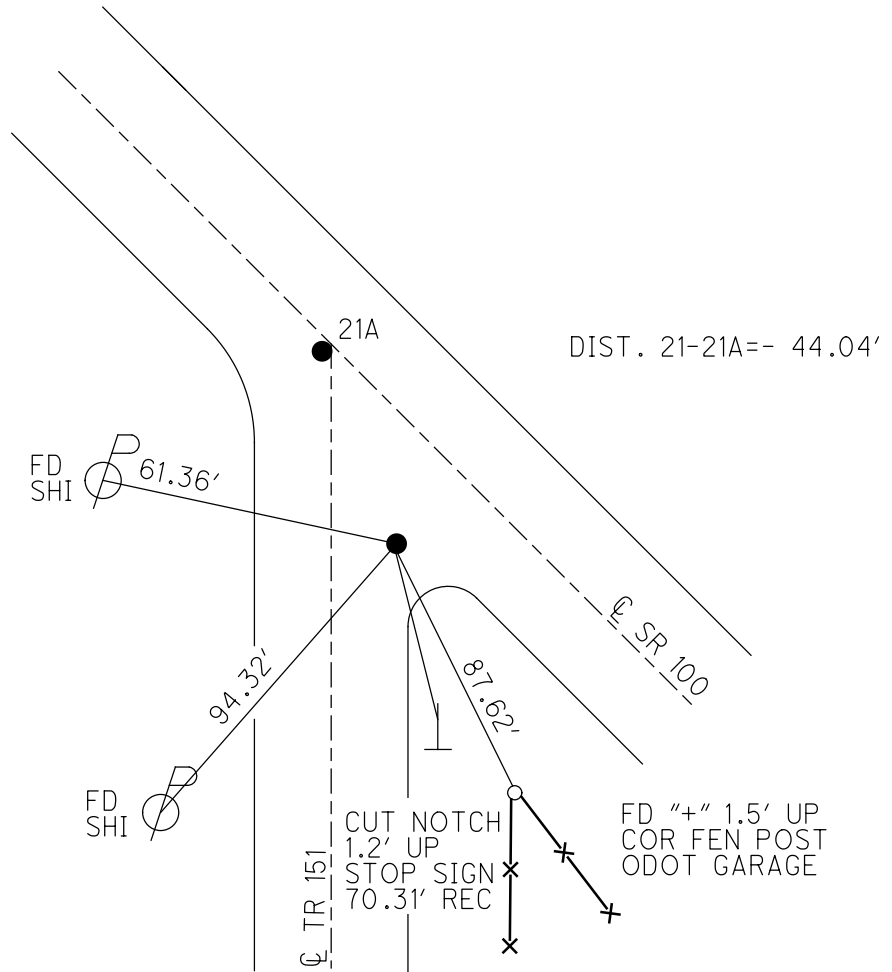
PERSONNEL	REFERENCE NO. <u>21</u>	SHEET <u>28</u> OF <u>46</u>
NOTES <u>RHOADES</u>	DATE <u>7/12/21</u>	ROUTE <u>SR 100</u>
H.C. <u>AUBLE</u>	WEATHER <u>CLOUDY</u>	COUNTY <u>SENECA</u>
R.C. <u>NIESE</u>	TEMP. <u>72°</u>	TOWNSHIP <u>EDEN</u>
		SECTION <u>4</u>
DWG BY <u>WHITAKER</u>	PID <u>95778</u>	T <u>1</u> N R <u>15</u> E

TYPE MONUMENT MAG/WASHER
 ON SURFACE - ~~BELOW~~ ON
 OFFSET \odot PAVEMENT 11.2' LT : ~~RT~~
0.2' TO LT EDGE PAVEMENT 7.5' E. OF TR 151
 STATION: 353+17



HORZ. DATUM: NAD83(2011) GEOID: 2012A
 GRID: NORTHING: 514520.656 EASTING: 1789050.155

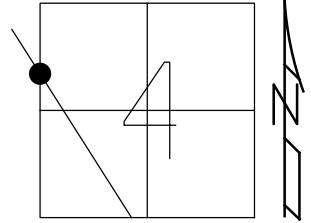
RECORD:
 FD P.K./WASHER
 7/26/00
 SET P.K./WASHER
 10-18-00, MRC
 FD P.K./WASHER
 REF21
 1-24-19
 8-19-19, JFO
 SET MAG/WASHER
 NEWREF21
 11/23/21, DSA



O.D.O.T. DISTRICT 2 SURVEY OFFICE (USE ONLY)

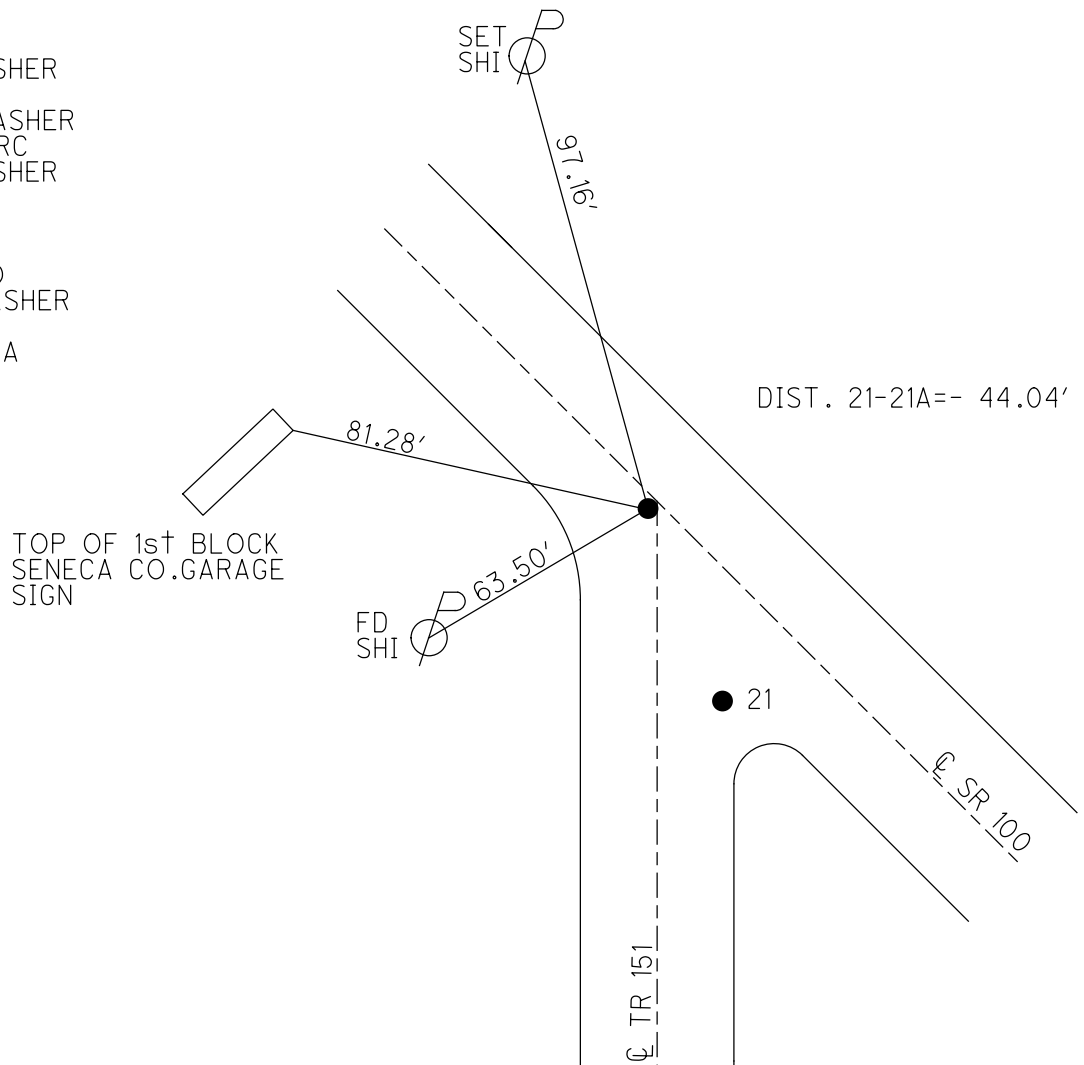
PERSONNEL	REFERENCE NO. <u>21 A</u>	SHEET <u>29</u> OF <u>46</u>
NOTES <u>RHOADES</u>	DATE <u>7/12/21</u>	ROUTE <u>SR 100</u>
H.C. <u>AUBLE</u>	WEATHER <u>CLOUDY</u>	COUNTY <u>SENECA</u>
R.C. <u>NIESE</u>	TEMP. <u>72°</u>	TOWNSHIP <u>EDEN</u>
		SECTION <u>4</u>
DWG BY <u>WHITAKER</u>	PID <u>95778</u>	T <u>1</u> N R <u>15</u> E

TYPE MONUMENT MAG/WASHER
 ON SURFACE - ~~BELOW~~ ON _____
 OFFSET ℄ PAVEMENT 1.0' LT : ~~RT~~
11.7' TO ~~RT~~ EDGE PAVEMENT
 STATION: 353+75



HORZ.DATUM: NAD83(2011) GEOID: 2012A
 GRID: NORTHING: 514563.420 EASTING: 1789039.579

RECORD:
 FD P.K./WASHER
 7/26/00
 SET P.K./WASHER
 10-18-00, MRC
 FD P.K./WASHER
 2" DOWN
 REFA21
 1-24-19
 8-19-19, JFO
 SET MAG/WASHER
 NEWREFA21
 11/23/21, DSA



O.D.O.T. DISTRICT 2 SURVEY OFFICE (USE ONLY)

PERSONNEL

REFERENCE NO. 22

SHEET 30 OF 46

NOTES RHOADES

DATE 5/26/17

ROUTE SR 224

H.C. O'DONNELL

WEATHER CLOUDY

COUNTY SENECA

R.C. CARSON

TEMP. 63°

TOWNSHIP CLINTON

DWG BY MILLER

PID 102819

SECTION 32

T 2 N R 15 E

TYPE MONUMENT MAG/WASHER

ON SURFACE - ~~BELOW~~ ON

OFFSET ☑ PAVEMENT ON LT : RT

- TO - EDGE PAVEMENT

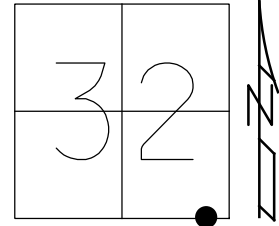
STATION: 367+78.8 REC

HORZ.DATUM: NAD83 (2011)

GEOID: (2012A)

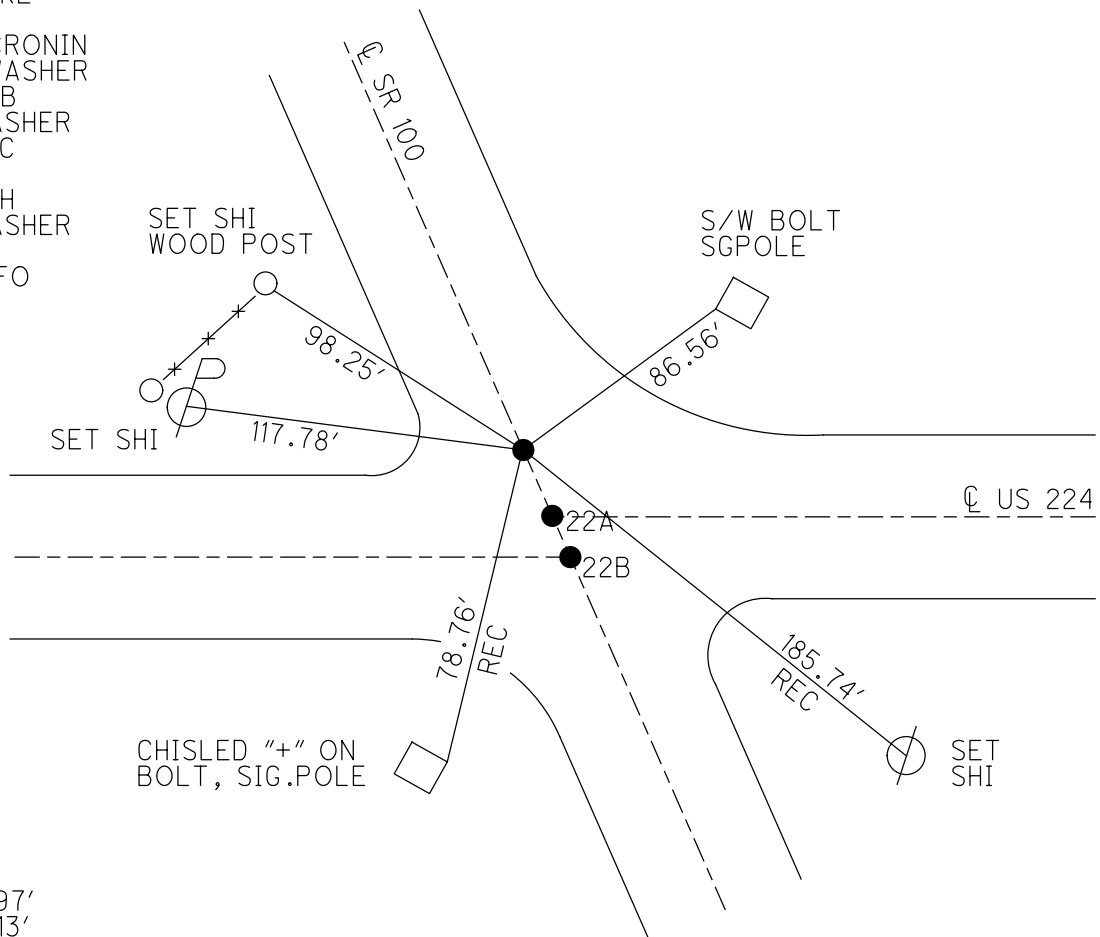
GRID: NORTHING: 515827.359

EASTING: 1788402.382



NOTE: REF 48 SR 224

RECORD: TWP. LINE
 STA. 367+78.8
 FD R.R. SPIKE
 OVER STONE
 FD R.R.SPIKE
 3" DOWN
 11/12/86, CRONIN
 SET MAG/WASHER
 8-18-04, MB
 FD MAG/WASHER
 1-15-13, SDC
 REF48
 1-16-13, DCH
 FD MAG/WASHER
 REF48
 5-26-17, JFO



DIST.
 22-49= 32.97'
 49-49A= 8.13'

O.D.O.T. DISTRICT 2 SURVEY OFFICE (USE ONLY)

PERSONNEL _____ REFERENCE NO. 23 SHEET 31 OF 46

NOTES RHOADES DATE 7/9/21 ROUTE SR 100
 H.C. AUBLE WEATHER CLOUDY COUNTY SENECA
 R.C. NIESE TEMP. 69° TOWNSHIP CLINTON
 SECTION 32

DWG BY WHITAKER PID 95778 T 2 N R 15 E

TYPE MONUMENT MAG/WASHER

ON SURFACE - ~~BELOW~~ ON _____

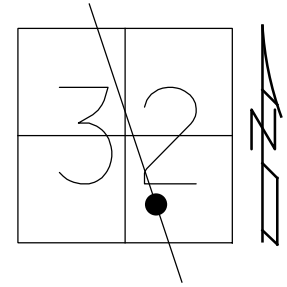
OFFSET \odot PAVEMENT ON _____ LT : RT

10.2' TO LT EDGE PAVEMENT

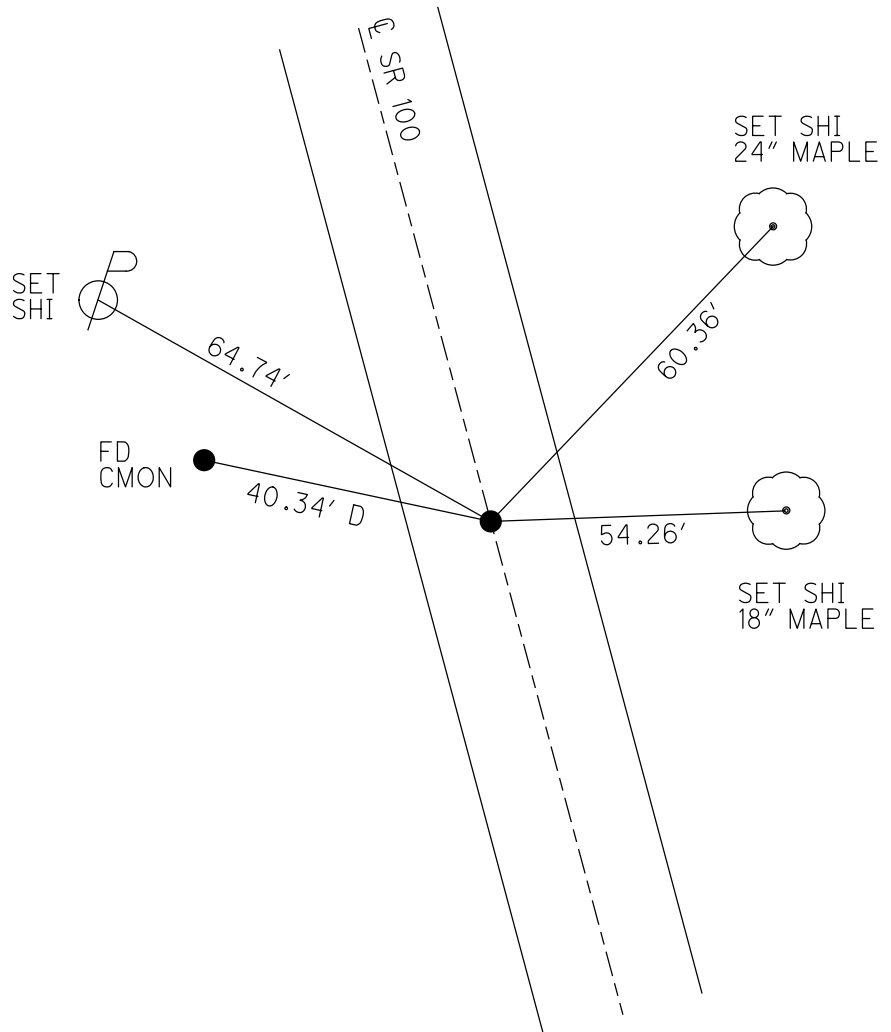
STATION: 387+09

HORZ.DATUM: NAD83(2011) GEOID: 2012A

GRID: NORTHING: 517548.613 EASTING: 1787535.965



RECORD:
 SLM.388+75.47±
 FD P.K./WASHER
 ATOP R.R. SPIKE
 FD P.K./WASHER
 7/26/00
 SET P.K./WASHER
 10/19/00, MC
 FD P.K. NAIL
 REF23
 2-14-19
 8-19-19, JFO
 SET MAG/WASHER
 REF23
 11/19/21, DSA



O.D.O.T. DISTRICT 2 SURVEY OFFICE (USE ONLY)

PERSONNEL	REFERENCE NO. <u>24</u>	SHEET <u>32</u> OF <u>46</u>
NOTES <u>RHOADES</u>	DATE <u>7/9/21</u>	ROUTE <u>SR 100</u>
H.C. <u>AUBLE</u>	WEATHER <u>CLOUDY</u>	COUNTY <u>SENECA</u>
R.C. <u>NIESE</u>	TEMP. <u>69°</u>	TOWNSHIP <u>CLINTON</u>
		SECTION <u>32</u>
DWG BY <u>WHITAKER</u>	PID <u>95778</u>	T <u>2</u> N R <u>15</u> E

TYPE MONUMENT P.K. NAIL

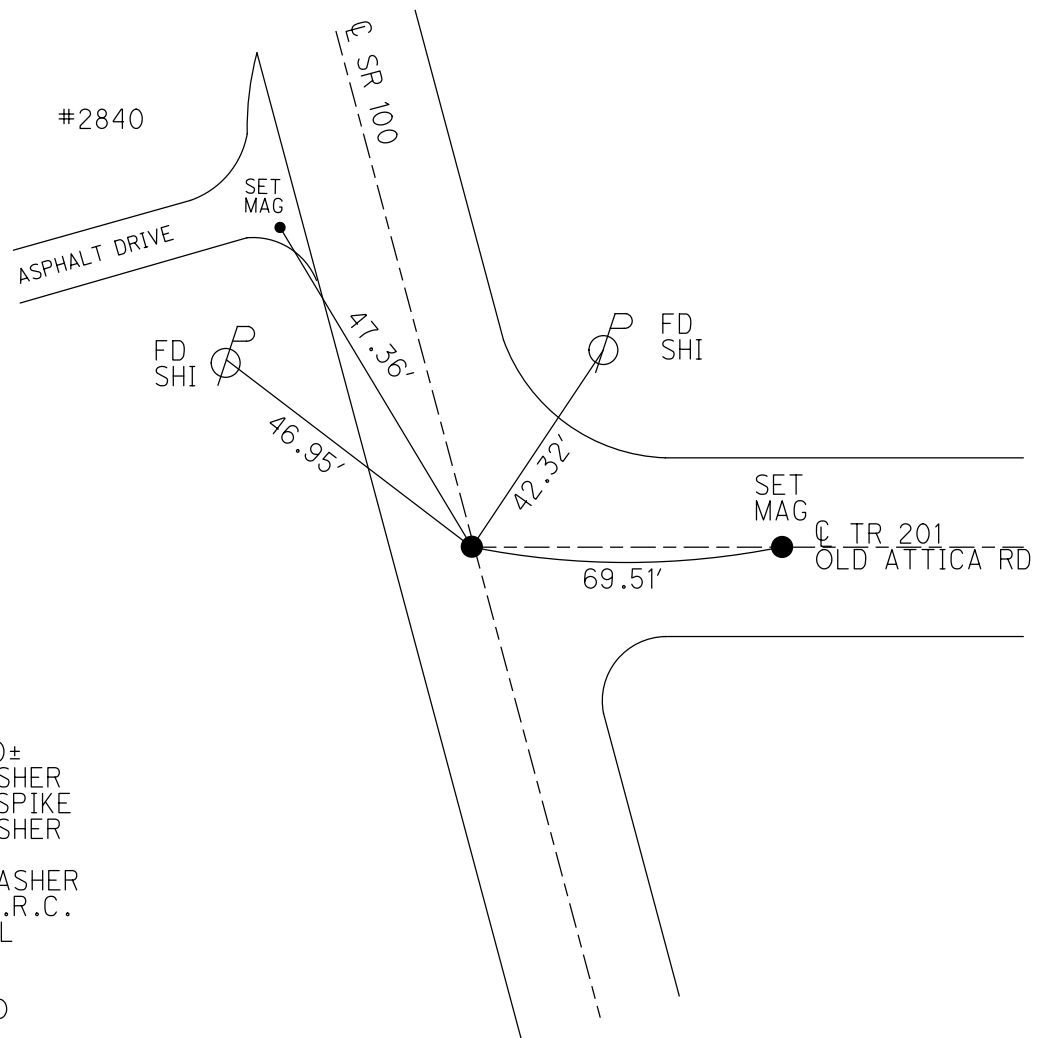
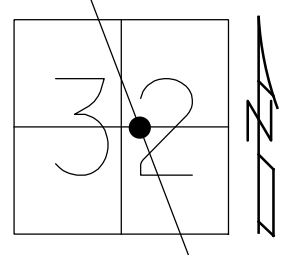
ON SURFACE - ~~BELOW~~ ON

OFFSET Q PAVEMENT ON LT : RT
9.5' TO LT EDGE PAVEMENT

STATION: 397+39

HORZ. DATUM: NAD83(2011) GEOID: 2012A

GRID: NORTHING: 518467.742 EASTING: 1787067.475

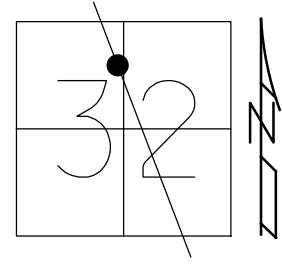


RECORD:
 SLM. 399+10±
 FD P.K./WASHER
 ATOP R.R. SPIKE
 FD P.K./WASHER
 7/26/00
 SET P.K.+WASHER
 10-19-00, M.R.C.
 FD P.K. NAIL
 REF 24
 2-14-19
 8-19-19, JFO

O.D.O.T. DISTRICT 2 SURVEY OFFICE (USE ONLY)

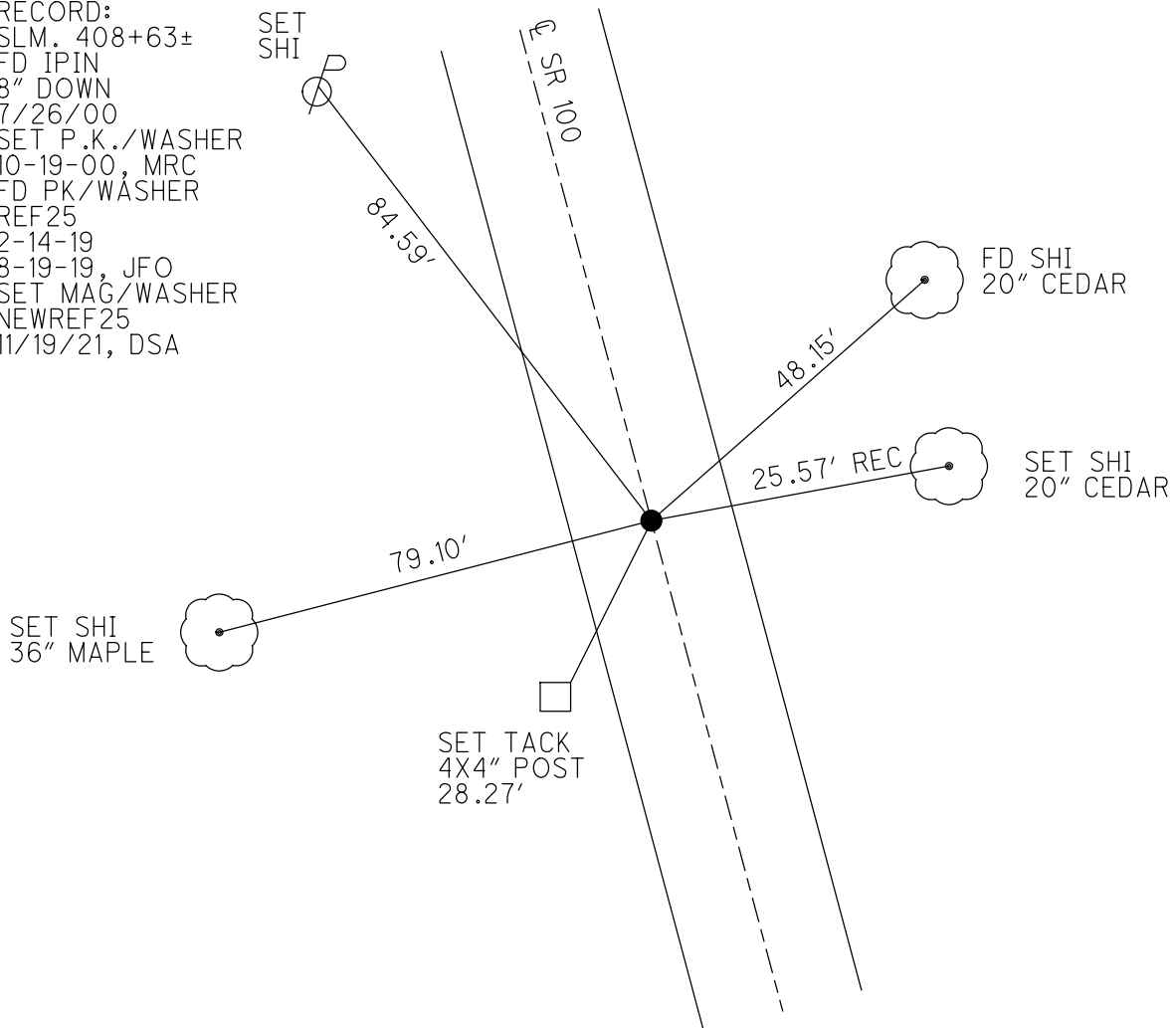
PERSONNEL _____ REFERENCE NO. 25 SHEET 33 OF 46
 NOTES RHOADES DATE 7/9/21 ROUTE SR 100
 H.C. AUBLE WEATHER CLOUDY COUNTY SENECA
 R.C. NIESE TEMP. 69° TOWNSHIP CLINTON
 DWG BY WHITAKER PID 95778 SECTION 32
 T 2 N R 15 E

TYPE MONUMENT MAG/WASHER
 ON SURFACE - ~~BELOW~~ ON _____
 OFFSET \varnothing PAVEMENT ON LT : ~~RT~~
10' TO LT EDGE PAVEMENT
 STATION: 406+88



HORZ.DATUM: NAD83(2011) GEOID: 2012A
 GRID: NORTHING: 519314.054 EASTING: 1786635.598

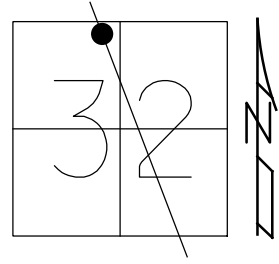
RECORD:
 SLM. 408+63±
 FD IPIN
 8" DOWN
 7/26/00
 SET P.K./WASHER
 10-19-00, MRC
 FD PK/WASHER
 REF25
 2-14-19
 8-19-19, JFO
 SET MAG/WASHER
 NEWREF25
 11/19/21, DSA



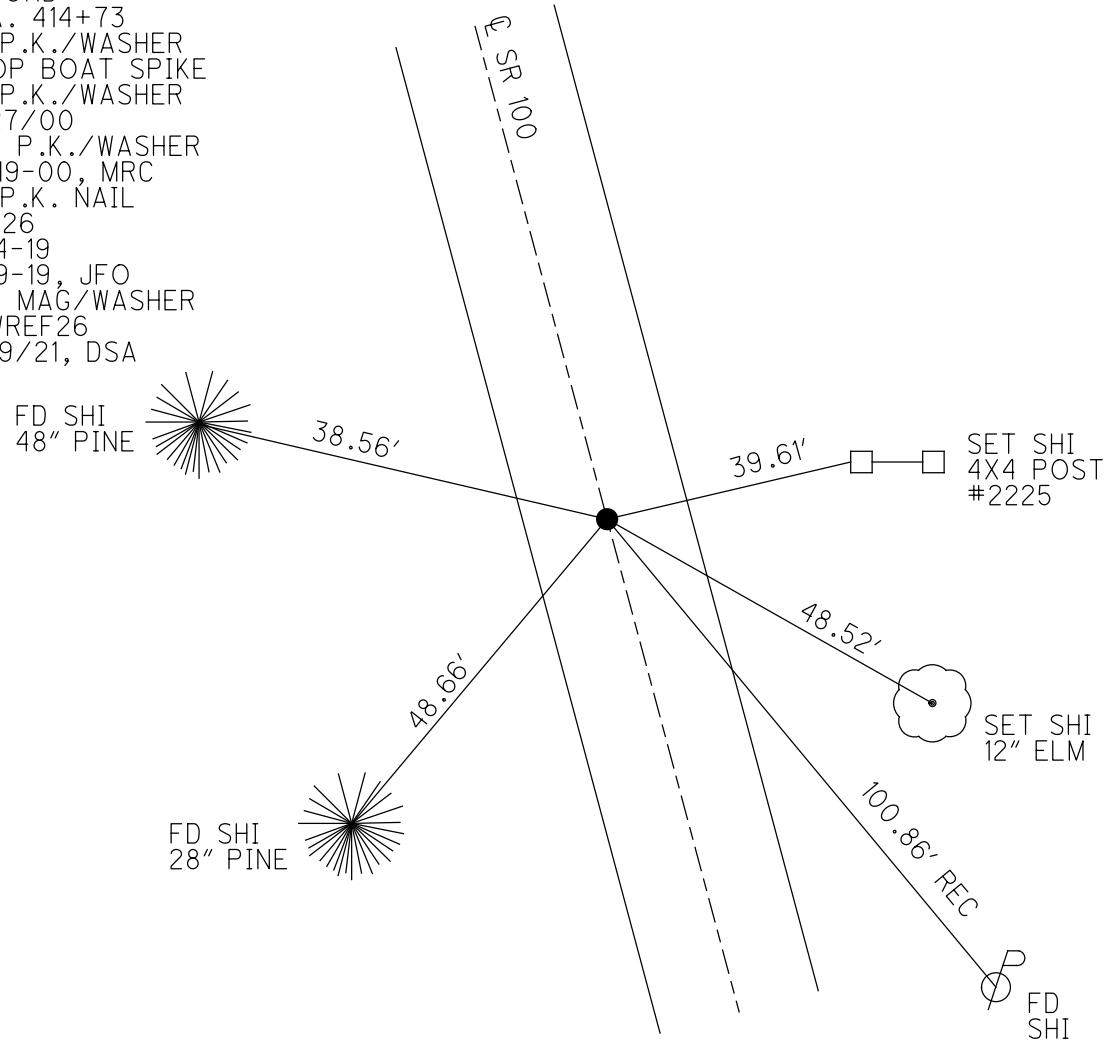
O.D.O.T. DISTRICT 2 SURVEY OFFICE (USE ONLY)

PERSONNEL _____ REFERENCE NO. 26 SHEET 34 OF 46
 NOTES RHOADES DATE 7/9/21 ROUTE SR 100
 H.C. AUBLE WEATHER CLOUDY COUNTY SENECA
 R.C. NIESE TEMP. 69° TOWNSHIP CLINTON
 DWG BY WHITAKER PID 107060 SECTION 32
 T 2 N R 15 E

TYPE MONUMENT MAG/WASHER
 ON SURFACE - ~~BELOW~~ ON _____
 OFFSET \varnothing PAVEMENT 8" ~~±~~ : RT
9.2' TO RT EDGE PAVEMENT
 STATION: 412+98
 HORZ.DATUM: NAD83(2011) GEOID: 2012A
 GRID: NORTHING: 519857.408 EASTING: 1786358.912



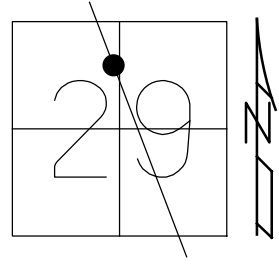
RECORD:
 STA. 414+73
 FD P.K./WASHER
 ATOP BOAT SPIKE
 FD P.K./WASHER
 7/27/00
 SET P.K./WASHER
 10-19-00, MRC
 FD P.K. NAIL
 REF26
 2-14-19
 8-19-19, JFO
 SET MAG/WASHER
 NEWREF26
 11/19/21, DSA



O.D.O.T. DISTRICT 2 SURVEY OFFICE (USE ONLY)

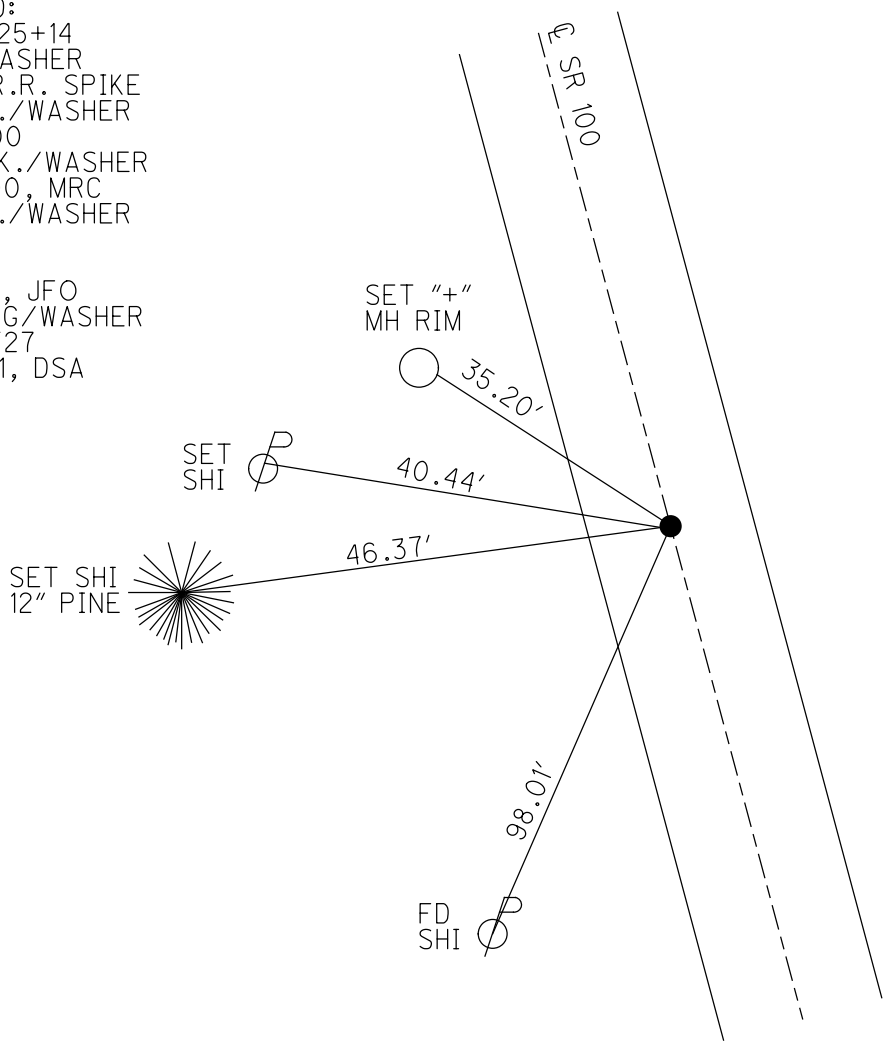
PERSONNEL _____ REFERENCE NO. 27 SHEET 35 OF 46
 NOTES RHOADES DATE 7/9/21 ROUTE SR 100
 H.C. AUBLE WEATHER CLOUDY COUNTY SENECA
 R.C. NIESE TEMP. 69° TOWNSHIP CLINTON
 DWG BY WHITAKER PID 95778 SECTION 29
 T 2 N R 15 E

TYPE MONUMENT MAG/WASHER
 ON SURFACE - ~~BELOW~~ ON _____
 OFFSET \varnothing PAVEMENT 1' LT : ~~RT~~
8.8' TO LT EDGE PAVEMENT
 STATION: 425+14



HORZ.DATUM: NAD83(2011) GEOID: 2012A
 GRID: NORTHING: 520784.140 EASTING: 1785886.003

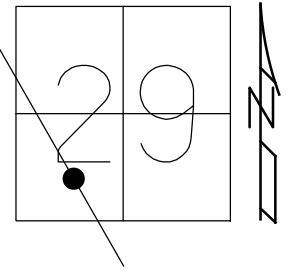
RECORD:
 STA. 425+14
 P.K./WASHER
 ATOP R.R. SPIKE
 FD P.K./WASHER
 7/27/00
 SET P.K./WASHER
 10-19-00, MRC
 FD P.K./WASHER
 REF27
 2-14-19
 8-19-19, JFO
 SET MAG/WASHER
 NEWREF27
 11/18/21, DSA



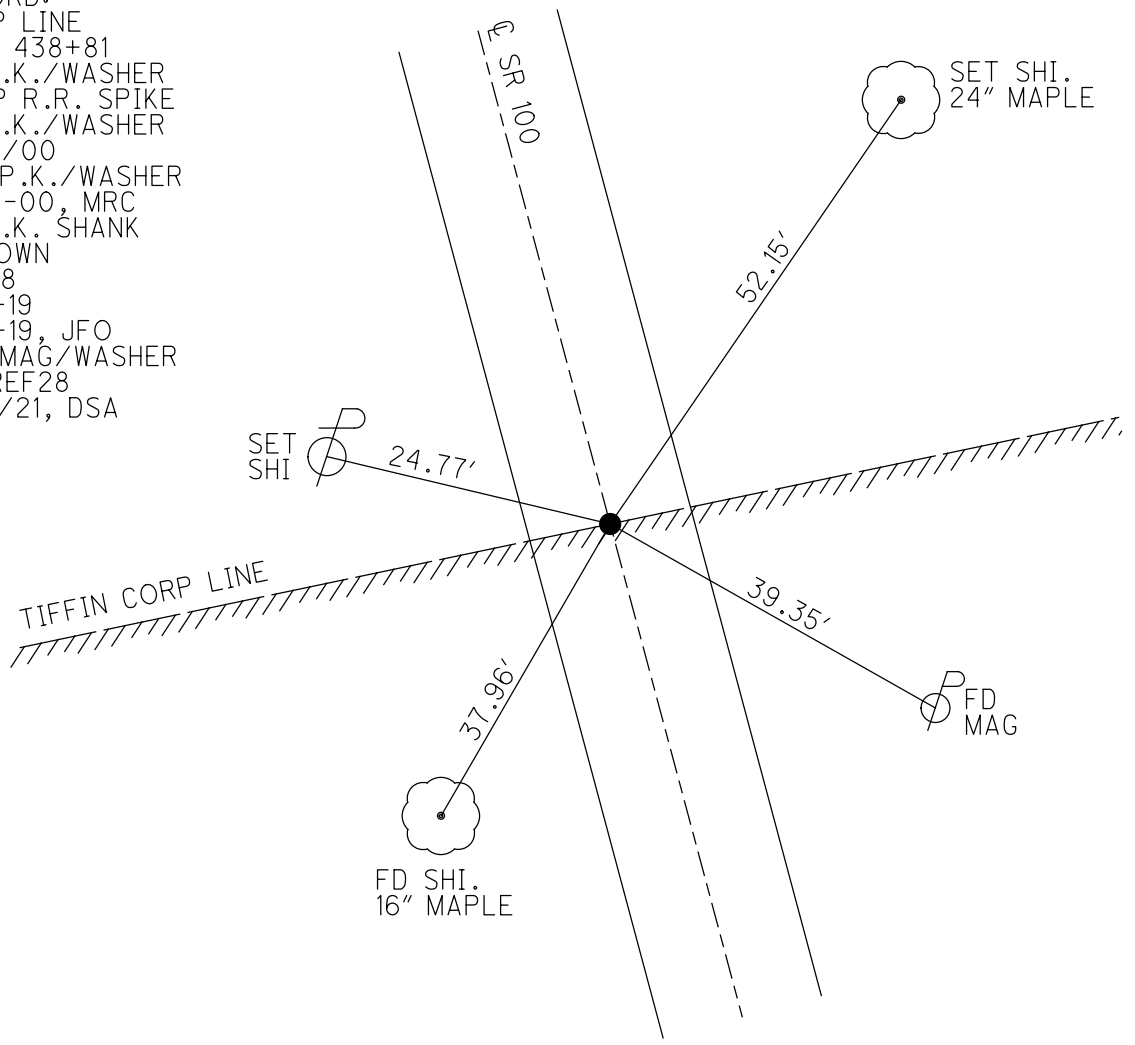
O.D.O.T. DISTRICT 2 SURVEY OFFICE (USE ONLY)

PERSONNEL _____ REFERENCE NO. 28 SHEET 36 OF 46
 NOTES RHOADES DATE 7/9/21 ROUTE SR 100
 H.C. AUBLE WEATHER CLOUDY COUNTY SENECA
 R.C. NIESE TEMP. 69° TOWNSHIP CLINTON
 DWG BY WHITAKER PID 95778 SECTION 29
 T 2 N R 15 E

TYPE MONUMENT MAG/WASHER
 ON SURFACE - ~~BELOW~~ ON _____
 OFFSET \varnothing PAVEMENT 1.0' LT : ~~RT~~
8.0' TO LT EDGE PAVEMENT
 STATION: 438+78
 HORZ.DATUM: NAD83(2011) GEOID: 2012A
 GRID: NORTHING: 522001.761 EASTING: 1785271.487



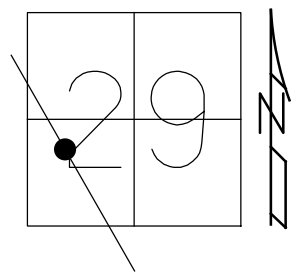
RECORD:
 CORP LINE
 STA. 438+81
 FD P.K./WASHER
 ATOP R.R. SPIKE
 FD P.K./WASHER
 7/27/00
 SET P.K./WASHER
 10-19-00, MRC
 FD P.K. SHANK
 3" DOWN
 REF28
 2-14-19
 8-19-19, JFO
 SET MAG/WASHER
 NEWREF28
 11/18/21, DSA



O.D.O.T. DISTRICT 2 SURVEY OFFICE (USE ONLY)

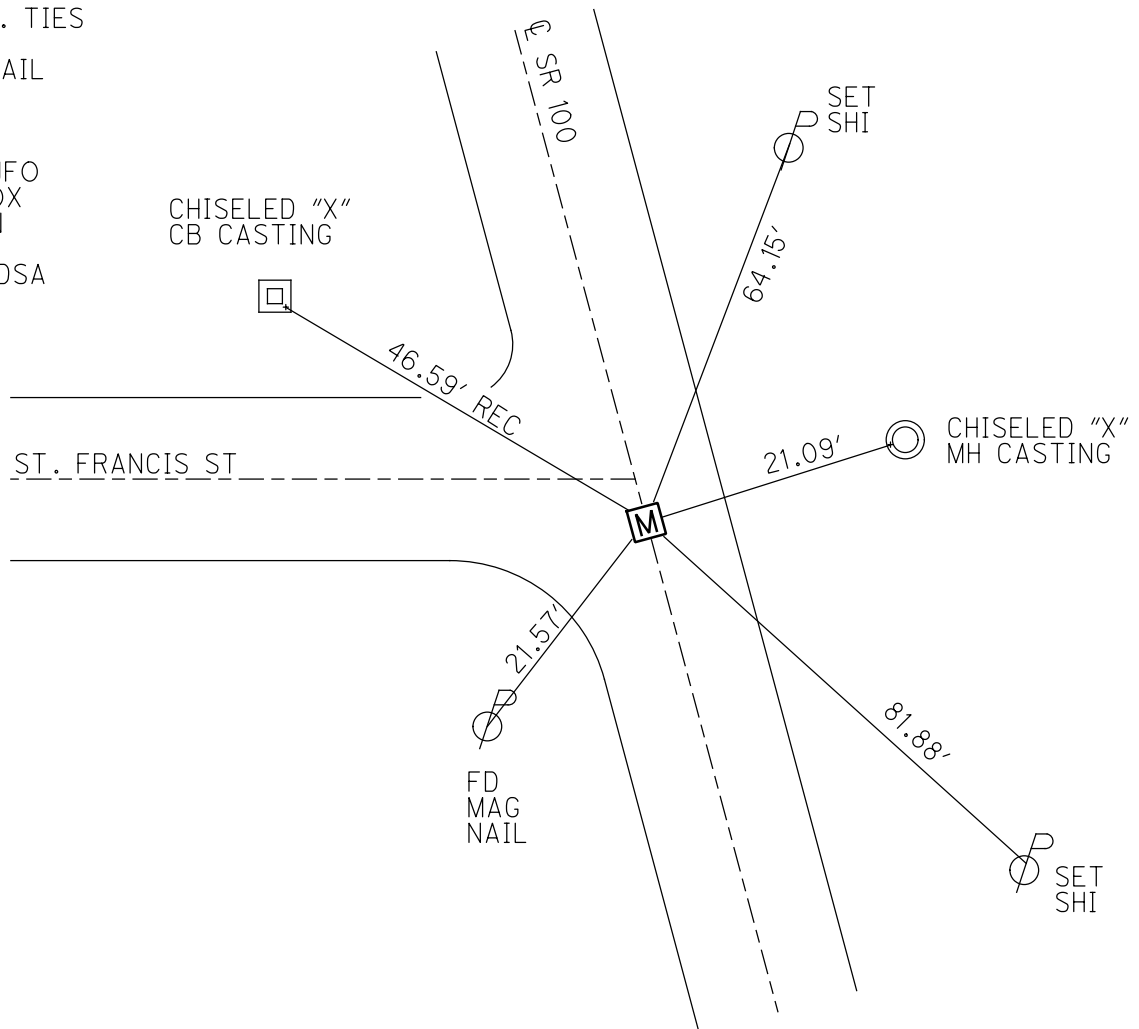
PERSONNEL _____ REFERENCE NO. 29 SHEET 37 OF 46
 NOTES RHOADES DATE 7/9/21 ROUTE SR 100
 H.C. AUBLE WEATHER CLOUDY COUNTY SENECA
 R.C. NIESE TEMP. 69° TOWNSHIP CLINTON
 DWG BY WHITAKER PID 95778 SECTION 29
 T 2 N R 15 E

TYPE MONUMENT MONBOX W/ 1" IPIN
 ON SURFACE - BELOW ON
 OFFSET \odot PAVEMENT ON LT : RT
-- TO -- EDGE PAVEMENT
 STATION: 440+35



HORZ.DATUM: NAD83(2011) GEOID: 2012A
 GRID: NORTHING: 522187.329 EASTING: 1785180.176

RECORD:
 DGL ENGR. TIES
 12/14/18
 FD P.K. NAIL
 4" DOWN
 REF29
 2-14-19
 8-14-19, JFO
 FD MONBOX
 W/ 1" IPIN
 NEWREF29
 11/18/21, DSA



O.D.O.T. DISTRICT 2 SURVEY OFFICE (USE ONLY)

PERSONNEL

REFERENCE NO. 29 A

SHEET 38 OF 46

NOTES AUBLE DATE 11/18/21
H.C. AUBLE WEATHER WINDY
R.C. SLUSHER TEMP. 41°

ROUTE SR 100
COUNTY SENECA
TOWNSHIP CLINTON
SECTION 29
T 2 N R 15 E

DWG BY WHITAKER PID 95778

TYPE MONUMENT MONBOX W/ 1" IPIN

ON SURFACE - BELOW ON

OFFSET \varnothing PAVEMENT ON LT : RT

-- TO -- EDGE PAVEMENT

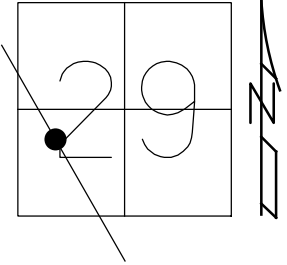
STATION: 443+52

HORZ.DATUM: NAD83 2011

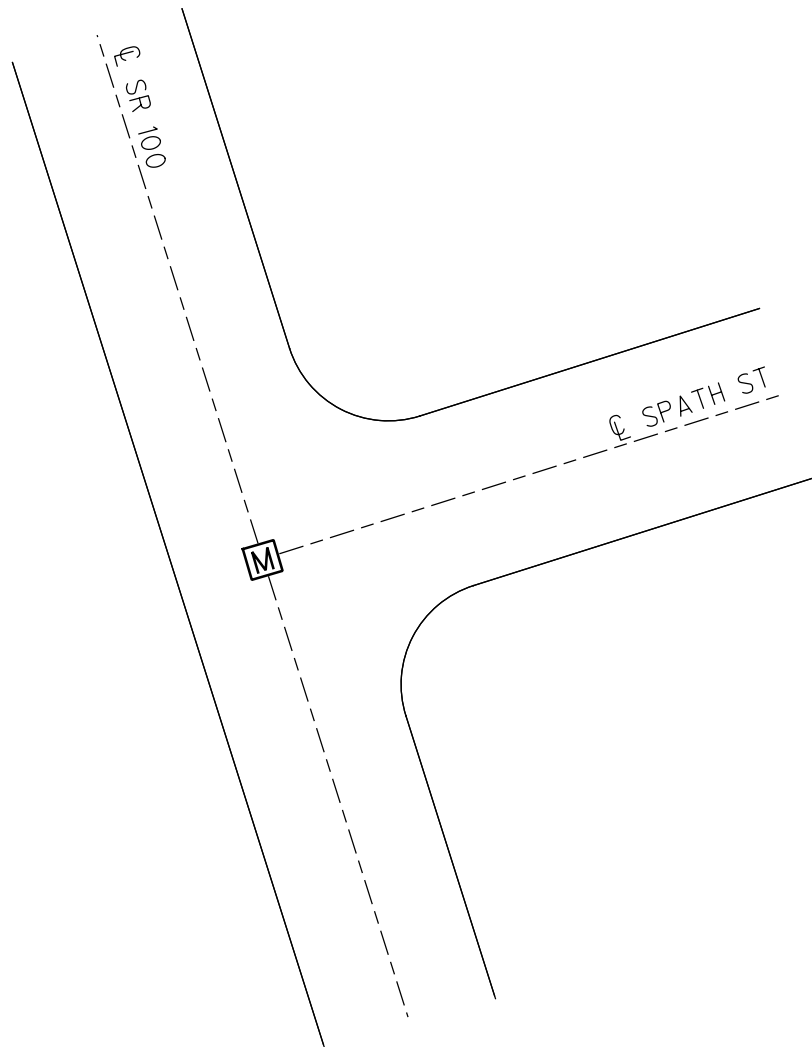
GEOID: NAVD88 2012A

GRID: NORTHING: 522514.747

EASTING: 1785017.779



RECORD:
FD MONBOX
W/ 1" IPIN
NEWREFA29
11/18/21, DSA



O.D.O.T. DISTRICT 2 SURVEY OFFICE (USE ONLY)

PERSONNEL

REFERENCE NO. 30

SHEET 39 OF 46

NOTES RHOADES

DATE 7/9/21

ROUTE SR 100

H.C. AUBLE

WEATHER CLOUDY

COUNTY SENECA

R.C. NIESE

TEMP. 69°

TOWNSHIP CLINTON

DWG BY WHITAKER

PID 95778

SECTION 29

T 2 N R 15 E

TYPE MONUMENT MAG/WASHER

ON SURFACE - ~~BELOW~~ ON

OFFSET 0 PAVEMENT LT : RT

- TO - EDGE PAVEMENT

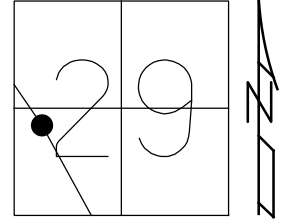
STATION: 453+80.81

HORZ.DATUM: NAD83(2011)

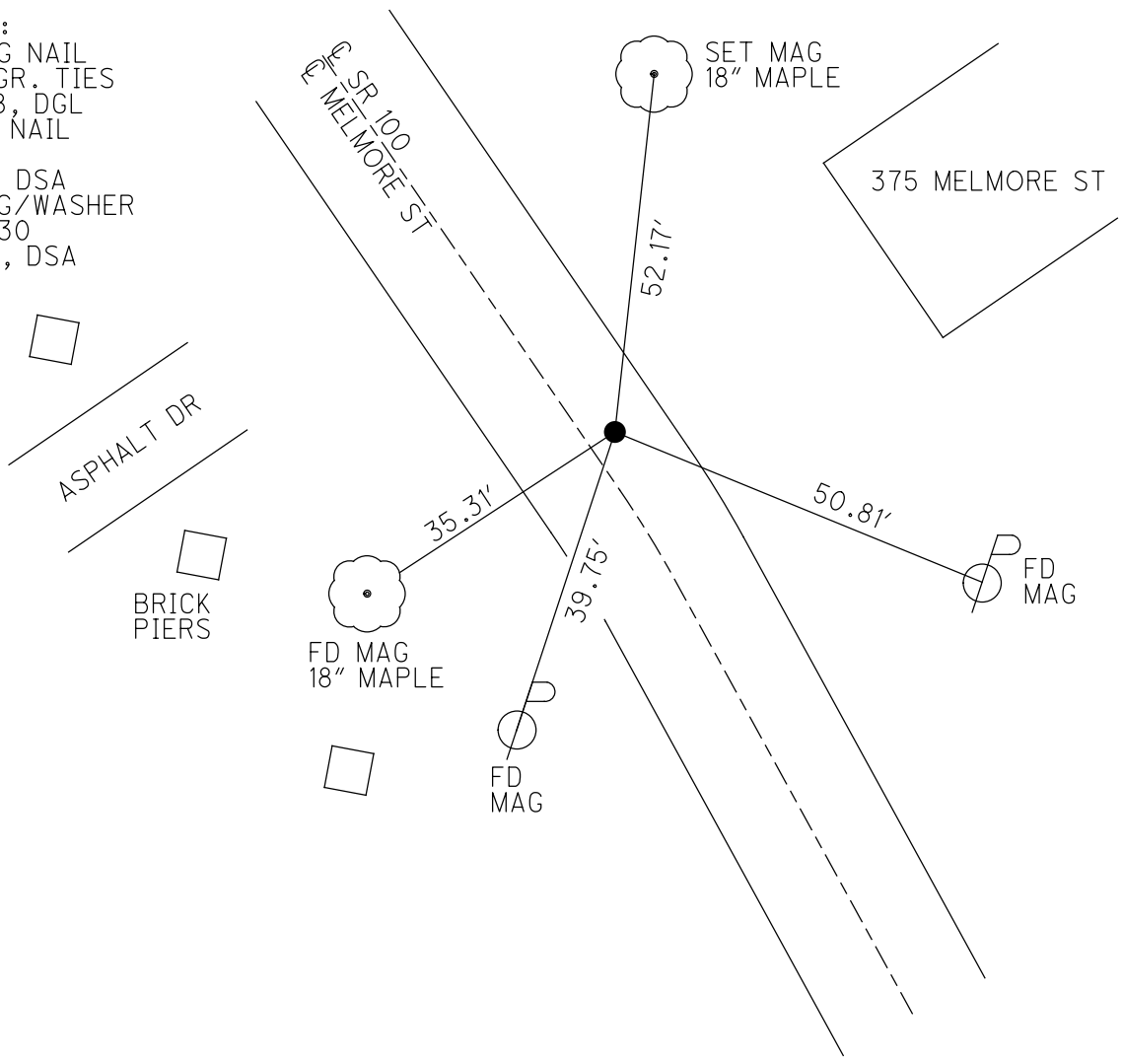
GEOID: 2012A

GRID: NORTHING: 523392.765

EASTING: 1784572.121



RECORD:
 SET MAG NAIL
 DGL ENGR. TIES
 12/14/18, DGL
 FD MAG NAIL
 REF30
 7/9/21, DSA
 SET MAG/WASHER
 NEWREF30
 11/18/21, DSA

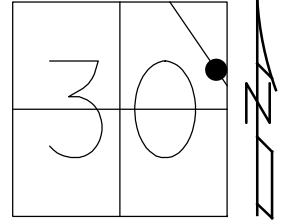


O.D.O.T. DISTRICT 2 SURVEY OFFICE (USE ONLY)

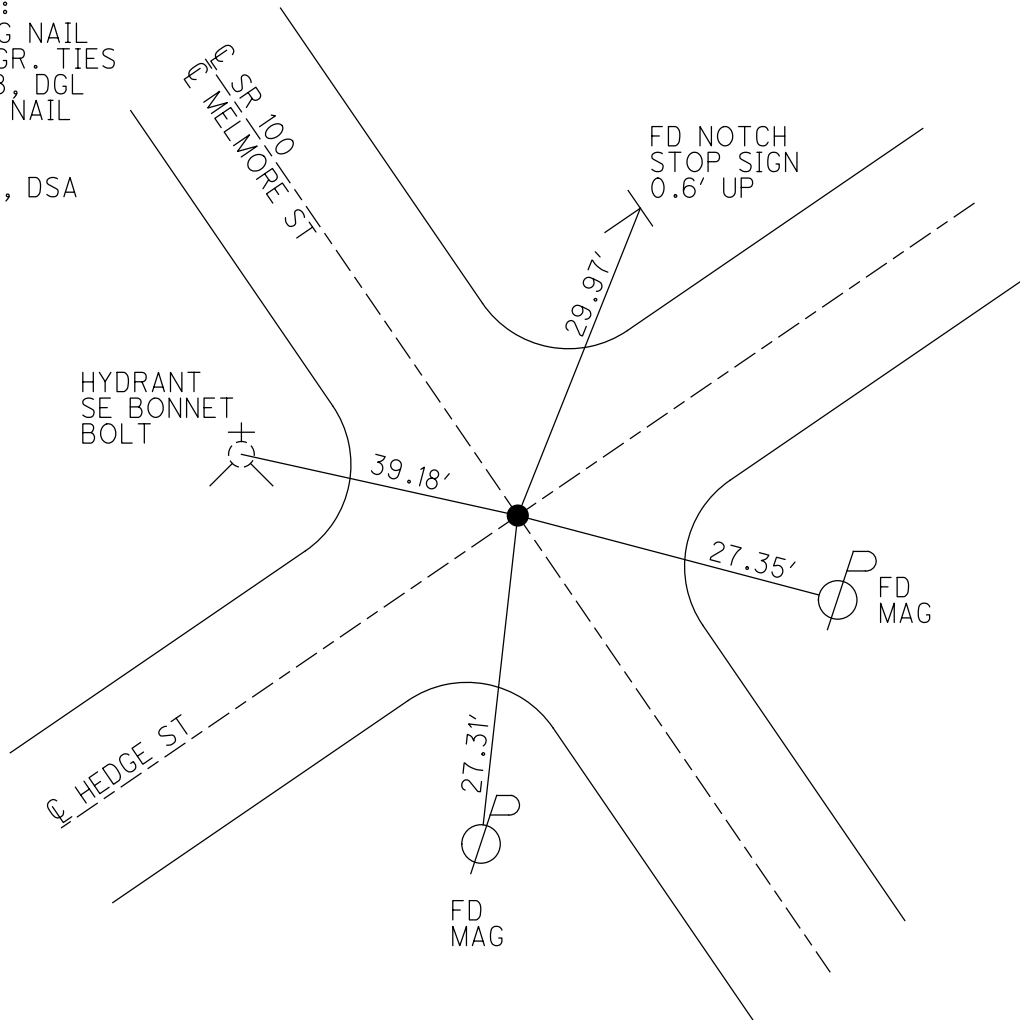
PERSONNEL _____ REFERENCE NO. 31 SHEET 40 OF 46
 NOTES RHOADES DATE 7/9/21 ROUTE SR 100
 H.C. AUBLE WEATHER CLOUDY COUNTY SENECA
 R.C. NIESE TEMP. 69° TOWNSHIP CLINTON
 DWG BY WHITAKER PID 95778 SECTION 29
 T 2 N R 15 E

TYPE MONUMENT MAG NAIL
 ON SURFACE - ~~BELOW~~ ON
 OFFSET \varnothing PAVEMENT ON LT : RT
- TO - EDGE PAVEMENT
 STATION: 470+64.37

HORZ.DATUM: NAD83(2011) GEOID: 2012A
 GRID: NORTHING: 524738.251 EASTING: 1783560.384



RECORD:
 SET MAG NAIL
 DGL ENGR. TIES
 12/14/18, DGL
 FD MAG NAIL
 REF31
 7/9/21
 11/18/21, DSA



O.D.O.T. DISTRICT 2 SURVEY OFFICE (USE ONLY)

PERSONNEL _____

REFERENCE NO. 32

SHEET 40 OF 45

NOTES SEA

DATE 12/14/18

ROUTE SR 100

H.C. SEA

WEATHER CLOUDY

COUNTY SENECA

R.C. LL

TEMP. 45°

TOWNSHIP CLINTON

DWG BY NIESE PID 95778

SECTION 19

T 2 N R 15 E

TYPE MONUMENT MONBOX W/ STONE

ON SURFACE - ~~BELOW~~ ON

OFFSET \odot PAVEMENT _____ LT : RT

- TO - EDGE PAVEMENT

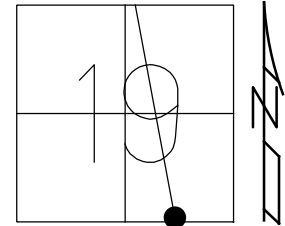
STATION: 491+56.80

HORIZ.DATUM: _____

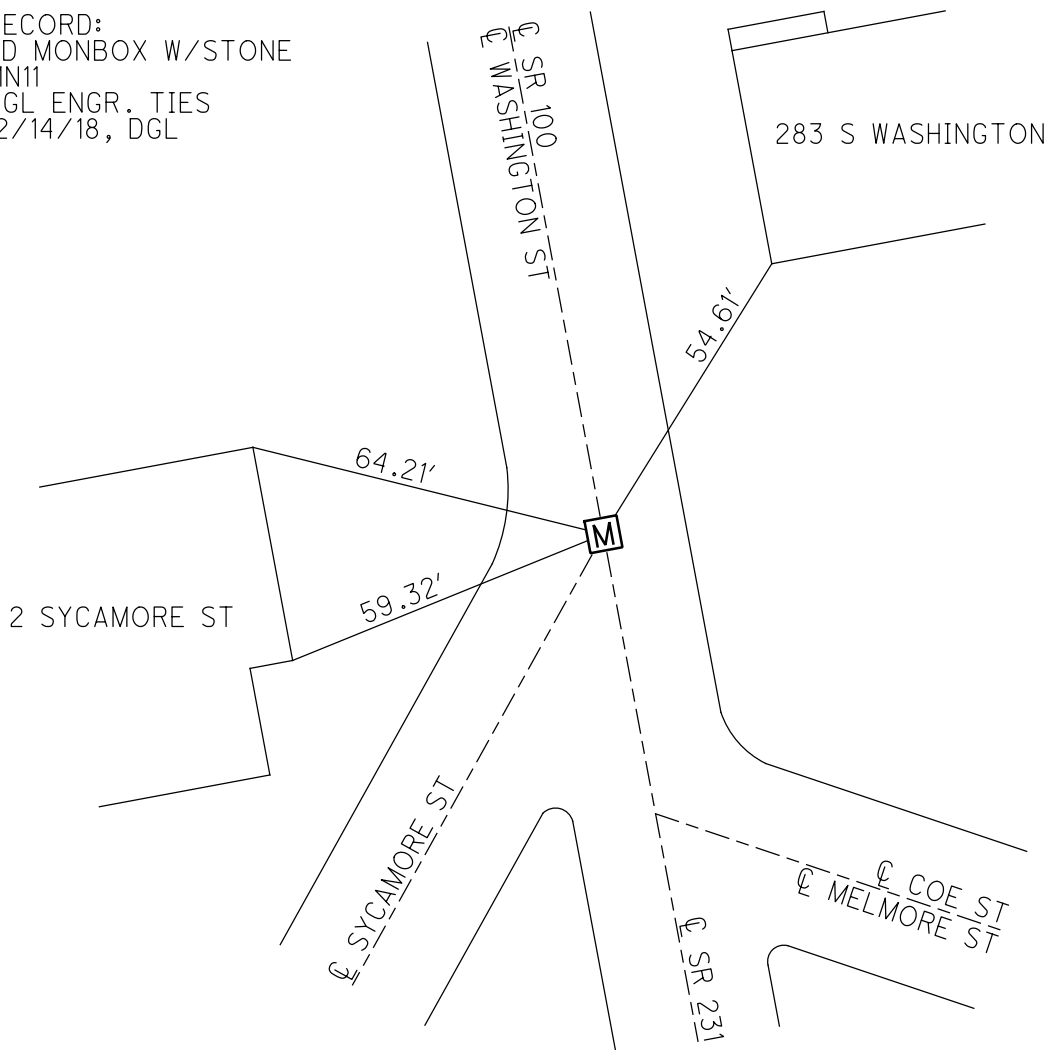
GEOID: _____

GRID: NORTHING: 526408.749

EASTING: 1782286.472



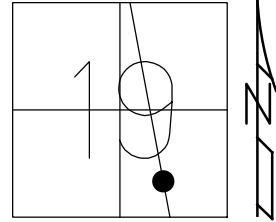
RECORD:
FD MONBOX W/STONE
MN11
DGL ENGR. TIES
12/14/18, DGL



O.D.O.T. DISTRICT 2 SURVEY OFFICE (USE ONLY)

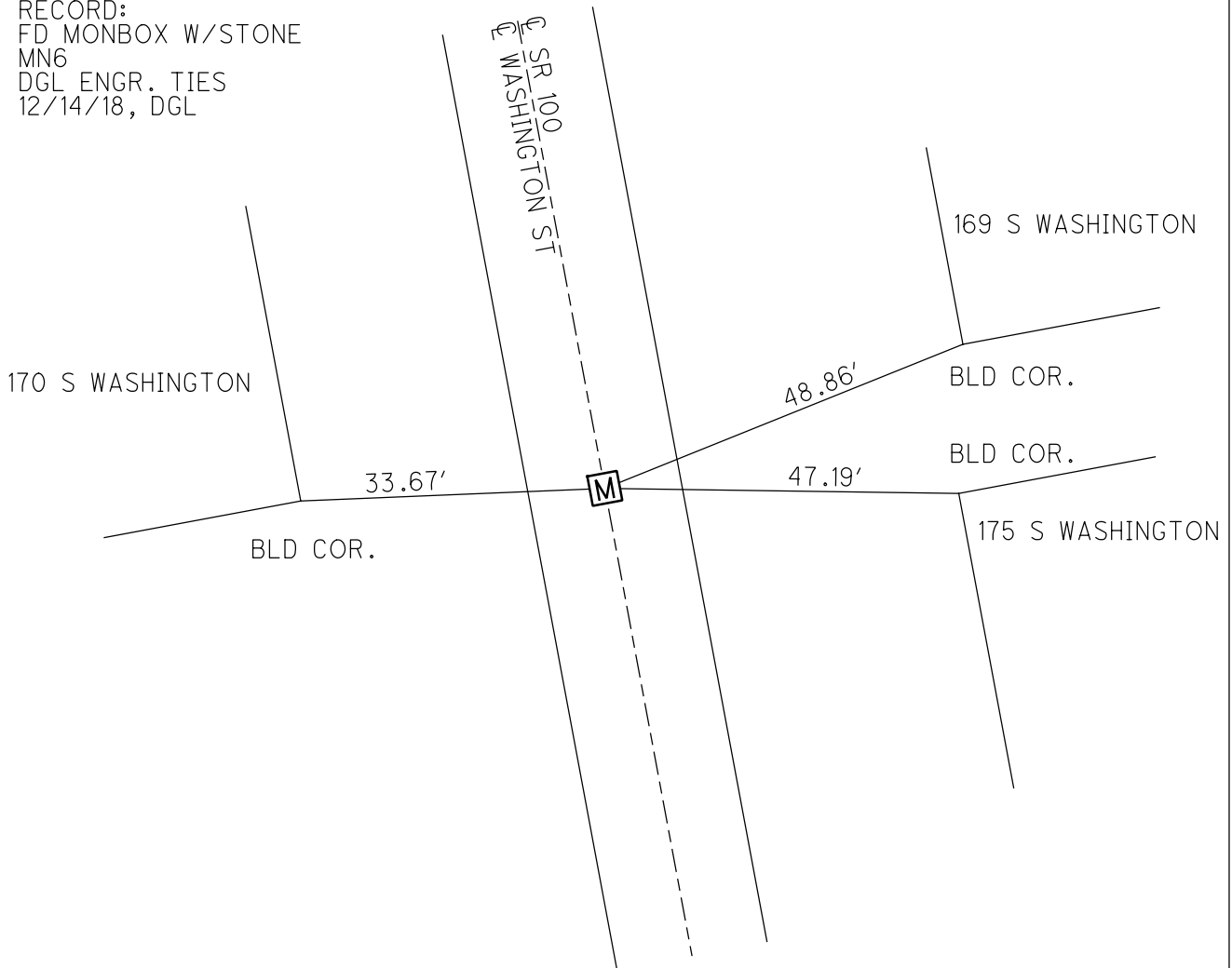
PERSONNEL _____ REFERENCE NO. 33 SHEET 41 OF 45
 NOTES SEA DATE 12/14/18 ROUTE SR 100
 H.C. SEA WEATHER CLOUDY COUNTY SENECA
 R.C. LL TEMP. 45° TOWNSHIP CLINTON
 _____ SECTION 19
 DWG BY NIESE PID 95778 T 2 N R 15 E

TYPE MONUMENT MONBOX W/ STONE
 ON SURFACE - ~~BELOW~~ ON
 OFFSET Q PAVEMENT _____ LT : RT
 _____ TO _____ EDGE PAVEMENT
 STATION: 499+25.58



HORIZ.DATUM: _____ GEOID: _____
 GRID: NORTHING: 527172.844 EASTING: 1782201.733

RECORD:
 FD MONBOX W/STONE
 MN6
 DGL ENGR. TIES
 12/14/18, DGL



O.D.O.T. DISTRICT 2 SURVEY OFFICE (USE ONLY)

PERSONNEL

REFERENCE NO. 34

SHEET 42 OF 45

NOTES SEA

DATE 12/14/18

ROUTE SR 100

H.C. SEA

WEATHER CLOUDY

COUNTY SENECA

R.C. LL

TEMP. 48°

TOWNSHIP CLINTON

SECTION 19

DWG BY NIESE PID 95778

T 2 N R 15 E

TYPE MONUMENT MONBOX W/STONE

ON SURFACE - ~~BELOW~~ ON

OFFSET \varnothing PAVEMENT _____ LT : RT

- TO - EDGE PAVEMENT

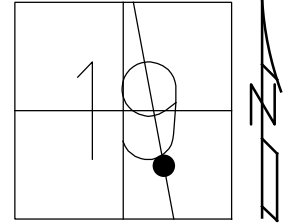
STATION: 503+24

HORIZ.DATUM: _____

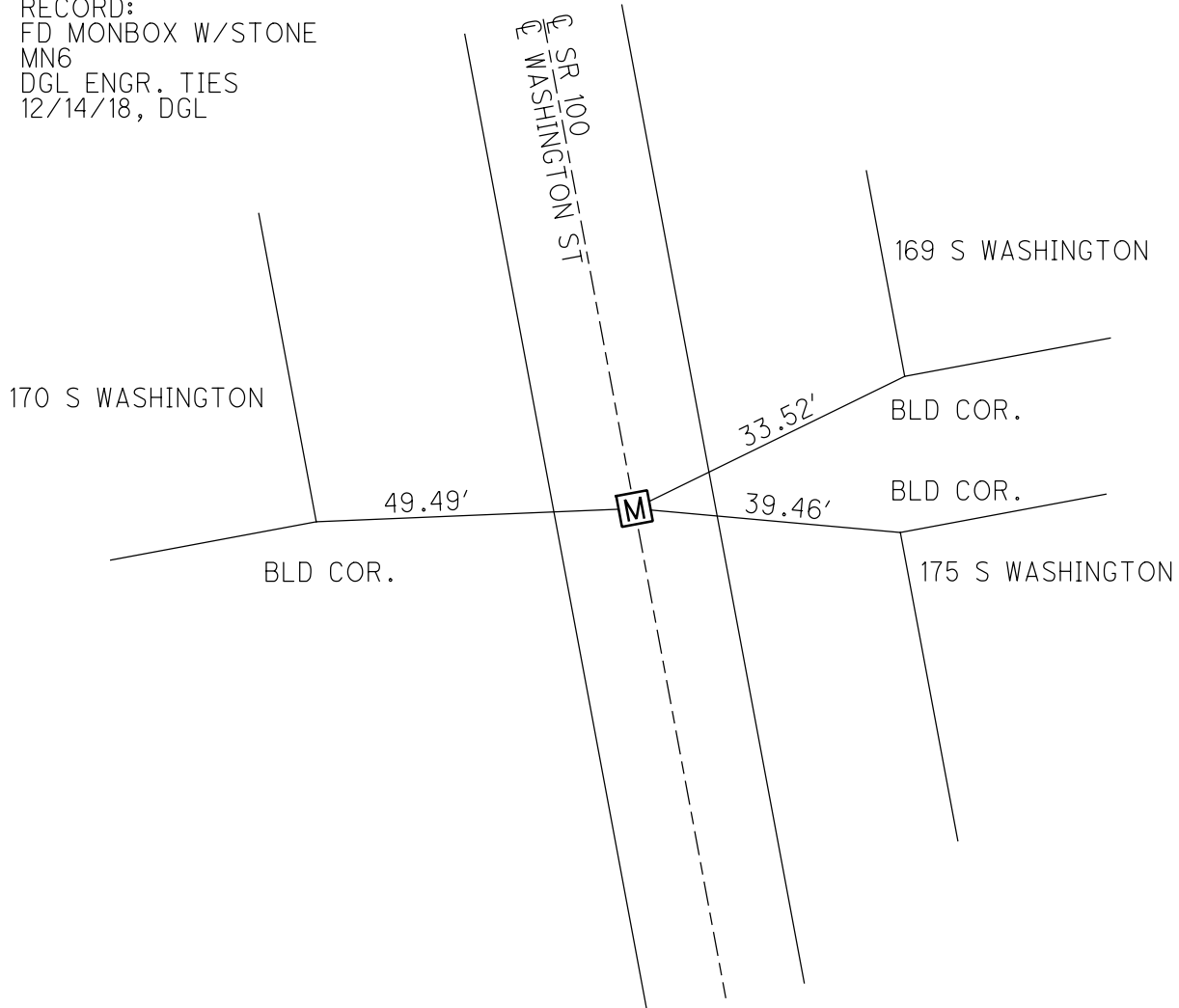
GEOID: _____

GRID: NORTHING: 527568.794

EASTING: 1782157.462



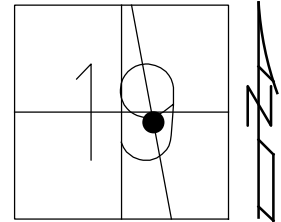
RECORD:
FD MONBOX W/STONE
MN6
DGL ENGR. TIES
12/14/18, DGL



O.D.O.T. DISTRICT 2 SURVEY OFFICE (USE ONLY)

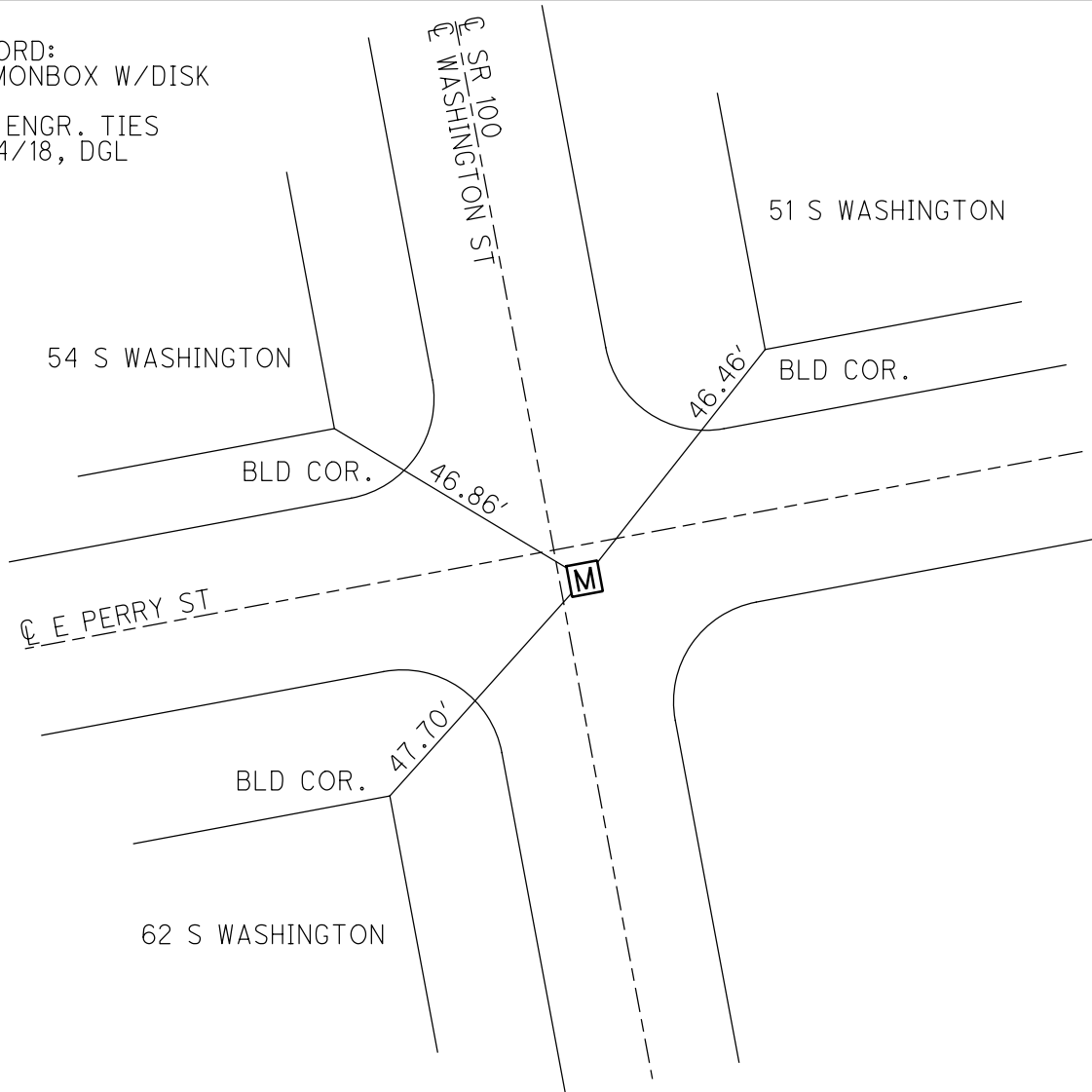
PERSONNEL _____ REFERENCE NO. 35 SHEET 43 OF 45
 NOTES SEA DATE 12/14/18 ROUTE SR 100
 H.C. SEA WEATHER CLOUDY COUNTY SENECA
 R.C. LL TEMP. 45° TOWNSHIP CLINTON
 DWG BY NIESE PID 95778 SECTION 19
 T 2 N R 15 E

TYPE MONUMENT MONBOX W/DISK
 ON SURFACE - ~~BELOW~~ ON
 OFFSET Q PAVEMENT _____ LT : RT
- TO - EDGE PAVEMENT
 STATION: 514+47.29



HORZ.DATUM: _____ GEOID: _____
 GRID: NORTHING: 528685.186 EASTING: 1782033.167

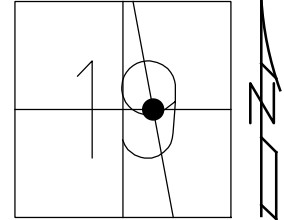
RECORD:
 FD MONBOX W/DISK
 MN3
 DGL ENGR. TIES
 12/14/18, DGL



O.D.O.T. DISTRICT 2 SURVEY OFFICE (USE ONLY)

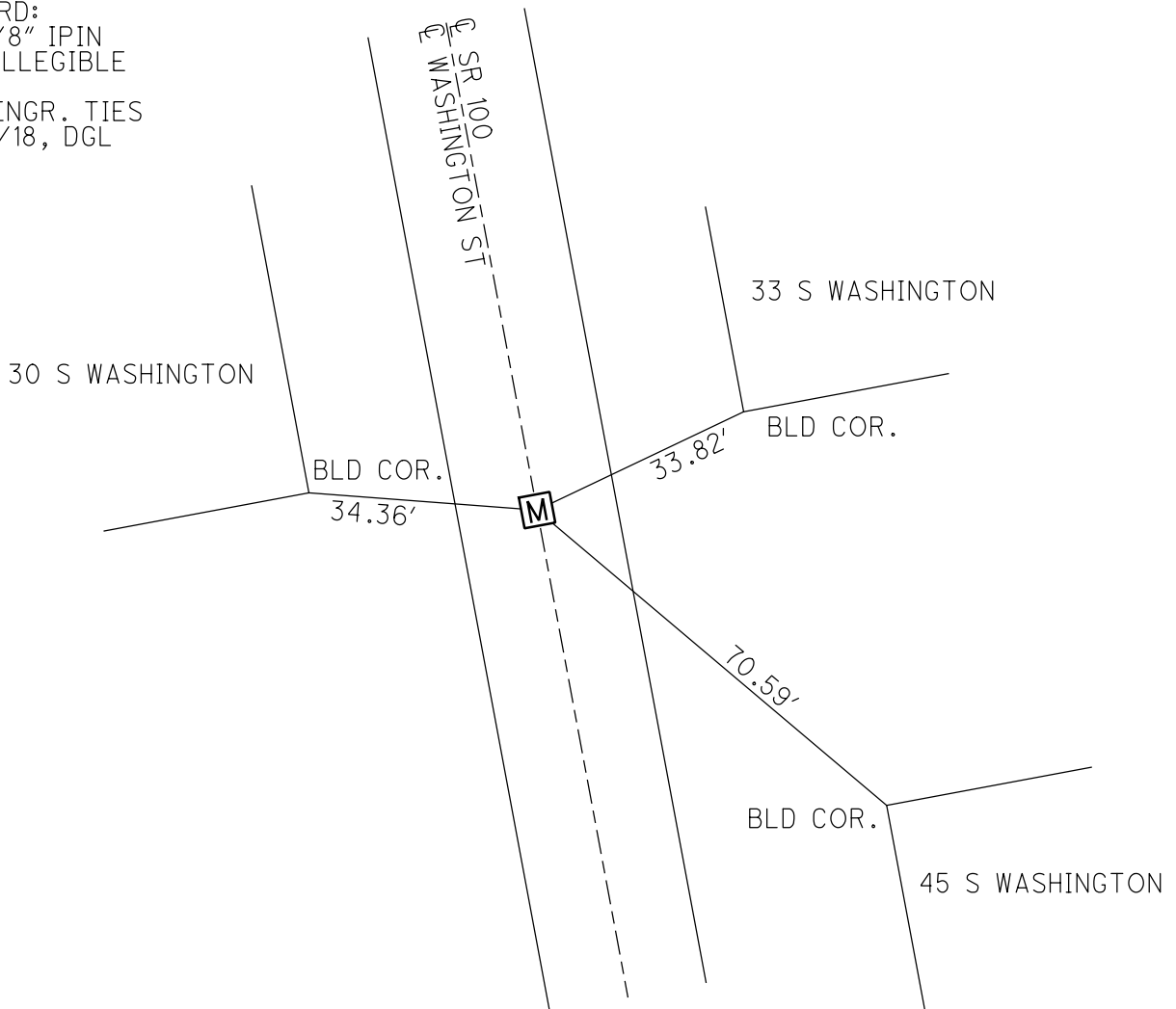
PERSONNEL _____ REFERENCE NO. 36 SHEET 44 OF 45
 NOTES SEA DATE 12/14/18 ROUTE SR 100
 H.C. SEA WEATHER CLOUDY COUNTY SENECA
 R.C. LL TEMP. 45° TOWNSHIP CLINTON
 DWG BY NIESE PID 95778 SECTION 19
 T 2 N R 15 E

TYPE MONUMENT 5/8" IPID (ILLEGIBLE)
 ON SURFACE - ~~BELOW~~ ON
 OFFSET ☉ PAVEMENT _____ LT : RT
 - TO - EDGE PAVEMENT
 STATION: 516+69.62



HORZ.DATUM: _____ GEOID: _____
 GRID: NORTHING: 528906.135 EASTING: 1782008.406

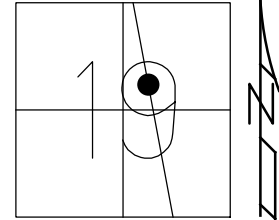
RECORD:
 FD 5/8" IPIN
 CAP ILLEGIBLE
 MN2
 DGL ENGR. TIES
 12/14/18, DGL



O.D.O.T. DISTRICT 2 SURVEY OFFICE (USE ONLY)

PERSONNEL _____	REFERENCE NO. <u>37</u>	SHEET <u>45</u> OF <u>45</u>
NOTES <u>SEA</u>	DATE <u>12/14/18</u>	ROUTE <u>SR 100</u>
H.C. <u>SEA</u>	WEATHER <u>CLOUDY</u>	COUNTY <u>SENECA</u>
R.C. <u>LL</u>	TEMP. <u>45°</u>	TOWNSHIP <u>CLINTON</u>
DWG BY <u>NIESE</u>	PID <u>95778</u>	SECTION <u>19</u>
		T <u>2</u> N R <u>15</u> E

TYPE MONUMENT MONBOX W/1" BOLT
 ON SURFACE - ~~BELOW~~ ON
 OFFSET \odot PAVEMENT _____ LT : RT
 - TO - EDGE PAVEMENT
 STATION: 523+04.12



HORZ. DATUM: _____ GEOID: _____
 GRID: NORTHING: 529536.710 EASTING: 1781937.967

RECORD:
 FD MONBOX W/1" BOLT
 MN1
 DGL ENGR. TIES
 12/14/18, DGL

