

O.D.O.T. DISTRICT 2 SURVEY OFFICE (USE ONLY)

PERSONNEL

REFERENCE NO. 1

SHEET 1 OF 46

NOTES NIESE

DATE 7/13/21

ROUTE SR 100

H.C. AUBLE

WEATHER CLOUDY

COUNTY SENECA

R.C. NIESE

TEMP. 72°

TOWNSHIP EDEN

SECTION 35

DWG BY WHITAKER

PID 95778

T 1 N R 15 E

TYPE MONUMENT MAG/WASHER

ON SURFACE - ~~BELOW~~ ON

OFFSET 0.5' LT : ~~RT~~

TO EDGE PAVEMENT

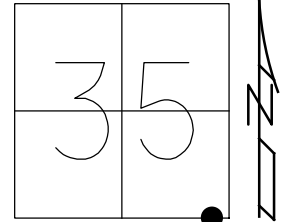
STATION: 0+00

HORZ. DATUM: NAD83 (2011)

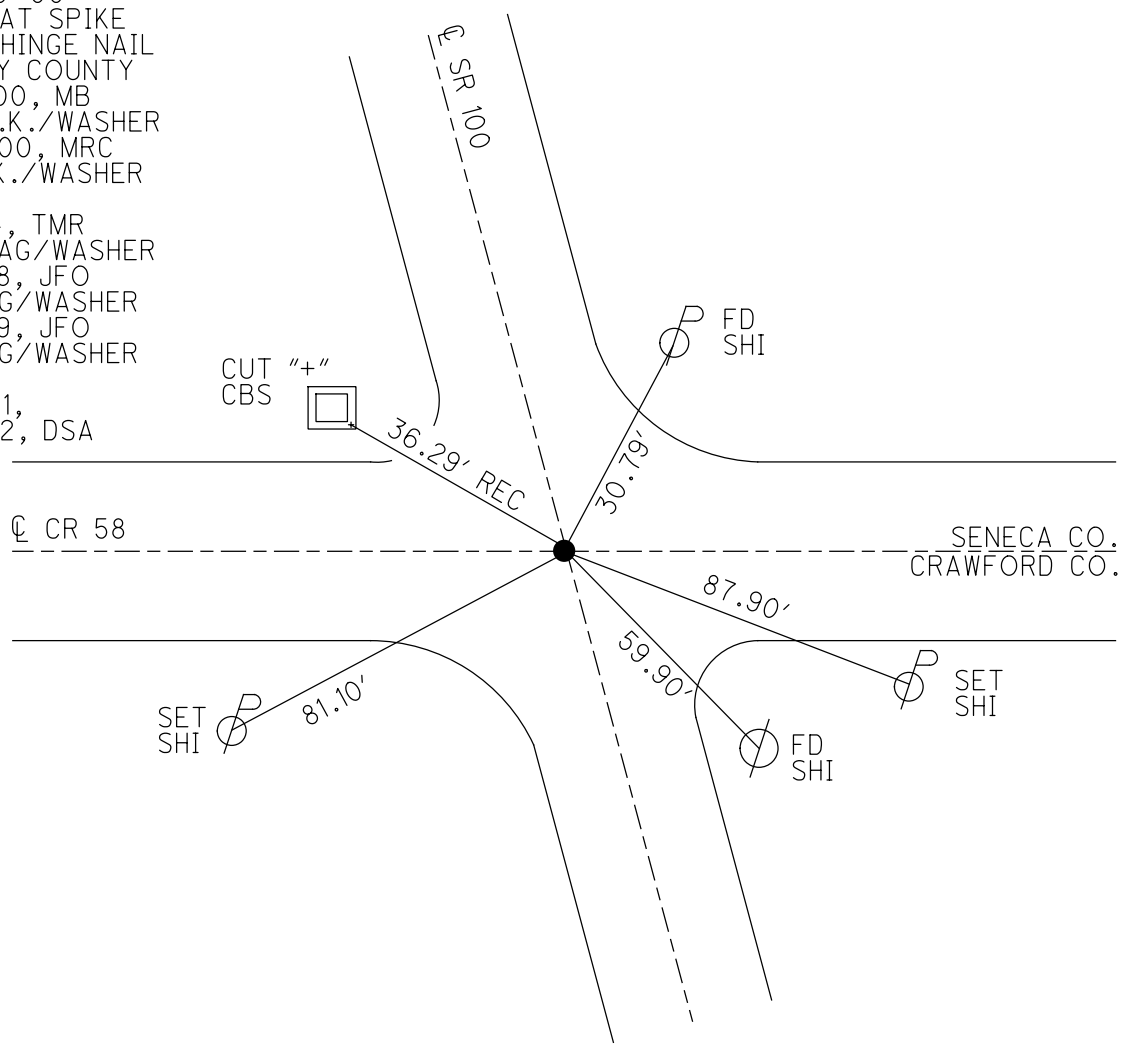
GEOID: 2012A

GRID: NORTHING: 483969.671

EASTING: 1804351.248



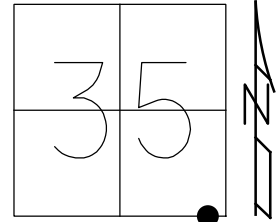
RECORD:
 STA. 0+00
 FD BOAT SPIKE
 ATOP HINGE NAIL
 SET BY COUNTY
 7/21/00, MB
 SET P.K./WASHER
 10-17-00, MRC
 FD P.K./WASHER
 REF1
 1-15-14, TMR
 SET MAG/WASHER
 5-31-18, JFO
 FD MAG/WASHER
 8-19-19, JFO
 FD MAG/WASHER
 REF 1
 7-13-21,
 6/8/22, DSA



O.D.O.T. DISTRICT 2 SURVEY OFFICE (USE ONLY)

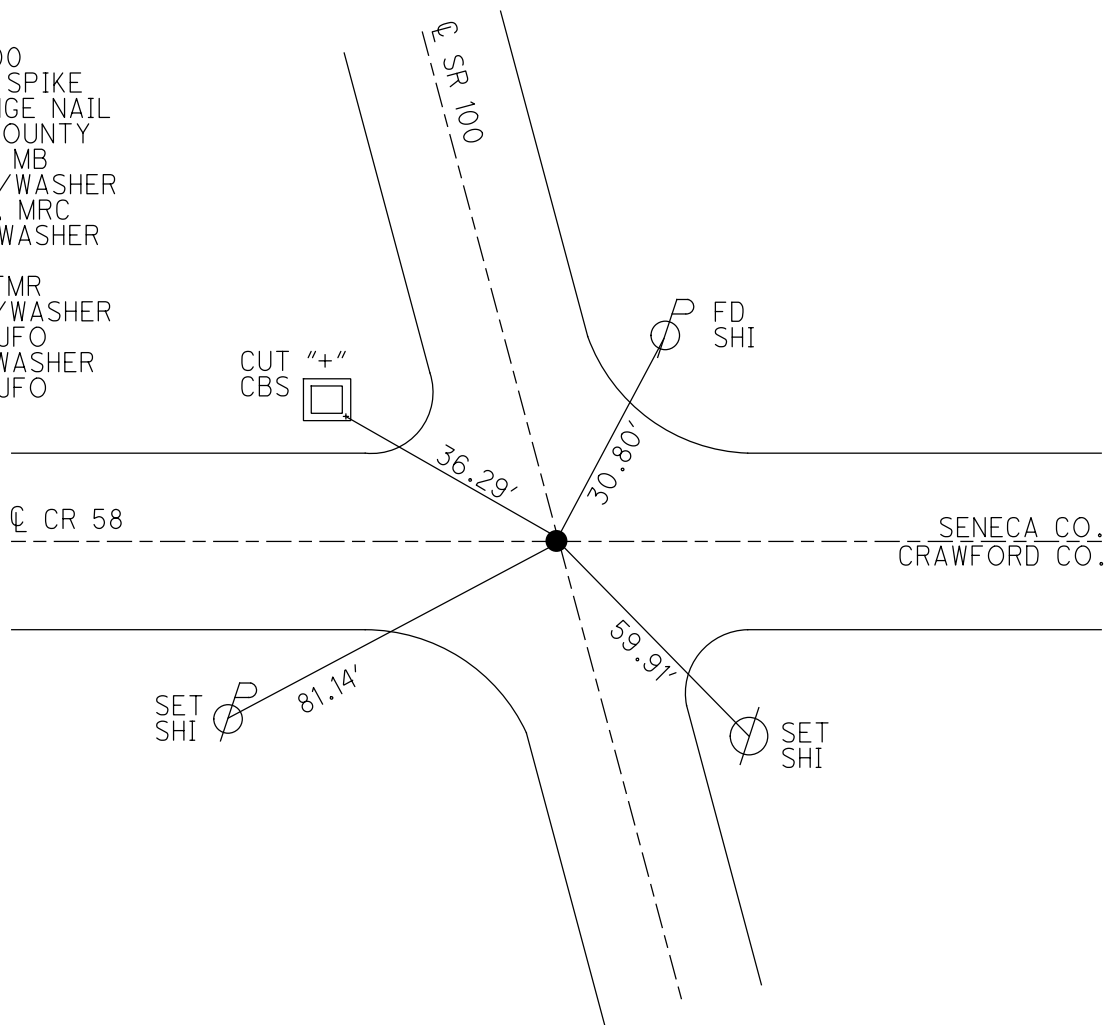
PERSONNEL _____ REFERENCE NO. 1 SHEET 1 OF 38
 NOTES HAGEMEGER DATE 5/31/18 ROUTE SR 100
 H.C. O'DONNELL WEATHER SUNNY COUNTY SENECA
 R.C. TRENKA TEMP. 78° TOWNSHIP EDEN
 DWG BY MILLER PID 107060 SECTION 35
 T 1 N R 15 E

TYPE MONUMENT MAG/WASHER
 ON SURFACE - ~~BELOW~~ ON
 OFFSET \varnothing PAVEMENT 0.5' LT : ~~RT~~
- TO - EDGE PAVEMENT
 STATION: 0+00



HORZ. DATUM: NAD83(2011) GEOID: GEOID 12A
 GRID: NORTHING: 483969.671 EASTING: 1804351.248

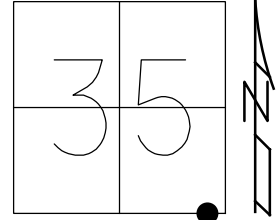
RECORD:
 STA. 0+00
 FD BOAT SPIKE
 ATOP HINGE NAIL
 SET BY COUNTY
 7/21/00, MB
 SET P.K./WASHER
 10-17-00, MRC
 FD P.K./WASHER
 REF1
 1-15-14, TMR
 SET MAG/WASHER
 5-31-18, JFO
 FD MAG/WASHER
 8-19-19, JFO



O.D.O.T. DISTRICT 2 SURVEY OFFICE (USE ONLY)

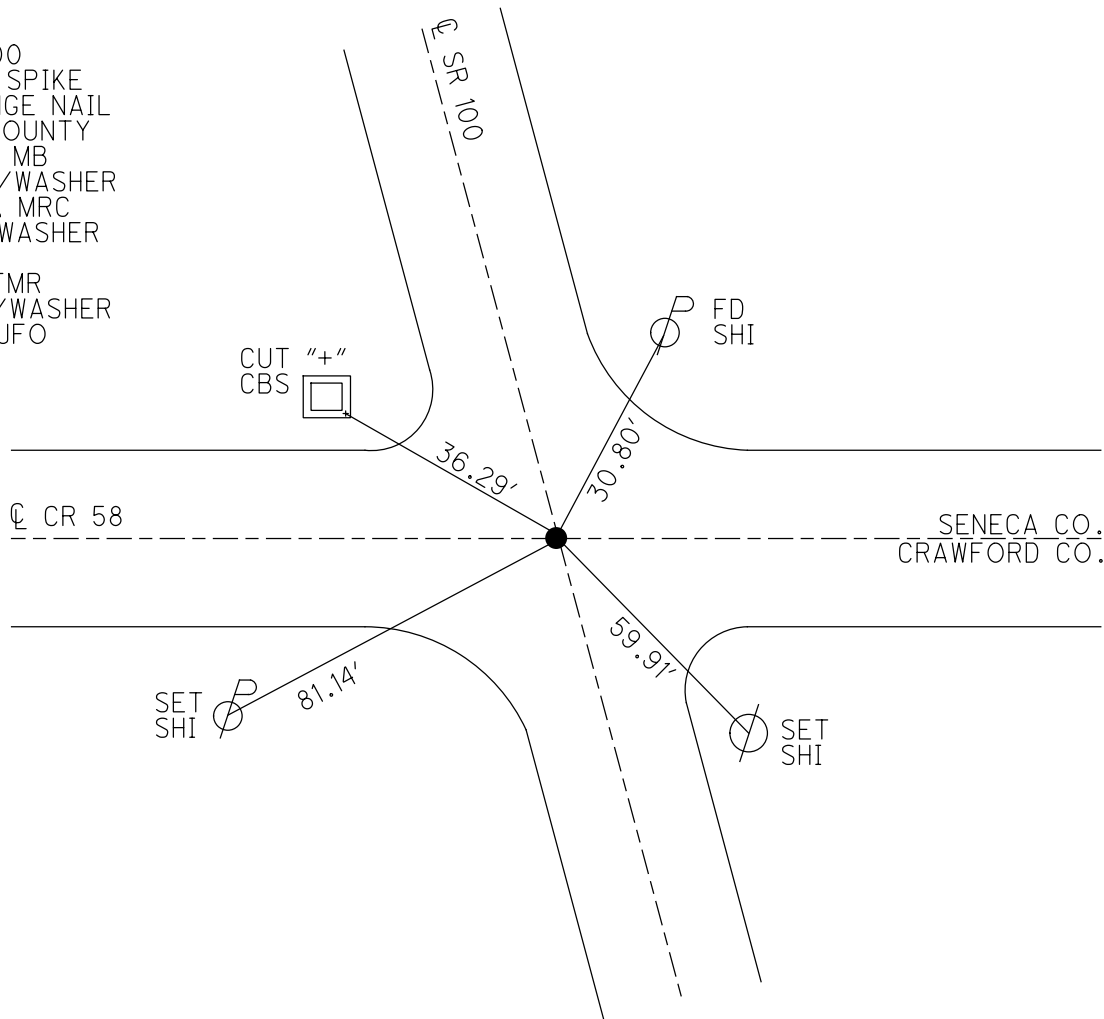
PERSONNEL _____ REFERENCE NO. 1 SHEET 1 OF 12
 NOTES HAGEMEGER DATE 5/31/18 ROUTE SR 100
 H.C. O'DONNELL WEATHER SUNNY COUNTY SENECA
 R.C. TRENKA TEMP. 78° TOWNSHIP EDEN
 SECTION 35
 DWG BY MILLER PID 93677 T 1 N R 15 E

TYPE MONUMENT MAG/WASHER
 ON SURFACE - ~~BELOW~~ ON
 OFFSET Q PAVEMENT 0.5' LT : ~~RT~~
- TO - EDGE PAVEMENT
 STATION: 0+00



HORIZ.DATUM: NAD83(2011) GEOID: GEOID 12A
 GRID: NORTHING: 483969.671 EASTING: 1804351.248

RECORD:
 STA. 0+00
 FD BOAT SPIKE
 ATOP HINGE NAIL
 SET BY COUNTY
 7/21/00, MB
 SET P.K./WASHER
 10-17-00, MRC
 FD P.K./WASHER
 REF1
 1-15-14, TMR
 SET MAG/WASHER
 5-31-18, JFO



O.D.O.T. DISTRICT 2 SURVEY OFFICE

PERSONNEL _____

REFERENCE NO. 1

SHEET 1 OF 31

NOTES CANTERBURY

H.C. BARNHISEL

R.C. MOSER

DATE 7-21-00

WEATHER FAIR

TEMP. +72°

ROUTE #100

COUNTY SENECA

TOWNSHIP EDEN

SECTION 35

T 1 N R 15 E

TYPE MONUMENT BOAT SPIKE

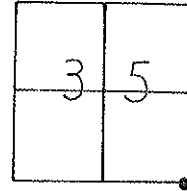
ON SURFACE - BELOW ON SURFACE

LEFT - 0 PAV'T. - RIGHT 0.5' LT & PAVT

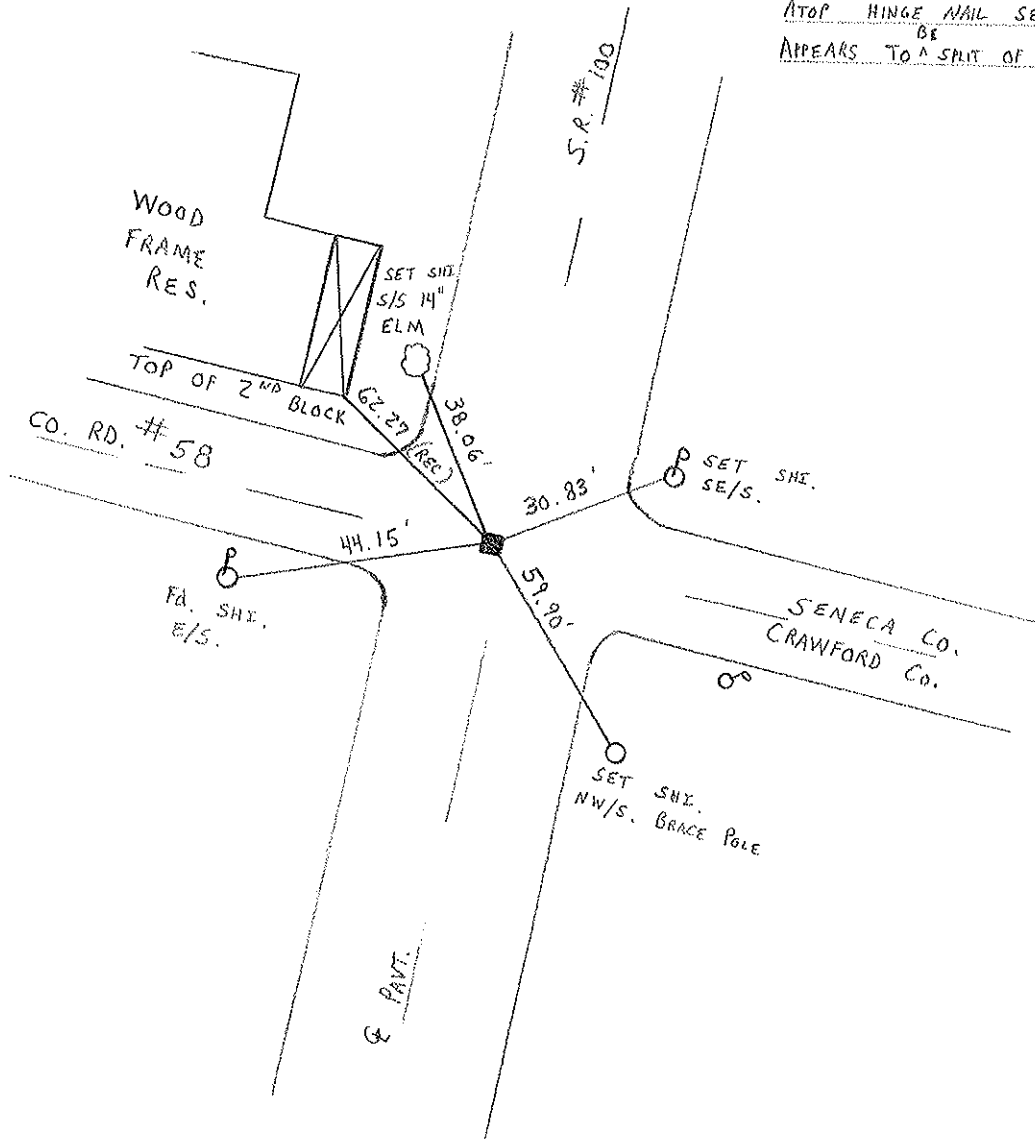
TO EDGE PAVEMENT

S.L.M. 0+00

RESET P.K. NAIL
 10-17-00
 M.R.C.



RECORD: STA 0+00, BOAT SPIKE
 ATOP HINGE NAIL SET BY COUNTY
 APPEARS TO ^{BE} A SPLIT OF PAVEMENT.



RESURFACED 2000

O.D.O.T. DISTRICT 2 SURVEY OFFICE

PERSONNEL

REFERENCE NO. 1

SHEET 1 OF

NOTES Cronin

DRAWN 11/07/86

H.C. Ripple

DATE 8/18/86

R.C. Geyman

WEATHER overcast

Barbour

TEMP. 68°

ROUTE #100

COUNTY Seneca

TOWNSHIP Eden

SECTION 35

T. 1 N. R. 15 E.

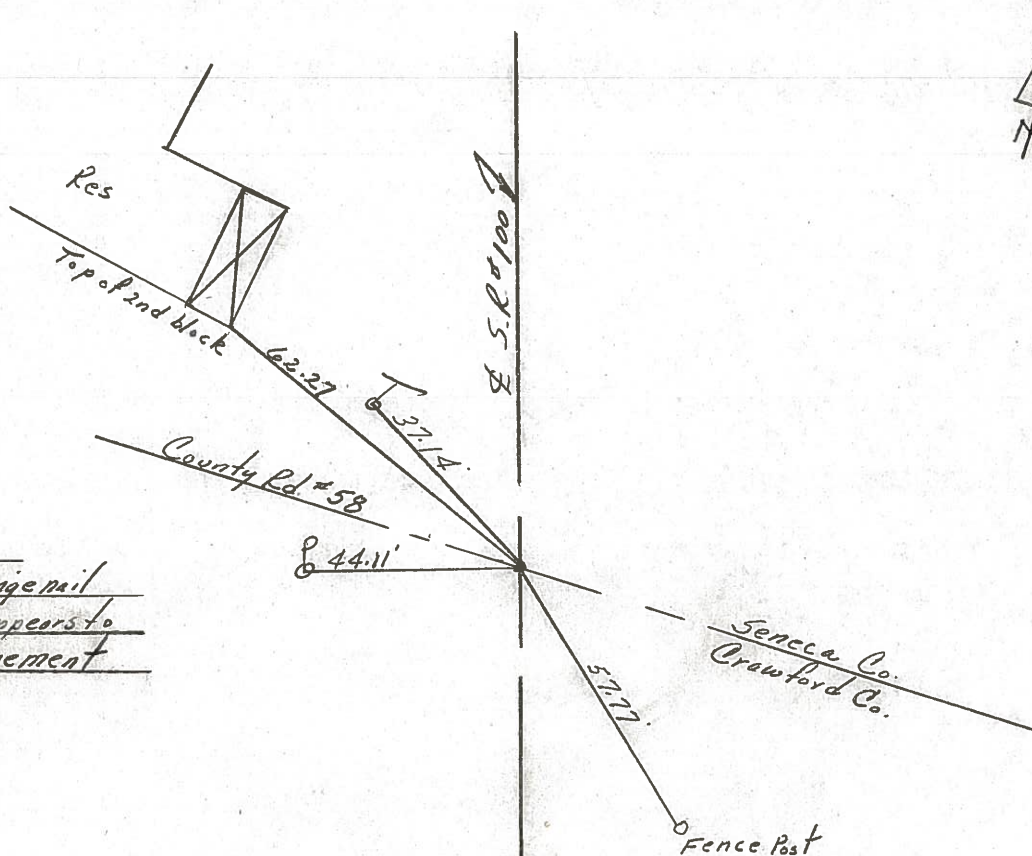
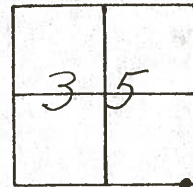
TYPE MONUMENT Boat spike

ON SURFACE - BELOW 1/2" below

LEFT - PAV'T. - RIGHT PAV'T.

TO EDGE PAVEMENT

S.L.M.



0+00
 Boat spike atop hinge nail
 set by County. Appears to
 be split at pavement

Q.D.O.T. DISTRICT 2 SURVEY OFFICE

Sht. 1 of

County SENECA S.R. #100

Date 8/5/81 Drawn 8/10/81

Township EDEN

Weather SUNNY

Section 35

Temp. 72°

T/LN, R15E

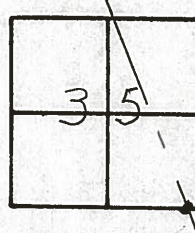
Personnel CRONIN

RIPPIE

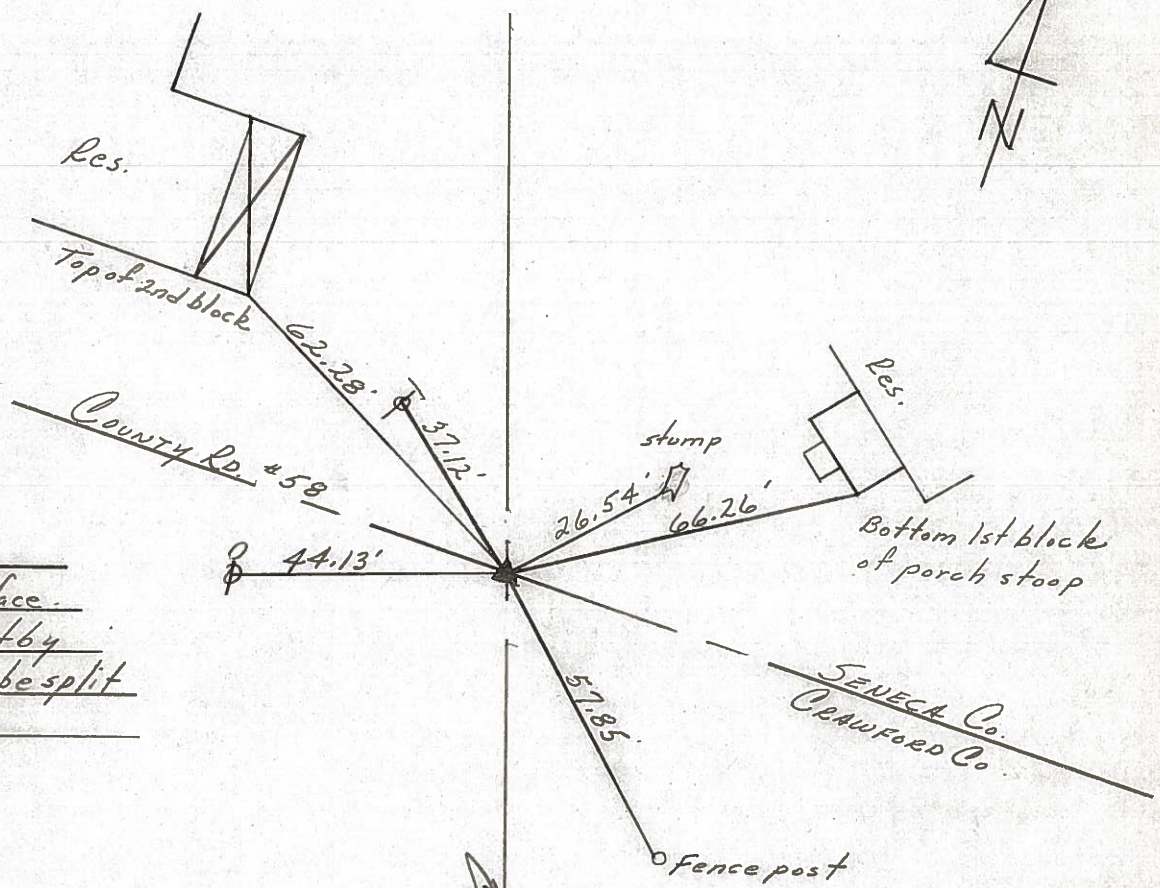
GEYMAN

MOSSER

BARBOUR



#1



0 + 00
 Fd. bolt spike on surface.
 Hinge nail below set by
 County - Appears to be split
 of pavement

S.R. #100

County SENECA S.R. 100

Date 6-11-81

Township EDEN

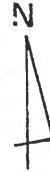
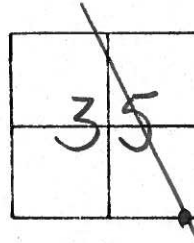
Weather clear

Section 35

Temp. +70°

T N, R E

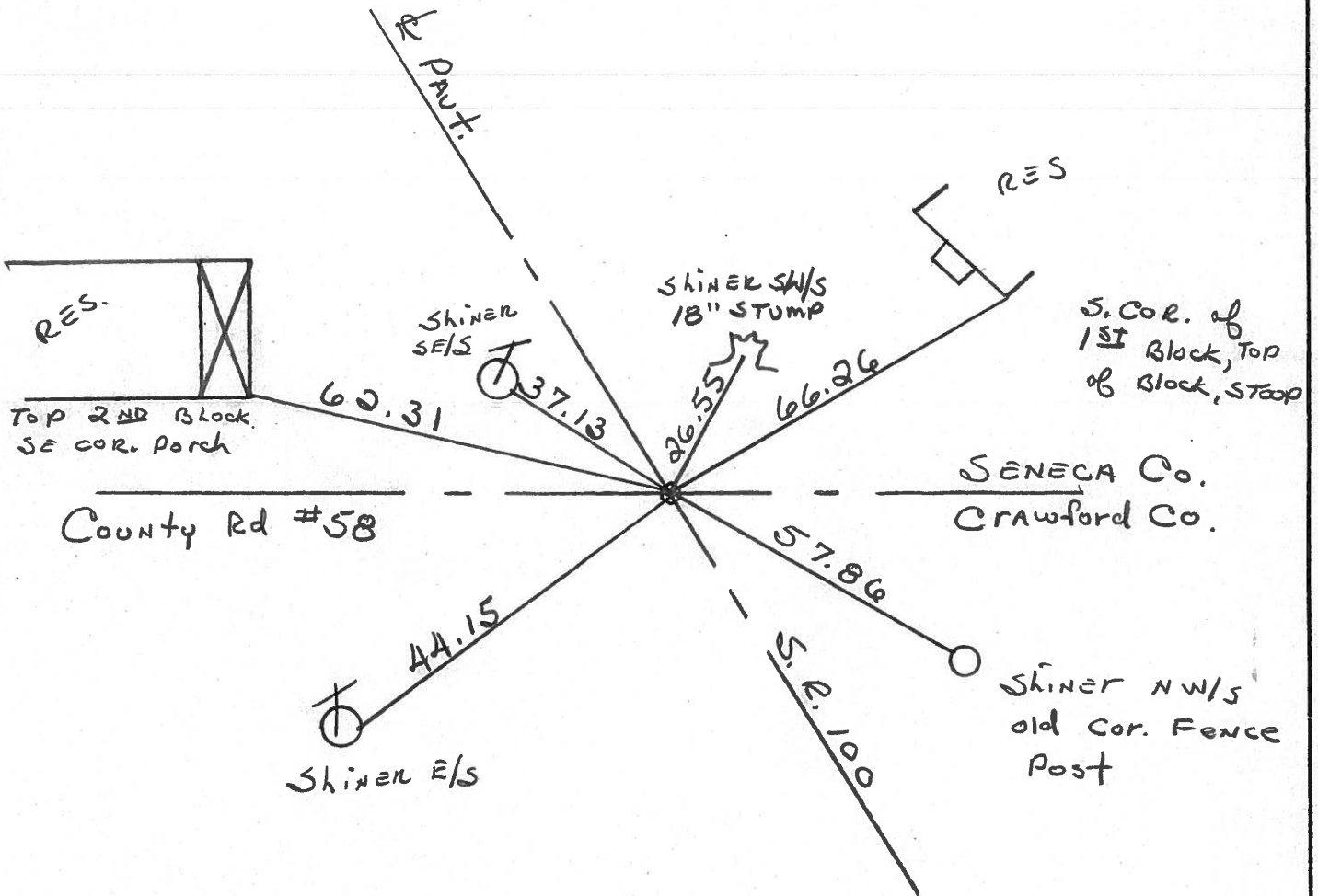
Personnel Hoffman



(1)
Householder

Fd SMALL SQUARE HEAD Spk @ surface @ ctr. of PAUT.

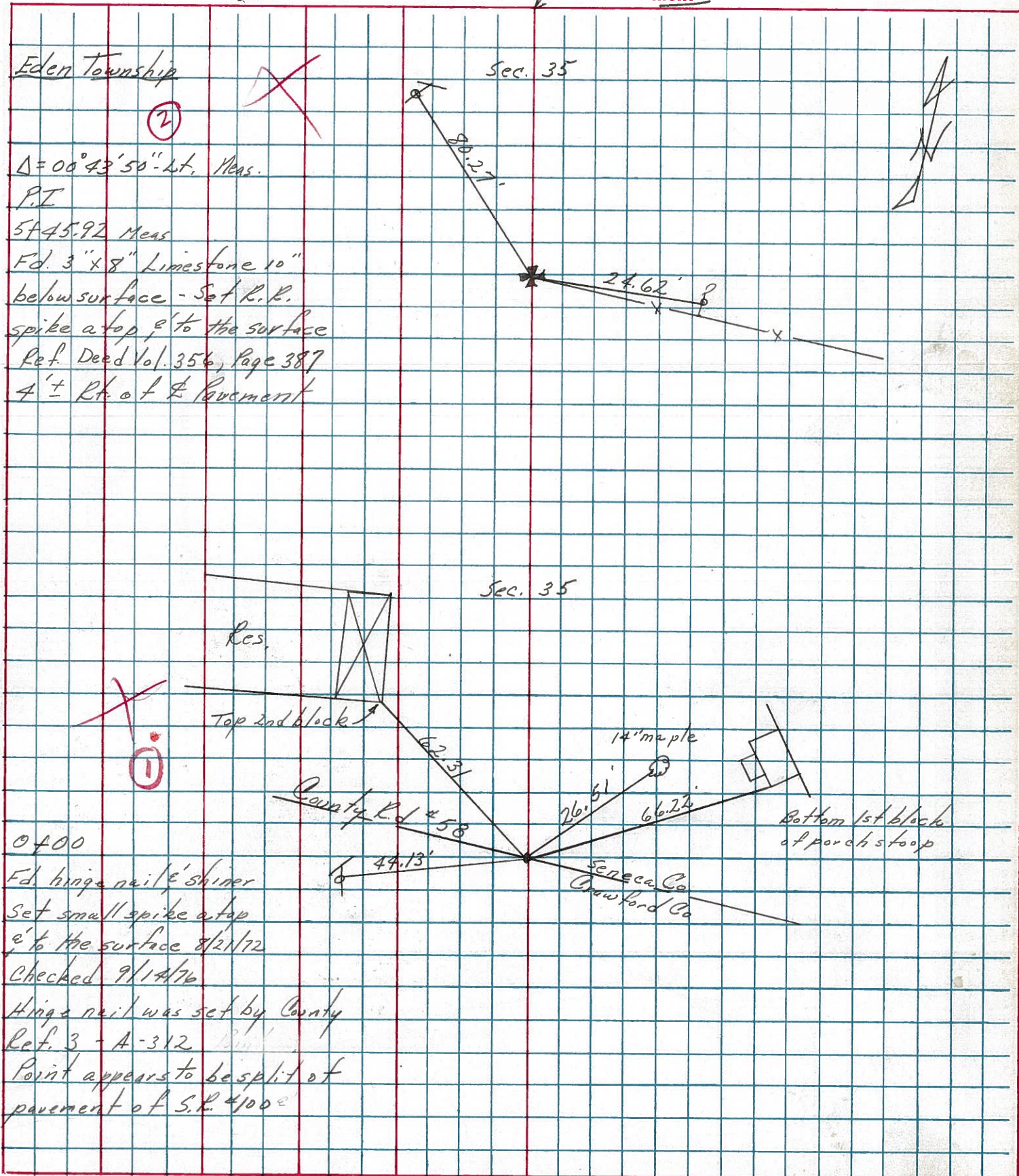
PROJECT STA ± 0+00



PERSONNEL TITLE PERSONNEL TITLE
 Cronin _____
 Ripple _____
 Geyman _____
 Barbour _____

COUNTY Seneca DATE 9/14/76
 S. R. # 100 WEATHER sunny
 SEC. Crawford Co. Line North TEMP. 75°

DESCRIPTION Ties for Control Points JOB NO. _____



Eden Township
 (2)
 $\Delta = 00^{\circ}43'50''$ Lt. Meas.
 P.I.
 5745.92 Meas
 Fd. 3" x 8" Limestone 10"
 below surface - Set R.R.
 spike a top, e' to the surface
 Ref. Deed Vol. 356, Page 387
 4' ± R.R. of E Pavement

Sec. 35
 Res.
 Top 2nd block
 62.31
 County Rd #58
 44.13'
 26.51
 14' maple
 66.24
 Bottom 1st block of porch stoop
 Seneca Co
 Crawford Co
 0400
 Fd. hinge nail & shiner
 Set small spike a top
 e' to the surface 8/21/72
 Checked 9/14/76
 Hinge nail was set by County
 Ref. 3 - A-312
 Point appears to be split of
 pavement of S.R. #100