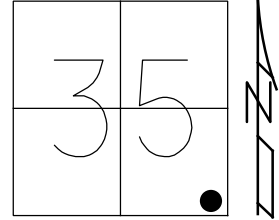


O.D.O.T. DISTRICT 2 SURVEY OFFICE (USE ONLY)

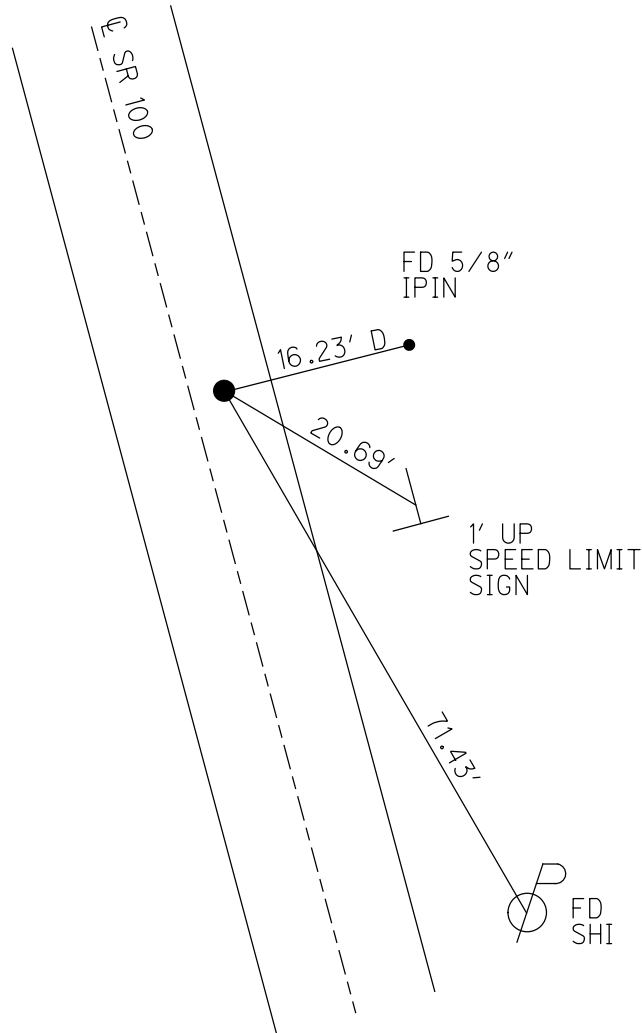
PERSONNEL \_\_\_\_\_ REFERENCE NO. 2 SHEET 2 OF 46  
 NOTES RHOADES DATE 6/17/22 ROUTE SR 100  
 H.C. AUBLE WEATHER SUNNY COUNTY SENECA  
 R.C. WHITAKER TEMP. 82° TOWNSHIP EDEN  
 \_\_\_\_\_ NIESE SECTION 35  
 DWG BY WHITAKER PID 95778 T 1 N R 15 E

TYPE MONUMENT MAG/WASHER  
 ON SURFACE - ~~BELOW~~ ON  
 OFFSET CL PAVEMENT 5.1' ~~LF~~ : RT  
4.9' TO RT EDGE PAVEMENT  
 STATION: 5+45.83



HORIZ.DATUM: NAD83(2011) GEOID: 2012A  
 GRID: NORTHING: 484460.861 EASTING: 1804113.199

RECORD: P.I.  
 $\Delta = 0^\circ 43' 50''$  LT  
 STA. 5+49.92  
 P.K./WASHER  
 ATOP R.R. SPIKE  
 ATOP LIMESTONE  
 16" BELOW  
 FD P.K./WASHER  
 7/21/00, MB  
 SET P.K./WASHER  
 10-17-00, MRC  
 FD P.K./WASHER  
 REF2  
 1-15-14, TMR  
 FD P.K./WASHER  
 5-31-18  
 8-19-19, JFO  
 SET MAG/WASHER  
 NEWREF2  
 6/17/22, DSA



O.D.O.T. DISTRICT 2 SURVEY OFFICE (USE ONLY)

PERSONNEL

REFERENCE NO. 2

SHEET 2 OF 38

NOTES HAGEMEGER DATE 5/31/18  
 H.C. O'DONNELL WEATHER SUNNY  
 R.C. TRENKA TEMP. 78°

ROUTE SR 100  
 COUNTY SENECA  
 TOWNSHIP EDEN  
 SECTION 35

DWG BY MILLER PID 107060

T 1 N R 15 E

TYPE MONUMENT P.K./WASHER

ON SURFACE - ~~BELOW~~ ON

OFFSET 5.1' LT : RT

4.9' TO RT EDGE PAVEMENT

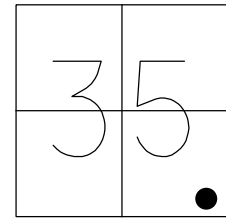
STATION: 5+45.83

HORZ.DATUM: NAD83(2011)

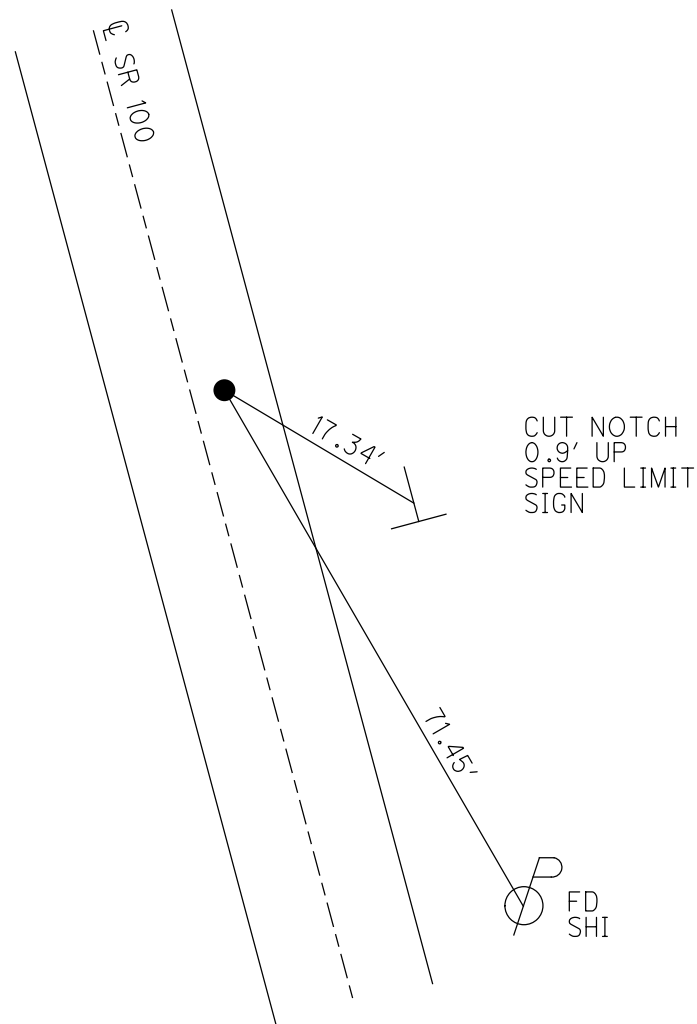
GEOID: GEOID 12A

GRID: NORTHING: 484460.861

EASTING: 1804113.199



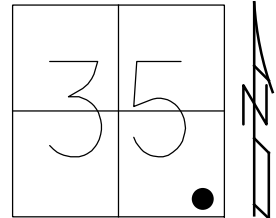
RECORD: P.I.  
 $\Delta = 0^\circ 43' 50''$  LT  
 STA. 5+49.92  
 P.K./WASHER  
 ATOP R.R. SPIKE  
 ATOP LIMESTONE  
 16" BELOW  
 FD P.K./WASHER  
 7/21/00, MB  
 SET P.K./WASHER  
 10-17-00, MRC  
 FD P.K./WASHER  
 REF2  
 1-15-14, TMR  
 FD P.K./WASHER  
 5-31-18  
 8-19-19, JFO



O.D.O.T. DISTRICT 2 SURVEY OFFICE (USE ONLY)

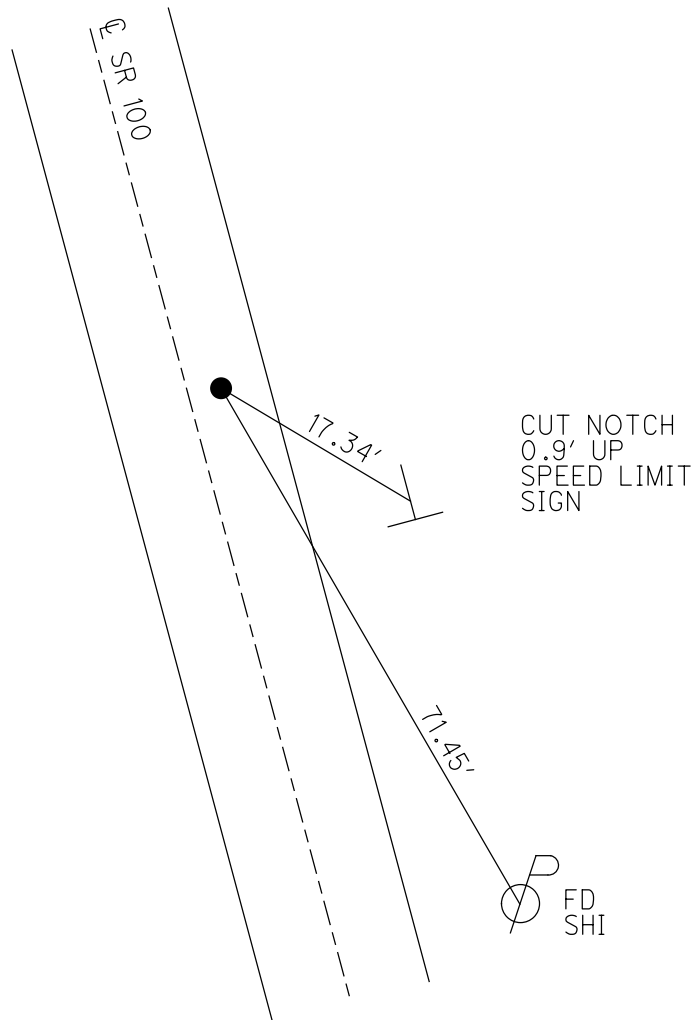
PERSONNEL \_\_\_\_\_ REFERENCE NO. 2 SHEET 2 OF 12  
 NOTES HAGEMEGER DATE 5/31/18 ROUTE SR 100  
 H.C. O'DONNELL WEATHER SUNNY COUNTY SENECA  
 R.C. TRENKA TEMP. 78° TOWNSHIP EDEN  
 DWG BY MILLER PID 93677 SECTION 35  
 T 1 N R 15 E

TYPE MONUMENT P.K./WASHER  
 ON SURFACE - ~~BELOW~~ ON  
 OFFSET  $\phi$  PAVEMENT 5.1' ~~LT~~ : RT  
4.9' TO RT EDGE PAVEMENT  
 STATION: 5+45.83



HORZ.DATUM: NAD83(2011) GEOID: GEOID 12A  
 GRID: NORTHING: 484460.861 EASTING: 1804113.199

RECORD: P.I.  
 $\Delta = 0^\circ 43' 50''$  LT  
 STA. 5+49.92  
 P.K./WASHER  
 ATOP R.R. SPIKE  
 ATOP LIMESTONE  
 16" BELOW  
 FD P.K./WASHER  
 7/21/00, MB  
 SET P.K./WASHER  
 10-17-00, MRC  
 FD P.K./WASHER  
 REF2  
 1-15-14, TMR  
 FD P.K./WASHER  
 5-31-18, JFO



# O.D.O.T. DISTRICT 2 SURVEY OFFICE

PERSONNEL

REFERENCE NO. 2

SHEET 2 OF 31

NOTES CANTERBURY

H.C. BARNHISEL

R.C. MOSEY

DATE 7-21-00

WEATHER FAIR

TEMP. +72°

ROUTE #100

COUNTY SENECA

TOWNSHIP EDEN

SECTION 35

T. 1 N. R. 15 E.

TYPE MONUMENT P.K. & WASHER

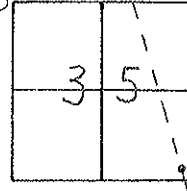
ON SURFACE - ~~BELOW~~ ON SURFACE

~~LEFT - C. PAV'T.~~ - RIGHT 5.1' RT & PAVT.

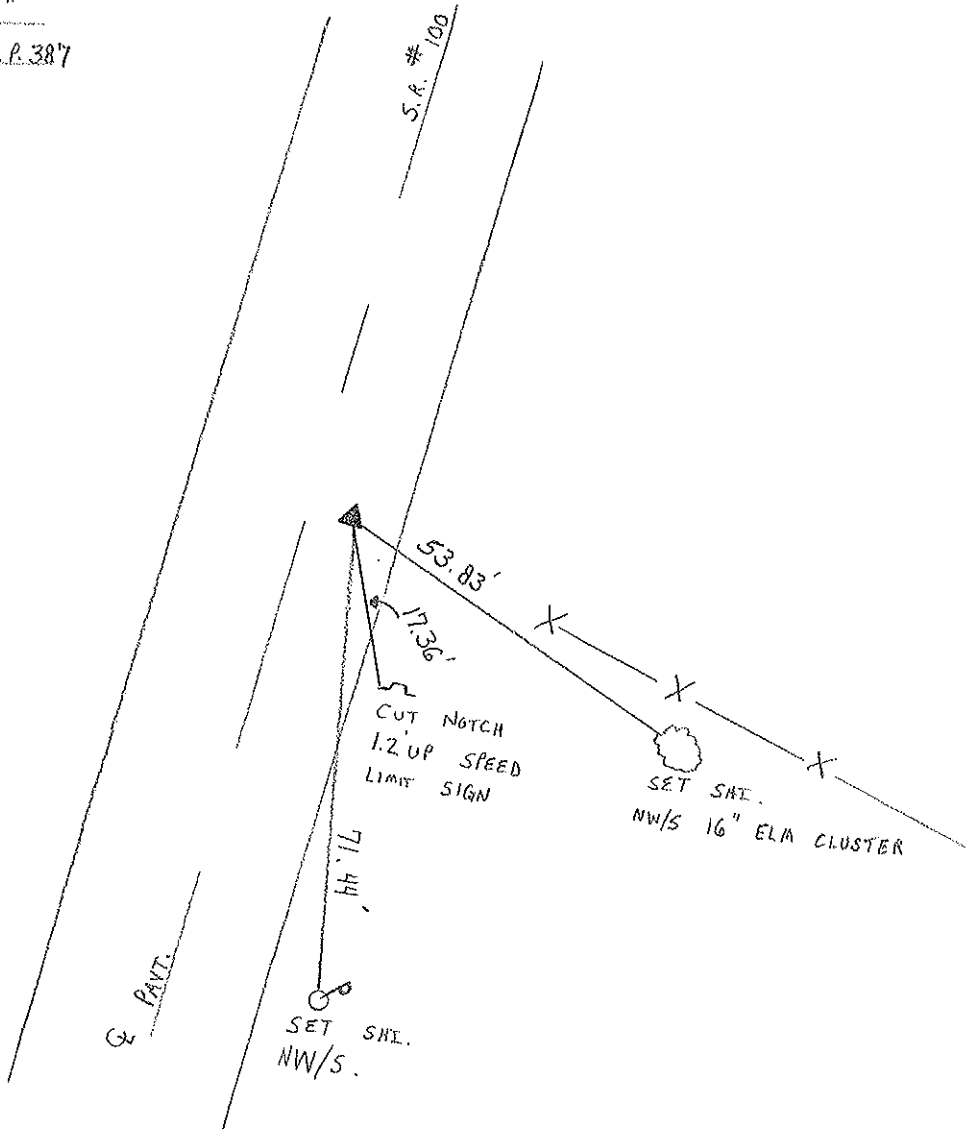
4.9' TO RT EDGE PAVEMENT

S.L.M. 5+45

RESET P.K. + WASHER  
 10-17-00  
 M.R.C.



P.I.  $\Delta = 00^\circ 43' 50''$  LT  
 RECORD: STA 5+49.92, P.K. & WASHER  
 ATOP R.R. SPK. ATOP LIMESTONE 16"  
 BELOW SURFACE - REF. DEED V. 356, P. 387



# O.D.O.T. DISTRICT 2 SURVEY OFFICE

PERSONNEL \_\_\_\_\_

REFERENCE NO. 2

SHEET 2 OF \_\_\_\_\_

NOTES Aronin

H.C. Ripple

R.C. Barbour

DATE 11/02/86

WEATHER overcast

TEMP. 50°

ROUTE #100

COUNTY Seneca

TOWNSHIP Eden

SECTION 35

T. 1 N. R. 15 E.

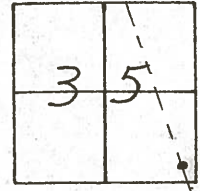
TYPE MONUMENT P.K. & washer

ON SURFACE - BELOW on surface

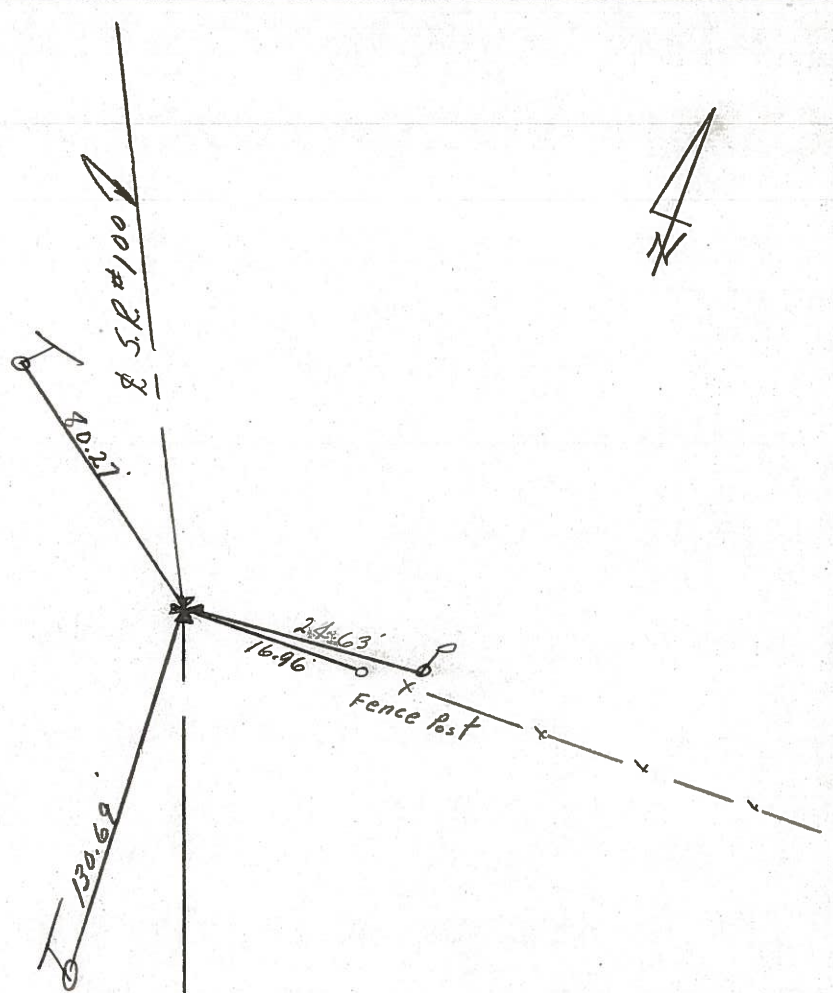
LEFT - & PAV'T. - RIGHT 5' ± Lt. & Point

TO \_\_\_\_\_ EDGE PAVEMENT

S.L.M. \_\_\_\_\_



P.E.  
A = 00° 43' 50" Lt  
5+45.92  
P.K. & washer atop P.K. & washer  
atop R.L. spike atop limestone  
16" below surface - Ref. Deed  
V. 356, P. 387



Q.D.O.T. DISTRICT 2 SURVEY OFFICE

Sht. 2 of     

County SENECA S.R. 100

Township EDEN

Section 35

T/N, R/E

Personnel CRONIN

RIPPIE

GEYMAN

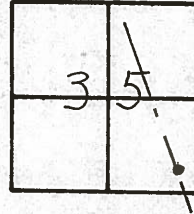
MOSSER

BARBOUR

Date 8/5/81 Drawn 8/10/81

Weather sunny

Temp. 72°

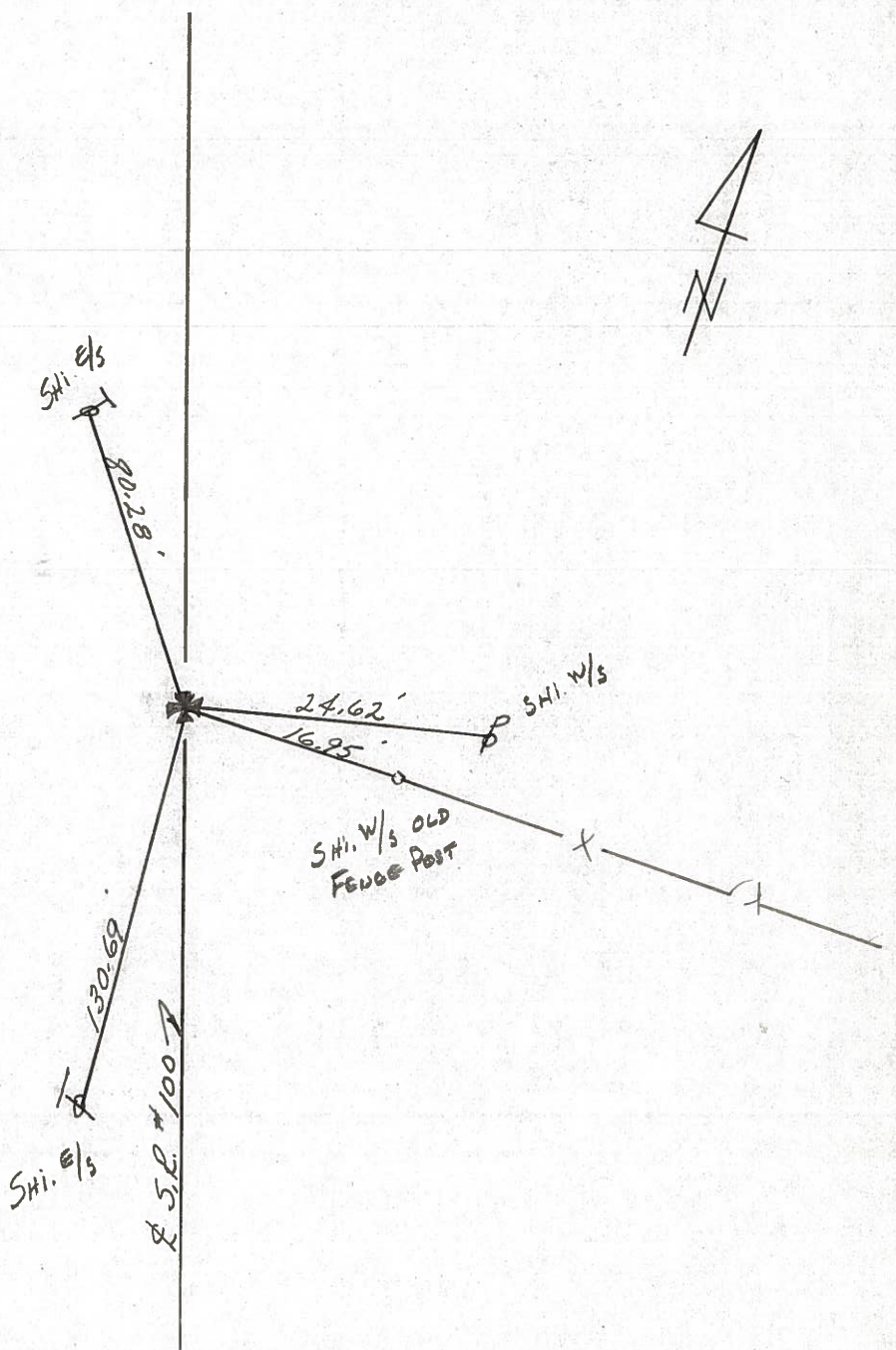


#2

P.I. -  $\delta = 00^{\circ}43'50''$  Lt.

5 + 45.92

Set P.K. & washer atop R.L. spike  
 atop 3" x 8" x ?" limestone 12"  
 below surface - Ref. Deed Vol. 356,  
 Page 387. - 4' ± Lt. of E Pavint.



County SENECA S.R. 100

Township EDEN

Section 35

T. N, R. E

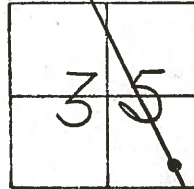
Personnel Hoffman  
Householder

Date 6-11-81

Weather Clear

Temp. +72°

#2



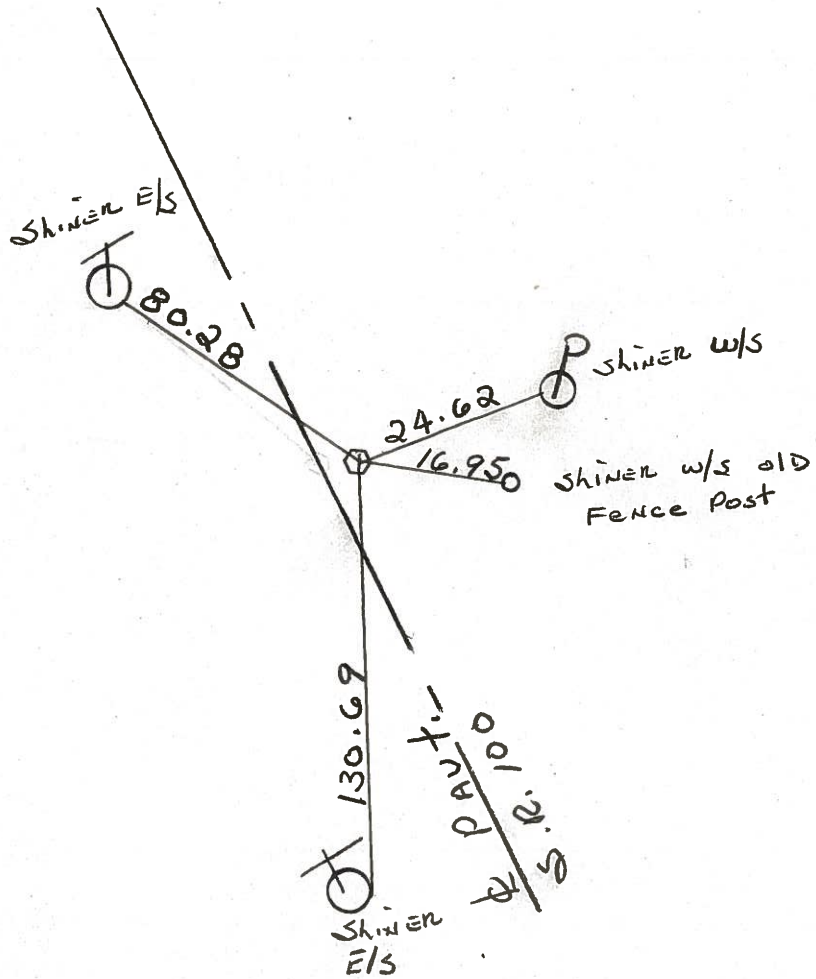
Fd. R.R. SPK @ SURFACE

Project STA ± 5+47

4.5' E. of R. PAUT

14.5' to W. Edge PAUT.

5.2' to E. Edge PAUT.



$\Delta = 00^{\circ}.43' - 50''$  Lt. REC.  
P.I. STA. 5+45.92

PERSONNEL TITLE PERSONNEL TITLE

Cronin  
Ripple  
Geyman  
Barbour

COUNTY Seneca

DATE 9/14/76

S. R. #100

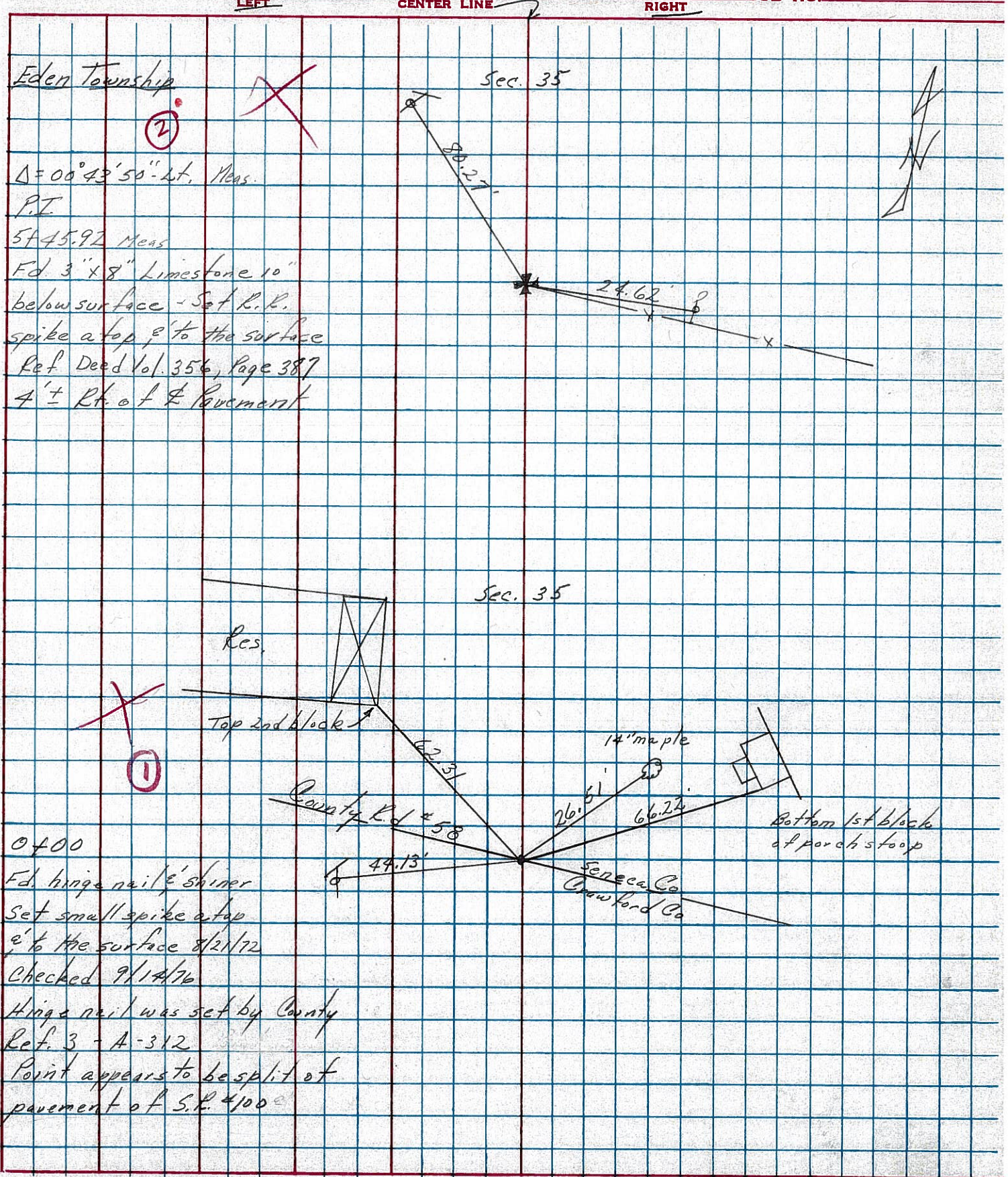
WEATHER sunny

SEC. Crawford Co. Line North TEMP. 75°

DESCRIPTION

Ties for Control Points

JOB NO.



Eden Township

Sec. 35

$\Delta = 00^\circ 43' 50''$  - Lt. Meas.

P.I.

5+45.92 Meas

Fd. 3" x 8" Limestone 10"  
below surface - Set R.R.  
spike a top, 8' to the surface  
Ref. Deed Vol. 356, Page 387  
4' ± Rt. of E. pavement

Sec. 35

Res.

Top 2nd block

14" maple

Bottom 1st block of porch stoop

0+00

Fd. hinge nail & shiner  
Set small spike a top  
8' to the surface 8/21/72  
Checked 9/14/76

Hinge nail was set by County  
Ref. 3 - A-312  
Point appears to be split of  
pavement of S.R. #100

County L.d. #58

Seneca Co.  
Crawford Co.