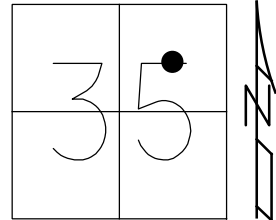


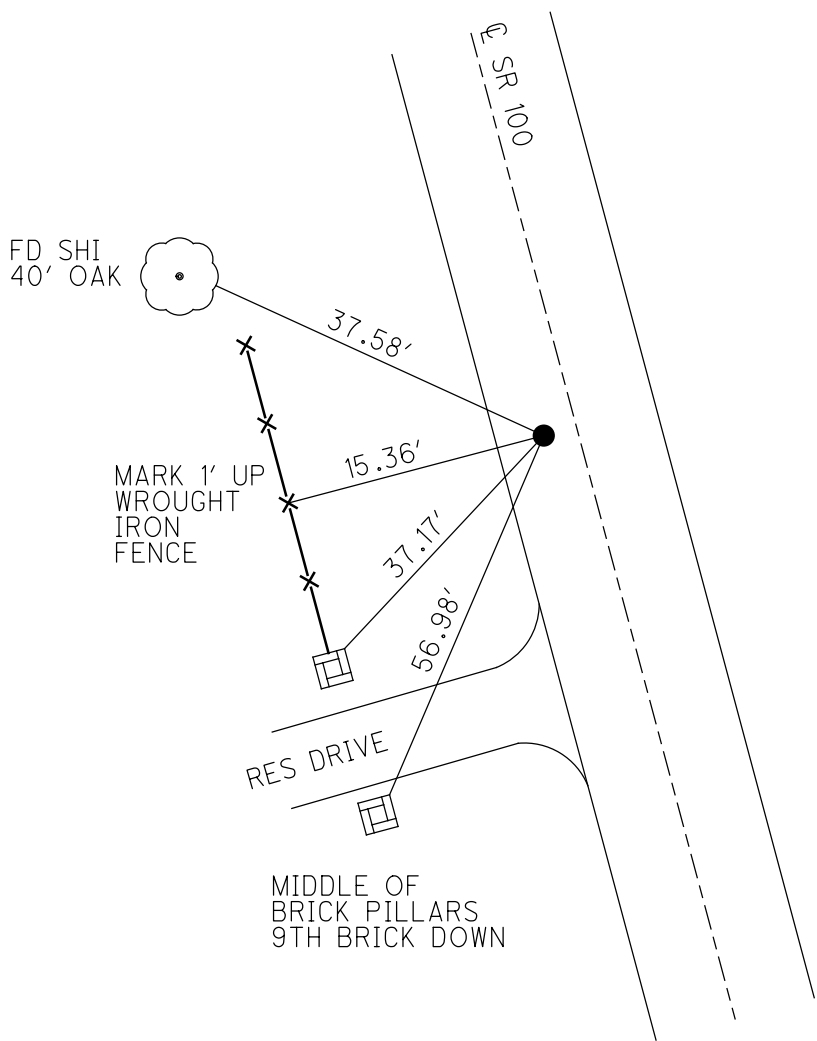
O.D.O.T. DISTRICT 2 SURVEY OFFICE (USE ONLY)

PERSONNEL _____ REFERENCE NO. 3 SHEET 3 OF 46
 NOTES RHOADES DATE 6/17/22 ROUTE SR 100
 H.C. AUBLE WEATHER SUNNY COUNTY SENECA
 R.C. WHITAKER TEMP. 82° TOWNSHIP EDEN
 _____ NIESE _____ SECTION 35
 DWG BY WHITAKER PID 95778 T 1 N R 15 E

TYPE MONUMENT MAG/WASHER
 ON SURFACE - ~~BELOW~~ ON _____
 OFFSET ☉ PAVEMENT 5.3' LT : ~~RT~~
4.6' TO LT EDGE PAVEMENT
 STATION: 32+87.70



HORZ.DATUM: NAD83(2011) GEOID: 2012A
 GRID: NORTHING: 486913.246 EASTING: 1802886.975

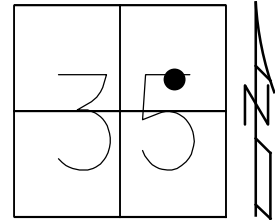


RECORD: P.O.T.
 STA. 32+87.97
 FD P.K./WASHER
 ATOP P.K./WASHER
 ATOP BOAT SPIKE/WASHER
 2" BELOW
 FD P.K./WASHER
 7/21/00, MB
 SET P.K./WASHER
 10-17-00, MRC
 FD P.K./WASHER
 REF3
 1-15-14, TMR
 FD P.K./WASHER
 5-31-18
 8-19-19, JFO
 SET MAG/WASHER
 NEWREF3
 6/17/22, DSA

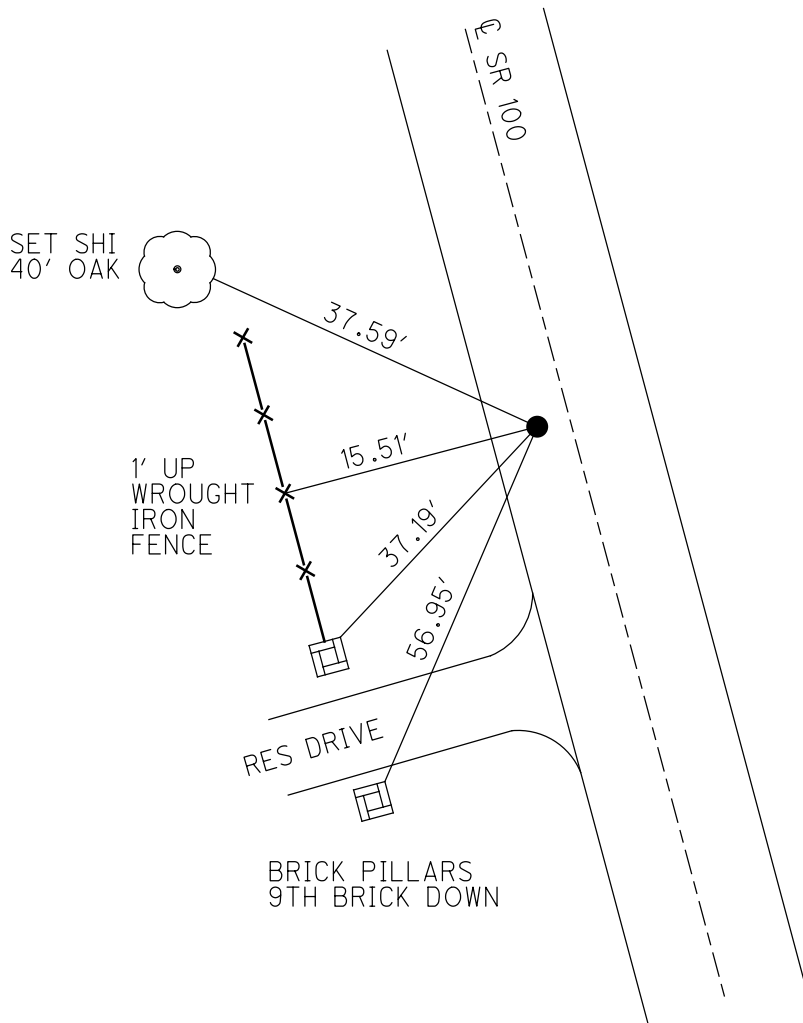
O.D.O.T. DISTRICT 2 SURVEY OFFICE (USE ONLY)

PERSONNEL _____ REFERENCE NO. 3 SHEET 3 OF 38
 NOTES HAGEMEGER DATE 5/31/18 ROUTE SR 100
 H.C. O'DONNELL WEATHER SUNNY COUNTY SENECA
 R.C. TRENKA TEMP. 78° TOWNSHIP EDEN
 DWG BY MILLER PID 107060 SECTION 35
 T 1 N R 15 E

TYPE MONUMENT P.K./WASHER
 ON SURFACE - ~~BELOW~~ ON
 OFFSET ϕ PAVEMENT 5.3' LT : ~~RT~~
4.6' TO LT EDGE PAVEMENT
 STATION: 32+87.70



HORZ.DATUM: NAD83(2011) GEOID: GEOID 12A
 GRID: NORTHING: 486913.246 EASTING: 1802886.975

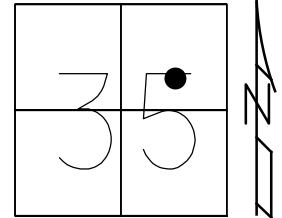


RECORD: P.O.T.
 STA. 32+87.97
 FD P.K./WASHER
 ATOP P.K./WASHER
 ATOP BOAT SPIKE/WASHER
 2" BELOW
 FD P.K./WASHER
 7/21/00, MB
 SET P.K./WASHER
 10-17-00, MRC
 FD P.K./WASHER
 REF3
 1-15-14, TMR
 FD P.K./WASHER
 5-31-18
 8-19-19, JFO

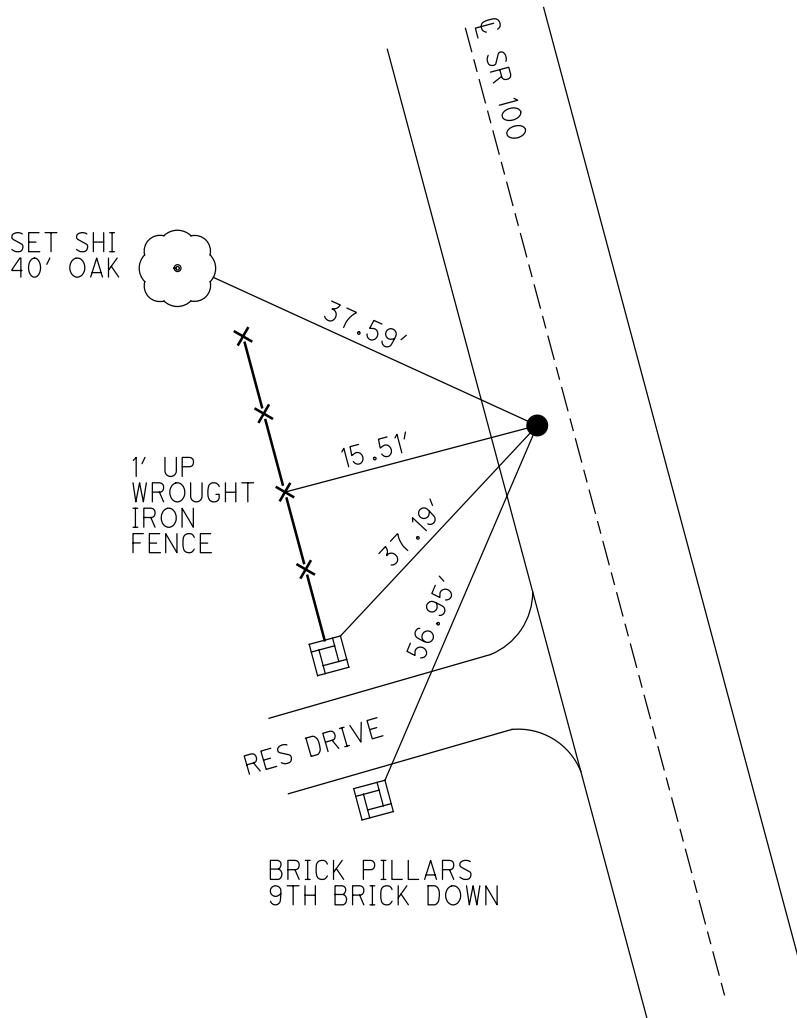
O.D.O.T. DISTRICT 2 SURVEY OFFICE (USE ONLY)

PERSONNEL _____ REFERENCE NO. 3 SHEET 3 OF 12
 NOTES HAGEMEGER DATE 5/31/18 ROUTE SR 100
 H.C. O'DONNELL WEATHER SUNNY COUNTY SENECA
 R.C. TRENKA TEMP. 78° TOWNSHIP EDEN
 DWG BY MILLER PID 93677 SECTION 35
 T 1 N R 15 E

TYPE MONUMENT P.K./WASHER
 ON SURFACE - ~~BELOW~~ ON
 OFFSET 4.6' TO LT EDGE PAVEMENT
 STATION: 32+87.70



HORZ.DATUM: NAD83(2011) GEOID: GEOID 12A
 GRID: NORTHING: 486913.246 EASTING: 1802886.975



RECORD: P.O.T.
 STA. 32+87.97
 FD P.K./WASHER
 ATOP P.K./WASHER
 ATOP BOAT SPIKE/WASHER
 2" BELOW
 FD P.K./WASHER
 7/21/00, MB
 SET P.K./WASHER
 10-17-00, MRC
 FD P.K./WASHER
 REF3
 1-15-14, TMR
 FD P.K./WASHER
 5-31-18, JFO

O.D.O.T. DISTRICT 2 SURVEY OFFICE

PERSONNEL _____

REFERENCE NO. 3

SHEET 3 OF 31

NOTES CANTERBURY

H.C. BARNHISEL

R.C. MOSEER

DATE 7-21-00

WEATHER FAIR

TEMP. +72°

ROUTE # 100

COUNTY SENECA

TOWNSHIP Eden

SECTION 35

T 1 N R 15 E

TYPE MONUMENT P.R. & WASHER

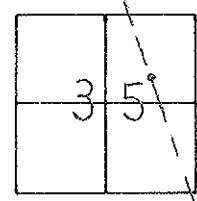
ON SURFACE - BELOW ON SURFACE

LEFT - 0 PAV'T. - RIGHT 5.3' LT & PAVT.

4.6' TO LT EDGE PAVEMENT

S.L.M. 32 + 82

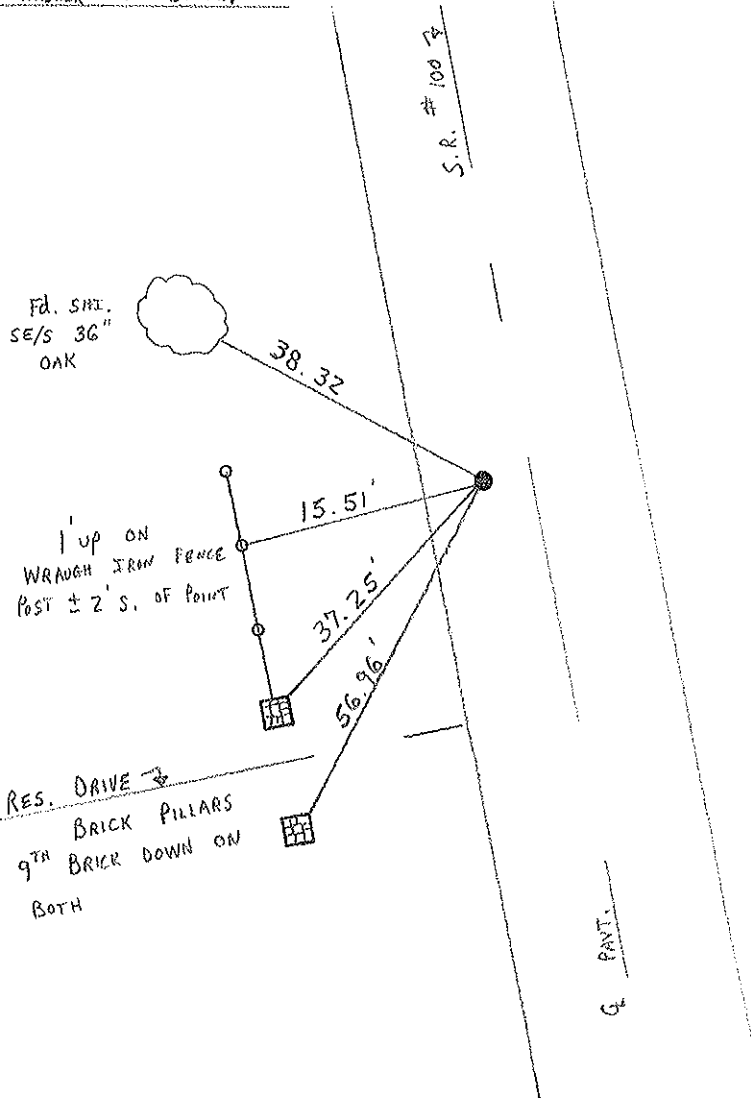
RESET P.R. & WASHER
 10-17-00
 M.R.C.



RECORD: P.O.T 32 + 87.97

P.R. & WASHER ATOP P.R. & WASHER ATOP

BOAT SPK. & WASHER 2" BELOW



O.D.O.T. DISTRICT 2 SURVEY OFFICE

PERSONNEL _____

REFERENCE NO. 3

SHEET 3 OF _____

NOTES Cronin

H.C. Ripple

R.C. Barbour

DATE 11/07/86

WEATHER overcast

TEMP. 50°

ROUTE #100

COUNTY Seneca

TOWNSHIP Eden

SECTION 35

T. 1 N. R. 15 E.

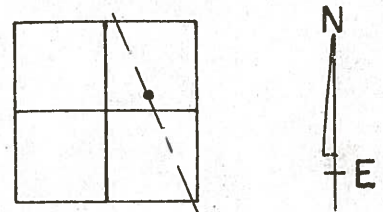
TYPE MONUMENT P.K. & washer

ON SURFACE - BELOW on surface

LEFT - ℄ PAV'T. - RIGHT 5' ± Lt. & Pav't

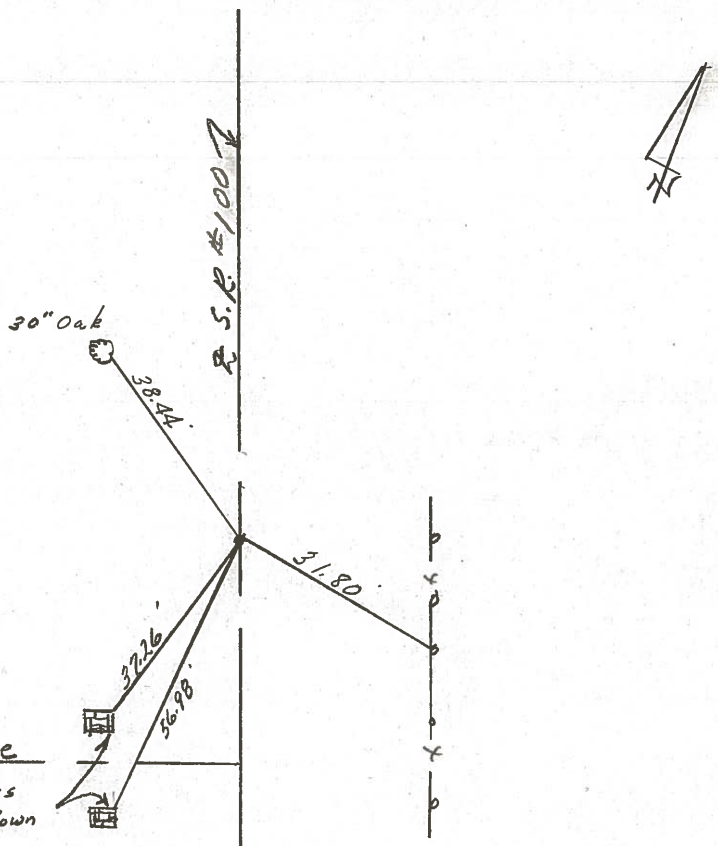
TO _____ EDGE PAVEMENT

S.L.M. _____



P.O.T.
32+87.97
P.K. & washer atop P.K. & washer
atop post spike & washer 2"
below surface

℄ Drive
brick pillars
9th brick down



County SENECA S.R. 100

Date 8/5/81 DRAWN 8/10/81

Township EDEN

Weather SUNNY

Section 35

Temp. 72°

TIN, RISE

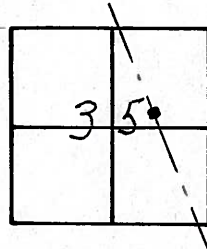
Personnel CRONIN

RIPPLE

GEYMAN

MOSSER

BARBOUR



#3



P.O.T.
32 + 87.97
Bolt spike & washer 1" ±
below surface. 5" Lt of
E of Pavement - Reset
P.K. & Washer

30" oak
ROOT

38.51'

31.74'

SHI. W/S Wood Post
WOVEN WIRE FENCE

Drive

JAMES HURLEY
RES. # 844
brick pillars
9th brick down

37.21'

56.92'

68.32'

SHI. WELS

S.R. #1007

County SENECA S.R. 100

Township EDEN

Section 35

T N, R E

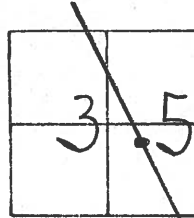
Personnel HOFFMAN
Householder

Date 6-11-81

Weather Clear

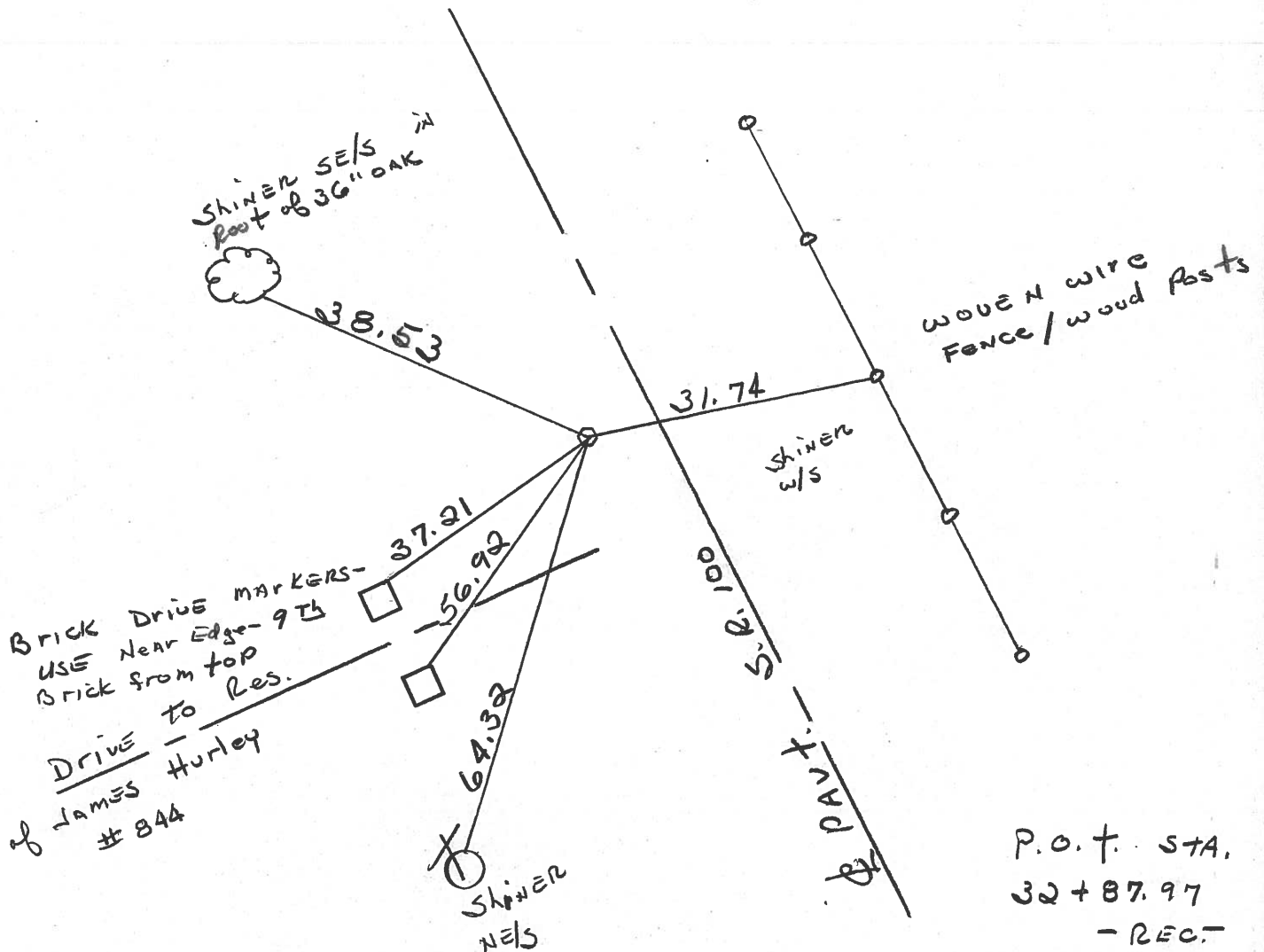
Temp. +80°

#3



Fd. SMALL SQUARE SPK @ SURFACE
5.4' W. of & PAUT.
5.4' to W. Edge PAUT.
14.9' to E. Edge PAUT.

PROJECT STA. 32+96



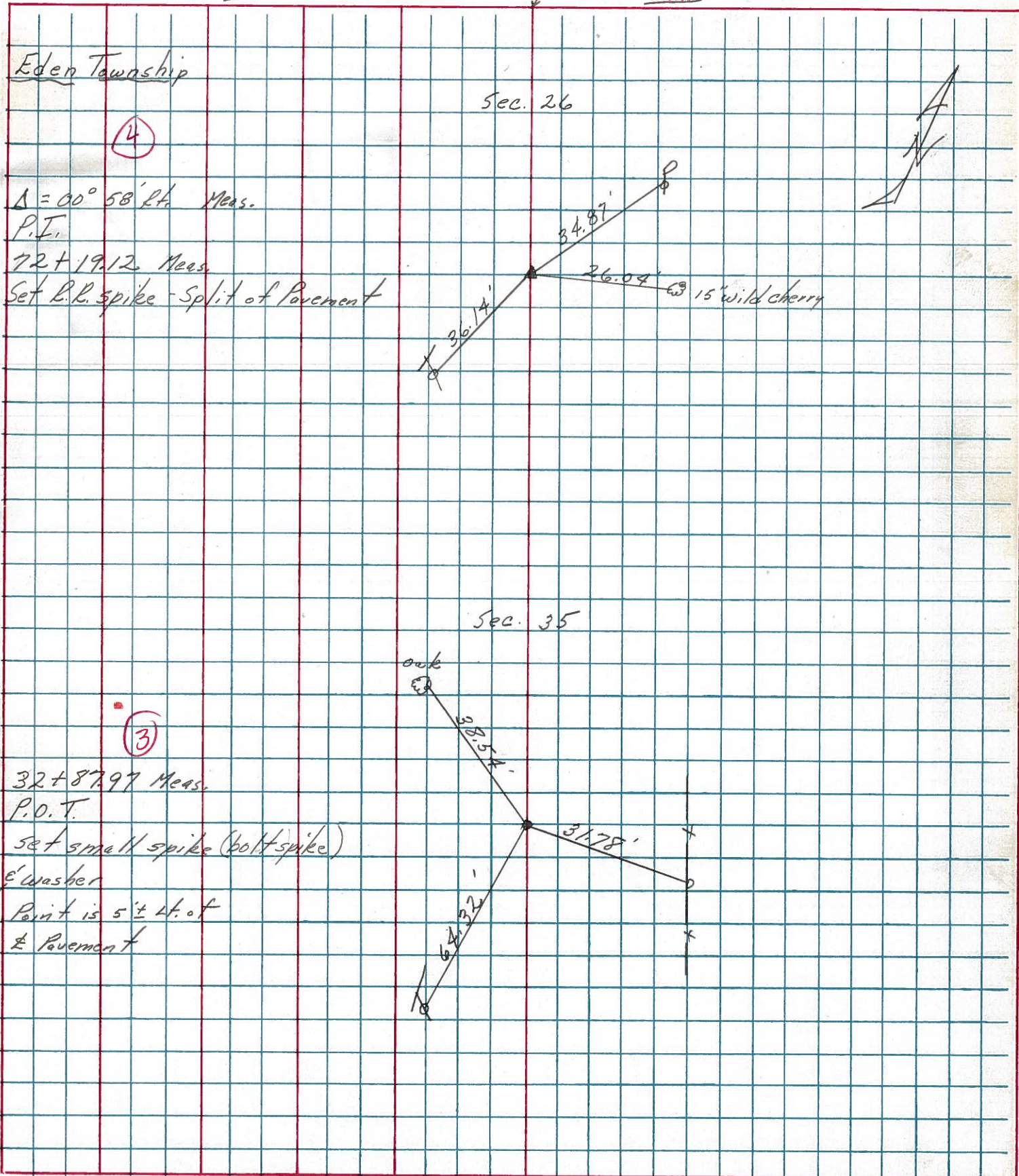
P.O.T. STA.
32+87.97
- REC.

PERSONNEL	TITLE	PERSONNEL	TITLE
Cronin		Schneider	
Pipple		Barbour	
Geyman			

COUNTY Seneca DATE 9/14/76
 S. R. #100 WEATHER sunny
 SEC. Crawford Co. Line North TEMP. 75°

DESCRIPTION Ties for Control Points

JOB NO. _____

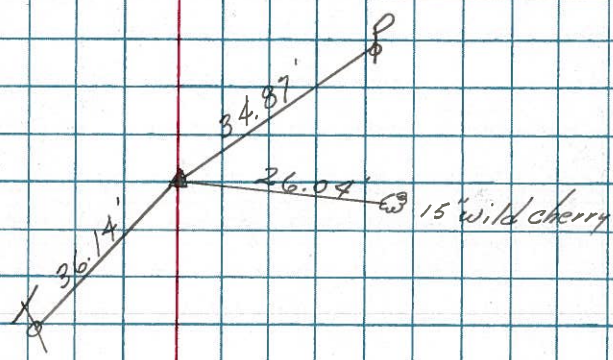


Eden Township

Sec. 26

(4)

$\Delta = 00^\circ 58' 24''$ Meas.
 P.I.
 72+19.12 Meas.
 Set R.R. spike - Split of Pavement



Sec. 35

(3)

32+87.97 Meas.
 P.O.T.
 set small spike (bolt spike)
 & washer
 Point is 5' Lt. of
 & Pavement

