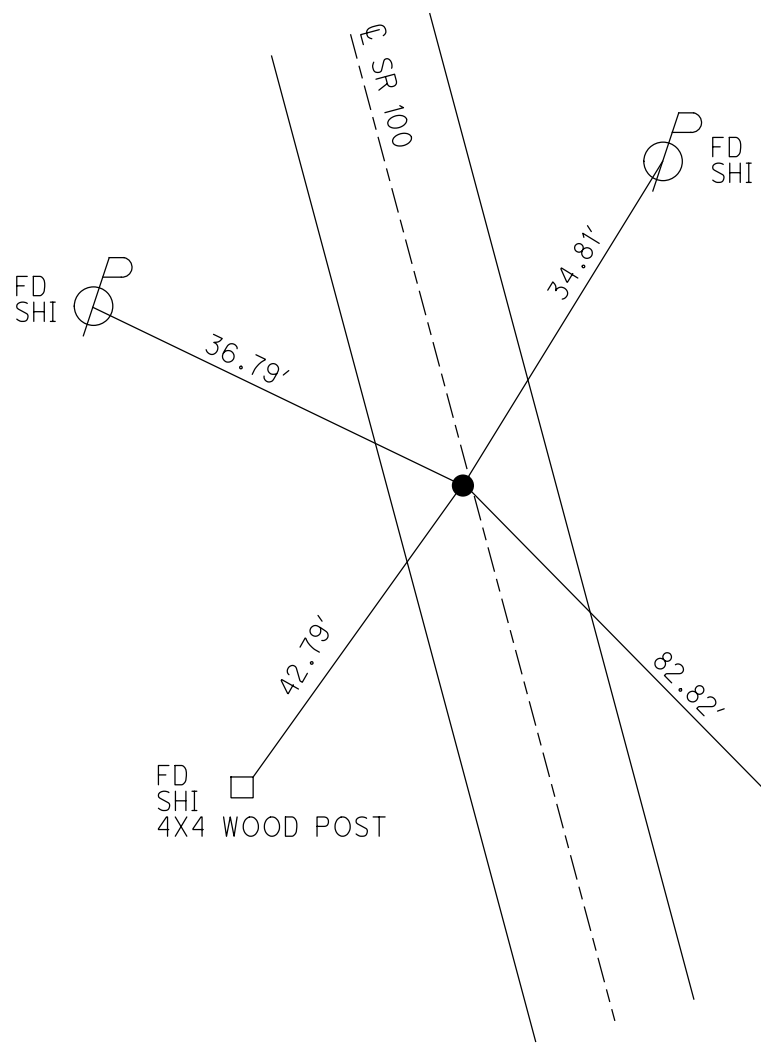
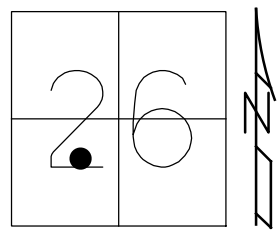


O.D.O.T. DISTRICT 2 SURVEY OFFICE (USE ONLY)

PERSONNEL \_\_\_\_\_ REFERENCE NO. 4 SHEET 4 OF 46  
 NOTES RHOADES DATE 6/17/22 ROUTE SR 100  
 H.C. AUBLE WEATHER SUNNY COUNTY SENECA  
 R.C. WHITAKER TEMP. 82° TOWNSHIP EDEN  
 \_\_\_\_\_ NIESE SECTION 26  
 DWG BY WHITAKER PID 95778 T 1 N R 15 E

TYPE MONUMENT MAG/WASHER  
 ON SURFACE - ~~BELOW~~ ON  
 OFFSET 0.2' LT : ~~RT~~  
9.3' TO LT EDGE PAVEMENT  
 STATION: 72+18.73

HORIZ.DATUM: NAD(2011) GEOID: 2012A  
 GRID: NORTHING: 490429.055 EASTING: 1801128.538



RECORD: P.I.  
 $\Delta = 0^\circ 58' RT$   
 STA. 72+19.12  
 FD P.K./WASHER  
 ATOP R.R. SPIKE  
 FD P.K./WASHER  
 7/21/00, MB  
 SET P.K./WASHER  
 10-17-00, MRC  
 FD R.R. SPIKE  
 4" DOWN  
 REF4  
 1-15-14, TMR  
 5-31-18  
 8-19-19, JFO  
 SET MAG/WASHER  
 NEWREF4  
 6/17/22, DSA

FD SHI  
 4X4 WOOD POST

FD SHI  
 10" CEDAR

O.D.O.T. DISTRICT 2 SURVEY OFFICE (USE ONLY)

PERSONNEL \_\_\_\_\_ REFERENCE NO. 4 SHEET 4 OF 38

NOTES HAGEMEGER DATE 5/31/18 ROUTE SR 100  
 H.C. O'DONNELL WEATHER SUNNY COUNTY SENECA  
 R.C. TRENKA TEMP. 78° TOWNSHIP EDEN  
 SECTION 26

DWG BY MILLER PID 107060 T 1 N R 15 E

TYPE MONUMENT R.R. SPIKE

~~ON SURFACE~~ - BELOW 4"

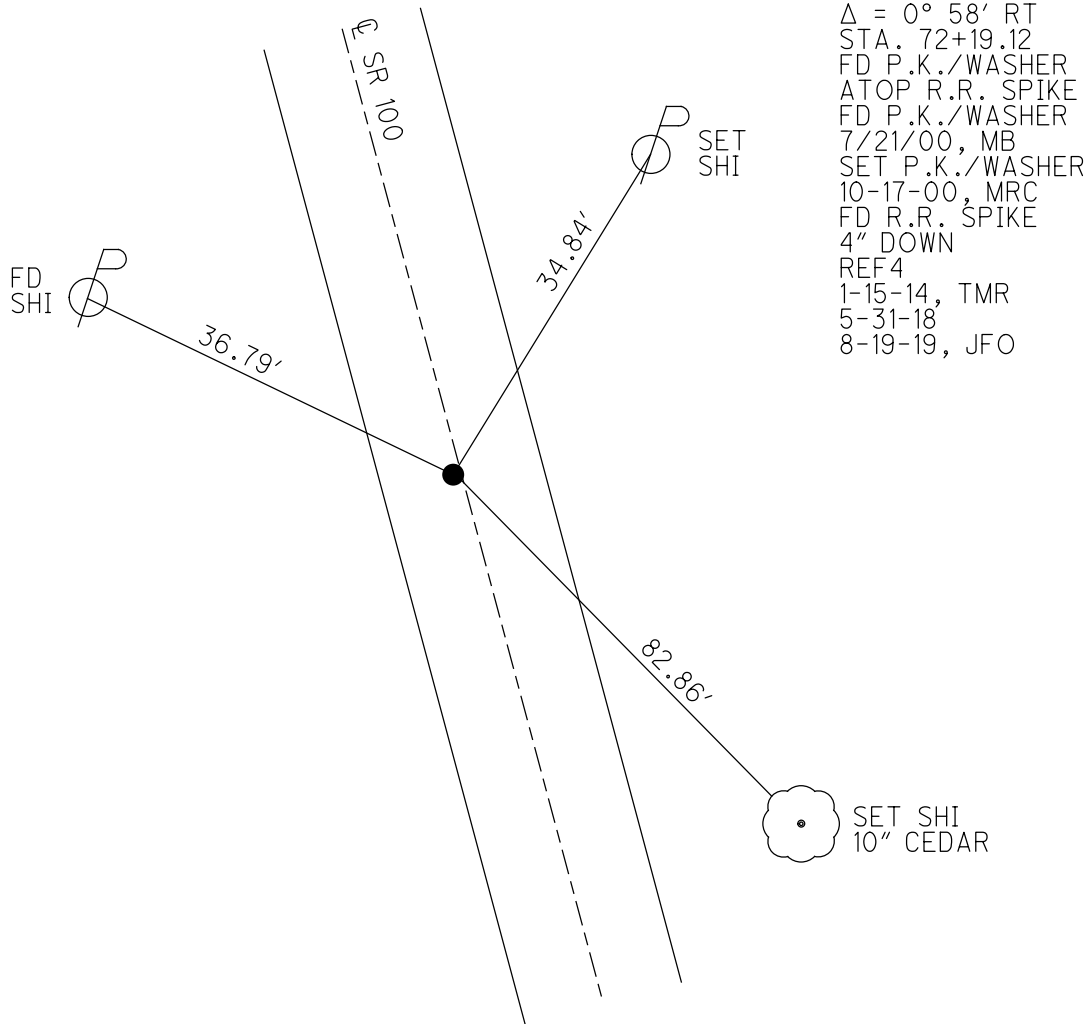
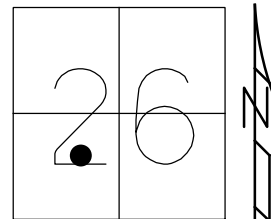
OFFSET  $\odot$  PAVEMENT 0.2' LT : ~~RT~~

9.3' TO LT EDGE PAVEMENT

STATION: 72+18.73

HORZ. DATUM: NAD83(2011) GEOID: GEOID 12A

GRID: NORTHING: 490429.055 EASTING: 1801128.538

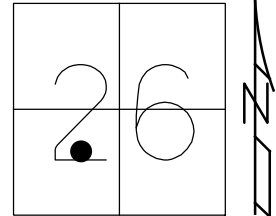


RECORD: P.I.  
 $\Delta = 0^\circ 58' RT$   
 STA. 72+19.12  
 FD P.K./WASHER  
 ATOP R.R. SPIKE  
 FD P.K./WASHER  
 7/21/00, MB  
 SET P.K./WASHER  
 10-17-00, MRC  
 FD R.R. SPIKE  
 4" DOWN  
 REF4  
 1-15-14, TMR  
 5-31-18  
 8-19-19, JFO

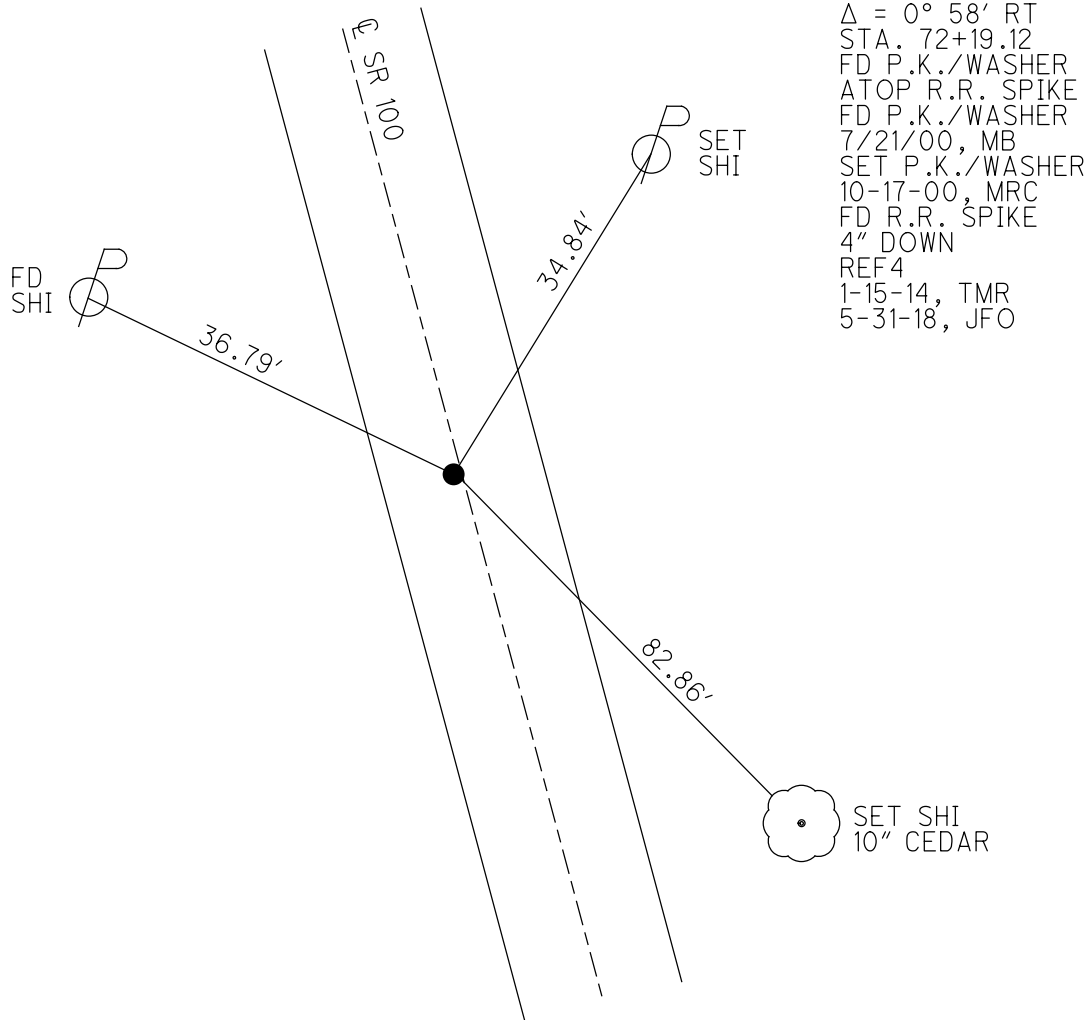
O.D.O.T. DISTRICT 2 SURVEY OFFICE (USE ONLY)

PERSONNEL \_\_\_\_\_ REFERENCE NO. 4 SHEET 4 OF 12  
 NOTES HAGEMEGER DATE 5/31/18 ROUTE SR 100  
 H.C. O'DONNELL WEATHER SUNNY COUNTY SENECA  
 R.C. TRENKA TEMP. 78° TOWNSHIP EDEN  
 DWG BY MILLER PID 93677 SECTION 26  
 T 1 N R 15 E

TYPE MONUMENT R.R. SPIKE  
~~ON SURFACE~~ - BELOW 4"  
 OFFSET  $\varnothing$  PAVEMENT 0.2' LT : ~~RT~~  
9.3' TO LT EDGE PAVEMENT  
 STATION: 72+18.73



HORZ.DATUM: NAD83(2011) GEOID: GEOID 12A  
 GRID: NORTHING: 490429.055 EASTING: 1801128.538



RECORD: P.I.  
 $\Delta = 0^\circ 58' RT$   
 STA. 72+19.12  
 FD P.K./WASHER  
 ATOP R.R. SPIKE  
 FD P.K./WASHER  
 7/21/00, MB  
 SET P.K./WASHER  
 10-17-00, MRC  
 FD R.R. SPIKE  
 4" DOWN  
 REF4  
 1-15-14, TMR  
 5-31-18, JFO

# O.D.O.T. DISTRICT 2 SURVEY OFFICE

PERSONNEL

REFERENCE NO. 4

SHEET 4 OF 31

NOTES CANTERBURY

H.C. BARNHISEL

R.C. MOSER

DATE 7-21-00

WEATHER FAIR

TEMP. +72°

ROUTE #100

COUNTY SENECA

TOWNSHIP EDEN

SECTION 26

T1NR15E

TYPE MONUMENT P.K. & WASHER

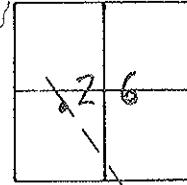
ON SURFACE - ~~BELOW~~ ON SURFACE

LEFT-~~Q~~ PAV'T. - ~~RIGHT~~ 0.2' LT Q PAVT.

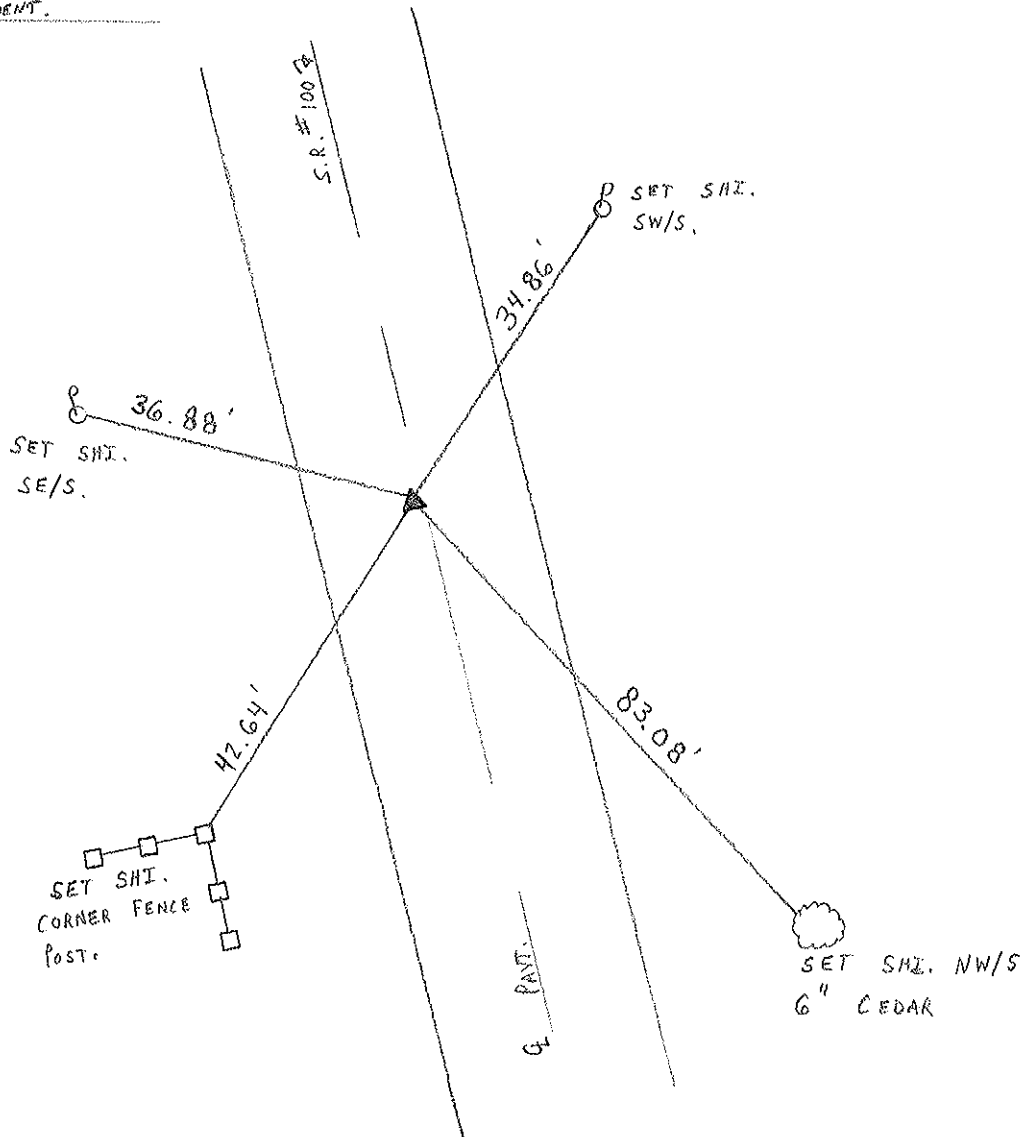
9.3' TO LT EDGE PAVEMENT

S.L.M. 72+06

RESET P.K. & WASHER  
 10-17-00  
 M.R.C.



RECORD: P.I.  $\Delta = 00^\circ - 58' - 00''$  RT.  
 72+19.12 P.K. & WASHER ATOP R.R.  
 SPR. - SPLIT OF PAVEMENT.



O.D.O.T. DISTRICT 2 SURVEY OFFICE

PERSONNEL \_\_\_\_\_

REFERENCE NO. \_\_\_\_\_

SHEET 4 OF \_\_\_\_\_

NOTES Cronin

H.C. Ripple

R.C. Barbour

DATE 11/02/86

WEATHER overcast

TEMP. 50°

ROUTE # 100

COUNTY Seneca

TOWNSHIP Eden

SECTION 26

T 1 N R 15 E

TYPE MONUMENT P.K. & washer

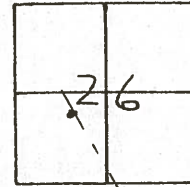
ON SURFACE - BELOW on surface

LEFT- & PAV'T. - RIGHT & Pav't

TO \_\_\_\_\_ EDGE PAVEMENT

S.L.M. \_\_\_\_\_

④



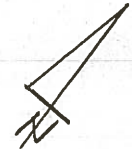
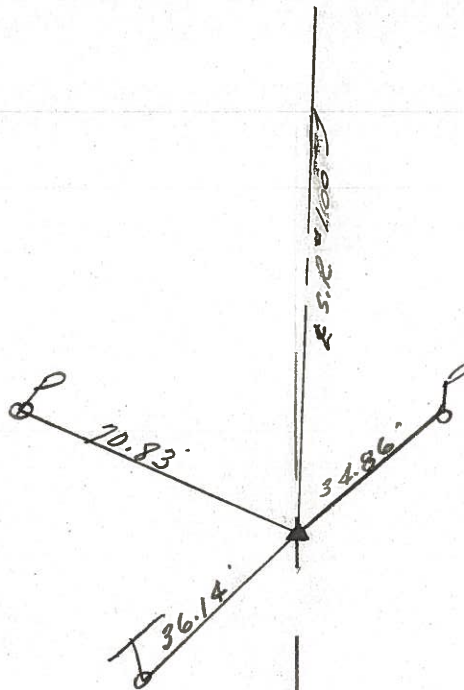
P.I.

Δ = 00° 58' 00" Rt.

72+19.12

P.K. & washer atop R.R.

spike - split of pavement



Q.D.O.T. DISTRICT 2 SURVEY OFFICE

Sht. 4 of

County SENECA S.R. 100

Township EDEN

Section 26

T/LN, R/E

Personnel CRONIN

RIPPLE

GEYMAN

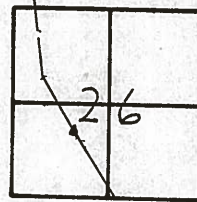
MOSSER

BARBOUR

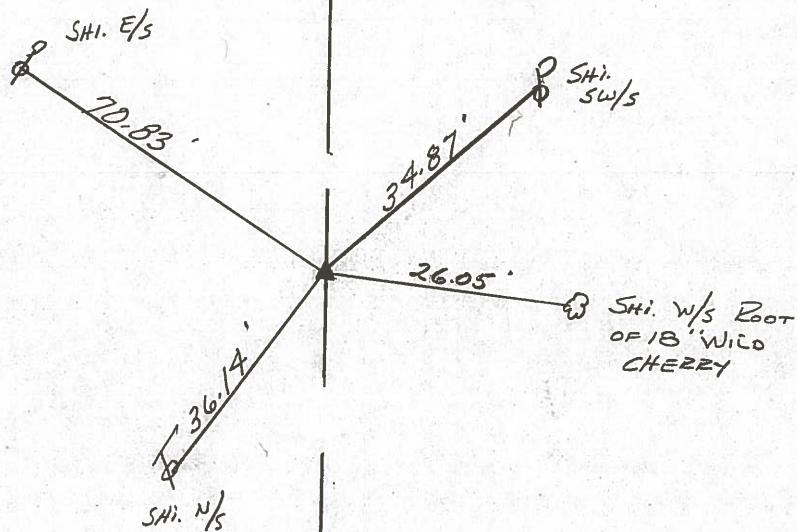
Date 8/5/81 Drawn 8/10/81

Weather SUNNY

Temp. 72°



#4



P.I. - Δ = 00° 58' Rt.

724.19.12

R.L. spike 1/2" ± below

surface - split of paint.

Top of Hill

S.R. #100

County SENECA S.R. 100

Township EDEN

Section 26

T N, R E

Personnel Hoffman

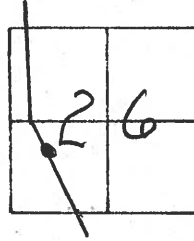
Householder

# (4)

Date 6-11-81

Weather Clear

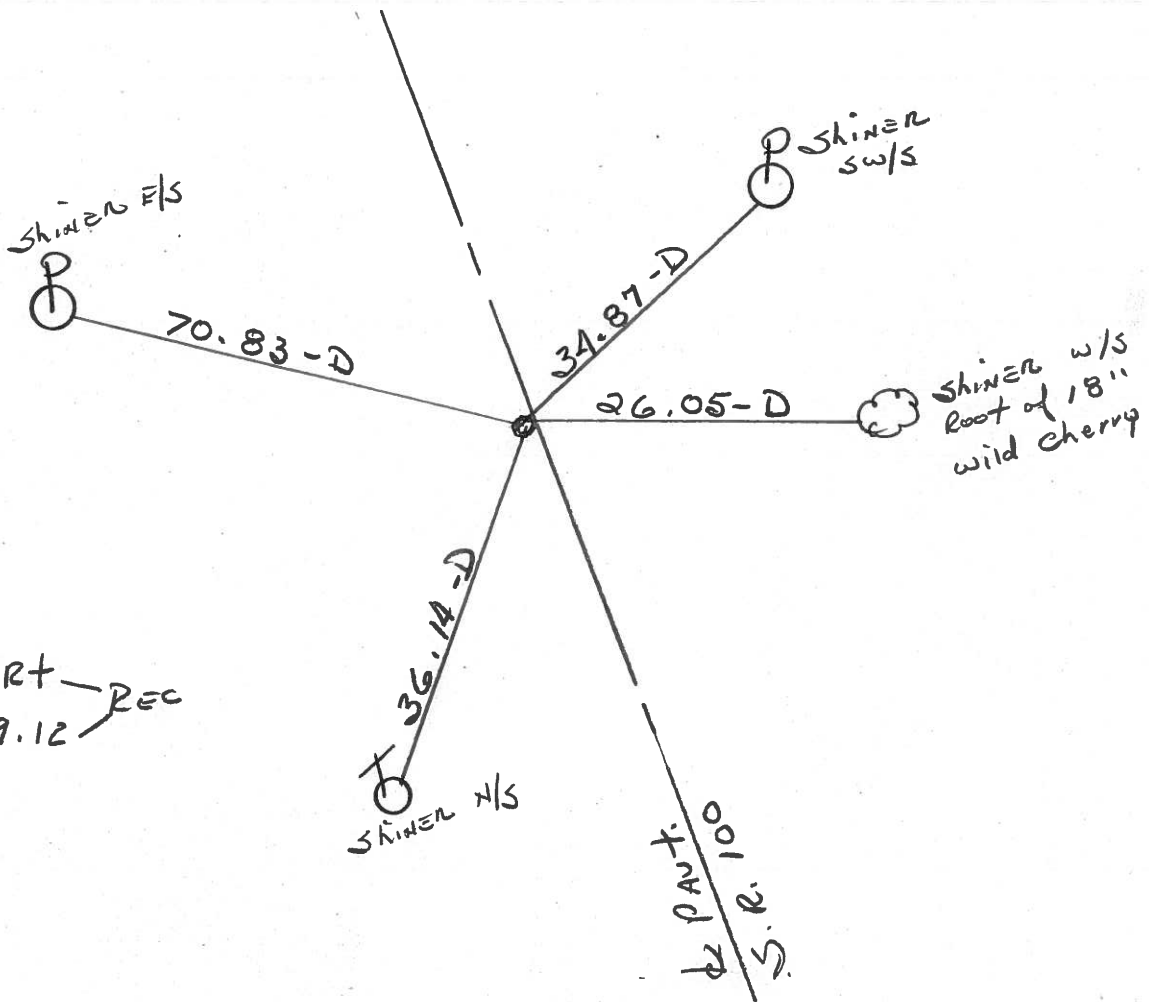
Temp. +80°



Fd. R.R. SPK @ SURFACE  
10.5' to E. Edge PAVT.  
9.4' to W. Edge PAVT.

Project STA ± 72+38

TOP of Hill



P.I.

Δ: 0°-58' RT — REC  
STA. 72+19.12

PERSONNEL	TITLE	PERSONNEL	TITLE
Cronin		Schneider	
Pipple		Barbour	
Geyman			

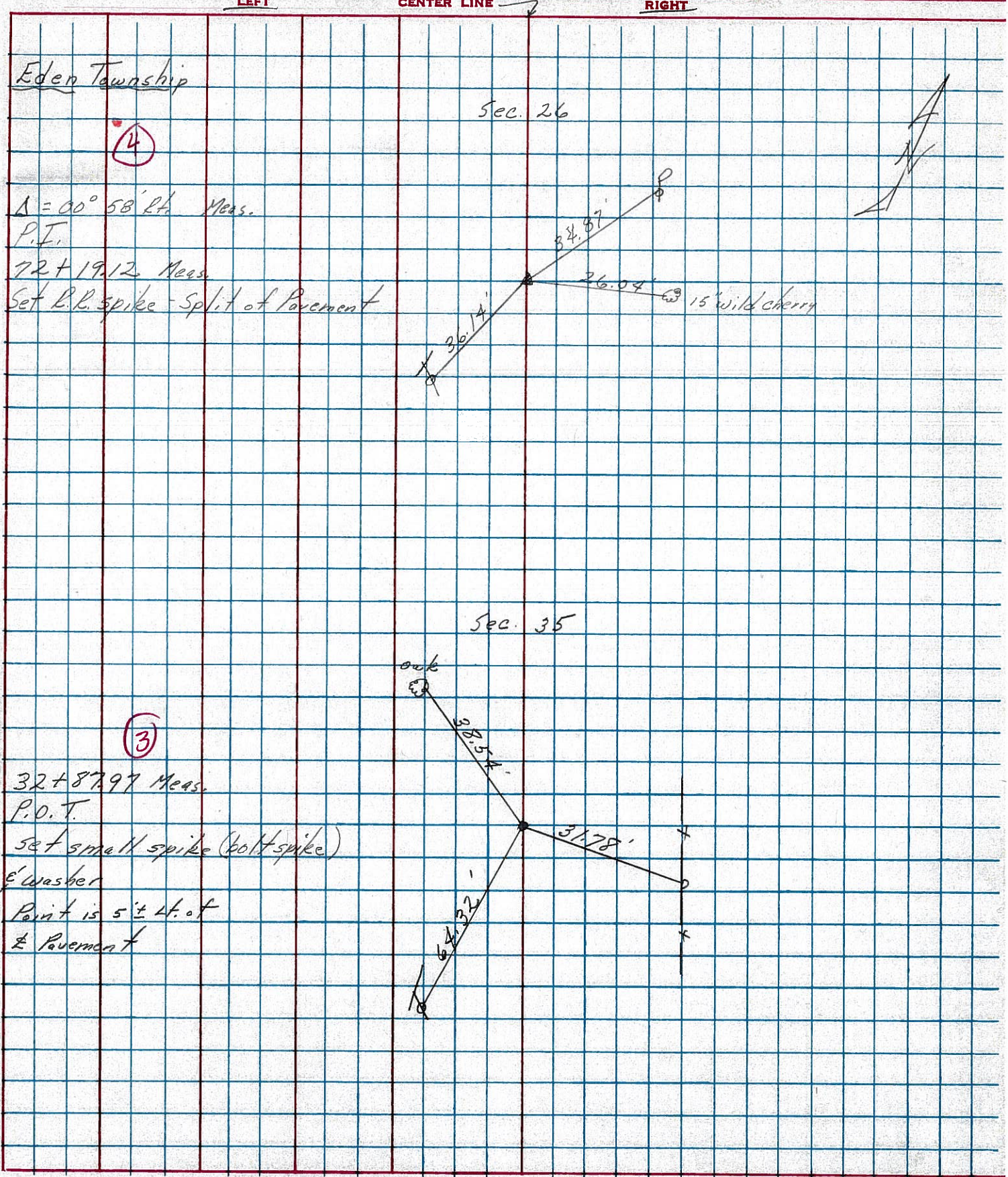
COUNTY Seneca DATE 9/14/76

S. R. #100 WEATHER sunny

SEC. Crawford Co. Line North TEMP 75°

DESCRIPTION Ties for Control Points

JOB NO. \_\_\_\_\_



Eden Township

Sec. 26

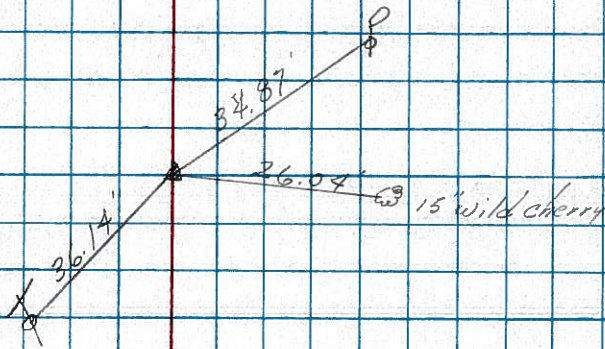
(4)

$\Delta = 00^\circ 58' \text{ R.A. Meas.}$

P.I.

72 + 19.12 Meas.

Set R.R. spike - Spl. of Pavement



Sec. 35

(3)

32 + 87.97 Meas.

P.O.T.

Set small spike (bolt spike)

E washer

Point is 5' ± Lt. of

± Pavement

