

O.D.O.T. DISTRICT 2 SURVEY OFFICE (USE ONLY)

PERSONNEL

REFERENCE NO. 5

SHEET 5 OF 46

NOTES RHOADES

DATE 6/17/22

ROUTE SR 100

H.C. AUBLE

WEATHER SUNNY

COUNTY SENECA

R.C. WHITAKER
NIESE

TEMP. 84°

TOWNSHIP EDEN

DWG BY WHITAKER PID 95778

SECTION 26

T 1 N R 15 E

TYPE MONUMENT MAG/WASHER

ON SURFACE - ~~BELOW~~ ON

OFFSET 0.9' TO LT EDGE PAVEMENT 8.8' LT : RT

0.9' TO LT EDGE PAVEMENT

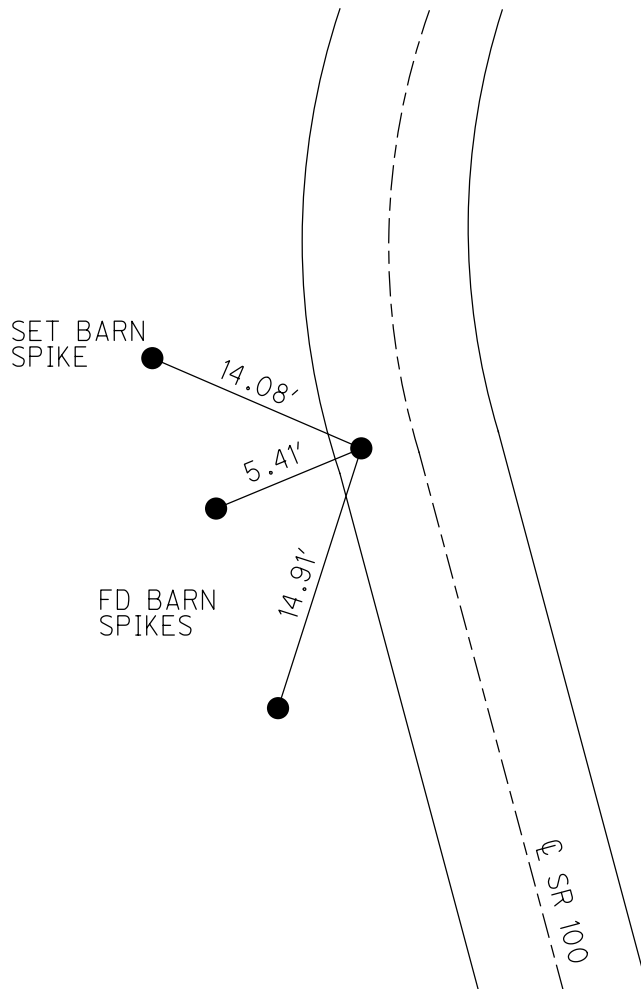
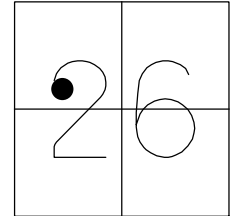
STATION: 85+80.27

HORIZ.DATUM: NAD83(2011)

GEOID: 2012A

GRID: NORTHING: 491656.809

EASTING: 1800539.981

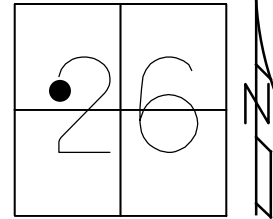


RECORD: P.I.
 $\Delta = 14^\circ 30' RT$
 STA. 85+80.45
 P.K.SHANK
 ATOP P.K./WASHER
 ATOP R.R.SPIKE
 FD P.K.SHANK
 7/21/00, MB
 SET P.K./WASHER
 10-17-00, MRC
 FD P.K./WASHER
 REF5
 1-15-14, TMR
 FD P.K./WASHER
 5-31-18
 8-19-19, JFO
 SET MAG/WASHER
 NEWREF5
 6/17/22, DSA

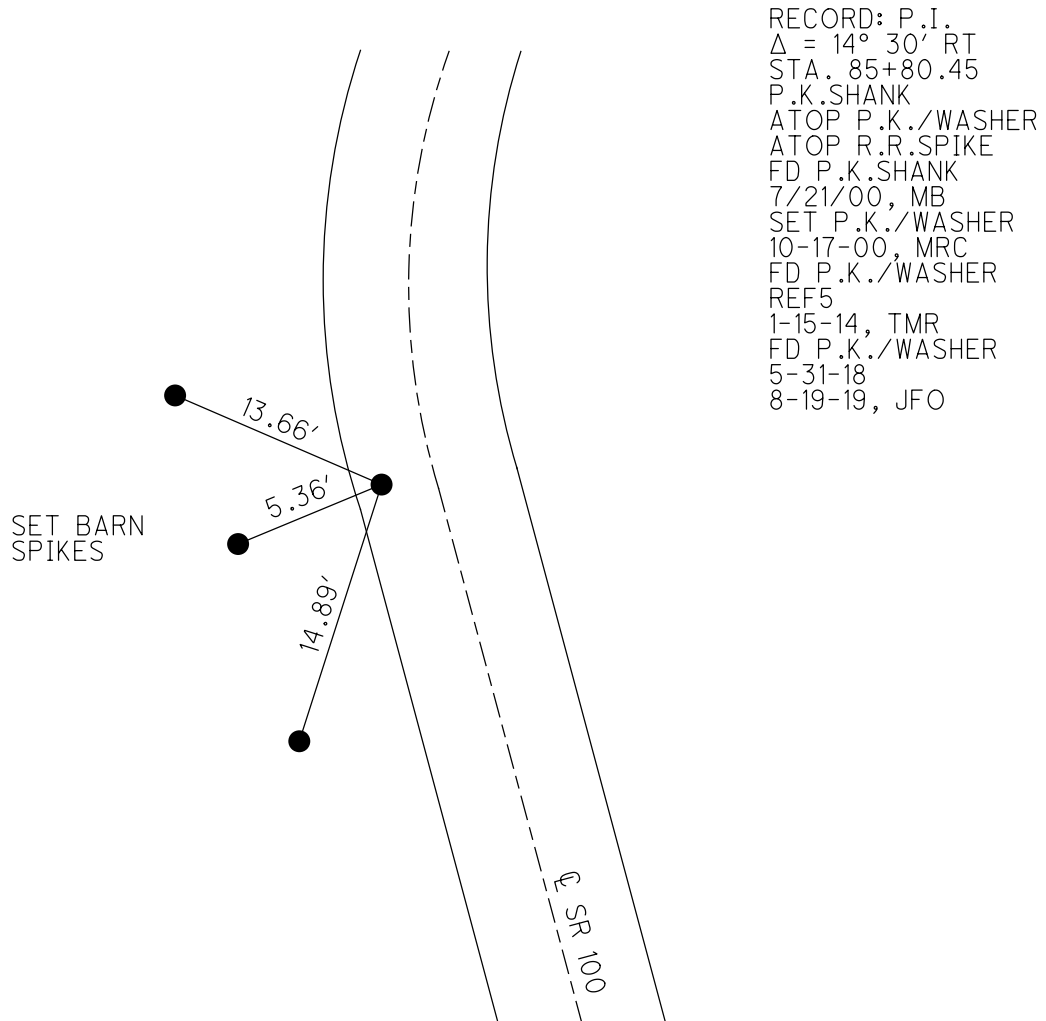
O.D.O.T. DISTRICT 2 SURVEY OFFICE (USE ONLY)

PERSONNEL _____ REFERENCE NO. 5 SHEET 5 OF 38
 NOTES HAGEMEGER DATE 5/31/18 ROUTE SR 100
 H.C. O'DONNELL WEATHER SUNNY COUNTY SENECA
 R.C. TRENKA TEMP. 79° TOWNSHIP EDEN
 _____ SECTION 26
 DWG BY MILLER PID 107060 T 1 N R 15 E

TYPE MONUMENT P.K./WASHER
 ON SURFACE - ~~BELOW~~ ON
 OFFSET CL PAVEMENT 8.8' LT : ~~RT~~
0.9' TO LT EDGE PAVEMENT
 STATION: 85+80.27



HORZ.DATUM: NAD83(2011) GEOID: GEOID 12A
 GRID: NORTHING: 491656.809 EASTING: 1800539.981

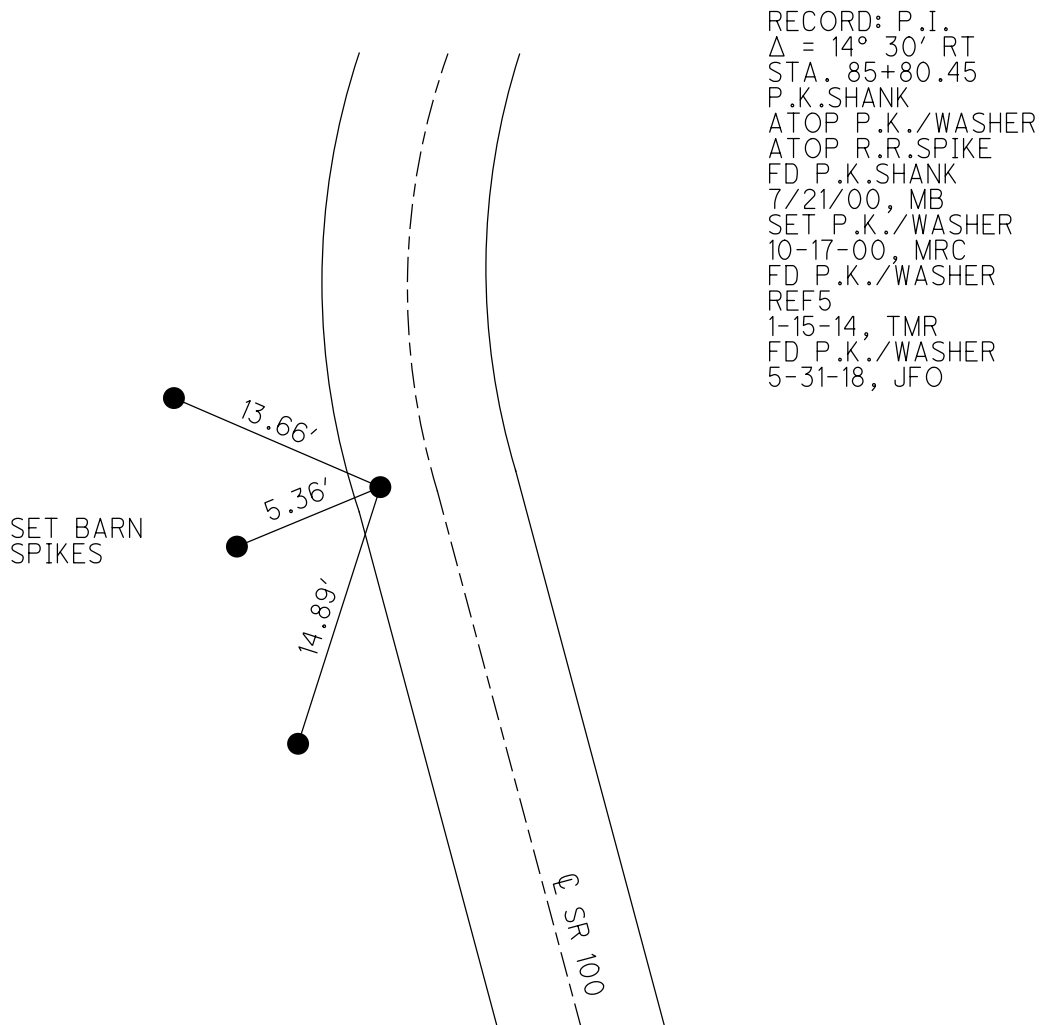
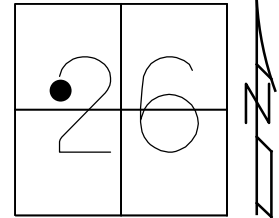


O.D.O.T. DISTRICT 2 SURVEY OFFICE (USE ONLY)

PERSONNEL _____ REFERENCE NO. 5 SHEET 5 OF 12
 NOTES HAGEMEGER DATE 5/31/18 ROUTE SR 100
 H.C. O'DONNELL WEATHER SUNNY COUNTY SENECA
 R.C. TRENKA TEMP. 79° TOWNSHIP EDEN
 SECTION 26
 DWG BY MILLER PID 93677 T 1 N R 15 E

TYPE MONUMENT P.K./WASHER
 ON SURFACE - ~~BELOW~~ ON
 OFFSET 0.9' TO LT EDGE PAVEMENT
 STATION: 85+80.27

HORIZ.DATUM: NAD83(2011) GEOID: GEOID 12A
 GRID: NORTHING: 491656.809 EASTING: 1800539.981



O.D.O.T. DISTRICT 2 SURVEY OFFICE

PERSONNEL _____

REFERENCE NO. 5

SHEET 5 OF 31

NOTES CANTERBURY

H.C. BARNHISEL

R.C. MOSEY

DATE 7-21-00

WEATHER FAIR

TEMP. +72°

ROUTE # 100

COUNTY SENECA

TOWNSHIP EDEN

SECTION 26

T 1 N R 15 E

TYPE MONUMENT P.K. SHANK

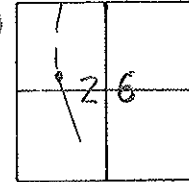
ON SURFACE - ~~BELOW~~ ON SURFACE

LEFT - Q PAV'T. - RIGHT 8.8' LT Q PAVT.

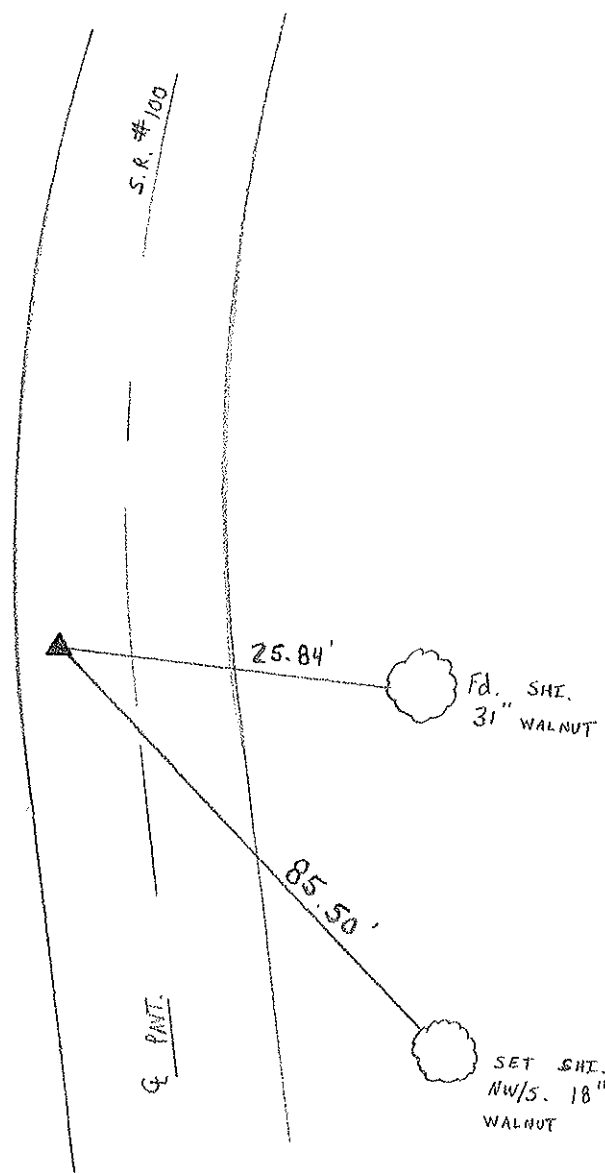
0.9' TO LT EDGE PAVEMENT

S.L.M. 82 + 36

RESET P.K. + WASHER
 10-17-00
 M.R.C.



RECORD: P.I. $\Delta = 14^{\circ} - 30' - 00''$ RT
 STN 85 + 80.45 HEADLESS P.K. ATOP
 P.K. & WASHER ATOP R.R. SPK.



O.D.O.T. DISTRICT 2 SURVEY OFFICE

PERSONNEL

REFERENCE NO. 5

SHEET 5 OF

NOTES Cronin

H.C. Ripple

R.C. Barbour

DATE 11/07/86

WEATHER overcast

TEMP. 50°

ROUTE #100

COUNTY Seneca

TOWNSHIP Eden

SECTION 26

T 1 N R 15 E

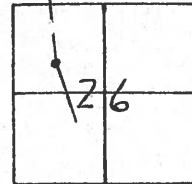
TYPE MONUMENT Headless P.K.

ON SURFACE - BELOW on surface

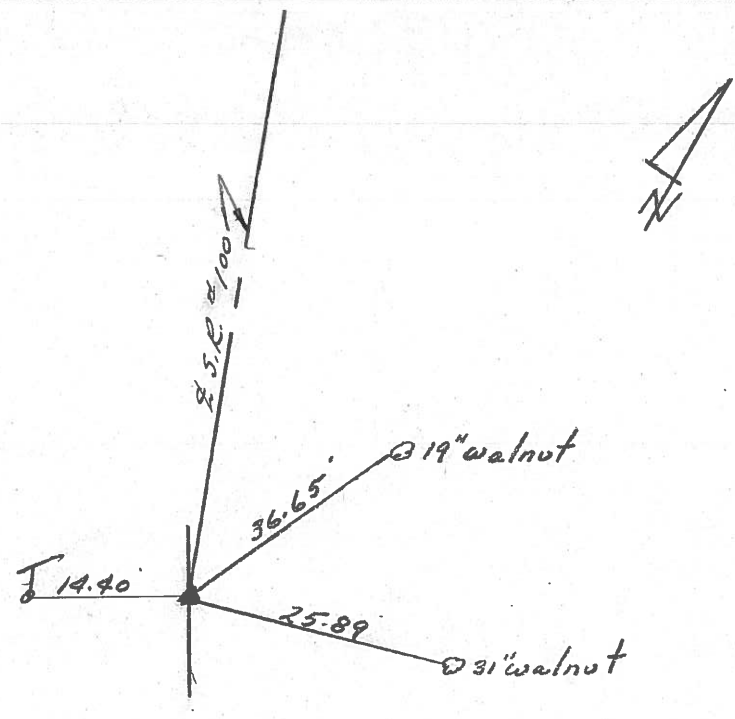
LEFT - ℄ PAV'T. - RIGHT ℄ Lt. & Pavt

TO EDGE PAVEMENT

S.L.M. 1.625'



P.I.
Δ = 14°30'00" Rt.
85+80.45
Headless P.K. at top P.K. &
washer at top R.R. spike



County SENECA S.R. 100

Township EDEN

Section 26

T/LN, RISE

Personnel CRONIN

RIPPLE

GEYMAN

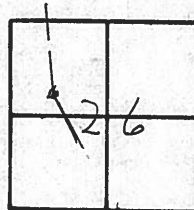
MOSSER

BARBOUR

Date 8/5/81 DRAWN 8/10/81

Weather SUNNY

Temp. 72°

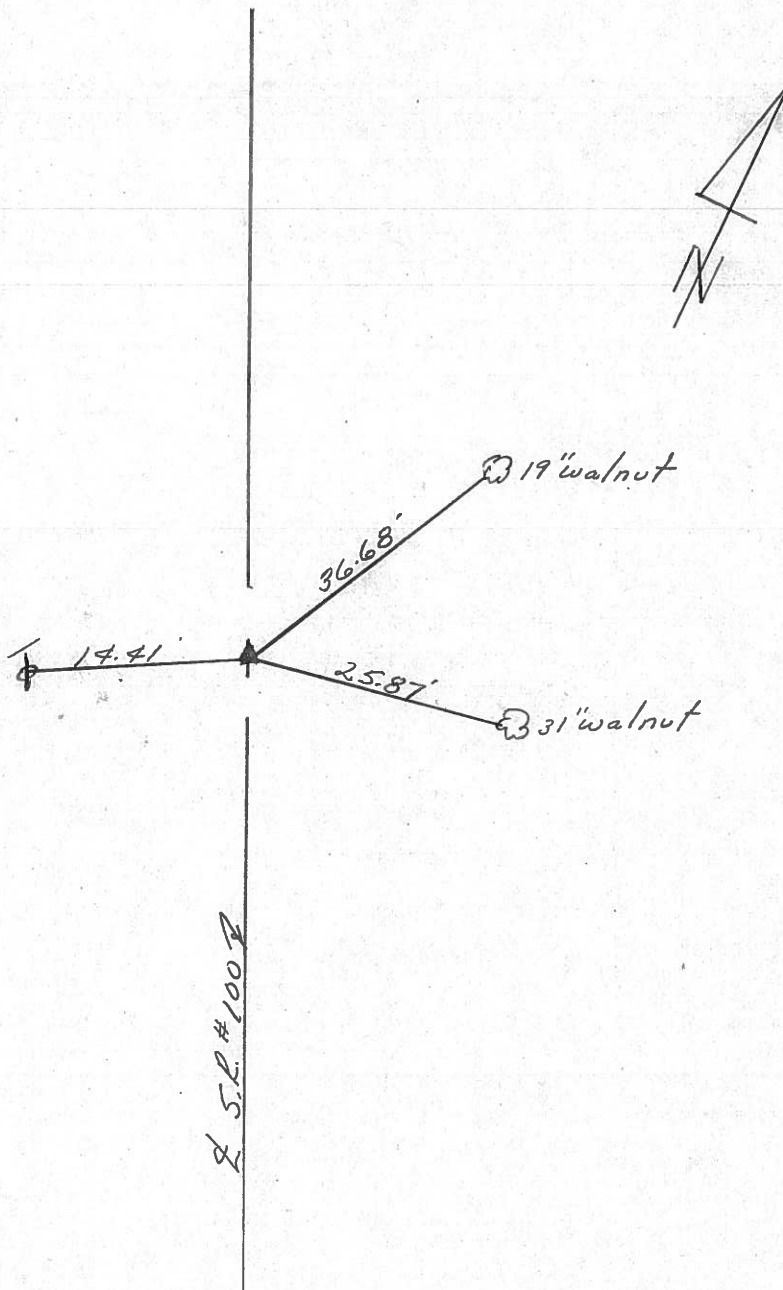


⑤

P.I. - $\Delta = 14^{\circ}30'$ Rt.

85+80.45

Reset P.K. & washer at top
R.R. spike



S.R. #100

County SENECA S.R. 100

Township EDEN

Section 26

TLN, RISE

Personnel Hoffman

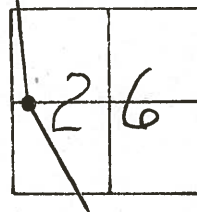
Householder

#5

Date 6-11-81

Weather clear

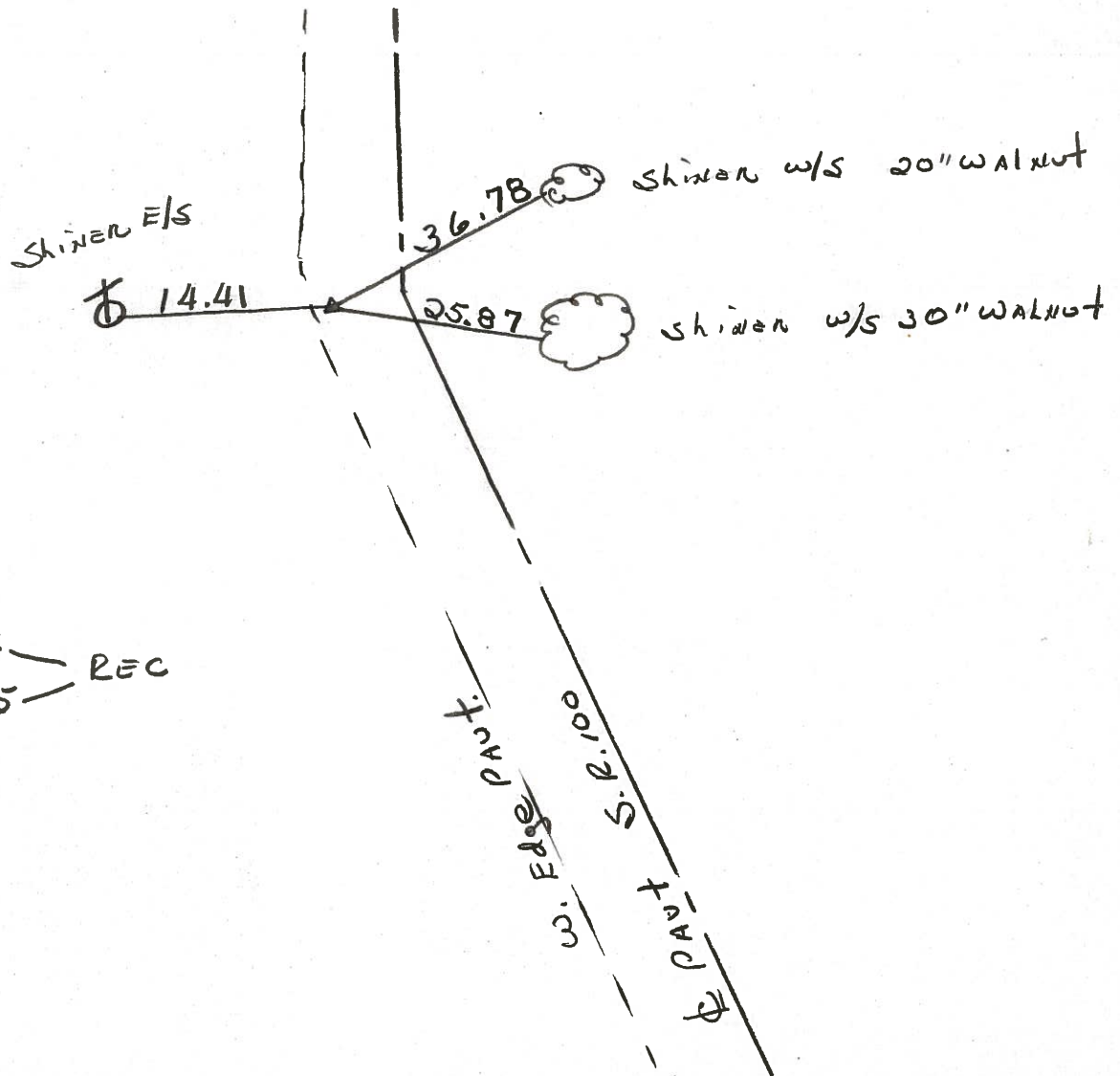
Temp. +80°



Fd. R.R. Spk @ surface
1.2' to w. Edge PAUT.
9.5' w. of & PAUT

Project STA ± 86+02

RESET P.K. WASHER



P.I.
Δ = 14°-30' Rt. — REC
STA. 85+80.45 —

PERSONNEL TITLE PERSONNEL TITLE

Cronin Schneider
Ripple Barbaer
Geyman

COUNTY Seneca

DATE 8/3/75

S. R. # 100

WEATHER sunny

SEC. Crawford Co. Line North TEMP. 75°

DESCRIPTION

Ties for Control Points

JOB NO.

LEFT

CENTER LINE

RIGHT

Eden Township

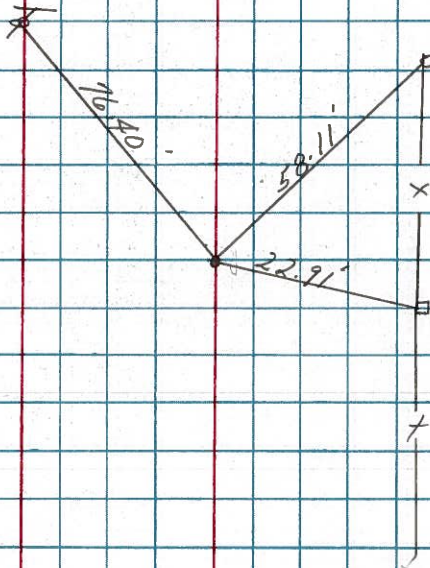
Sec. 26

(6)

P.O.T.

96+91.57 Meas.

Set small bolt spike
& washer - used split
of Pavement



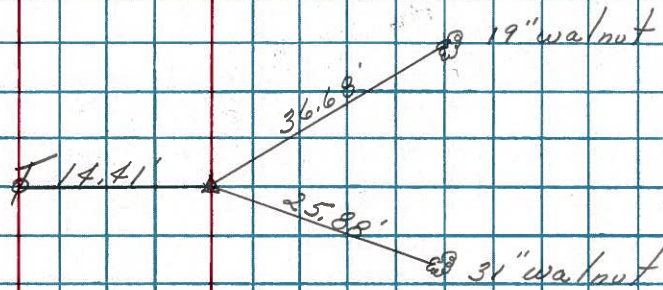
(5)

$\Delta = 17^{\circ}30'$ Pt. Meas.

P.I.

85+80.45 Meas.

Set R.L. spike
Used split of Pavement
on Back Tangent



Sec. 26