

O.D.O.T. DISTRICT 2 SURVEY OFFICE (USE ONLY)

PERSONNEL

REFERENCE NO. 6

SHEET 6 OF 46

NOTES RHOADES DATE 6/17/22  
 H.C. AUBLE WEATHER SUNNY  
 R.C. WHITAKER TEMP. 84°  
NIESE

ROUTE SR 100  
 COUNTY SENECA  
 TOWNSHIP EDEN  
 SECTION 26  
 T 1 N R 15 E

DWG BY WHITAKER PID 95778

TYPE MONUMENT MAG/WASHER

ON SURFACE - ~~BELOW~~ ON

OFFSET 0.2' ET : RT

9.6' TO RT EDGE PAVEMENT

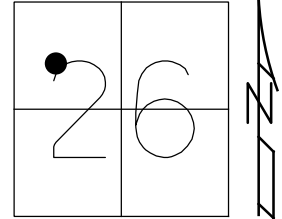
STATION: 95+91.32

HORZ.DATUM: NAD83(2011)

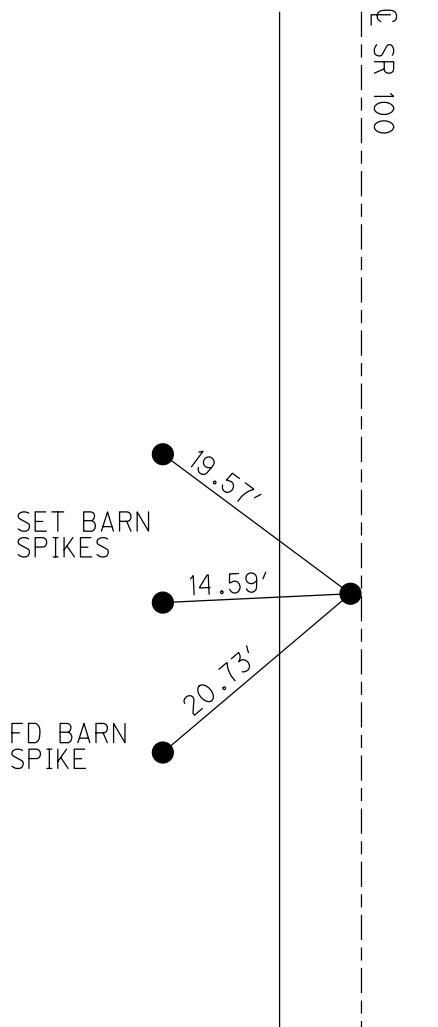
GEOID: 2012A

GRID: NORTHING: 492747.075

EASTING: 1800325.855



RECORD: P.O.T.  
 STA. 96+91.57  
 FD P.K./WASHER  
 ATOP P.K./WASHER  
 ATOP BOAT SPIKE  
 FD P.K./WASHER  
 7/21/00, MB  
 SET P.K./WASHER  
 10-17-00, MRC  
 FD P.K./WASHER  
 REF6  
 1-15-14, TMR  
 FD P.K./WASHER  
 2" DOWN  
 REF6  
 5-31-18  
 8-19-19, JFO  
 SET MAG/WASHER  
 NEWREF6  
 6/17/22, DSA



O.D.O.T. DISTRICT 2 SURVEY OFFICE (USE ONLY)

PERSONNEL \_\_\_\_\_ REFERENCE NO. 6 SHEET 6 OF 38  
 NOTES HAGEMEGER DATE 5/31/18 ROUTE SR 100  
 H.C. O'DONNELL WEATHER SUNNY COUNTY SENECA  
 R.C. TRENKA TEMP. 78° TOWNSHIP EDEN  
 \_\_\_\_\_ SECTION 26  
 DWG BY MILLER PID 107060 T 1 N R 15 E

TYPE MONUMENT MAG/WASHER

~~ON SURFACE~~ - BELOW 2"

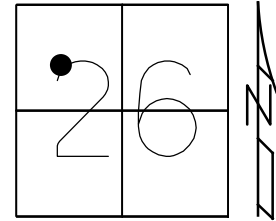
OFFSET  $\odot$  PAVEMENT 0.2'  $\perp$  : RT

9.6' TO RT EDGE PAVEMENT

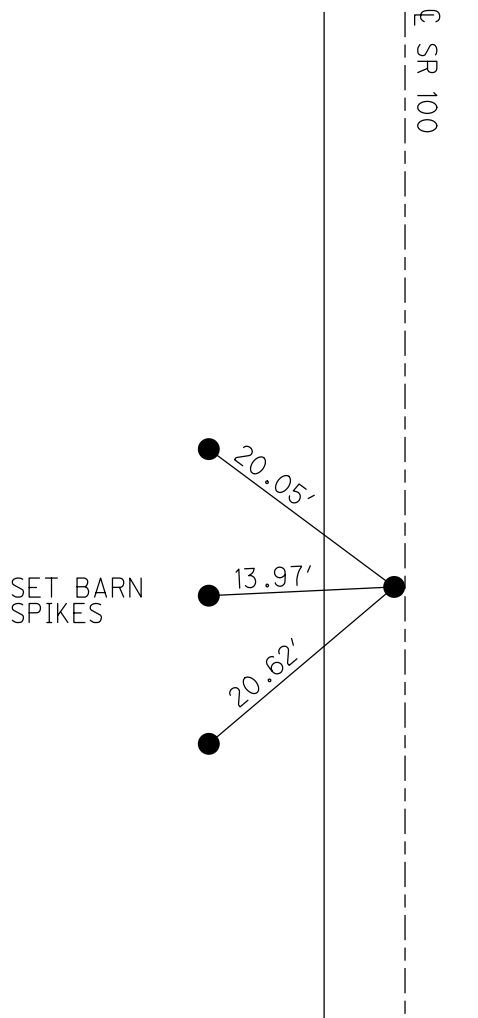
STATION: 96+91.32

HORZ. DATUM: NAD83(2011) GEOID: GEOID 12A

GRID: NORTHING: 492747.042 EASTING: 1800325.880



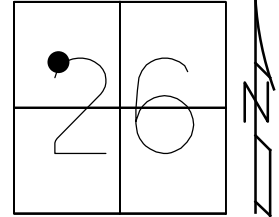
RECORD: P.O.T.  
 STA. 96+91.57  
 FD P.K./WASHER  
 ATOP P.K./WASHER  
 ATOP BOAT SPIKE  
 FD P.K./WASHER  
 7/21/00, MB  
 SET P.K./WASHER  
 10-17-00, MRC  
 FD P.K./WASHER  
 REF6  
 1-15-14, TMR  
 FD P.K./WASHER  
 2" DOWN  
 REF6  
 5-31-18  
 8-19-19, JFO



O.D.O.T. DISTRICT 2 SURVEY OFFICE (USE ONLY)

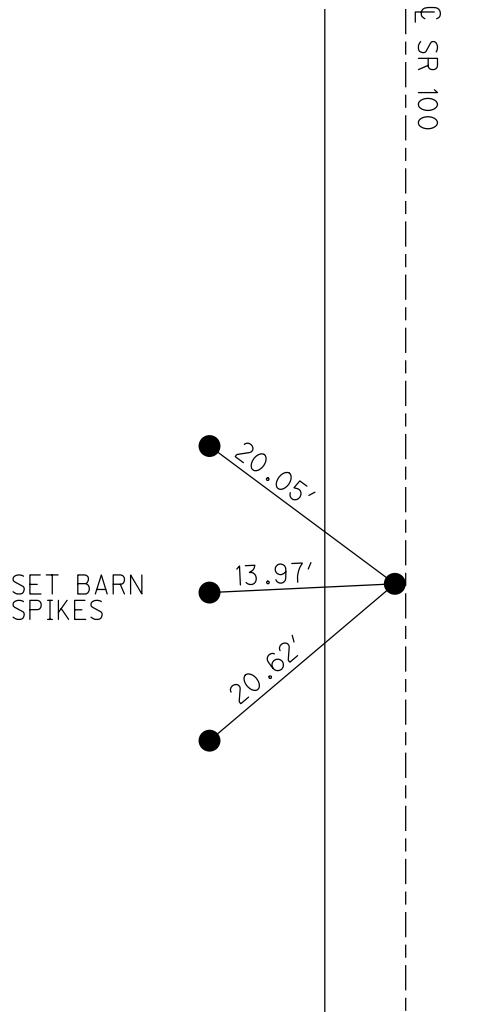
PERSONNEL \_\_\_\_\_ REFERENCE NO. 6 SHEET 6 OF 12  
 NOTES HAGEMEGER DATE 5/31/18 ROUTE SR 100  
 H.C. O'DONNELL WEATHER SUNNY COUNTY SENECA  
 R.C. TRENKA TEMP. 78° TOWNSHIP EDEN  
 DWG BY MILLER PID 93677 SECTION 26  
 T 1 N R 15 E

TYPE MONUMENT MAG/WASHER  
~~ON SURFACE~~ - BELOW 2"  
 OFFSET  $\varnothing$  PAVEMENT 0.2' ~~RT~~ : RT  
9.6' TO RT EDGE PAVEMENT  
 STATION: 96+91.32



HORZ.DATUM: NAD83(2011) GEOID: GEOID 12A  
 GRID: NORTHING: 492747.047 EASTING: 1800325.880

RECORD: P.O.T.  
 STA. 96+91.57  
 FD P.K./WASHER  
 ATOP P.K./WASHER  
 ATOP BOAT SPIKE  
 FD P.K./WASHER  
 7/21/00, MB  
 SET P.K./WASHER  
 10-17-00, MRC  
 FD P.K./WASHER  
 REF6  
 1-15-14, TMR  
 FD P.K./WASHER  
 2" DOWN  
 REF6  
 5-31-18, JFO



O.D.O.T. DISTRICT 2 SURVEY OFFICE

PERSONNEL

REFERENCE NO. 6

SHEET 6 OF 31

NOTES CANTERBURY

H.C. BARNHISEL

R.C. MOSEK

DATE 7-21-00

WEATHER FAIR

TEMP. +72°

ROUTE #100

COUNTY SENECA

TOWNSHIP EDEN

SECTION 26

T. 1 N. R. 15 E.

TYPE MONUMENT P.K. & WASHER

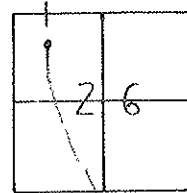
ON SURFACE - ~~BELOW~~ ON SURFACE

~~LEFT - & PAV'T.~~ - RIGHT 0.2' RT & PAVT.

9.6' TO RT EDGE PAVEMENT

S.L.M. 96 + 71

RESET P.K. & WASHER  
10-17-00  
M.R.C.



Fd. SHJ.  
SE/S.

76.40'

S.R. #100

RECORD: P.O.T. 96+91.57

P.K. & WASHER ATOP P.K. & WASHER

ATOP BOAT SPR.

0.2' PAVT.

O.D.O.T. DISTRICT 2 SURVEY OFFICE

PERSONNEL

REFERENCE NO. 6

SHEET 6 OF       

NOTES Cronin

H.C. Ripple

R.C. Barbour

DATE 11/07/86

WEATHER overcast

TEMP. 50°

ROUTE #100

COUNTY Seneca

TOWNSHIP Eden

SECTION 26

T. 1 N. R. 15 E.

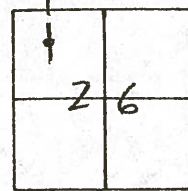
TYPE MONUMENT P.K. & washer

ON SURFACE - BELOW on surface

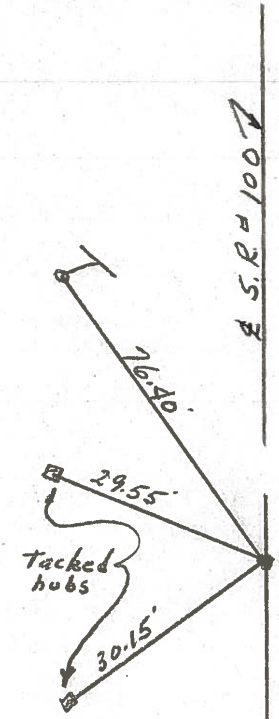
LEFT - ☉ PAV'T. - RIGHT ☉ Pavt.

TO        EDGE PAVEMENT

S.L.M. 1.8355 t



P.O.T.  
96+91.57  
P.K. & washer atop P.K. & washer  
atop boat spike



County SENECA S.R. 100

Township EDEN

Section 26

T/LN, RISE

Personnel CROWIN

RIPPLE

GEYMAN

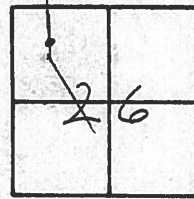
MOSSER

BARBOUR

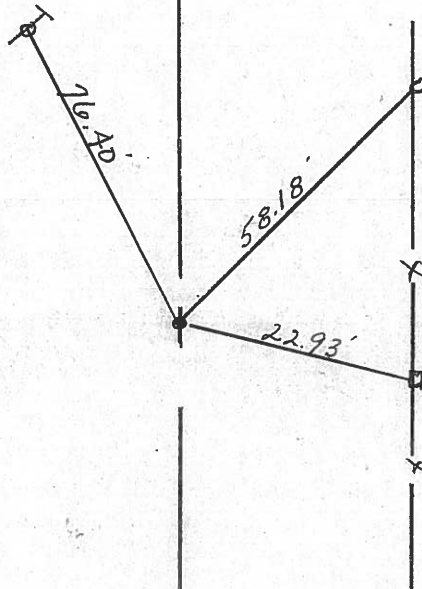
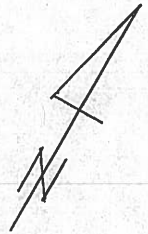
Date 8/5/81 DRAWN 8/10/81

Weather SUNNY

Temp. 72°



6



P.O.T.

96 + 91.57

Reset P.K. & washer at top  
bolt spike.

S.R. 100

County SENECA S.R. 100

Township EDEN

Section 26

T/LN, RISE

Personnel HOFFMAN

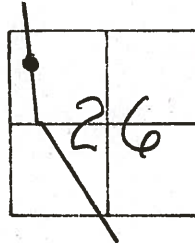
Householder

# 6

Date 6-11-81

Weather clear

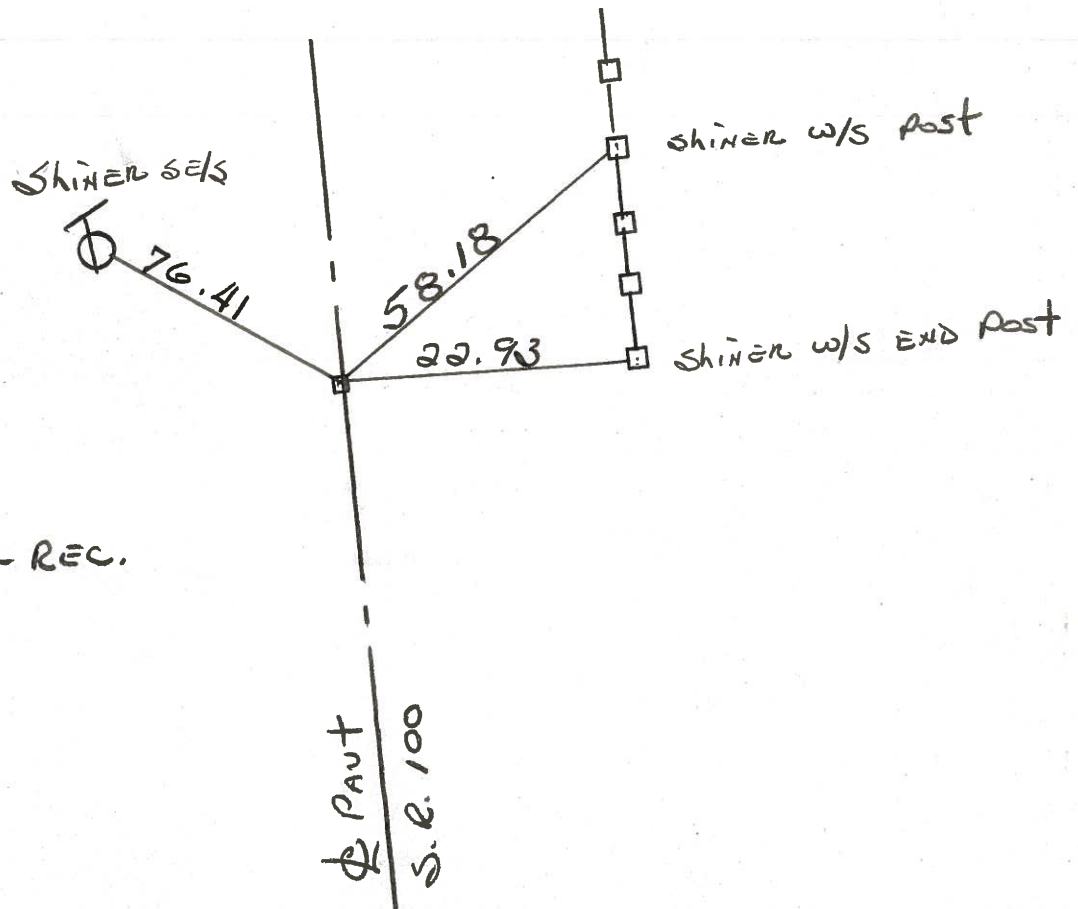
Temp. +85°



Fd. small square bolt @ surface @ ctr. of PAUT.

PROJECT STA ± 97+16

RE-SET P.K. & WASHER



P.O.T.

STA. 96+91.57 - REC.

PERSONNEL	TITLE	PERSONNEL	TITLE	COUNTY	DATE	WEATHER	TEMP.
Cronin		Schneider		Seneca	8/13/75	sunny	75°
Ripple		Barbaor		S. R. # 100			
Geyman				SEC. Crawford Co. Line North			

DESCRIPTION Ties for Control Points JOB NO. \_\_\_\_\_

