

O.D.O.T. DISTRICT 2 SURVEY OFFICE (USE ONLY)

PERSONNEL

REFERENCE NO. 7

SHEET 7 OF 12

NOTES HAGEMEGER

DATE 5/31/18

ROUTE SR 100

H.C. O'DONNELL

WEATHER SUNNY

COUNTY SENECA

R.C. TRENKA

TEMP. 80°

TOWNSHIP EDEN

SECTION 26

DWG BY MILLER

PID 93677

T 1 N R 15 E

TYPE MONUMENT I. BOLT/NUT

~~ON SURFACE~~ - BELOW 2"

OFFSET  $\bar{C}$  PAVEMENT 25.1' LT : ~~RT~~

14.8' TO LT EDGE PAVEMENT

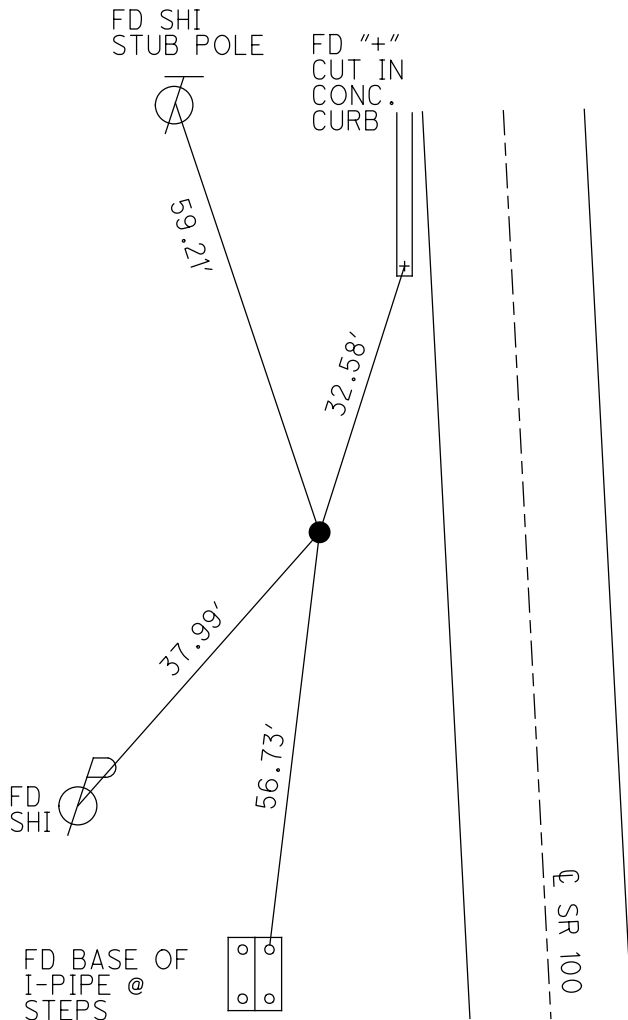
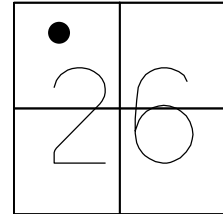
STATION: 106+44.07

HORZ. DATUM: NAD83(2011)

GEOID: GEOID 12A

GRID: NORTHING: 493682.679

EASTING: 1800141.957



RECORD: P.I.  
 STA. 106+45  
 SET I.BOLT  
 1951 PLANS  
 FD I.BOLT  
 1" DOWN  
 10-17-00, MRC  
 FD I.BOLT/NUT  
 2" DOWN  
 REF7  
 1-15-14, TMR  
 5-31-18, JFO

# O.D.O.T. DISTRICT 2 SURVEY OFFICE

PERSONNEL \_\_\_\_\_

REFERENCE NO. 7

SHEET 7 OF 31

NOTES CANTERBURY

H.C. BARNHISEL

R.C. MOSEK

DATE 7-21-00

WEATHER FAIR

TEMP. +72°

ROUTE # 100

COUNTY SENECA

TOWNSHIP EDEN

SECTION 26

T. 1 N. R. 15 E.

TYPE MONUMENT I. Bolt & Nut

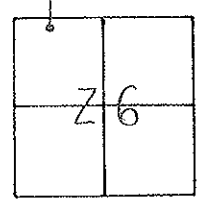
ON SURFACE - BELOW 1" DOWN

LEFT - Q PAV'T. - RIGHT 25.1' LT & PAVT.

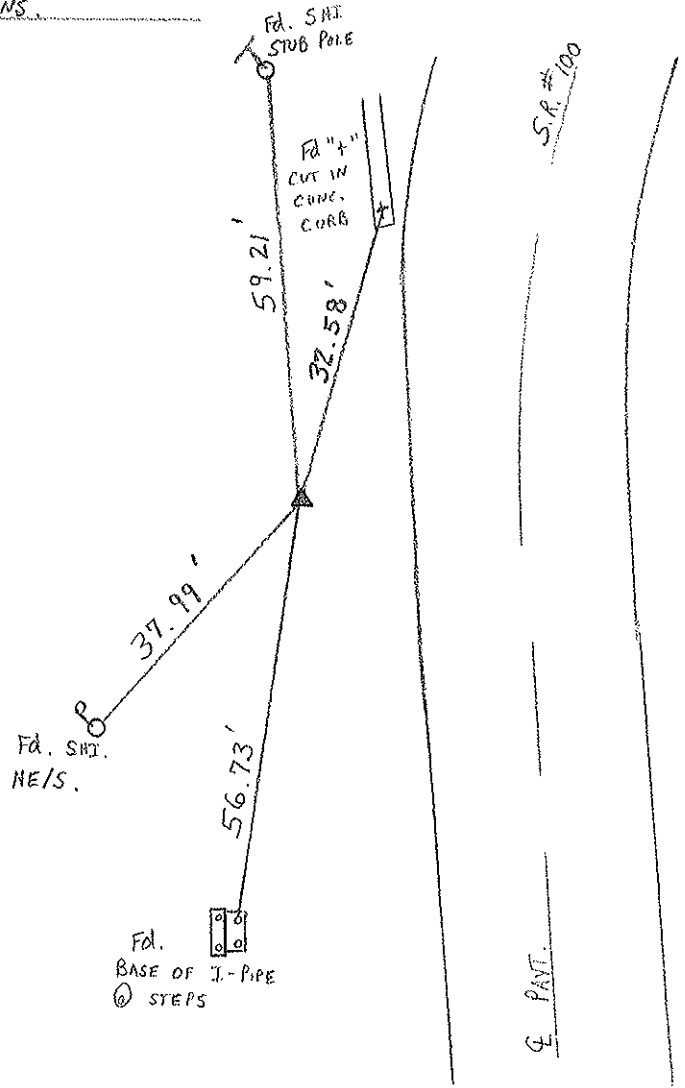
14.8' LT TO OF HT. EDGE PAVEMENT

S.L.M. 106 + 21

POINT OFF ROAD  
UN-DISTURBED  
10-FT-00



RECORD: P.J. CONSTRUCTION  
106 + 45 SET FROM  
1951 PLANS.



O.D.O.T. DISTRICT 2 SURVEY OFFICE

PERSONNEL

REFERENCE NO. 7

SHEET 7 OF       

NOTES Cronin

H.C. Ripple

R.C. Barbour

DATE 11/07/86

WEATHER overcast

TEMP. 50°

ROUTE #100

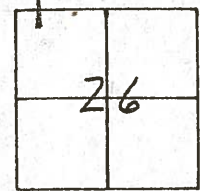
COUNTY Seneca

TOWNSHIP Eden

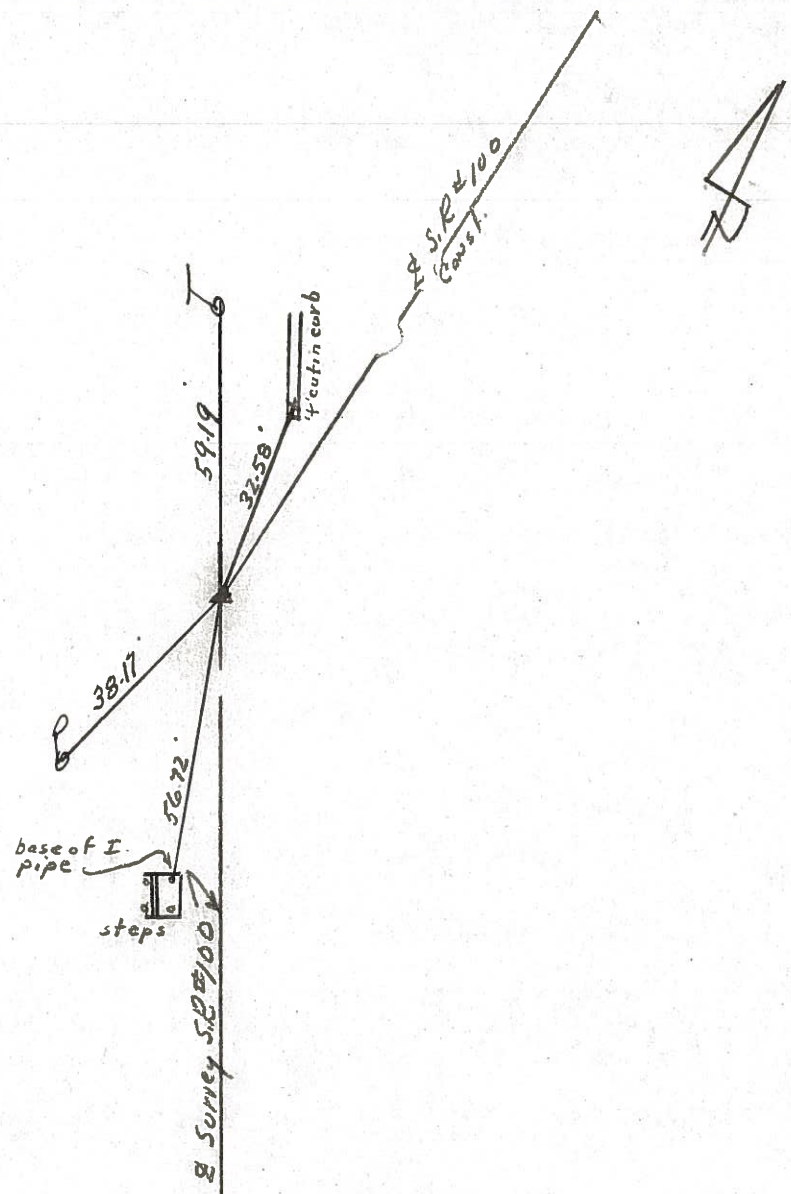
SECTION 26

T. 1 N. R. 15 E.

TYPE MONUMENT I. bolt & nut  
 ON SURFACE - BELOW 1" below  
 LEFT - ¢ PAV'T. - RIGHT 25' Lt. & Pav't.  
 TO        EDGE PAVEMENT  
 S.L.M. 2.0161-



P.I. Const.  
106+45  
Set from 1951 Plans



County SENECA S.R. 100

Township EDEN

Section 26

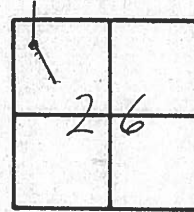
T/N, R/S

Personnel CRONIN  
RIPPLE  
GEYMAN  
MOSSER  
BARROUR

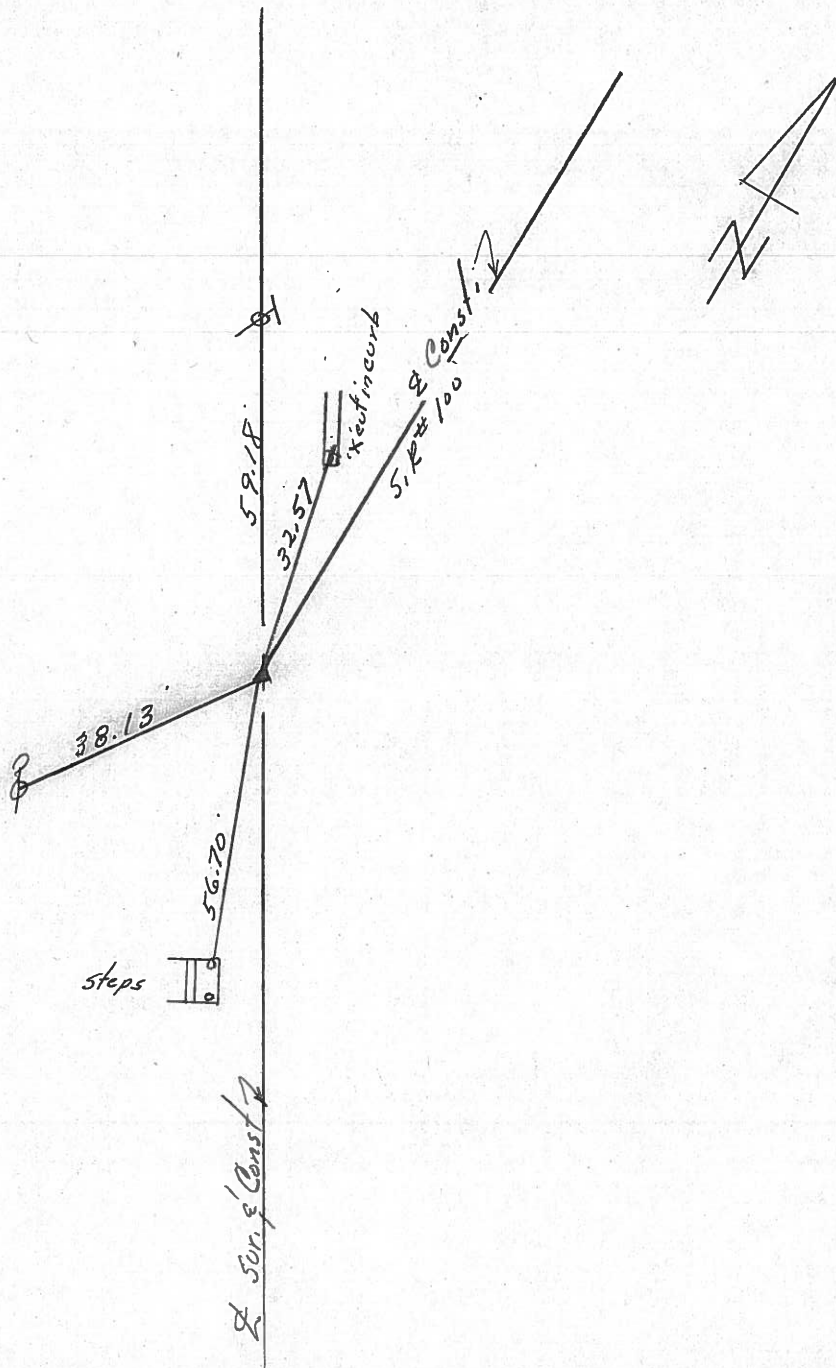
Date 8/5/81 DRAWN 8/10/81

Weather SUNNY

Temp. 72°



7



P.I. Const.  
106+45  
Fd. Iron bolt with nut-Set.  
from 1951 Plans  
11' ± Lt. of Lt. E.P.

50' ± Const

County Seneca S.R. 100

Township EDEN

Section 26

T/LN, R/SE

Personnel Hoffman

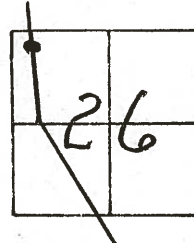
Householder

#7

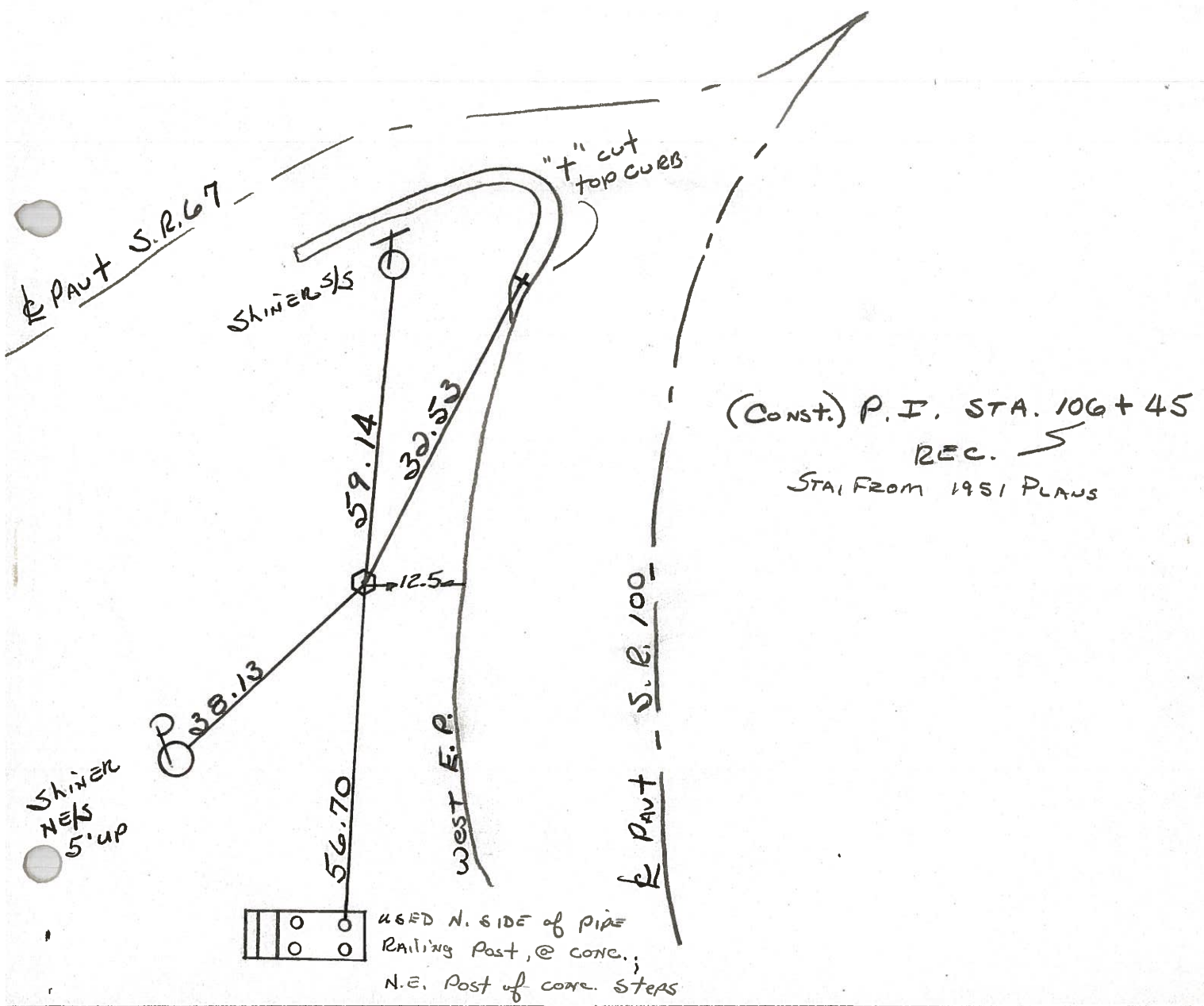
Date 6-11-81

Weather Cloudy

Temp. +85°

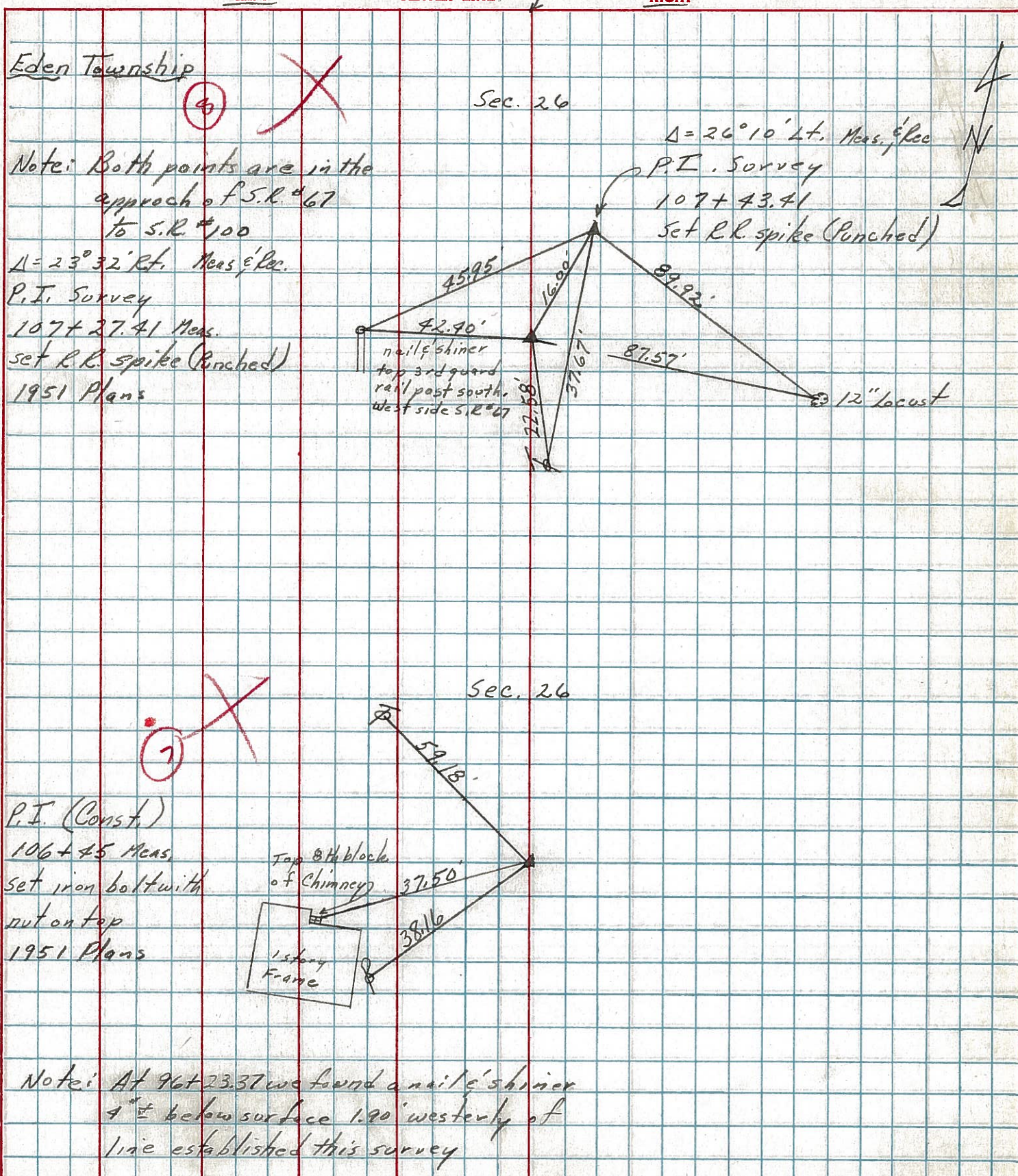


Fd. IRON Bolt with NUT, 2" Below SURFACE  
25.2' W. of & PAUT, SR 100



PERSONNEL	TITLE	PERSONNEL	TITLE	COUNTY	DATE
Cronin		Schneider		Seneca	8/3/77
Ripple		Barbour		S. R. #100	WEATHER sunny
Geyman				SEC. Crawford Co. Line - North	TEMP. 75°

DESCRIPTION Ties for Control Points JOB NO.



8-A