

O.D.O.T. DISTRICT 2 SURVEY OFFICE (USE ONLY)

PERSONNEL

REFERENCE NO. 8

SHEET 8 OF 46

NOTES RHOADES

DATE 6/17/22

ROUTE SR 100

H.C. AUBLE

WEATHER SUNNY

COUNTY SENECA

R.C. WHITAKER

TEMP. 84°

TOWNSHIP EDEN

NIESE

SECTION 26

DWG BY WHITAKER

PID 95778

T 1 N R 15 E

TYPE MONUMENT MAG/WASHER

ON SURFACE - ~~BELOW~~ ON

OFFSET  $\bar{C}$  PAVEMENT ON LT : RT

- TO - EDGE PAVEMENT

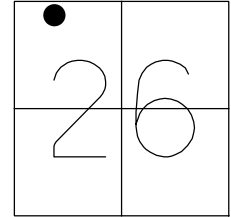
STATION: 107+43.26

HORZ.DATUM: NAD83(2011)

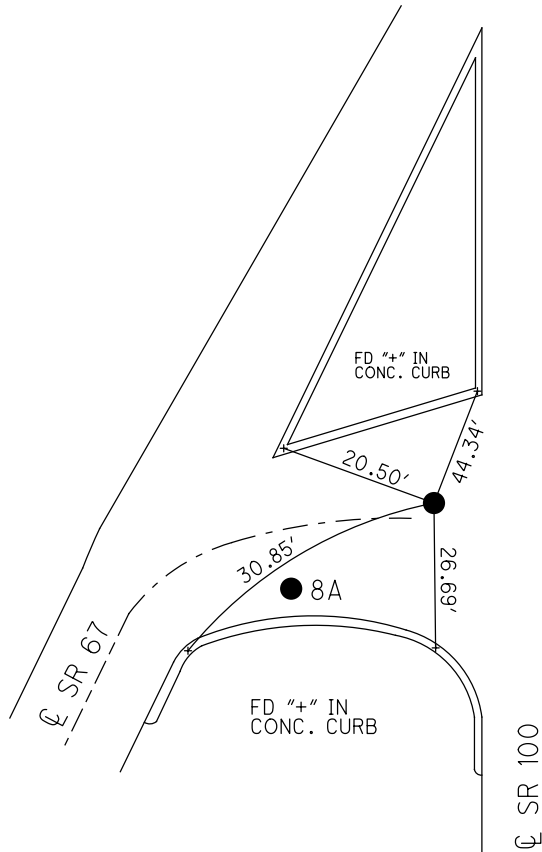
GEOID: 2012A

GRID: NORTHING: 493779.252

EASTING: 1800129.572



RECORD: P.I.  
 $\Delta = 26^\circ 10' \text{ LT}$   
 $\bar{C}$  SURVEY  
 STA: 107+43.41  
 FD P.K./WASHER  
 5/3/94, CL  
 SET P.K./WASHER  
 9/26/94, CL  
 FD P.K.SHANK  
 REF8  
 2/19/14, TMR  
 SET MAG/WASHER  
 NEWREF8  
 7/13/15, JFO  
 FD MAG/WASHER  
 REF8  
 2/4/16, JFO  
 SET MAG/WASHER  
 NEWREF8  
 6/17/22, DSA



DIST. 8-8A = 16.10'

O.D.O.T. DISTRICT 2 SURVEY OFFICE (USE ONLY)

PERSONNEL \_\_\_\_\_ REFERENCE NO. 8 SHEET 8 OF 12  
 NOTES RHOADES DATE 4/13/15 ROUTE SR 100  
 H.C. O'DONNELL WEATHER CLOUDY COUNTY SENECA  
 R.C. LEU TEMP. 59° TOWNSHIP EDEN  
 DWG BY MILLER PID 93677 SECTION 26  
 T 1 N R 15 E

TYPE MONUMENT P.K.SHANK

ON SURFACE - ~~BELOW~~ ON

OFFSET  $\varnothing$  PAVEMENT ON LT : RT

- TO - EDGE PAVEMENT

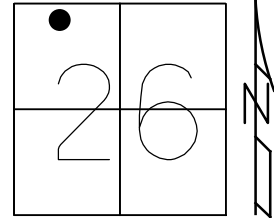
STATION: 107+43.25

HORZ.DATUM: NAD83(2011)

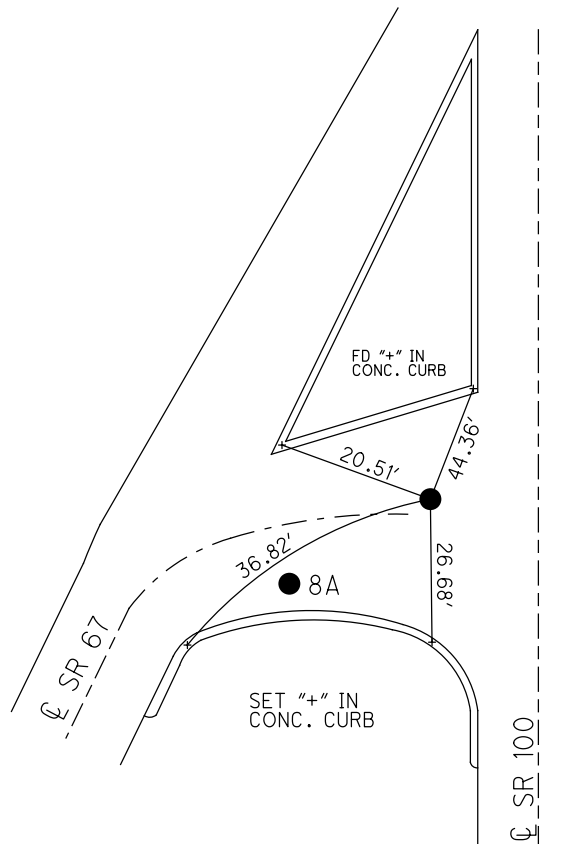
GEOID: GEOID 12A

GRID: NORTHING: 493779.252

EASTING: 1800129.572



RECORD: P.I.  
 $\Delta = 26^\circ 10' \text{ LT}$   
 $\varnothing$  SURVEY  
 STA: 107+43.41  
 FD P.K./WASHER  
 5/3/94, CL  
 SET P.K./WASHER  
 9/26/94, CL  
 FD P.K.SHANK  
 REF8  
 2/19/14, TMR  
 SET MAG/WASHER  
 NEWREF8  
 7/13/15, JFO  
 FD MAG/WASHER  
 REF8  
 2/4/16, JFO



8 TO 8A = 16'

# O.D.O.T. DISTRICT 2 SURVEY OFFICE

PERSONNEL

REFERENCE NO. 8

SHEET 8 OF 31

NOTES CANTERBURY

H.C. BARNHISEL

R.C. MOSER

DATE 7-21-00

WEATHER FAIR

TEMP. +72°

ROUTE S.R. #67

COUNTY SENECA

TOWNSHIP EDEN

SECTION 26

T 1 N R 15 E

TYPE MONUMENT A = P.K. + WASHER @ SURFACE  
B = SM. R.R. SPR. @ SURFACE

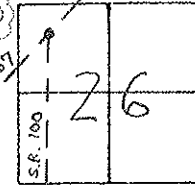
ON SURFACE - BELOW SURFACE

LEFT - ☉ PAV'T. - RIGHT

B = 8' TO RT. EDGE PAVEMENT

S.L.M. 122 + 47 S.R. # 100

POINTS NOT COVERED  
DURING THIS  
RESURFACING  
10-17-00



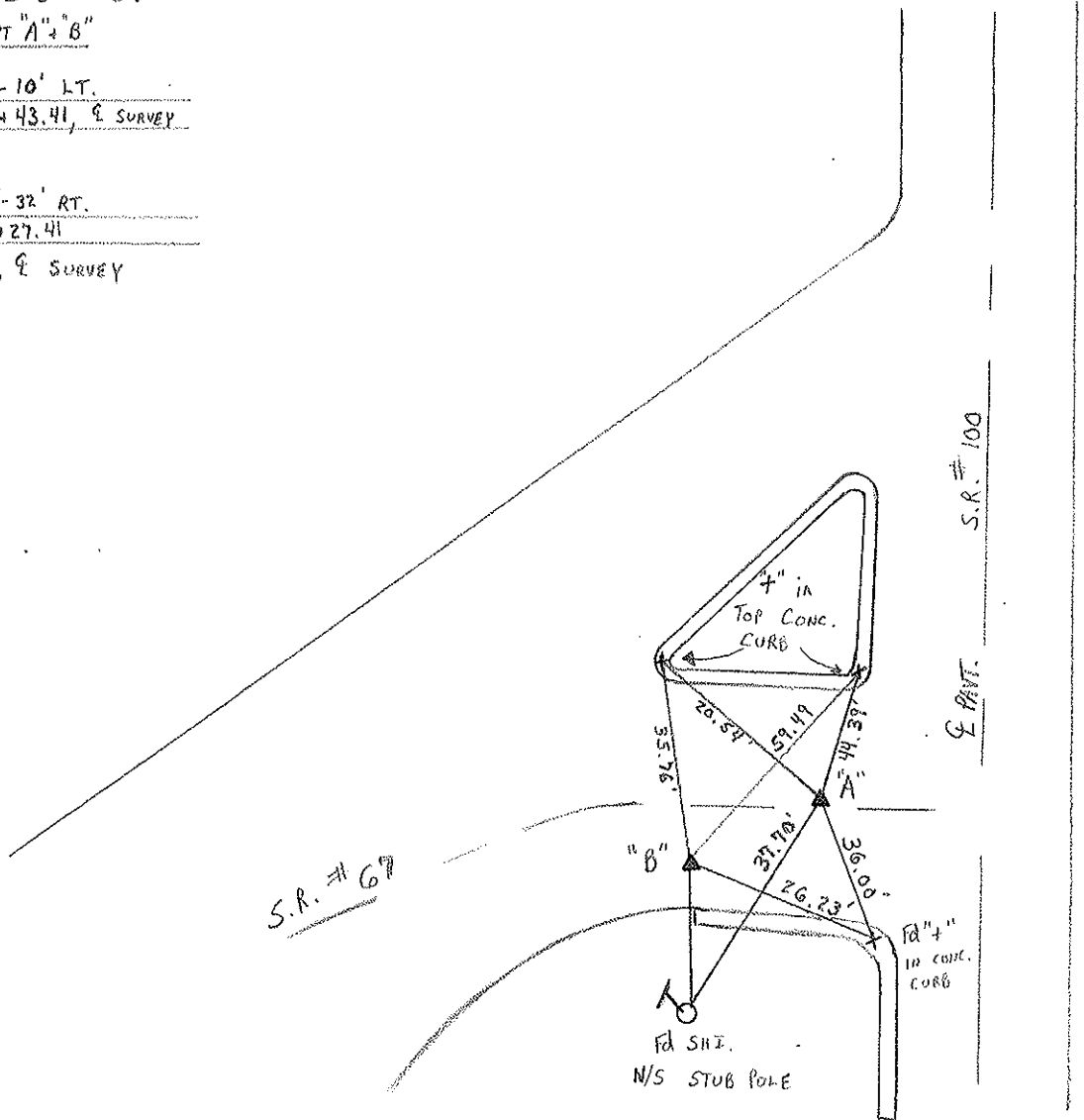
A = 23' RT E/P - S.R. #67

B = 8' RT E/P - S.R. #67

16.00' BETWEEN PT "A" + "B"

RECORD: "A"  $\Delta = 26^\circ - 10'$  LT.  
P.I. STA 107+43.41, & SURVEY

RECORD: "B"  $\Delta = 23^\circ - 32'$  RT.  
P.I. STA 107+27.41  
1951 PLANS, & SURVEY





County Seneca S.R. 100 #67

Date 6-11-81

Township FDEN

Weather cloudy

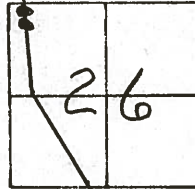
Section 26

Temp. +85°

T N, R E

Personnel Hoffman

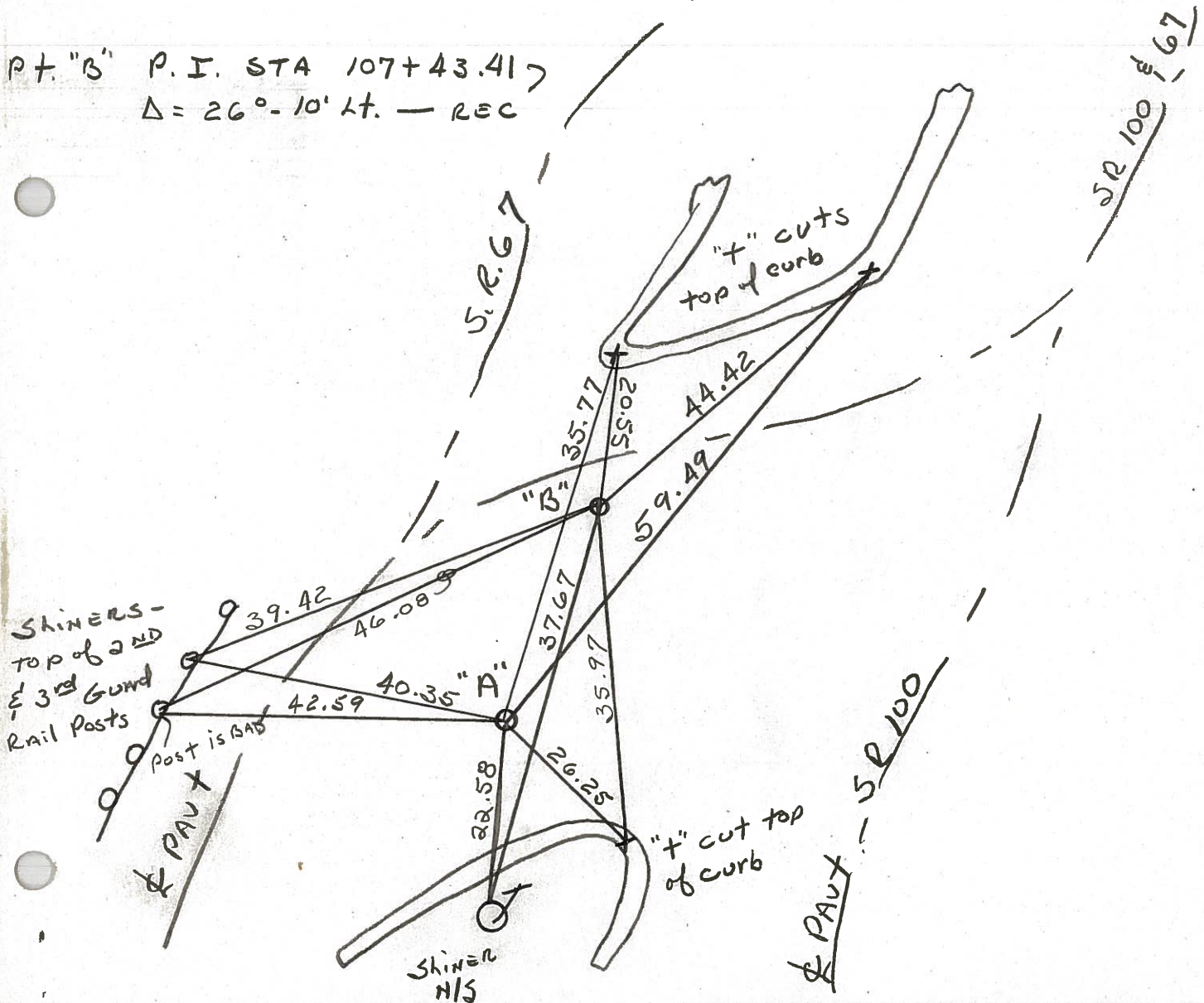
#8 Householder



Pts. "A" & "B" Fd. R.R. SPK @ SURFACE

Pt. "A" P.I. STA. 107+27.41  
 $\Delta = 23^\circ - 32'$  RT. - REC.

Pt. "B" P.I. STA. 107+43.41  
 $\Delta = 26^\circ - 10'$  Lt. - REC



PERSONNEL TITLE PERSONNEL TITLE

Cronin Schneider  
Lippie Barbour  
Geyman

COUNTY Seneca

DATE 8/3/77

S. R. #100

WEATHER sunny

SEC. Crawford Co. Line - North TEMP 75°

DESCRIPTION Ties for Control Points

JOB NO.

LEFT

CENTER LINE

RIGHT

Eden Township

6

Sec. 26

Note: Both points are in the approach of S.R. #67 to S.R. #100

$\Delta = 23^{\circ}32'$  Rt. Meas. & Rec.

P.I. Survey

107+27.41 Meas.

set R.R. spike (Punched)

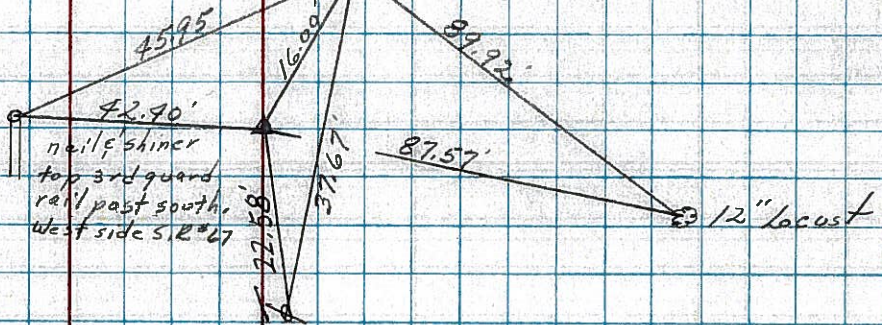
1951 Plans

$\Delta = 26^{\circ}10'$  Lt. Meas. & Rec.

P.I. Survey

107+43.41

Set R.R. spike (Punched)



8-A

Sec. 26

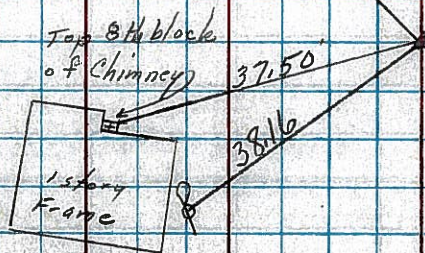
7

P.I. (Const.)

106+45 Meas.

set iron bolt with nut on top

1951 Plans



Note: At 96+23.37 we found a nail shiner 4" ± below surface 1.90' westerly of line established this survey