

O.D.O.T. DISTRICT 2 SURVEY OFFICE (USE ONLY)

PERSONNEL

REFERENCE NO. 8A

SHEET 9 OF 46

NOTES RHOADES

DATE 6/17/22

ROUTE SR 100

H.C. AUBLE

WEATHER SUNNY

COUNTY SENECA

R.C. WHITAKER

TEMP. 84°

TOWNSHIP EDEN

NIESE

DWG BY WHITAKER

PID 95778

SECTION 26

T 1 N R 15 E

TYPE MONUMENT MAG/WASHER

ON SURFACE - ~~BELOW~~ ON

OFFSET ϕ PAVEMENT ON LT : RT

8' TO RT EDGE PAVEMENT

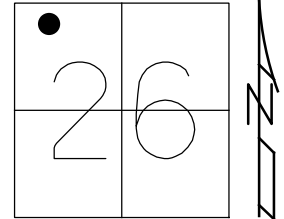
STATION: 107+27.22

HORZ.DATUM: NAD83(2011)

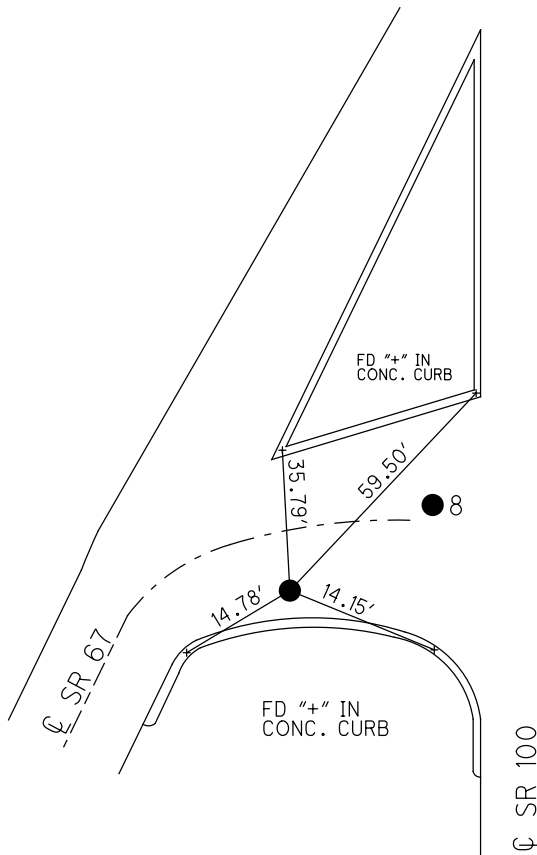
GEOID: 2012A

GRID: NORTHING: 493763.530

EASTING: 1800126.305



RECORD: P.I.
 $\Delta = 23^\circ 32' RT$
 1951 PLANS, ϕ SURVEY
 STA: 107+27.41
 FD R.R.SPIKE
 5/3/94, CL
 SET R.R.SPIKE
 9/26/94, CL
 FD R.R.SPIKE
 REFA8
 2/19/14, TMR
 SET MAG/WASHER
 NEWREFA8
 7/13/15, JFO
 FD MAG/WASHER
 REFA8
 2/4/16, JFO
 SET MAG/WASHER
 NEWREFA8
 6/17/22, DSA



DIST. 8-8A = 16.10'

O.D.O.T. DISTRICT 2 SURVEY OFFICE (USE ONLY)

PERSONNEL

REFERENCE NO. 8A

SHEET 9 OF 12

NOTES RHOADES
 H.C. O'DONNELL
 R.C. LEU

DATE 4/13/15
 WEATHER CLOUDY
 TEMP. 59°

ROUTE SR 100
 COUNTY SENECA
 TOWNSHIP EDEN
 SECTION 26

DWG BY MILLER PID 93677

T 1 N R 15 E

TYPE MONUMENT R.R.SPIKE

ON SURFACE - ~~BELOW~~ ON

OFFSET Q PAVEMENT ON LT : RT

8' TO RT EDGE PAVEMENT

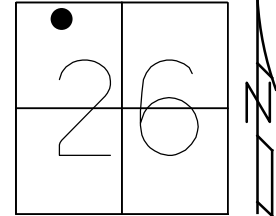
STATION: 107+27.22

HORZ.DATUM: NAD83(2011)

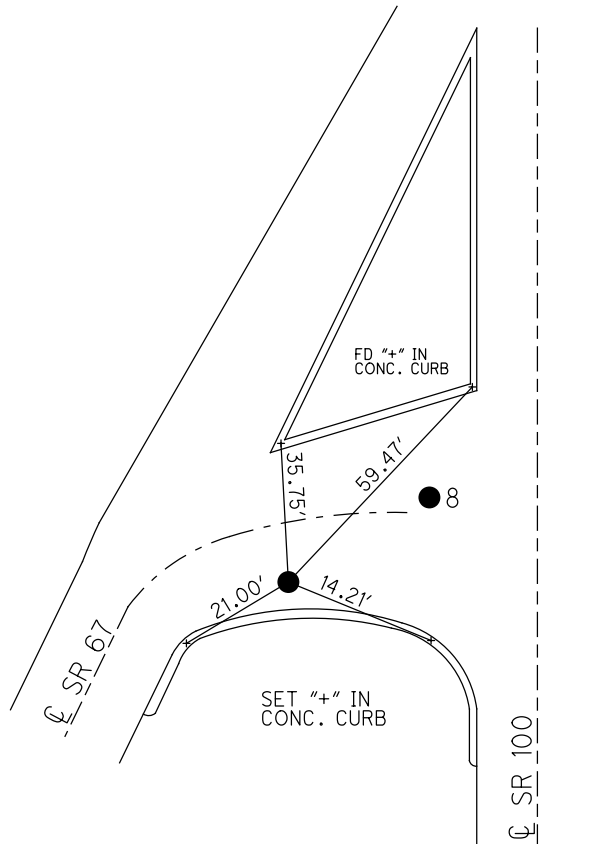
GEOID: GEOID 12A

GRID: NORTHING: 493763.530

EASTING: 1800126.305



RECORD: P.I.
 $\Delta = 23^\circ 32' RT$
 1951 PLANS, Q SURVEY
 STA: 107+27.41
 FD R.R.SPIKE
 5/3/94, CL
 SET R.R.SPIKE
 9/26/94, CL
 FD R.R.SPIKE
 REFA8
 2/19/14, TMR
 SET MAG/WASHER
 NEWREFA8
 7/13/15, JFO
 FD MAG/WASHER
 REFA8
 2/4/16, JFO



8 TO 8A = 16'

O.D.O.T. DISTRICT 2 SURVEY OFFICE

PERSONNEL

REFERENCE NO. 8

SHEET 8 OF 31

NOTES CANTERBURY

H.C. BARNHISEL

R.C. MOSER

DATE 7-21-00

WEATHER FAIR

TEMP. +72°

ROUTE S.R. #67

COUNTY SENECA

TOWNSHIP EDEN

SECTION 26

T 1 N R 15 E

TYPE MONUMENT A = P.K. + WASHER @ SURFACE
B = SM. R.R. SPR. @ SURFACE

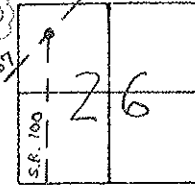
ON SURFACE - BELOW SURFACE

LEFT - ☉ PAV'T. - RIGHT

B = 8' TO RT. EDGE PAVEMENT

S.L.M. 122 + 47 S.R. # 100

POINTS NOT COVERED
DURING THIS
RESURFACING
10-17-00



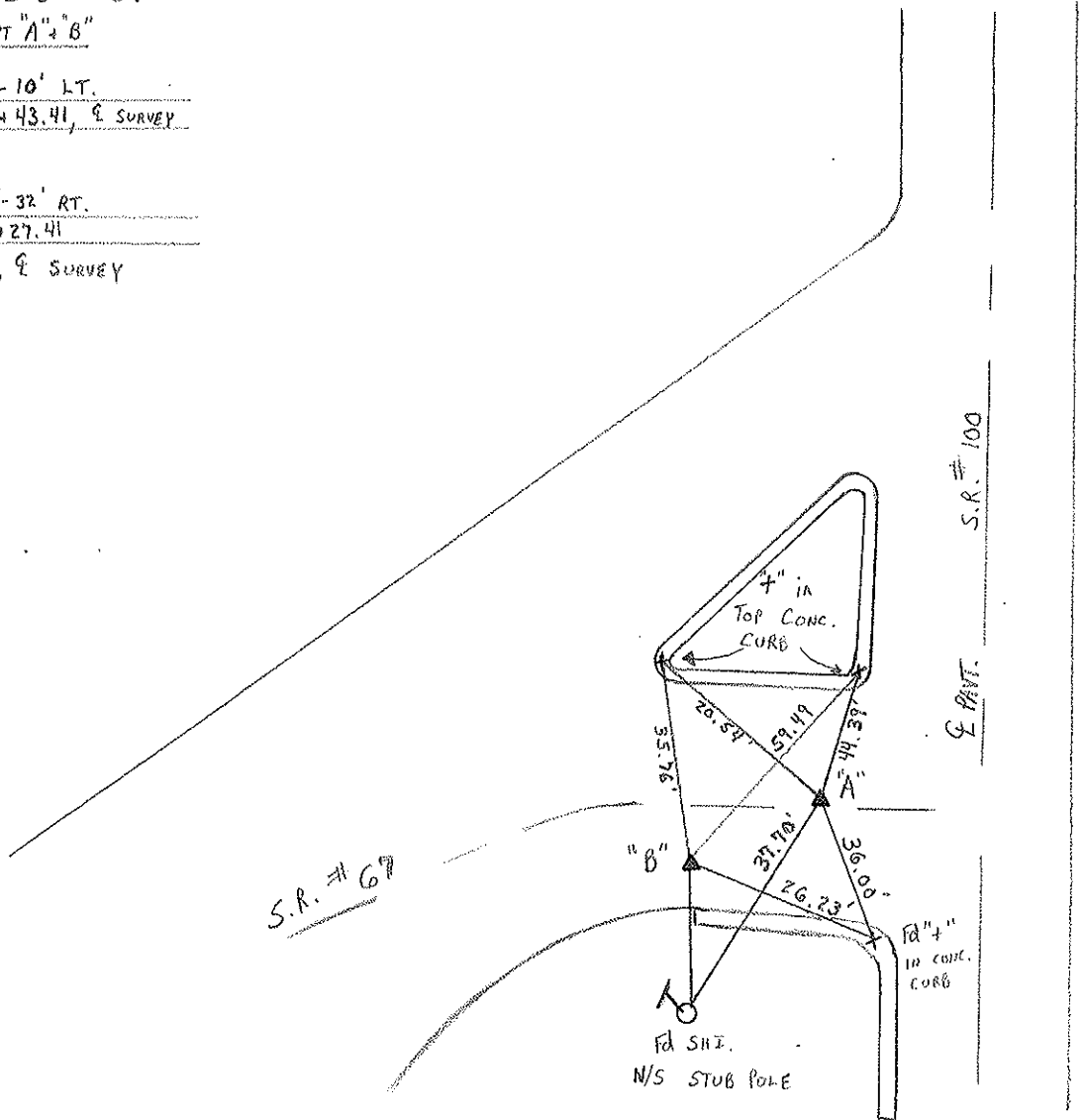
A = 23' RT E/P - S.R. #67

B = 8' RT E/P - S.R. #67

16.00' BETWEEN PT "A" + "B"

RECORD: "A" $\Delta = 26^\circ - 10'$ LT.
P.I. STA 107 + 43.41, & SURVEY

RECORD: "B" $\Delta = 23^\circ - 32'$ RT.
P.I. STA 107 + 27.41
1951 PLANS, & SURVEY



O.D.O.T. DISTRICT 2 SURVEY OFFICE

PERSONNEL _____

REFERENCE NO. 8 E' 8 A'

SHEET 8 OF _____

NOTES Cronin

DRAW 11/10/86

H.C. Ripple

DATE 11/07/86

R.C. Barbour

WEATHER overcast

TEMP. 50°

ROUTE #100

COUNTY Seneca

TOWNSHIP Eden

SECTION 26

T. 1 N. R 15 E

TYPE MONUMENT P.K.s & washers

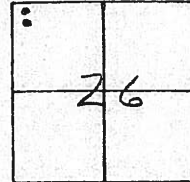
ON SURFACE - BELOW on surface

LEFT - & PAV'T. - RIGHT Approach of S.R. #67

TO _____ EDGE PAVEMENT

S.L.M. _____

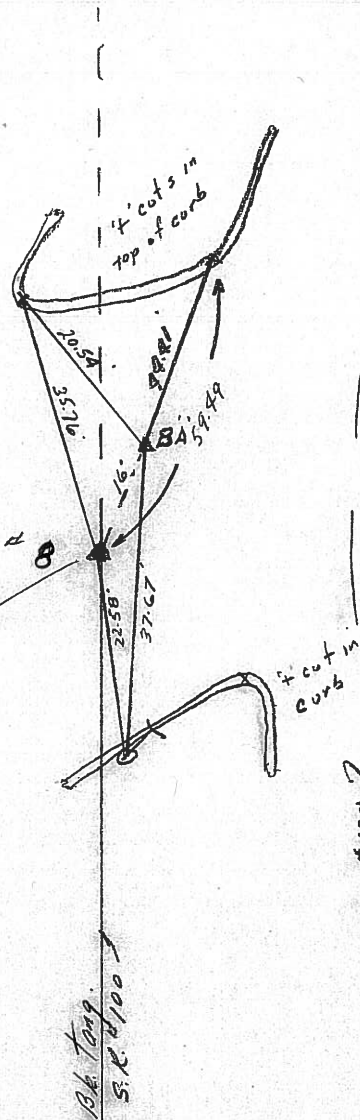
8-A



P.I. Survey # 8 A'
 $\Delta = 26^{\circ} 10' 00''$ Lt. Rec. & Meas.
107 + 43.41
P.K. & washer atop R.R. spike
S.R. #67 ??

P.I. Survey # 8
 $\Delta = 73^{\circ} 32' 00''$ Rt. Rec. & Meas.
107 + 27.41 Meas
P.K. & washer atop R.R. spike
1951 Plans

S.R. #67



S.R. #100

County Seneca S.R. 100 F 67

Township Eden

Section 26

T N, R E

Personnel Hoffman

Householder

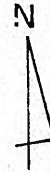
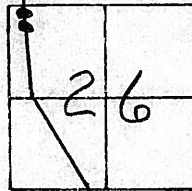
~~#8~~

8-A

Date 6-11-81

Weather Cloudy

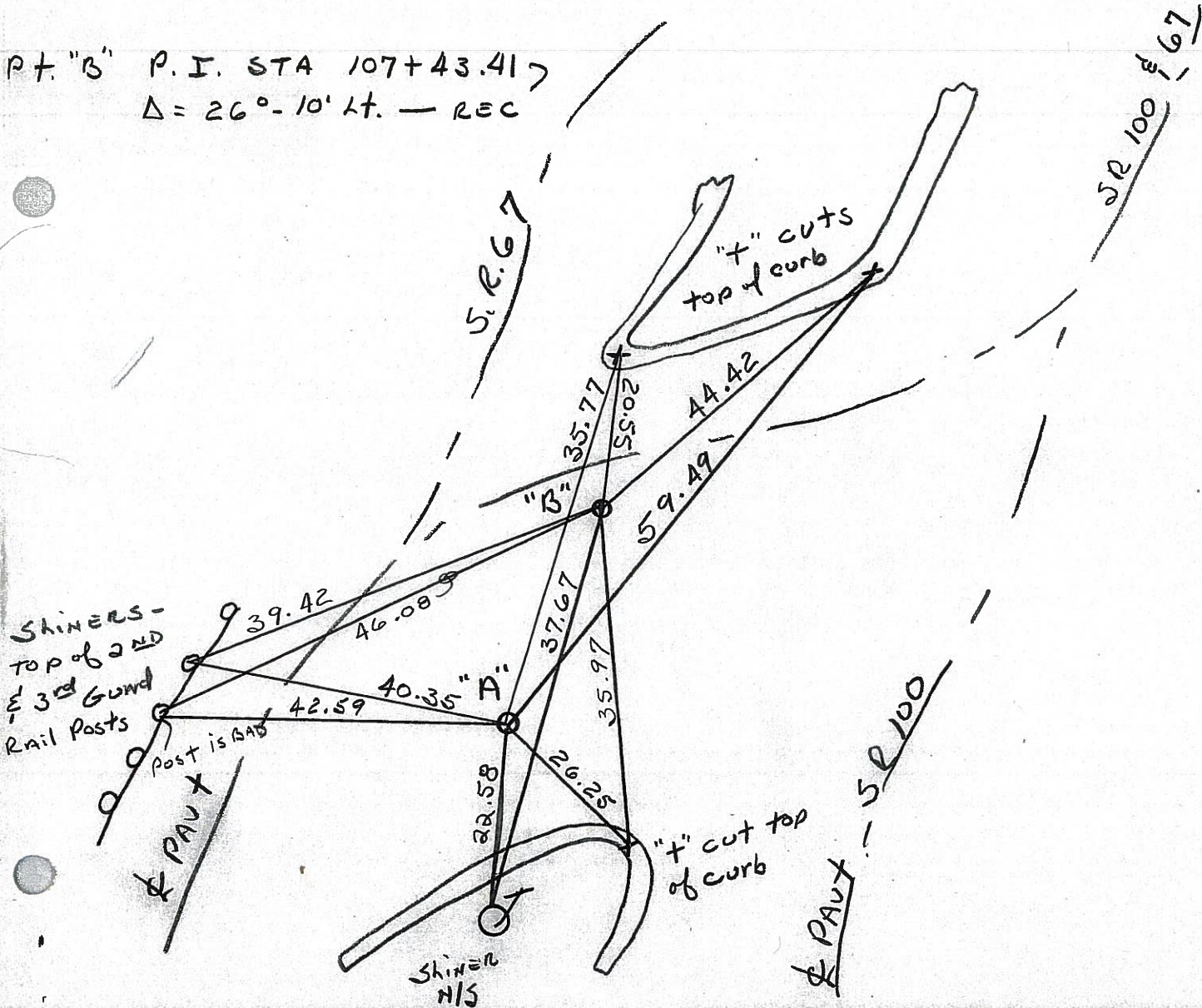
Temp. +85°



Pts. "A" & "B" Fd. R.R. spk @ surface

Pt. "A" P.I. STA. 107+27.41
 $\Delta = 23^\circ - 32'$ RT. - REC.

Pt. "B" P.I. STA 107+43.41
 $\Delta = 26^\circ - 10'$ Lt. - REC



PERSONNEL TITLE PERSONNEL TITLE

Cronin Schneider
 Ruppel Barbour
 Geyman

COUNTY Seneca

DATE 8/3/77

S. R. #100

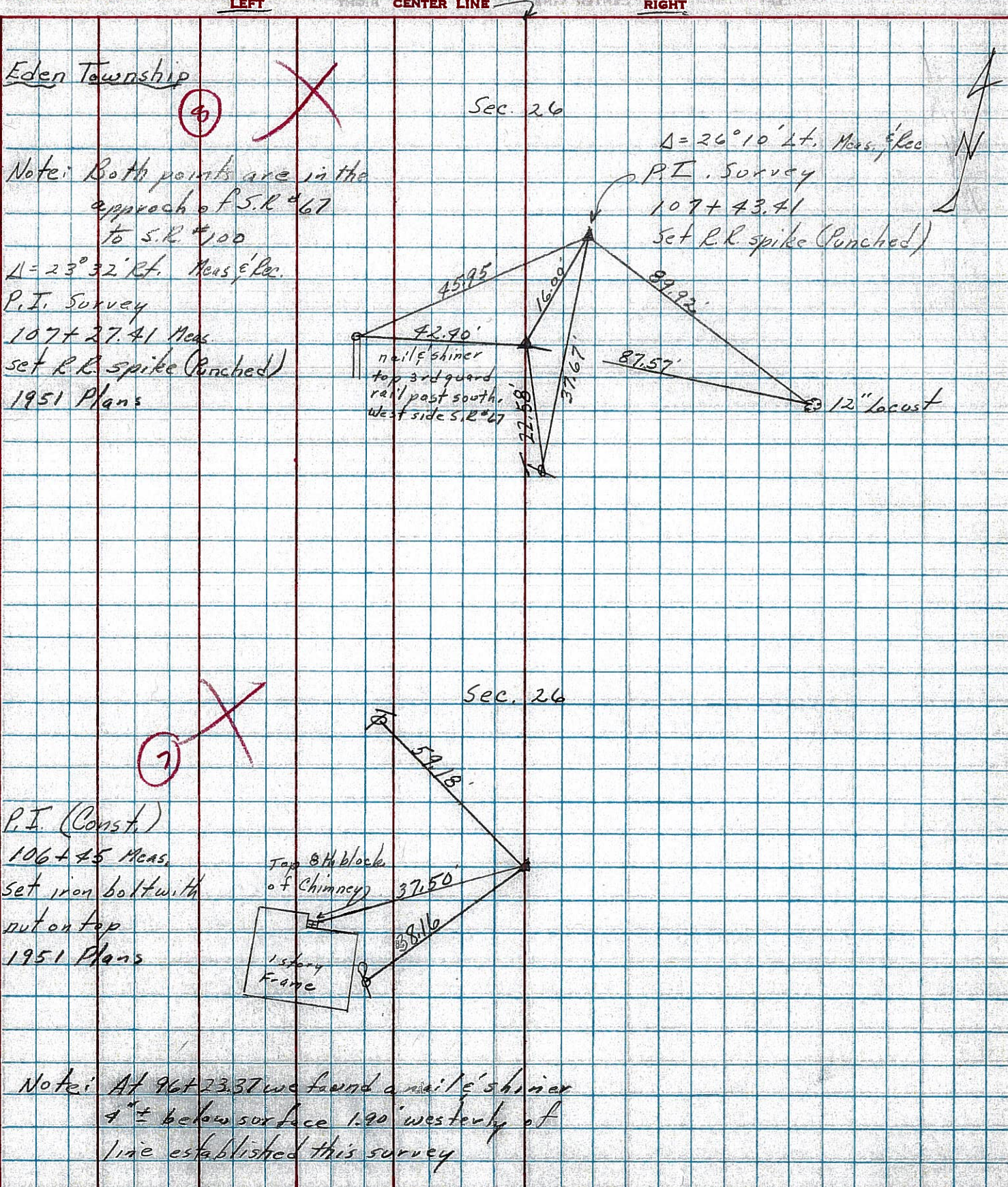
WEATHER sunny

SEC. Crawford Co. Line - North

TEMP 75°

DESCRIPTION Ties for Control Points

JOB NO.



8-A