

O.D.O.T. DISTRICT 2 SURVEY OFFICE (USE ONLY)

PERSONNEL

REFERENCE NO. 9

SHEET 10 OF 12

NOTES RHOADES

DATE 7/12/17

ROUTE SR 100

H.C. O'DONNELL

WEATHER CLOUDY

COUNTY SENECA

R.C. RHOADES

TEMP. 78°

TOWNSHIP EDEN

SECTION 23

DWG BY MILLER

PID 93677

T 1 N R 15 E

TYPE MONUMENT MAG/WASHER

ON SURFACE - ~~BELOW~~ ON

OFFSET 0.5' LT : ~~RT~~

- TO - EDGE PAVEMENT

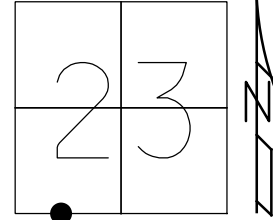
STATION: 115+62.17

HORZ. DATUM: NAD83(2011)

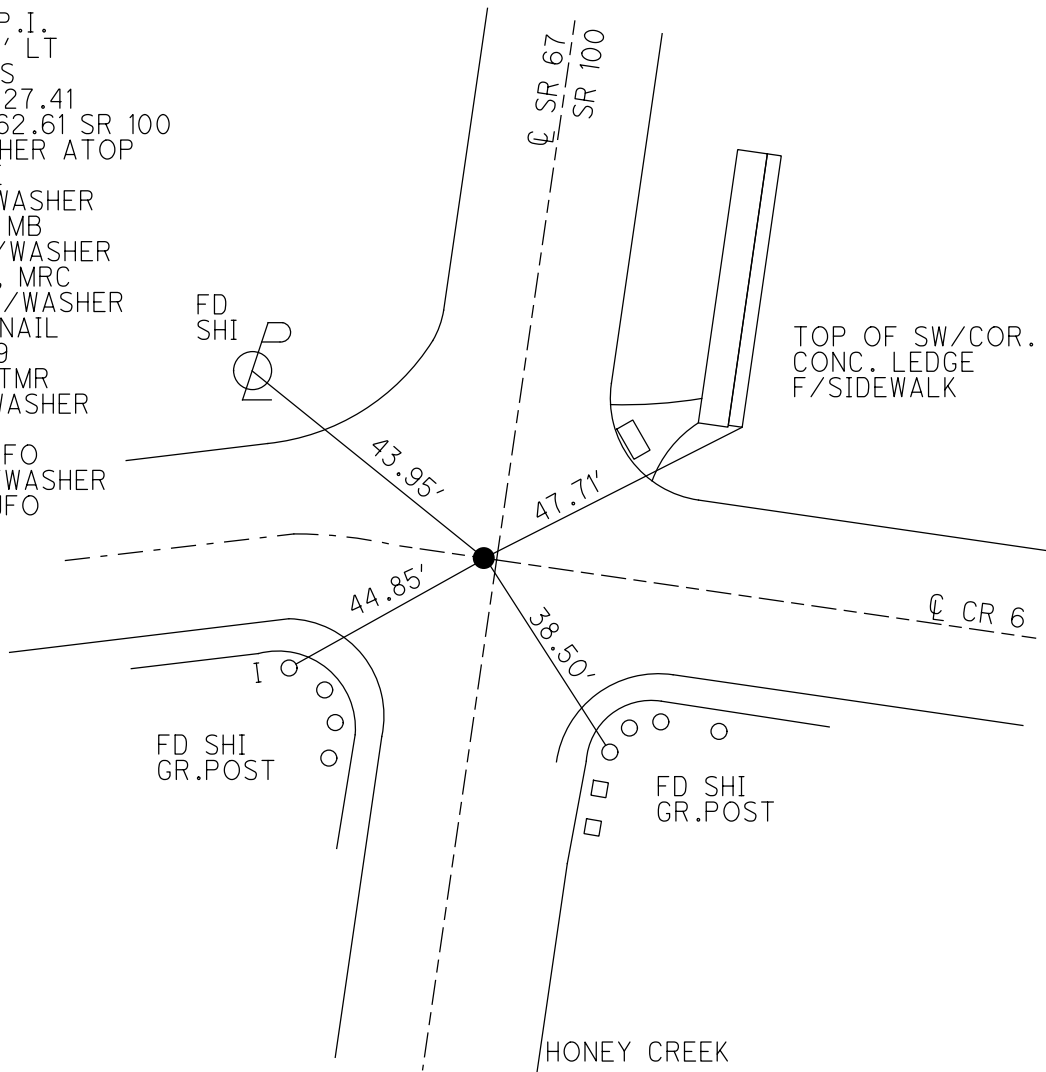
GEOID: GEOID 12A

GRID: NORTHING: 494582.078

EASTING: 1800291.189



RECORD: P.I.
 $\Delta = 01^\circ 57' \text{ LT}$
 1951 PLANS
 STA: 107+27.41
 STA: 115+62.61 SR 100
 P.K./WASHER ATOP
 R.R.SPIKE
 FD P.K./WASHER
 7/21/00, MB
 SET P.K./WASHER
 10/17/00, MRC
 DNF, P.K./WASHER
 SET MAG NAIL
 GPS, REF9
 2/21/14, TMR
 FD MAG/WASHER
 REF9
 2/4/16, JFO
 SET MAG/WASHER
 11/9/17, JFO



O.D.O.T. DISTRICT 2 SURVEY OFFICE

PERSONNEL _____

REFERENCE NO. 9

SHEET 9 OF 31

NOTES CANTERBURY

H.C. BARNHISEL

R.C. MOSEK

DATE 7-21-00

WEATHER FAIR

TEMP. +72°

ROUTE #67 & #100

COUNTY SENECA

TOWNSHIP EDEN

SECTION 23

T. 1 N. R 15 E

TYPE MONUMENT P.R. + WASHER

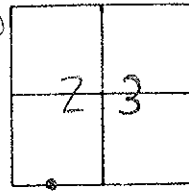
ON SURFACE - BELOW SURFACE

LEFT- & PAV'T. - RIGHT 0.5' LT. & PAVT.

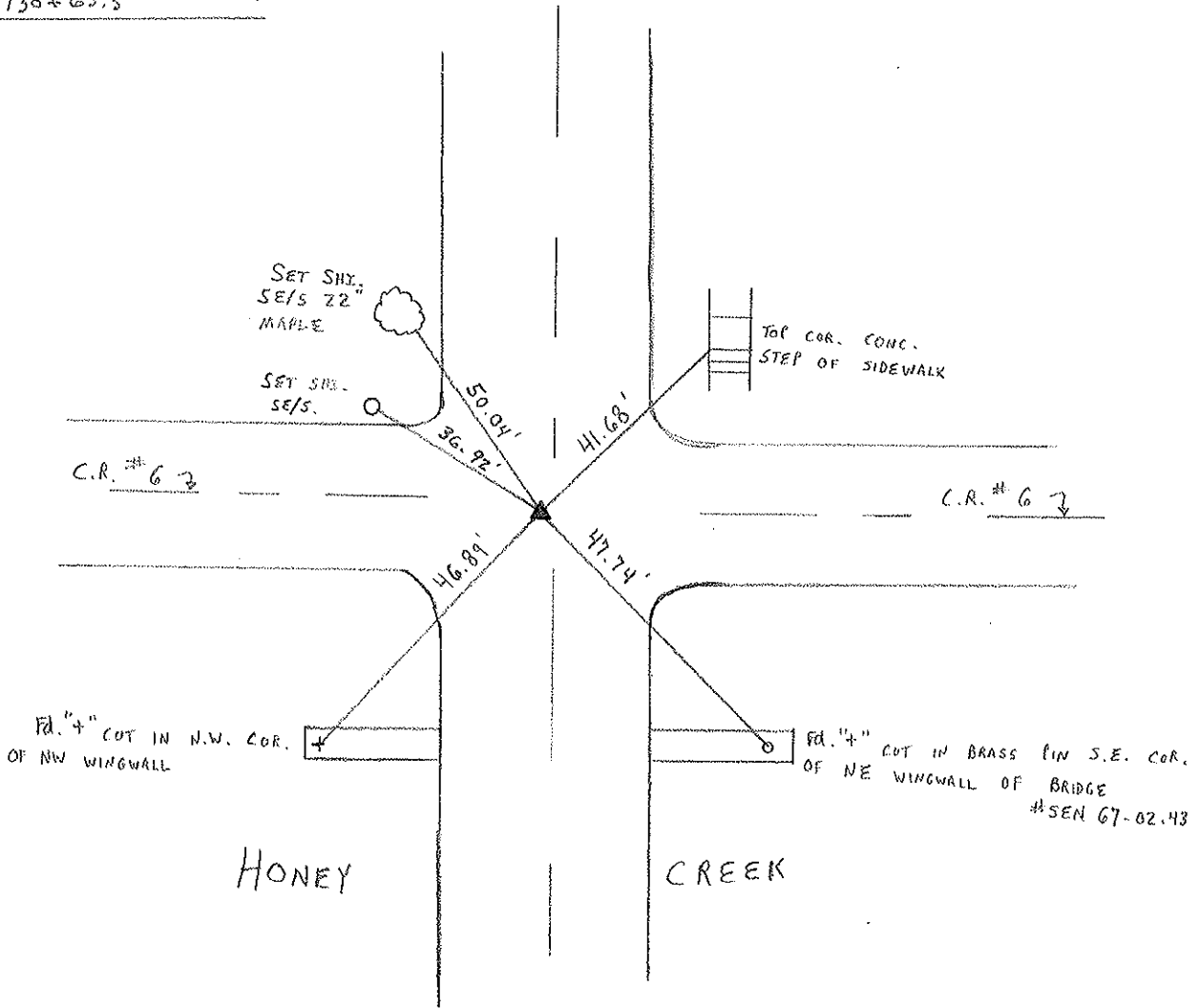
TO EDGE PAVEMENT ± 5'S. & PAVT. WEST

S.L.M. 131 + 13

RESET P.R. + WASHER
 10-17-00
 M.R.C.



RECORD: P.I. Δ = 01° 57' 00" LT.
 115 + 62.61 MEAS. (S.R. #100)
 P.R. + WASHER ATOP R.R. SPK.
 1951 PLANS
 SR 67 = 130 + 63.3



O.D.O.T. DISTRICT 2 SURVEY OFFICE

PERSONNEL

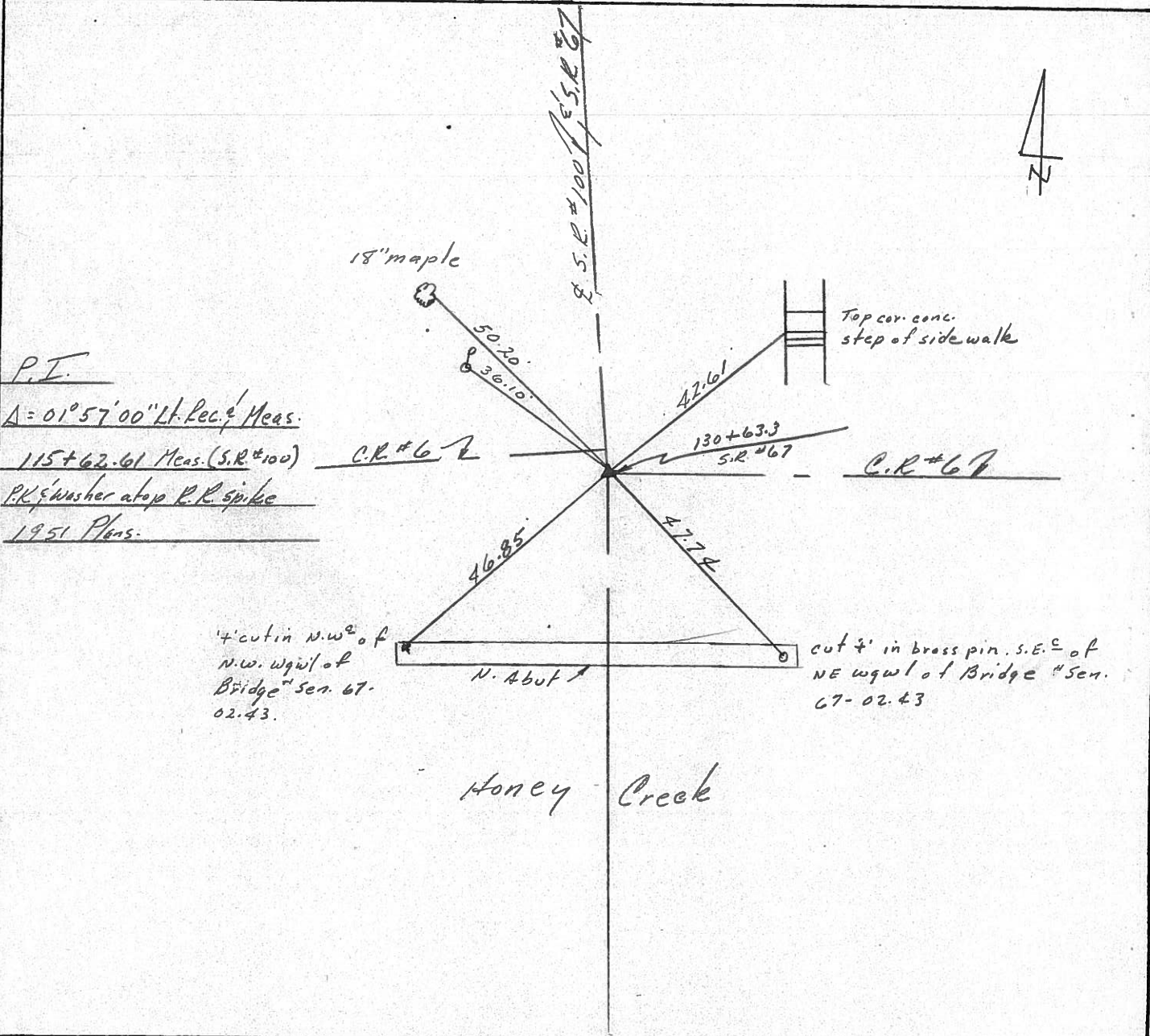
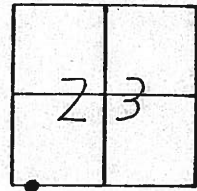
NOTES Cronin
 H.C. Ripple
 R.C. Geymen
Barbour

REFERENCE NO. 9
 DRAWN 11/12/86
 DATE 11/10/86
 WEATHER sunny
 TEMP. 46°

SHEET 9 OF

ROUTE #100 & 67
 COUNTY Seneca
 TOWNSHIP Eden
 SECTION 23
 T 1 N R 15 E

TYPE MONUMENT P.R. Washer
 ON SURFACE - BELOW on surface
 LEFT - PAV'T. - RIGHT & Pavt.
 TO EDGE PAVEMENT
 S.L.M.



P.I.
 $\Delta = 01^{\circ}57'00''$ Lt. Rec. & Meas.
 115+62.61 Meas. (S.R. #100)
 P.R. Washer atop R.R. spike
 1951 Plans

County Seneca S.R. 100 § 67

Date 6-16-81

Township EDEN

Weather OVERCAST

Section 23

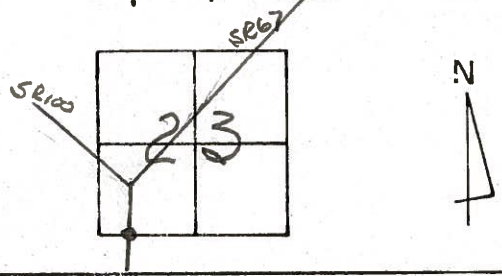
Temp. +75°

T N, R E

Personnel Hoffman

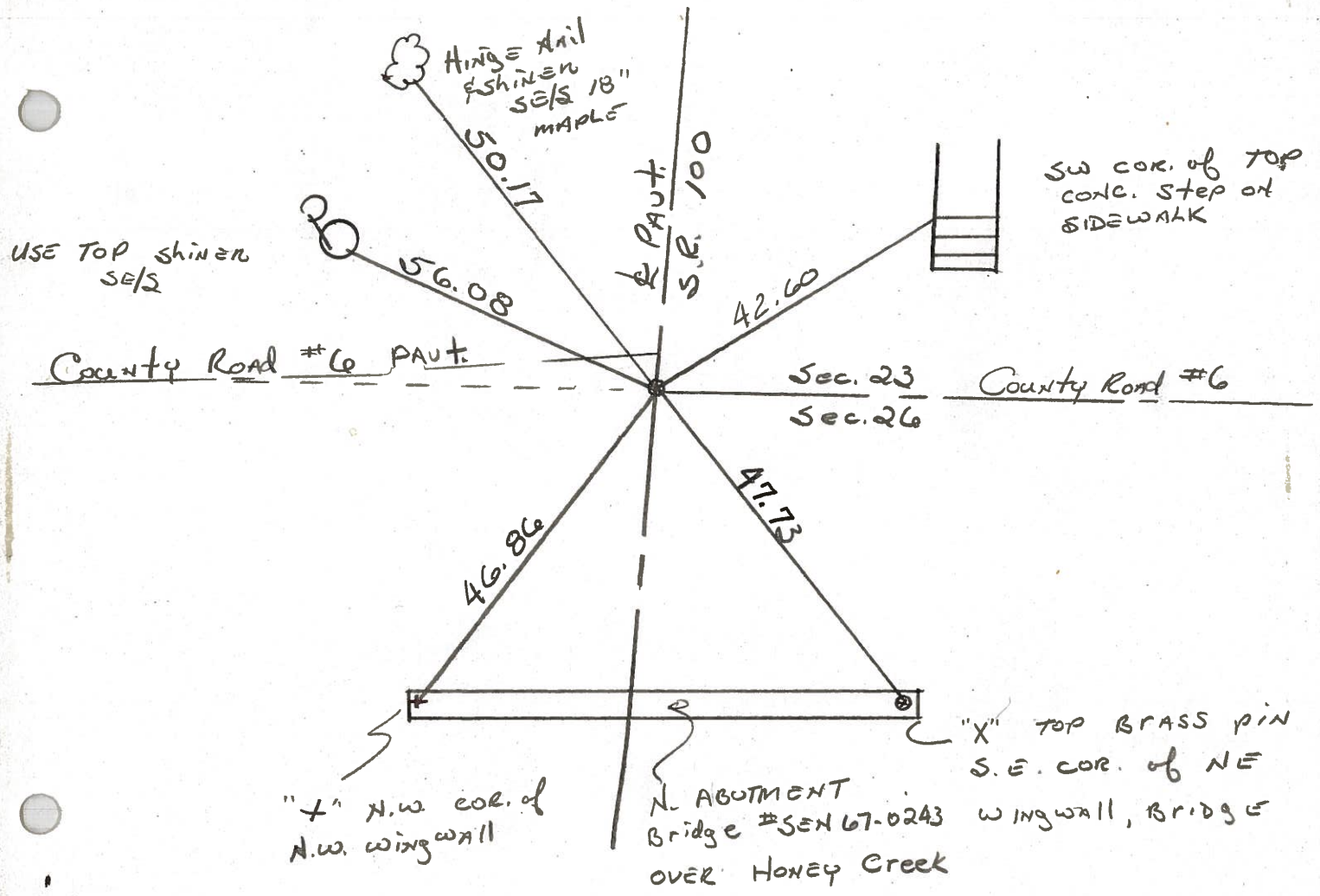
Householder

#9



Fd. R.R. SPK, 1" Below Surface @ ctr. of PAUT, S.R. 100 § 67

STA. 115+62.61 ~ REC.
P.I. Δ = 10.57' ht.



PERSONNEL: CROWIN TITLE: SCHNEIDER COUNTY: SENECA DATE: 8/3/77
 PERSONNEL: RIPPLE TITLE: MOSSER S. R. # 100 WEATHER: sunny
 PERSONNEL: BARBOUR SEC: Crawford Co. Line - North TEMP: 75°

DESCRIPTION: Ties for Control Points JOB NO. _____

