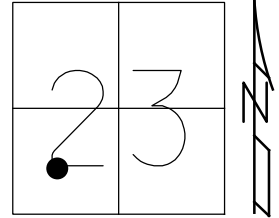


O.D.O.T. DISTRICT 2 SURVEY OFFICE (USE ONLY)

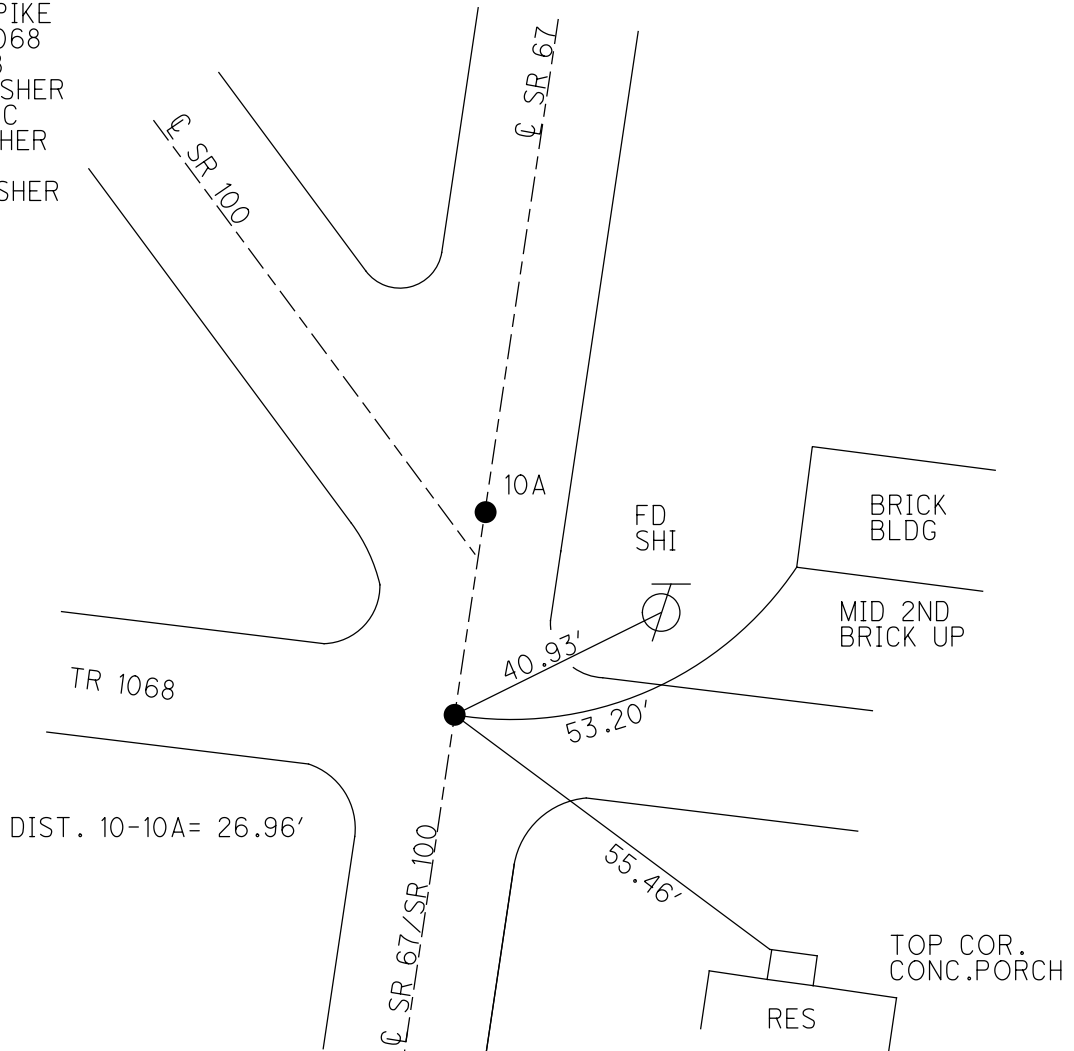
PERSONNEL _____ REFERENCE NO. 10 SHEET 11 OF 12
 NOTES RHOADES DATE 5/31/18 ROUTE SR 100
 H.C. O'DONNELL WEATHER SUNNY COUNTY SENECA
 R.C. RHOADES TEMP. 80° TOWNSHIP EDEN
 DWG BY MILLER PID 93677 SECTION 23
 T 1 N R 15 E

TYPE MONUMENT MAG/WASHER
 ON SURFACE - ~~BELOW~~ ON
 OFFSET \odot PAVEMENT ON LT : RT
- TO - EDGE PAVEMENT
 STATION: 119+54.82



HORZ. DATUM: NAD83(2011) GEOID: GEOID 12A
 GRID: NORTHING: 494969.434 EASTING: 1800355.655

RECORD:
 FD LG R.R SPIKE
 4.0' S. TR 1068
 7/25/00, MB
 SET P.K./WASHER
 10-17-00, MRC
 FD P.K./WASHER
 2-21-14, TMR
 SET MAG/WASHER
 NEWREF10
 5-31-18, JFO



O.D.O.T. DISTRICT 2 SURVEY OFFICE

PERSONNEL _____

REFERENCE NO. 10

SHEET 10 OF 31

NOTES CANTERBURY

H.C. BARNHISEL

R.C. MOSER

DATE 7-25-00

WEATHER SUN

TEMP. +82°

ROUTE # 100 & # 67

COUNTY SENECA

TOWNSHIP Eden

SECTION 23

T 1 N R 15 E

Pt A = LG R.R. SPK. @ SURFACE

TYPE MONUMENT Pt B = P.K. + WASHER 1/2" DOWN

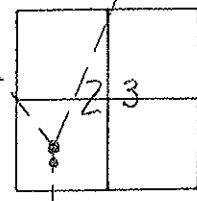
ON SURFACE - BELOW _____

LEFT - <math>\phi</math> PAV'T. - RIGHT ON <math>\phi</math>

TO _____ EDGE PAVEMENT

S.L.M. Pt A = 135 + 05 Pt B = 135 + 32

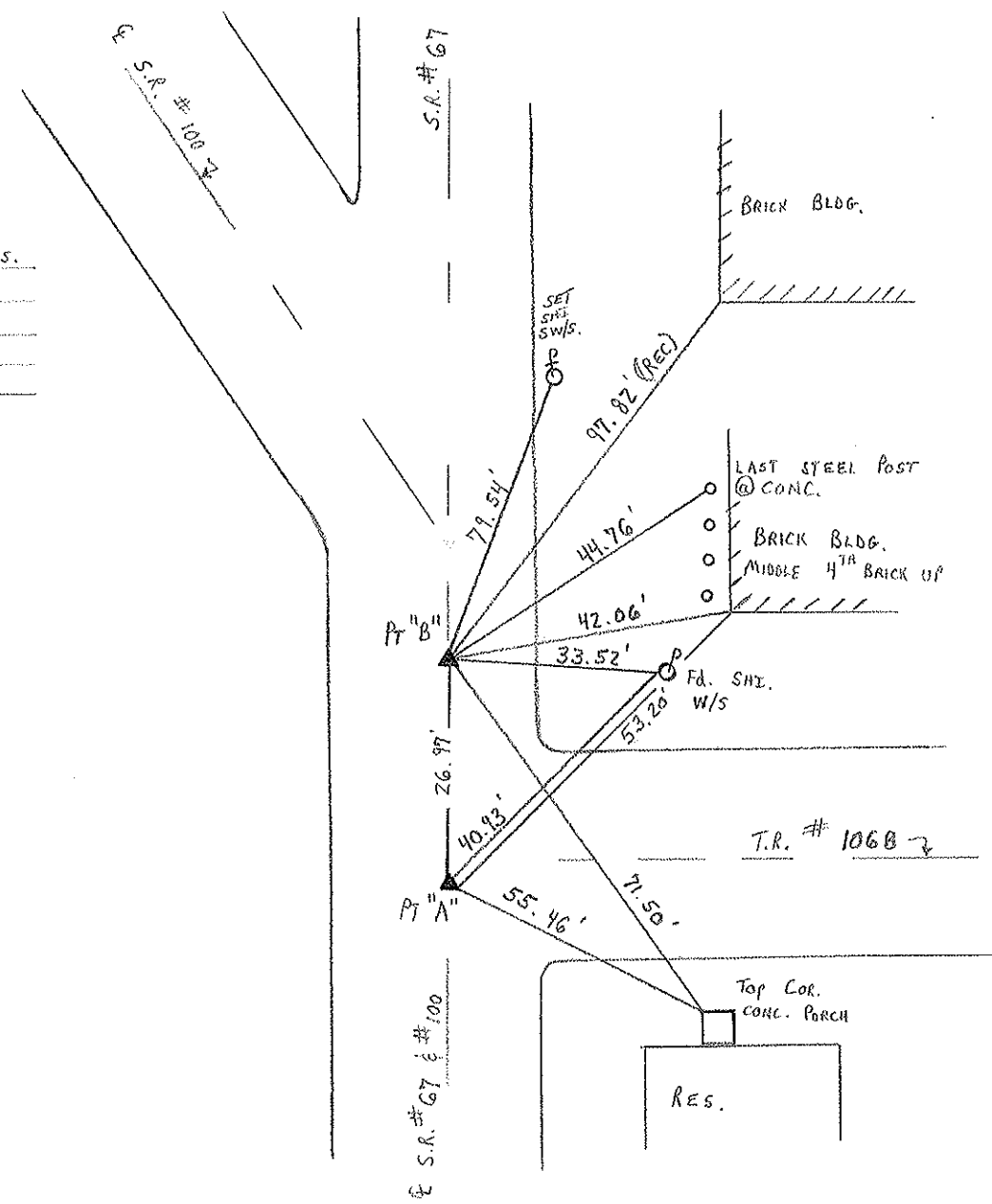
RESET P.K. + WASHER
10-17-00
M.R.C.



RECORD: at Point "B"
 P.I. = $\Delta = 37^{\circ} 27' 00''$ LT. MEAS.
 119 + 82.24 MEAS. - S.R. # 100
 P.K. <math>\phi</math> WASHER ATOP MINE SPK.
 ATOP R.R. SPK. - 1951 PLANS
 SR 67 = 134 + 31.10

Pt "A" = LG R.R. SPK. @ SURFACE
 12.0' TO RT E.O.P.
 \pm 4.0' S. T.R. # 1068
 ON <math>\phi</math> RT # 67
 STA = 135 + 05 S.R. # 67

Pt "B" = P.K. + WASHER 1/2" DOWN
 12.6' TO RT. E.O.P.
 ON <math>\phi</math> S.R. # 67 EXTENDED
 STA = 135 + 32 S.R. # 67



T.R. # 1068