

O.D.O.T. DISTRICT 2 SURVEY OFFICE (USE ONLY)

PERSONNEL \_\_\_\_\_ REFERENCE NO. 10A SHEET 12 OF 12  
 NOTES RHOADES DATE 7/12/17 ROUTE SR 100  
 H.C. O'DONNELL WEATHER CLOUDY COUNTY SENECA  
 R.C. RHOADES TEMP. 79° TOWNSHIP EDEN  
 DWG BY MILLER PID 93677 SECTION 23  
 T 1 N R 15 E

TYPE MONUMENT P.K./WASHER

~~ON SURFACE~~ - BELOW 4"

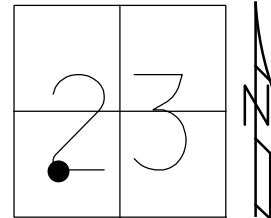
OFFSET  $\varnothing$  PAVEMENT ON LT : RT

- TO - EDGE PAVEMENT

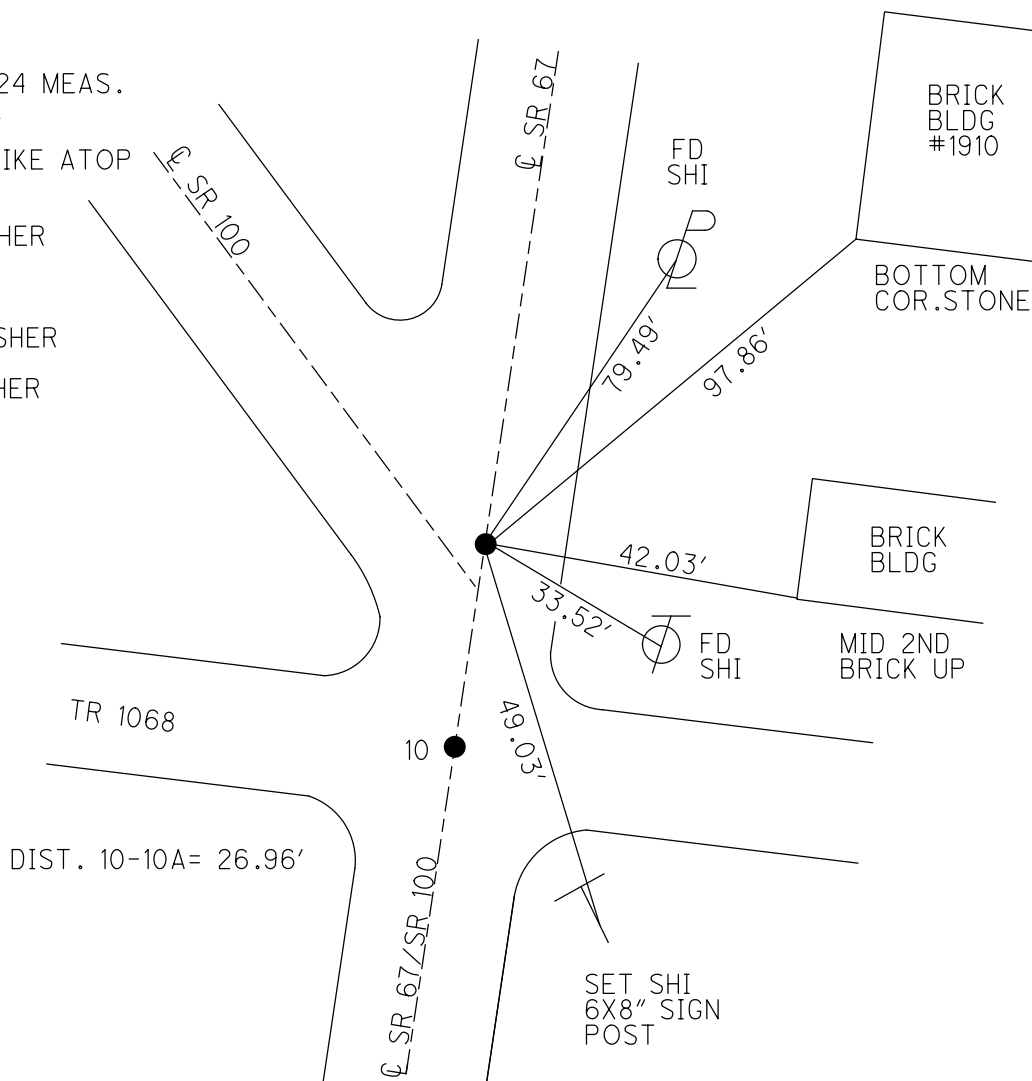
STATION: 119+81.78

HORZ.DATUM: NAD83(2011) GEOID: GEOID 12A

GRID: NORTHING: 494996.062 EASTING: 1800359.905



RECORD: P.I.  
 1951 PLANS  
 STA. 119+82.24 MEAS.  
 FD R.R.SPIKE  
 6" DOWN  
 SET BOLT SPIKE ATOP  
 R.R.SPIKE  
 7/11/78  
 FD P.K./WASHER  
 4" DOWN  
 REF10  
 2/4/16, JFO  
 SET MAG/WASHER  
 11/9/17, JFO  
 FD MAG/WASHER  
 5/31/18, JFO



# O.D.O.T. DISTRICT 2 SURVEY OFFICE

PERSONNEL \_\_\_\_\_

REFERENCE NO. 10

SHEET 10 OF 31

NOTES CANTERBURY

H.C. BARNHISEL

R.C. MOSER

DATE 7-25-00

WEATHER SUN

TEMP. +82°

ROUTE # 100 & # 67

COUNTY SENECA

TOWNSHIP Eden

SECTION 23

T 1 N R 15 E

PT A = LG R.R. SPK. @ SURFACE

TYPE MONUMENT PT B = P.K. + WASHER 1/2" DOWN

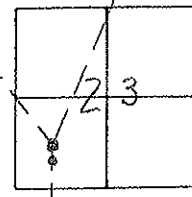
ON SURFACE - BELOW \_\_\_\_\_

LEFT - ☉ PAV'T. - RIGHT ON ♀

TO \_\_\_\_\_ EDGE PAVEMENT

S.L.M. PT A = 135 + 05 PT B = 135 + 32

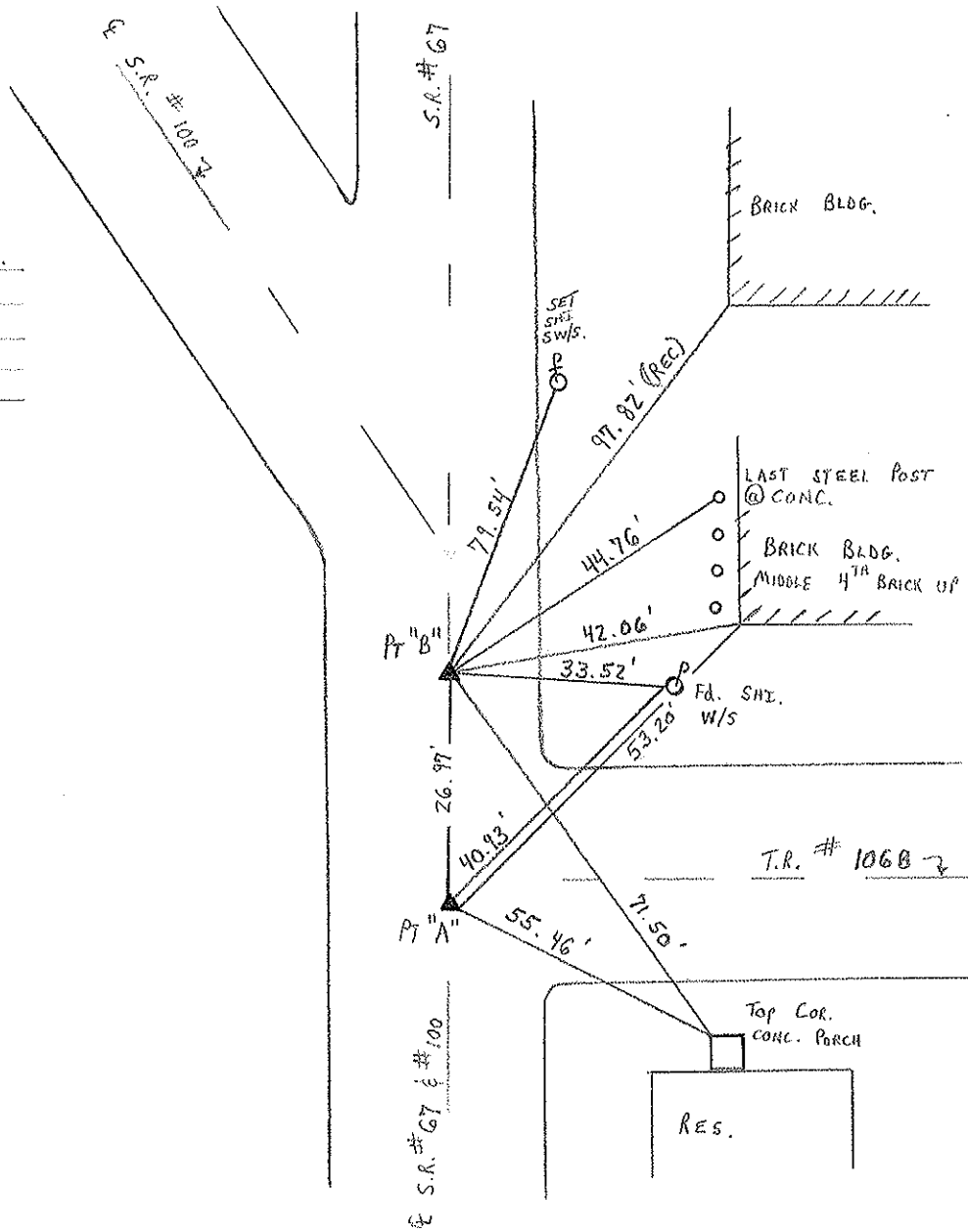
RESET P.K. + WASHER  
10-17-00  
M.R.C.



RECORD: at Point "B"  
P.I. =  $\Delta = 37^\circ 27' 00''$  LT. MEAS.  
119 + 82.24 MEAS. - S.R. # 100  
P.K. & WASHER ATOP MINE SPK.  
ATOP R.R. SPK. - 1951 PLANS  
SR 67 = 134 + 31.10

PT "A" = LG R.R. SPK. @ SURFACE  
12.0' TO RT E.O.P.  
 $\pm 4.0'$  S. T.R. # 1068  
ON ♀ RT # 67  
STA = 135 + 05 S.R. # 67

PT "B" = P.K. + WASHER 1/2" DOWN  
12.6' TO RT. E.O.P.  
ON ♀ S.R. # 67 EXTENDED  
STA = 135 + 32 S.R. # 67



# O.D.O.T. DISTRICT 2 SURVEY OFFICE

PERSONNEL

NOTES Cronin  
 H.C. Ripple  
 R.C. Geyman  
Barbour

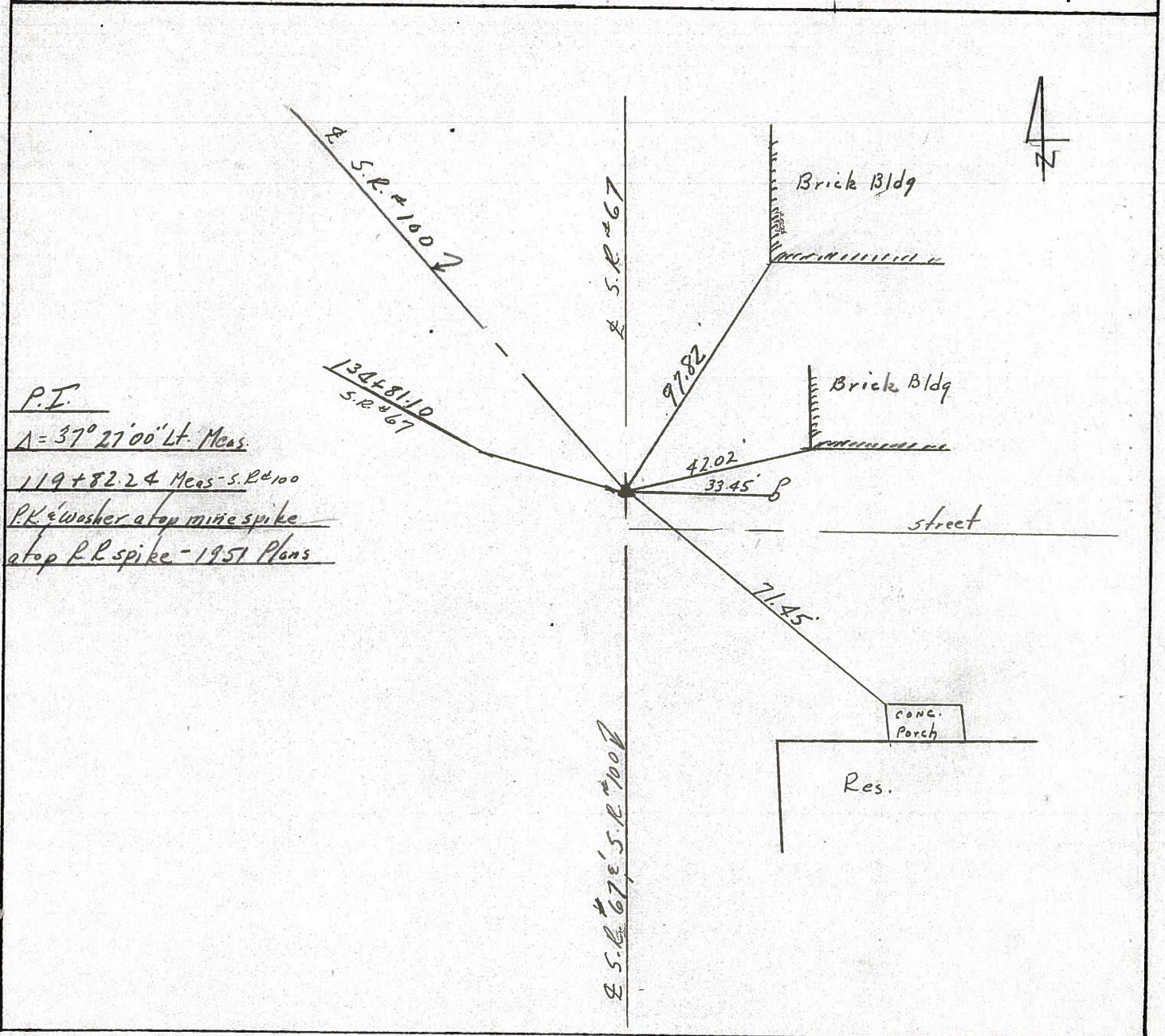
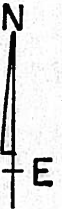
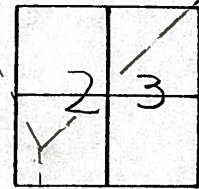
REFERENCE NO. 10  
 DRAWN 11/12/86  
 DATE 11/10/86  
 WEATHER sunny  
 TEMP. 46°

SHEET 10 OF     

ROUTE #100 #67  
 COUNTY Seneca  
 TOWNSHIP Eden  
 SECTION 23  
T1 N R15 E

TYPE MONUMENT P.K. & washer  
 ON SURFACE - BELOW on surface  
 LEFT - PAV'T. - RIGHT & Pav't.  
     TO      EDGE PAVEMENT  
 S.L.M.     

10-A



P.I.  
A = 37° 27' 00" Lt. Meas.  
119+82.24 Meas - S.R. #100  
P.K. & washer atop mine spike  
atop R.R. spike - 1957 Plans

County SENECA S.R. 100 § 67

Township EDEN

Section 23

T. N, R. E

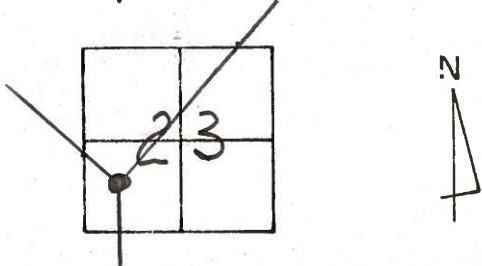
Personnel HOFFMAN  
Householder

Date 6-16-81

Weather OVERCAST

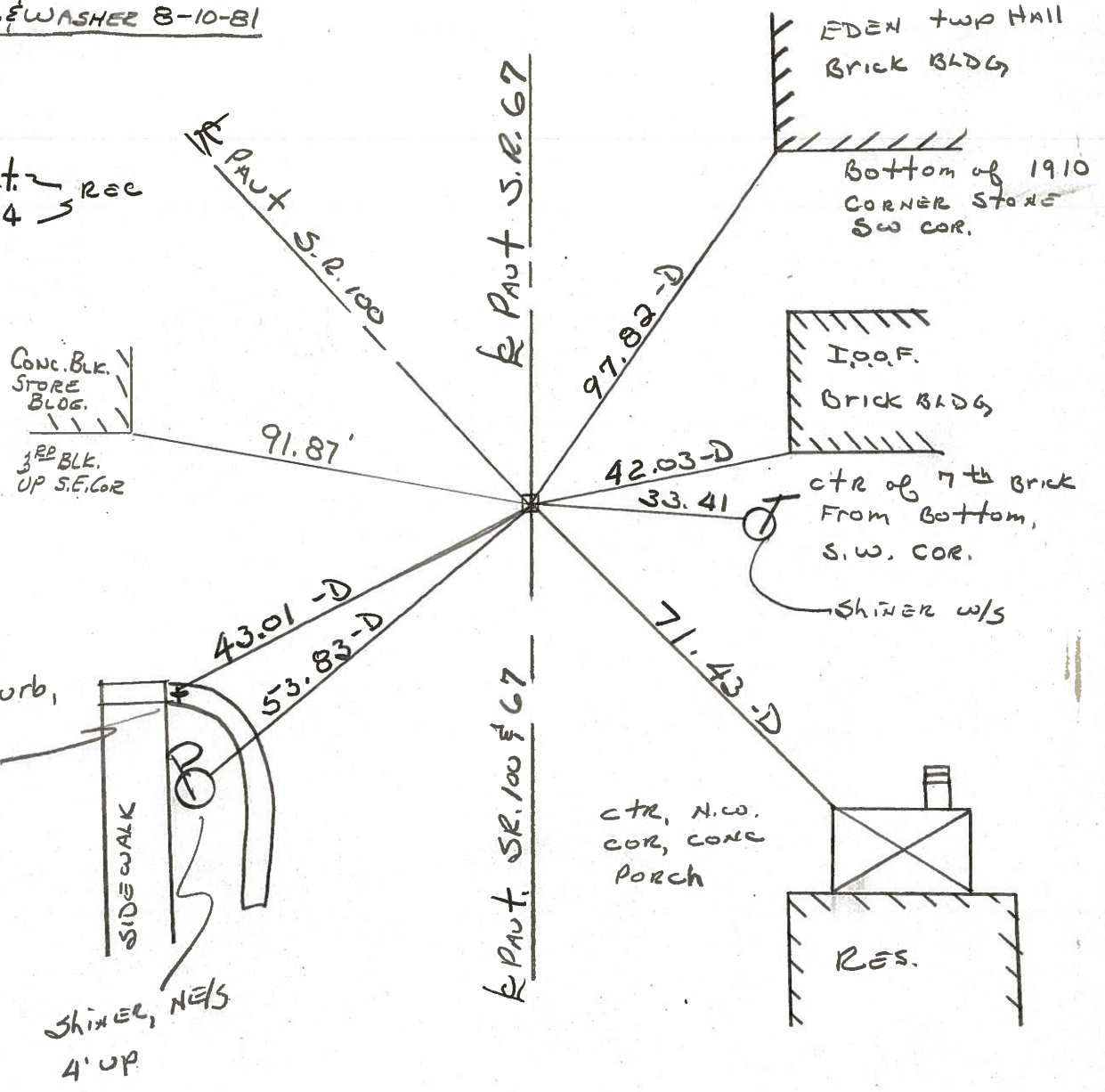
Temp. +75°

~~#10~~ 10-A



Fd. SMALL SQUARE BOAT SPK @ SURFACE PROJECT STA 134 +64  
13.5' to R. Edge PAUT.  
RE-SET PK. & WASHER 8-10-81

P.I.  
Δ = 37° - 27' Lt. ~ rec  
STA. 119 + 82.24



PERSONNEL TITLE PERSONNEL TITLE

CROWIN SCHNEIDER  
RIPPLE MOSSER  
BARBOUR

COUNTY SENECA

DATE 8/3/77

S. R. #100

WEATHER sunny

SEC Crawford Co. Line - North TEMP 75°

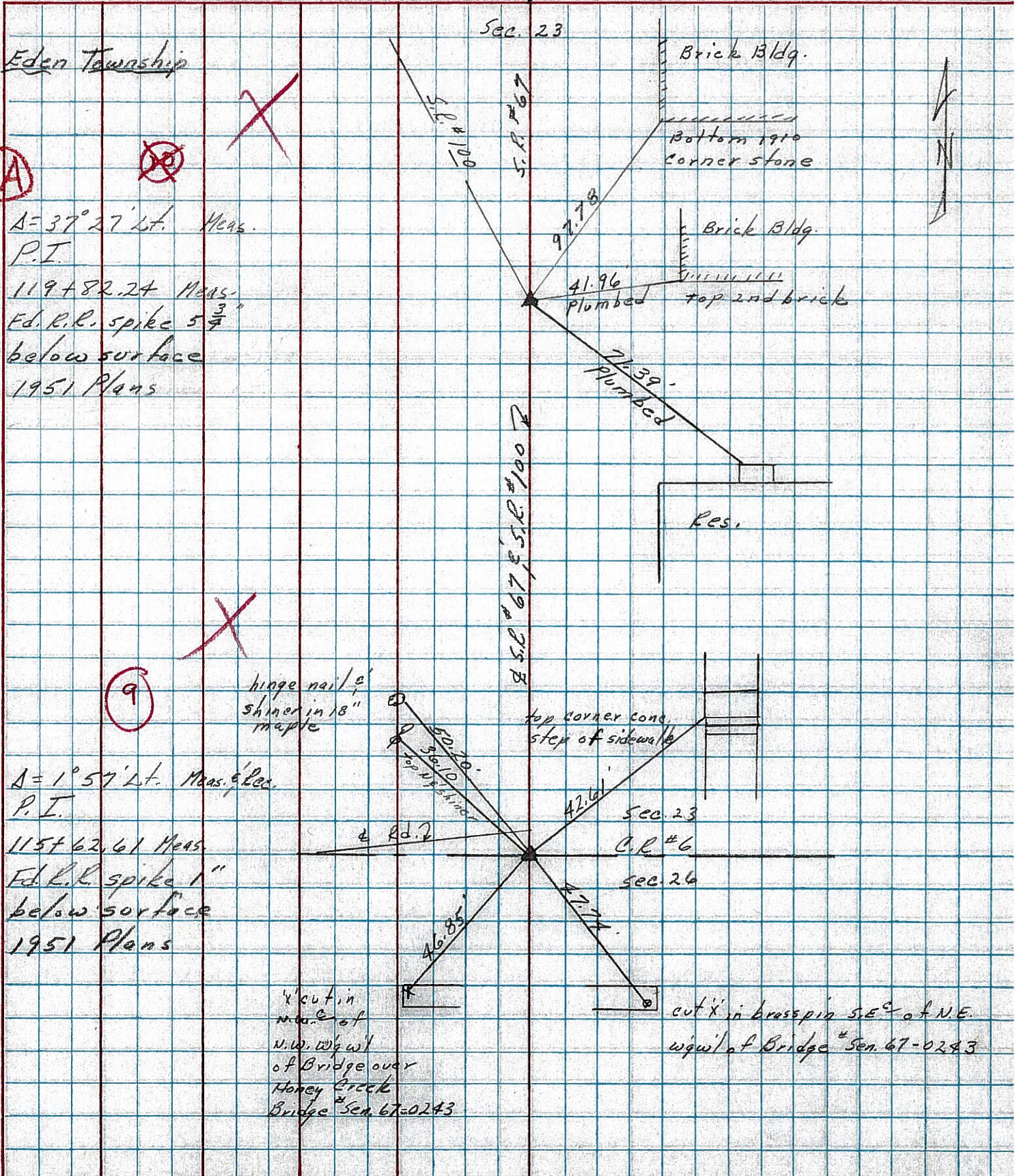
DESCRIPTION Ties for Control Points

JOB NO.

LEFT

CENTER LINE

RIGHT



10-A

9

A = 37° 27' Lt. Meas.  
P.I.  
119+82.24 Meas.  
Ed. R.R. spike 5 3/4"  
below surface  
1951 Plans

A = 1° 57' Lt. Meas. & Rec.  
P.I.  
115+62.61 Meas.  
Ed. R.R. spike 1"  
below surface  
1951 Plans

hinge nail & shiner in 18" maple

cut in m.u.e. of N.W. W. q. of Bridge over Honey Creek Bridge # Sen. 67-0243

cut 'x' in brass in S.E. of N.E. w. q. of Bridge # Sen. 67-0243

Brick Bldg.

Bottom 1910 corner stone

Brick Bldg.

top 2nd brick

Res.

Sec. 23

S.E.C. #67, S.R. #100

Sec. 23

C.R. #6

sec. 26

Rd. 2

| PERSONNEL | TITLE | PERSONNEL | TITLE  |
|-----------|-------|-----------|--------|
| BURNSIDE  |       | ROCCHINI  | E.I.T. |
| SMITH     |       |           |        |
| POWERS    |       |           |        |
| HOLCOMBE  |       |           |        |

COUNTY SENECA DATE 6-2-71  
 S. R. 100 & 67 WEATHER Pt. Cloudy  
 SEC. MELMORE, 0 TEMP. +76°

DESCRIPTION \_\_\_\_\_ LEFT \_\_\_\_\_ CENTER LINE \_\_\_\_\_ RIGHT \_\_\_\_\_ JOB NO. \_\_\_\_\_

10-A

