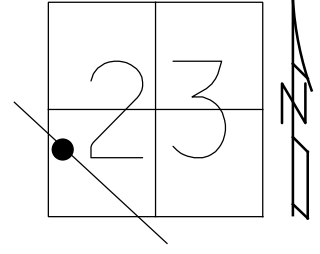


O.D.O.T. DISTRICT 2 SURVEY OFFICE (USE ONLY)

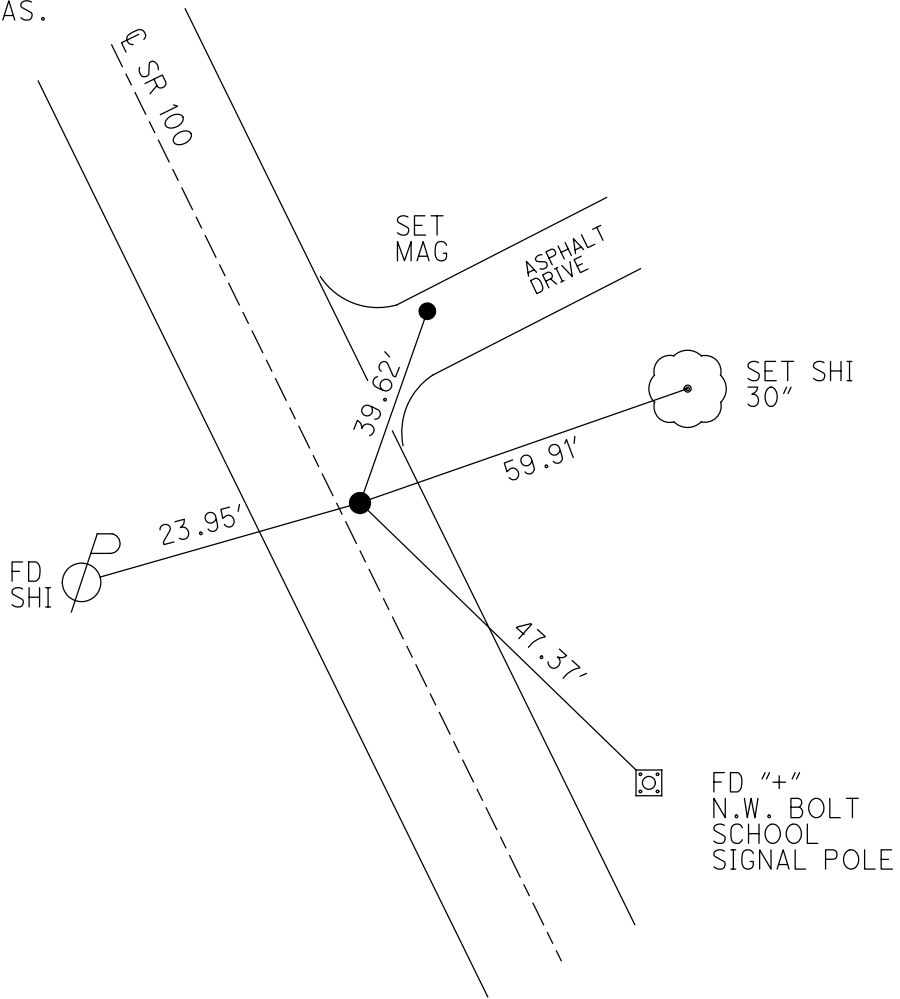
PERSONNEL _____ REFERENCE NO. 11 SHEET 13 OF 46
 NOTES RHODES DATE 6/15/22 ROUTE SR 100
 H.C. AUBLE WEATHER SUNNY COUNTY SENECA
 R.C. WHITAKER TEMP. 82° TOWNSHIP EDEN
 DWG BY WHITAKER PID 95778 SECTION 23
 T 1 N R 15 E

TYPE MONUMENT MAG/WASHER
 ON SURFACE - ~~BELOW~~ ON
 OFFSET 2.2' ~~±~~ : RT
7.9' TO RT EDGE PAVEMENT
 STATION: 135+45



HORZ.DATUM: NAD83(2011) GEOID: 2012A
 GRID: NORTHING: 496412.214 EASTING: 1799605.916

RECORD: P.O.T.
 STA.135+86.80 MEAS.
 SET P.K./WASHER
 ATOP BOAT SPIKE
 ATOP R.R.SPIKE
 8" DOWN
 SET P.K./WASHER
 10-17-00, MRC
 FD BOAT SPIKE
 4" DOWN
 REF11
 1-24-19
 8-19-19, JFO
 FD BOAT SPIKE
 4" DOWN
 REF 11
 1/24/19, JFO
 SET MAG/WASHER
 NEWREF11
 6/15/22, DSA

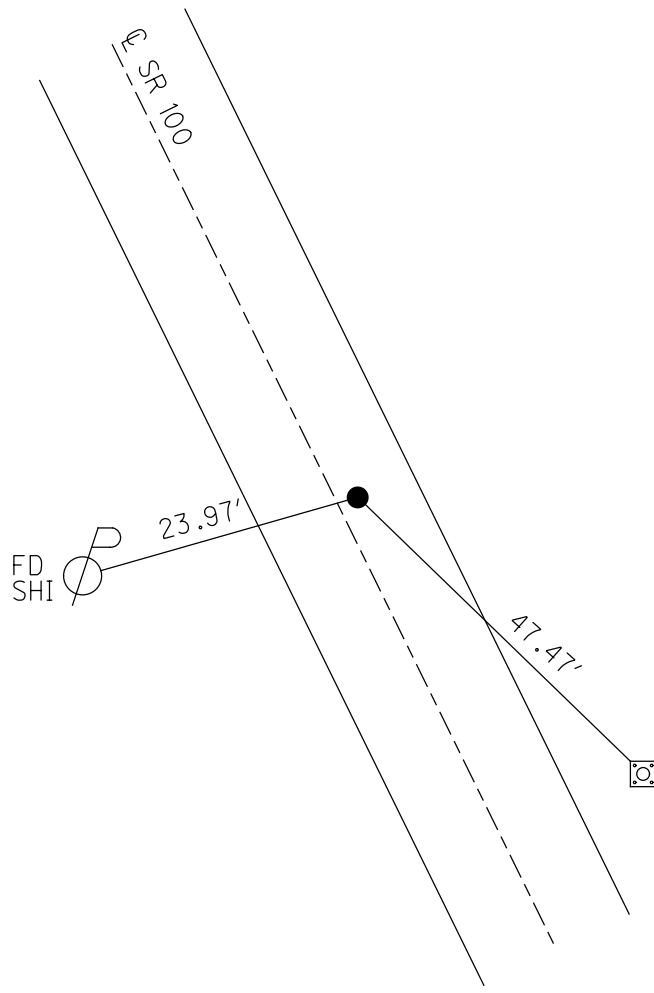
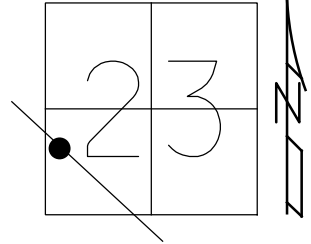


O.D.O.T. DISTRICT 2 SURVEY OFFICE (USE ONLY)

PERSONNEL _____ REFERENCE NO. 11 SHEET 13 OF 38
 NOTES CANTERBURY DATE 7-25-00 ROUTE SR 100
 H.C. BARNHISEL WEATHER SUNNY COUNTY SENECA
 R.C. MOSER TEMP. 82° TOWNSHIP EDEN
 DWG BY NIESE PID 107060 SECTION 23
 T 1 N R 15 E

TYPE MONUMENT BOAT SPIKE
~~ON SURFACE~~ - BELOW 3"
 OFFSET C PAVEMENT 2.2' L : RT
7.9' TO RT EDGE PAVEMENT
 STATION: 135+45

HORZ.DATUM: NAD83(2011) GEOID: 2012A
 GRID: NORTHING: 496412.214 EASTING: 1799605.916



RECORD: P.O.T.
 STA.135+86.80 MEAS.
 SET P.K./WASHER
 ATOP BOAT SPIKE
 ATOP R.R.SPIKE
 8" DOWN
 SET P.K./WASHER
 10-17-00, MRC
 FD BOAT SPIKE
 4" DOWN
 REF11
 1-24-19
 8-19-19, JFO

O.D.O.T. DISTRICT 2 SURVEY OFFICE

PERSONNEL

REFERENCE NO. 11

SHEET 11 OF 31

NOTES CANTERBURY

H.C. BARNHISEL

R.C. MOSEY

DATE 7-25-00

WEATHER SUN

TEMP. +82°

ROUTE #100

COUNTY SENECA

TOWNSHIP EDEN

SECTION 23

T 1 N R 15 E

TYPE MONUMENT BOAT SPIRE

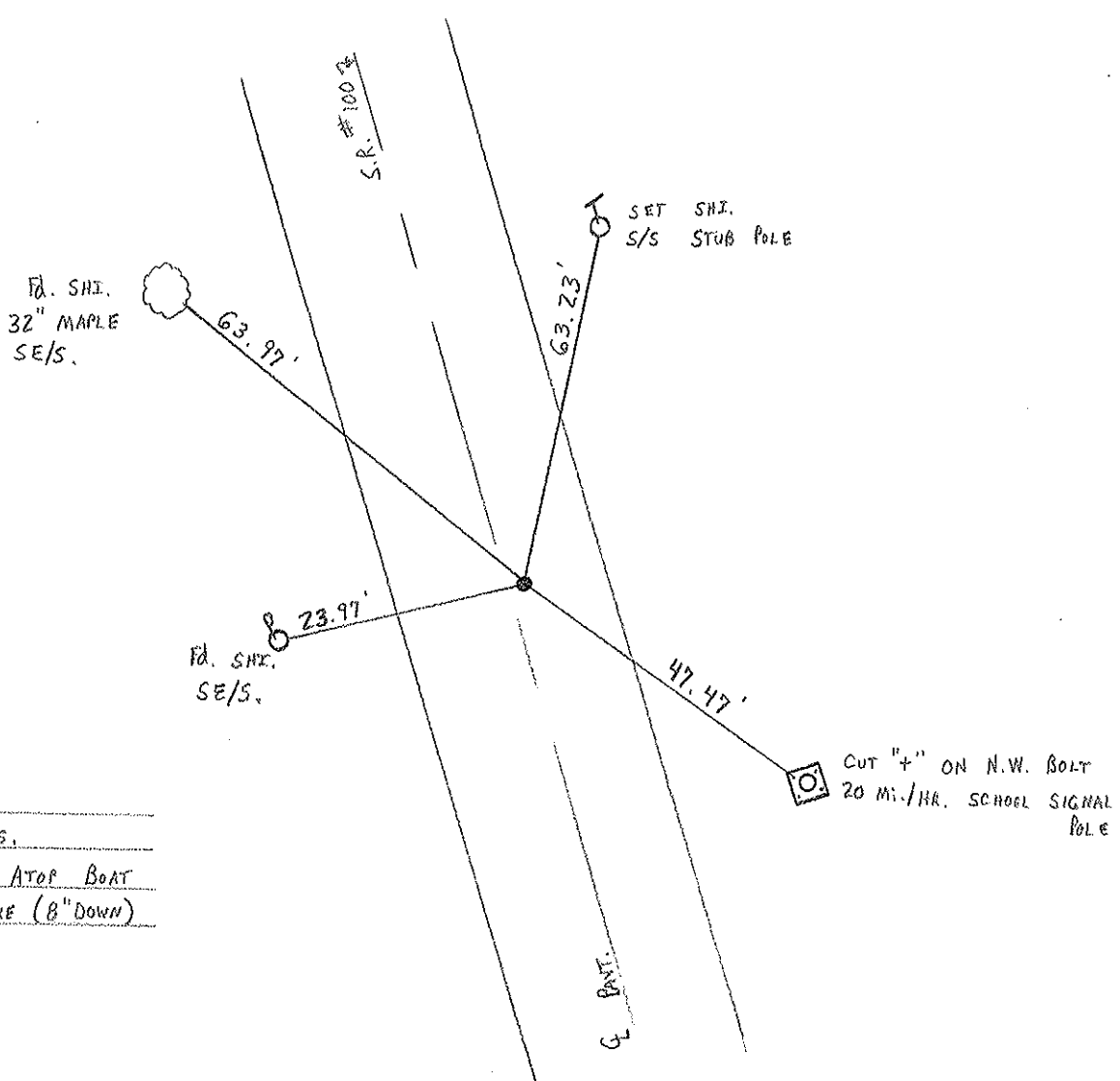
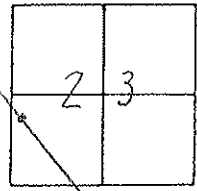
ON SURFACE - BELOW 3" DOWN

LEFT - ℄ PAV'T. - RIGHT 2.2' RT ℄ PAVT

7.9' TO RT. EDGE PAVEMENT

S.L.M. 135 + 45

RESET P.K. + WASHER
 10-17-00
 M.R.C.



RECORD: P.O.T.
135 + 86.80 MEAS.
SET P.K. + WASHER ATOP BOAT
SPIRE ATOP R.R. SPIRE (8" DOWN)

O.D.O.T. DISTRICT 2 SURVEY OFFICE

PERSONNEL

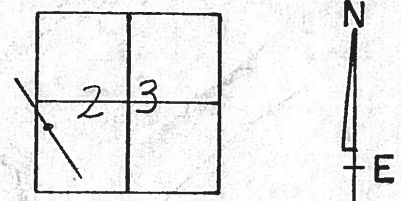
NOTES CRONIN
 H.C. RIDDLE
 R.G. BARBOUR MEAS.
GEYMAN

REFERENCE NO. 11
 DRAW 12/20/88
 DATE 11-28-89
 WEATHER SUNNY Windy
 TEMP. 32°

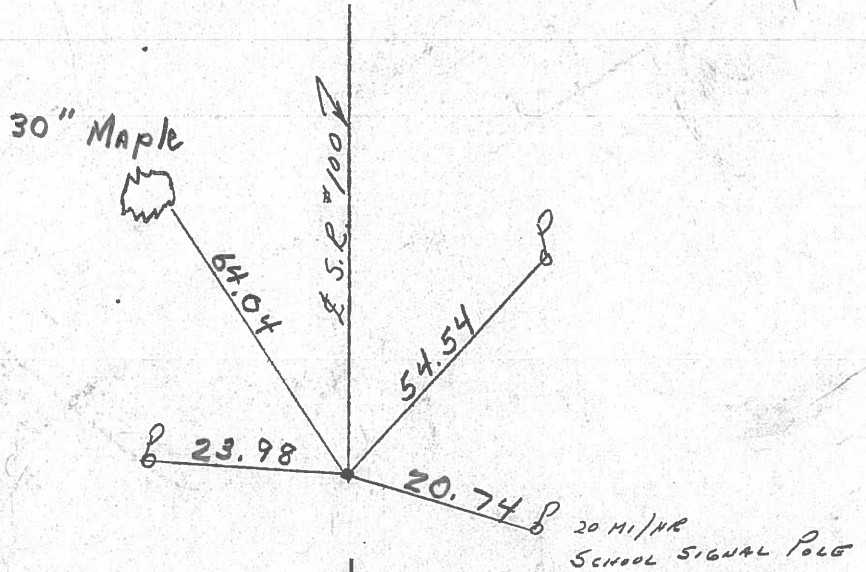
SHEET 11 OF

ROUTE #100
 COUNTY SENECA
 TOWNSHIP EDEN
 SECTION #23
T 1 N R 15 E

TYPE MONUMENT PK & Washer
 ON SURFACE - BELOW SURFACE
 LEFT- & PAV'T. - RIGHT 1 1/2' RT. &
 TO EDGE PAVEMENT
 S.L.M. Sta. 135+86.80

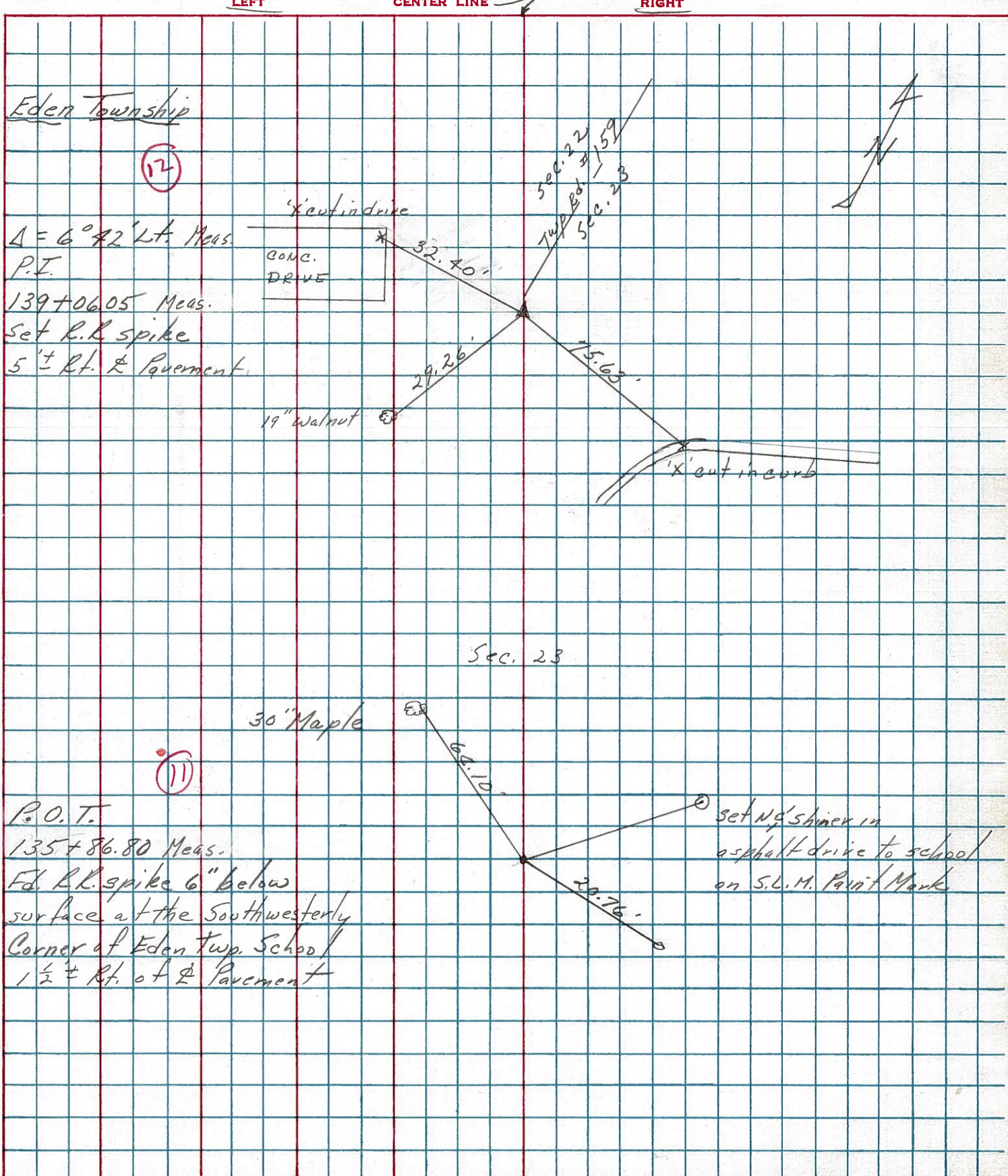


P.O.T.
135+86.80 MEAS
SET PK & WASHER ATOP
BOAT SPIKE ATOP P.R.R.
SPIKE (8" DOWN)



PERSONNEL	TITLE	PERSONNEL	TITLE	COUNTY	SENECA	DATE	3/20/78
CRONIN		SCHNEIDER		S. R. #	100	WEATHER	sunny-windy
RIPPLE		MOSSER		SEC.	MELMORE - NORTH	TEMP.	40°
		BARBOUR					

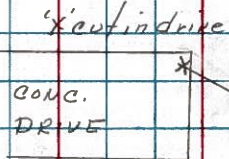
DESCRIPTION TIES For Control Points JOB NO. _____



Eden Township

12

$\Delta = 6^\circ 42' \text{ Lt. Meas.}$
 P.I.
 139+06.05 Meas.
 Set R.L. spike
 5' ± Rt. & Pavement



19" Walnut

Sec. 23

30" Maple

11

P.O.T.
 135+86.80 Meas.
 Ed. R.L. spike 6" below
 surface at the Southwesterly
 Corner of Eden Twp. School
 1/2 ± Rt. of & Pavement

set N.E. shiner in
 asphalt drive to school
 on S.L.M. Paint Mark