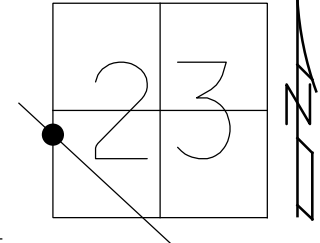


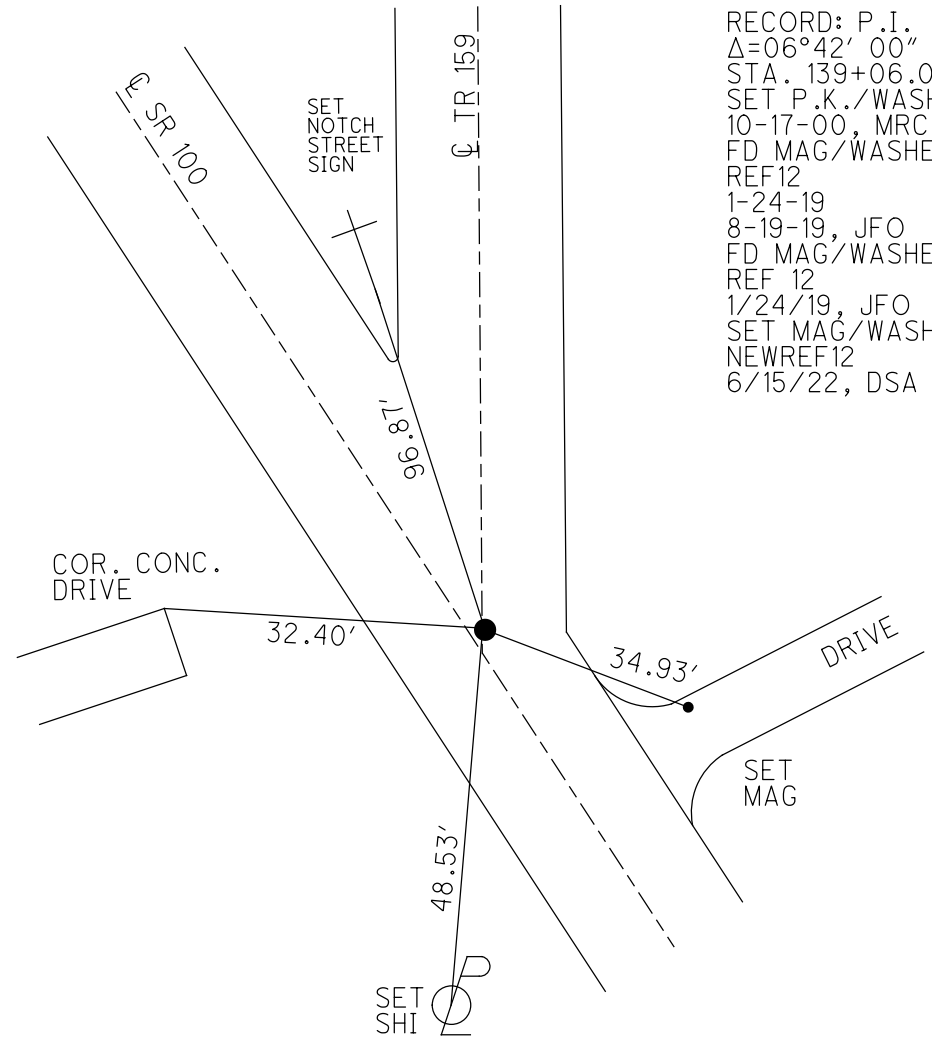
O.D.O.T. DISTRICT 2 SURVEY OFFICE (USE ONLY)

PERSONNEL _____ REFERENCE NO. 12 SHEET 14 OF 46
 NOTES RHOADES DATE 6/15/22 ROUTE SR 100
 H.C. AUBLE WEATHER SUNNY COUNTY SENECA
 R.C. WHITAKER TEMP. 82° TOWNSHIP EDEN
 DWG BY WHITAKER PID 95778 SECTION 23
 T 1 N R 15 E

TYPE MONUMENT MAG/WASHER
 ON SURFACE - ~~BELOW~~ ON
 OFFSET \varnothing PAVEMENT 4.7' ~~LT~~ : RT
15.5' TO LT EDGE PAVEMENT
 STATION: 138+62



HORIZ.DATUM: NAD83(2011) GEOID: 2012A
 GRID: NORTHING: 496694.078 EASTING: 1799455.981



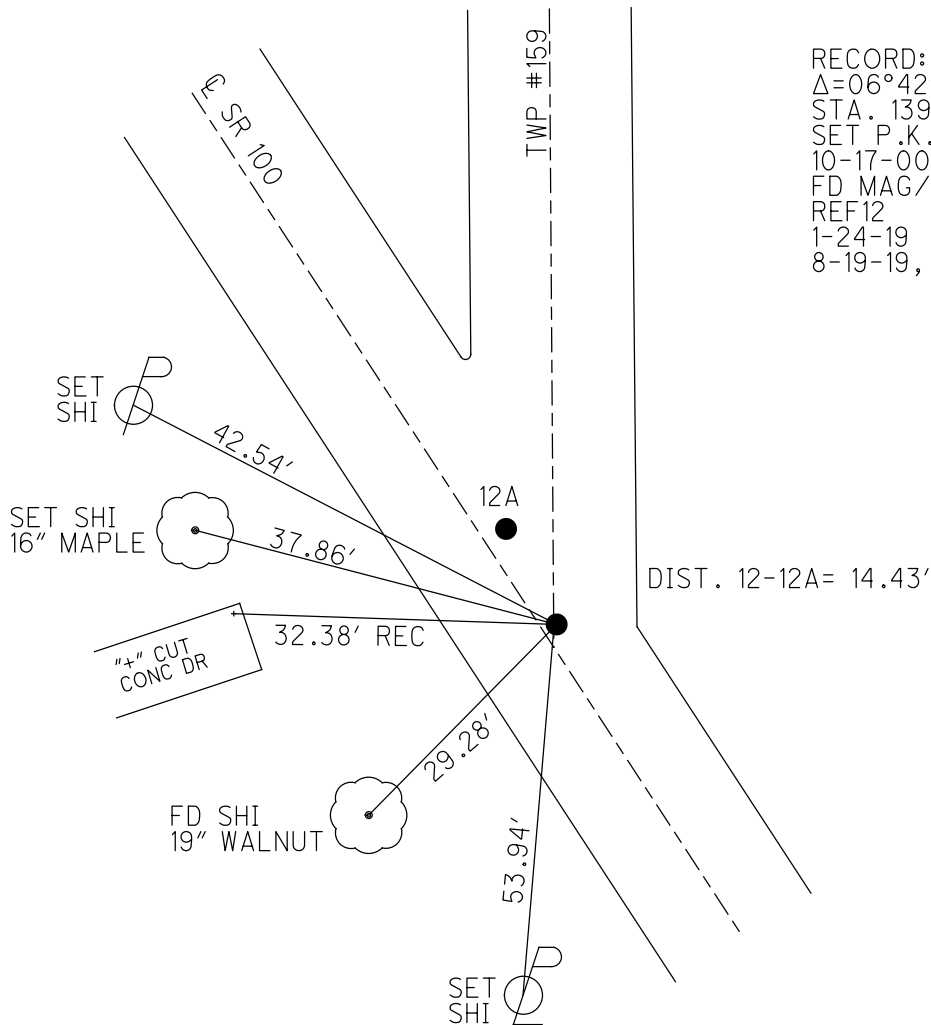
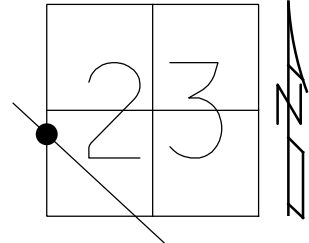
RECORD: P.I.
 $\Delta=06^{\circ}42'00''$
 STA. 139+06.05
 SET P.K./WASHER
 10-17-00, MRC
 FD MAG/WASHER
 REF12
 1-24-19
 8-19-19, JFO
 FD MAG/WASHER
 REF 12
 1/24/19, JFO
 SET MAG/WASHER
 NEWREF12
 6/15/22, DSA

O.D.O.T. DISTRICT 2 SURVEY OFFICE (USE ONLY)

PERSONNEL _____ REFERENCE NO. 12 SHEET 14 OF 38
 NOTES CANTERBURY DATE 7-25-00 ROUTE SR 100
 H.C. BARNHISEL WEATHER SUNNY COUNTY SENECA
 R.C. MOSER TEMP. 82° TOWNSHIP EDEN
 DWG BY NIESE PID 107060 SECTION 23
 T 1 N R 15 E

TYPE MONUMENT P.K./WASHER
 ON SURFACE - ~~BELOW~~ ON
 OFFSET ϕ PAVEMENT 4.7' ~~RT~~ : RT
15.5' TO LT EDGE PAVEMENT
 STATION: 138+62

HORZ.DATUM: NAD83(2011) GEOID: 2012A
 GRID: NORTHING: 496694.078 EASTING: 1799455.981



RECORD: P.I.
 $\Delta=06^{\circ}42' 00''$
 STA. 139+06.05
 SET P.K./WASHER
 10-17-00, MRC
 FD MAG/WASHER
 REF12
 1-24-19
 8-19-19, JFO

O.D.O.T. DISTRICT 2 SURVEY OFFICE

PERSONNEL

REFERENCE NO. 12

SHEET 12 OF 31

NOTES CANTERBURY

H.C. BARNISEL

R.C. MOSE

DATE 7-25-00

WEATHER SUN

TEMP. +82°

ROUTE #100

COUNTY SENECA

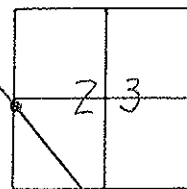
TOWNSHIP EDEN

SECTION 23

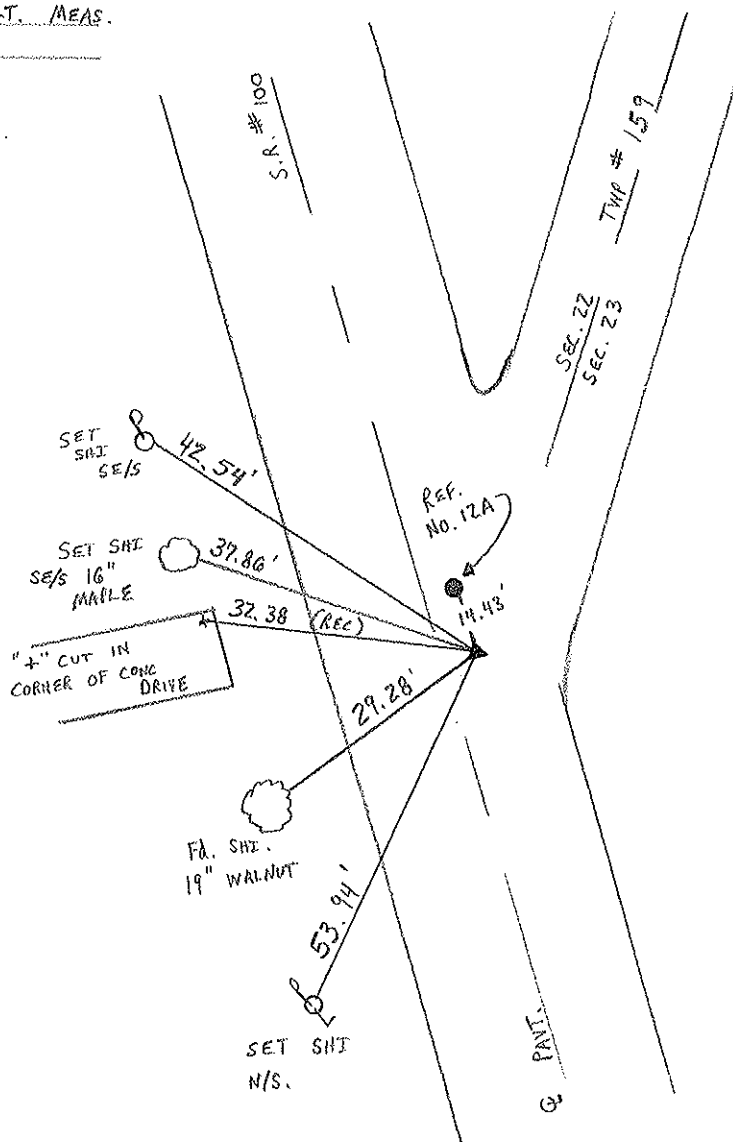
T. 1 N. R 15 E

TYPE MONUMENT P.K. + WASHER
 ON SURFACE - ~~BELOW~~ SURFACE
 LEFT - Q PAV'T. - RIGHT 4.7' RT Q PAVT
15.5' TO LT EDGE PAVEMENT
 S.L.M. 138 + 62

RESET P.K. + WASHER
 10-17-00
 M.R.C.



RECORD: P.I.
 $\Delta = 06^\circ - 42' - 00''$ LT. MEAS.
139 + 06.05



O.D.O.T. DISTRICT 2 SURVEY OFFICE

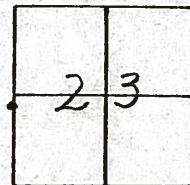
PERSONNEL

NOTES CRONIN
 H.C. LIPPLE
 R.C. BARBOUR } MEAS.
 GEYMAN }

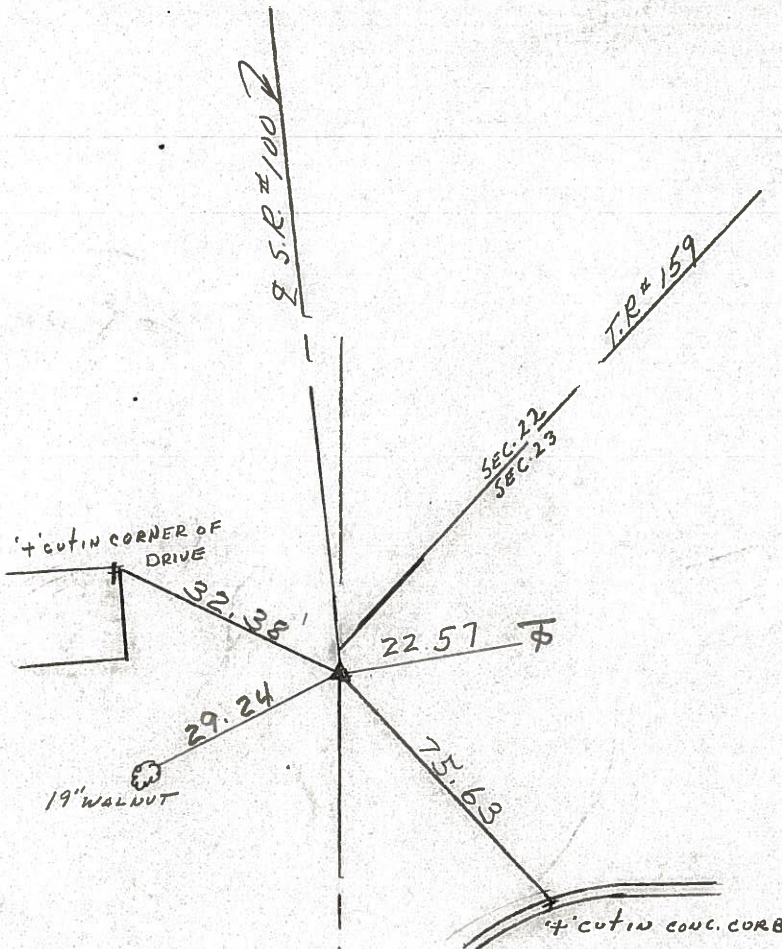
REFERENCE NO. 12
 DRAWN 12/20/88
 DATE 11-28-89
 WEATHER SUNNY
 TEMP. 32°

SHEET 12 OF _____
 ROUTE #100
 COUNTY SENECA
 TOWNSHIP EDEN
 SECTION 23
T1N R15E

TYPE MONUMENT R.R. SPIKE
 ON SURFACE - BELOW
 LEFT- & PAV'T. - RIGHT 5'
 TO EDGE PAVEMENT
 S.L.M. Sta. 139+06.05



P.I.
 $\Delta = 06^{\circ}42'00''$ Lt. Mens
139+06.05



PERSONNEL	TITLE	PERSONNEL	TITLE	COUNTY	SENECA	DATE	3/20/78
CRONIN		SCHNEIDER		S. R.	# 100	WEATHER	sunny-windy
RIPLIE		MOSSER		SEC	MELMORE - NORTH	TEMP.	40°
		BARBOUR					

DESCRIPTION TIES FOR CONTROL POINTS

LEFT CENTER LINE RIGHT JOB NO.

