

O.D.O.T. DISTRICT 2 SURVEY OFFICE (USE ONLY)

PERSONNEL

REFERENCE NO. 12A

SHEET 15 OF 38

NOTES CANTERBURY

DATE 7-25-00

ROUTE SR 100

H.C. BARNHISEL

WEATHER SUNNY

COUNTY SENECA

R.C. MOSE

TEMP. 82°

TOWNSHIP EDEN

DWG BY NIESE PID 107060

SECTION 22 AND 23

T 1 N R 15 E

TYPE MONUMENT P.K./WASHER

ON SURFACE - ~~BELOW~~ ON

OFFSET  $\varnothing$  PAVEMENT 4.3' ~~±~~ : RT

16.6' TO LT EDGE PAVEMENT

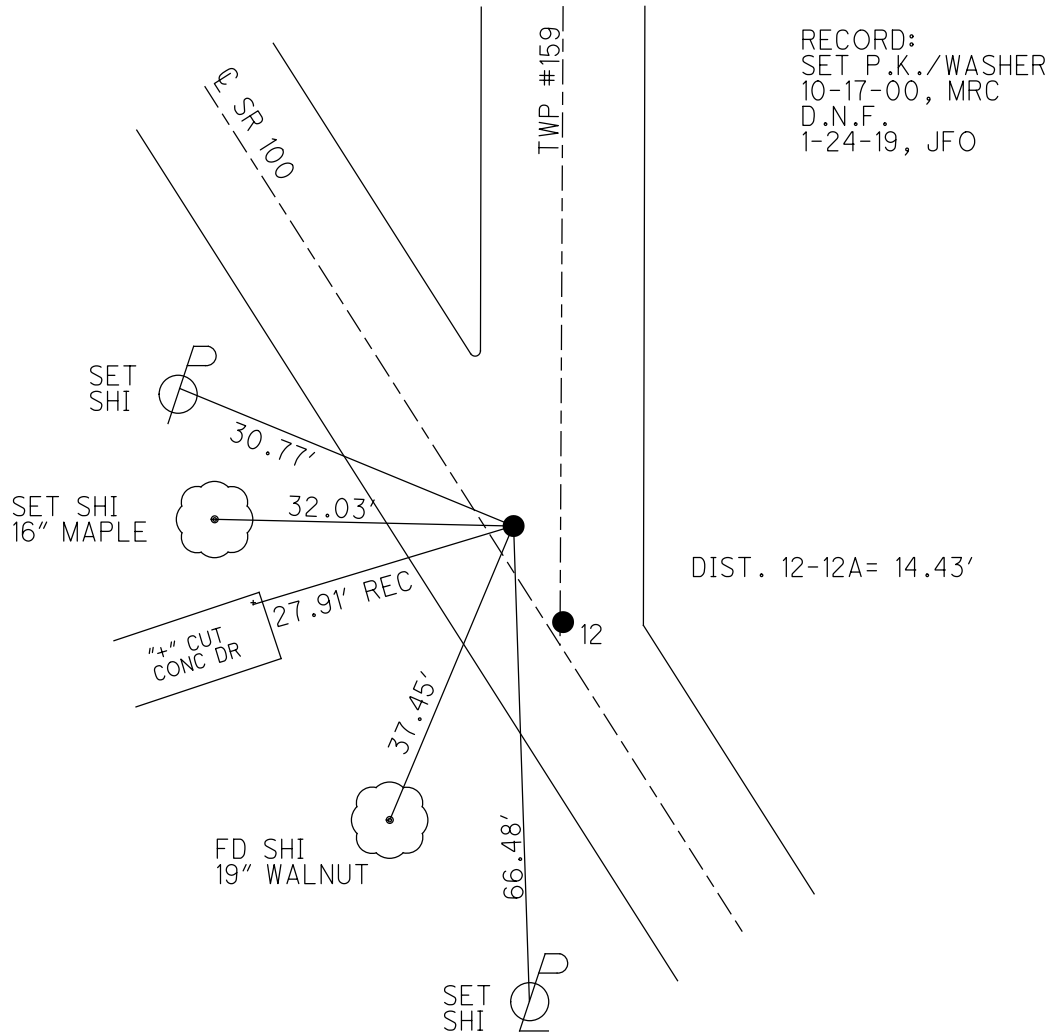
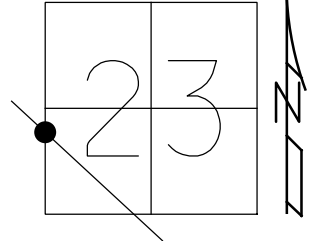
STATION: 138+76

HORIZ.DATUM: -

GEOID: -

GRID: NORTHING: -

EASTING: -



RECORD:  
 SET P.K./WASHER  
 10-17-00, MRC  
 D.N.F.  
 1-24-19, JFO

DIST. 12-12A= 14.43'

# O.D.O.T. DISTRICT 2 SURVEY OFFICE

PERSONNEL

REFERENCE NO. 12A

SHEET 13 OF 31

NOTES CANTERBURY

H.C. BARNHISEL

R.C. MOSER

DATE 7-25-00

WEATHER SUN

TEMP. +82°

ROUTE #100

COUNTY SENECA

TOWNSHIP EDEN

SECTION 22 & 23

T. 1 N. R 15 E.

TYPE MONUMENT P.K. + WASHER

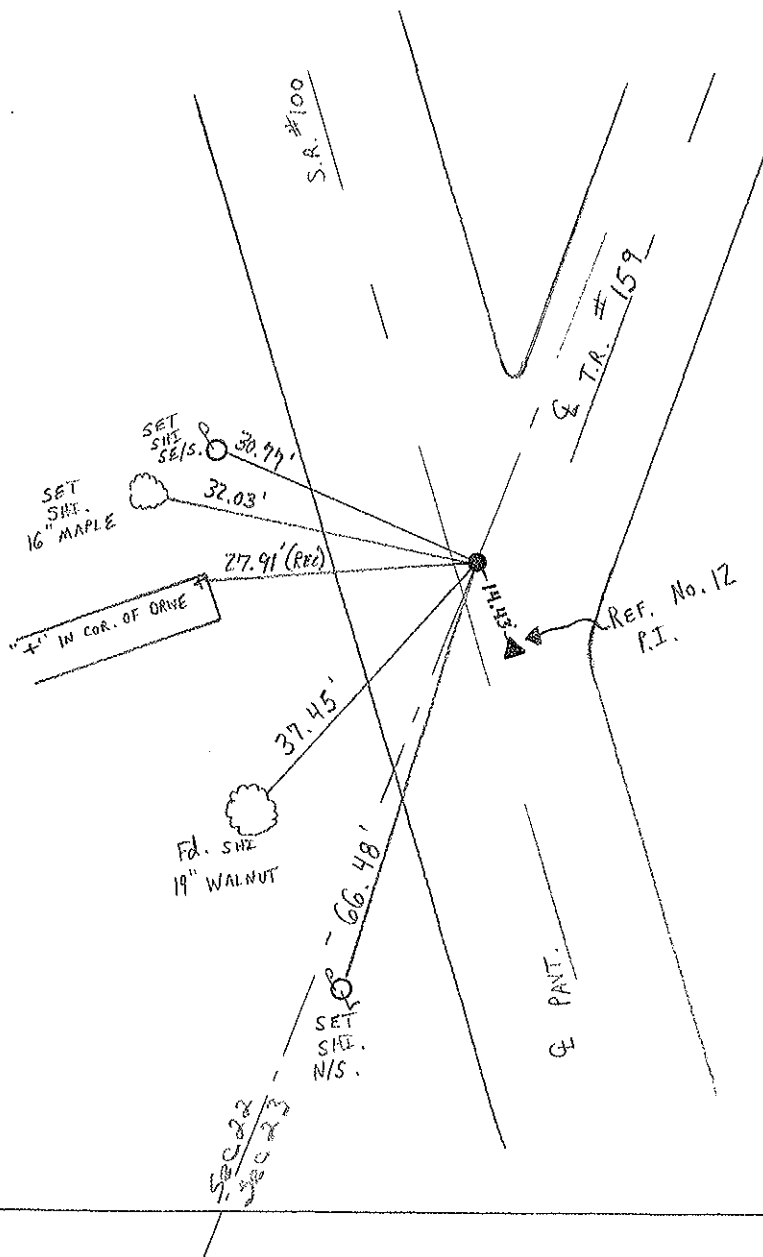
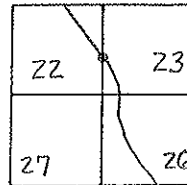
ON SURFACE - ~~BELOW~~ SURFACE

~~LEFT - & PAV'T. - RIGHT~~ 4.3' RT &

16.6' TO LT. EDGE PAVEMENT

S.L.M. 138 + 76

RESET P.K. + WASHER  
 10-19-00  
 M.R.C.



Drawn B. Garrett

# O.D.O.T. DISTRICT 2 SURVEY OFFICE

PERSONNEL

REFERENCE NO. 12A

SHEET 1 OF 1

NOTES Cheney

H.C. Geyman

R.C. Luce

DATE: 6-25-93

WEATHER Nice

TEMP. 80

ROUTE SR 100

COUNTY Seneca

TOWNSHIP Eden

SECTION 22 & 23

T. 1 N. R. 15 E.

TYPE MONUMENT PK & Washer

ON SURFACE - BELOW Surface

LEFT- & PAW'T. - RIGHT 3.5'

14.5' TO Lt. EDGE PAVEMENT

S.L.M. 140 + 92.07 (Culvert Sta)

