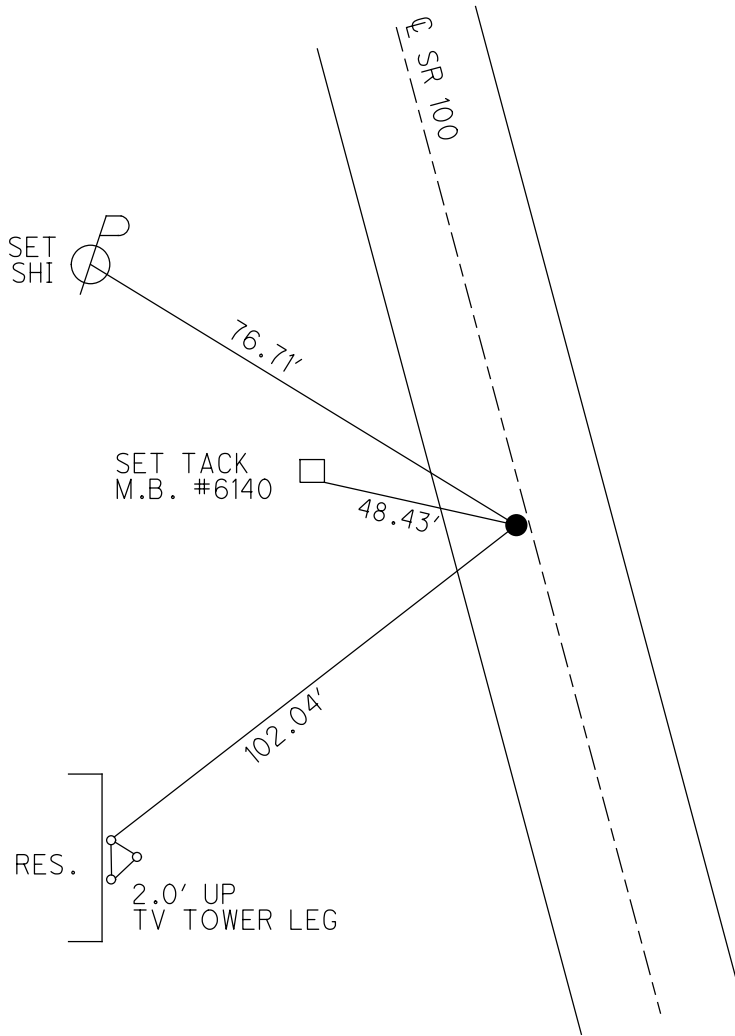
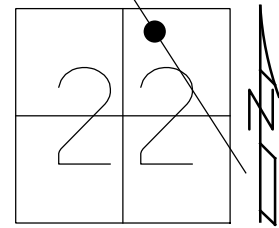


O.D.O.T. DISTRICT 2 SURVEY OFFICE (USE ONLY)

PERSONNEL _____ REFERENCE NO. 13 SHEET 16 OF 46
 NOTES RHOADES DATE 6/15/22 ROUTE SR 100
 H.C. AUBLE WEATHER SUNNY COUNTY SENECA
 R.C. WHITAKER TEMP. 82° TOWNSHIP EDEN
 DWG BY WHITAKER PID 95778 SECTION 22
 T 1 N R 15 E

TYPE MONUMENT MAG/WASHER
 ON SURFACE - ~~BELOW~~ ON
 OFFSET CL PAVEMENT 2.6' LT : ~~RT~~
7.9' TO RT EDGE PAVEMENT
 STATION: 168+77

HORZ.DATUM: NAD83(2011) GEOID: 2012A
 GRID: NORTHING: 499176.428 EASTING: 1797734.422



RECORD: P.O.T.
 STA.169+27.01
 FD P.K.SHANK
 ATOP P.K./WASHER
 ATOP R.R. SPIKE
 SET P.K./WASHER
 10-18-00, MRC
 FD P.K. NAIL
 REF13
 1-24-19
 8-19-19, JFO
 SET MAG/WASHER
 NEWREF13
 6/15/22, DSA

O.D.O.T. DISTRICT 2 SURVEY OFFICE (USE ONLY)

PERSONNEL

REFERENCE NO. 13

SHEET 16 OF 38

NOTES CANTERBURY

DATE 7-25-00

ROUTE SR 100

H.C. BARNHISEL

WEATHER SUNNY

COUNTY SENECA

R.C. MOSER

TEMP. 82°

TOWNSHIP EDEN

DWG BY NIESE PID 107060

SECTION 22

T 1 N R 15 E

TYPE MONUMENT P.K. SHANK

~~ON SURFACE~~ - BELOW 3"

OFFSET \odot PAVEMENT 2.6' LT : ~~RT~~

7.9' TO ~~RT~~ EDGE PAVEMENT

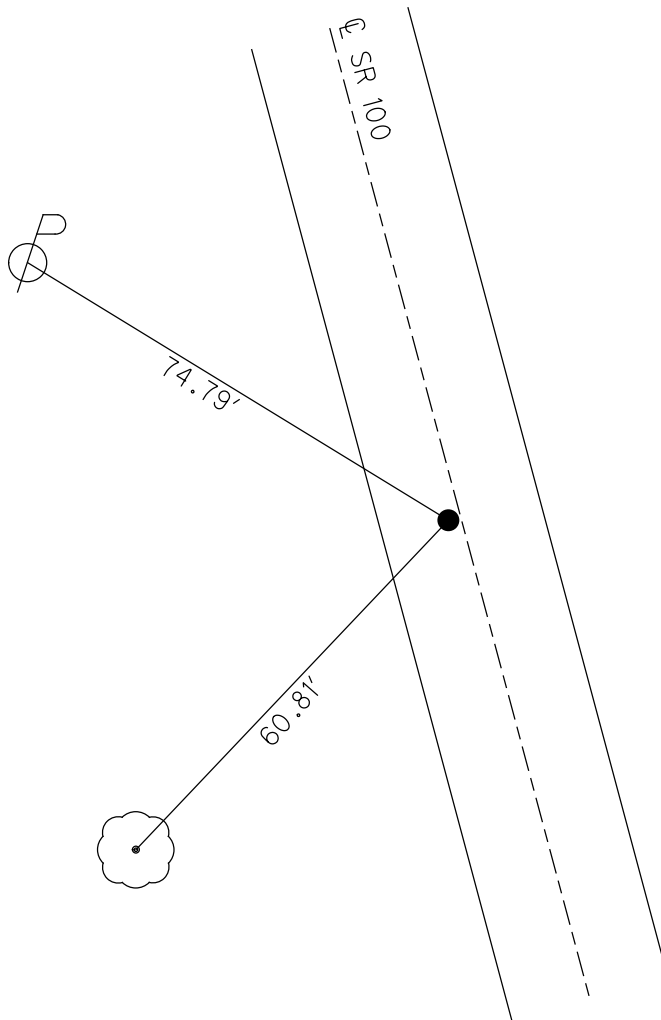
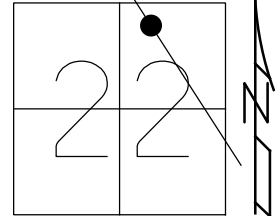
STATION: 168+77

HORZ.DATUM: NAD83(2011)

GEOID: 2012A

GRID: NORTHING: 499176.428

EASTING: 1797734.422



RECORD: P.O.T.
STA.169+27.01
FD P.K.SHANK
ATOP P.K./WASHER
ATOP R.R. SPIKE
SET P.K./WASHER
10-18-00, MRC
FD P.K. NAIL
REF13
1-24-19
8-19-19, JFO

O.D.O.T. DISTRICT 2 SURVEY OFFICE

PERSONNEL _____

REFERENCE NO. 13

SHEET 14 OF 31

NOTES CANTERBURY

H.C. BARNHISEL

R.C. MOSEK

DATE 7-25-00

WEATHER SUN

TEMP. +82°

ROUTE #100

COUNTY SENECA

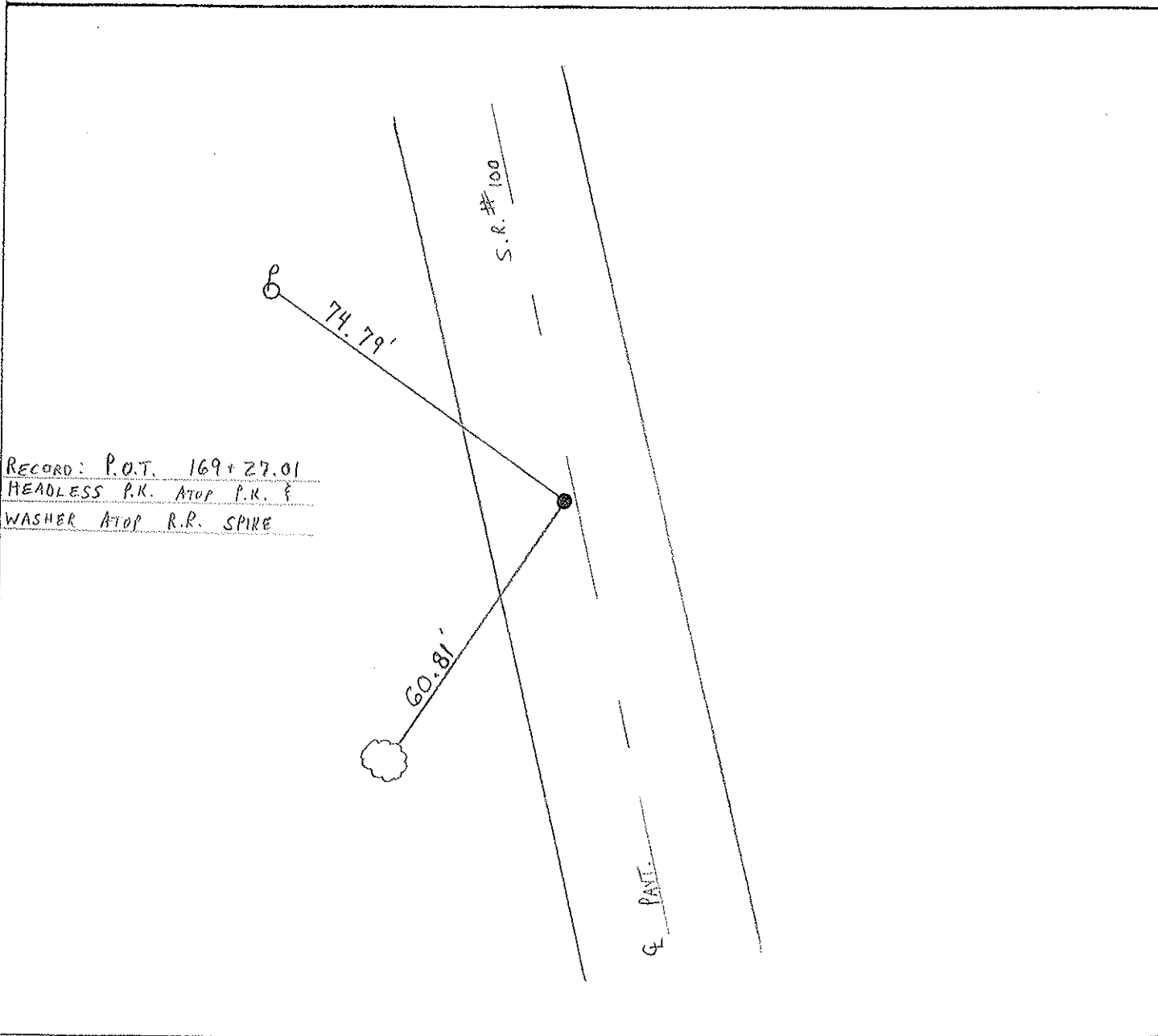
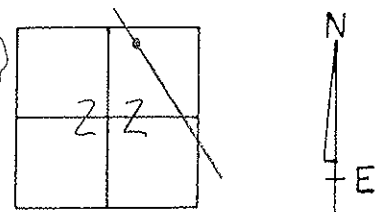
TOWNSHIP EDEN

SECTION 22

T. 1 N. R. 15 E.

TYPE MONUMENT P.K. SHANK
 ON ~~SURFACE~~ - BELOW 3" DOWN
 LEFT-~~C~~ PAV'T. - RIGHT 2.6' LT & PAVT.
8.3' TO LT EDGE PAVEMENT
 S.L.M. 168 + 77

RESET P.K. + WASHER
 10-18-00
 M.R.C.



RECORD: P.O.T. 169 + 27.01
 HEADLESS P.K. ATOP P.K. &
 WASHER ATOP R.R. SPIKE

O.D.O.T. DISTRICT 2 SURVEY OFFICE

PERSONNEL

NOTES CRONIN

H.C. RIPPLE

R.C. BARBOUR, MEAS.

GEYMAN

REFERENCE NO. 13

DRAWN 12/20/88

DATE 11-28-89

WEATHER SUNNY Windy

TEMP. 32

SHEET 13 OF

ROUTE #100

COUNTY SENECA

TOWNSHIP EDEN

SECTION 22

T 1 N R 15 E

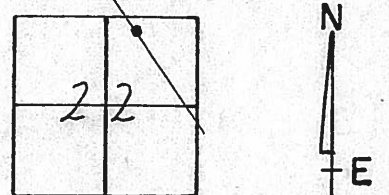
TYPE MONUMENT Headless P.K.

ON SURFACE - BELOW SURFACE

LEFT - ¢ PAV'T. - RIGHT 2' LT. ¢

TO EDGE PAVEMENT

S.L.M. Sta 169+27.01

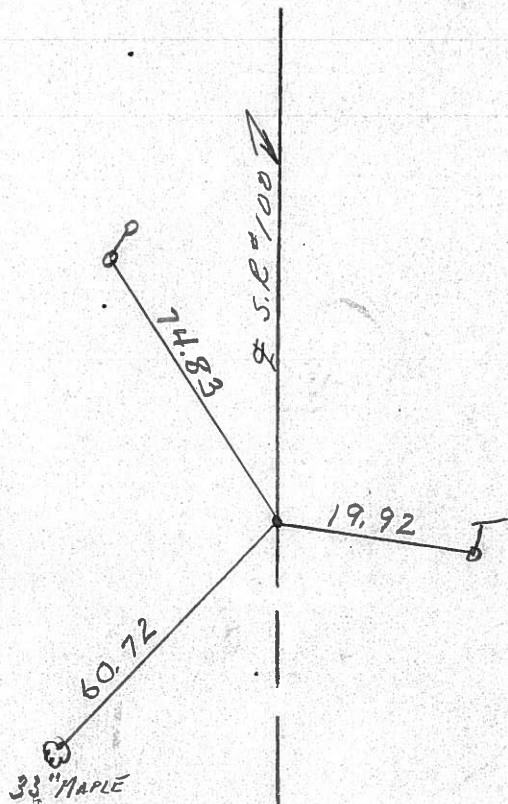


P.O.T.

169+27.01 MEAS.

Headless P.K. Atop P.K.

¢ WASHER ATOP R.R. SPIKE



PERSONNEL	TITLE	PERSONNEL	TITLE
CRONIN		SCHNEIDER	
RIPPLE		MOSSER	
		BARBOUR	

COUNTY SENECA DATE 3/20/78

S. R. # 100 WEATHER sunny-windy

SEC. MELMORE-NORTH TEMP. 45°

DESCRIPTION TIES FOR CONTROL POINTS JOB NO. _____

LEFT CENTER LINE RIGHT

Eden Township

Sec. 15

47" Ash



56.31'

R/W Mon.



30.40'

21.86'



P.O.T.

193+58.94 Meas.

set R.R. Spike (Ponched)

2 1/2' ± R.L. of Pavement

(14-A)

~~(14)~~

Sec. 22

(13)

P.O.T.

169+27.01 Meas.

set R.R. spike

2' ± Lt. of Pavement

29" Maple



32.90'

34.95'

19.93'



25" Maple

