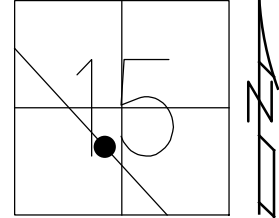


O.D.O.T. DISTRICT 2 SURVEY OFFICE (USE ONLY)

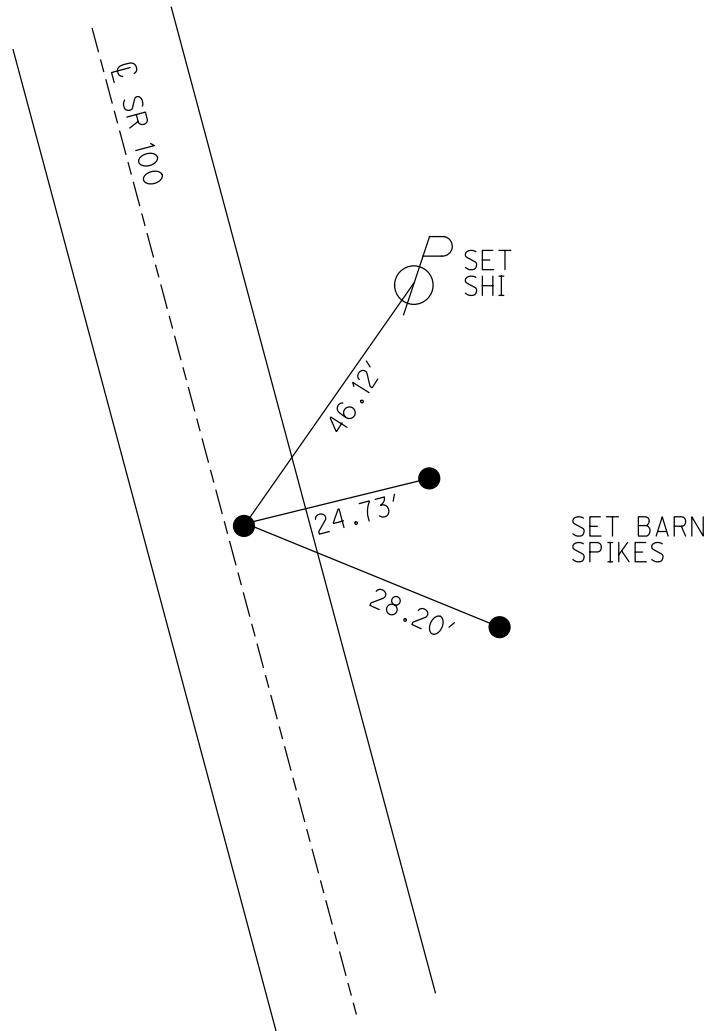
PERSONNEL _____ REFERENCE NO. 14 A SHEET 18 OF 46
 NOTES RHOADES DATE 6/15/22 ROUTE SR 100
 H.C. AUBLE WEATHER SUNNY COUNTY SENECA
 R.C. WHITAKER TEMP. 82° TOWNSHIP EDEN
 DWG BY WHITAKER PID 95778 SECTION 15
 T 1 N R 15 E

TYPE MONUMENT MAG/WASHER
 ON SURFACE - ~~BELOW~~ ON
 OFFSET ☉ PAVEMENT 2.2' ~~LT~~ : RT
8.4' TO RT EDGE PAVEMENT
 STATION: 193+04



HORIZ.DATUM: NAD83(2011) GEOID: 2012A
 GRID: NORTHING: 501175.053 EASTING: 1796349.004

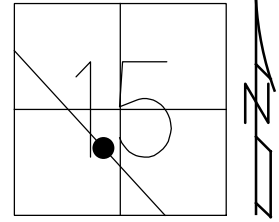
RECORD: P.O.T.
 STA.193+58.94
 FD P.K./WASHER
 ATOP BOAT SPIKE
 ATOP R.R. SPIKE
 SET P.K./WASHER
 10-18-00, MRC
 FD P.K./WASHER
 REFA14
 1-24-19
 8-19-19, JFO
 SET MAG/WASHER
 NEWREFA14
 6/15/22, DSA



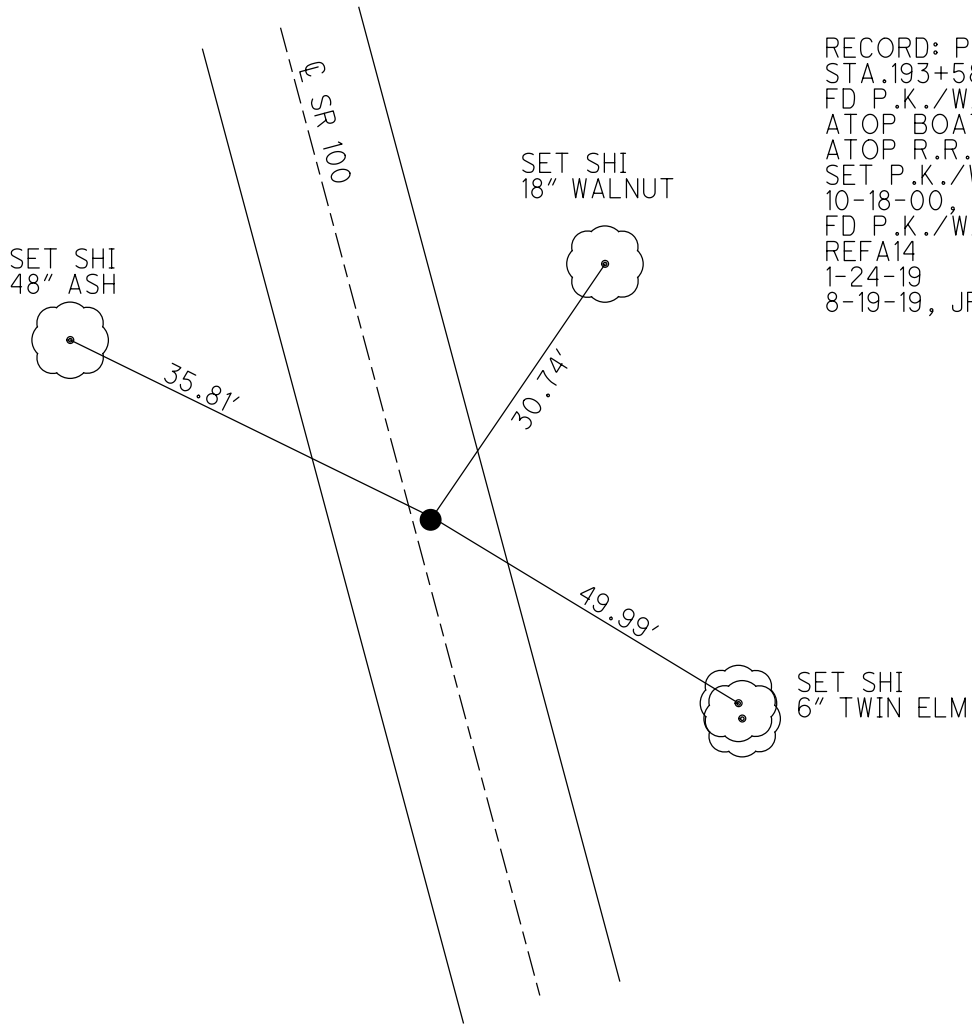
O.D.O.T. DISTRICT 2 SURVEY OFFICE (USE ONLY)

PERSONNEL	REFERENCE NO. <u>14 A</u>	SHEET <u>18</u> OF <u>38</u>
NOTES <u>CANTERBURY</u>	DATE <u>7-25-00</u>	ROUTE <u>SR 100</u>
H.C. <u>BARNHISEL</u>	WEATHER <u>SUNNY</u>	COUNTY <u>SENECA</u>
R.C. <u>MOSER</u>	TEMP. <u>82°</u>	TOWNSHIP <u>EDEN</u>
		SECTION <u>15</u>
DWG BY <u>NIESE</u>	PID <u>107060</u>	T <u>1</u> N R <u>15</u> E

TYPE MONUMENT P.K./WASHER
 ON SURFACE - ~~BELOW~~ ON
 OFFSET \varnothing PAVEMENT 2.2' ~~LT~~ : RT
8.4' TO RT EDGE PAVEMENT
 STATION: 193+04



HORIZ.DATUM: NAD83(2011) GEOID: 2012A
 GRID: NORTHING: 501175.053 EASTING: 1796349.004



RECORD: P.O.T.
 STA.193+58.94 MEAS.
 FD P.K./WASHER
 ATOP BOAT SPIKE
 ATOP R.R. SPIKE
 SET P.K./WASHER
 10-18-00, MRC
 FD P.K./WASHER
 REFA14
 1-24-19
 8-19-19, JFO

O.D.O.T. DISTRICT 2 SURVEY OFFICE

PERSONNEL

REFERENCE NO. 14

SHEET 16 OF 31

NOTES CANTERBURY

H.C. BARNHISEL

R.C. MOSEY

DATE 7-25-00

WEATHER SUN

TEMP. + 82°

ROUTE #100

COUNTY SENECA

TOWNSHIP EDEN

SECTION 15

T.L.N.R. 15 E

TYPE MONUMENT P.R. + WASHER

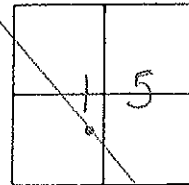
ON SURFACE - ~~BELOW~~ SURFACE

LEFT - ~~Q~~ PAV'T. - RIGHT 2.2' RT. Q

8.4' TO RT. EDGE PAVEMENT

S.L.M. 193 + 04

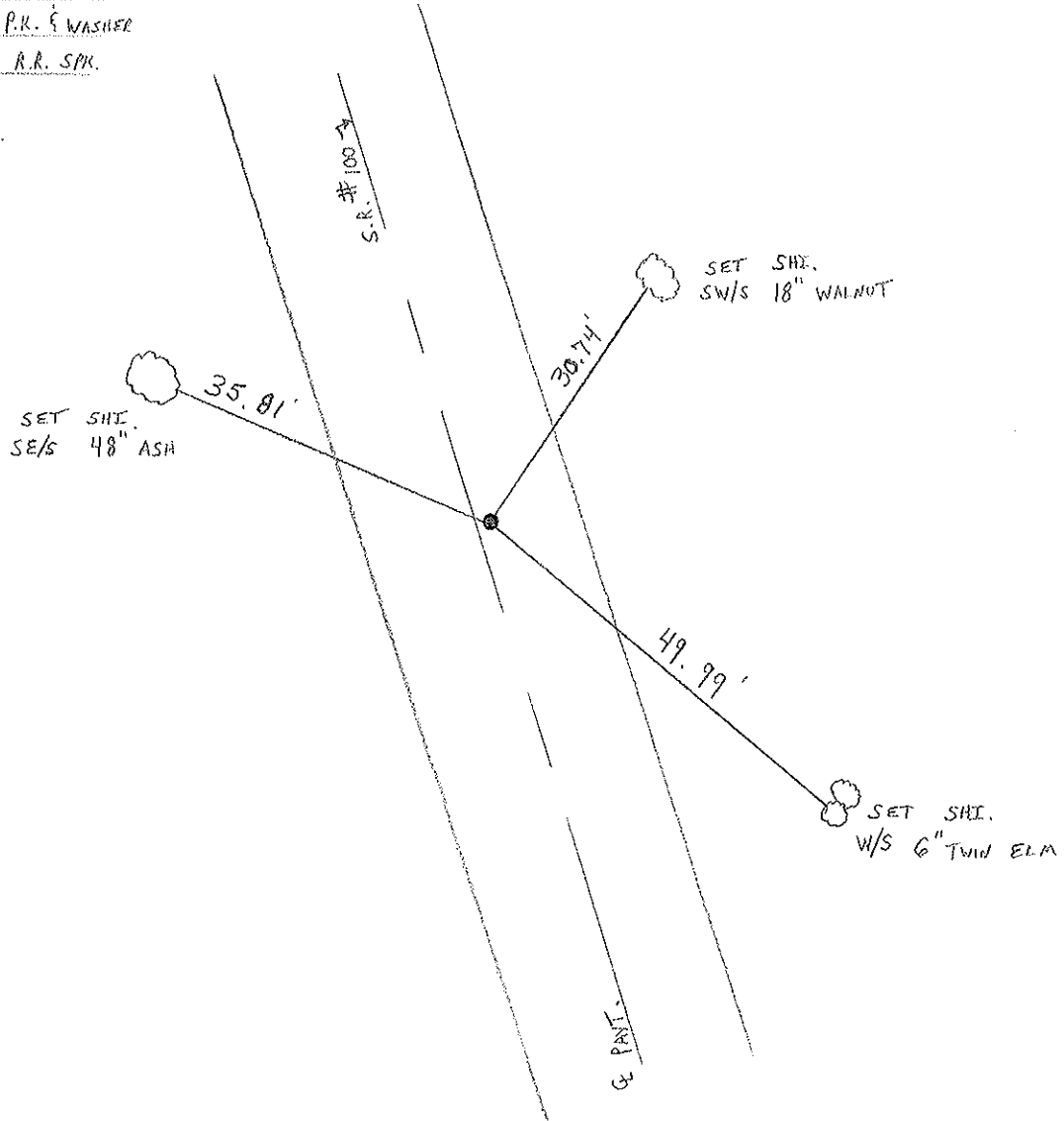
RESET P.R. + WASHER
 10-18-00
 M.R.C.



RECORD: P.O.T

193 + 58.94 MEAS. P.R. & WASHER

ATOP BOLT SPIKE ATOP R.R. SPK.



O.D.O.T. DISTRICT 2 SURVEY OFFICE

PERSONNEL

NOTES CROWIN
 H.C. RIPPLE
 R.C. BARBOUR MEAS.
GEYMAN

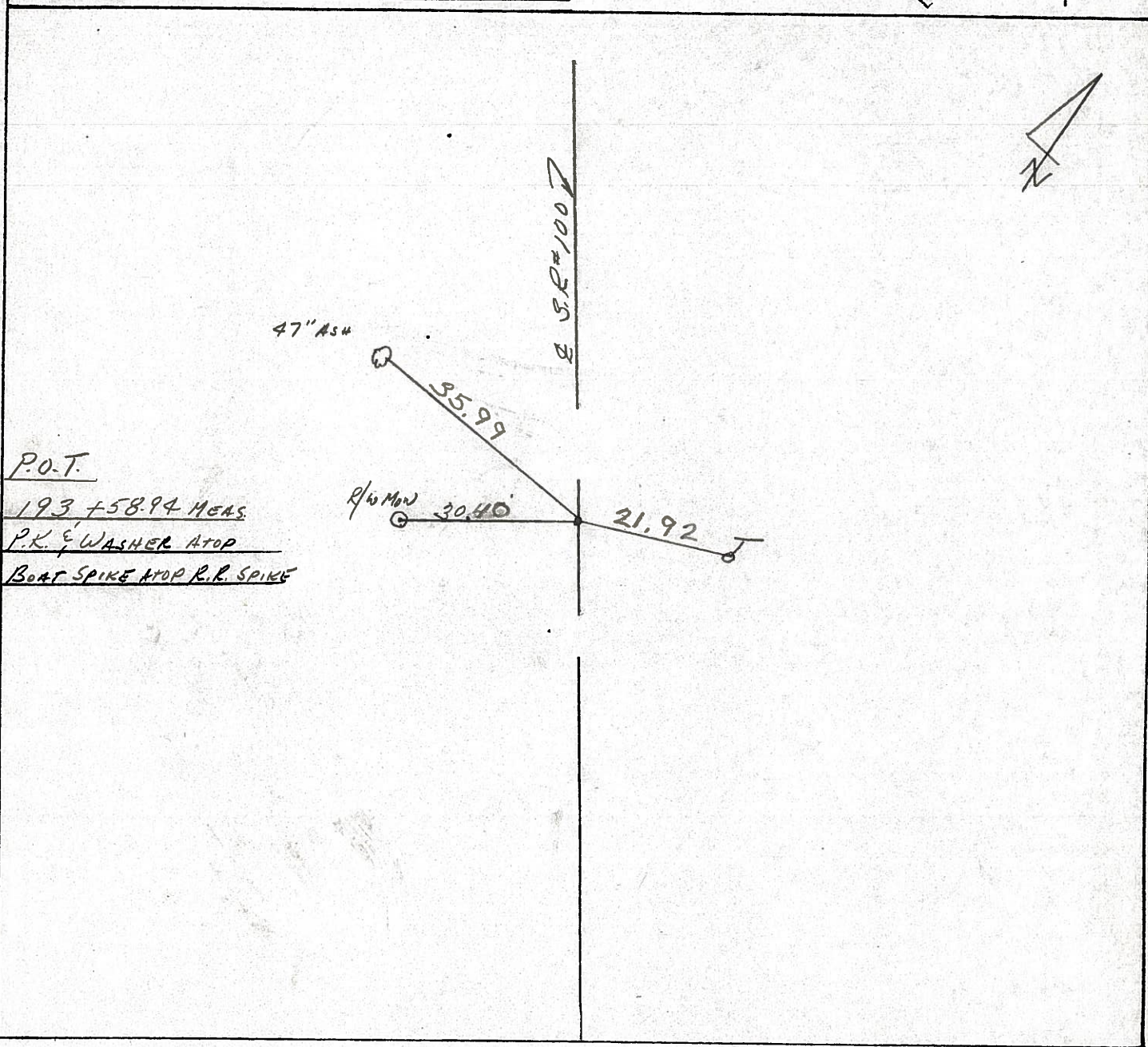
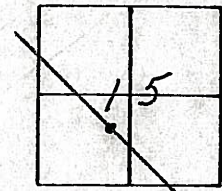
REFERENCE NO. 14
 DRAWN 12/20/88
 DATE 11-30-89
 WEATHER Cloudy Windy
 TEMP. 35°

SHEET 15 OF

ROUTE #100
 COUNTY SENECA
 TOWNSHIP EDEN
 SECTION 15
 T 1 N R 15 E

TYPE MONUMENT P.K. & Washer
 ON SURFACE - BELOW SURFACE
 LEFT - & PAV'T. - RIGHT 2 1/2 RT. &
 TO EDGE PAVEMENT
 S.L.M. STA. 193+58.94

14-A



P.O.T.
193+58.94 MEAS.
P.K. & WASHER ATOP
BOAT SPIKE ATOP R.R. SPIKE

PERSONNEL	TITLE	PERSONNEL	TITLE	COUNTY	Seneca	DATE	7/27/82
Cronin		Barbour		S. R.	#100	WEATHER	Sunny
Ripple				SEC	Bridge - Sen. 100 - 03.90	TEMP.	90°
Geyman							
Mosser							

DESCRIPTION Ties for Control Points JOB NO. _____

LEFT CENTER LINE SURVEY RIGHT

Eden Twp. Sec 15

#15

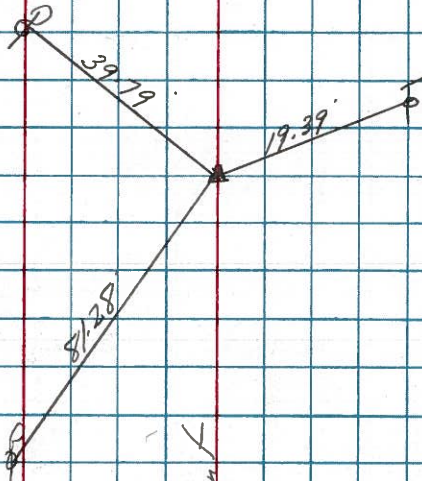
$A = 11^{\circ} 51' 40''$ Lt

P.I.

2.15 + 55.85 Meas.

Fd. P.K. Nail & washer on surface

C't Rt. of Pavement



14-A

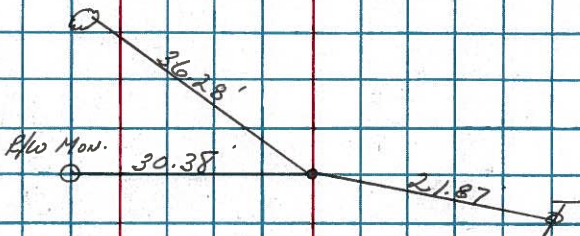
~~#14~~

P.O.T

193 + 58.94 Meas.

Fd. P.K. with head of F

2.5' Lt. of P.V.T.



S. R. #100

PERSONNEL TITLE PERSONNEL TITLE

CRONIN SCHNEIDER

RIFFLE MOSSER

BARBOUR

COUNTY SENECA

DATE 3/20/78

S. R. # 100

WEATHER sunny-windy

SEC. MELMORE-NORTH

TEMP. 45°

DESCRIPTION TIES FOR CONTROL POINTS

JOB NO.

LEFT

CENTER LINE

RIGHT

Eden Township

Sec. 15

47" Ash



36.31'

R/W Mon.



30.40'

21.86'

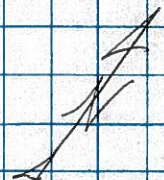
P.O.T.

193+58.94 Meas.

set R.R. spike (Punched)

2 1/2" ± R.F. of Pavement

14-A



Sec. 22

29" Maple



32.90'

25" Maple



34.95'

17.93'

P.O.T.

169+27.01 Meas.

set R.R. spike

2" ± L.F. of Pavement

13